

**Supplementary Table. Comparison between high and low inflammatory groups defined according to PLR and NLR**

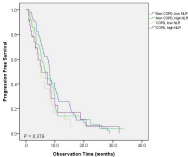
	<b>Low PLR</b> <b>(n=150)</b> <b>(n,%)</b>	<b>High PLR</b> <b>(n=117)</b> <b>(n,%)</b>	<i>p-value</i>	<b>Low NLR</b> <b>(n=156)</b> <b>(n,%)</b>	<b>High NLR</b> <b>(n=121)</b> <b>(n,%)</b>	<i>p-value</i>	<b>Low CRP</b> <b>(n=80)</b> <b>(n,%)</b>	<b>High CRP</b> <b>(n=80)</b> <b>(n,%)</b>	<i>p-value</i>
<b>Sex</b>									
<b>Female</b>	73 (48.7)	48 (41.0)	0.213	79 (50.6)	45 (37.2)	0.026	36 (45.0)	27 (33.8)	0.145
<b>Age (year)</b>	64.1±11.2	65.2±11.0	0.410	64.2±11.3	65.7±11.1	0.285	65.8±12.3	65.3±11.3	0.783
<b>Median survival time (95%CI)</b>	29.3 [20.0-38.6]	11.8 [8.1-15.5]	<0.001	26.0 [18.8-33.2]	10.6 [5.8-15.4]	0.001	28.3 [15.0-41.6]	10.6 [8.0-13.2]	<0.001
<b>Stage</b>			0.720			0.902			-
<b>IIIb</b>	12 (8.0)	8 (6.8)		11 (7.1)	9 (7.4)		80 (100)	80 (100)	
<b>IV</b>	138 (92.0)	109 (93.2)		145 (92.9)	112 (92.6)		0 (0)	0 (0)	
<b>BMI (kg/m<sup>2</sup>)</b>	23.8±3.5	22.8±3.3	0.024	24.0±3.5	22.5±3.3	0.001	23.2±3.3	22.9±3.3	0.653
<b>EGFR mutation</b>	(n=147) 50 (34.0)	(n=110) 41 (37.3)	0.589	(n=151) 58 (38.4)	(n=33) 34 (29.3)	0.121	(n=76) 35 (46.1)	(n=75) 24 (32.0)	0.077
<b>Ever smoker</b>	68 (45.3)	54 (46.6)	0.843	70 (44.9)	57 (47.5)	0.664	35 (44.3)	43 (53.8)	0.234
<b>ECOG</b>			0.725			0.053			0.108
<b>0-1</b>	127 (84.7)	100 (86.2)		139 (89.1)	97 (80.8)		72 (91.1)	66 (82.5)	
<b>2-3</b>	23 (15.3)	16 (13.8)		17 (10.9)	23 (19.2)		7 (8.9)	14 (17.5)	

<b>Pathology</b>			0.739			0.184			0.010
<b>Non-squamous</b>	134 (89.3)	103 (88.0)		142 (91.0)	104 (86.0)		75 (93.8)	64 (80.0)	
<b>Squamous</b>	16 (10.7)	14 (12.0)		14 (9.0)	17 (14.0)		5 (6.3)	16 (20.0)	
<b>FEV1 (liter)</b>	2.1±1.7	1.8±0.7	0.062	2.1±1.7	1.8±0.8	0.060	2.1±2.3	1.7±0.7	0.114
<b>FEV1 (% predicted)</b>	80.8±21.8	77.2±22.4	0.196	81.4±21.1	75.5±23.6	0.031	78.1±20.5	65.8±17.9	<0.001
<b>FVC (liter)</b>	2.7±1.0	2.7±2.8	0.993	2.6±1.0	2.7±2.7	0.736	2.5±0.7	2.6±3.3	0.649
<b>FVC (% predicted)</b>	80.7±20.4	74.4±22.8	0.020	80.9±20.8	73.5±22.5	0.005	75.9±19.4	63.7±17.5	<0.001
<b>FEV1/FVC(% predicted)</b>	73.5±11.0	75.1±10.2	0.215	73.9±10.6	74.0±11.7	0.962	74.6±11.1	74.5±12.4	0.963
<b>NLR</b>	2.6±1.3	5.6±3.4	<0.001	2.2±0.7	6.5±4.1	0.001	3.5±2.7	5.3±4.0	0.001
<b>PLR</b>	130±32	266±72	<0.001	143±50	250±86	<0.001	192.5±96.0	216.8±77.7	0.091
<b>CRP</b>	3.56±0.68	3.66±0.52	0.915	2.37±0.52	5.11±0.63	0.001	0.51±0.48	6.97±6.03	<0.001

**Abbreviations:** COPD; chronic obstructive pulmonary disease, CRP; c-reactive protein, BMI; body mass index, EGFR; epidermal growth factor receptor, ECOG; Eastern Cooperative Oncology Group, FEV1; forced expiratory volume in 1 s, FVC; forced vital capacity, DLCO; diffusing capacity of the lung for carbon monoxide, HR; hazard ratio, CI; confidence interval, NLR; neutrophil-lymphocyte ratio, PLR; platelet-lymphocyte ratio

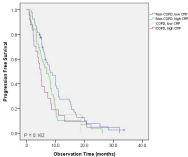


# B



Non-COPD, NLR low	54	44	34	24	14
Non-COPD, NLR high	51	41	31	21	11
COPD, NLR low	25	15	5	0	0
COPD, NLR high	25	15	5	0	0
		Number at risk			

# C



Non-COPD, CRPlow	54	44	34	24	14
Non-COPD, CRPhigh	48	30	28	20	8
COPD, CRPlow	28	20	8	8	8
COPD, CRPhigh	28	20	8	8	8

Number at risk

## **Supplementary figure legends**

**Supp. Fig. 1A Comparison of progression free survival between the 4 COPD-PLR subgroups**

**Supp. Fig. 1B Comparison of progression free survival between the 4 COPD-NLR subgroups**

**Supp. Fig. 1C Comparison of progression free survival between the 4 COPD-CRP subgroups**