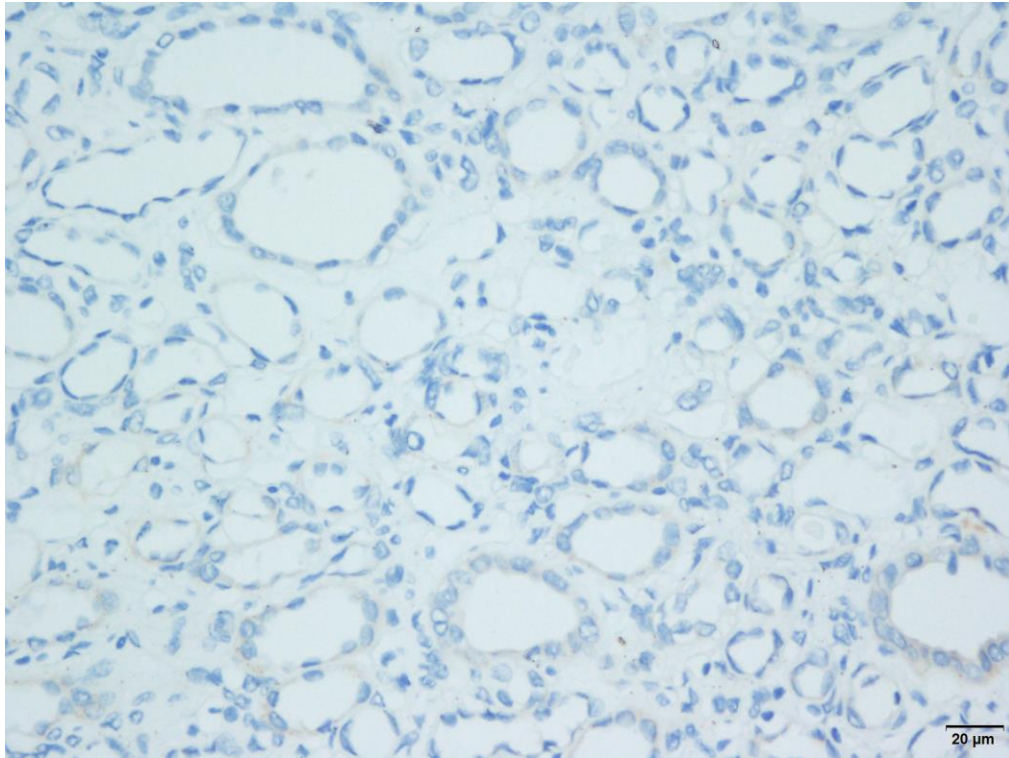


**Supplementary Table 1** Patient characteristics (N=367)

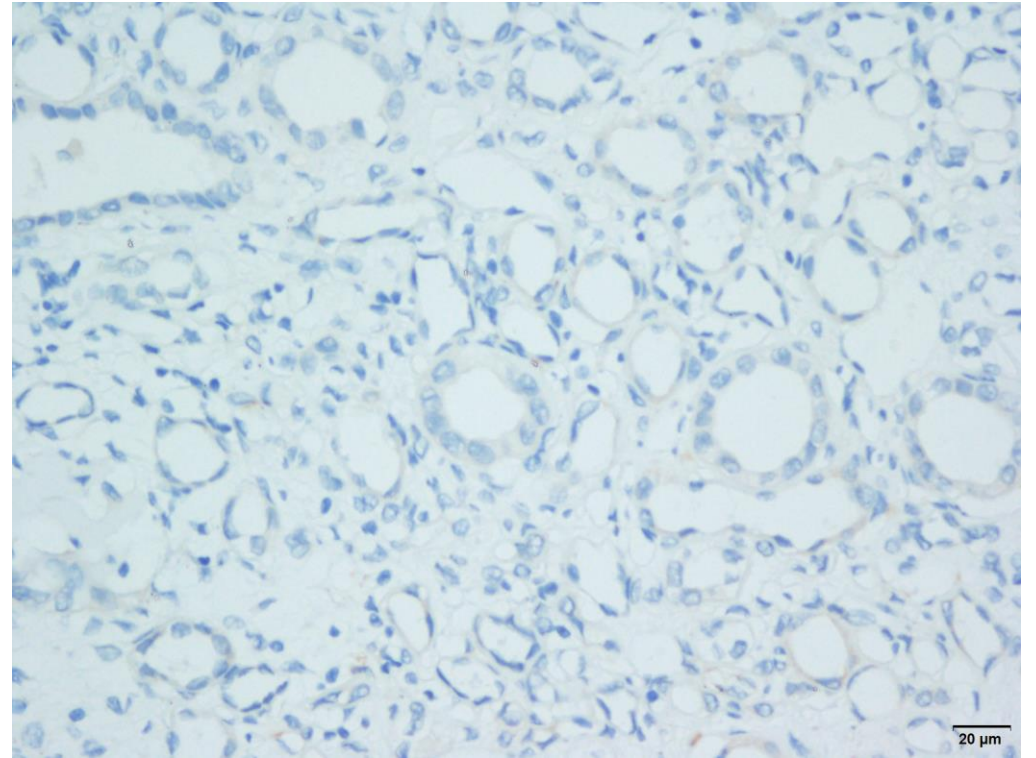
Characteristics	Sub-characteristics	Value (%)
Age (years)		55 (range, 21-86)
Gender	Male	248 (67.6)
	Female	119 (32.4)
Invasion deep (T)	T1	92 (25.1)
	T2	211 (57.5)
	T3	45 (12.3)
	T4	19 (5.2)
Lymph node metastasis (N)	N0	322 (87.7)
	N1	45 (12.3)
Distant metastasis (M)	M0	308 (83.9)
	M1	59 (16.1)
pTNM stage	I	114 (31.1)
	II	174 (47.4)
	III	18 (4.9)
	IV	61 (16.6)
ISUP grade	1	32 (8.7)
	2	143 (39.0)
	3	115 (31.3)
	4	77 (21.0)
Total		367

ISUP: International Society of Urological Patheology

**a**



**b**



**Supplementary Figure 1: CD39 protein expression in in para-carcinoma normal tissues (400×magnification).**



## International Science Editing

[www.internationalscienceediting.com](http://www.internationalscienceediting.com)

Compuscript Ltd  
T/A International Science Editing  
Bay K, Shannon Industrial Park West  
Shannon, Co Clare  
Ireland  
Tel. +353 61 472818 Fax +353 61 472688

**DATE:** August 21, 2020

To whom it may concern,

The paper "High expression of CD39 is associated with poor prognosis and immune infiltrates in clear cell renal cell carcinoma" by Jie Wu was edited by International Science Editing. We were asked not to check the references. Please contact us if you would like to view the edited paper.

Kindest regards,

David Cushley.