

Supplementary materials

Overexpression of GIHCG is associated with a poor prognosis and immune infiltration
in hepatocellular carcinoma

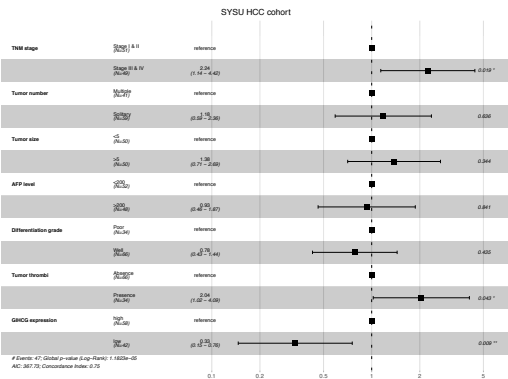
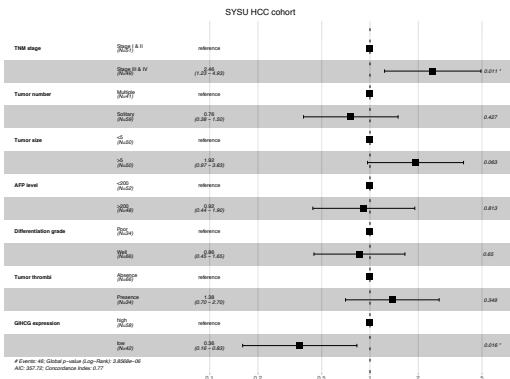
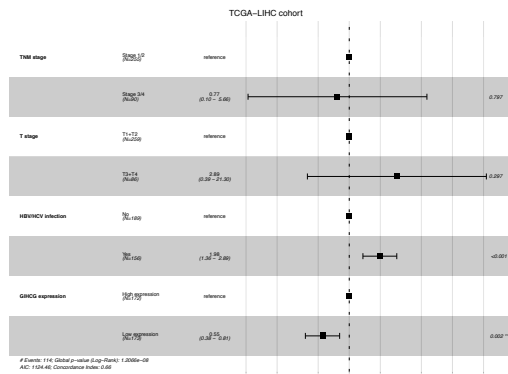
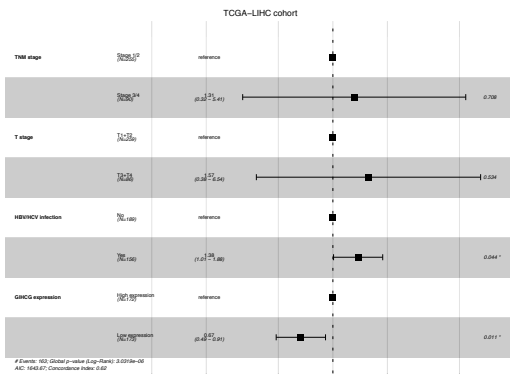
Supplementary Figure 1. Multivariate Cox regression analyses of GIHCG expression and other clinical risk factors associated with survival. Visualization of the multivariate Cox regression analyses for overall survival (A) and disease-free survival (B) in the SYSU HCC cohort and for overall survival (C) and disease-free survival (D) in the TCGA-LIHC cohort.

Supplementary Figure 2 Kaplan-Meier plots of GIHCG expression in different subgroups.
overall survival curves for different subgroups in the SYSU HCC cohort

Supplementary Figure 3 Kaplan-Meier plots of GIHCG expression in different subgroups.
disease-free survival curves for different subgroups in the SYSU HCC cohort

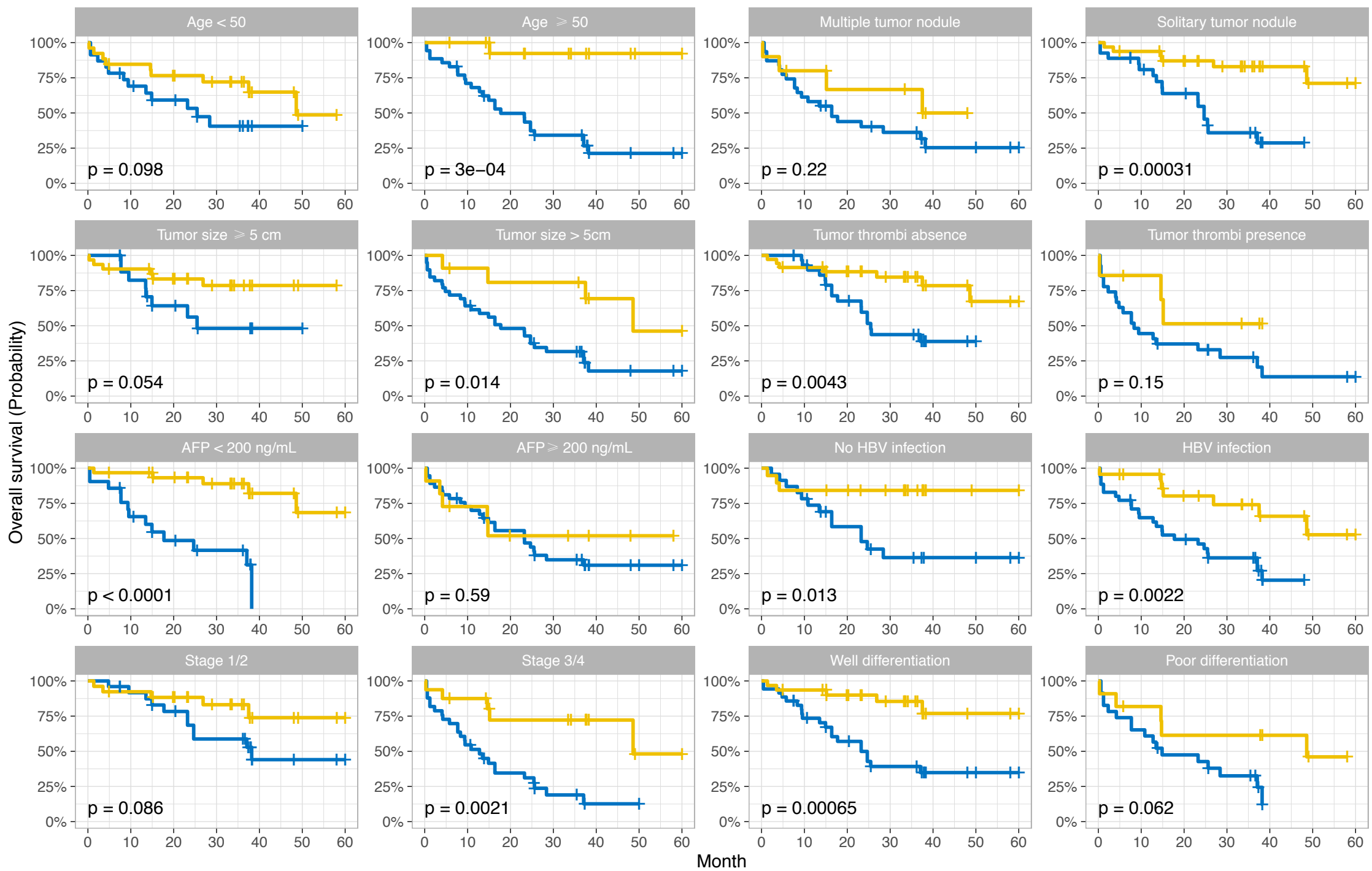
Supplementary Figure 4 Kaplan-Meier plots of GIHCG expression in different subgroups.
overall survival curves for different subgroups in the TCGA-LIHC cohort.

Supplementary Figure 5. Kaplan-Meier plots of GIHCG expression in different subgroups.
disease-free survival curves for different subgroups in the TCGA-LIHC cohort.

A**B****C****D**

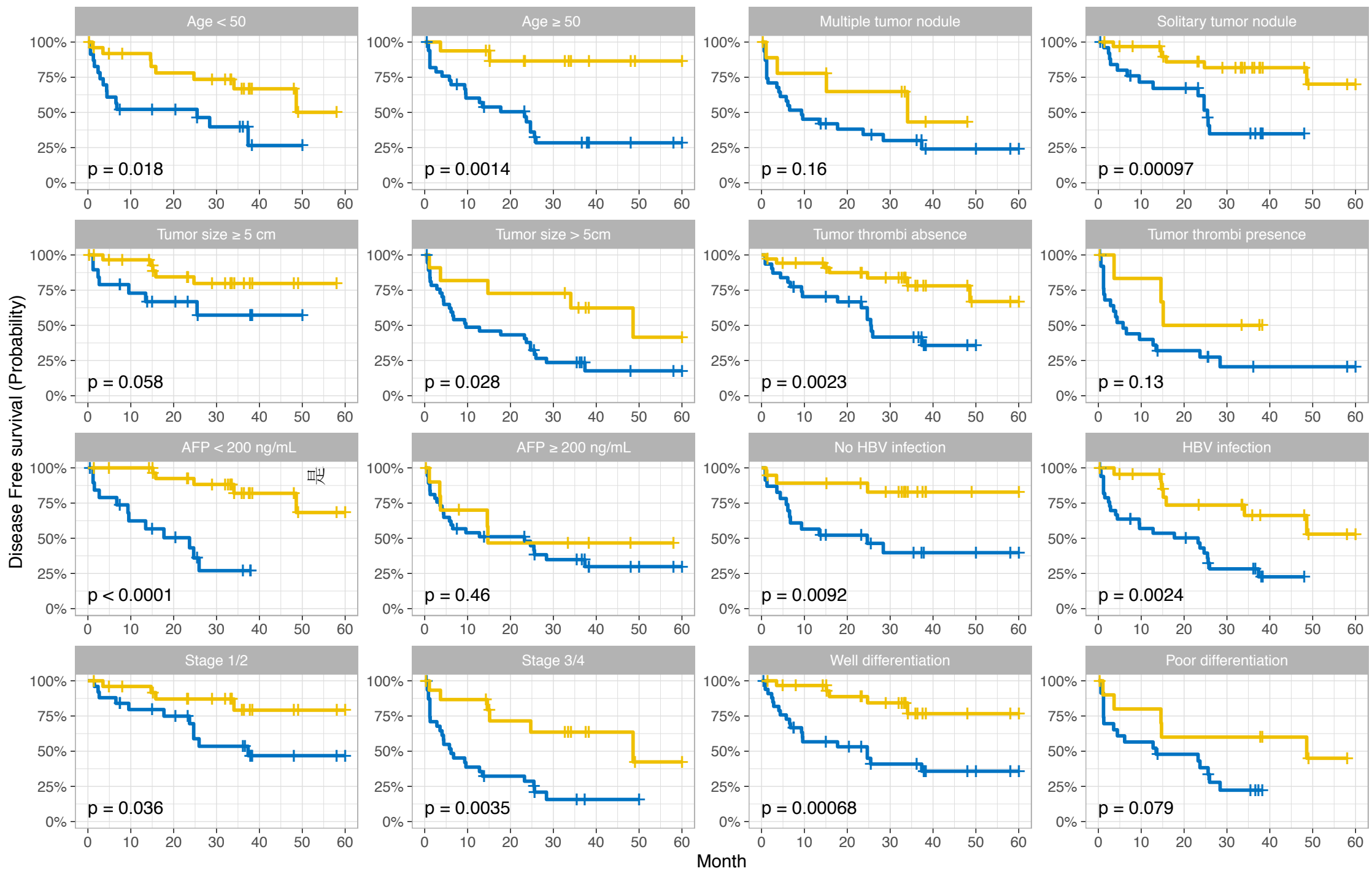
SYSU HCC cohort

Strata + High expression + Low expression



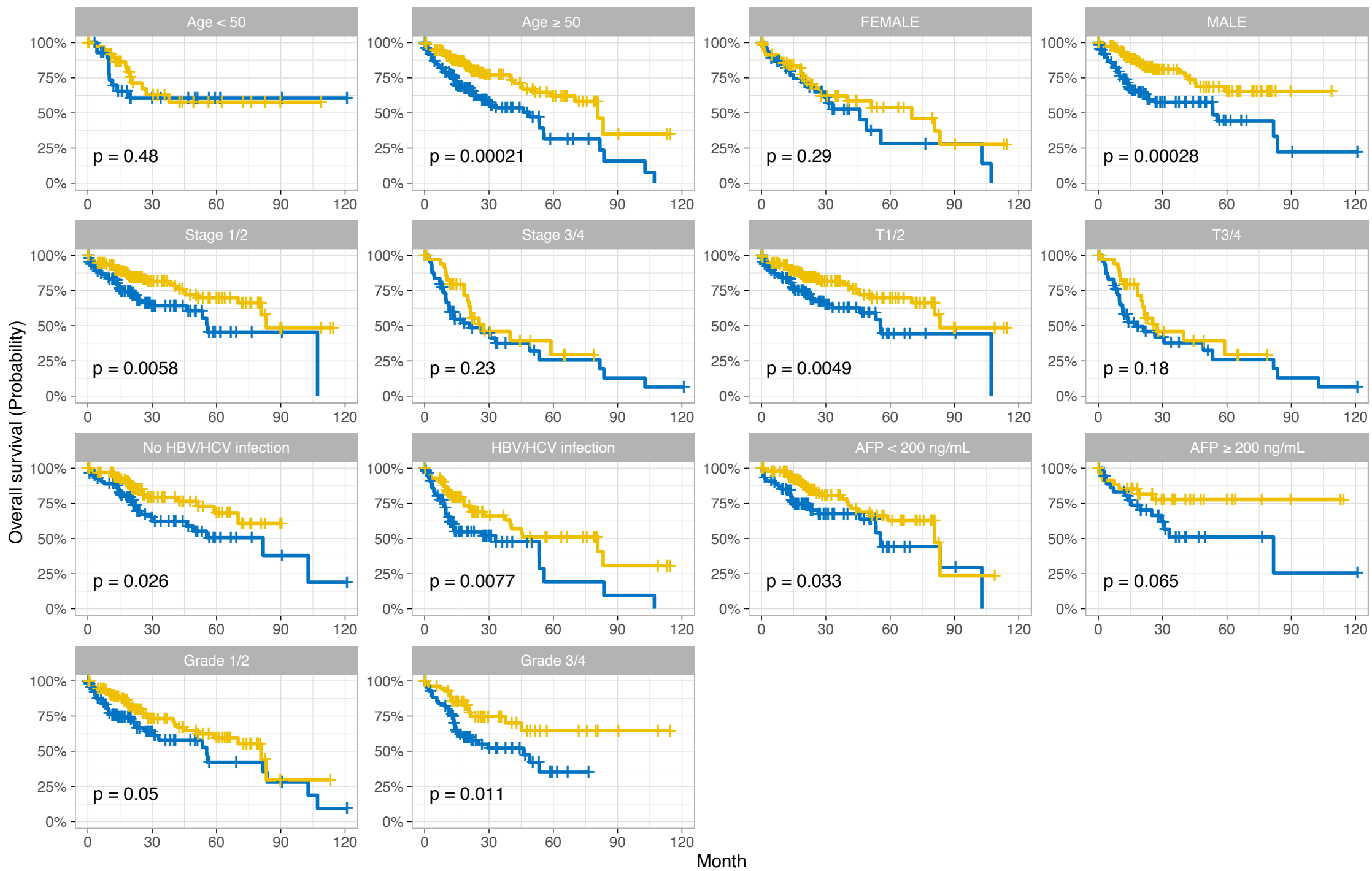
SYSU HCC cohort

Strata + High expression + Low expression



TCGA-LIHC cohort

Strata + High expression + Low expression



TCGA-LIHC cohort

Strata + High expression + Low expression

