

Supplementary materials

Supplement 1. Table S1. The demographic and clinical characteristics of the enrolled patients and healthy subjects

Parameters	Healthy control (n=40)	CHC (n=20)	EBV (n=10)	CMV (n=10)	HSV (n=10)	CHB (n=20)	P value
AGE	39.9±14.60	42.2±5.80	41.8±13.49	42.8±10.38	47.8±11.24	43.9±14.32	0.511
Male (%)	24(60%)	11(55%)	7(70%)	4(40%)	6(60%)	11(55%)	0.102
HCV(log10)	-	6.13±1.15	-	-	-	-	
EBV(log10)	-	-	3.61±1.53	-	-	-	
CMV(log10)	-	-	-	2.94±0.62	-	-	
HSV(log10)	-	-	-	-	3.03±0.70	-	
HBV(log10)	-	-	-	-	-	6.03±1.53	
HBV-miR-3(log10)	-	-	-	-	-	5.24±1.58	<0.001

— negative

Supplement 2. Figure S1

Fig. A Negative correlation between PTEN protein expression and HBV-miR-3 levels in HepG2 cells.

Fig. B Negative correlation between PTEN protein expression and HBV-miR-3 levels in HepAD38 cells.

Fig.C Statistical chart of apoptosis in HepG2 cells.

Fig.D Statistical chart of apoptosis in HeAD38 cells.

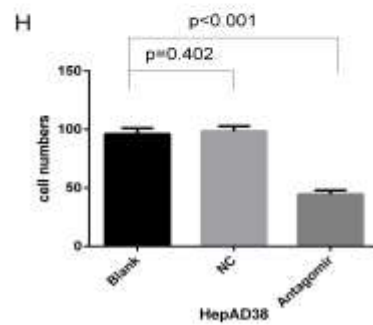
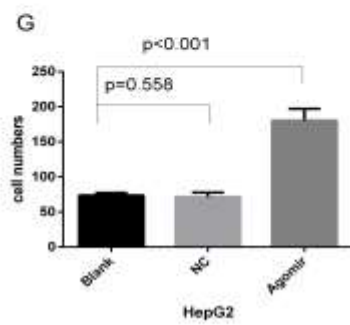
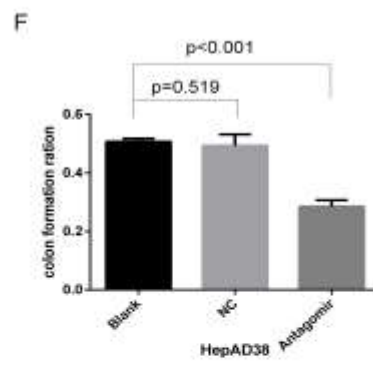
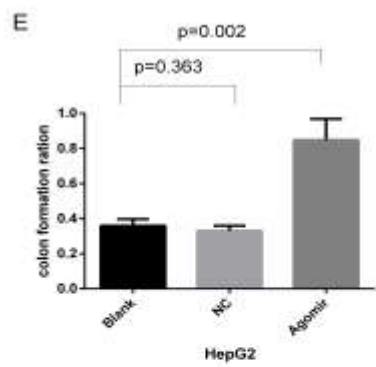
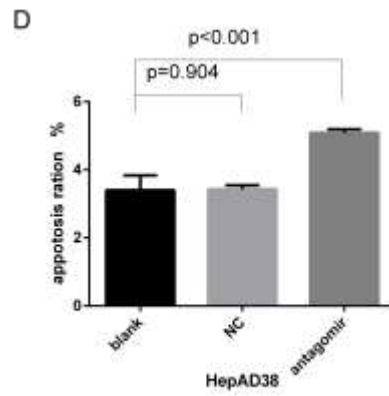
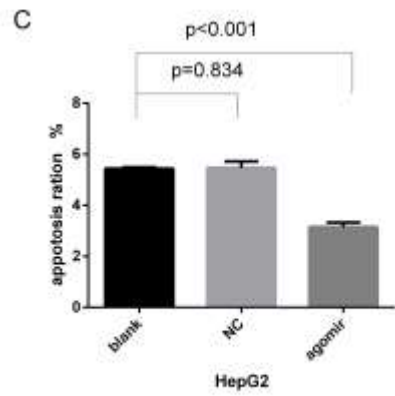
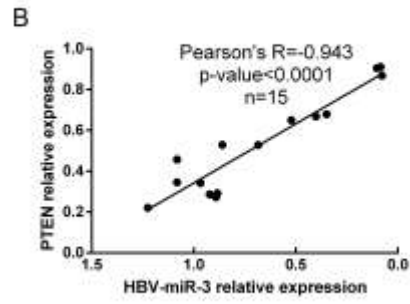
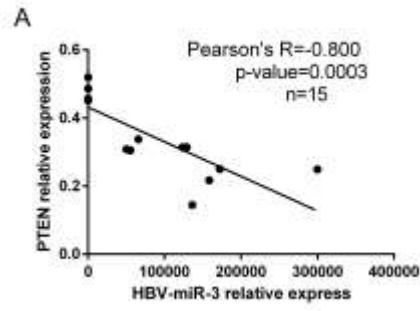
Fig.E Statistical chart of colony formation in HepG2 cells.

Fig.F Statistical chart of colony formation in HepAD38 cells.

Fig.G Statistical chart of cell migration in HepG2 cells.

Fig.H Statistical chart of cell migration in HepAD38 cells.

Supplement 2



Supplement 3

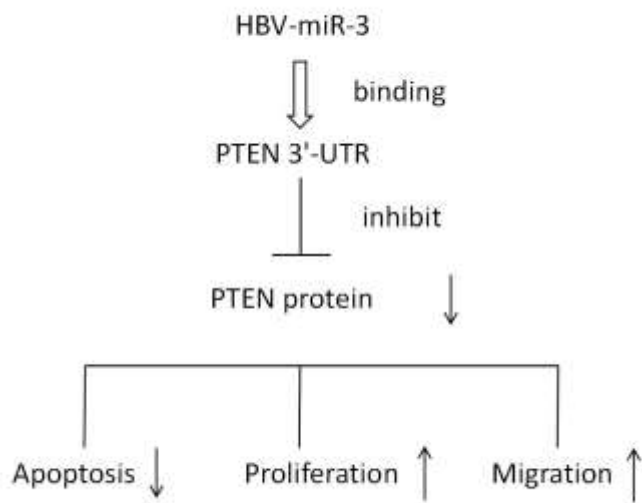


Figure S2: Model of HBV-miR-3 regulation of proliferation, migration and apoptosis in hepatocellular carcinoma cells by targeting PTEN. ↑:up-regulation ↓:down-regulation