

Figure S1

A

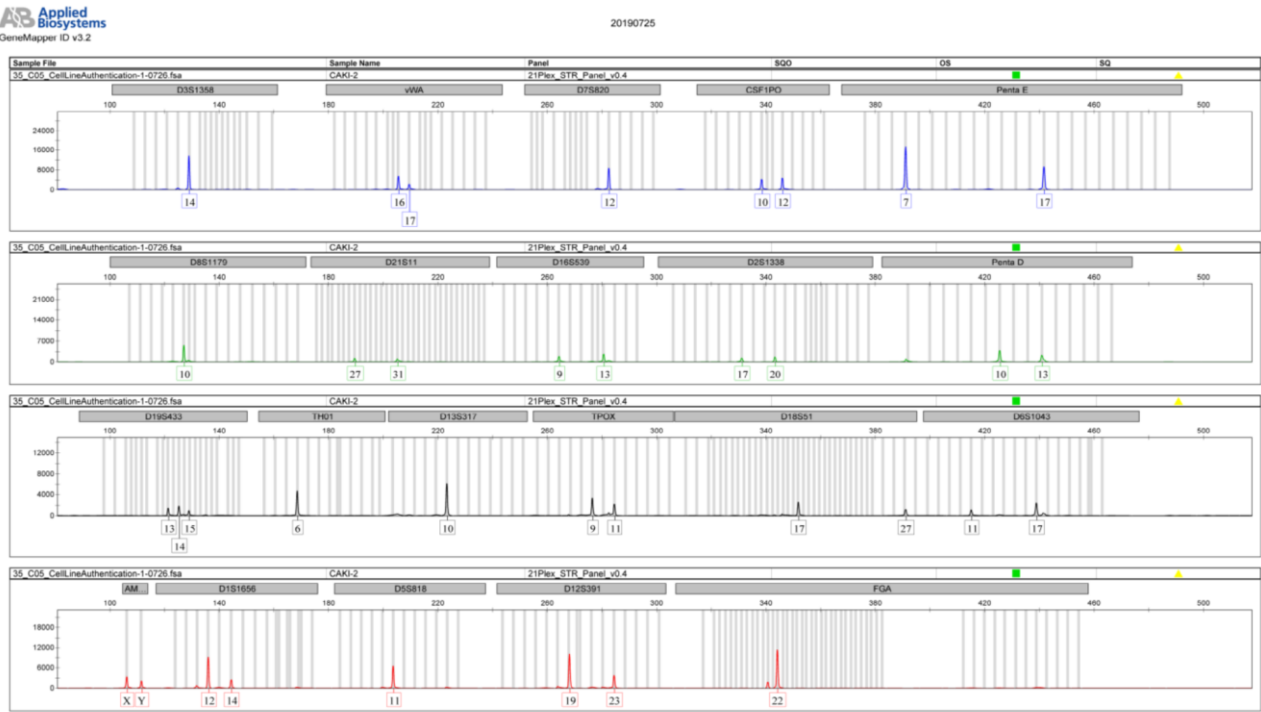
Result of STR matching analysis by your data.

- DSMZ Profile Database -

A graphical presentation is shown at the bottom of this page.

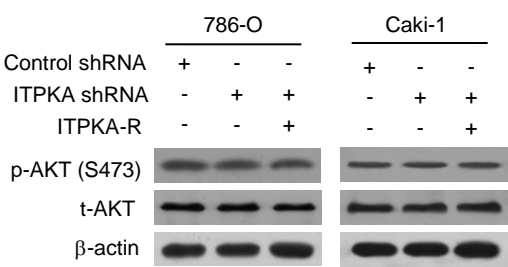
EV	Cell No.	Cell name	Locus names									Figures
			D5S818	D13S317	D7S820	D16S539	VWA	TH01	AM	TPOX	CSF1PO	
		Query (Your Cell)	11,11	10,10	12,12	9,13	16,17	6,6	X,Y	9,11	10,12	
1.00(36/36)	54	CAKI-2	11,11	10,10	12,12	9,13	16,17	6,6	X,Y	9,11	10,12	-
1.00(36/36)	HTB-47	Caki-2	11,11	10,10	12,12	9,13	16,17	6,6	X,Y	9,11	10,12	-
0.78(28/36)	762	HAIR-M	11,13	9,10	12,12	9,11	16,17	6,6	X,Y	9,11	10,13	-
0.61(22/36)	768	U-2904	11,11	12,12	12,12	11,13	16,17	6,9.3	X,X	8,11	12,14	-
0.61(22/36)	CRL-5889	NCI-H1703 [H1703]	11,11	10,10	10,12	10,12	16,17	7,7	X,Y	8,11	12,12	-
0.61(22/36)	CRL-5976	NCI-H64 [H64]	11,11	10,10	10,12	9,12	17,18	6,6	X,X	8,8	10,10	-
0.61(22/36)	CRL-7780	TO 203.T	11,11	12,14	8,9	9,13	16,17	8,9.3	X,Y	9,11	11,12	-
0.61(22/36)	JCRB0324	BCNS1KO	11,11	8,9	10,12	9,11	14,17	6,6	X,Y	8,11	11,12	-
0.61(22/36)	JCRB1158	Yub633	11,11	8,9	10,12	9,12	14,17	6,6	X,X	8,11	10,12	-
0.61(22/36)	JCRB1217	MT-3	11,11	10,11	10.3,12	9,11	14,17	9,9	X,Y	8,9	10,12	-
0.61(22/36)	JCRB3009	BCNS1KO hTERT	11,11	8,9	10,12	9,11	14,17	6,6	X,Y	8,11	11,12	-
0.61(22/36)	RCB0597	SF8656	10,13	10,10	12,12	11,13	17,18	6,6	X,X	8,11	10,10	-
0.61(22/36)	RCB1184	Lu-165	9,13	10,10	12,12	9,11	16,16	9,9	X,Y	8,9	10,12	-

B



Supplementary figure 1. Authentication of Caki-2 cell line we used by STR profile.
(A) Searching for the matching results of locus for Caki-2 cell line we used in the DSMZ profile database (in red frame).
(B) Sequencing for locus of Caki-2 cell line we used and presentation of each characteristic locus.

Figure S2



Supplementary figure 2. ITPKA has little effect on mTORC2 signaling pathway in RCC. 786-O and Caki-1 cells were stably transfected with Control shRNA or ITPKA shRNA or ITPKA shRNA plus ITPKA-R. Western-blot assay was performed to detect the protein expression changes of mTORC1 signaling pathway related-molecules, including t-AKT, p-AKT (S473) between indicated groups. The protein expression levels of β-actin were detected as the internal control.