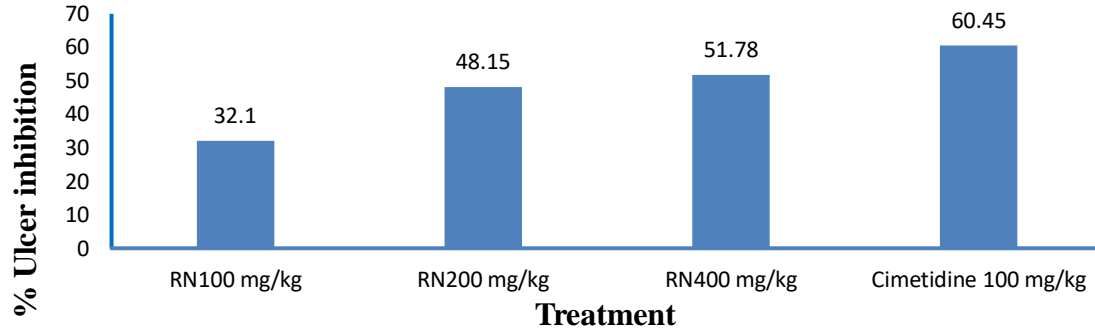
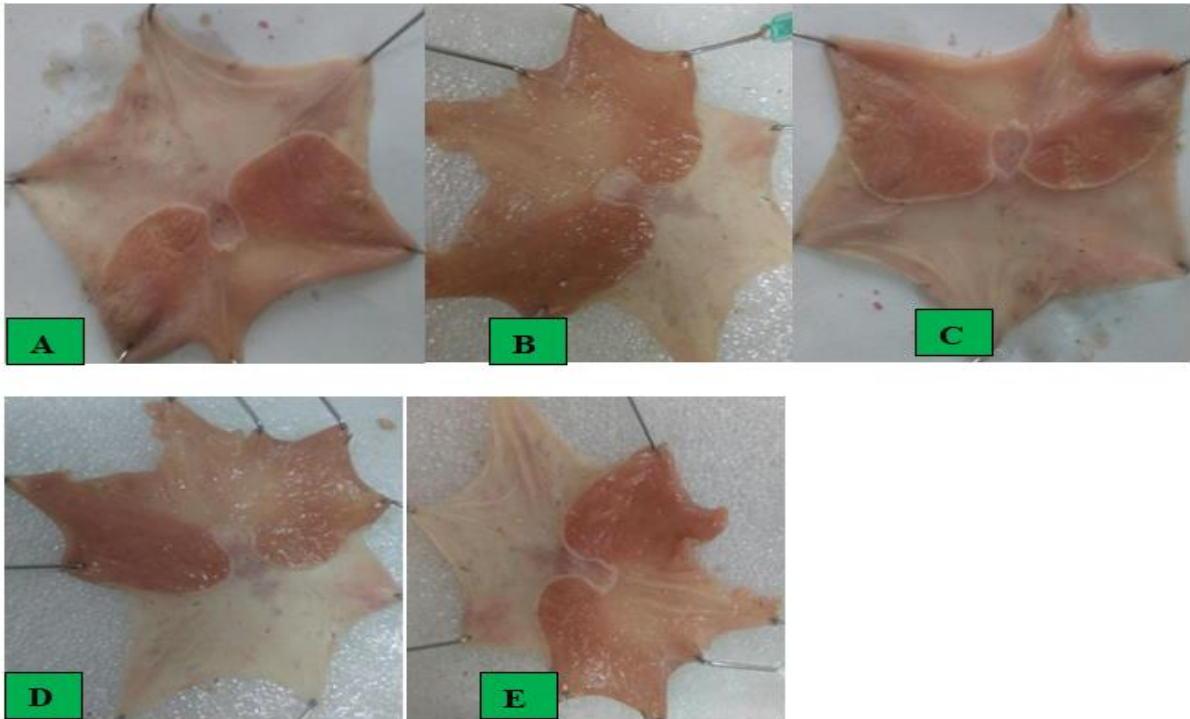


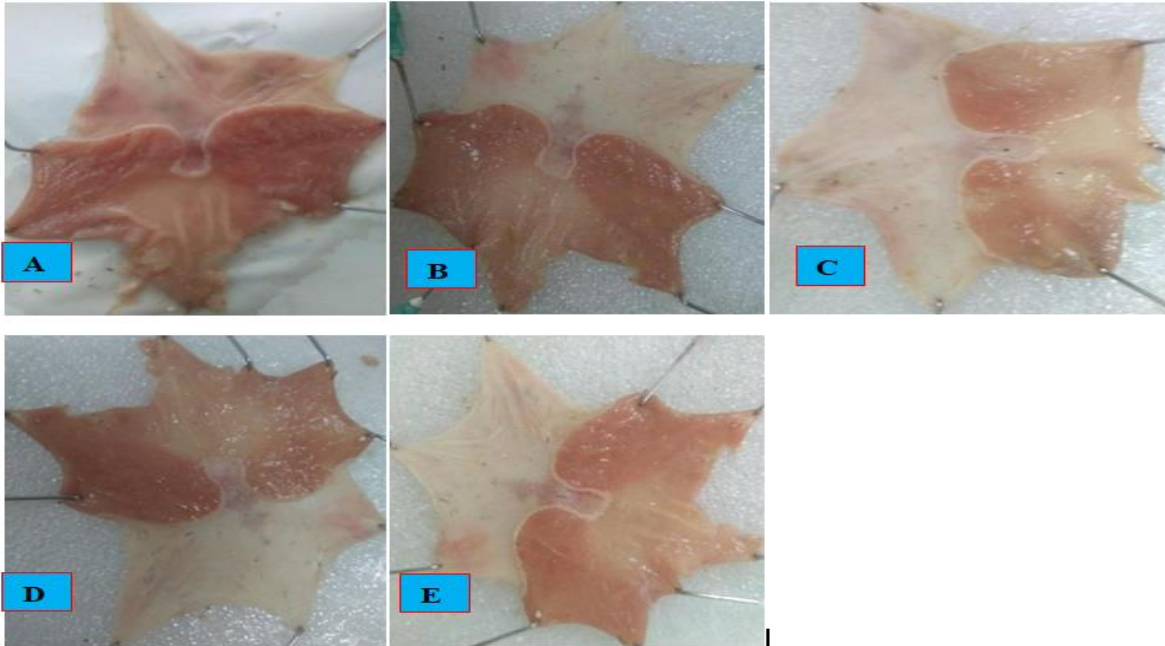
## Supplementary materials



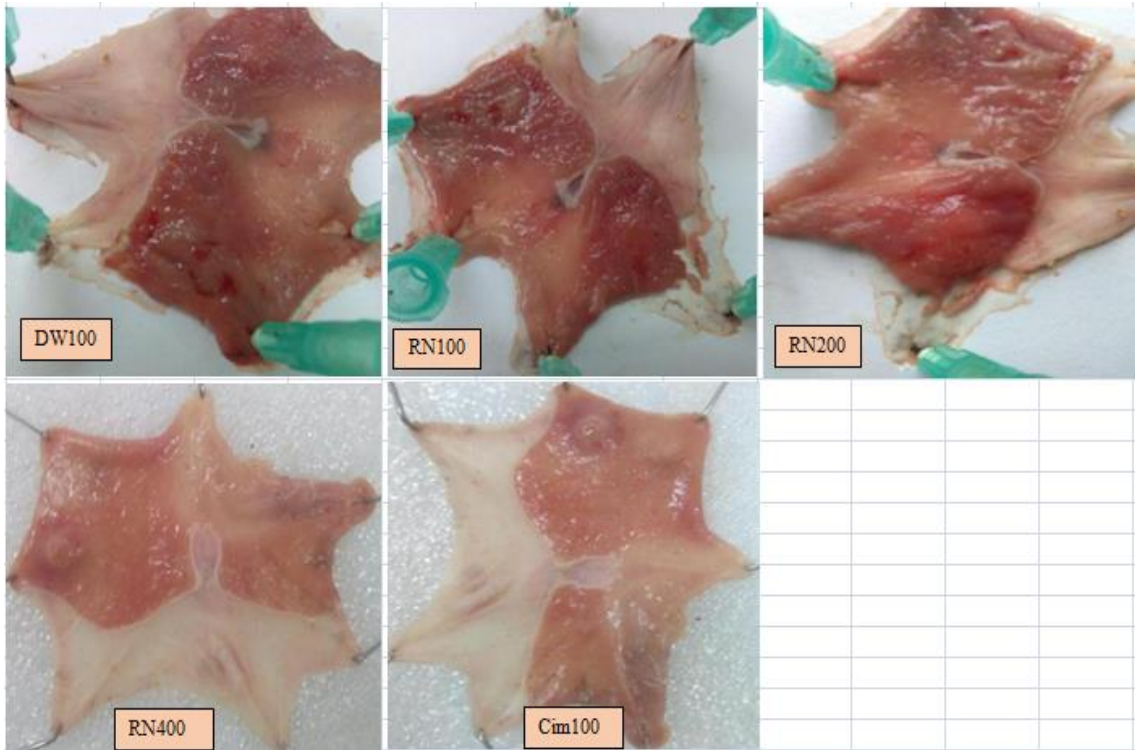
**Figure 1:** Percentage ulcer inhibition effect of *R. nepalensis* root crude extract on hypothermic restraint stress induced ulcer model [RN= *Rumex nepalensis* hydromethanolic crude extract]



**Figure 2:** Pyloric ligation induced gastric ulcer. A: Negative control (treated with solvent 10ml/kg), B: Treated with *R. nepalensis* at 100mg/kg crud extract, C: Treated with *R. nepalensis* at 200mg/kg crud extract, D: Treated with *R. Nepalensis* at 400mg/kg crud extract, E: Positive control treated with standard (Omeprazole 100mg/kg). All were treated for 10 days.



**Figure 3:** Hypothermic restraint stress induced ulcer. A: Negative control (treated with solvent 10ml/kg), B: Treated with *R. nepalensis* at 100mg/kg crud extract, C: Treated with *R. nepalensis* at 200 mg/kg crud extract, D: Treated with *R. nepalensis* at 400 mg/kg crud extract, E: Positive control treated with standard (Cimetidine 100 mg/kg). All were treated with only single dose.



**Figure 4:** Acetic acid induced gastric ulcers. DW10: Negative control treated with solvent 10ml/kg, RN100: Treated with *R. nepalensis* at 100mg/kg crud extract, RN200: Treated with *R. nepalensis* at 200mg/kg crud extract, RN400: Treated with *R. nepalensis* at 400mg/kg crud extract, Cim100: Positive control treated with standard (Cimetidine 100mg/kg).