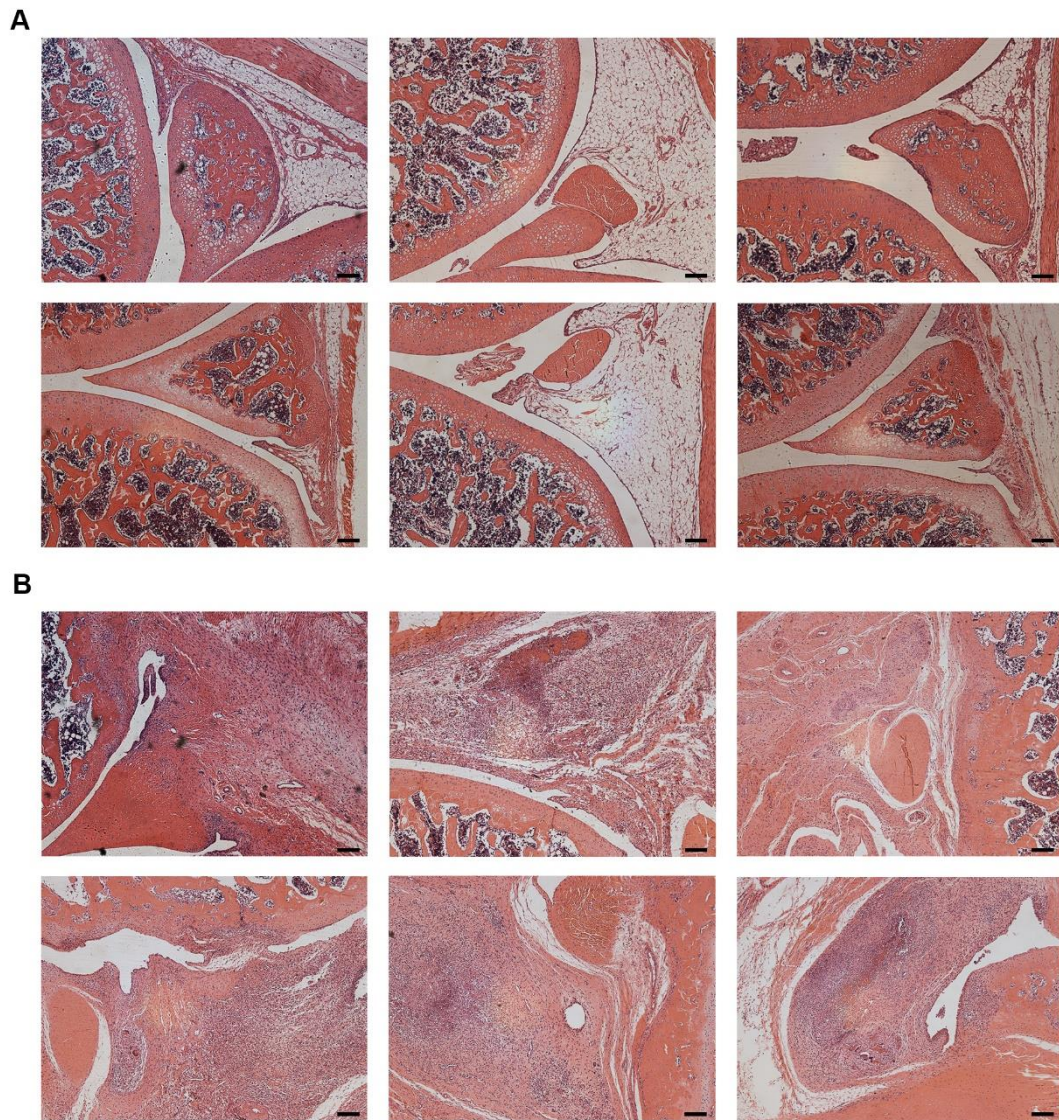


**Figure S1** Standard curves of IL-17A, PGE2, PGI2 and PGD2 measured by ELISA kits.

Standard curves of IL-17A, PGE2, PGI2 and PGD2 were Figure S1A, Figure S1B, Figure S1C, and Figure S1D, respectively.  $R^2$  represents the correlation coefficient.

**Abbreviations:** IL-17A, interleukin-17A; PGE2, prostaglandin E2; prostacyclin 2, PGI2; prostaglandin D2, PGD2.



**Figure S2** Images of knee joints in rats of the normal and model groups. **(A)** Images of knee joints in rats of normal group. Six photographs represent six different rats in the normal group and no evidence of inflammatory activity or joint erosion was observed in all rats of the normal group. Scale bar, 200µm. **(B)** Images of knee joints in rats of model group. Six photographs represent six different rats in the model group and outstanding synovial hyperplasia, pannus formation and joint erosion were observed in all rats of model group. Scale bar, 200µm.