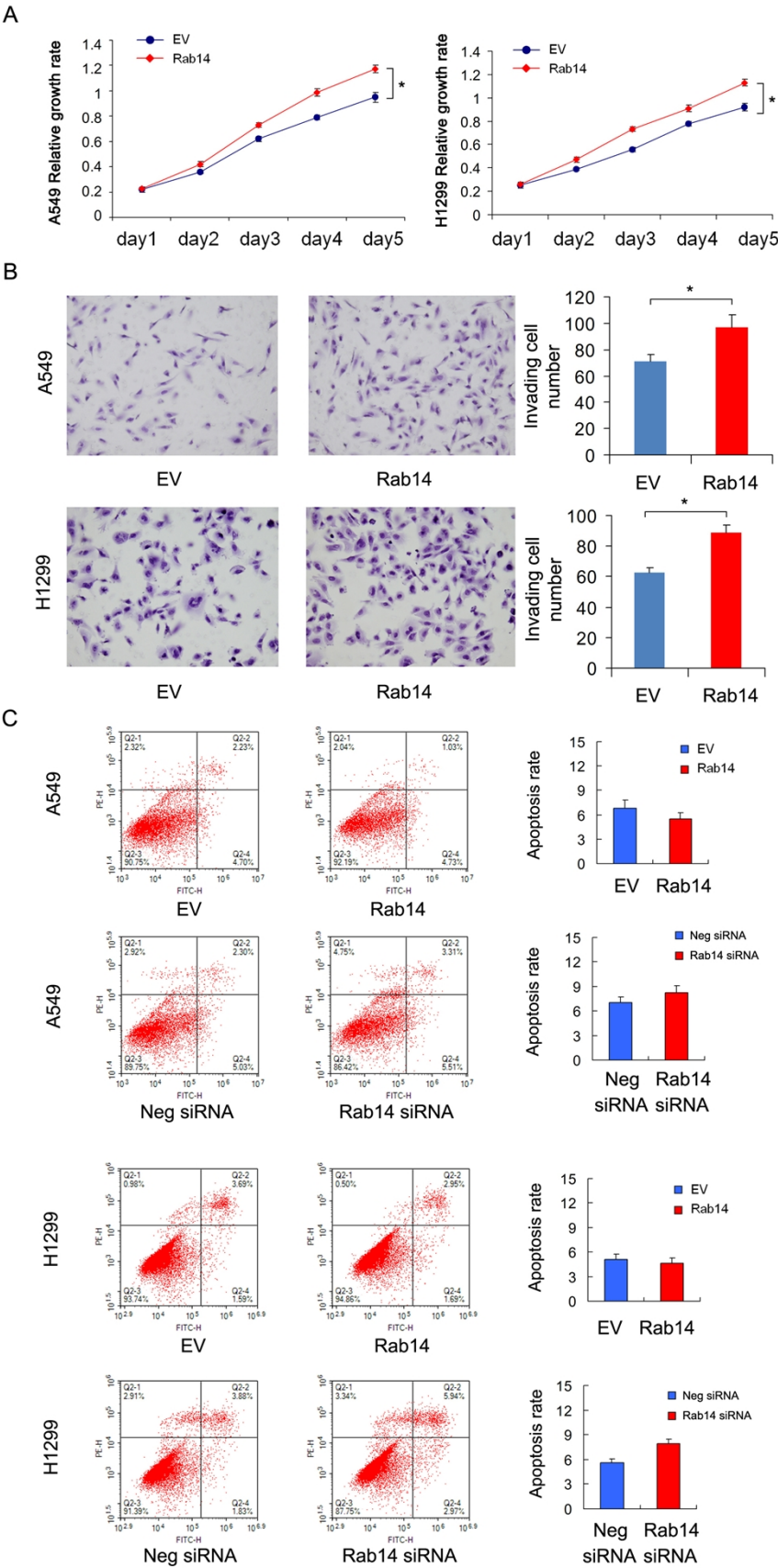


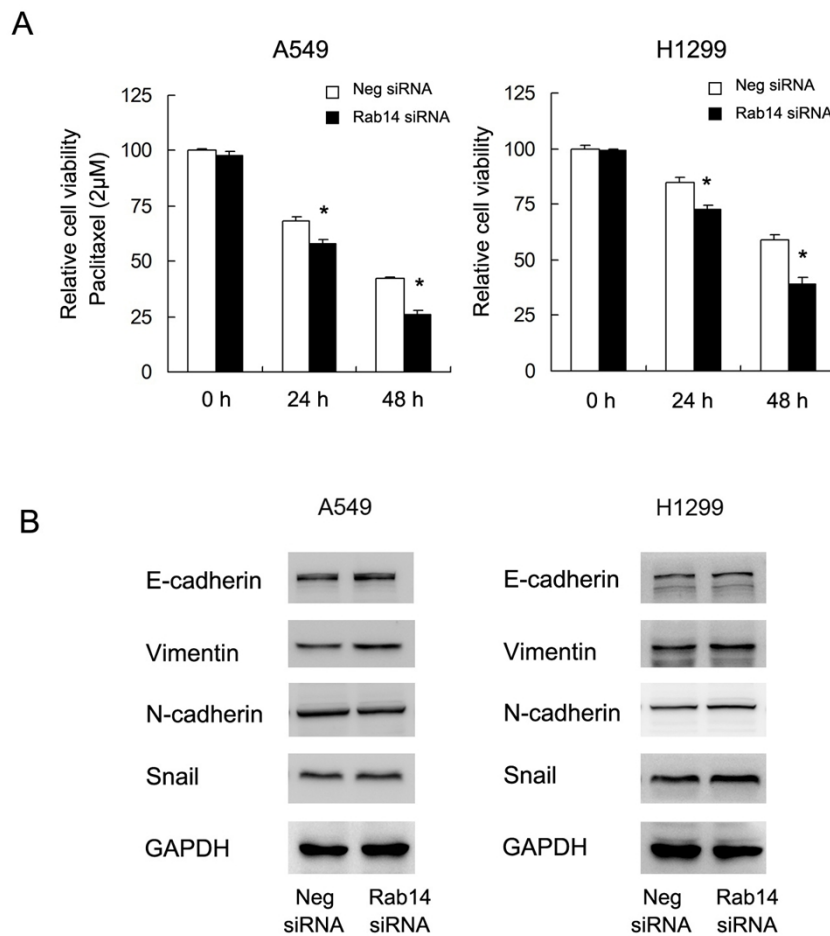
Supplementary Figure 1



Supplementary Figure 1

A. MTT results showed that Rab14 transfection increased proliferation rate in A549 and H1299 cells. B. Transwell assay showed that Rab14 overexpression increased the numbers of invading cells in A549 and H1299 cells. C, Rab14 overexpression did not change apoptosis. Rab14 depletion slightly increased apoptosis rate in A549 and H1299 cell line. * $p < 0.05$.

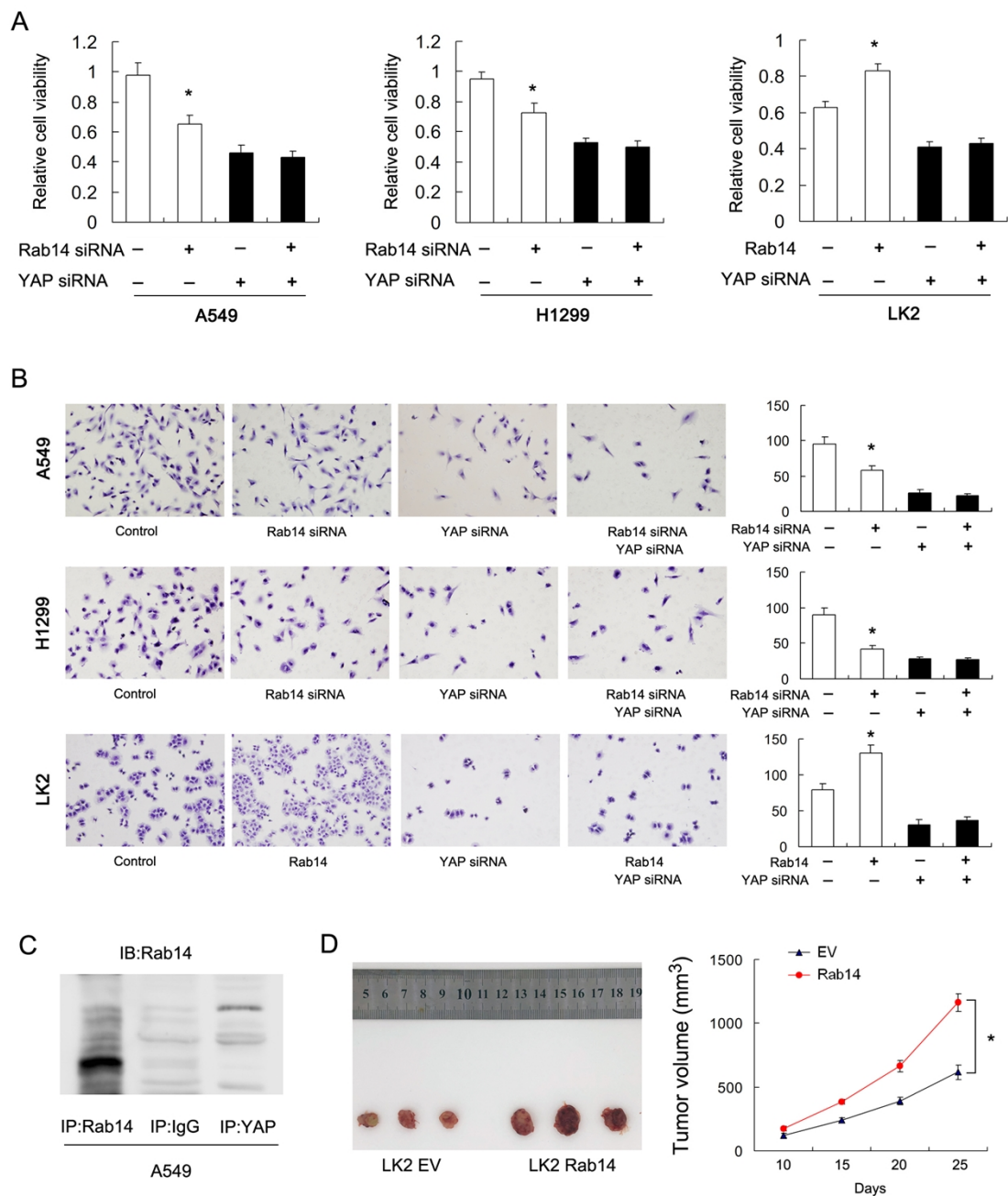
Supplementary Figure 2



Supplementary Figure 2

A. MTT showed that Rab14 depletion increased inhibition rate in both A549 and H1299 cells treated with 2µM concentration of paclitaxel. B. Rab14 depletion did not change the protein levels of E-cadherin, N-cadherin, Vimentin, and Snail in A549 and H1299 cell lines. * $p < 0.05$.

Supplementary Figure 3



Supplementary Figure 3

A. MTT showed that YAP siRNA reduced cell proliferation and abolished the promoting effect of Rab14 on NSCLC proliferation. B. Transwell assay showed that YAP siRNA reduced cell invasion and abolished the promoting effect of Rab14 on invading ability. C. Co-immunoprecipitation of YAP and Rab14 followed by western

blot showed that there is no obvious interaction between YAP and Rab14. D. LK2 cells were stably transfected with Rab14 plasmid. Cells were injected into nude mice. Tumor growth and volume of xenografts were significantly increased when injected with cells with Rab14 overexpression. * $p < 0.05$

Supplementary Table 1. Distribution of Rab14 status in adenocarcinoma according to clinicopathological characteristics.

Characteristics	Number of patients	Rab14 low expression	Rab14 high expression	<i>P</i>
Age				
<60	35	13	22	0.2468
≥60	27	14	13	
Gender				
Male	33	16	17	0.4030
Female	29	11	18	
Differentiation				
Well	30	17	13	0.0437
Moderate- Poor	32	10	22	
TNM stage				
I	24	14	10	0.0620
II III	38	10	25	
Tumor status				
T1	26	11	15	0.8670
T2-T4	36	16	20	
Nodal metastasis				
Negative	29	17	12	0.0248
Positive	33	11	23	

Supplementary Table 2. Distribution of Rab14 status in squamous cell carcinoma according to clinicopathological characteristics.

Characteristics	Number of patients	Rab14 low expression	Rab14 high expression	<i>P</i>
Age				
<60	33	16	17	0.3370
≥60	20	7	13	
Gender				
Male	42	20	22	0.2255
Female	11	3	8	
Differentiation				
Well	8	3	5	0.7150
Moderate- Poor	45	20	25	
TNM stage				
I	19	12	7	0.030
II III	34	11	23	
Tumor status				
T1	9	1	8	0.0320
T2-T4	44	22	22	
Nodal metastasis				
Negative	27	14	13	0.2056
Positive	26	9	17	