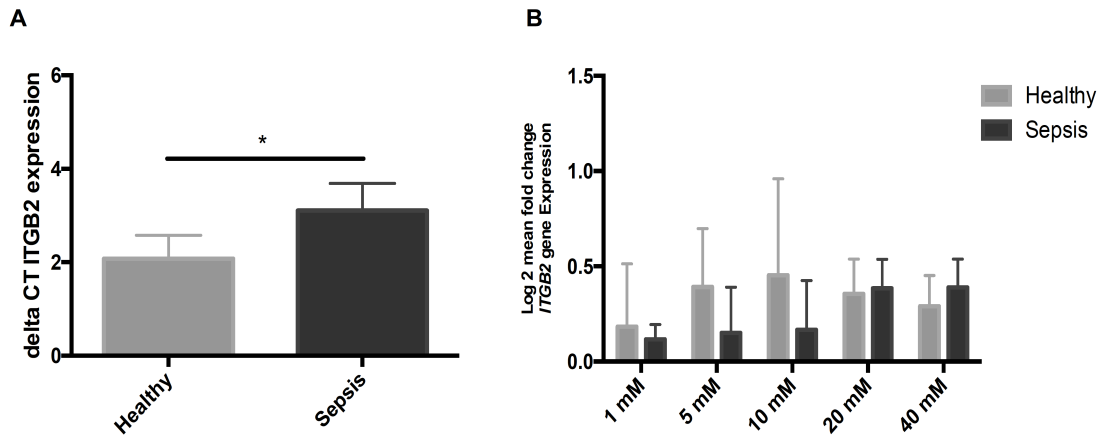


Supplementary Figure 1. Effect of phorbol myristate acetate (PMA; 600nM) on NET formation. NETs counted per 100 neutrophils (n=5 for both groups) (A), the levels of dsDNA (B) from patients with sepsis and healthy controls (n=5 for both groups) (**** p< 0.0001, *** p< 0.001).



Supplementary Figure 2. The *ITGB2* mRNA expression (A) of isolated neutrophils from patients with sepsis and healthy controls (n=5 for both groups), and (B) cells treated with different concentrations of ascorbate (1, 5, 10, 20 and 40 mM) for 2h (* p< 0.05).

Supplementary Table 1. Detailed information of patients with sepsis

Patient No.	1	2	3	4	5	6	7	8	9	10	11	12	13	14	15	16	17	18	19	20
Gender	M	F	F	F	F	F	F	M	F	M	M	M	M	M	M	F	F	M	M	M
Age	65	65	60	27	63	34	66	64	61	60	65	60	39	60	67	70	72	62	63	78
Source of infection	GI tract	GI tract	GI tract	RS	GI tract	GI tract	RS	RS	Skin	Skin	RS	GI tract	CNS	GU tract	RS	RS	RS	RS	Skin	GI Tract
BUN (mg/dL)	52	91	18	9	51	15	14	44	56	62	71	34	91	102	20	64	2.26	1.18	0.72	51
Cr (mg/dL)	3.52	5.01	0.71	0.72	2.03	1.96	1.69	2.15	1.54	1.28	2.12	2.95	3.7	3.08	1.82	3.49	21.5	66.5	109.81	3.54
TB (mg/dL)	0.43	0.6	0.87	NA	33.52	1.64	0.74	0.51	0.72	2.19	0.47	12.55	3.16	16.41	0.65	0.74	0.29	1.39	1.42	0.84
DB (mg/dL)	0.33	0.49	0.61	NA	23.68	0.82	0.41	0.38	0.32	1.71	0.19	8.2	2.51	11.18	0.29	0.53	51	71	47	0.55
SGOT (U/L)	31	50	46	NA	14	1417	2199	33	87	36	29	1590	155	103	55	29	41	32	52	49
SGPT (U/L)	34	56	70	NA	2	632	1047	29	87	27	33	816	139	8	14	13	74	168	36	26
ALP (U/L)	265	452	372	NA	147	72	95	90	68	94	123	443	157	384	244	72	140	141	135	117
Na (mmol/L)	137	141	146	134	138	148	133	131	141	143	145	134	143	132	133	142	4.3	3.5	3.1	146
K (mmol/L)	3.5	4.3	3.5	3.5	3.1	3.9	4	5	4	3.8	4.3	3.3	4.6	4.8	3.5	3.5	106	116	109	3.6
Cl (mmol/L)	108	107	111	106	96	95	87	95	101	112	110	98	113	96	102	102	25	11	18	106
CO ₂ (mmol/L)	17	17	15	21	18	17	23	24	20	19	21	22	19	13	17	21	235	78	7	19
Platelet (10 ³ /uL)	299	234	55	286	82	95	204	230	146	39	117	61	558	43	140	284	8.25	18.18	0.19	55
SOFA score	11	13	12	5	16	11	9	4	2	8	10	18	10	15	10	4	10	8	8	12

Abbreviations: GI; gastrointestinal, RS; respiratory system, CNS; central nervous system, GU; genitourinary, and SOFA; Sequential Sepsis-Related Organ Failure Assessment, SD; standard deviation, N/A; not applicable