

Supplementary Information

Comprehensive analysis of SiNPs on the genome-wide transcriptional changes in *Caenorhabditis elegans*

Shuang Liang^{1,2,*}, Junchao Duan^{1,2,*}, Hejing Hu^{1,2}, Jingyi Zhang^{1,2}, Shan Gao^{2,3},
Haiming Jing^{2,3}, Guojun Li^{2,3}, Zhiwei Sun^{1,2}

¹ *Department of Toxicology and Sanitary Chemistry, School of Public Health, Capital Medical University, Beijing 100069, P.R. China*

² *Beijing Key Laboratory of Environmental Toxicology, Capital Medical University, Beijing 100069, P.R. China*

³ *Beijing Key Laboratory of Diagnostic and Traceability Technologies for Food Poisoning, Beijing Center for Disease Prevention and Control/Beijing Center of Preventive Medicine Research, Beijing, 100013, P.R. China*

** These two authors contribute equally to this work.*

Corresponding authors:

Zhiwei Sun, School of Public Health, Capital Medical University, Beijing, 100069, P.R. China. E-mail: zwsun@ccmu.edu.cn

Guojun Li, Beijing Center for Disease Prevention and Control/Beijing Center of Preventive Medicine Research, Beijing, 100013, P.R. China. E-mail: ligj@bjcdc.org

Supplemental Materials

Characterization of SiNPs

The characterization of SiNPs has been reported in our previous studies [1]. SiNPs were dispersed in deionized water, and the size of 500 particles which selected randomly was measured using transmission electron microscopy (TEM) and Image J software. The zeta potential and hydrodynamic size of SiNPs were performed by dynamic light scattering (DLS) (Nano ZS90; Malvern Instruments, UK) in distilled water and K-medium. SiNPs appeared to be in spherical shape and well dispersed. The size distribution was measured using Image J software and the average diameter of SiNPs was 58 ± 7 nm and a normal size distribution. The hydrodynamic size was 117.90 ± 1.15 nm and zeta potential was -32.7 ± 1.7 mV in distilled water (Figure S1). The hydrodynamic size and Zeta potential of SiNPs in K-medium were 104.29 ± 0.69 nm and -42.21 ± 2.17 mV, respectively. Our data suggested good monodispersity and stability of SiNPs.

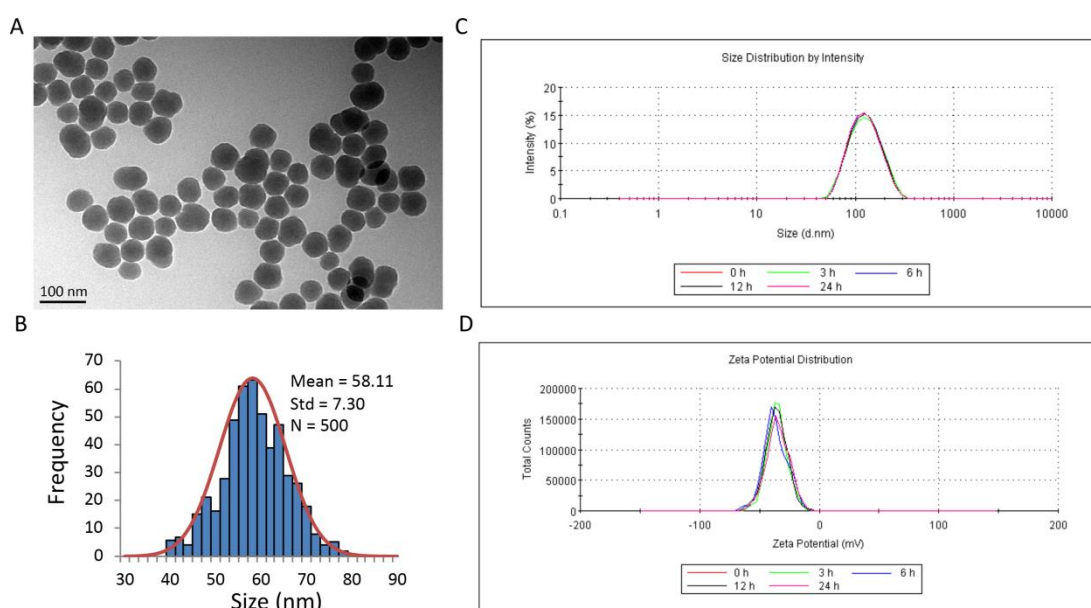


Figure S1. Characterization of SiNPs. A. TEM images showed the spherical and well-dispersed particles. B. Normal distribution diagram with a mean diameter of 58 ± 7 nm. C. Size distribution by intensity. D. Zeta potential distribution. [1] Feng L, Yang X, Liang S, Xu Q, Miller MR, Duan J, et al. Silica nanoparticles trigger the vascular endothelial dysfunction and prethrombotic state via miR-451 directly regulating the IL6R signaling pathway. *Particle and fibre toxicology*. 2019;16:16.

The uptake of SiNPs

Red fluorescence-labeled SiNPs treated for 2 h, and then observed nanoparticle uptake in *C. elegans* by the fluorescence microscopy (Nikon, AZ100, Japan). The fluorescence intensity of SiNPs was mainly distributed in the tail, intestinal tube, pharynx and head in the worm (Figure S2).

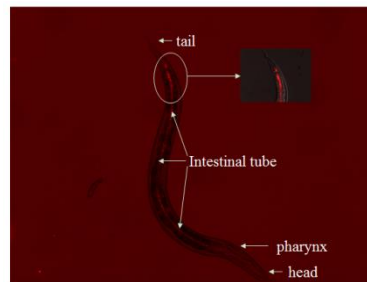


Figure S2. SiNPs uptake by *C. elegans* for 2h.

Table S1. qRT-PCR primers.

Gene Name	Forward primer	Reverse primer
Tba-1	TCAAACTGCCATCGCCGCC	TCCAAGCGAGACCAGGCTTCAG
Ins-7	AGGTCCAGCAGAACCAGAAGAGTC	AAGTCGTCGGTGCATTCTTCACG
Ist-1	TCCTCCTCCTCCTCGTTAAGCAC	TTCGCTAGATCCGCAGTCACAAC
Daf-16	CCGTGGATCGTGTGCTCAGAATC	CAGGCAGTGGAGATGAGTTGGATG
Ftt-2	ACTGTGTTTCGCCTTGGTCTTGC	CACGGAGAAGCTGCATGATGAGG
Fat-5	GTCAGCCTTCATCGCCTTCTACAC	TGTGACCTCCTTCTCCGACTGC
Rho-1	CCAGACGTGTATGTGCCGACTG	GAGAGTGGACGCAGACGATCATAG

Table S2. The up-regulated differentially expressed genes in nematodes.

Number	Gene Symbol	SiNPs-weight	Control-weight	Fold	ANOVA
		Avg signal (log2)	Avg signal (log2)	Change	p-value
1	C50F7.5	10.26	4.87	41.8	0.000425
2	R08F11.7	7.9	3.5	21.14	0.000052
3	ZK218.1	7.35	3.26	16.98	0.000107
4	Y73B3A.1	8.94	5.11	14.17	0.005763
5	ins-8	7.6	3.93	12.75	0.000118
6	abu-6	7.3	3.73	11.84	0.015858
7	clec-3	5.94	2.47	11.12	0.000317
8	abu-7	8.85	5.49	10.26	0.008242
9	cyp-35C1	6.21	3.07	8.81	0.004318
10	Y51H7C.13	5.5	2.41	8.56	0.018101
11	pqn-54	5.83	2.78	8.27	0.00509
12	F14H12.3	7.63	4.68	7.69	0.00004
13	pqn-57	6.02	3.1	7.56	0.003476
14	sydn-1	7.13	4.27	7.28	0.008455
15	H02F09.3	5.22	2.54	6.42	0.000564
16	wip-1	9.14	6.49	6.31	0.011657
17	Y39B6A.1	6.49	3.84	6.26	0.016543
18	scl-14	6.88	4.31	5.97	0.00003
19	K11D9.5	8.44	5.87	5.94	0.043899
20	gpx-3	8.17	5.61	5.92	0.000062
21	F55G11.4	6.67	4.15	5.73	0.001121
22	W08E12.6	7.19	4.71	5.6	0.003197
23	R07C12.1	7	4.52	5.59	0.003052
24	C05C10.5	10.81	8.33	5.59	0.027051
25		6.91	4.44	5.56	0.005578
26	T28B11.11	6.21	3.8	5.3	0.034338
27	set-9	8.21	5.86	5.11	0.005673
28	T28B11.22	6.44	4.11	5.02	0.020221
29	Y46H3A.5	6.56	4.24	5	0.005009
30	sygl-1	8.08	5.76	4.99	0.015682
31	larp-5	10.35	8.06	4.89	0.012937

32	T06C12.14	3.55	1.26	4.88	0.007872
33	maph-1.2	7.65	5.38	4.83	0.005141
34	F34D10.4	8.01	5.77	4.74	0.008896
35	puf-6	8.18	5.95	4.71	0.025941
36	T22F3.2	8.75	6.53	4.69	0.015267
37	T06E4.12	3.54	1.32	4.66	0.014974
38	tpx1-1	9.84	7.62	4.66	0.037191
39	sir-2.3	5.17	2.98	4.59	0.000244
40	mct-2	9.69	7.49	4.59	0.039341
41	R11.2	6.59	4.41	4.52	0.000096
42	F32D1.7	8.61	6.46	4.43	0.001364
43	F10D7.5	8.93	6.79	4.42	0.002459
44	sap-49	8.16	6.02	4.41	0.008106
45	F55D12.5	9.98	7.86	4.35	0.020807
46	col-161	5.1	3.01	4.25	0.003362
47		5.8	3.72	4.25	0.017931
48	R03C1.1	7.05	4.97	4.22	0.004942
49	pqn-76	4.63	2.55	4.22	0.009744
50	Y54G2A.28	7.31	5.24	4.22	0.010887
51	col-133	5.2	3.14	4.17	0.026663
52	myo-2	9.36	7.3	4.16	0.023387
53	C48A7.10	5.21	3.17	4.1	0.032828
54	dpy-13	5.2	3.17	4.09	0.023148
55	pqn-74	9.16	7.14	4.05	0.003747
56	mex-1	10.04	8.03	4.01	0.011652
57	nspe-6	6.88	4.9	3.96	0.002582
58	par-2	8.44	6.45	3.96	0.009756
59	rnp-8	9.75	7.79	3.89	0.011181
60	Y48C3A.12	9.05	7.12	3.82	0.020596
61	T28B11.4	6	4.07	3.8	0.008671
62	cebp-1	8.05	6.14	3.77	0.011822
63	F22H10.2	7.74	5.83	3.76	0.013555
64	ZC21.3	6.8	4.9	3.72	0.00231
65	Y46D2A.2	4.13	2.24	3.7	0.003931
66	K08D10.10	6.46	4.59	3.67	0.003368

67	Y119C1B.12	4.1	2.23	3.65	0.000508
68	myo-1	9.66	7.79	3.64	0.027007
69	pqn-63	6.55	4.69	3.63	0.027866
70	C14C6.5	10.6	8.75	3.62	0.000051
71	apx-1	9.09	7.23	3.62	0.029965
72	Y55B1AR.2	9	7.16	3.57	0.010942
73	cdc-37	8.62	6.8	3.53	0.011862
74	F59F4.2	11.74	9.93	3.5	0.007474
75	F22G12.5	8.25	6.44	3.5	0.00804
76	ZK355.2	8.01	6.21	3.49	0.011922
77	ubxn-1	9.18	7.38	3.49	0.04659
78	klp-7	8.27	6.47	3.48	0.024361
79	ZC412.13	4.68	2.89	3.46	0.002445
80	F54A3.6	7.1	5.32	3.42	0.027759
81	abu-10	6.15	4.38	3.41	0.012094
82	oac-54	4.1	2.33	3.4	0.006943
83	piit-1	6.19	4.43	3.39	0.000239
84	pqn-31	7.91	6.15	3.39	0.030878
85	Y41E3.11	8.88	7.12	3.38	0.010091
86	F01D5.5	7.88	6.12	3.37	0.000309
87	dod-19	8.14	6.38	3.37	0.000618
88	mys-2	8.15	6.4	3.36	0.011555
89	zip-10	8.78	7.03	3.35	0.000528
90	Y46H3C.5	6.17	4.43	3.35	0.01377
91	daf-5	8.08	6.35	3.32	0.000891
92	zyg-8	7.28	5.54	3.32	0.018194
93	hmg-1.1	12.14	10.41	3.31	0.003036
94	mab-10	6.75	5.03	3.31	0.024943
95	cpg-1	11.63	9.9	3.3	0.001236
96	ZC53.1	5.57	3.84	3.3	0.027784
97	hpo-26	5.42	3.7	3.28	0.00171
98	atx-2	9.61	7.89	3.28	0.003402
99	hpo-38	6.1	4.39	3.28	0.032743
100	Y54G2A.26	9.14	7.43	3.26	0.003626
101	glna-1	6.58	4.88	3.26	0.039468

102	sumv-2	9.12	7.42	3.23	0.023029
103	F56D12.10	9.1	7.42	3.22	0.032426
104	W04B5.3	7.44	5.76	3.21	0.017659
105	mct-2	8.65	6.97	3.21	0.029228
106	Y75B8A.3	5.36	3.7	3.17	0.010116
107	attf-3	7.95	6.29	3.17	0.010246
108	Y46D2A.2	6.95	5.29	3.15	0.01798
109	pqn-82	7.45	5.79	3.15	0.021411
110	tos-1	8.44	6.8	3.12	0.015602
111	F41G4.7	4.36	2.72	3.12	0.04081
112	C01G10.5	6.05	4.41	3.12	0.041136
113	ZK596.1	7.92	6.28	3.11	0.003076
114	F13H6.26	5.57	3.94	3.11	0.021171
115	C18H9.6	7.27	5.64	3.1	0.001679
116		6.2	4.57	3.1	0.027423
117	Y48B6A.18	5.99	4.36	3.09	0.009923
118	C04A2.10	6.12	4.49	3.09	0.011266
119		6.53	4.91	3.07	0.024742
120	tsn-1	9.84	8.23	3.06	0.005761
121	sbp-1	7.44	5.83	3.06	0.015115
122	F19B10.5	5.58	3.96	3.06	0.029269
123	Y40B1A.3	6.29	4.68	3.05	0.014018
124	str-163	4.59	3	3.02	0.001627
125	K02A4.11	4.35	2.76	3.02	0.001973
126	abu-4	5.52	3.93	3.02	0.013967
127	ZK180.5	8.63	7.05	3	0.001498
128	col-71	6.04	4.46	3	0.005935
129	C53C9.2	10.29	8.71	3	0.026636
130	R09F10.18	4.16	2.58	2.99	0.000866
131	Y17G7B.17	9.28	7.7	2.98	0.015689
132	F30B5.4	6.56	4.98	2.98	0.022303
133	tfg-1	8.1	6.54	2.96	0.000162
134	cbd-1	11.69	10.12	2.96	0.013381
135	ddl-2	7.03	5.47	2.95	0.013044
136	ZC15.1	4.51	2.96	2.93	0.000971

137	ins-7	5.2	3.64	2.93	0.001604
138	sea-2	8.16	6.61	2.93	0.002916
139	F41G4.4	3.35	1.8	2.92	0.00973
140	K08D10.14	6.99	5.45	2.91	0.012788
141	wts-1	7.75	6.22	2.9	0.00462
142	lat-2	5.83	4.29	2.9	0.014273
143	cdk-12	9.65	8.12	2.9	0.037464
144	F52G3.1	8.7	7.17	2.89	0.001272
145	C08G5.7	5.74	4.21	2.89	0.004621
146	C49G7.10	6.32	4.79	2.88	0.001553
147	F43C11.14	7.18	5.65	2.88	0.025749
148	ZC266.1	6.73	5.2	2.88	0.026398
149	npp-8	8.94	7.42	2.87	0.005363
150	sam-10	8.67	7.16	2.86	0.005232
151	srpa-72	9.06	7.54	2.86	0.016653
152	B0403.3	6.62	5.1	2.86	0.02637
153	R07B1.9	6.42	4.9	2.86	0.035786
154	R02F2.1	10.29	8.77	2.85	0.021201
155	Y47D3B.6	6.17	4.67	2.84	0.027041
156	mex-5	11.61	10.11	2.84	0.046419
157	parp-1	8.8	7.3	2.83	0.049317
158	C54D2.1	5.7	4.2	2.82	0.0104
159	siah-1	11.1	9.61	2.81	0.013298
160	set-26	8.28	6.79	2.8	0.022421
161	Y9D1A.1	5.62	4.14	2.8	0.039282
162	dod-17	5.75	4.27	2.79	0.000815
163	abt-2	6.39	4.91	2.79	0.02289
164	dbn-1	9.31	7.84	2.78	0.006545
165	K11H12.4	6.41	4.94	2.77	0.001477
166	npp-4	9.23	7.76	2.77	0.025201
167	ztf-22	7.81	6.34	2.76	0.006409
168	C38C3.3	3.79	2.32	2.76	0.033431
169	rle-1	7.95	6.48	2.75	0.002984
170	ZK1010.5	4.62	3.16	2.74	0.004545
171	ing-3	8.14	6.69	2.74	0.014924

172	Y48G8AL.10	7.54	6.08	2.74	0.031934
173	F35E8.10	8.78	7.33	2.73	0.000486
174		9.06	7.62	2.73	0.027739
175	nspb-7	4.41	2.96	2.72	0.000988
176	pgp-1	5.21	3.76	2.72	0.010667
177	snx-14	7.84	6.4	2.72	0.010855
178	pha-4	8.27	6.84	2.71	0.002082
179	pqn-36	6.89	5.45	2.71	0.004819
180	lin-41	9.92	8.48	2.71	0.009575
181	Y53F4B.9	7.39	5.95	2.71	0.018899
182	F32A11.3	5.7	4.27	2.7	0.003319
183	xpo-2	8.92	7.49	2.7	0.048901
184	T28B11.17	6.07	4.65	2.69	0.005836
185	spat-2	9.6	8.18	2.69	0.011232
186	M03A1.12	4.72	3.3	2.68	0.006409
187	T05C7.3	5.85	4.43	2.68	0.017181
188	F11G11.5	9.51	8.09	2.68	0.040697
189	K06A9.1	6.79	5.37	2.67	0.000217
190	K08A2.1	7.16	5.74	2.67	0.000223
191	Y59C2A.2	7.9	6.48	2.67	0.006259
192	Y51H7C.15	7.31	5.89	2.67	0.026833
193	F31E8.21	5.38	3.96	2.67	0.040879
194	Y49G5B.6	3.66	2.25	2.66	0.00171
195	F41E6.11	4.61	3.2	2.66	0.002448
196	T22B11.3	5.28	3.87	2.66	0.01244
197	Y50D7A.8	8.1	6.69	2.66	0.01853
198	irg-2	5.2	3.79	2.65	0.000299
199	C34H4.2	7.31	5.91	2.65	0.01196
200	rsr-1	7.62	6.22	2.64	0.001532
201	pod-1	9.51	8.11	2.64	0.003708
202	grd-6	5.71	4.31	2.64	0.021738
203	T24B8.4	8.37	6.98	2.63	0.001615
204	pqn-20	10.45	9.05	2.63	0.013919
205	Y67H2A.10	8.92	7.53	2.63	0.040378
206	hsp-17	4.17	2.78	2.61	0.001354

207	F35E8.19	6.09	4.71	2.6	0.000057
208	F26F2.7	8.58	7.2	2.6	0.018103
209	nhr-7	6.95	5.57	2.6	0.023695
210	Y47D7A.13	6.58	5.21	2.59	0.001795
211	tra-1	8.7	7.33	2.59	0.006876
212	Y57A10A.31	9.36	7.99	2.59	0.00968
213	ergo-1	9.72	8.35	2.59	0.024027
214	rog-1	9.55	8.17	2.59	0.02443
215	M151.7	6.17	4.81	2.58	0.015636
216	Y42H9AR.1	7.94	6.58	2.58	0.018993
217	col-135	6.05	4.69	2.57	0.002321
218	F17C11.1	9.6	8.24	2.57	0.016679
219	abu-8	4.17	2.82	2.56	0.015604
220		4.11	2.75	2.56	0.0325
221	pgp-14	5.8	4.44	2.56	0.033226
222	ZC239.22	5.84	4.49	2.55	0.000253
223	pqn-75	5.51	4.16	2.55	0.000481
224	phat-3	4.06	2.71	2.55	0.003773
225	H11E01.3	7.06	5.71	2.55	0.006089
226	dhhc-7	8.5	7.15	2.55	0.009581
227	F19B2.5	8.48	7.13	2.55	0.023844
228	tcc-1	9.85	8.49	2.55	0.028287
229	C09F12.2	4.9	3.56	2.55	0.030704
230	dot-1.1	8.78	7.44	2.54	0.005209
231	R03G8.6	4.2	2.86	2.54	0.005511
232	F01G4.4	8.67	7.32	2.54	0.014432
233	Y71F9AL.9	11.14	9.8	2.54	0.015941
234	pqn-39	7.83	6.49	2.54	0.017961
235	rol-1	5.61	4.27	2.54	0.027406
236	C41H7.5	4.56	3.22	2.54	0.040832
237	unc-34	8.96	7.62	2.53	0.000334
238	R04E5.8	6.66	5.32	2.53	0.004292
239	Y39E4A.3	7.21	5.87	2.53	0.011885
240	Y94H6A.10	5.98	4.64	2.52	0.000342
241	pcp-4	5.5	4.17	2.52	0.018165

242	Y49G5B.2	3	1.67	2.51	0.000686
243	rga-4	9.45	8.12	2.51	0.010405
244	msi-1	9.89	8.56	2.51	0.016195
245	cut-4	4.26	2.93	2.51	0.041275
246	ZK809.1	2.72	1.4	2.51	0.046412
247	W05B5.1	8.59	7.26	2.5	0.000217
248	R07C12.2	7.36	6.03	2.5	0.013892
249	ncx-8	3.22	1.91	2.49	0.002704
250	lag-2	4.34	3.02	2.49	0.016655
251	mvk-1	9.48	8.16	2.49	0.022664
252	ZK121.2	6.98	5.66	2.49	0.03805
253	M60.9	4	2.68	2.48	0.00204
254	Y37H9A.3	6.6	5.29	2.48	0.004454
255	wwp-1	10.36	9.05	2.48	0.008762
256	unc-94	10.04	8.74	2.47	0.040872
257	F09C8.2	8.62	7.32	2.46	0.001597
258	adm-2	7.3	6.01	2.46	0.007019
259	Y56A3A.6	6.82	5.52	2.46	0.013865
260	igeg-2	6.42	5.13	2.45	0.001465
261	ZC266.1	4.36	3.06	2.45	0.006569
262	Y39F10B.1	9.36	8.06	2.45	0.009051
263	patr-1	10.53	9.23	2.45	0.019347
264	Y53F4B.21	7.57	6.27	2.45	0.026671
265	H18N23.2	7.62	6.32	2.45	0.030998
266	F31A3.5	6.13	4.85	2.44	0.000085
267	C01F1.6	7.99	6.7	2.44	0.005227
268	pqn-94	10.22	8.93	2.44	0.013876
269	col-144	7.96	6.68	2.44	0.048635
270	nhr-27	8.38	7.1	2.43	0.033143
271	R166.6	10.56	9.28	2.42	0.004473
272	ZC15.3	3.78	2.5	2.42	0.014196
273	D1037.1	6.92	5.64	2.42	0.024057
274	F43C1.7	4.25	2.98	2.41	0.004672
275	Y49F6B.8	3.3	2.03	2.41	0.004979
276	abu-11	7.52	6.25	2.41	0.010932

277	Y37D8A.17	7.94	6.68	2.41	0.015314
278	sgt-1	9.39	8.12	2.41	0.029359
279	hda-10	6.3	5.04	2.41	0.041895
280	gpb-1	10.36	9.1	2.4	0.000358
281	srap-1	9.51	8.25	2.4	0.002171
282	C30F2.3	5.59	4.32	2.4	0.02502
283	cyk-4	9.99	8.73	2.4	0.027431
284	T20B5.2	7.11	5.85	2.4	0.030322
285	mbtr-1	8.03	6.77	2.4	0.034358
286	natc-1	9.56	8.29	2.4	0.03565
287	T22B7.3	7.52	6.26	2.39	0.00014
288	uggt-2	3.75	2.49	2.39	0.002002
289	pqn-72	6.23	4.98	2.39	0.009626
290	Y79H2A.3	7.73	6.48	2.38	0.01131
291	C25F9.16	5.39	4.14	2.38	0.017835
292	ceh-92	8.15	6.9	2.38	0.042043
293	mcm-7	9.92	8.67	2.38	0.042495
294	Y66A7AL.1	3.2	1.95	2.37	0.001104
295	T28B11.13	4.76	3.51	2.37	0.010484
296	Y48G1C.8	8.55	7.31	2.37	0.022202
297	unc-11	9.12	7.87	2.37	0.023387
298	egl-3	10.23	8.99	2.37	0.034006
299	nhr-119	7.15	5.91	2.36	0.005218
300	srr-2	3.12	1.88	2.36	0.028064
301	F36D3.16	2.87	1.64	2.35	0.000222
302	F37H8.3	5.18	3.95	2.35	0.002091
303	C05E4.12	5.71	4.48	2.35	0.009291
304	F55G11.2	3.78	2.55	2.35	0.012856
305	F15D4.4	5.02	3.79	2.35	0.031582
306	Y57G11C.9	9.05	7.82	2.34	0.000128
307	klf-1	7.82	6.6	2.34	0.003761
308	C15C6.3	7.61	6.39	2.34	0.008795
309	Y113G7C.1	4.03	2.8	2.34	0.014473
310	C39D10.7	10.12	8.89	2.34	0.022795
311	abt-4	6.43	5.2	2.34	0.02653

312	unc-51	8.87	7.65	2.33	0.000312
313	F25A2.1	3.34	2.12	2.33	0.004511
314	tnt-4	7.86	6.64	2.33	0.012914
315	gld-1	11.43	10.21	2.33	0.031129
316	hsp-16.2	3.06	1.85	2.32	0.006757
317	sec-23	8.55	7.34	2.32	0.008796
318	kin-19	11.47	10.25	2.32	0.022707
319	wnk-1	10.1	8.88	2.32	0.023673
320		4.54	3.32	2.32	0.026931
321	F26H9.2	8.4	7.18	2.32	0.039807
322		8.16	6.95	2.31	0.005761
323		5.11	3.9	2.31	0.01658
324	col-125	10.31	9.1	2.31	0.017573
325	max-2	9.8	8.59	2.31	0.025318
326	cgp-1	9.98	8.77	2.31	0.032035
327	R148.3	8.33	7.13	2.3	0.003031
328	asns-1	6.58	5.38	2.3	0.013538
329	Y59C2A.3	6.93	5.73	2.3	0.017242
330	C50F2.2	6.62	5.41	2.3	0.017719
331	mtm-9	7.6	6.4	2.3	0.040794
332	T26A8.4	8.68	7.48	2.3	0.042216
333	T28D9.9	4.31	3.11	2.29	0.010899
334	ram-2	8.45	7.26	2.29	0.01767
335	epn-1	10.98	9.79	2.29	0.020705
336	arid-1	8.13	6.94	2.28	0.002748
337	lec-3	7.84	6.66	2.28	0.008795
338	C12D12.1	7.28	6.09	2.28	0.011527
339	R12A1.3	7.57	6.38	2.28	0.011566
340	T06E4.8	4.25	3.07	2.28	0.02846
341	col-166	4.24	3.05	2.28	0.030893
342	sid-3	7.36	6.17	2.27	0.002561
343	K11D2.4	8.64	7.46	2.27	0.01093
344	T24C4.4	6.43	5.26	2.26	0.001408
345	bath-40	9.72	8.54	2.26	0.017486
346	swns-1	8.96	7.79	2.25	0.00009

347	Y20F4.4	7.66	6.49	2.25	0.002627
348	abts-4	8.1	6.94	2.25	0.00932
349		2.61	1.44	2.25	0.012433
350	W09G3.6	8.22	7.05	2.25	0.023764
351	ins-11	4.28	3.11	2.25	0.029106
352	col-169	4.29	3.13	2.24	0.012567
353	ztf-2	5.65	4.48	2.24	0.0225
354	puf-3	10.34	9.18	2.24	0.029541
355	F55B11.5	3.26	2.09	2.24	0.037325
356	Y55D5A.4	4.96	3.8	2.23	0.003466
357	F47B3.4	4.89	3.73	2.23	0.003607
358	cnp-2	6.15	5	2.23	0.00472
359	nhr-88	8.73	7.57	2.23	0.019844
360	puf-7	6.81	5.65	2.23	0.023987
361	kreg-1	4.84	3.68	2.23	0.035716
362	gfat-1	9.06	7.9	2.23	0.042832
363	pde-3	6.12	4.97	2.22	0.000608
364	F09F7.5	8.47	7.32	2.22	0.020525
365	cit-1.2	8.26	7.12	2.22	0.035012
366	C05D12.7	6.89	5.75	2.21	0.002943
367	ppk-2	8.57	7.42	2.21	0.003671
368	Y75B8A.8	8.07	6.93	2.21	0.006458
369	Y57G11C.51	5.21	4.07	2.21	0.012931
370	maph-1.3	8.17	7.02	2.21	0.01666
371	tyr-2	7.51	6.36	2.21	0.023931
372	Y54G2A.27	4.67	3.53	2.21	0.038006
373	sup-26	9.95	8.81	2.2	0.00043
374	denn-4	8.07	6.93	2.2	0.00643
375	myo-5	8.34	7.21	2.2	0.00673
376	mcm-2	9.21	8.07	2.2	0.011345
377	K05F1.9	5.85	4.71	2.2	0.01345
378	mcm-4	9.46	8.33	2.2	0.037473
379	T15D6.8	4.76	3.62	2.2	0.038646
380	cdr-4	5.19	4.06	2.2	0.041575
381	perm-4	11.83	10.69	2.2	0.042272

382	daz-1	10.55	9.41	2.2	0.043339
383	C06G1.6	7.31	6.18	2.19	0.000535
384	copb-1	9.23	8.1	2.19	0.002145
385	Y106G6A.8	3.98	2.85	2.19	0.003442
386	K09D9.1	4.85	3.72	2.19	0.022473
387	Y92H12BM.1	7.89	6.76	2.19	0.043904
388	rom-4	8	6.87	2.19	0.046612
389	C31H5.8	2.79	1.66	2.18	0.001824
390	C03A7.12	4.8	3.67	2.18	0.003526
391	Y50D4B.1	7.16	6.04	2.18	0.012395
392	F38E9.1	8.37	7.24	2.18	0.038425
393	unc-62	8.92	7.81	2.17	0.000394
394	M01G12.14	4.96	3.84	2.17	0.001543
395	shn-1	7.84	6.72	2.17	0.003706
396	ZK84.1	6.95	5.83	2.17	0.004677
397	T06E4.14	3.53	2.41	2.17	0.005606
398	lmd-5	3.51	2.4	2.17	0.028229
399	Y116A8C.13	5.71	4.59	2.17	0.039255
400	Y49E10.10	4.97	3.86	2.16	0.000734
401	ketn-1	6.96	5.85	2.16	0.003515
402	rsa-2	7.43	6.32	2.16	0.004356
403	Y32B12A.5	3.3	2.19	2.16	0.019621
404	taf-3	7.64	6.53	2.16	0.031318
405	cah-6	6.46	5.35	2.16	0.04558
406	F29G9.1	5.22	4.12	2.15	0.003372
407	T23B5.3	9.05	7.94	2.15	0.010183
408	F17E9.5	4.53	3.43	2.15	0.01378
409	cmd-1	11.25	10.14	2.15	0.033299
410	pqn-59	11.79	10.69	2.15	0.045649
411	ZK470.2	7.55	6.46	2.14	0.002065
412	F53F1.4	7.66	6.57	2.14	0.002191
413	rab-7	11.64	10.54	2.14	0.004495
414	jip-1	5.65	4.55	2.14	0.010004
415	Y9D1A.2	7.8	6.71	2.14	0.01001
416	ida-1	9.03	7.93	2.14	0.01047

417		10.1	9	2.14	0.014465
418	col-117	10.1	9	2.14	0.014465
419	vhp-1	9	7.91	2.14	0.014764
420	pqn-41	7.78	6.69	2.14	0.015985
421	R12B2.12	4.28	3.19	2.14	0.018965
422	C11G10.2	4.87	3.77	2.14	0.027996
423	oig-6	8.47	7.37	2.14	0.039465
424	F31C3.3	8.24	7.15	2.13	0.006604
425	cyp-33A1	5.83	4.74	2.13	0.012163
426	F41H10.3	9.36	8.27	2.13	0.025094
427	taf-2	7.17	6.09	2.13	0.030243
428	gbf-1	8.25	7.17	2.12	0.003222
429	Y50D7A.1	6.96	5.88	2.12	0.003677
430	H43E16.1	6.27	5.18	2.12	0.005163
431	Y43F8B.17	3.12	2.03	2.12	0.008597
432	ceh-39	7.9	6.82	2.12	0.013908
433	ttr-26	6.75	5.66	2.12	0.01548
434	F29G9.14	3.72	2.64	2.12	0.015492
435	Y111B2A.9	8.2	7.11	2.12	0.017748
436	cyb-1	10.13	9.05	2.12	0.022424
437	F35B3.7	7.6	6.51	2.12	0.024868
438	smgl-2	6.69	5.61	2.12	0.045757
439	fipp-1	7.98	6.9	2.12	0.04988
440	C42D4.3	6.93	5.86	2.11	0.002413
441	ntl-3	9.07	7.99	2.11	0.014271
442	T22F3.3	10.26	9.18	2.11	0.01792
443	W05H7.1	6.61	5.53	2.11	0.036731
444	let-805	8.82	7.75	2.1	0.000188
445	tub-2	8.1	7.03	2.1	0.002335
446	pis-1	8.23	7.16	2.1	0.005924
447	col-145	6.27	5.2	2.1	0.021119
448	rimb-1	7.28	6.2	2.1	0.022637
449	scrm-1	7.17	6.1	2.1	0.025168
450	F59B10.3	7.38	6.31	2.1	0.032964
451	K10C3.10	4.31	3.25	2.09	0.001906

452	jmjd-2	8.29	7.23	2.09	0.005045
453	Y54E2A.4	7.55	6.49	2.09	0.007459
454	pqn-87	10.09	9.03	2.09	0.009365
455	pry-1	6.84	5.77	2.09	0.016555
456	acs-13	10.27	9.2	2.09	0.020961
457	tkl-1	8.92	7.86	2.09	0.022431
458	col-17	3.3	2.23	2.09	0.028488
459	C08F8.6	4.69	3.63	2.09	0.030806
460	rde-10	7.41	6.35	2.09	0.032878
461	atm-1	7.47	6.4	2.09	0.038507
462	Y106G6G.4	6.45	5.39	2.09	0.041938
463	F38A6.6	4.72	3.65	2.09	0.04629
464	C15C7.4	5.45	4.39	2.08	0.000715
465	clcc-71	3.75	2.69	2.08	0.003524
466	spat-3	8.27	7.21	2.08	0.007226
467	thn-1	5.65	4.6	2.08	0.007386
468	F13A7.1	3.93	2.87	2.08	0.009257
469	nipa-1	8.76	7.71	2.08	0.020299
470	fbxa-30	3.16	2.1	2.08	0.024973
471	T10B5.10	4.92	3.86	2.08	0.032367
472	C02B10.5	8.87	7.82	2.08	0.035618
473	hil-4	8.38	7.33	2.08	0.04566
474	F37A8.5	10.28	9.23	2.07	0.000442
475	cht-1	8.16	7.11	2.07	0.004126
476	nos-3	9.7	8.65	2.07	0.008875
477	sca-1	11.26	10.21	2.07	0.010617
478	T10B10.3	7.31	6.26	2.07	0.015616
479	par-3	8.75	7.7	2.07	0.019204
480	F53C11.5	9.16	8.11	2.07	0.019459
481	C18H9.3	9.44	8.39	2.07	0.030979
482	enu-3.2	8.96	7.91	2.07	0.038529
483	ser-4	5.4	4.35	2.07	0.040452
484	cdh-12	4.75	3.71	2.06	0.000214
485	cpn-4	8.57	7.52	2.06	0.001808
486	K10F12.8	5.44	4.4	2.06	0.003269

487	T05B11.13	4.92	3.88	2.06	0.006325
488	yap-1	9.63	8.58	2.06	0.007322
489	rbc-2	8.49	7.45	2.06	0.009962
490	T21H8.5	7.48	6.44	2.06	0.024307
491	Y48G8AL.16	3.9	2.86	2.06	0.024599
492	plin-1	10.54	9.5	2.06	0.0437
493	Y43F8B.3	5.92	4.88	2.05	0.002539
494	gsto-3	8.68	7.64	2.05	0.00865
495	unc-69	6.69	5.66	2.05	0.039775
496	rme-2	9.23	8.2	2.05	0.043206
497	ZC123.11	5.23	4.2	2.04	0.000246
498	efhd-1	7.96	6.93	2.04	0.001648
499	hda-4	8.44	7.41	2.04	0.004638
500	F09C6.1	3.01	1.99	2.04	0.006183
501	K08D12.6	6.32	5.29	2.04	0.006441
502	snrp-200	8.71	7.69	2.04	0.008175
503	T23E7.2	8.2	7.18	2.04	0.008569
504	F32H2.7	4.48	3.45	2.04	0.011272
505	zer-1	10.16	9.13	2.04	0.028611
506	C18F10.7	8.96	7.94	2.04	0.038254
507	spch-3	3.57	2.54	2.04	0.043729
508	K10F12.7	4.73	3.71	2.03	0.000287
509	exc-6	6.36	5.34	2.03	0.000485
510		5.16	4.13	2.03	0.004275
511	ztf-6	9.11	8.09	2.03	0.004419
512	fig-1	5.38	4.36	2.03	0.007526
513	lip-1	9.82	8.8	2.03	0.008847
514	E01B7.1	7.46	6.44	2.03	0.013086
515	prk-2	6.83	5.81	2.03	0.026825
516	daf-12	7.98	6.96	2.03	0.042469
517	Y18H1A.7	6.17	5.15	2.02	0.003961
518	T22B11.4	7.67	6.65	2.02	0.006948
519	C36F7.22	4.29	3.27	2.02	0.00754
520	mbk-1	8.25	7.23	2.02	0.01036
521	unc-53	8.05	7.03	2.02	0.015119

522	zfp-1	9.1	8.09	2.02	0.017215
523	uaf-1	8.86	7.84	2.02	0.03203
524	T08B6.4	4.7	3.68	2.02	0.038465
525	Y54E10A.26	3.33	2.32	2.02	0.042468
526	clcc-17	5.74	4.74	2.01	0.002436
527	F32B4.4	7.43	6.43	2.01	0.00678
528	puf-9	9.41	8.41	2.01	0.009792
529	lon-1	5.81	4.8	2.01	0.021603
530	clcc-198	3.46	2.45	2.01	0.031336
531	cyb-3	11.29	10.28	2.01	0.041633
532	T20F5.7	8.71	7.7	2.01	0.043554
533	K03E5.2	8.26	7.26	2	0.000334
534	F46G10.2	7.24	6.24	2	0.000898
535	Y43F8C.3	7.66	6.66	2	0.001349
536	ark-1	7.43	6.43	2	0.003476
537	scrm-5	3.18	2.18	2	0.006073
538	H28G03.2	7.02	6.02	2	0.009016
539	T21B6.16	2.81	1.81	2	0.011211
540	Y51H1A.2	7.03	6.03	2	0.030958
541	trp-2	4.9	3.9	2	0.032
542	sma-5	8.33	7.34	1.99	0.000039
543	chd-7	9.03	8.03	1.99	0.001416
544	tam-1	9.27	8.27	1.99	0.001419
545	pax-3	4.93	3.93	1.99	0.001842
546	Y48E1B.2	6.23	5.23	1.99	0.003936
547	Y54F10BM.9	5.87	4.88	1.99	0.004798
548	T26H5.11	3.58	2.59	1.99	0.008595
549	F27E5.3	4.64	3.65	1.99	0.017222
550	spin-4	7.85	6.86	1.99	0.029375
551	nspb-11	5.96	4.97	1.99	0.035006
552	dhhc-1	8.32	7.33	1.98	0.001059
553	ncx-2	8.76	7.78	1.98	0.001213
554	ZC101.1	7.65	6.66	1.98	0.001394
555	ZK1290.5	5.61	4.62	1.98	0.002956
556	ZC455.1	5.62	4.64	1.98	0.00361

557	col-109	7.08	6.09	1.98	0.004779
558	T06E4.10	4.48	3.49	1.98	0.019104
559	col-10	11.17	10.19	1.98	0.025227
560	Y43F8C.9	5.23	4.25	1.98	0.029949
561	F47B3.5	3.52	2.53	1.98	0.035193
562	C39D10.1	2.93	1.95	1.98	0.035215
563	K09H11.9	5.08	4.09	1.98	0.039209
564	alg-2	7.47	6.49	1.97	0.000452
565		9.02	8.04	1.97	0.000632
566	C45E5.4	4.98	4	1.97	0.001028
567	maph-1.1	6.89	5.91	1.97	0.001089
568	dnj-13	9.51	8.53	1.97	0.003108
569	ceh-100	7.97	6.99	1.97	0.008597
570	Y52B11C.1	8.49	7.51	1.97	0.010942
571	alg-3	4.75	3.77	1.97	0.024217
572	M106.2	8.78	7.8	1.97	0.027097
573	grk-1	7.18	6.21	1.96	0.002115
574	gei-4	9.06	8.09	1.96	0.003836
575	C02E7.6	7.47	6.49	1.96	0.004275
576	T19D12.4	7.51	6.54	1.96	0.005278
577	ZK896.4	4.91	3.94	1.96	0.006058
578	cbp-1	10.21	9.24	1.96	0.008765
579	C34E11.2	6.44	5.47	1.96	0.016049
580	tba-1	10.19	9.22	1.96	0.027727
581	M57.2	8.08	7.11	1.96	0.047554
582	ell-1	9.37	8.41	1.95	0.000529
583	cmk-1	6.84	5.87	1.95	0.000538
584	moe-3	9.2	8.23	1.95	0.001359
585	Y82E9BL.5	2.1	1.14	1.95	0.001898
586	mrp-7	8.33	7.37	1.95	0.003052
587	pes-4	8.2	7.24	1.95	0.004466
588	T28B11.7	6.3	5.34	1.95	0.010098
589	F49B2.6	4.75	3.79	1.95	0.012139
590	dmd-6	7.55	6.58	1.95	0.027743
591	M01E5.3	9.8	8.84	1.95	0.043573

592	vab-19	6.84	5.88	1.94	0.000413
593	pod-2	9.29	8.33	1.94	0.000551
594	sop-2	6.76	5.81	1.94	0.000838
595	Y105C5B.15	7.13	6.18	1.94	0.001397
596	odc-1	7.96	7.01	1.94	0.002071
597	bris-1	8.36	7.4	1.94	0.004541
598	trp-4	4.01	3.05	1.94	0.005913
599	sli-1	8.74	7.79	1.94	0.009503
600	C45G7.4	6.21	5.26	1.94	0.011022
601	ego-2	8.23	7.28	1.94	0.015213
602	glct-6	7.49	6.53	1.94	0.01618
603	rsp-8	7.51	6.55	1.94	0.02431
604	sut-1	7.61	6.65	1.94	0.028094
605	R06B10.1	2.9	1.94	1.94	0.034179
606	lys-3	4.81	3.86	1.94	0.043506
607	R05H10.3	8.27	7.31	1.94	0.048539
608	C05E11.14	3.63	2.68	1.93	0.001034
609	ubxn-3	9.87	8.93	1.93	0.001129
610	lin-66	10.37	9.42	1.93	0.001224
611	Y75B8A.13	6.97	6.02	1.93	0.019047
612	B0041.11	6.99	6.05	1.93	0.025019
613	2RSSE.7	7.52	6.57	1.93	0.027419
614	Y55F3BR.16	2.87	1.92	1.93	0.030923
615	Y39B6A.81	2.87	1.92	1.93	0.030923
616	rme-4	7.32	6.37	1.93	0.032238
617	smg-6	7.15	6.21	1.93	0.035199
618	B0491.9	3.08	2.13	1.93	0.038698
619	wsp-1	8.28	7.34	1.92	0.001854
620	T21C9.9	4.63	3.68	1.92	0.003978
621	fri-1	7.79	6.85	1.92	0.006621
622	tag-343	6.86	5.92	1.92	0.007178
623	F09C6.3	3.94	3	1.92	0.011471
624	epc-1	9.97	9.03	1.92	0.012329
625	unc-54	11.02	10.08	1.92	0.013365
626	D2045.2	7.14	6.2	1.92	0.01614

627	F13D11.12	3.97	3.03	1.92	0.029635
628	vgl-1	10.73	9.78	1.92	0.031824
629	F13H6.18	4.04	3.1	1.92	0.036475
630	mrp-4	8.4	7.46	1.92	0.040176
631	trap-3	10.92	9.98	1.92	0.047398
632	dpy-3	7.53	6.6	1.91	0.001696
633	nas-30	4.57	3.64	1.91	0.003189
634	spe-8	3.01	2.08	1.91	0.004159
635	Y48G8AL.12	9.64	8.71	1.91	0.007445
636	M60.7	9.2	8.27	1.91	0.008853
637	C41H7.3	6.06	5.13	1.91	0.009758
638	clec-4	4.82	3.89	1.91	0.009838
639	T20F5.5	4.14	3.2	1.91	0.012353
640	ZK616.65	2.56	1.63	1.91	0.018734
641	imb-3	10.78	9.84	1.91	0.020473
642	skpo-2	7.41	6.48	1.91	0.023277
643	Y73B6BL.23	9.24	8.3	1.91	0.027616
644	smg-2	8.38	7.44	1.91	0.036599
645	pho-8	3.35	2.43	1.9	0.003269
646	pqn-18	8.65	7.73	1.9	0.003281
647	Y32H12A.8	7.32	6.4	1.9	0.003285
648	let-526	9.78	8.85	1.9	0.005318
649	C36H8.1	4.25	3.33	1.9	0.007911
650	pqn-15	6.7	5.77	1.9	0.01146
651	Y54E10A.25	4.14	3.21	1.9	0.013368
652	Y39B6A.25	3.87	2.95	1.9	0.032816
653	wago-10	3.24	2.31	1.9	0.037796
654	W09D6.1	6.26	5.34	1.9	0.039808
655	nape-2	5.06	4.14	1.89	0.000199
656		10.42	9.5	1.89	0.001656
657	zfp-3	6.45	5.53	1.89	0.009144
658	aexr-2	3.93	3.01	1.89	0.011272
659	nrd-1	9.3	8.38	1.89	0.011767
660	met-1	8.58	7.66	1.89	0.018274
661	bcl-11	8.78	7.87	1.89	0.024396

662	D1044.6	7.55	6.63	1.89	0.036905
663		4.24	3.32	1.89	0.037898
664	athp-2	7.98	7.06	1.89	0.045717
665	T20G5.8	6.46	5.55	1.88	0.001146
666	Y58A7A.3	4.79	3.88	1.88	0.004033
667	C26F1.1	9.01	8.11	1.88	0.008213
668	tbx-11	5.19	4.28	1.88	0.011254
669	pqn-79	2.45	1.54	1.88	0.01167
670	clcc-33	3.7	2.8	1.88	0.017028
671	glct-3	2.93	2.02	1.88	0.01796
672	fkx-7	9.79	8.88	1.88	0.018814
673	T27B1.4	3.38	2.47	1.88	0.023683
674	T01H3.7	5.37	4.45	1.88	0.025172
675	clcc-173	7.65	6.74	1.88	0.027732
676	ntl-3	5.78	4.87	1.88	0.03151
677	C33G8.2	4.81	3.9	1.88	0.037087
678	zyg-9	9	8.1	1.88	0.040468
679	dpy-4	4.61	3.7	1.88	0.042112
680	cpg-2	12.03	11.12	1.88	0.049945
681	hil-3	8.48	7.58	1.87	0.000193
682	lin-42	7.12	6.22	1.87	0.000248
683	hecw-1	5.44	4.54	1.87	0.008311
684	F22F7.7	5.6	4.7	1.87	0.01969
685	T28F3.5	5.46	4.56	1.87	0.021965
686	C54G6.3	5.28	4.38	1.87	0.029264
687	T10E10.4	4.67	3.76	1.87	0.032743
688	catp-4	3.75	2.84	1.87	0.034584
689	C35A5.4	3.03	2.12	1.87	0.036364
690	R03E9.9	4.96	4.06	1.87	0.039304
691	taf-4	7.35	6.45	1.87	0.040248
692	Y44E3A.4	9.19	8.28	1.87	0.04304
693	ZK6.11	5.9	5	1.86	0.000216
694	acd-1	5.17	4.27	1.86	0.000424
695	gpd-1	7.66	6.77	1.86	0.001249
696	F13D12.9	7.18	6.28	1.86	0.001682

697	lit-1	8.78	7.88	1.86	0.002908
698	cTel55X.1	6.71	5.81	1.86	0.004907
699	T24D1.6	4.65	3.76	1.86	0.005774
700	F53H2.3	9.34	8.44	1.86	0.007666
701	Y71G12B.33	2.52	1.63	1.86	0.008573
702	crh-1	8.85	7.95	1.86	0.013145
703	npp-10	8.45	7.55	1.86	0.01661
704	attf-5	6.3	5.41	1.86	0.025607
705	T23H2.3	8.25	7.35	1.86	0.027157
706	T23B3.5	3.14	2.24	1.86	0.029583
707	cyld-1	9.7	8.8	1.86	0.04412
708	kel-8	5.98	5.09	1.85	0.00008
709	Y75B8A.6	8.82	7.93	1.85	0.000451
710	W08E3.2	8.38	7.49	1.85	0.001012
711	ama-1	9.63	8.75	1.85	0.002405
712	B0457.10	3.83	2.94	1.85	0.004818
713	C31H2.7	5.6	4.71	1.85	0.008262
714	W06H8.5	10.6	9.72	1.85	0.008491
715	C41H7.6	6.95	6.06	1.85	0.009121
716	W06H8.6	10.86	9.97	1.85	0.009134
717	clp-4	7.61	6.72	1.85	0.012586
718	unc-89	8	7.11	1.85	0.013181
719	ctl-2	8.49	7.6	1.85	0.025161
720	sel-8	8.49	7.6	1.85	0.027266
721	T28D6.5	5.16	4.27	1.85	0.048298
722	cas-1	8.91	8.03	1.84	0.001666
723	mul-1	4.33	3.45	1.84	0.001748
724	nra-3	8.43	7.55	1.84	0.002755
725	rhy-1	5.68	4.8	1.84	0.005812
726	Y116A8C.24	2.95	2.07	1.84	0.010157
727	Y50D4B.1	7.94	7.06	1.84	0.017809
728	ZK1053.2	3.09	2.2	1.84	0.018485
729	oac-14	4.77	3.89	1.84	0.027422
730	pad-1	8.51	7.63	1.84	0.028564
731	vab-2	7.4	6.53	1.83	0.000706

732	coh-1	7.73	6.85	1.83	0.001838
733	pgl-3	8.51	7.64	1.83	0.004517
734	Y51F10.3	8.81	7.94	1.83	0.00528
735	Y46H3C.7	4.36	3.49	1.83	0.00544
736	set-2	7.66	6.78	1.83	0.006256
737	plep-1	2.68	1.81	1.83	0.008558
738	eef-1A.1	9.82	8.95	1.83	0.009564
739	col-157	5.58	4.7	1.83	0.010215
740	ZK1067.2	8.06	7.19	1.83	0.016164
741	K08A2.2	4.27	3.4	1.83	0.016422
742	clh-4	5.45	4.58	1.83	0.017163
743	W01H2.2	4.04	3.17	1.83	0.018888
744	R01E6.10	3.64	2.77	1.83	0.025526
745	yop-1	10.45	9.59	1.83	0.02677
746	H37A05.6	3.95	3.08	1.83	0.027984
747	ZK262.3	3.63	2.76	1.83	0.028395
748	pif-1	7.04	6.16	1.83	0.031091
749	tatn-1	9.46	8.59	1.83	0.034166
750	pst-1	7.94	7.07	1.83	0.038143
751	hlh-30	9.3	8.44	1.82	0.000173
752	trx-3	9.23	8.37	1.82	0.000583
753	acdh-7	7.95	7.09	1.82	0.003506
754	din-1	8.21	7.34	1.82	0.003636
755	cyd-1	7.45	6.59	1.82	0.00425
756	ZK131.11	7.46	6.6	1.82	0.004738
757	unc-33	7.3	6.43	1.82	0.007409
758	T28B11.9	3.77	2.9	1.82	0.007867
759	B0205.13	4.2	3.34	1.82	0.009164
760	F11E6.3	6.28	5.42	1.82	0.010385
761	R01H10.7	7.34	6.48	1.82	0.01299
762	Y40B1A.2	6.31	5.45	1.82	0.017511
763	ssl-1	9.21	8.35	1.82	0.01948
764	F46E10.14	4.78	3.92	1.82	0.025359
765	W08E12.5	7.51	6.65	1.82	0.026245
766	mcd-1	7.65	6.79	1.82	0.027151

767	M01B2.8	2.41	1.55	1.82	0.031142
768	ugt-12	4.83	3.98	1.81	0.002767
769	eat-2	4.41	3.56	1.81	0.004215
770	vab-1	9.26	8.4	1.81	0.005028
771	W05F2.4	7.6	6.74	1.81	0.005894
772	dot-1.3	2.44	1.59	1.81	0.00991
773	F13H8.5	6.76	5.9	1.81	0.010615
774	Y69A2AR.31	5.98	5.12	1.81	0.012028
775	F54D8.6	7.29	6.43	1.81	0.014699
776	cnp-3	7.94	7.08	1.81	0.022985
777	Y34D9A.7	7.12	6.27	1.81	0.024883
778	Y92H12A.2	7.78	6.93	1.81	0.028078
779	Y48E1C.1	6.69	5.84	1.81	0.035756
780	C34E11.15	8.03	7.18	1.81	0.043442
781		4.97	4.11	1.81	0.049123
782	ZK354.7	4.87	4.02	1.81	0.049515
783	hpk-1	9.31	8.46	1.8	0.000134
784	H37A05.4	6.46	5.62	1.8	0.000172
785	npp-11	8.04	7.19	1.8	0.000177
786	his-24	9.68	8.83	1.8	0.000299
787	lgx-1	6.55	5.71	1.8	0.000405
788	plx-1	7.91	7.06	1.8	0.001828
789	C34F11.5	3.93	3.08	1.8	0.002867
790	Y39B6A.77	2.75	1.9	1.8	0.003145
791	mir-58.1	6.24	5.39	1.8	0.007507
792	dnj-19	9.51	8.67	1.8	0.007697
793	dlk-1	7.97	7.12	1.8	0.00944
794	C07A12.2	7.55	6.7	1.8	0.01019
795	C24A8.6	8.19	7.34	1.8	0.014899
796	F26H11.4	5.05	4.2	1.8	0.014949
797	mth-2	5.18	4.33	1.8	0.015097
798	C28C12.4	3.34	2.49	1.8	0.016026
799	E01G6.9	4.41	3.56	1.8	0.017436
800	nhl-2	9.98	9.13	1.8	0.017825
801	attf-6	8.01	7.16	1.8	0.026751

802	T04C9.2	5.01	4.16	1.8	0.027015
803	fbxb-71	3.49	2.64	1.8	0.031114
804	F13H6.13	5.35	4.5	1.8	0.034547
805	spr-5	7.69	6.84	1.8	0.045911
806	tax-6	10.04	9.19	1.8	0.047967
807	hsp-110	9.7	8.86	1.8	0.049489
808	copb-2	9.37	8.53	1.79	0.001285
809	catp-3	5.85	5.01	1.79	0.002917
810	lin-40	8.31	7.47	1.79	0.005585
811	K02A4.15	2.65	1.81	1.79	0.007176
812	droe-4	8.2	7.36	1.79	0.007341
813	clec-73	4.17	3.33	1.79	0.010206
814	Y42H9B.7	4.06	3.23	1.79	0.010906
815	F54D12.4	4.19	3.35	1.79	0.013276
816	kcnl-1	5.06	4.22	1.79	0.0187
817	T15D6.10	3.84	3	1.79	0.021093
818	C05D12.11	4.24	3.41	1.79	0.026394
819	T04C4.1	9.37	8.53	1.79	0.031101
820	inft-2	7.54	6.7	1.79	0.037554
821	dct-17	4.2	3.37	1.78	0.000177
822	nep-17	10.21	9.38	1.78	0.006587
823	cog-1	6.94	6.11	1.78	0.009005
824	B0205.10	4.21	3.37	1.78	0.013892
825	K08B12.6	3.84	3.01	1.78	0.021317
826	F13D11.11	2.84	2	1.78	0.028292
827	R02F11.2	7.26	6.42	1.78	0.035575
828	Y56A3A.18	8.34	7.52	1.78	0.036384
829	clec-24	4.43	3.59	1.78	0.043183
830		2.34	1.51	1.78	0.049105
831	cdc-25.2	8.25	7.43	1.77	0.000793
832	F26A10.22	4.18	3.36	1.77	0.002278
833	glo-3	4.5	3.68	1.77	0.002763
834	kin-1	7.6	6.78	1.77	0.006026
835	spk-1	9.3	8.48	1.77	0.009478
836	C09B9.4	4.5	3.67	1.77	0.009955

837	Y105E8A.25	8.52	7.7	1.77	0.010712
838	grl-16	7.84	7.02	1.77	0.013443
839	sur-2	8.4	7.58	1.77	0.014627
840	F49E2.5	9.18	8.36	1.77	0.019187
841	tre-5	7.18	6.35	1.77	0.025273
842	ZK180.18	3.15	2.33	1.77	0.037025
843	T22E5.11	3.02	2.2	1.77	0.047839
844	Y106G6A.9	4.14	3.32	1.76	0.000095
845	F16B12.6	7.08	6.27	1.76	0.000161
846	F13B9.1	8.9	8.08	1.76	0.000216
847	unc-71	8.38	7.57	1.76	0.000455
848	M04B2.10	5.55	4.73	1.76	0.002168
849	col-49	3.14	2.32	1.76	0.002239
850	C23H4.6	5.05	4.23	1.76	0.002474
851	dyn-1	8.26	7.44	1.76	0.003885
852	mnk-1	10.88	10.06	1.76	0.00526
853	mpz-1	7.21	6.39	1.76	0.008955
854	F57F4.7	3.47	2.66	1.76	0.009675
855	C09F9.8	3.31	2.5	1.76	0.011865
856	laat-1	9.74	8.93	1.76	0.013304
857	arrd-9	4.31	3.49	1.76	0.013698
858	W09G10.8	3.18	2.36	1.76	0.015433
859	M04G7.1	7	6.18	1.76	0.018651
860	Y39B6A.42	9.2	8.39	1.76	0.018925
861	C08E8.3	2.77	1.96	1.76	0.022973
862	T04H1.2	9.62	8.8	1.76	0.026208
863	W08F4.3	9.6	8.78	1.76	0.028036
864	F22G12.4	6.68	5.87	1.76	0.028328
865	cls-2	8.38	7.56	1.76	0.03334
866	Y54G2A.11	9.34	8.53	1.76	0.036104
867	Y48A6B.10	8.92	8.12	1.75	0.004531
868	T24E12.10	4.19	3.38	1.75	0.011901
869	kel-1	5.49	4.68	1.75	0.01484
870	tbc-17	7.15	6.34	1.75	0.01761
871	pac-1	8.32	7.51	1.75	0.027633

872	C44E12.5	2.2	1.39	1.75	0.028042
873	daf-16	10.1	9.29	1.75	0.028767
874	Y47H10A.5	6.42	5.62	1.75	0.037571
875	hsp-16.1	8.88	8.07	1.75	0.037705
876	xpo-1	10.29	9.48	1.75	0.044208
877	adss-1	9.79	8.98	1.75	0.045658
878	unc-73	7.71	6.92	1.74	0.000482
879	C23H3.11	2.3	1.5	1.74	0.002521
880	C52B9.8	7.24	6.45	1.74	0.003512
881	Y37A1B.17	7.32	6.53	1.74	0.00461
882	ZK1127.6	4.21	3.41	1.74	0.009473
883	clec-265	5.21	4.41	1.74	0.012848
884	pqn-80	7.62	6.82	1.74	0.025309
885	ins-12	4.27	3.47	1.74	0.029762
886	K12D12.5	6.39	5.59	1.74	0.03854
887	eif-3.B	9.12	8.32	1.74	0.039076
888		11.11	10.31	1.74	0.046206
889	dgn-1	8.48	7.69	1.73	0.00083
890	tep-1	7.94	7.15	1.73	0.001222
891	nsy-1	8.61	7.82	1.73	0.001434
892	egl-30	10.76	9.98	1.73	0.001558
893		8.42	7.62	1.73	0.007034
894	F31E8.7	5.23	4.43	1.73	0.007647
895	Y55B1BR.2	6.39	5.6	1.73	0.009501
896	R08C7.5	2.87	2.08	1.73	0.010266
897	spch-2	5.93	5.14	1.73	0.011475
898	C30F2.2	3.22	2.42	1.73	0.011939
899	rgs-7	7.22	6.42	1.73	0.01244
900	F13D11.14	3.95	3.15	1.73	0.019243
901	M01B12.4	8	7.21	1.73	0.026658
902	gsp-3	5.64	4.85	1.73	0.028712
903		4.03	3.24	1.73	0.028974
904	K04D7.14	2.41	1.62	1.73	0.045627
905	ugt-16	3.17	2.37	1.73	0.046505
906	enu-3.4	7.1	6.31	1.73	0.04728

907	Y48G1C.10	7.08	6.29	1.73	0.047732
908	H08J11.2	9.26	8.48	1.72	0.001464
909	M03E7.4	5.31	4.53	1.72	0.007017
910	smd-1	7.12	6.34	1.72	0.007498
911	hrp-2	9.64	8.85	1.72	0.007615
912	klp-15	5.2	4.42	1.72	0.009889
913	vit-4	3.61	2.83	1.72	0.013262
914	Y48G1C.8	8.2	7.42	1.72	0.013799
915	T25G12.11	5.29	4.5	1.72	0.01744
916	meg-3	6.45	5.67	1.72	0.017612
917	ftt-2	11.48	10.7	1.72	0.020491
918	Y43F8B.23	3.65	2.87	1.72	0.035247
919	gap-3	8.63	7.84	1.72	0.041411
920	ccch-1	8.28	7.5	1.72	0.046566
921	T09B4.5	9.97	9.2	1.71	0.000564
922	nhr-41	8.04	7.27	1.71	0.000599
923	B0513.4	11.04	10.27	1.71	0.004432
924	T15D6.1	1.99	1.22	1.71	0.011206
925	feh-1	6.45	5.68	1.71	0.011969
926		2.88	2.11	1.71	0.015458
927	nkcc-1	8.28	7.51	1.71	0.015857
928	C36E6.1	7.55	6.77	1.71	0.018693
929	F58F12.3	2.96	2.18	1.71	0.022581
930	R02E12.10	5.15	4.38	1.71	0.023131
931	Y60A3A.32	2.4	1.63	1.71	0.023299
932	R119.5	6.77	5.99	1.71	0.024941
933	C04F6.8	3.42	2.65	1.71	0.027931
934	lin-1	6.27	5.5	1.71	0.029028
935	C14A4.8	2.95	2.17	1.71	0.033571
936	F14B6.2	5.54	4.76	1.71	0.0353
937	Y17G7B.10	8.27	7.49	1.71	0.037816
938	F53B6.5	2.8	2.03	1.71	0.047114
939	T15B12.2	3.14	2.36	1.71	0.048963
940	afd-1	9.16	8.4	1.7	0.000686
941	F13H6.15	3.36	2.59	1.7	0.001611

942	aat-3	7.71	6.95	1.7	0.002733
943	cpl-1	11.14	10.38	1.7	0.0029
944	Y45F10D.2	3.1	2.34	1.7	0.006306
945	T22F7.1	6.15	5.38	1.7	0.006419
946	F47G6.3	3.15	2.38	1.7	0.00658
947	laf-1	8.32	7.55	1.7	0.006844
948	F54A3.2	7.49	6.72	1.7	0.0085
949	sop-3	7.58	6.81	1.7	0.008937
950	W03C9.1	3.92	3.16	1.7	0.00948
951	R05D7.3	4.04	3.28	1.7	0.010739
952	C49C3.9	7.01	6.24	1.7	0.013181
953	nfya-1	7.26	6.49	1.7	0.013215
954	F41F3.3	8.05	7.28	1.7	0.013537
955	F13H6.8	4.87	4.1	1.7	0.013918
956	lst-3	8.78	8.02	1.7	0.015579
957	gei-8	7.6	6.84	1.7	0.017206
958	F28A12.8	5.04	4.27	1.7	0.018751
959	F19B10.1	5.71	4.94	1.7	0.021062
960	ZK287.12	3.59	2.82	1.7	0.021481
961	lin-36	9.23	8.46	1.7	0.025875
962	ddx-35	6.87	6.11	1.7	0.027026
963	F13B12.6	8.93	8.16	1.7	0.028514
964	C10H11.11	6.28	5.52	1.7	0.0324
965	Y69A2AR.19	3.51	2.75	1.7	0.037557
966	Y67D8A.2	7.69	6.93	1.7	0.049042
967	Y32G9B.1	3.97	3.21	1.69	0.000439
968	myrf-1	7.27	6.52	1.69	0.001133
969	C06B8.14	3.23	2.47	1.69	0.001481
970	C46F11.6	7.8	7.04	1.69	0.00186
971	T28B8.1	9.1	8.34	1.69	0.003715
972	fox-1	7.69	6.94	1.69	0.004373
973	pqn-35	6.65	5.9	1.69	0.005337
974	T24B8.17	4.12	3.36	1.69	0.011571
975	frm-8	6.1	5.34	1.69	0.012391
976	nhr-48	7.33	6.57	1.69	0.013904

977	sem-4	7.5	6.74	1.69	0.016195
978	F56A11.9	4.05	3.29	1.69	0.031786
979	F40E10.5	6.07	5.31	1.69	0.034356
980	npp-3	9.15	8.39	1.69	0.03508
981	Y51A2D.13	7.07	6.31	1.69	0.048127
982	R06F6.7	8.04	7.29	1.68	0.000896
983	2RSSE.1	8.47	7.72	1.68	0.000899
984	C10C5.3	3.98	3.23	1.68	0.001332
985	Y66D12A.24	5.37	4.62	1.68	0.001998
986	ncl-1	9.94	9.19	1.68	0.002289
987		5.29	4.54	1.68	0.003705
988	F46C3.7	7.14	6.4	1.68	0.00413
989	lin-59	7.82	7.07	1.68	0.004282
990	cgef-1	7.77	7.03	1.68	0.007508
991	C16D6.1	5.43	4.68	1.68	0.009158
992	C33A11.2	7.47	6.73	1.68	0.010777
993	xpc-1	8.7	7.95	1.68	0.013973
994	W10G6.1	2.39	1.64	1.68	0.015902
995	ced-6	8.26	7.52	1.68	0.017202
996	M02B1.3	10.56	9.81	1.68	0.017698
997	lem-2	7.9	7.16	1.68	0.021417
998	F56E10.1	6.99	6.24	1.68	0.027935
999	F46B3.1	2.64	1.89	1.68	0.035104
1000	Y39G10AR.16	5.08	4.33	1.68	0.043509
1001	F56C9.10	9.51	8.76	1.68	0.044094
1002	H09F14.1	6.24	5.5	1.68	0.04713
1003	Y73C8B.1	5.77	5.03	1.67	0.000352
1004	bed-2	7.61	6.87	1.67	0.001254
1005	K08A8.18	3.75	3.01	1.67	0.001438
1006	arf-6	9.01	8.27	1.67	0.003238
1007	ceh-14	6.23	5.49	1.67	0.004382
1008	fbxa-71	2.76	2.02	1.67	0.004614
1009	frm-7	9.92	9.18	1.67	0.005643
1010	acl-8	7.63	6.89	1.67	0.005909
1011	ptrn-1	7.35	6.6	1.67	0.007779

1012	ipla-2	7.97	7.23	1.67	0.008605
1013	pcf-11	9.23	8.49	1.67	0.01212
1014	F16A11.5	3.51	2.76	1.67	0.013347
1015	gck-3	8.28	7.55	1.67	0.019311
1016		6.84	6.1	1.67	0.023693
1017	clec-41	4.65	3.91	1.67	0.028313
1018	W09B7.1	4.18	3.44	1.67	0.03007
1019	W09B7.1	4.18	3.44	1.67	0.03007
1020	B0511.12	8.35	7.61	1.67	0.032535
1021	cdc-48.1	10.41	9.67	1.67	0.037478
1022	men-1	8.31	7.57	1.67	0.038116
1023	ttr-29	6.13	5.38	1.67	0.042197
1024	str-5	1.71	0.97	1.67	0.044701
1025	Y56A3A.2	8.09	7.35	1.67	0.047886
1026	srr-4	6.46	5.72	1.66	0.000891
1027	C13G3.1	7.7	6.97	1.66	0.002296
1028	T11F9.12	6.84	6.11	1.66	0.002974
1029	F35B12.3	7.41	6.68	1.66	0.003802
1030	catp-1	6.75	6.02	1.66	0.004601
1031	F47G4.4	6.8	6.06	1.66	0.00553
1032	nhl-1	8.03	7.29	1.66	0.005734
1033	F48C1.12	6.44	5.71	1.66	0.005812
1034	Y37E11AL.6	6.99	6.26	1.66	0.00822
1035	act-5	7.62	6.88	1.66	0.009112
1036		7.6	6.87	1.66	0.009804
1037	K10C2.1	8.15	7.42	1.66	0.011334
1038	pqe-1	8.99	8.26	1.66	0.012232
1039	W02B12.12	4.93	4.19	1.66	0.014199
1040	unc-82	7.02	6.29	1.66	0.01433
1041	stau-1	7.02	6.29	1.66	0.015183
1042	cgef-1	5.97	5.24	1.66	0.017472
1043	ref-1	5.32	4.59	1.66	0.019295
1044	F49C12.15	5.14	4.41	1.66	0.028203
1045	F58D2.2	4.1	3.37	1.66	0.035083
1046	hsp-16.1	8.35	7.61	1.66	0.039239

1047	K03H9.13	2.71	1.97	1.66	0.040314
1048	ZK354.3	1.91	1.18	1.66	0.043196
1049	rhgf-2	7.55	6.83	1.65	0.000117
1050	R04B3.7	4.54	3.82	1.65	0.000164
1051	Y105C5B.3	2.09	1.37	1.65	0.000905
1052	T04F8.9	5.01	4.29	1.65	0.001814
1053	F20B10.3	7.12	6.4	1.65	0.003385
1054	Y53F4B.12	4.7	3.98	1.65	0.003803
1055	F44D12.8	3.8	3.08	1.65	0.009454
1056	T24D5.5	2.76	2.04	1.65	0.010637
1057	tlk-1	9.75	9.02	1.65	0.01142
1058	Y53F4B.18	8.81	8.09	1.65	0.013201
1059	F10D2.8	2.72	2	1.65	0.021683
1060	K08B5.3	3.5	2.77	1.65	0.024874
1061	egl-8	8.44	7.71	1.65	0.027863
1062	col-97	5.7	4.98	1.65	0.035719
1063	C13B4.1	7.4	6.68	1.65	0.038527
1064	F38B6.18	4.06	3.33	1.65	0.041648
1065	W09D12.5	3.44	2.72	1.65	0.044376
1066	W07G4.12	3.48	2.76	1.65	0.044686
1067	Y24D9A.7	3.23	2.51	1.65	0.04721
1068	R13F6.14	3.24	2.53	1.64	0.000573
1069	frm-5.2	7.72	7.01	1.64	0.000625
1070	daf-7	5.1	4.39	1.64	0.001032
1071	Y110A2AL.3	8.01	7.3	1.64	0.002769
1072	R10F2.4	3.84	3.13	1.64	0.003014
1073	E01G6.1	5.45	4.74	1.64	0.007224
1074	Y75B8A.24	7.43	6.72	1.64	0.008069
1075	ZK154.5	6.96	6.25	1.64	0.00913
1076	pole-1	7.86	7.15	1.64	0.009685
1077	haly-1	9.61	8.89	1.64	0.011029
1078	ZK354.6	3.19	2.47	1.64	0.012591
1079	scl-3	7.31	6.6	1.64	0.016741
1080	sri-31	2.73	2.01	1.64	0.019185
1081	F35A5.4	4.55	3.83	1.64	0.019858

1082	nspb-6	4.13	3.41	1.64	0.021665
1083	sym-4	7.51	6.8	1.64	0.026427
1084	klu-1	5.62	4.91	1.64	0.028129
1085	B0336.3	8.85	8.14	1.64	0.028232
1086	ifet-1	10.4	9.69	1.64	0.028907
1087	ets-6	7.74	7.03	1.64	0.030609
1088	csb-1	6.29	5.57	1.64	0.033614
1089	C27F2.8	9	8.29	1.64	0.040279
1090	pxf-1	8.84	8.13	1.64	0.043019
1091	lin-10	7.53	6.82	1.63	0.000521
1092	hsp-4	8.88	8.17	1.63	0.001352
1093	let-2	8.82	8.12	1.63	0.002075
1094	Y105E8A.36	9.02	8.31	1.63	0.003479
1095	F25B3.5	4.78	4.08	1.63	0.005629
1096	fkx-2	5.09	4.39	1.63	0.005817
1097	rho-1	11.34	10.64	1.63	0.009444
1098	gfi-1	5.09	4.38	1.63	0.010146
1099	C16E9.16	4.57	3.87	1.63	0.017279
1100	srw-10	2.97	2.27	1.63	0.017651
1101	pdk-1	7.52	6.82	1.63	0.019455
1102	gln-2	3.65	2.94	1.63	0.020184
1103	Y62F5A.10	4.95	4.24	1.63	0.021854
1104	fer-1	3.15	2.44	1.63	0.028511
1105	Y59A8B.24	3.29	2.59	1.63	0.035329
1106	C02B10.6	5.62	4.92	1.63	0.04014
1107	Y76A2B.8	3.77	3.07	1.63	0.040936
1108	B0285.14	2.79	2.09	1.63	0.04732
1109	C29E6.10	2.29	1.59	1.63	0.048087
1110	C45B2.18	2.42	1.72	1.63	0.049797
1111	F28B4.3	7.22	6.52	1.62	0.000178
1112	eat-17	8.04	7.34	1.62	0.000764
1113	T25B9.6	4.37	3.68	1.62	0.001244
1114	zfh-2	7.81	7.11	1.62	0.001326
1115	alg-1	9.97	9.27	1.62	0.001754
1116	cst-2	5.94	5.25	1.62	0.00207

1117	let-526	10.21	9.52	1.62	0.005017
1118	glit-1	6.24	5.54	1.62	0.006133
1119	ddx-17	8.59	7.9	1.62	0.007513
1120	ham-1	7.37	6.67	1.62	0.009592
1121	eel-1	9.45	8.75	1.62	0.011857
1122	F35C11.3	3.47	2.77	1.62	0.013024
1123	tbc-10	6.95	6.25	1.62	0.015128
1124	daf-19	7.67	6.98	1.62	0.017538
1125	mod-5	6.3	5.61	1.62	0.018439
1126	C03A7.2	3.4	2.71	1.62	0.019358
1127	lin-8	5.55	4.85	1.62	0.025856
1128	F33E11.2	6.37	5.68	1.62	0.030923
1129	C06C3.7	3.14	2.44	1.62	0.034064
1130	K05B2.2	7.99	7.29	1.62	0.036271
1131	spn-4	10.66	9.97	1.62	0.041309
1132	Y6E2A.10	2.78	2.09	1.62	0.041917
1133	Y95B8A.8	8.54	7.84	1.62	0.043383
1134	F54F12.3	4.31	3.61	1.62	0.04852
1135	sti-1	8.91	8.23	1.61	0.000621
1136	unc-10	7.04	6.36	1.61	0.001322
1137	fbxa-168	3.52	2.83	1.61	0.002426
1138	let-711	9.84	9.15	1.61	0.003033
1139	sos-1	8.83	8.15	1.61	0.003522
1140	cyk-1	8.53	7.84	1.61	0.003974
1141	hgap-1	7.74	7.05	1.61	0.004161
1142	sec-61	8.11	7.42	1.61	0.004631
1143	zyx-1	8.75	8.07	1.61	0.007448
1144	R07G3.10	3.75	3.06	1.61	0.008087
1145	gei-6	8.08	7.4	1.61	0.011556
1146	grl-6	4.07	3.38	1.61	0.017903
1147	T23E1.5	4.59	3.9	1.61	0.018006
1148	zag-1	7.32	6.63	1.61	0.018243
1149	R04E5.9	8.07	7.38	1.61	0.020875
1150	toh-1	6.54	5.85	1.61	0.021307
1151	vig-1	11.07	10.38	1.61	0.021349

1152	C52E12.1	8.23	7.54	1.61	0.024155
1153	BE10.7	3.16	2.47	1.61	0.027223
1154	C18D1.12	3.72	3.04	1.61	0.027232
1155	Y43F8A.2	4.4	3.71	1.61	0.028643
1156	gcy-21	2.72	2.03	1.61	0.02963
1157	vps-15	8.21	7.51	1.61	0.029909
1158	CE7X_3.3	8.75	8.06	1.61	0.030831
1159		5.69	5	1.61	0.03447
1160	Y38C1BA.1	4.35	3.66	1.61	0.043738
1161	egl-18	8.52	7.84	1.6	0.000035
1162	acly-1	7.59	6.91	1.6	0.000048
1163	C03F11.2	5.7	5.02	1.6	0.000195
1164	Iron-11	7.99	7.31	1.6	0.000608
1165	nep-26	7.23	6.55	1.6	0.000706
1166	eat-17	7.18	6.5	1.6	0.000934
1167	slc-17.8	4.29	3.61	1.6	0.001432
1168	W09G12.7	5.37	4.69	1.6	0.004364
1169	K08B4.43	3.06	2.38	1.6	0.005502
1170	ifd-2	7.42	6.75	1.6	0.00788
1171	hosl-1	6.72	6.04	1.6	0.009132
1172	F16F9.9	2.08	1.39	1.6	0.009551
1173	car-1	10.89	10.21	1.6	0.01034
1174	Y77E11A.7	8.76	8.08	1.6	0.014772
1175	best-11	2.22	1.55	1.6	0.016397
1176	T28B11.3	3.88	3.2	1.6	0.016585
1177	unc-26	7.04	6.37	1.6	0.01933
1178	trap-1	10.36	9.69	1.6	0.025142
1179	Y41D4A.4	9.14	8.46	1.6	0.025464
1180	let-765	9.18	8.5	1.6	0.03051
1181	acs-10	3.62	2.94	1.6	0.030663
1182	sfxn-1.2	2.82	2.14	1.6	0.031918
1183	T08A11.1	7.28	6.6	1.6	0.03839
1184	twk-29	4.64	3.96	1.6	0.040929
1185	jac-1	6.32	5.64	1.59	0.000352
1186	hmr-1	7.39	6.73	1.59	0.000487

1187	F41G3.10	8.77	8.11	1.59	0.001399
1188	sem-2	7.67	7.01	1.59	0.001455
1189	mig-1	7.04	6.37	1.59	0.001719
1190	pqn-88	4.93	4.27	1.59	0.001738
1191	myrf-2	8.36	7.7	1.59	0.002054
1192	T26H5.10	3.5	2.83	1.59	0.002702
1193	set-12	4.93	4.27	1.59	0.006488
1194	vit-6	12.03	11.36	1.59	0.007918
1195	sec-24.2	9.27	8.6	1.59	0.011334
1196	ubq-1	10.1	9.43	1.59	0.014777
1197	nep-2	7.49	6.82	1.59	0.019119
1198	T10E9.3	5.6	4.93	1.59	0.01992
1199	nas-38	4.4	3.73	1.59	0.021118
1200	sqd-1	11.57	10.91	1.59	0.024202
1201	M151.4	2.61	1.94	1.59	0.025871
1202	ceh-62	5.6	4.93	1.59	0.028375
1203	B0457.16	2.8	2.13	1.59	0.030255
1204	ncx-9	1.97	1.3	1.59	0.033135
1205	ppgn-1	6.92	6.24	1.59	0.037198
1206	lap-2	10.7	10.03	1.59	0.041315
1207	scrm-6	3.8	3.13	1.59	0.042774
1208	oxi-1	7.07	6.41	1.59	0.045978
1209		2.87	2.2	1.59	0.048586
1210	Y54F10BM.1	8.81	8.15	1.58	0.000383
1211	ipla-4	3.67	3.01	1.58	0.002526
1212	Y49F6B.15	2.98	2.32	1.58	0.004416
1213	mml-1	8.23	7.57	1.58	0.00541
1214	C05B5.4	5.01	4.35	1.58	0.005486
1215	phat-4	4.7	4.03	1.58	0.005791
1216	ketn-1	8.01	7.36	1.58	0.006267
1217	rin-1	8.34	7.68	1.58	0.007134
1218	R02F2.5	4.24	3.57	1.58	0.008507
1219	F57C7.8	4.95	4.3	1.58	0.010159
1220	C04A11.2	5.52	4.86	1.58	0.011144
1221	nas-15	4.49	3.83	1.58	0.012129

1222	hpo-13	6.88	6.22	1.58	0.018911
1223	M195.2	6.71	6.05	1.58	0.024118
1224	clip-1	8	7.34	1.58	0.025563
1225	pqn-85	8.36	7.7	1.58	0.027732
1226		10.31	9.65	1.58	0.02996
1227	K10D6.24	4.65	4	1.58	0.036397
1228	R11B5.3	4.2	3.54	1.58	0.039609
1229	tbc-14	8.31	7.66	1.58	0.040386
1230	Y57G11C.5	3.94	3.28	1.58	0.049605
1231	ZK1053.4	6.26	5.61	1.57	0.001433
1232	R05D3.5	4.62	3.97	1.57	0.001593
1233	dab-1	8.14	7.49	1.57	0.003166
1234		4.02	3.36	1.57	0.006168
1235	H10E21.5	6.66	6.01	1.57	0.010178
1236	B0457.6	6.15	5.51	1.57	0.011576
1237	lem-4	6.35	5.69	1.57	0.014087
1238	C17D12.12	3.14	2.49	1.57	0.015292
1239	C14C6.2	4.96	4.31	1.57	0.017094
1240	col-107	9.08	8.43	1.57	0.021841
1241	ZC506.8	2.41	1.75	1.57	0.023859
1242	F53B3.3	6.1	5.44	1.57	0.025312
1243	obr-1	6.97	6.32	1.57	0.030424
1244	F40H3.15	2.29	1.64	1.57	0.031334
1245	W04A8.6	7.99	7.34	1.57	0.037527
1246	shc-1	5.8	5.15	1.57	0.038061
1247	B0198.7	3.29	2.64	1.57	0.042405
1248	lec-1	9.39	8.74	1.56	0.000535
1249	hpo-28	5.57	4.94	1.56	0.000906
1250	dpy-21	6.49	5.85	1.56	0.001887
1251	F01D5.2	2.65	2	1.56	0.002009
1252	die-1	7.68	7.04	1.56	0.002428
1253	K02H8.4	4.76	4.12	1.56	0.002712
1254	K01A6.9	3.84	3.2	1.56	0.003425
1255	BE10.1	3.66	3.02	1.56	0.003437
1256	eat-20	6.1	5.46	1.56	0.00443

1257	gfi-3	6.56	5.92	1.56	0.005547
1258	atg-9	8.74	8.1	1.56	0.00624
1259	act-4	6.88	6.24	1.56	0.007136
1260	ptr-21	7.39	6.75	1.56	0.008511
1261	ZC416.6	7.67	7.03	1.56	0.009766
1262	T01D3.3	5.6	4.96	1.56	0.011184
1263	ZK622.4	6.94	6.3	1.56	0.013306
1264	cey-1	11.54	10.9	1.56	0.016998
1265	Y110A2AL.9	7.34	6.7	1.56	0.019266
1266	C33C12.10	6.34	5.69	1.56	0.021444
1267	F15D3.6	8.96	8.32	1.56	0.032765
1268	mig-38	9.61	8.96	1.56	0.033657
1269	unc-30	5.72	5.08	1.56	0.036204
1270	pqn-29	4.33	3.68	1.56	0.036724
1271		2.46	1.81	1.56	0.036814
1272	D1007.22	3.53	2.88	1.56	0.038336
1273	F21F3.6	11.32	10.68	1.56	0.049057
1274	acs-1	8.25	7.63	1.55	0.00003
1275	pqn-65	7.87	7.23	1.55	0.000053
1276	set-16	8.27	7.64	1.55	0.000582
1277	Y41C4A.29	7.33	6.7	1.55	0.000838
1278	fust-1	7.21	6.58	1.55	0.001986
1279	pat-12	7.5	6.87	1.55	0.002072
1280	aakg-1	9.19	8.56	1.55	0.003005
1281	Y39G8C.9	2.31	1.68	1.55	0.006178
1282	ceh-45	5.67	5.03	1.55	0.007954
1283	F53B6.4	4.79	4.15	1.55	0.008651
1284	C27B7.6	4.15	3.51	1.55	0.009229
1285	nucb-1	7.43	6.8	1.55	0.01298
1286	toe-4	8.98	8.35	1.55	0.014974
1287	T07D10.11	1.97	1.34	1.55	0.016911
1288	E03H4.4	2.44	1.81	1.55	0.019095
1289	olrn-1	7.15	6.52	1.55	0.020753
1290	T14F9.18	3.51	2.88	1.55	0.021982
1291	Y39H10A.4	5.07	4.44	1.55	0.032287

1292	ccr-4	9.23	8.61	1.55	0.033485
1293	prg-2	7.98	7.35	1.55	0.036542
1294	cut-2	4.26	3.63	1.55	0.047642
1295	pup-2	10.81	10.18	1.55	0.047728
1296	egrh-1	8.39	7.76	1.55	0.048775
1297	pes-7	6.95	6.32	1.55	0.049013
1298	F20D6.8	5.83	5.2	1.55	0.04974
1299	K10D11.6	4.35	3.73	1.54	0.00006
1300	kin-2	8.83	8.21	1.54	0.000072
1301	F38E9.5	8.56	7.93	1.54	0.001175
1302	M117.4	3.63	3.01	1.54	0.002181
1303	csnk-1	9.69	9.07	1.54	0.002481
1304	F09G8.7	8.66	8.04	1.54	0.003027
1305	Y43F4A.4	1.62	1	1.54	0.005061
1306	npr-34	3.67	3.05	1.54	0.006552
1307	F35H8.11	3.2	2.58	1.54	0.006598
1308	Y53C10A.5	7.36	6.73	1.54	0.007227
1309	ifa-1	6.65	6.04	1.54	0.007385
1310	Y52B11A.19	6.99	6.38	1.54	0.011146
1311	ced-1	8.17	7.54	1.54	0.011648
1312	B0222.1	4.17	3.55	1.54	0.012717
1313	C41D11.3	7.54	6.91	1.54	0.016574
1314	peb-1	7.43	6.81	1.54	0.018122
1315	hpo-11	9.41	8.79	1.54	0.020529
1316	fbxa-202	1.78	1.16	1.54	0.020808
1317	npr-15	4.65	4.02	1.54	0.02257
1318	sax-3	7.66	7.04	1.54	0.026415
1319	kcnl-4	3.28	2.65	1.54	0.026989
1320	tank-1	7.11	6.49	1.54	0.029869
1321	Y22F5A.8	3.4	2.78	1.54	0.030444
1322	F26A10.2	8.1	7.47	1.54	0.031443
1323	T09F5.12	6.96	6.33	1.54	0.039179
1324	C29F5.3	2.91	2.29	1.54	0.041332
1325	Y43F8C.6	6.59	5.97	1.54	0.049648
1326	eps-8	8.52	7.9	1.53	0.000208

1327	scd-1	8.57	7.96	1.53	0.000261
1328	Y71H2AM.15	6.75	6.13	1.53	0.00042
1329	klp-20	5.8	5.19	1.53	0.001931
1330	tmc-1	5.95	5.34	1.53	0.002545
1331	fbxa-155	2.81	2.2	1.53	0.01082
1332	R07E3.4	4.99	4.39	1.53	0.012834
1333	F35A5.1	6.18	5.56	1.53	0.013803
1334	grl-8	5.42	4.8	1.53	0.01548
1335	egl-4	8.08	7.46	1.53	0.0166
1336	osm-3	4.1	3.48	1.53	0.017215
1337	C56G2.15	6.88	6.27	1.53	0.020587
1338	R12B2.9	3.77	3.15	1.53	0.022793
1339	ZK867.6	4.98	4.37	1.53	0.023898
1340	Y71A12B.29	2.82	2.21	1.53	0.030196
1341	C14F11.4	6.89	6.28	1.53	0.032574
1342	C24A11.2	2.62	2.01	1.53	0.03509
1343	sea-1	5.57	4.95	1.53	0.035346
1344	F44E5.14	6.11	5.5	1.53	0.040817
1345	C55A6.14	3.91	3.29	1.53	0.042466
1346	sfa-1	8.51	7.9	1.53	0.045339
1347	btbd-10	9.86	9.25	1.53	0.048218
1348	mig-6	8.01	7.4	1.52	0.00046
1349	dod-6	11.98	11.38	1.52	0.001362
1350	T23B7.3	8.2	7.6	1.52	0.001581
1351	B0403.5	6.45	5.85	1.52	0.002067
1352	W06H8.14	4.45	3.84	1.52	0.002732
1353	vap-1	7.1	6.49	1.52	0.003375
1354	C41G11.9	4.14	3.54	1.52	0.005041
1355	elo-7	2.95	2.35	1.52	0.006461
1356	ced-3	8.83	8.22	1.52	0.00788
1357	piki-1	7.03	6.43	1.52	0.010524
1358	Y105E8A.25	8.99	8.39	1.52	0.011454
1359	ZC123.4	5.79	5.18	1.52	0.011769
1360		3.94	3.34	1.52	0.014655
1361	K02B12.10	1.87	1.26	1.52	0.016699

1362	C05G5.8	2.74	2.13	1.52	0.018951
1363	cht1-1	6.58	5.97	1.52	0.01963
1364	Y71G12B.23	6.38	5.77	1.52	0.022347
1365	T25C12.6	6.11	5.51	1.52	0.025513
1366	C31G12.4	2.56	1.95	1.52	0.030638
1367	bcat-1	10.34	9.73	1.52	0.031981
1368	pbrm-1	9.65	9.05	1.52	0.037369
1369	cdt-1	8.57	7.96	1.52	0.040233
1370	rme-1	8.75	8.15	1.52	0.045055
1371	pxd-1	7.77	7.18	1.51	0.000053
1372	lsy-2	6.66	6.06	1.51	0.00009
1373	W06F12.2	7.69	7.1	1.51	0.000447
1374	apl-1	10.18	9.58	1.51	0.000967
1375	Y73F8A.1161	3.82	3.22	1.51	0.002842
1376	Y39E4B.6	7.81	7.22	1.51	0.002876
1377	nhr-23	7.89	7.29	1.51	0.003885
1378	tln-1	7.77	7.18	1.51	0.004163
1379	F10G8.11	4.57	3.98	1.51	0.005361
1380	W01A11.20	2.59	1.99	1.51	0.005533
1381	ccb-1	8.13	7.54	1.51	0.006601
1382	ptb-1	7	6.41	1.51	0.007569
1383	T28B11.1	10.32	9.72	1.51	0.013757
1384	C44B12.10	2.63	2.03	1.51	0.014093
1385	Y69H2.3	5.83	5.24	1.51	0.015291
1386	bus-19	6.1	5.5	1.51	0.019085
1387	spe-41	4.23	3.64	1.51	0.021017
1388	grl-4	7.17	6.57	1.51	0.022603
1389	dpy-28	7.7	7.1	1.51	0.02293
1390	C01C4.3	7.61	7.01	1.51	0.023765
1391	C07A9.15	4.19	3.6	1.51	0.027493
1392	F22E12.9	3.54	2.94	1.51	0.027553
1393	R106.1	5.41	4.82	1.51	0.027705
1394	col-182	5.19	4.59	1.51	0.03044
1395	W03A5.4	7.82	7.22	1.51	0.031372
1396	xrn-2	6.93	6.33	1.51	0.031466

1397	cgef-1	5.3	4.71	1.51	0.035715
1398	F35D2.16	2.75	2.16	1.51	0.048423

Table S3. The down-regulated differentially expressed genes in nematodes.

Number	Gene Symbol	SiNPs-weight	Control-weight	Fold	ANOVA
		Avg signal (log2)	Avg signal (log2)	Change	p-value
1	C08F11.3	3.16	6.23	-8.39	0.000225
2	C33A12.19	3.91	6.97	-8.37	0.021235
3	mtl-1	7.29	10.29	-7.96	0.002452
4	F40G12.5	2.82	5.72	-7.5	0.003905
5	hsp-12.3	4.41	7.21	-6.95	0.002312
6	F09C8.1	3.19	5.96	-6.81	0.000965
7	clec-61	4.75	7.38	-6.2	0.001077
8	W02D7.11	6.61	9.16	-5.84	0.000719
9	hsp-12.6	8.64	11.16	-5.72	0.000729
10	gba-4	4.88	7.39	-5.67	0.000563
11	F47B8.4	2.99	5.45	-5.51	0.000138
12	fbxa-26	3.32	5.76	-5.44	0.002659
13	C49F5.7	6.08	8.52	-5.43	0.005299
14	cpr-2	7.41	9.69	-4.88	0.000325
15	F21C10.11	8.1	10.38	-4.86	0.002135
16	ZK512.7	4.21	6.46	-4.76	0.000349
17	Y106G6D.5	5.16	7.37	-4.64	0.005399
18	K03H6.2	4.51	6.68	-4.52	0.002681
19	col-179	5.03	7.2	-4.49	0.000009
20	F12A10.1	3.13	5.27	-4.41	0.025319
21	C11E4.7	2.53	4.65	-4.35	0.004754
22	hil-1	7.22	9.33	-4.34	0.000573
23	asp-13	5.78	7.86	-4.24	0.00036
24	nhr-74	3.6	5.67	-4.18	0.01916
25	spp-1	8.19	10.24	-4.14	0.001413
26	ZC395.5	5.42	7.46	-4.11	0.000929
27	F17B5.9	3.46	5.48	-4.06	0.002904
28	F01D5.14	5.65	7.66	-4.05	0.025099
29	Y37D8A.3	4.01	6.02	-4.02	0.003905
30	F43C11.7	7.42	9.4	-3.93	0.000052
31	Y40H7A.10	5.92	7.9	-3.93	0.00054

32	far-5	2.3	4.23	-3.81	0.007661
33	btb-17	3.9	5.83	-3.8	0.00017
34	clcc-76	5.16	7.07	-3.75	0.000436
35	srp-2	5.19	7.07	-3.7	0.008492
36	fipr-13	2.69	4.57	-3.68	0.012539
37	T19B4.9	3.72	5.59	-3.67	0.040634
38	cyp-34A9	5.69	7.55	-3.64	0.00058
39	Y45F10C.2	7.43	9.3	-3.64	0.009918
40	Y51F10.7	8.01	9.86	-3.62	0.000912
41	F08G2.13	4.36	6.21	-3.6	0.045435
42	T11G6.3	3.89	5.7	-3.52	0.00035
43	fbxa-164	2.47	4.28	-3.52	0.001046
44	nspc-10	3.78	5.59	-3.51	0.02122
45	afmd-1	3.06	4.87	-3.5	0.002087
46	nhr-244	2.92	4.73	-3.5	0.019391
47	M163.12	6.59	8.38	-3.46	0.023025
48	asm-2	4.22	6.01	-3.45	0.00009
49	fbxa-6	3.85	5.63	-3.45	0.001083
50	dod-3	3.82	5.61	-3.45	0.0086
51	col-106	9.55	11.33	-3.42	0.000816
52	spp-2	4.74	6.49	-3.37	0.002819
53	F23D12.11	4.92	6.66	-3.34	0.003216
54	F37C12.10	3.3	5.04	-3.34	0.003725
55	K02F3.9	7.79	9.52	-3.32	0.001393
56	col-184	7.74	9.47	-3.31	0.00095
57	F36G9.7	2.23	3.95	-3.3	0.000631
58	C05D2.15	6.57	8.28	-3.27	0.037638
59	ttr-47	6.23	7.93	-3.26	0.003545
60	E02H4.7	5.59	7.28	-3.24	0.00292
61	clcc-172	4.03	5.72	-3.23	0.006255
62	nlp-28	2.9	4.59	-3.23	0.008328
63	Y6E2A.4	3.97	5.66	-3.22	0.001021
64	F54D5.3	8.18	9.87	-3.22	0.001452
65	ceeh-2	3.69	5.38	-3.22	0.028955
66	C18A3.14	6.96	8.65	-3.22	0.035081

67	C24B9.3	6.95	8.63	-3.21	0.00002
68	F26G1.10	2.02	3.7	-3.21	0.002755
69	F59A6.12	4.34	6.02	-3.21	0.015976
70	F16B4.7	5.45	7.13	-3.2	0.011409
71	cpi-1	8.09	9.76	-3.18	0.004077
72	Y43C5A.3	5.96	7.62	-3.17	0.003919
73	dhs-31	4.25	5.91	-3.17	0.015482
74	M60.4	9.04	10.7	-3.16	0.000922
75	clcc-209	6.48	8.13	-3.15	0.002412
76	clcc-209	6.48	8.13	-3.15	0.002412
77	Y23H5B.13	7.18	8.83	-3.14	0.021798
78	Y22D7AR.10	4.94	6.58	-3.1	0.013064
79	F59E11.7	3.11	4.74	-3.09	0.033109
80	R10H10.3	5.55	7.18	-3.08	0.001382
81	F09F7.6	6.91	8.52	-3.05	0.000122
82	F53G12.17	5.84	7.44	-3.03	0.046454
83	pud-2.2	7.75	9.35	-3.02	0.000268
84	pud-2.2	7.75	9.35	-3.02	0.000268
85	ttr-44	7.77	9.36	-3.02	0.00145
86	F30A10.14	2.82	4.41	-3.02	0.008132
87	T12B5.15	7.27	8.86	-3.01	0.022212
88	clcc-51	5.08	6.66	-3	0.000875
89	skr-5	4.18	5.76	-3	0.009607
90	pho-11	8.52	10.1	-2.98	0.001037
91	pud-1.2	8.18	9.75	-2.97	0.000456
92	clcc-145	4	5.57	-2.96	0.002044
93	nspc-16	6.41	7.98	-2.96	0.018339
94	pud-1.2	7.68	9.24	-2.95	0.000381
95	nspc-9	7.22	8.78	-2.95	0.015357
96	col-8	5.4	6.96	-2.94	0.000207
97	cdo-1	4.02	5.57	-2.93	0.000724
98	F36H9.4	5.22	6.77	-2.93	0.002453
99	ZK783.8	2.37	3.92	-2.92	0.00436
100	C11G10.1	4.47	6.02	-2.92	0.033506
101	ttr-42	4.7	6.24	-2.91	0.010869

102	Y22D7AL.15	8.59	10.12	-2.9	0.002592
103	ttr-41	5.83	7.35	-2.89	0.001401
104	C44C1.6	5.38	6.91	-2.89	0.007504
105	spp-17	9.56	11.08	-2.88	0.001892
106	F40A3.2	4.54	6.06	-2.88	0.003414
107	spp-4	3.89	5.41	-2.87	0.001924
108	F14H3.12	5.04	6.56	-2.87	0.004947
109	T22D1.17	2.34	3.86	-2.85	0.024396
110	T19D7.6	4.8	6.31	-2.84	0.002953
111	K07E1.1	7.14	8.65	-2.84	0.019481
112	R07B5.11	2.06	3.56	-2.83	0.016542
113	dhs-7	1.42	2.92	-2.82	0.0053
114	dlhd-1	3.55	5.04	-2.81	0.000175
115	nspc-18	5.96	7.45	-2.81	0.009238
116	K02D10.8	5.23	6.72	-2.8	0.000515
117	far-7	6.42	7.9	-2.8	0.001404
118	ttr-25	6.07	7.55	-2.79	0.006953
119	F32A5.8	5.43	6.92	-2.79	0.012915
120	srp-1	6.35	7.82	-2.78	0.00031
121	poml-3	3.62	5.09	-2.78	0.001532
122	F49E12.10	4.27	5.74	-2.78	0.002234
123	irg-3	5.39	6.87	-2.78	0.003162
124	C54F6.6	4.25	5.72	-2.77	0.03146
125	M163.15	7.35	8.82	-2.77	0.046395
126	F22B7.9	6.21	7.67	-2.76	0.000168
127	col-101	3.32	4.78	-2.76	0.001679
128	D1054.8	3.88	5.34	-2.76	0.001801
129	W10G11.2	5.03	6.5	-2.76	0.014374
130	Y105C5A.8	5.97	7.42	-2.74	0.001562
131	K10G6.9	4.13	5.58	-2.74	0.004564
132	H39E23.2	3.11	4.56	-2.73	0.008891
133	best-14	4.76	6.21	-2.73	0.01284
134	W10G11.3	4.01	5.46	-2.73	0.014001
135	T10C6.15	4.55	5.99	-2.73	0.025086
136	F42F12.4	3.73	5.16	-2.71	0.007037

137	F20D6.5	4.06	5.5	-2.71	0.011871
138	sdz-24	7.27	8.7	-2.7	0.000228
139	ZK1320.3	8.16	9.59	-2.7	0.000892
140	spp-6	5.01	6.43	-2.69	0.00256
141	C15H11.11	4.35	5.77	-2.69	0.002826
142	ZK1320.2	7.45	8.87	-2.68	0.00091
143	tsp-10	4.31	5.73	-2.68	0.006573
144	zig-9	5.34	6.76	-2.66	0.000209
145	D1086.12	6.81	8.22	-2.66	0.001916
146	D2030.12	5.22	6.63	-2.66	0.004234
147	C08F11.12	5.33	6.74	-2.66	0.015314
148	col-80	5.71	7.13	-2.66	0.021037
149	ttr-46	7	8.4	-2.65	0.004623
150	K09C4.1	4.65	6.06	-2.65	0.006501
151	D1086.1	4.01	5.41	-2.64	0.00139
152	lys-4	5.36	6.76	-2.64	0.002254
153	gstk-2	3.24	4.64	-2.64	0.005603
154	cpin-1	3.53	4.93	-2.64	0.010341
155	fbxa-54	5.08	6.48	-2.64	0.020899
156	decr-1.1	3.72	5.12	-2.64	0.02579
157	F36D1.7	3.59	4.99	-2.64	0.039108
158	C08F11.11	8.39	9.79	-2.64	0.045274
159	F13D11.3	5.69	7.09	-2.63	0.000687
160	gta-1	7.6	8.99	-2.63	0.005365
161	C06G3.3	6.54	7.93	-2.63	0.006129
162	pud-4	4	5.4	-2.63	0.007944
163	spp-8	9.2	10.59	-2.62	0.000227
164	F22H10.6	4.02	5.41	-2.62	0.000798
165	fbxa-29	4.15	5.54	-2.62	0.00118
166	nspc-17	6.13	7.52	-2.62	0.016742
167	C23G10.11	7.93	9.32	-2.62	0.017515
168	H09I01.4	5.91	7.3	-2.62	0.043381
169	F53C11.9	3.92	5.31	-2.61	0.003626
170	dhs-14	5.68	7.06	-2.6	0.000428
171	C03G6.17	5.82	7.2	-2.6	0.003272

172	nspc-1	8.17	9.55	-2.6	0.003471
173	Y12A6A.1	4.88	6.26	-2.6	0.004068
174	F09E10.10	4.78	6.16	-2.6	0.010202
175	F21H7.12	3.15	4.53	-2.6	0.013571
176	T04A11.2	3.71	5.08	-2.59	0.001295
177	T04A11.2	3.71	5.08	-2.59	0.001295
178	T02B11.8	5.6	6.98	-2.59	0.012313
179	ttr-48	7.71	9.08	-2.58	0.006256
180	W01F3.2	6.56	7.92	-2.57	0.008888
181	ZK593.2	5.39	6.75	-2.57	0.009193
182	F47B10.5	4.87	6.23	-2.56	0.001642
183	F42F12.3	5.64	7	-2.56	0.001804
184	F54F7.3	5.62	6.98	-2.56	0.008752
185	gsto-1	2.71	4.06	-2.56	0.00912
186	srz-100	3.59	4.95	-2.56	0.016204
187	C03G6.5	5.9	7.25	-2.55	0.000883
188	lec-5	6.79	8.14	-2.55	0.006522
189	K07C5.17	4.22	5.56	-2.54	0.007065
190	gst-42	7.01	8.35	-2.53	0.000317
191	T19H5.6	3.86	5.2	-2.53	0.001591
192	Y39F10A.1	3.74	5.08	-2.53	0.001795
193	T05E7.1	3.7	5.04	-2.53	0.001806
194	F59C6.16	8.31	9.64	-2.53	0.036801
195	Y68A4A.13	8.93	10.26	-2.52	0.004663
196	clcc-75	4.5	5.82	-2.51	0.000524
197	T12D8.5	7.3	8.63	-2.51	0.002482
198	W09D12.1	6.28	7.61	-2.51	0.004675
199	K02A11.4	6.39	7.71	-2.5	0.002262
200	T23G11.11	5.54	6.87	-2.5	0.01528
201	F44G4.3	3.8	5.13	-2.5	0.020929
202	slc-36.5	4.91	6.23	-2.49	0.001742
203	spp-18	8.24	9.55	-2.49	0.002482
204	T26H5.8	4.61	5.92	-2.49	0.002796
205	F52D4.1	7.45	8.77	-2.49	0.014873
206	spp-14	8.92	10.23	-2.48	0.000826

207	D1022.4	4.24	5.55	-2.48	0.002462
208	ZC239.16	6.38	7.69	-2.48	0.005525
209	F14F9.8	4.54	5.85	-2.48	0.006826
210	K07E3.4	6.16	7.47	-2.47	0.000318
211	T25B9.1	6.16	7.47	-2.47	0.009338
212	F41E6.5	5.19	6.49	-2.46	0.000465
213	F46G10.1	6.19	7.48	-2.46	0.003812
214	F35H8.2	3.2	4.49	-2.46	0.007707
215	lipl-2	7.02	8.31	-2.45	0.000008
216	T07G12.5	5.29	6.58	-2.45	0.001184
217	K07C11.3	4.83	6.12	-2.45	0.005101
218	kin-16	4.84	6.12	-2.44	0.000283
219	ins-35	4.3	5.59	-2.44	0.001023
220	klo-1	5.72	7.01	-2.44	0.001172
221	B0035.13	7.62	8.9	-2.44	0.010188
222	Y66H1A.5	6	7.28	-2.43	0.001968
223	math-37	3.65	4.93	-2.43	0.022692
224	K12H4.7	7.89	9.16	-2.42	0.001085
225	K12B6.9	5.42	6.69	-2.42	0.007504
226	tyr-3	1.56	2.83	-2.42	0.009613
227	gpx-7	1.86	3.13	-2.42	0.009817
228	cat-4	6.06	7.34	-2.42	0.017262
229	F26D11.12	4.13	5.4	-2.41	0.002668
230	acp-5	6.15	7.42	-2.41	0.003712
231	F32A5.9	4.3	5.57	-2.41	0.015652
232	F41G3.18	5.48	6.75	-2.41	0.040316
233	E04F6.9	7.17	8.43	-2.4	0.00378
234	Y42A5A.5	6.79	8.05	-2.4	0.017794
235	C31G12.1	3.43	4.69	-2.4	0.038221
236	F10G2.1	7.26	8.52	-2.39	0.002249
237	T08H10.1	8.28	9.53	-2.39	0.002477
238	tba-4	6.53	7.78	-2.39	0.002929
239	C01C10.2	6	7.26	-2.39	0.00459
240	C27A7.8	4.95	6.21	-2.39	0.008972
241	ttr-5	7.8	9.06	-2.39	0.011948

242	Y34B4A.5	4.69	5.93	-2.38	0.00566
243	M04D5.3	4.17	5.42	-2.38	0.017346
244	col-129	7.26	8.52	-2.38	0.017629
245	F54F7.2	2.4	3.65	-2.38	0.02576
246	C46G7.1	9.14	10.38	-2.37	0.000685
247	hex-1	7.46	8.7	-2.37	0.012304
248	R10E9.3	4.08	5.32	-2.37	0.046191
249	C35C5.9	7.39	8.63	-2.36	0.000995
250	R09H10.3	4.92	6.16	-2.36	0.009506
251	K03B8.8	3.71	4.95	-2.35	0.000244
252	lgc-32	4.47	5.7	-2.35	0.002063
253	F23D12.7	8.57	9.8	-2.35	0.006827
254	C08E8.4	3.41	4.64	-2.35	0.007186
255	pepm-1	1.55	2.78	-2.35	0.007308
256	cpg-9	3.65	4.88	-2.35	0.034412
257	col-19	9.4	10.62	-2.34	0.001439
258	H32K16.2	6.33	7.56	-2.34	0.003811
259	Y40C5A.4	6.71	7.94	-2.34	0.004535
260	F31E9.11	4.54	5.76	-2.34	0.005826
261	F49C12.7	4.98	6.21	-2.34	0.014757
262	W01D2.8	7.32	8.55	-2.34	0.040051
263	K09H9.5	5.54	6.76	-2.33	0.007094
264	Y39G10AR.26	4	5.22	-2.33	0.040273
265	C18A11.1	5.19	6.41	-2.33	0.043527
266	C16E9.1	4.03	5.25	-2.32	0.00202
267	clcc-146	6.26	7.48	-2.32	0.004675
268	ttr-24	6.24	7.45	-2.32	0.005753
269	abf-2	4.45	5.67	-2.32	0.032707
270	F13G11.3	6.91	8.12	-2.32	0.036753
271	F45B8.6	4.31	5.52	-2.32	0.041206
272	B0361.9	5.53	6.74	-2.31	0.000184
273	ech-7	8.12	9.33	-2.31	0.002602
274	W02D7.8	3.14	4.34	-2.31	0.012364
275	Y53F4B.58	7.81	9.02	-2.31	0.03349
276	T13F3.6	3.63	4.83	-2.3	0.000043

277	F23F1.7	3.95	5.15	-2.3	0.005406
278	ugt-5	3.78	4.98	-2.3	0.009656
279	W03D2.13	7.12	8.32	-2.29	0.000216
280	T04F8.8	8.35	9.54	-2.29	0.000722
281	btb-20	5.44	6.64	-2.29	0.003293
282	Y73F4A.1	5.76	6.95	-2.29	0.004178
283	C14A4.7	3.57	4.77	-2.29	0.006201
284	spp-16	4.91	6.11	-2.29	0.007106
285	T10B11.5	4.11	5.31	-2.29	0.008396
286	F14B8.4	5.36	6.56	-2.29	0.008735
287	F26E4.14	8.37	9.56	-2.29	0.026041
288	pud-3	2.09	3.29	-2.29	0.031074
289	F31E3.12	4.45	5.65	-2.29	0.036279
290	F42G2.5	4.49	5.68	-2.28	0.000137
291	DH11.2	5.44	6.63	-2.28	0.0014
292	moc-2	7.54	8.73	-2.28	0.002763
293	ttr-49	4.16	5.35	-2.28	0.003856
294	Y110A7A.21	5.77	6.96	-2.28	0.005687
295	hgo-1	7.05	8.24	-2.28	0.010334
296	Y116A8C.3	4.43	5.62	-2.28	0.010808
297	C44B11.6	5.47	6.66	-2.28	0.018301
298	nspc-19	5.48	6.67	-2.28	0.036774
299	C29F9.3	6.19	7.37	-2.27	0.000034
300	Y7A5A.1	5.38	6.56	-2.27	0.000156
301	ZC262.5	7.31	8.49	-2.27	0.001171
302	ZC262.5	7.31	8.49	-2.27	0.001171
303	mce-1	6.99	8.17	-2.27	0.007174
304	C02F5.14	5.06	6.24	-2.27	0.03736
305	ceeh-1	5.8	6.97	-2.25	0.000343
306	swt-3	6.41	7.57	-2.25	0.001554
307	F41E6.15	4.09	5.26	-2.25	0.003168
308	aqp-1	8.22	9.39	-2.25	0.01308
309	M7.8	2.68	3.85	-2.24	0.004751
310	ZK856.5	4.46	5.63	-2.24	0.023576
311	F30A10.11	2.3	3.46	-2.24	0.042829

312	AC3.5	4.72	5.87	-2.23	0.000101
313	K01A12.4	9.76	10.91	-2.23	0.00062
314	cpg-7	5.44	6.6	-2.23	0.00305
315	K06A4.7	9.53	10.69	-2.23	0.008593
316	chpf-1	6.99	8.15	-2.23	0.011595
317	dpm-3	6.4	7.56	-2.23	0.02189
318	mtl-2	7.15	8.3	-2.23	0.024608
319	ttr-40	3.69	4.84	-2.23	0.042221
320	W02D7.4	4.29	5.44	-2.22	0.001231
321	amx-3	3.57	4.72	-2.22	0.002413
322	F17E9.2	2.85	4.01	-2.22	0.005797
323	D1086.2	3.71	4.86	-2.22	0.007679
324	T19E7.6	7.64	8.79	-2.22	0.019405
325	nlp-27	1.31	2.47	-2.22	0.03391
326	F31D4.9	9.26	10.41	-2.22	0.040574
327	nhr-94	3.39	4.54	-2.22	0.046964
328	fbxa-197	4.05	5.2	-2.21	0.002283
329	C05C12.4	6.9	8.04	-2.21	0.002837
330	F35B12.10	6.9	8.04	-2.21	0.006332
331	F48G7.10	4.25	5.39	-2.21	0.00697
332	C14B9.10	8.43	9.57	-2.21	0.009152
333	R13H4.2	4.89	6.03	-2.21	0.009786
334	ucr-11	8.46	9.61	-2.21	0.011905
335	C18A3.10	4.3	5.44	-2.21	0.01359
336	mrps-17	5.87	7.02	-2.21	0.031067
337	Y71G12B.32	3.12	4.26	-2.21	0.038915
338	chpf-2	5.67	6.82	-2.21	0.043982
339	trx-2	8.06	9.2	-2.2	0.002935
340	Y62H9A.15	3.95	5.09	-2.2	0.007811
341	H14A12.5	5.54	6.68	-2.2	0.008941
342	C02F12.5	2.74	3.88	-2.2	0.011409
343	unc-27	10.29	11.41	-2.18	0.000447
344	gst-22	6.43	7.56	-2.18	0.00144
345	K10C2.14	3.08	4.2	-2.18	0.001537
346	Y50E8A.1	6.18	7.3	-2.18	0.002492

347	ZK909.6	4.56	5.68	-2.18	0.006529
348	K07A1.6	6.58	7.71	-2.18	0.011979
349	F19G12.9	6.99	8.11	-2.18	0.018463
350	T21F4.1	7.21	8.33	-2.18	0.019564
351	dph-3	7.05	8.17	-2.18	0.027727
352	C53C11.2	3.74	4.86	-2.18	0.045226
353	spp-15	8.68	9.79	-2.17	0.021318
354	F43G6.17	4.62	5.72	-2.16	0.00215
355	gcst-1	8.29	9.4	-2.16	0.004552
356	asg-2	8.16	9.27	-2.16	0.005417
357	C36B1.6	3.68	4.79	-2.16	0.02074
358	F56A12.5	6.05	7.16	-2.16	0.040467
359	T05C12.15	5.1	6.22	-2.16	0.047844
360	fbxc-1	5.36	6.47	-2.15	0.000905
361	fbxc-2	5.36	6.47	-2.15	0.000905
362	fbxc-2	5.36	6.47	-2.15	0.000905
363	fbxc-1	5.36	6.47	-2.15	0.000905
364	T10B5.7	8.24	9.34	-2.15	0.001289
365	Y34F4.1	5.21	6.32	-2.15	0.007237
366	ugt-39	3.54	4.65	-2.15	0.011319
367	dhs-2	3.78	4.89	-2.15	0.016485
368	C41C4.15	5.89	7	-2.15	0.020517
369	ZK1127.5	6.29	7.39	-2.15	0.021107
370	T05G5.4	2.03	3.13	-2.15	0.023091
371	math-24	3.92	5.02	-2.14	0.005981
372	M01B2.13	4.05	5.15	-2.14	0.008202
373	Y82E9BR.22	6.92	8.01	-2.14	0.011746
374	C30G7.4	3.92	5.02	-2.14	0.024664
375	btb-4	5.04	6.14	-2.14	0.036623
376	cpn-3	9.42	10.51	-2.13	0.000867
377	T05C3.6	4.19	5.28	-2.13	0.002618
378	Y40C5A.4	5.55	6.64	-2.13	0.002683
379	LLC1.2	6.43	7.52	-2.13	0.003672
380	C50F4.4	5.32	6.42	-2.13	0.011216
381	T20D3.2	7.72	8.81	-2.13	0.015745

382	lys-2	2.02	3.11	-2.13	0.017342
383	F45D3.3	7.4	8.49	-2.13	0.024685
384	fil-2	3.87	4.96	-2.13	0.025865
385	F28B4.4	3.8	4.89	-2.13	0.042611
386	Y48G1C.13	4.31	5.4	-2.13	0.046707
387	H36L18.2	9.28	10.37	-2.12	0.003842
388	clec-47	3.85	4.94	-2.12	0.004586
389	fbxa-64	6.15	7.23	-2.12	0.005567
390	clec-222	5.39	6.47	-2.12	0.013714
391	T04A11.1	4.15	5.23	-2.11	0.002054
392	T04A11.1	4.15	5.23	-2.11	0.002054
393	T13G4.4	4.96	6.04	-2.11	0.002397
394	ugt-18	6.38	7.45	-2.11	0.002987
395	K02A11.3	5.88	6.96	-2.11	0.005397
396	R06C1.4	9.78	10.85	-2.11	0.02396
397	Y54F10AM.8	7.12	8.19	-2.1	0.000383
398	Y42G9A.1	6.46	7.53	-2.1	0.000536
399	C15A11.7	3.71	4.78	-2.1	0.001752
400	R11D1.3	4.57	5.64	-2.1	0.001797
401	Y50D4A.5	4.82	5.89	-2.1	0.003314
402	T04G9.7	9.08	10.15	-2.1	0.00332
403	Y105C5A.13	6.51	7.58	-2.1	0.006104
404	gcsH-1	5.28	6.35	-2.1	0.011547
405	Y106G6E.4	6	7.07	-2.1	0.015212
406	lbp-2	7.48	8.56	-2.1	0.021464
407	R07E4.3	6.57	7.64	-2.1	0.02217
408	T09B4.4	4.61	5.68	-2.1	0.03138
409	gst-41	2.23	3.3	-2.1	0.041809
410	W06G6.20	3.63	4.69	-2.09	0.002995
411	Y105C5B.9	6.07	7.13	-2.09	0.010493
412	Y45F10D.6	4.76	5.82	-2.09	0.010523
413	F53F4.13	7.09	8.15	-2.09	0.012848
414	F29C6.1	5.02	6.09	-2.09	0.0279
415	C41G11.1	5.9	6.96	-2.09	0.033721
416	F30A10.13	6.32	7.38	-2.09	0.037001

417	nhr-92	5.69	6.74	-2.08	0.001429
418	T20D4.11	4.91	5.97	-2.08	0.002095
419	F45D11.14	6.96	8.02	-2.08	0.002878
420	F45D11.14	6.96	8.02	-2.08	0.002878
421	F45D11.14	6.96	8.02	-2.08	0.002878
422	pat-10	9.06	10.11	-2.08	0.005609
423	C49H3.12	6	7.06	-2.08	0.006844
424	F25B4.8	3.9	4.96	-2.08	0.011599
425	ttr-51	8	9.05	-2.08	0.012879
426	F37C12.3	7.73	8.79	-2.08	0.016795
427	tin-9.1	6.55	7.61	-2.08	0.023638
428	col-98	5.28	6.34	-2.08	0.036822
429	M03D4.3	6.34	7.39	-2.07	0.004105
430	K09A9.8	3.24	4.29	-2.07	0.005158
431	ZK856.7	6.35	7.4	-2.07	0.005496
432	W10D9.3	3.59	4.64	-2.07	0.008312
433	F19F10.3	6.9	7.95	-2.07	0.009851
434	C53H9.3	5.36	6.41	-2.07	0.015669
435	tin-13	8.78	9.83	-2.07	0.017922
436	clcc-70	1.92	2.97	-2.07	0.021346
437	nspc-12	8.71	9.75	-2.07	0.024236
438	mlt-3	4.44	5.49	-2.07	0.026752
439	gst-30	3.06	4.11	-2.07	0.041779
440	T28C6.8	6.09	7.14	-2.07	0.043907
441	C49A9.1	2.48	3.52	-2.06	0.001123
442	gsnl-1	4.97	6.01	-2.06	0.001456
443	fbxa-189	4.24	5.28	-2.06	0.004273
444	M142.8	6.91	7.95	-2.06	0.005166
445	Y38H6C.21	2.2	3.24	-2.06	0.005338
446	T26H5.4	5.4	6.44	-2.06	0.005344
447	clcc-218	2.64	3.69	-2.06	0.009651
448	ZK809.8	7.97	9.01	-2.06	0.010063
449	F53A3.7	5.8	6.84	-2.06	0.011162
450	rpac-19	6.2	7.25	-2.06	0.025164
451	T23E7.6	8.18	9.22	-2.06	0.028509

452	C46A5.13	2.58	3.62	-2.06	0.035024
453	C04E12.4	3.34	4.38	-2.06	0.042529
454	erg-28	5.15	6.2	-2.06	0.047787
455	sek-4	4.41	5.45	-2.05	0.005101
456	C14A4.6	5.97	7.01	-2.05	0.010639
457	ZK563.7	3.2	4.23	-2.05	0.014725
458	bath-26	2.86	3.9	-2.05	0.016105
459	clcc-52	6.59	7.62	-2.05	0.027715
460	rhr-1	7.62	8.66	-2.05	0.038232
461	T04F3.4	2.85	3.89	-2.05	0.039255
462	T01C8.2	4.33	5.36	-2.05	0.042521
463	C50H2.13	4.45	5.48	-2.04	0.002388
464	clcc-85	7.7	8.73	-2.04	0.004157
465	C05B5.8	5.08	6.11	-2.04	0.005955
466	C35D10.17	7.2	8.23	-2.04	0.006386
467	F47B8.8	7.05	8.08	-2.04	0.006533
468	ttr-15	8.08	9.1	-2.04	0.008337
469	ZK512.4	7.45	8.47	-2.04	0.011439
470	B0454.5	3.23	4.26	-2.04	0.011921
471	F21C10.10	8.73	9.76	-2.04	0.012075
472	F01G4.5	6.03	7.06	-2.04	0.022052
473	pin-2	4.66	5.69	-2.04	0.02437
474	mdt-31	7.1	8.13	-2.04	0.027086
475	srz-99	3.89	4.92	-2.04	0.038645
476	ttr-59	4.68	5.71	-2.04	0.040406
477	hlh-13	2.93	3.95	-2.03	0.000307
478	C34F6.11	3.87	4.89	-2.03	0.000911
479	F45F2.9	6.31	7.33	-2.03	0.003399
480	nlp-40	7.57	8.58	-2.03	0.007858
481	C47E12.12	3.01	4.03	-2.03	0.008246
482	K08C7.7	3.02	4.04	-2.03	0.029982
483	gst-3	4.41	5.43	-2.02	0.000487
484	clcc-82	4.93	5.95	-2.02	0.001258
485	C08B6.10	4.44	5.46	-2.02	0.001339
486	nas-9	5.79	6.81	-2.02	0.002429

487	Y49E10.18	7.64	8.66	-2.02	0.002669
488	C52E2.5	3.71	4.73	-2.02	0.003435
489	Y47G6A.33	5.04	6.05	-2.02	0.006183
490	fbxa-208	5.21	6.22	-2.02	0.007311
491	C39B5.5	3.49	4.5	-2.02	0.010498
492	flp-34	6.63	7.64	-2.02	0.011249
493	F10E9.11	5.42	6.43	-2.02	0.038395
494	Y51B9A.9	4.68	5.69	-2.01	0.000217
495	nnt-1	5.57	6.58	-2.01	0.000891
496	C39D10.3	5.58	6.58	-2.01	0.001296
497	smf-3	4.85	5.85	-2.01	0.002105
498	T26E3.4	7.6	8.61	-2.01	0.003207
499	F45G2.10	6.94	7.95	-2.01	0.009135
500	W02D9.6	8.73	9.74	-2.01	0.009155
501	K07A1.13	4.84	5.85	-2.01	0.01068
502	C17E4.11	5.78	6.79	-2.01	0.016727
503	T12D8.10	7.81	8.81	-2.01	0.017256
504	Y34B4A.9	7.39	8.39	-2.01	0.017776
505	tsen-2	5.41	6.42	-2.01	0.018956
506	psmd-9	5.41	6.42	-2.01	0.023369
507	E02H1.6	5.93	6.94	-2.01	0.029029
508	Y54E5A.8	7.94	8.93	-2	0.003504
509	F42A10.6	6.73	7.73	-2	0.008546
510	K07A12.8	4.11	5.11	-2	0.01336
511	ZK616.2	6.95	7.95	-2	0.015527
512	F41C3.5	7.57	8.57	-2	0.015843
513	W05B2.10	7.5	8.5	-2	0.016394
514	K07A1.3	4.23	5.23	-2	0.019059
515	cyn-11	6.85	7.85	-2	0.021074
516	ech-9	4.18	5.17	-2	0.026495
517	C54D1.7	4.77	5.76	-1.99	0.000472
518	H11E01.2	3.78	4.77	-1.99	0.004918
519	T10F2.5	6.37	7.37	-1.99	0.009281
520	frt-1	5.66	6.66	-1.99	0.009315
521	tag-280	5.26	6.26	-1.99	0.014253

522	F47E1.4	3.98	4.97	-1.99	0.017536
523	F14H8.10	5.04	6.03	-1.99	0.02067
524	Y39B6A.5	8.88	9.88	-1.99	0.023888
525	Y45F10C.4	5.85	6.85	-1.99	0.046268
526	ech-8	4.61	5.6	-1.98	0.000162
527	F35C8.5	9.26	10.24	-1.98	0.001091
528	F46B6.12	7.75	8.73	-1.98	0.003602
529	R01H2.7	4.33	5.32	-1.98	0.007324
530	Y51A2D.18	4.84	5.83	-1.98	0.010098
531	ZK1290.13	6.63	7.62	-1.98	0.015135
532	Y39B6A.3	6.55	7.54	-1.98	0.015222
533	Y66D12A.21	8.2	9.19	-1.98	0.019142
534	K01C8.1	7.76	8.75	-1.98	0.019356
535	cyp-33E1	5.53	6.51	-1.97	0.001339
536	F22D6.9	5.05	6.03	-1.97	0.001912
537	haf-9	6.49	7.47	-1.97	0.002556
538	C15B12.1	4.83	5.81	-1.97	0.002578
539	twk-5	5.08	6.06	-1.97	0.004111
540	nhr-18	6.61	7.59	-1.97	0.004632
541	dhs-15	4.43	5.41	-1.97	0.007305
542	nepr-1	7.83	8.81	-1.97	0.00919
543	clec-80	4.37	5.35	-1.97	0.012699
544	lys-7	5.62	6.6	-1.97	0.015473
545	D1007.4	5.86	6.84	-1.97	0.022524
546	K06A4.10	3.72	4.7	-1.97	0.022649
547	Y82E9BR.4	2.34	3.31	-1.97	0.027555
548	K10C2.8	4.65	5.63	-1.97	0.032726
549	Y54G9A.9	5.55	6.53	-1.97	0.034128
550	ZC204.12	7.68	8.65	-1.96	0.00012
551	ftn-1	4.61	5.58	-1.96	0.000521
552	daao-1	3.32	4.29	-1.96	0.000893
553	D1086.8	4.53	5.5	-1.96	0.001036
554	alh-1	9.66	10.63	-1.96	0.002656
555	nduf-5	7.79	8.76	-1.96	0.003039
556	apm-1	8.38	9.35	-1.96	0.005274

557	ZC449.4	7.46	8.43	-1.96	0.0065
558	C43F9.7	6.32	7.29	-1.96	0.01575
559	mdt-22	7.88	8.85	-1.96	0.017501
560	F35D11.4	4.32	5.29	-1.96	0.02442
561	F33G12.7	6.52	7.49	-1.96	0.027972
562	mrpl-36	8.27	9.24	-1.96	0.031009
563	C15C8.7	8.5	9.47	-1.96	0.031454
564	F52D2.5	3.48	4.45	-1.96	0.033154
565	Y57G11B.5	7.22	8.19	-1.96	0.037527
566	ndx-4	6.49	7.46	-1.96	0.038669
567	R10E4.9	6.23	7.21	-1.96	0.041147
568	F17C11.12	3.61	4.58	-1.96	0.044289
569	R03H10.1	5.34	6.31	-1.95	0.00147
570	B0462.5	6.5	7.46	-1.95	0.001792
571	F37H8.5	7	7.96	-1.95	0.002013
572	E01A2.5	5.37	6.34	-1.95	0.00216
573	mrps-18A	8	8.97	-1.95	0.004795
574	Y32F6A.4	7.15	8.12	-1.95	0.005379
575	K02E11.7	6.6	7.56	-1.95	0.012145
576	syp-2	6.87	7.83	-1.95	0.016648
577	F42H10.2	5.51	6.47	-1.95	0.023365
578	F43G6.16	2.09	3.06	-1.95	0.024155
579	C55A6.4	1.94	2.89	-1.94	0.000875
580	B0379.1	5.68	6.64	-1.94	0.001717
581	nhr-133	5.86	6.82	-1.94	0.003625
582	sma-2	5.08	6.04	-1.94	0.006105
583	W10G11.1	4.25	5.21	-1.94	0.007615
584	Y54F10AM.5	8.41	9.36	-1.94	0.010304
585	ethe-1	3.93	4.89	-1.94	0.015933
586	C09B7.2	6.52	7.48	-1.94	0.018488
587	mrps-11	8.36	9.32	-1.94	0.019325
588	Y42H9AR.5	2.25	3.21	-1.94	0.021969
589	glrx-21	6.49	7.44	-1.94	0.024862
590	tag-234	5.12	6.07	-1.94	0.030924
591	T06D10.3	3.94	4.89	-1.94	0.038374

592	oac-28	4.7	5.66	-1.94	0.047482
593	F13H8.11	4.96	5.91	-1.93	0.000622
594	math-39	3.52	4.47	-1.93	0.006905
595	F53F4.10	8.12	9.07	-1.93	0.008418
596	W02D3.12	6.67	7.62	-1.93	0.009143
597	C05C10.7	7.68	8.63	-1.93	0.01201
598	nhr-153	3.92	4.87	-1.93	0.012227
599	mif-2	5.91	6.86	-1.93	0.017831
600	Y71H2AM.12	4.12	5.06	-1.93	0.02024
601	E02H1.5	7.61	8.56	-1.93	0.02689
602	C32D5.1	3.65	4.6	-1.93	0.035103
603	tag-189	5.77	6.72	-1.93	0.047648
604	ZK1240.2	5.02	5.97	-1.92	0.001137
605	fbxa-127	3.76	4.71	-1.92	0.001643
606	B0393.9	5.87	6.81	-1.92	0.002434
607	C07A4.2	3.48	4.42	-1.92	0.002755
608	ttr-7	4.83	5.77	-1.92	0.00537
609	C23H4.3	3.24	4.19	-1.92	0.005506
610	F32D8.12	5.5	6.44	-1.92	0.007466
611	exos-8	6.05	6.99	-1.92	0.007815
612	prdx-6	6.65	7.6	-1.92	0.009275
613	ZK1098.11	5.57	6.51	-1.92	0.012068
614	F10E7.6	6.92	7.86	-1.92	0.017695
615	F22B7.16	2	2.94	-1.92	0.019992
616	C08H9.15	5.58	6.52	-1.92	0.020036
617	asp-4	8.31	9.25	-1.92	0.030406
618	acbp-1	7.72	8.66	-1.92	0.032194
619	heh-1	7.64	8.58	-1.92	0.038465
620	snr-7	6.02	6.96	-1.92	0.039671
621	Y77E11A.14	8.28	9.21	-1.91	0.000024
622	PDB1.1	5.68	6.62	-1.91	0.00033
623	fbxc-2	5.96	6.9	-1.91	0.001132
624	scrm-2	1.85	2.78	-1.91	0.002485
625	aakg-4	5.89	6.82	-1.91	0.004143
626	ras-2	7.39	8.32	-1.91	0.005519

627	C37A2.6	4.38	5.32	-1.91	0.007157
628	C29G2.6	6.61	7.54	-1.91	0.015771
629	C24B5.4	4.08	5.01	-1.91	0.016232
630	C50F2.4	7.07	8	-1.91	0.017878
631	Y116F11B.17	5.82	6.76	-1.91	0.017954
632	Y18D10A.3	5.5	6.43	-1.91	0.021897
633	T07A9.15	6	6.93	-1.91	0.023517
634	nhr-109	4.99	5.92	-1.91	0.028296
635	Y37E3.28	4.83	5.76	-1.91	0.046308
636	Y43F8B.24	3.59	4.51	-1.9	0.000316
637	tyr-1	6.33	7.25	-1.9	0.00091
638	T02G5.7	7.41	8.34	-1.9	0.006292
639	ins-10	3.96	4.88	-1.9	0.006606
640	mdt-20	6.85	7.78	-1.9	0.007244
641	Y48A5A.3	5.51	6.43	-1.9	0.009217
642	hpo-18	9.63	10.56	-1.9	0.014285
643	pot-2	7.39	8.31	-1.9	0.016467
644	tag-209	6.29	7.22	-1.9	0.021513
645	hrg-2	3.22	4.14	-1.9	0.032588
646	hint-1	6.94	7.87	-1.9	0.033149
647	F40F11.3	6.79	7.71	-1.9	0.034167
648	F48E3.4	7.35	8.27	-1.9	0.04003
649	Y106G6D.8	5.93	6.85	-1.9	0.048322
650	kbp-2	4.63	5.55	-1.9	0.049054
651	F45H10.2	7.33	8.24	-1.89	0.006068
652	oxy-5	7.45	8.37	-1.89	0.006129
653	F54E7.9	7.34	8.25	-1.89	0.00639
654	C05D9.9	8.97	9.89	-1.89	0.008854
655	R03A10.5	5.14	6.06	-1.89	0.009571
656	ZK185.5	5	5.92	-1.89	0.011259
657	F08B6.1	7.24	8.16	-1.89	0.013744
658	C06E2.12	2.42	3.34	-1.89	0.013859
659	F57C2.4	8.12	9.04	-1.89	0.017539
660	T04C12.8	4.08	4.99	-1.89	0.022273
661	C47E12.9	2.52	3.44	-1.89	0.023752

662	lips-17	3.67	4.58	-1.88	0.000101
663	dct-11	7.32	8.24	-1.88	0.001227
664	R01B10.3	8.23	9.15	-1.88	0.002483
665	F48D6.4	7.49	8.4	-1.88	0.002592
666	spp-3	9.66	10.57	-1.88	0.002747
667	Y71H2AM.14	4.03	4.94	-1.88	0.014376
668	ckc-1	4.29	5.2	-1.88	0.014598
669	C17G1.2	7.06	7.97	-1.88	0.016234
670	T10H9.8	7.4	8.31	-1.88	0.023076
671	F10F2.12	6.1	7.01	-1.88	0.024181
672	mrps-24	6.38	7.29	-1.88	0.026047
673	prx-2	4.52	5.43	-1.88	0.026684
674	F22F4.4	8.13	9.04	-1.88	0.033573
675	F59B10.6	5.06	5.96	-1.87	0.002427
676	lipl-5	7.8	8.7	-1.87	0.00504
677	F53C11.3	6.48	7.39	-1.87	0.010343
678	ZK353.9	5.41	6.31	-1.87	0.011712
679	ttr-1	6.15	7.06	-1.87	0.016851
680	Y43B11AR.1	7.98	8.88	-1.87	0.018086
681	C23G10.2	6.69	7.59	-1.87	0.019116
682	W04D2.14	5.21	6.11	-1.87	0.02016
683	Y71F9AR.4	5.64	6.55	-1.87	0.025896
684	ins-22	4.81	5.71	-1.87	0.026396
685	clcc-169	2.34	3.24	-1.87	0.041625
686	nceh-1	2.78	3.67	-1.86	0.000109
687	F21F3.4	5.32	6.22	-1.86	0.002173
688	W01B11.6	6.17	7.07	-1.86	0.005298
689	F26A3.4	9.06	9.95	-1.86	0.006872
690	T16G1.18	2.25	3.15	-1.86	0.006999
691	nuo-6	7.62	8.51	-1.86	0.007985
692	mrpl-35	6.46	7.36	-1.86	0.008011
693	fut-1	5.62	6.52	-1.86	0.012231
694	C29F9.4	3.88	4.77	-1.86	0.013762
695	F45G2.7	7.22	8.12	-1.86	0.014844
696	mrps-21	6.91	7.81	-1.86	0.015981

697	dhs-12	7.35	8.24	-1.86	0.01816
698	C48B6.2	5.27	6.16	-1.86	0.019833
699	fbxa-145	3.98	4.88	-1.86	0.02055
700	srg-34	4.29	5.18	-1.86	0.021158
701	C10A4.10	6.1	7	-1.86	0.025315
702	R04A9.6	2.9	3.8	-1.86	0.041983
703	inx-11	4	4.89	-1.85	0.002891
704	C16H3.6	4.45	5.34	-1.85	0.005958
705	C16H3.7	4.45	5.34	-1.85	0.005958
706	JC8.4	6.44	7.33	-1.85	0.008488
707	tag-174	9.38	10.26	-1.85	0.008981
708	H20J04.9	6.75	7.63	-1.85	0.009813
709	btb-16	2.78	3.66	-1.85	0.011112
710	Y71H2B.4	6.35	7.24	-1.85	0.01305
711	dnc-5	7.6	8.48	-1.85	0.013323
712	lsm-7	7.01	7.9	-1.85	0.016946
713	K01C8.7	4.79	5.68	-1.85	0.017466
714	R151.16	7.54	8.43	-1.85	0.02834
715	drd-5	3.98	4.87	-1.85	0.036369
716	trpp-6	7.67	8.56	-1.85	0.036722
717	C18E9.4	7.55	8.44	-1.85	0.044047
718	Y105C5A.24	6.37	7.25	-1.84	0.00059
719	pcp-1	6.57	7.45	-1.84	0.001975
720	fbxa-77	3.94	4.81	-1.84	0.007585
721	C15F1.1	3.34	4.22	-1.84	0.007616
722	ZC410.5	7.53	8.41	-1.84	0.011921
723	mai-2	7.23	8.11	-1.84	0.014225
724	blos-9	6.58	7.46	-1.84	0.017054
725	F44A6.4	4.8	5.69	-1.84	0.017096
726	R05D7.7	4.87	5.75	-1.84	0.018397
727	F14F9.5	5.93	6.81	-1.84	0.018576
728	cox-17	4.14	5.02	-1.84	0.021161
729	hppt-1	8.38	9.26	-1.84	0.030208
730	nbet-1	6.37	7.25	-1.84	0.034368
731	lec-4	5.35	6.23	-1.84	0.038485

732	tomm-22	6.79	7.67	-1.84	0.047015
733	F23G4.1	2.66	3.53	-1.83	0.000021
734	Y51H4A.5	3.41	4.28	-1.83	0.000057
735	D1086.5	6.66	7.53	-1.83	0.000813
736	K11D9.3	6.13	7	-1.83	0.001722
737	scav-1	6.46	7.33	-1.83	0.002249
738	R09F10.1	4.63	5.5	-1.83	0.002927
739	best-17	4.54	5.42	-1.83	0.003617
740	fbxa-67	4.26	5.13	-1.83	0.004508
741	H29C22.1	6.88	7.75	-1.83	0.011949
742	T20D4.10	3.47	4.34	-1.83	0.01236
743	crn-5	6.1	6.98	-1.83	0.012382
744	Y102A5C.36	5.88	6.76	-1.83	0.014345
745	T03F1.12	5.76	6.63	-1.83	0.016847
746	D1054.18	1.64	2.51	-1.83	0.020092
747	K07G5.5	4.63	5.5	-1.83	0.022611
748	Y43F4B.9	6.2	7.07	-1.83	0.024044
749	djr-1.1	8.14	9.01	-1.83	0.024632
750	zig-6	3.74	4.62	-1.83	0.026606
751	F14F3.5	2.91	3.78	-1.83	0.028583
752	aman-1	4.9	5.77	-1.83	0.03962
753	T03F7.14	8.18	9.05	-1.83	0.049018
754	lsm-6	6.91	7.79	-1.83	0.049419
755	C14B1.12	4.81	5.67	-1.82	0.001626
756	K08H2.10	3.81	4.68	-1.82	0.001753
757	sfxn-5	6.5	7.36	-1.82	0.007063
758	pcbd-1	5.64	6.5	-1.82	0.007113
759	nhr-126	4.66	5.52	-1.82	0.007592
760	fbxa-188	3.6	4.47	-1.82	0.008251
761	clcc-150	9.12	9.98	-1.82	0.010178
762	C16E9.23	1.61	2.47	-1.82	0.011073
763	C07A4.3	3.55	4.41	-1.82	0.012447
764	F47G3.4	4.79	5.65	-1.82	0.013454
765	F52A8.5	7.74	8.6	-1.82	0.0175
766	C10C5.7	6.16	7.02	-1.82	0.018602

767	T04F3.2	4.98	5.84	-1.82	0.020627
768	nhr-90	5.78	6.64	-1.82	0.024119
769	pdf-6	6.84	7.7	-1.82	0.025123
770	F32H5.3	4.2	5.07	-1.82	0.025866
771	T20H4.5	8.29	9.15	-1.82	0.02886
772	T05A10.6	4.63	5.49	-1.82	0.030848
773	mrpl-23	5.97	6.83	-1.82	0.032
774	gst-15	3.21	4.07	-1.82	0.039633
775	aqp-10	6.25	7.11	-1.82	0.042433
776	C10G8.4	3.13	3.99	-1.82	0.049442
777	C06G3.5	8.97	9.83	-1.81	0.000118
778	lipl-7	6.95	7.8	-1.81	0.00115
779	ZK632.14	7.22	8.08	-1.81	0.001842
780	F59B10.5	5.91	6.76	-1.81	0.003634
781	Y62H9A.11	1.91	2.76	-1.81	0.004627
782	C53D6.7	3.82	4.68	-1.81	0.005366
783	K01A11.2	4.96	5.81	-1.81	0.00749
784	F19C7.1	8.52	9.38	-1.81	0.00805
785	bath-5	6.37	7.23	-1.81	0.00954
786	K02E2.6	6.17	7.03	-1.81	0.011932
787	B0495.9	7.09	7.95	-1.81	0.015032
788	F28B3.10	7.11	7.96	-1.81	0.020038
789	Y69A2AR.3	6.88	7.74	-1.81	0.020775
790	C55A6.7	1.6	2.46	-1.81	0.026017
791	sel-9	8.83	9.69	-1.81	0.027407
792	R09D1.12	2.23	3.08	-1.81	0.029588
793	lipl-3	6.28	7.14	-1.81	0.031632
794	nhr-265	3.62	4.47	-1.81	0.0332
795	F26F12.8	3.92	4.78	-1.81	0.033463
796	fbxa-85	2.42	3.27	-1.81	0.037816
797	F14H12.10	3.1	3.95	-1.81	0.039658
798	F14H12.10	3.1	3.95	-1.81	0.039658
799	ppt-1	4.97	5.83	-1.81	0.039909
800	W03G9.8	8.11	8.97	-1.81	0.042849
801	C28G1.2	4.69	5.53	-1.8	0.001412

802	C17H11.5	3.07	3.91	-1.8	0.003038
803	gas-1	8.5	9.34	-1.8	0.004009
804	ZC412.3	2.69	3.54	-1.8	0.006342
805	ndx-3	5.91	6.75	-1.8	0.006559
806	hpo-31	6.94	7.79	-1.8	0.009374
807	F08F1.3	6.91	7.76	-1.8	0.009472
808	K10C9.1	1.81	2.67	-1.8	0.009607
809	F28C6.8	8.1	8.94	-1.8	0.010649
810	T20D4.12	3.77	4.62	-1.8	0.013617
811	F53F4.16	8.95	9.79	-1.8	0.015336
812	T07D4.5	6.88	7.73	-1.8	0.015342
813	F08F8.7	6.93	7.78	-1.8	0.016987
814	C33A12.1	7.07	7.91	-1.8	0.019629
815	prdx-3	8.76	9.6	-1.8	0.027436
816	F44D12.2	5.93	6.78	-1.8	0.036171
817	nhr-111	1.66	2.51	-1.8	0.043956
818	asp-7	2.29	3.14	-1.8	0.047643
819	R04B5.5	6.61	7.45	-1.79	0.000108
820	F31F7.1	8.44	9.28	-1.79	0.000297
821	F39H12.3	8.3	9.14	-1.79	0.000398
822	Y11D7A.3	6.34	7.17	-1.79	0.000797
823	T04C12.11	9.05	9.89	-1.79	0.00149
824	C17G10.7	5.51	6.36	-1.79	0.003276
825	bcmo-2	3.4	4.24	-1.79	0.003767
826	C08G5.6	2.73	3.57	-1.79	0.004749
827	lgc-44	4.17	5	-1.79	0.005569
828	F27E5.1	8.23	9.07	-1.79	0.005912
829	fah-1	8.06	8.9	-1.79	0.006523
830	F48C5.4	2.05	2.89	-1.79	0.006678
831	C33H5.13	4.79	5.63	-1.79	0.008397
832	ctg-1	7.18	8.02	-1.79	0.014177
833	nhr-230	4.72	5.56	-1.79	0.016528
834	ave-1	7.98	8.82	-1.79	0.01991
835	srp-8	2.92	3.76	-1.79	0.020558
836	Y47G6A.21	6.73	7.57	-1.79	0.022228

837	sri-40	4.17	5	-1.79	0.023433
838	F45H11.5	5.43	6.27	-1.79	0.024747
839	mutd-1	7.02	7.86	-1.79	0.024866
840	nhr-42	5.1	5.94	-1.79	0.027382
841	arch-1	6.28	7.11	-1.79	0.033102
842	oxa-1	6.58	7.42	-1.79	0.037942
843	T27E9.2	6.29	7.13	-1.79	0.040658
844	B0286.3	5.22	6.05	-1.78	0.000266
845	ZK1321.4	6.31	7.14	-1.78	0.000419
846	W02B12.4	3.85	4.68	-1.78	0.000654
847	F37C4.6	5.18	6.01	-1.78	0.001346
848	C08E3.1	7.03	7.86	-1.78	0.002038
849	apc-10	5.89	6.72	-1.78	0.003151
850	fbxa-114	5.55	6.37	-1.78	0.004018
851	ZC373.5	4.15	4.98	-1.78	0.004256
852	F25H9.7	6.36	7.19	-1.78	0.004773
853	F26A3.1	7.45	8.28	-1.78	0.004811
854	stdh-1	3.91	4.74	-1.78	0.004835
855	mpst-1	6.24	7.07	-1.78	0.006009
856	fbxa-5	1.77	2.6	-1.78	0.008766
857	F35H10.6	6.61	7.44	-1.78	0.011284
858	T19D12.2	4.38	5.21	-1.78	0.011586
859	W02D9.4	4.87	5.71	-1.78	0.011853
860	algn-13	7.53	8.36	-1.78	0.0126
861	nhr-21	5.84	6.68	-1.78	0.013409
862	lsm-1	6.91	7.74	-1.78	0.013652
863	ZK1236.5	7.67	8.5	-1.78	0.01402
864	F38E11.9	3.85	4.68	-1.78	0.014971
865	pdf-5	8.77	9.6	-1.78	0.015241
866	pmp-2	5.03	5.87	-1.78	0.015476
867	F59C6.12	5.9	6.73	-1.78	0.015892
868	F55B11.4	6	6.83	-1.78	0.018833
869	F18F11.1	6.34	7.17	-1.78	0.020096
870	F58A3.4	4.39	5.22	-1.78	0.020114
871	syp-3	6.72	7.55	-1.78	0.025542

872	mrpl-53	6.21	7.04	-1.78	0.026117
873	ttr-2	9.15	9.98	-1.78	0.029009
874	pfid-4	6.08	6.91	-1.78	0.029931
875	B0205.6	6.01	6.84	-1.78	0.030154
876	C30B5.2	7.13	7.96	-1.78	0.031438
877	aps-3	7.76	8.59	-1.78	0.031531
878	B0491.7	5.76	6.59	-1.78	0.045855
879	F20G2.3	4.5	5.33	-1.78	0.049624
880	B0228.7	7.29	8.11	-1.77	0.000595
881	R02D5.8	6.1	6.92	-1.77	0.000922
882	fipr-1	8.93	9.76	-1.77	0.000961
883	cysl-2	4.91	5.74	-1.77	0.001627
884	Y43B11AR.3	6.74	7.56	-1.77	0.002709
885	Y105C5A.17	1.95	2.77	-1.77	0.003245
886	F23H12.3	4.25	5.07	-1.77	0.003587
887	C25H3.14	5.05	5.88	-1.77	0.003776
888	clcc-1	9.69	10.52	-1.77	0.005863
889	fbxa-80	4.05	4.88	-1.77	0.0082
890	alh-3	7.67	8.49	-1.77	0.008452
891	F41C3.1	2.14	2.97	-1.77	0.011287
892	idhg-2	4.54	5.37	-1.77	0.012577
893	C41G7.8	6.19	7.01	-1.77	0.01262
894	D1005.4	4.73	5.55	-1.77	0.013218
895	fbf-2	5.66	6.48	-1.77	0.013635
896	T27C5.8	2.49	3.31	-1.77	0.016312
897	mrpl-50	7.51	8.34	-1.77	0.016669
898	R12B2.2	3.85	4.67	-1.77	0.020158
899	T05H4.10	7.31	8.13	-1.77	0.022163
900	ZK616.3	5.04	5.86	-1.77	0.024821
901	C46G7.2	7.85	8.67	-1.77	0.025934
902	ttr-20	5.36	6.18	-1.77	0.028008
903	tin-10	6.31	7.14	-1.77	0.033971
904	C31H5.4	6.83	7.65	-1.77	0.035613
905	sdz-27	7.42	8.24	-1.77	0.047862
906	C17H12.8	7.26	8.07	-1.76	0.000609

907	glt-5	5.69	6.51	-1.76	0.003289
908	C03B1.14	4.42	5.23	-1.76	0.00635
909	evl-20	6.61	7.42	-1.76	0.006506
910	K03H1.11	7.43	8.25	-1.76	0.007377
911	ttl-15	2.88	3.69	-1.76	0.008802
912	Y82E9BR.21	4.83	5.65	-1.76	0.009186
913	nas-11	4.72	5.54	-1.76	0.009767
914	F59A2.5	6.61	7.43	-1.76	0.011115
915	F35H10.14	2.39	3.21	-1.76	0.017635
916	B0416.11	2.86	3.67	-1.76	0.021129
917	W03D8.8	3.56	4.37	-1.76	0.021143
918	Y54G2A.10	10.36	11.17	-1.76	0.021902
919	clk-1	7.6	8.41	-1.76	0.022258
920	mmab-1	5.31	6.13	-1.76	0.023363
921	F08H9.13	6.09	6.9	-1.76	0.024581
922	T11B7.5	4.66	5.48	-1.76	0.026142
923	Y53F4B.23	2.67	3.48	-1.76	0.028295
924	rad-8	6.28	7.09	-1.76	0.035326
925	bath-7	4.28	5.1	-1.76	0.036249
926	Y66A7A.2	5.68	6.5	-1.76	0.039622
927	syx-6	4.87	5.68	-1.76	0.039946
928	Y69E1A.5	4.41	5.23	-1.76	0.043024
929	K10B3.1	5.78	6.59	-1.76	0.048378
930	B0284.1	4.37	5.18	-1.76	0.049539
931	pyk-2	6.99	7.79	-1.75	0.000064
932	Y37D8A.2	9.23	10.04	-1.75	0.001113
933	ceh-60	5.24	6.05	-1.75	0.002119
934	fat-1	10.3	11.1	-1.75	0.002272
935	vglu-2	6.28	7.09	-1.75	0.002344
936	C34C12.7	4.24	5.05	-1.75	0.005039
937	C53A5.16	5.85	6.66	-1.75	0.005414
938	T04A6.2	4.02	4.83	-1.75	0.005764
939	coq-4	6.09	6.9	-1.75	0.007352
940	ubq-2	9.41	10.22	-1.75	0.011045
941	rpc-11	4.97	5.78	-1.75	0.0115

942	R04F11.2	8.07	8.87	-1.75	0.011655
943	Y55B1AL.2	7.98	8.79	-1.75	0.011682
944	nhr-210	3.91	4.72	-1.75	0.012087
945	T19D2.3	4.86	5.67	-1.75	0.012874
946	C25H3.9	8.15	8.96	-1.75	0.014254
947	nhr-19	6.57	7.38	-1.75	0.017789
948	mrpl-32	7.22	8.03	-1.75	0.018242
949	C44B7.7	4.62	5.43	-1.75	0.019208
950	mrpl-21	6.6	7.41	-1.75	0.020075
951	fbxa-13	4.04	4.85	-1.75	0.021149
952	C03D6.1	4.24	5.04	-1.75	0.021238
953	C17E4.4	6.34	7.14	-1.75	0.022088
954	Y119D3B.13	7.27	8.08	-1.75	0.023967
955	Y51H7C.26	1.27	2.08	-1.75	0.02655
956	rmo-1	7.37	8.18	-1.75	0.026636
957	tag-261	6.09	6.89	-1.75	0.039412
958	gst-23	4	4.8	-1.74	0.000186
959	sqst-2	6.43	7.23	-1.74	0.000214
960	C35E7.6	4.72	5.52	-1.74	0.002979
961	F26G1.2	7.84	8.64	-1.74	0.003944
962	atic-1	4.93	5.73	-1.74	0.00437
963	T20G5.14	8.71	9.51	-1.74	0.007421
964	Y51H1A.3	9.79	10.59	-1.74	0.009543
965	F58G11.4	3.98	4.78	-1.74	0.014212
966	trpp-5	7.66	8.45	-1.74	0.014717
967	fbxa-69	4.36	5.16	-1.74	0.016466
968	mrps-25	7.38	8.17	-1.74	0.017305
969	elo-6	7.92	8.72	-1.74	0.021489
970	C06G3.8	8.96	9.76	-1.74	0.022734
971	F47B8.2	8.55	9.35	-1.74	0.025438
972	C27H5.4	5.3	6.1	-1.74	0.025778
973	nhr-58	4.8	5.6	-1.74	0.02759
974	Y53C12A.10	7.45	8.25	-1.74	0.032748
975	fahd-1	5.6	6.4	-1.74	0.03711
976	mtx-2	8.41	9.21	-1.74	0.038549

977	T19B4.3	7.12	7.92	-1.74	0.039703
978	gpx-6	1.89	2.69	-1.74	0.044092
979	F45G2.9	6.18	6.97	-1.73	0.001772
980	nuo-4	8.19	8.98	-1.73	0.004002
981	Y48E1C.4	6.44	7.22	-1.73	0.005907
982	Y94H6A.8	9.25	10.04	-1.73	0.007267
983	Y60A3A.9	9.01	9.81	-1.73	0.009195
984	rps-21	9.4	10.19	-1.73	0.010326
985	F30F8.5	5.26	6.06	-1.73	0.010732
986	ZK1127.12	5.26	6.05	-1.73	0.012458
987	T10B9.13	2.54	3.32	-1.73	0.013357
988	K08F9.1	4.7	5.49	-1.73	0.017506
989	ZK688.11	7.53	8.32	-1.73	0.017777
990	C04C11.8	3.66	4.45	-1.73	0.019426
991	trpl-4	2.8	3.59	-1.73	0.023445
992	T23G11.4	7.1	7.89	-1.73	0.023556
993	Y39B6A.13	6.94	7.72	-1.73	0.025519
994	W10D9.6	5.94	6.73	-1.73	0.02789
995	apc-11	7.37	8.16	-1.73	0.029132
996	Y111B2A.13	5.45	6.24	-1.73	0.032912
997	nhr-162	3.21	4	-1.73	0.033909
998	cbl-1	3.58	4.37	-1.73	0.039818
999	R186.8	6.19	6.98	-1.73	0.040212
1000	Y38H6C.23	3.53	4.32	-1.72	0.000376
1001	csq-1	9.57	10.35	-1.72	0.000417
1002	alh-12	7.07	7.85	-1.72	0.002147
1003	gfrp-1	4.93	5.72	-1.72	0.002265
1004	fbxa-108	5.63	6.4	-1.72	0.00247
1005	atad-3	7.17	7.95	-1.72	0.004216
1006	T08A9.13	4.85	5.63	-1.72	0.005981
1007	trd-1	6.2	6.98	-1.72	0.006663
1008	Y41E3.22	4.84	5.62	-1.72	0.007352
1009	vps-22	8.97	9.75	-1.72	0.007684
1010	rpl-14	9.76	10.55	-1.72	0.009336
1011	C25D7.15	3.05	3.83	-1.72	0.009437

1012	orc-4	5.55	6.33	-1.72	0.010148
1013	F48C1.5	8.05	8.83	-1.72	0.010981
1014	ZC262.9	2.81	3.59	-1.72	0.011999
1015	ZC262.9	2.81	3.59	-1.72	0.011999
1016	T28A8.5	6.01	6.79	-1.72	0.012169
1017	M18.3	6.56	7.34	-1.72	0.012265
1018	F22D3.5	7.11	7.89	-1.72	0.016096
1019	Y54G11A.17	7.08	7.86	-1.72	0.017524
1020	hap-1	4.97	5.75	-1.72	0.018203
1021	F48A9.5	1.39	2.17	-1.72	0.019938
1022	fbxa-98	3.17	3.95	-1.72	0.02073
1023	K12H4.5	5.84	6.63	-1.72	0.022661
1024	C08A9.10	6.47	7.25	-1.72	0.022866
1025	T06E6.10	6.55	7.33	-1.72	0.023567
1026	D2005.3	6.28	7.06	-1.72	0.025655
1027	fbxa-76	4.81	5.59	-1.72	0.028976
1028	mrpl-20	6.25	7.03	-1.72	0.031799
1029	B0495.5	5.34	6.12	-1.72	0.03339
1030	C07H6.14	2.7	3.48	-1.72	0.037466
1031	oac-34	3.07	3.86	-1.72	0.040213
1032	EEED8.3	6.39	7.17	-1.72	0.044179
1033	F26E4.2	3.22	4.01	-1.72	0.045915
1034	Y63D3A.7	6.67	7.46	-1.72	0.047378
1035	F44A2.10	1.37	2.14	-1.71	0.001968
1036	nuc-1	9.25	10.02	-1.71	0.001968
1037	mrpl-55	6.9	7.67	-1.71	0.003461
1038	ipla-7	7.34	8.11	-1.71	0.004839
1039	F40F12.7	5.35	6.13	-1.71	0.005154
1040	nuo-2	8.23	9.01	-1.71	0.006008
1041	flp-22	6.96	7.73	-1.71	0.007098
1042	C16C8.11	3.05	3.82	-1.71	0.011203
1043	mnr-1	6.37	7.14	-1.71	0.012081
1044	Y40B1B.7	8.24	9.01	-1.71	0.012693
1045	B0348.2	3.57	4.35	-1.71	0.014087
1046	F13B12.2	3.39	4.16	-1.71	0.014102

1047	B0410.3	7.52	8.29	-1.71	0.016393
1048	C29F7.2	8.41	9.18	-1.71	0.019178
1049	linc-14	2.87	3.65	-1.71	0.019602
1050	C24H11.5	7.53	8.3	-1.71	0.020342
1051	W09C3.4	5.55	6.33	-1.71	0.020475
1052	C47B2.2	8.28	9.05	-1.71	0.024992
1053	C50B8.4	4.19	4.97	-1.71	0.0277
1054	C47B2.9	6.51	7.29	-1.71	0.029446
1055	taf-13	8.36	9.14	-1.71	0.037444
1056	chil-23	2.85	3.63	-1.71	0.038008
1057	Y69A2AL.2	9.65	10.42	-1.71	0.03818
1058	mrps-23	6.03	6.81	-1.71	0.039072
1059	sodh-1	11.06	11.84	-1.71	0.045158
1060	rpb-10	8.54	9.31	-1.71	0.045993
1061	F09E5.3	8.76	9.53	-1.7	0.001614
1062	Y34F4.5	7.84	8.61	-1.7	0.004065
1063	fmo-1	5.24	6.01	-1.7	0.004316
1064	Y39G10AR.32	5.61	6.37	-1.7	0.004799
1065	F36H12.2	3.21	3.98	-1.7	0.005248
1066	T15B7.1	6.74	7.5	-1.7	0.007232
1067	F42A9.8	7.44	8.2	-1.7	0.009739
1068	C01H6.3	2.37	3.14	-1.7	0.011764
1069	mrpl-49	6.32	7.09	-1.7	0.016325
1070	rpl-39	11.02	11.78	-1.7	0.018129
1071	dhs-3	4.91	5.68	-1.7	0.019224
1072	ZK686.1	8.43	9.2	-1.7	0.030286
1073	F17H10.2	7.95	8.72	-1.7	0.030646
1074	ddp-1	8.69	9.45	-1.7	0.031572
1075	dhs-18	7.5	8.26	-1.7	0.032856
1076	acs-21	3.85	4.61	-1.7	0.036923
1077	R151.6	8.16	8.93	-1.7	0.037435
1078	emb-1	7.59	8.35	-1.7	0.039704
1079	T10F2.2	7.16	7.92	-1.7	0.040335
1080	T07A5.5	8.67	9.44	-1.7	0.045317
1081	T17A3.2	4.67	5.43	-1.7	0.046291

1082	C23H3.2	7.37	8.12	-1.69	0.00009
1083	Y49E10.16	8.83	9.59	-1.69	0.000329
1084	twk-26	5.07	5.82	-1.69	0.000494
1085	fbxa-82	3.29	4.05	-1.69	0.004638
1086	D2096.13	1.39	2.15	-1.69	0.004749
1087	nduf-7	8.94	9.7	-1.69	0.004772
1088	E04F6.4	4.78	5.54	-1.69	0.005045
1089	D2096.1	4.19	4.95	-1.69	0.005254
1090	ugt-31	3.9	4.65	-1.69	0.005261
1091	mrps-22	6.15	6.91	-1.69	0.005678
1092	ZK637.12	2.82	3.58	-1.69	0.006396
1093	H19N07.3	7.8	8.56	-1.69	0.007332
1094	cyp-37B1	6.12	6.88	-1.69	0.007835
1095	C49A9.10	4.55	5.3	-1.69	0.007936
1096	C10B5.1	5.01	5.76	-1.69	0.007977
1097	Y69A2AR.25	2.17	2.92	-1.69	0.008604
1098	K07F5.16	5.95	6.71	-1.69	0.008665
1099	ggtb-1	6.08	6.83	-1.69	0.008776
1100	Y47H10A.4	5.23	5.99	-1.69	0.010096
1101	mrps-2	8.04	8.79	-1.69	0.010841
1102	C34B2.8	8.84	9.6	-1.69	0.01087
1103	nhr-36	4.3	5.06	-1.69	0.011531
1104	sod-2	7.22	7.98	-1.69	0.012324
1105	F32B4.5	6.71	7.47	-1.69	0.013535
1106	F47B8.3	4.74	5.5	-1.69	0.015575
1107	T01H8.2	4.82	5.58	-1.69	0.018711
1108	C16A3.2	6.43	7.19	-1.69	0.019281
1109	C25E10.8	4.44	5.2	-1.69	0.019525
1110	ptr-14	4.5	5.26	-1.69	0.022831
1111	dhfr-1	7.73	8.49	-1.69	0.023541
1112	eif-3.F	9.05	9.81	-1.69	0.024086
1113	C50B6.9	3.98	4.73	-1.69	0.026217
1114	Y54E5A.5	7.2	7.97	-1.69	0.029234
1115	dhs-11	5.69	6.45	-1.69	0.035573
1116	mrpl-51	8.59	9.34	-1.69	0.037386

1117	B0563.5	3.28	4.04	-1.69	0.045173
1118	best-5	4.08	4.84	-1.68	0.002681
1119	T08B1.4	6.79	7.54	-1.68	0.002681
1120	F49C12.14	2.42	3.17	-1.68	0.002701
1121	ZK632.12	5.3	6.04	-1.68	0.004409
1122	trpp-4	6.1	6.85	-1.68	0.005029
1123	F16H11.1	3.37	4.11	-1.68	0.005043
1124	rpia-1	9.62	10.37	-1.68	0.006224
1125	T27A3.6	6.55	7.3	-1.68	0.006533
1126	T09A5.5	6.63	7.38	-1.68	0.008542
1127	nola-3	10.32	11.07	-1.68	0.01052
1128	Y95D11A.1	6.72	7.47	-1.68	0.01081
1129	K02D10.4	6.29	7.04	-1.68	0.013571
1130	Y46G5A.20	6.08	6.82	-1.68	0.017689
1131	asg-1	8.51	9.26	-1.68	0.02468
1132	F23C8.3	3.69	4.44	-1.68	0.030109
1133	Y119C1B.6	6.83	7.58	-1.68	0.031594
1134	E02H1.2	6.85	7.6	-1.68	0.032766
1135	F58H1.8	4.72	5.47	-1.68	0.034501
1136	nxt-1	6.55	7.29	-1.68	0.040778
1137	F30A10.9	7.71	8.46	-1.68	0.040961
1138	col-139	8.13	8.88	-1.68	0.04478
1139	T06A10.3	7.51	8.25	-1.68	0.047622
1140	T19E7.22	2.89	3.63	-1.67	0.000313
1141	C39D10.11	5.56	6.3	-1.67	0.000816
1142	col-181	9.6	10.34	-1.67	0.00096
1143	Y54H5A.2	7.8	8.53	-1.67	0.00303
1144	ZK1320.9	7.73	8.47	-1.67	0.00437
1145	ets-10	2.87	3.61	-1.67	0.00519
1146	M05D6.6	5.39	6.14	-1.67	0.006646
1147	F46F11.10	4.95	5.69	-1.67	0.011927
1148	Y106G6H.8	7.25	7.99	-1.67	0.012861
1149	C34E11.4	2.85	3.59	-1.67	0.013246
1150	F38H4.10	5.96	6.71	-1.67	0.013577
1151	T24C2.5	6.98	7.73	-1.67	0.013586

1152	fbxa-91	2.61	3.35	-1.67	0.022013
1153	F56D5.6	6.18	6.92	-1.67	0.024742
1154	dnj-26	4.95	5.68	-1.67	0.025137
1155	Y37E11B.6	5.64	6.38	-1.67	0.029749
1156	F46B6.9	3.37	4.11	-1.67	0.031535
1157	dnc-3	6.68	7.42	-1.67	0.032423
1158	W06G6.9	2.49	3.23	-1.67	0.04399
1159	clcc-50	8.66	9.39	-1.66	0.000088
1160	fat-3	10.2	10.93	-1.66	0.000543
1161	ugt-61	3.69	4.42	-1.66	0.002729
1162	bca-2	7.39	8.12	-1.66	0.004011
1163	gst-43	6.15	6.88	-1.66	0.004192
1164	B0228.1	6.37	7.1	-1.66	0.006323
1165	maoc-1	5.76	6.5	-1.66	0.009343
1166	T25F10.1	4.03	4.76	-1.66	0.012044
1167	C27B7.2	6.9	7.63	-1.66	0.012547
1168	T05F1.11	4.75	5.48	-1.66	0.014555
1169	F40H3.2	2.52	3.25	-1.66	0.01476
1170	W09B6.4	6.59	7.32	-1.66	0.015563
1171	Y97E10AL.3	6.22	6.96	-1.66	0.015707
1172	C04A11.5	3.51	4.24	-1.66	0.017319
1173	R12C12.1	7.47	8.19	-1.66	0.017761
1174	nlp-41	5.64	6.37	-1.66	0.017877
1175	R07E5.11	5.52	6.25	-1.66	0.019286
1176	flu-2	5.44	6.17	-1.66	0.021217
1177	ugt-6	4.08	4.81	-1.66	0.023192
1178	mxl-1	7.31	8.04	-1.66	0.023685
1179	tomm-7	9.67	10.4	-1.66	0.028366
1180	marb-1	7.13	7.86	-1.66	0.029814
1181	F39H2.3	7.71	8.44	-1.66	0.029945
1182	fmo-4	5.13	5.86	-1.66	0.030252
1183	nlp-36	8.2	8.93	-1.66	0.035821
1184	cyn-12	7.64	8.37	-1.66	0.038382
1185	F48E3.2	3.83	4.57	-1.66	0.038426
1186	F58B6.7	1.55	2.28	-1.66	0.043945

1187	mlc-7	7.93	8.66	-1.66	0.046276
1188	bcs-1	7.75	8.47	-1.65	0.000801
1189	F56A8.5	7.06	7.78	-1.65	0.000957
1190	nhr-103	5.77	6.5	-1.65	0.001021
1191	Y4C6B.7	3.99	4.71	-1.65	0.003644
1192	F55C12.6	1.27	1.99	-1.65	0.003787
1193	R05G6.5	4.12	4.84	-1.65	0.003916
1194	cyp-32A1	4.15	4.87	-1.65	0.004187
1195	C16A11.10	5.83	6.55	-1.65	0.006073
1196	ard-1	8.73	9.46	-1.65	0.007459
1197	tut-2	6.45	7.17	-1.65	0.009552
1198	Y82E9BR.13	3.94	4.66	-1.65	0.009679
1199	T23B5.4	6.11	6.83	-1.65	0.01033
1200	Y41C4A.8	4.79	5.52	-1.65	0.011064
1201	ech-5	6.69	7.41	-1.65	0.011935
1202	best-1	4.1	4.83	-1.65	0.01236
1203	emc-3	8.05	8.78	-1.65	0.012739
1204	F23C11.2	2.1	2.83	-1.65	0.01296
1205	srbc-8	1.32	2.04	-1.65	0.013743
1206	Y105C5A.1268	3.38	4.1	-1.65	0.014568
1207	M110.3	6.82	7.55	-1.65	0.016066
1208	C16C8.5	5.34	6.06	-1.65	0.018176
1209	T09A5.15	2.67	3.39	-1.65	0.019933
1210	arl-5	6.97	7.69	-1.65	0.021107
1211	C41D11.9	4.95	5.67	-1.65	0.022948
1212	T14B4.2	7.79	8.51	-1.65	0.023256
1213	mrpl-15	7.37	8.09	-1.65	0.02625
1214	skr-19	7.49	8.22	-1.65	0.033384
1215	srbc-20	3.01	3.74	-1.65	0.033753
1216	F17E9.4	7	7.72	-1.65	0.037179
1217	syx-7	6.42	7.14	-1.65	0.040756
1218	lmtr-2	8.12	8.84	-1.65	0.042068
1219	F38E11.21	2.63	3.35	-1.65	0.042178
1220	pot-1	5.45	6.17	-1.65	0.04393
1221	rpl-29	5.14	5.87	-1.65	0.049683

1222	C38C3.10	2.91	3.62	-1.64	0.000672
1223	T05E12.6	5.47	6.18	-1.64	0.000881
1224	acs-11	7.3	8.02	-1.64	0.003195
1225	mlt-4	3.38	4.09	-1.64	0.003294
1226	eng-1	7.18	7.89	-1.64	0.003785
1227	Y54G11A.7	5.08	5.79	-1.64	0.009024
1228	ZK669.3	5.74	6.46	-1.64	0.010193
1229	fbxc-54	3.81	4.52	-1.64	0.010265
1230	C42C1.13	4.27	4.98	-1.64	0.012199
1231	jtr-1	7.5	8.21	-1.64	0.012517
1232	Y51H4A.15	7.69	8.41	-1.64	0.016844
1233	glod-4	6.78	7.49	-1.64	0.01877
1234	mrpl-12	6.85	7.56	-1.64	0.021199
1235	ins-27	5.99	6.71	-1.64	0.021426
1236	F41E7.7	3.71	4.43	-1.64	0.022493
1237	algn-2	5.63	6.34	-1.64	0.023701
1238	dhs-6	6.45	7.16	-1.64	0.024876
1239	nduf-6	7.36	8.08	-1.64	0.025269
1240	C01H6.4	3.38	4.09	-1.64	0.026246
1241	prx-12	4.05	4.77	-1.64	0.027381
1242	ech-2	6.81	7.52	-1.64	0.027958
1243	ttr-17	7.84	8.56	-1.64	0.029968
1244	Y57G7A.1	3.69	4.4	-1.64	0.03481
1245	F22D6.18	1.21	1.92	-1.64	0.035897
1246	C02F5.13	5.98	6.7	-1.64	0.036997
1247	clcc-65	8.47	9.18	-1.63	0.000234
1248	T28H10.1	6.88	7.58	-1.63	0.000604
1249	C05D2.17	5.21	5.92	-1.63	0.001275
1250	K11D12.12	6.7	7.41	-1.63	0.00219
1251	T09A12.5	9.46	10.16	-1.63	0.003498
1252	acox-5	4.26	4.97	-1.63	0.00396
1253	flp-12	6.16	6.87	-1.63	0.004867
1254	Y45F10D.10	5.67	6.38	-1.63	0.005513
1255	cisd-3.1	7.58	8.28	-1.63	0.007115
1256	C35B8.3	6.3	7	-1.63	0.007506

1257	F49F1.5	5.41	6.11	-1.63	0.008376
1258	rla-2	9.63	10.34	-1.63	0.011381
1259	nep-4	3.41	4.11	-1.63	0.012323
1260	wdr-12	7.37	8.08	-1.63	0.012381
1261	F57F5.1	6.24	6.94	-1.63	0.012598
1262	F38A6.5	5.56	6.27	-1.63	0.013223
1263	F28B3.6	7.84	8.55	-1.63	0.017717
1264	T20D3.6	7.83	8.54	-1.63	0.019581
1265	F11A5.15	2.61	3.31	-1.63	0.019631
1266	T01G1.4	7.2	7.91	-1.63	0.020052
1267	Y71H2AM.4	9.18	9.88	-1.63	0.020642
1268	ugt-60	4.57	5.27	-1.63	0.021627
1269	Y47H10A.3	4.35	5.05	-1.63	0.024928
1270	VB0395L.1	3.5	4.21	-1.63	0.025056
1271	sucg-1	7.86	8.56	-1.63	0.025237
1272	F56A8.9	4.33	5.03	-1.63	0.026175
1273	F58A4.6	6.19	6.9	-1.63	0.026457
1274	F25B4.4	6.75	7.46	-1.63	0.026699
1275	F40F8.1	6.18	6.89	-1.63	0.028699
1276	C32D5.8	7.77	8.48	-1.63	0.029613
1277	nhr-69	6.7	7.4	-1.63	0.029941
1278	F07A11.5	5.77	6.48	-1.63	0.034083
1279	math-35	4.69	5.39	-1.63	0.035118
1280	W03D2.9	4.11	4.81	-1.63	0.04368
1281	ugt-23	7.06	7.76	-1.62	0.000281
1282	spp-5	11.95	12.65	-1.62	0.000296
1283	ugt-49	5.82	6.51	-1.62	0.000532
1284	chil-8	1.53	2.22	-1.62	0.001525
1285	jmjd-5	5.08	5.78	-1.62	0.00189
1286	moma-1	8.78	9.48	-1.62	0.002113
1287	C34F11.8	4.89	5.59	-1.62	0.002376
1288	T09F3.4	6.28	6.97	-1.62	0.003294
1289	ZK688.9	7.04	7.74	-1.62	0.004094
1290	F26F4.12	7.5	8.2	-1.62	0.0052
1291	dhs-30	4.64	5.33	-1.62	0.006559

1292	C28G1.6	4.24	4.94	-1.62	0.006935
1293	C16C10.8	7.08	7.78	-1.62	0.009593
1294	phf-30	7.35	8.05	-1.62	0.010369
1295	F55G1.5	5.76	6.46	-1.62	0.010892
1296	F35G12.7	6.6	7.3	-1.62	0.013202
1297	F18A11.3	5.98	6.68	-1.62	0.014116
1298	F27D4.8	6.41	7.11	-1.62	0.015986
1299	rpb-6	6.64	7.34	-1.62	0.016024
1300	C11D2.7	7.21	7.91	-1.62	0.017072
1301	K07F5.15	8.49	9.19	-1.62	0.019613
1302	F09C6.12	5.26	5.96	-1.62	0.02292
1303	cyn-1	8.22	8.92	-1.62	0.023243
1304	ugtp-1	6.41	7.1	-1.62	0.023374
1305	Y66D12A.9	5.87	6.56	-1.62	0.026417
1306	coq-5	7.13	7.83	-1.62	0.026962
1307	dpy-31	5.77	6.47	-1.62	0.029899
1308	Y43F8A.1	5.19	5.89	-1.62	0.037441
1309	F53A9.8	6.34	7.03	-1.62	0.03989
1310	C29A12.1	7.34	8.03	-1.62	0.046662
1311	F38B6.4	3.72	4.41	-1.62	0.046763
1312	fbxa-141	1.93	2.63	-1.62	0.047812
1313	math-45	2.53	3.22	-1.61	0.000198
1314	clcc-229	2.24	2.93	-1.61	0.000221
1315	cpz-2	7.57	8.26	-1.61	0.000347
1316	glr-1	3.9	4.58	-1.61	0.000857
1317	asm-3	5.46	6.15	-1.61	0.001337
1318	C13F10.5	7.08	7.77	-1.61	0.004124
1319	R01B10.4	6.69	7.38	-1.61	0.005961
1320	mif-3	7.04	7.73	-1.61	0.007841
1321	K02B2.6	1.32	2.01	-1.61	0.008138
1322	nhr-184	3.72	4.41	-1.61	0.010226
1323	Y26E6A.3	5.3	5.99	-1.61	0.010827
1324	Y95D11A.3	6.77	7.45	-1.61	0.010957
1325	C27D6.12	4.44	5.12	-1.61	0.0122
1326	algn-7	6.5	7.19	-1.61	0.012235

1327	D1054.1	5.19	5.88	-1.61	0.014477
1328	dohh-1	7.18	7.86	-1.61	0.014567
1329	D2007.1	6.77	7.46	-1.61	0.016491
1330	asb-1	9.1	9.78	-1.61	0.017401
1331	E02H4.4	4.9	5.59	-1.61	0.019044
1332	Y71F9B.2	5.83	6.52	-1.61	0.019756
1333	F19C6.8	4.38	5.07	-1.61	0.020538
1334	T05H4.15	2.12	2.8	-1.61	0.020806
1335	pinn-1	6.62	7.31	-1.61	0.020888
1336	fbxa-106	4.94	5.63	-1.61	0.023269
1337	dnj-16	7.11	7.79	-1.61	0.023543
1338	rhr-2	2.69	3.38	-1.61	0.023992
1339	R02D3.1	7.71	8.39	-1.61	0.024462
1340	R151.1	3.31	4	-1.61	0.027831
1341	nubp-1	6.54	7.23	-1.61	0.029385
1342	pho-7	3.08	3.77	-1.61	0.031864
1343	T24H7.3	7.74	8.43	-1.61	0.032889
1344	Y47G6A.9	5.98	6.66	-1.61	0.034853
1345	F58G6.3	4.23	4.91	-1.61	0.035432
1346	C01A2.2	4.89	5.58	-1.61	0.041404
1347	npr-20	4.93	5.62	-1.61	0.045955
1348	C49A9.3	3.83	4.51	-1.61	0.048166
1349	F20A1.6	4.5	5.19	-1.6	0.000138
1350	F46C5.10	5.74	6.41	-1.6	0.00044
1351	F40F8.4	5.39	6.07	-1.6	0.001111
1352	col-153	4.71	5.4	-1.6	0.0015
1353	K10D3.6	5	5.69	-1.6	0.002779
1354	col-118	6.42	7.1	-1.6	0.00283
1355	tmbi-4	8.77	9.45	-1.6	0.003198
1356	E02H9.2	4.61	5.3	-1.6	0.003475
1357	homt-1	7.55	8.23	-1.6	0.004219
1358	dph-1	7.96	8.64	-1.6	0.004296
1359	del-6	7.8	8.48	-1.6	0.004789
1360	tbcc-1	6.85	7.53	-1.6	0.005874
1361	linc-61	1.9	2.58	-1.6	0.007083

1362	kel-3	6.71	7.39	-1.6	0.00944
1363	M18.6	6.62	7.3	-1.6	0.010505
1364	F23B12.4	8.89	9.57	-1.6	0.012798
1365	dhp-2	5.57	6.24	-1.6	0.014216
1366	lpd-5	6.23	6.91	-1.6	0.014477
1367	F53F8.4	6.63	7.31	-1.6	0.019568
1368	W06G6.10	3.13	3.81	-1.6	0.021709
1369	dlc-2	3.17	3.85	-1.6	0.024402
1370	clec-56	5.7	6.37	-1.6	0.024791
1371	C48B4.6	7.26	7.94	-1.6	0.026198
1372	cyn-3	9.59	10.27	-1.6	0.026755
1373	nuo-3	8.86	9.54	-1.6	0.02688
1374	F22E12.3	2.33	3.01	-1.6	0.030558
1375	trm-1	6.73	7.4	-1.6	0.030562
1376	R12C12.9	4.62	5.3	-1.6	0.032399
1377	F08G5.15	2.9	3.57	-1.6	0.034188
1378	C08B6.8	6.52	7.2	-1.6	0.036308
1379	F44E2.9	5.51	6.19	-1.6	0.040333
1380	D1086.7	7.35	8.02	-1.6	0.045134
1381	C06A12.3	5.18	5.85	-1.6	0.045697
1382	F57B10.5	8.1	8.79	-1.6	0.046977
1383	Y113G7A.16	1.46	2.14	-1.6	0.0488
1384	phip-1	6.25	6.94	-1.6	0.049338
1385	T28D6.10	11.01	11.68	-1.6	0.049923
1386	fbxa-4	4.39	5.06	-1.59	0.003848
1387	Y49F6B.2	6.7	7.37	-1.59	0.005013
1388	got-2.2	9.93	10.59	-1.59	0.005043
1389	C56A3.5	8.22	8.89	-1.59	0.005964
1390	F15D4.2	7.18	7.85	-1.59	0.007377
1391	cisd-3.2	8.41	9.08	-1.59	0.007898
1392	frpr-11	4.68	5.36	-1.59	0.008419
1393	C39H7.4	6.03	6.7	-1.59	0.011049
1394	lin-52	7.22	7.88	-1.59	0.011443
1395	math-22	3.3	3.97	-1.59	0.01293
1396	pmt-2	9.49	10.16	-1.59	0.01496

1397	mrpl-41	7.43	8.09	-1.59	0.015309
1398	Y37F4.8	2.48	3.15	-1.59	0.016015
1399	cnb-1	7.49	8.16	-1.59	0.016438
1400	mrps-6	8.27	8.94	-1.59	0.017631
1401	Y69A2AR.21	8.52	9.19	-1.59	0.02055
1402	nhr-136	5.23	5.9	-1.59	0.021077
1403	D1007.8	5.15	5.82	-1.59	0.021159
1404	ZC434.7	5.76	6.43	-1.59	0.022687
1405	R07E5.13	6.89	7.56	-1.59	0.022885
1406	oac-50	3.82	4.49	-1.59	0.023264
1407	fbxa-10	2.84	3.51	-1.59	0.02342
1408	F56C9.7	6.39	7.06	-1.59	0.023719
1409	C48B4.11	7.9	8.57	-1.59	0.026993
1410	dhs-19	5.49	6.15	-1.59	0.027249
1411	B0035.3	7.09	7.76	-1.59	0.032463
1412	txl-1	8.79	9.45	-1.59	0.035232
1413	C51E3.6	4.22	4.9	-1.59	0.03663
1414	ZC239.5	3.71	4.38	-1.59	0.040423
1415	kgb-2	4.82	5.49	-1.59	0.040568
1416	C50F4.1	7.73	8.38	-1.58	0.000607
1417	F55A11.6	6.25	6.91	-1.58	0.001028
1418	best-21	6	6.66	-1.58	0.001388
1419	C09D4.2	8.39	9.05	-1.58	0.001548
1420	Y54G2A.36	7.48	8.14	-1.58	0.002147
1421	ekl-1	7.41	8.08	-1.58	0.002851
1422	upb-1	9.87	10.53	-1.58	0.004586
1423	fars-3	7.91	8.57	-1.58	0.004885
1424	R04A9.9	2.86	3.52	-1.58	0.004975
1425	mec-15	7.3	7.96	-1.58	0.00896
1426	Y37E3.8	10.93	11.59	-1.58	0.009915
1427	Y57E12AM.1	8.77	9.43	-1.58	0.010353
1428	ZK1098.4	6.72	7.37	-1.58	0.010782
1429	K03A11.5	6.17	6.83	-1.58	0.010956
1430	D2023.4	5.97	6.63	-1.58	0.013497
1431	lipl-1	5.59	6.24	-1.58	0.013741

1432	ooc-5	7.34	8	-1.58	0.013753
1433	mboa-2	7.14	7.8	-1.58	0.016774
1434	Y18H1A.4	5.89	6.55	-1.58	0.018649
1435	B0361.6	6.66	7.32	-1.58	0.019134
1436	btb-19	6.52	7.18	-1.58	0.020059
1437	rps-28	11.33	11.99	-1.58	0.021317
1438	F37B12.3	8.84	9.5	-1.58	0.022278
1439	Y47G6A.22	5.72	6.38	-1.58	0.023028
1440	W05H7.2	4.29	4.95	-1.58	0.030916
1441	B0207.6	7.55	8.21	-1.58	0.035365
1442	C46C2.7	4.82	5.48	-1.58	0.035602
1443	lips-16	3.22	3.89	-1.58	0.043478
1444	add-2	5.12	5.77	-1.58	0.046725
1445	Y54E10BR.2	6.52	7.18	-1.58	0.047808
1446	F52C6.3	4.73	5.39	-1.57	0.001421
1447	cri-2	5.51	6.16	-1.57	0.002346
1448	Y54E10BR.4	8.02	8.67	-1.57	0.002448
1449	Y17D7B.4	4.26	4.91	-1.57	0.002623
1450	Y73F8A.14	1.14	1.79	-1.57	0.004286
1451	tсен-34	8.51	9.16	-1.57	0.004461
1452	R74.7	6.91	7.56	-1.57	0.007038
1453	F31E3.6	10.31	10.96	-1.57	0.007933
1454	dmsr-6	4.46	5.11	-1.57	0.010378
1455	clik-1	9.73	10.38	-1.57	0.010879
1456	C05C12.6	3.58	4.22	-1.57	0.011292
1457	F08A7.1	5.37	6.02	-1.57	0.011532
1458	nhr-193	4.45	5.1	-1.57	0.012014
1459	sod-1	8.62	9.26	-1.57	0.012644
1460	F48C1.6	7.53	8.18	-1.57	0.01459
1461	rab-39	8.3	8.95	-1.57	0.015273
1462	grl-11	3.34	3.99	-1.57	0.015692
1463	T14B4.3	5.79	6.44	-1.57	0.016474
1464	Y71H2AL.2	5.17	5.82	-1.57	0.017889
1465	F56B3.11	7.57	8.22	-1.57	0.018932
1466	H39E20.1	3.67	4.32	-1.57	0.019098

1467	csn-3	7.24	7.89	-1.57	0.020627
1468	Y74C10AL.2	7.76	8.41	-1.57	0.027415
1469	fbxa-206	4.41	5.06	-1.57	0.028235
1470	F55H2.5	5.49	6.13	-1.57	0.03063
1471	W10G11.4	2.2	2.85	-1.57	0.031192
1472	dhs-21	3.94	4.59	-1.57	0.032082
1473	ZK265.11	10.76	11.41	-1.57	0.033056
1474	gcl-1	4.71	5.36	-1.57	0.035945
1475	R144.12	6.33	6.98	-1.57	0.03772
1476	pix-1	4.45	5.11	-1.57	0.043291
1477	ttr-35	6.22	6.87	-1.57	0.044002
1478	K08C7.4	3.49	4.14	-1.57	0.044297
1479	Y48C3A.3	6.08	6.72	-1.56	0.001319
1480	ulp-3	7.78	8.41	-1.56	0.00132
1481	Y102A5C.2	5.77	6.41	-1.56	0.002862
1482	cytb-5.2	9.34	9.98	-1.56	0.004447
1483	hus-1	6.62	7.27	-1.56	0.00624
1484	T15H9.2	5.64	6.28	-1.56	0.007485
1485	ZK265.6	8.24	8.89	-1.56	0.007885
1486	T07D10.3	5.33	5.97	-1.56	0.009293
1487	fbxa-210	6.76	7.4	-1.56	0.009633
1488	copz-1	7.78	8.42	-1.56	0.010465
1489	rpl-32	10.63	11.28	-1.56	0.01166
1490	F26F4.9	6.18	6.82	-1.56	0.011802
1491	coq-2	6.74	7.38	-1.56	0.013138
1492	pst-2	4.4	5.04	-1.56	0.016446
1493	bath-24	3.92	4.56	-1.56	0.018826
1494	K05C4.5	6.13	6.77	-1.56	0.018929
1495	Y47G6A.7	7.17	7.81	-1.56	0.020088
1496	nspc-6	11	11.64	-1.56	0.022463
1497	nspc-6	11	11.64	-1.56	0.022463
1498	mnm-2	5.12	5.76	-1.56	0.023265
1499	R107.2	6.52	7.16	-1.56	0.023416
1500	F55F8.3	7.62	8.26	-1.56	0.023478
1501	ska-1	6.08	6.72	-1.56	0.024008

1502	C34B2.10	7.45	8.09	-1.56	0.029146
1503	gana-1	5.1	5.74	-1.56	0.029811
1504	his-37	8.66	9.3	-1.56	0.030564
1505	T28A8.8	4.84	5.48	-1.56	0.031655
1506	K03D3.2	2.64	3.28	-1.56	0.032313
1507	F40F8.3	6.65	7.29	-1.56	0.033633
1508	gop-2	6.14	6.79	-1.56	0.034228
1509	ufc-1	8.11	8.75	-1.56	0.03667
1510	VB0393L.2	7.74	8.38	-1.56	0.037897
1511	VB0393L.2	7.74	8.38	-1.56	0.037897
1512	C25H3.17	6.5	7.14	-1.56	0.038415
1513	Y47G6A.34	2.37	3.01	-1.56	0.040074
1514	Y54G2A.16	4.18	4.82	-1.56	0.043688
1515	F56H9.9	2.25	2.89	-1.56	0.046537
1516	T05E7.4	5.82	6.45	-1.55	0.000884
1517	misc-1	6.55	7.18	-1.55	0.001072
1518	cox-11	7.07	7.7	-1.55	0.00201
1519	B0304.4	7.29	7.92	-1.55	0.002205
1520	C16A3.5	7.01	7.65	-1.55	0.00223
1521	cco-1	8.85	9.49	-1.55	0.006264
1522	Y24D9A.8	8.18	8.82	-1.55	0.006659
1523	exos-7	7.45	8.09	-1.55	0.00698
1524	taco-1	6.49	7.12	-1.55	0.007248
1525	alh-9	5.89	6.52	-1.55	0.008763
1526	gop-3	8.26	8.89	-1.55	0.010012
1527	C44B7.5	8.45	9.08	-1.55	0.010247
1528	nhr-286	5.46	6.09	-1.55	0.011285
1529	C01H6.6	5.38	6.01	-1.55	0.011685
1530	C10C6.11	4.88	5.51	-1.55	0.014917
1531	fbxa-3	2.85	3.48	-1.55	0.015101
1532	F27D4.7	8.53	9.16	-1.55	0.015653
1533	Y56A3A.19	7.89	8.52	-1.55	0.016094
1534	rpb-4	7.52	8.15	-1.55	0.016317
1535	Y42G9A.2	5.11	5.75	-1.55	0.016421
1536	B0432.10	6.84	7.47	-1.55	0.016917

1537	C33F10.14	8.69	9.32	-1.55	0.01749
1538	ZC239.17	4.96	5.6	-1.55	0.017716
1539	fog-2	5.47	6.1	-1.55	0.019758
1540	mrps-12	7.43	8.06	-1.55	0.019838
1541	K09C4.4	5.48	6.11	-1.55	0.021273
1542	F42A6.6	5.57	6.21	-1.55	0.021283
1543	C43E11.9	6.58	7.21	-1.55	0.025363
1544	C25F6.1	5.93	6.56	-1.55	0.025884
1545	Y43F8C.13	4.17	4.8	-1.55	0.027955
1546	F56C11.3	6.95	7.58	-1.55	0.028373
1547	ttr-16	9.74	10.37	-1.55	0.028591
1548	nstp-1	6.05	6.68	-1.55	0.028605
1549	qdpr-1	7.6	8.23	-1.55	0.034725
1550	F14F11.2	8.18	8.82	-1.55	0.036337
1551	fbxa-79	4.01	4.64	-1.55	0.036668
1552	ZK1127.3	7.61	8.25	-1.55	0.046021
1553	K09G1.1	5.9	6.54	-1.55	0.046642
1554	Y14H12A.2	2.62	3.25	-1.55	0.049966
1555	F46B6.4	5.84	6.47	-1.54	0.00058
1556	F28F8.9	6.53	7.15	-1.54	0.001716
1557	capa-1	7.21	7.83	-1.54	0.001888
1558	C17H12.4	4.37	5	-1.54	0.003068
1559	nhr-143	5.54	6.16	-1.54	0.003254
1560	abts-2	5.18	5.8	-1.54	0.005218
1561	grd-4	1.85	2.47	-1.54	0.005599
1562	T25G3.3	8.97	9.59	-1.54	0.006987
1563	bath-4	3.44	4.06	-1.54	0.007772
1564	mec-3	1.97	2.59	-1.54	0.008251
1565	F34D10.9	2.85	3.47	-1.54	0.008985
1566	M04B2.2	6.83	7.45	-1.54	0.009949
1567	imp-3	7.68	8.3	-1.54	0.01022
1568	B0250.5	8.34	8.97	-1.54	0.010561
1569	ric-19	4.96	5.58	-1.54	0.013875
1570	ZK930.2	7.23	7.86	-1.54	0.014753
1571	tag-267	7.18	7.8	-1.54	0.015131

1572	Y53F4B.51	4.32	4.94	-1.54	0.01526
1573	rpl-22	10.28	10.9	-1.54	0.015587
1574	ndx-9	7.51	8.13	-1.54	0.016614
1575	Y4C6B.2	3.13	3.75	-1.54	0.017248
1576	B0304.2	8.27	8.9	-1.54	0.017515
1577	R53.4	10.37	10.99	-1.54	0.01823
1578	T13F2.2	8.46	9.08	-1.54	0.018898
1579	lid-1	6.61	7.23	-1.54	0.020041
1580	psf-1	7.28	7.89	-1.54	0.021352
1581	fbxa-27	2.38	3	-1.54	0.022891
1582	F07F6.7	3.37	3.99	-1.54	0.023072
1583	F54D5.11	6.81	7.43	-1.54	0.02485
1584	C10C6.7	3.14	3.76	-1.54	0.02489
1585	srp-7	7.58	8.21	-1.54	0.024974
1586	F56C4.4	3.37	3.99	-1.54	0.025053
1587	tag-281	6.21	6.84	-1.54	0.028667
1588	pes-23	5.78	6.4	-1.54	0.028966
1589	seld-1	5.24	5.86	-1.54	0.031106
1590	C16C8.4	6.22	6.85	-1.54	0.036075
1591	rnp-2	7.58	8.2	-1.54	0.0369
1592	gly-6	7.34	7.97	-1.54	0.037527
1593	F22D3.6	3.6	4.22	-1.54	0.038329
1594	ugt-43	1.84	2.46	-1.54	0.038343
1595	cept-1	6.35	6.98	-1.54	0.046172
1596	Y39H10B.2	4.67	5.29	-1.53	0.000613
1597	pstk-1	4.94	5.55	-1.53	0.001059
1598	nlp-20	7.59	8.21	-1.53	0.001518
1599	ZK1058.5	6.33	6.94	-1.53	0.001535
1600	mrpl-14	8	8.61	-1.53	0.001792
1601	C35D10.6	8.59	9.2	-1.53	0.002212
1602	Y41E3.6	2.27	2.88	-1.53	0.004172
1603	Y53G8B.1	4.13	4.74	-1.53	0.004649
1604	K11D12.8	3.55	4.16	-1.53	0.006281
1605	pbo-1	7.18	7.79	-1.53	0.006652
1606	cyp-32B1	5.85	6.46	-1.53	0.007309

1607	B0361.3	6.94	7.55	-1.53	0.007364
1608	elpc-3	6.59	7.2	-1.53	0.007587
1609	F48G7.2	3.97	4.58	-1.53	0.008057
1610	tomm-20	7.75	8.36	-1.53	0.00864
1611	ttm-2	5.42	6.03	-1.53	0.009757
1612	taf-11.2	5.05	5.66	-1.53	0.009974
1613	flp-27	7.72	8.33	-1.53	0.011144
1614	K07C11.4	7.51	8.12	-1.53	0.011331
1615	cogc-6	6.48	7.1	-1.53	0.01361
1616	K08E4.6	7.44	8.05	-1.53	0.014258
1617	rpl-38	10.72	11.34	-1.53	0.014759
1618	Y73E7A.6	8.8	9.41	-1.53	0.015434
1619	T27A8.7	1.44	2.06	-1.53	0.016527
1620	hmg-5	7.76	8.37	-1.53	0.017019
1621	R02F2.9	7.27	7.89	-1.53	0.018468
1622	W02B12.1	5.8	6.41	-1.53	0.018617
1623	eif-3.H	8.04	8.65	-1.53	0.01957
1624	twk-18	7.24	7.85	-1.53	0.019603
1625	R119.3	7.27	7.88	-1.53	0.022915
1626	Y71H2AM.5	8.82	9.43	-1.53	0.0242
1627	glrx-22	6.57	7.19	-1.53	0.027881
1628	Y53F4B.14	5.65	6.26	-1.53	0.032034
1629	R144.13	7.87	8.49	-1.53	0.032087
1630	Y87G2A.13	7.57	8.18	-1.53	0.033729
1631	Y71F9B.9	4.78	5.39	-1.53	0.036321
1632	F46B6.15	2.47	3.08	-1.53	0.036884
1633	F10E9.4	6.55	7.16	-1.53	0.037963
1634	C50D2.5	3.83	4.45	-1.53	0.038282
1635	mrpl-4	6.48	7.09	-1.53	0.049426
1636	F38B2.4	5.66	6.27	-1.52	0.000522
1637	F21D5.5	6.47	7.07	-1.52	0.00079
1638	K09E9.1	5.49	6.1	-1.52	0.00146
1639	Y17G9A.2	1.62	2.22	-1.52	0.002471
1640	C01B10.47	2.23	2.83	-1.52	0.002959
1641	C24F3.2	5.96	6.57	-1.52	0.003045

1642	Y105E8B.6	5.41	6.02	-1.52	0.003114
1643	sek-6	3.15	3.75	-1.52	0.00422
1644	T26A5.6	6.83	7.44	-1.52	0.005391
1645	K11G9.5	3.59	4.19	-1.52	0.005457
1646	B0281.3	5.14	5.75	-1.52	0.005938
1647	C25H3.7	7.48	8.08	-1.52	0.006057
1648	T22B7.8	4.55	5.16	-1.52	0.00607
1649	Y18D10A.9	6.46	7.07	-1.52	0.007552
1650	dhhc-6	7.75	8.35	-1.52	0.008081
1651	F08H9.3	2.43	3.04	-1.52	0.009847
1652	cdk-7	7	7.6	-1.52	0.010284
1653	hlys-1	6.69	7.3	-1.52	0.011455
1654	C49C8.2	4.3	4.91	-1.52	0.019043
1655	mrpl-24	5.74	6.34	-1.52	0.019526
1656	C25G4.2	6.42	7.02	-1.52	0.019549
1657	C09B8.8	2.39	2.99	-1.52	0.020713
1658	R144.3	6.53	7.14	-1.52	0.021027
1659	nhr-176	4.52	5.13	-1.52	0.021047
1660	mrps-28	8.37	8.97	-1.52	0.021739
1661	acl-11	5.72	6.32	-1.52	0.022986
1662	gro-1	6.5	7.1	-1.52	0.023475
1663	cutl-3	3.53	4.14	-1.52	0.026195
1664	C44E12.1	5.54	6.14	-1.52	0.026843
1665	C06B3.6	8.73	9.33	-1.52	0.026939
1666	exos-4.2	6.49	7.1	-1.52	0.02743
1667	R07G3.8	7.25	7.86	-1.52	0.029014
1668	ZK1055.2	1.94	2.55	-1.52	0.036224
1669	acs-14	6.23	6.83	-1.52	0.037005
1670	R53.5	8.31	8.92	-1.52	0.03779
1671	asah-1	9.11	9.72	-1.52	0.046822
1672	arx-4	7.79	8.39	-1.52	0.0487
1673	Y46G5A.15	6.37	6.96	-1.51	0.000185
1674	use-1	6.44	7.04	-1.51	0.000493
1675	tre-3	7.19	7.78	-1.51	0.002033
1676	fmo-2	4.54	5.14	-1.51	0.002839

1677	oig-4	5.41	6	-1.51	0.003215
1678	pdha-1	9.12	9.72	-1.51	0.003388
1679	mecr-1	6.77	7.37	-1.51	0.003513
1680	C14B1.2	7.88	8.47	-1.51	0.003857
1681	F20A1.4	2.21	2.8	-1.51	0.005265
1682	F53F10.1	6.74	7.34	-1.51	0.005586
1683	C49A9.4	5	5.6	-1.51	0.005864
1684	C18F3.6	0.74	1.34	-1.51	0.007274
1685	glt-3	5.75	6.34	-1.51	0.008574
1686	Y55F3BL.4	7.37	7.96	-1.51	0.010868
1687	K06H7.7	5.31	5.91	-1.51	0.012663
1688	nhr-54	3.6	4.2	-1.51	0.014065
1689	K12H4.3	7.81	8.4	-1.51	0.016297
1690	hars-1	7.71	8.3	-1.51	0.019267
1691	F44B9.5	6.61	7.2	-1.51	0.019379
1692	F42A8.3	7.14	7.74	-1.51	0.02118
1693	mtss-1	9.47	10.06	-1.51	0.022049
1694	Y53C12A.3	7.18	7.78	-1.51	0.022467
1695	C06H2.7	5.81	6.41	-1.51	0.024811
1696	hex-5	4.47	5.07	-1.51	0.026403
1697	T02D1.8	5.76	6.36	-1.51	0.027919
1698	ttr-39	3.14	3.73	-1.51	0.031226
1699	mrps-18B	8.08	8.68	-1.51	0.032525
1700	B0035.18	4.57	5.17	-1.51	0.032764
1701	C48E7.1	9.23	9.83	-1.51	0.033376
1702	K03F8.3	4.78	5.37	-1.51	0.033517
1703	C25E10.12	5.57	6.16	-1.51	0.037903
1704	M01H9.4	5.85	6.44	-1.51	0.040537
1705	F52B5.7	3.87	4.47	-1.51	0.045473
1706	C13C4.11	4.25	4.84	-1.51	0.045507
1707	ttr-36	6.82	7.42	-1.51	0.0472

Table S4. The up- and down-regulated differentially expressed miRNAs in nematodes.

Number	miRNA	SiNPs-weight Avg signal (log2)	Control-weight Avg signal (log2)	Fold Change	Regulation	ANOVA p-value
1	cel-miR-58-5p	1.81	5.01	-9.19	down	0.005488
2	cel-miR-4813-3p	1.41	3.11	-3.26	down	0.041562
3	cel-miR-2210-3p	1.21	2.78	-2.97	down	0.009771
4	cel-miR-1829c	1.61	3.1	-2.81	down	0.04276
5	cel-miR-784-5p	0.61	1.97	-2.58	down	0.002443
6	cel-miR-788-3p	3.48	4.7	-2.34	down	0.038238
7	cel-miR-4929	1.3	2.51	-2.31	down	0.03776
8	cel-miR-75-5p	0.39	1.57	-2.27	down	0.038335
9	cel-miR-259-3p	1.12	2.28	-2.23	down	0.022146
10	cel-miR-1832a	1.07	2.18	-2.17	down	0.007643
11	cel-miR-793	1.26	2.34	-2.11	down	0.025241
12	cel-miR-47-3p	9.06	10.1	-2.05	down	0.014891
13	cel-miR-2217-3p	0.85	1.87	-2.03	down	0.020489
14	cel-miR-238-5p	0.78	1.8	-2.02	down	0.037867
15	cel-miR-358-5p	3.31	4.22	-1.87	down	0.032854
16	cel-let-7-5p	10.74	11.6	-1.81	down	0.013018
17	cel-miR-271	1.05	1.89	-1.79	down	0.032466
18	cel-miR-241-5p	11.09	11.88	-1.72	down	0.007084
19	cel-miR-2212-5p	1.12	1.88	-1.7	down	0.038196
20	cel-miR-63-3p	10.26	10.95	-1.61	down	0.009082
21	cel-miR-124-5p	2.92	3.55	-1.55	down	0.041479
22	cel-miR-234-3p	0.82	1.45	-1.54	down	0.025019
23	cel-miR-789	8.34	6.89	2.74	up	0.019043