

Supplementary Methods

Cytokine Array

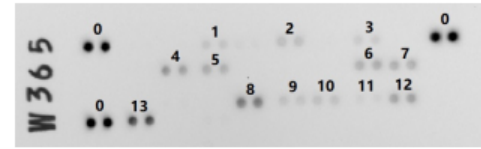
The relative levels of multiple cytokines in supernatant were measured using Human Cytokine Array Panel A (ARY005) following the manufacturer's instructions (R&D Systems, UK) and Molecular Imager ChemiDoc XRS+ System (Bio-Rad, UK). The results are presented as mean pixel density.

Supplementary Figure Preadipocyte-specific effect of $1\alpha,25(\text{OH})_2\text{D}_3$ on cytokines secreted in macrophage-induced preadipocytes. Preadipocytes were pre-incubated with $1\alpha,25(\text{OH})_2\text{D}_3$ (10 nM) in preadipocyte growth medium for 48 h, and then incubated with 25% MacCM or 25% MacCM along with $1\alpha,25(\text{OH})_2\text{D}_3$ (10 nM) in preadipocyte growth medium for a further 24 h. Supernatants were collected after the incubation, and then pooled (n=6). **(A)** Cytokines were measured using cytokine array. **(B)** The results are presented as mean pixel density in bar graph form.

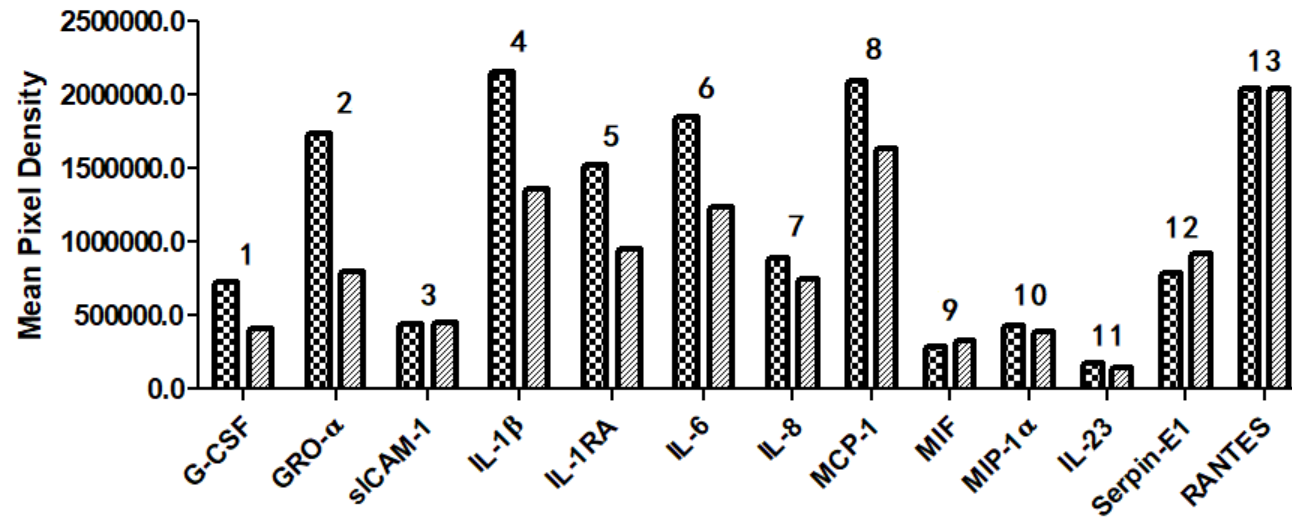
A

MacCM(25%)

$1\alpha,25(\text{OH})_2\text{D}_3(10\text{nM})+\text{MacCM}(25\%)$



B



0: Reference Spot