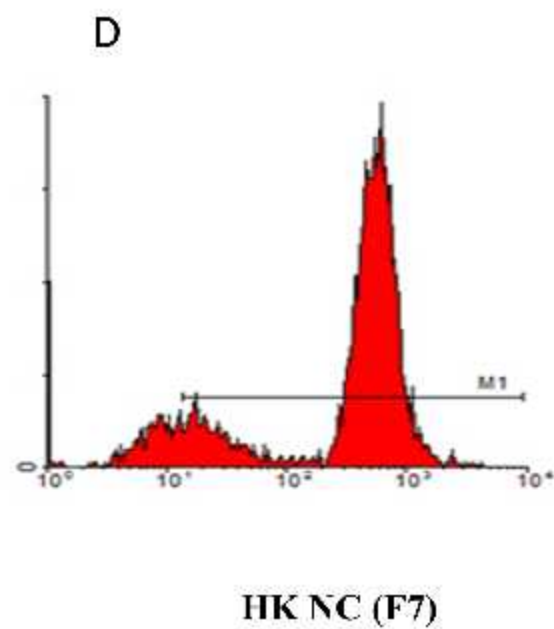
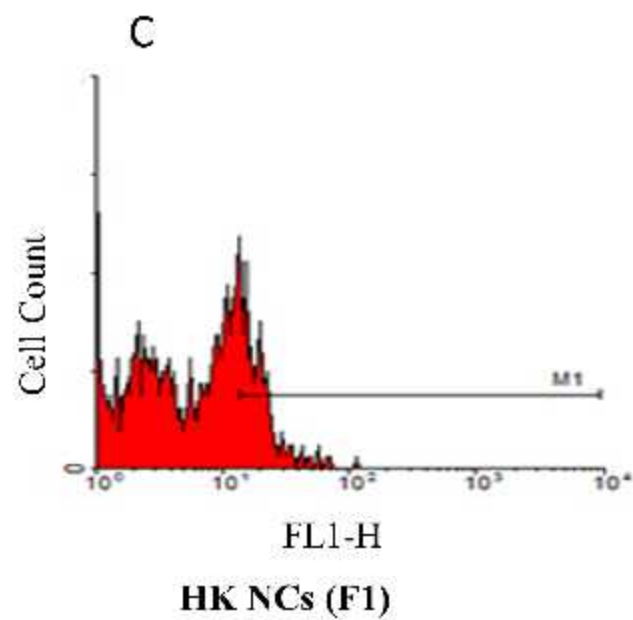
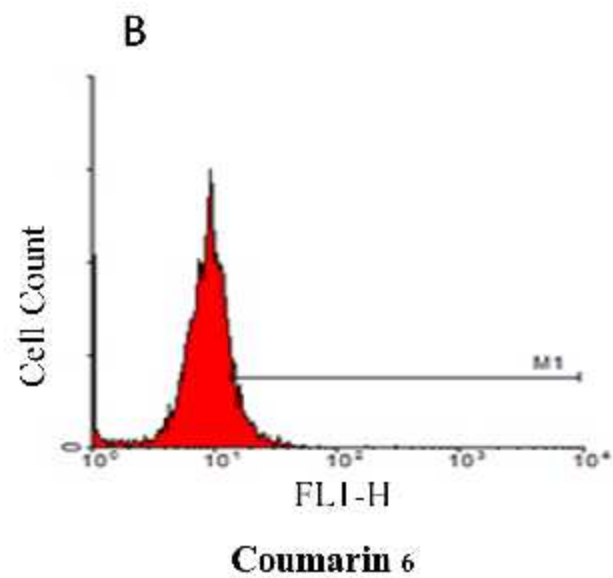
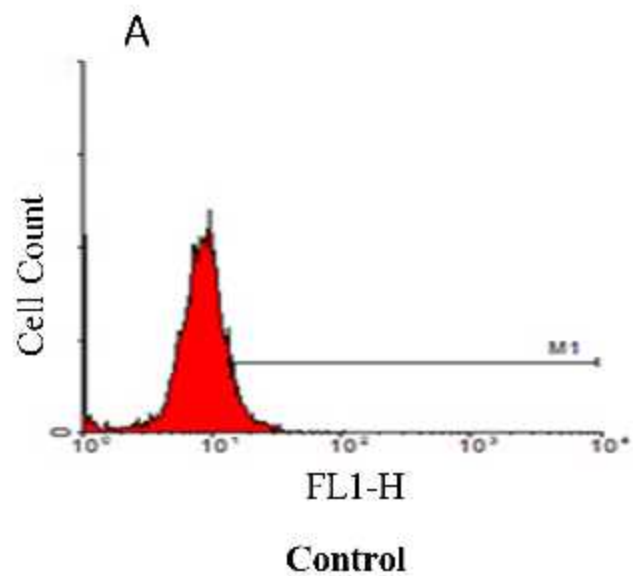


Supplementary Figure 1. Flow cytometry results for quantitative cellular uptake of coumarin 6 dye and different types of HK NCs determined after 24 hours of treatment. Results are represented as the count of positive cells and fluorescence shifts showing cellular uptake of each HK NC.

Supplementary Figure 2. Confocal laser scanning microscopy images of MCF-7 control cells (A-C), cells treated with HK NC (F1) and (D-F) cells treated with HK NC (F4) after 24 hours of treatment.



DAPI

FITC

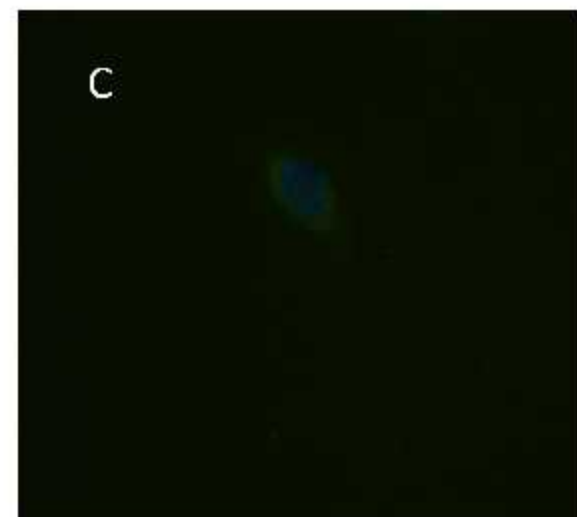
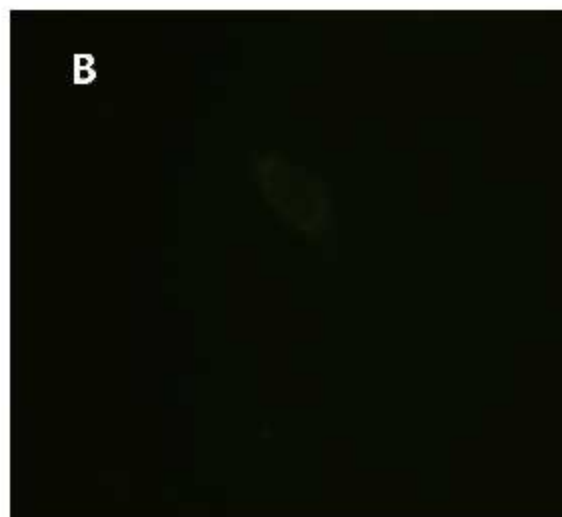
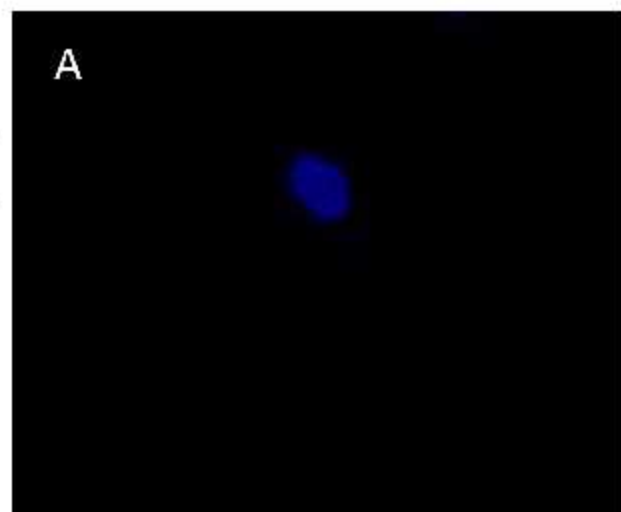
MERGE

A

B

C

HK-NCs (F1)



D

E

F

HK-NCs (F4)

