

Supplementary data

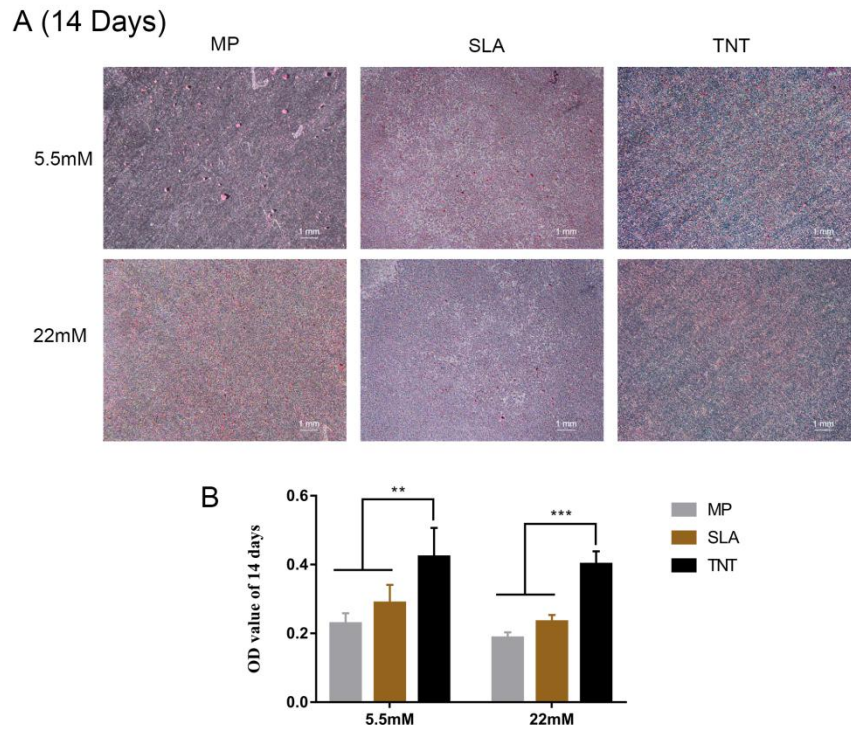


Figure S1. High-glucose conditions inhibited osteogenesis on different modified Ti surfaces. (A) The Alizarin Red staining on different modified Ti surfaces after osteogenic induction under high-glucose conditions for 14 days. (B) Semi-quantitative analysis of the Alizarin Red staining for 14 days. ** $p < 0.01$, *** $p < 0.001$.

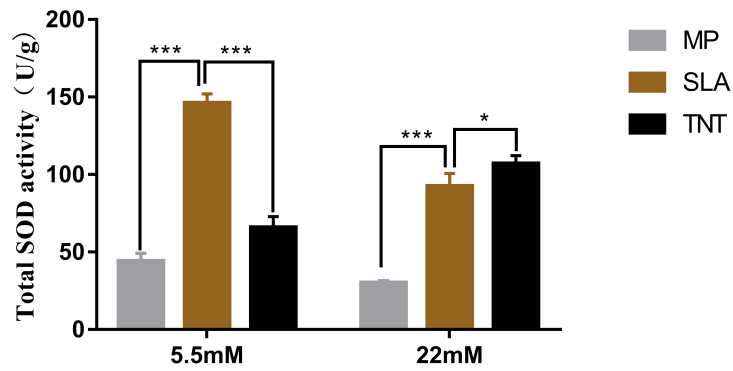


Figure S2. Determination of the enzymatic activity of total SOD on different modified Ti surfaces. The total SOD activity was detected by the Total Superoxide Dismutase Assay Kit. High-glucose conditions reduced the activity of total SOD on different modified Ti surfaces. Compared with the normal-glucose samples, the total SOD activity under high-glucose conditions increased in the TNT group, but decreased in the SLA group. * $p < 0.05$, *** $p < 0.001$.