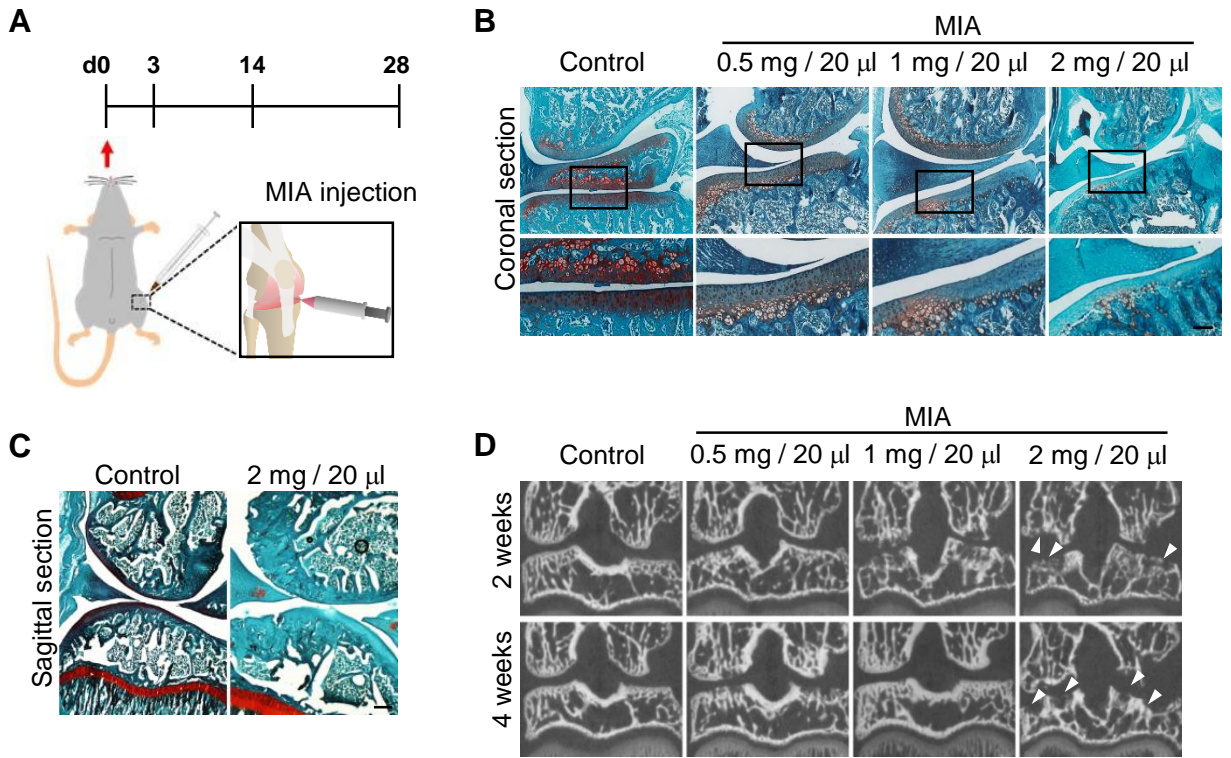


# Suppl Fig. 1.



## **Supplementary figures and figure legends**

Supplementary Figure 1. **The mono-iodoacetate (MIA) rat model for osteoarthritis and Chondrocyte viability with MIA treatment.** **(A)** Histopathology of knee sections from MIA-injected rats. Rats received intra-articular injections of 0.5, 1, or 2 mg MIA and were sacrificed on day 3. Coronal **(B)** and sagittal **(C)** sections were stained with Safranin-O (detecting cartilage and proteoglycans) and Fast Green (detecting bone). **(D)** Coronal micro computed tomography (micro-CT) images of the hind-knee joints of MIA-injected rats at weeks 2 and 4.