

Supplement materials

Table S1: Patients not receiving FCP before the diagnosis: Cumulated incidence proportion of FCP 6 months to 5 years after incident hospital diagnoses of stroke, Parkinsons Disease (PD), Multiple Sclerosis (MS) and Rheumatoid Arthritis (RA) between 2007 and 2016

Time since incident hospital diagnosis	Stroke		PD		MS		RA	
	n*	CIP, % (95% CI)	n*	CIP, % (95% CI)	n*	CIP, % (95% CI)	n*	CIP, % (95% CI)
6 months	113,653	2.3 (2.3–2.4)	3588	16.2 (15.1–17.3)	3801	20.6 (19.4–21.7)	13,334	3.6 (3.3–3.9)
1 year	100,808	4.9 (4.8–5.1)	2856	27.3 (26.0–28.6)	3134	31.7 (30.4–33.0)	12,431	6.3 (5.0–6.9)
2 years	81,797	7.2 (7.0–7.3)	1944	38.9 (37.5–40.3)	2401	41.8 (40.4–43.2)	10,546	10.4 (9.9–10.9)
3 years	66,591	8.3 (8.1–8.4)	1385	44.8 (43.3–46.2)	1943	47.4 (45.9–48.9)	8,848	13.5 (12.0–14.1)
4 years	53,593	9.0 (8.8–9.2)	986	48.6 (47.0–50.0)	1530	51.8 (50.3–53.2)	7,310	15.8 (15.1–16.4)
5 years	41,981	9.6 (9.5–9.8)	664	52.2 (50.6–53.7)	1211	55.0 (53.4–56.5)	5,946	17.5 (16.8–18.2)

Abbreviations: FCP, Free of charge physiotherapy; CIP, cumulated incidence proportion; CI, confidence interval

n*, Number at risk

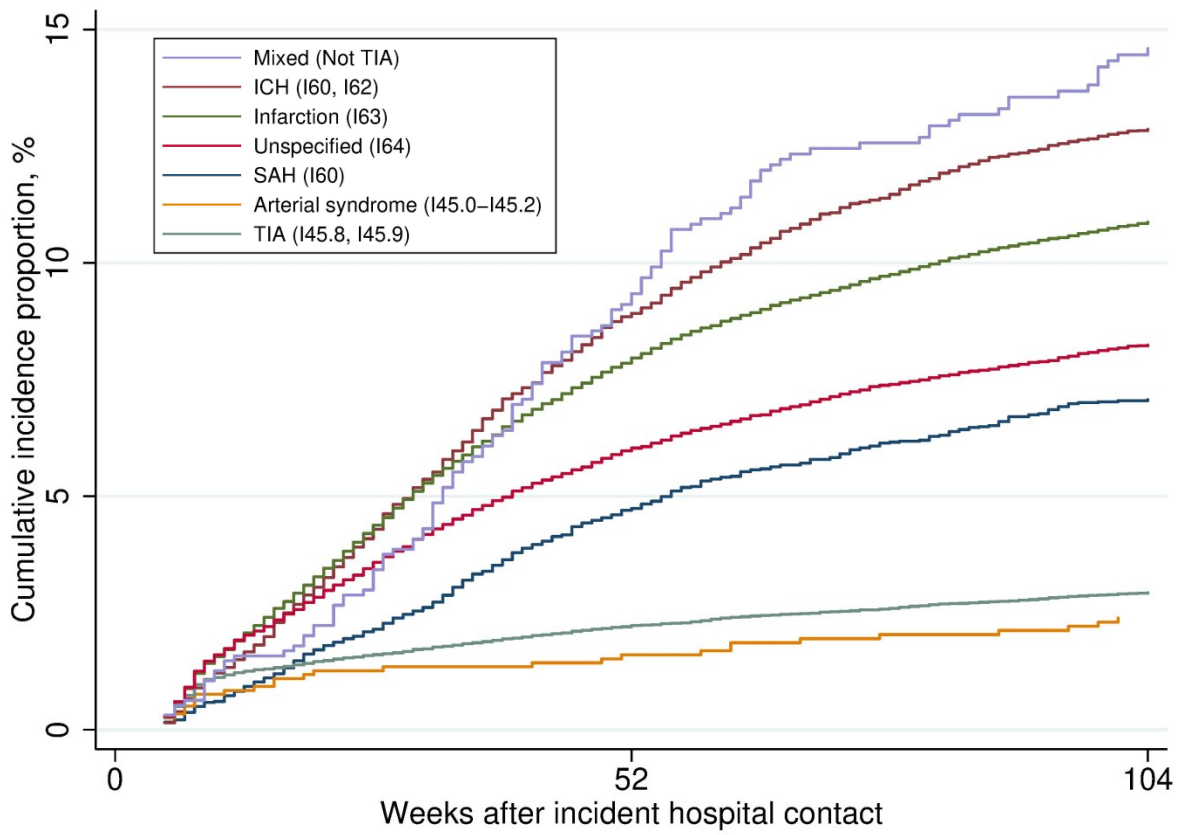


Figure S1: Cumulative incidence proportion of FCP in sub-diagnoses of stroke. Numbers in the legend refer to the ICD-10 codes.

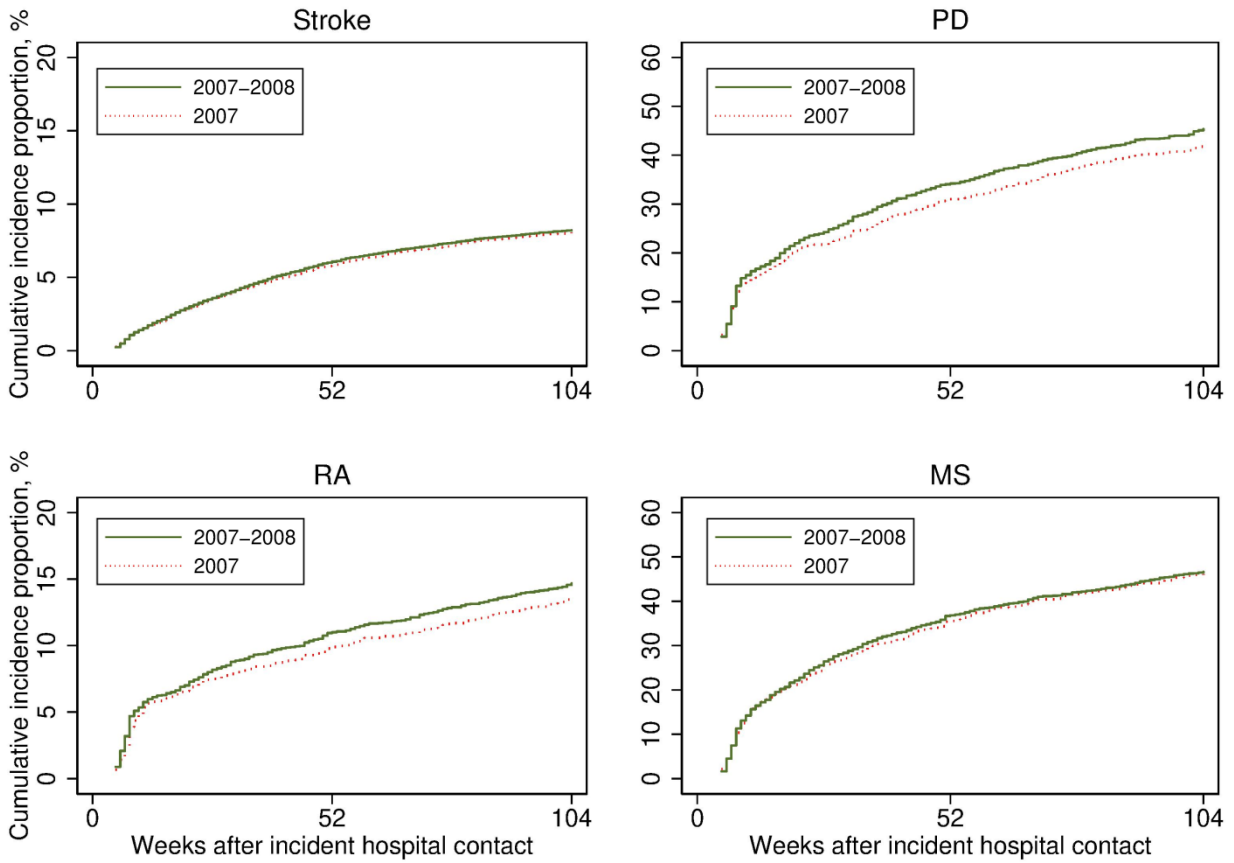


Figure S2: Cumulative incidence proportion of FCP after incident hospital diagnoses of stroke, Parkinsons Disease (PD), Multiple Sclerosis (MS) and Rheumatoid Arthritis (RA) in 2007 and 2007-2008 combined.