

## Supplementary Tables and Figures

**Supplementary Table S1. Clinico-pathological baseline factors for 19 patients**

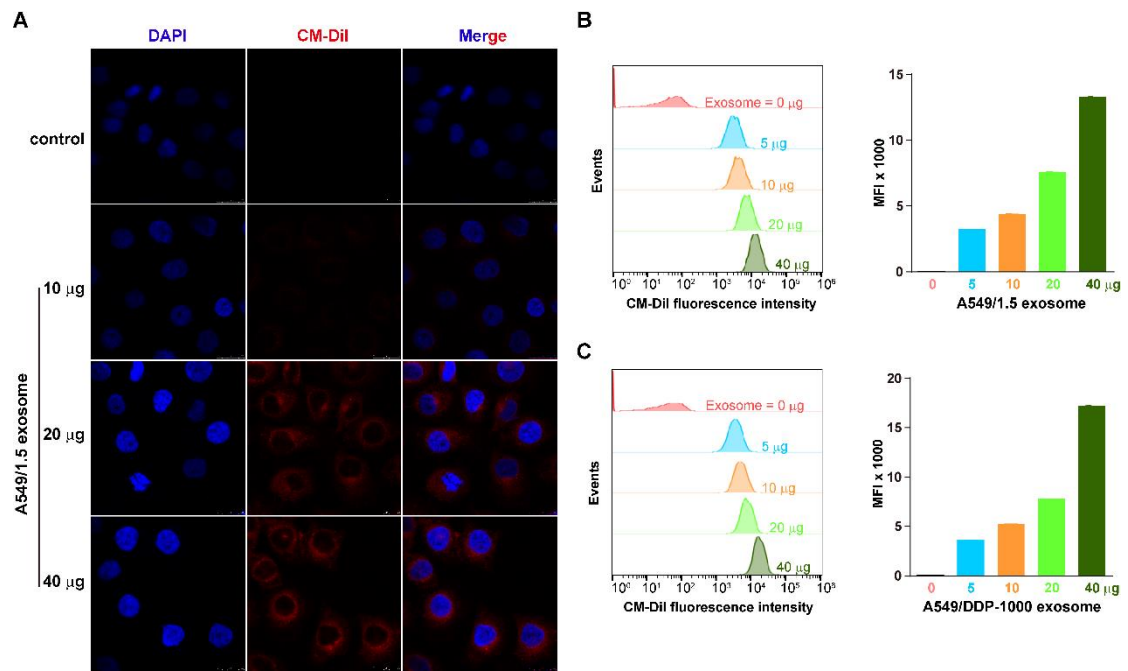
Clinical parameter	n	%
<b>Age (years)</b>		
≤60	5	26.32
>60	14	73.58
<b>Sex</b>		
Male	9	47.37
Female	10	52.63
<b>Histologic differentiation</b>		
Poor	11	57.89
Moderately	7	36.84
Well	1	5.27
<b>TNM stages</b>		
I	1	5.26
II	0	0
IIIA	3	15.79
IIIB+IV	15	78.95
<b>Histology type</b>		
Squamous	5	26.32
Adenocarcinoma	13	68.42
Other	1	5.48

**Supplementary Table S2**

Analyses of hsa-miR-425-3p promoter regions (-2kb upstream to +1)

Matrix ID	Name	Score	Start	End	Strand	Predicted site Sequence
MA0059.1	MAX::MYC	10.1533	685	695	-	aaccacctggc
		10.0231	684	694	+	ggccaggtggt
		9.51871	818	828	+	aagcgcgtgga
		8.78067	340	350	+	gaacacctggc
		8.78067	464	474	+	gaacacctggc
		8.76116	445	455	+	gccacctggt
		8.04669	446	456	-	gaccaggtggg

When the luciferase reporter vector containing the mutant c-Myc binding sequences was constructed, the sequences shown in red were deleted.



**Supplementary Figure S1 A dose-dependent internalization of CM-Dil-labeled exosomes by A549 cells.** (A) Representative confocal microscopy image showing the internalization of CM-Dil-labeled exosomes (red) by A549 cells. (B) Quantitative analysis for the internalization of CM-Dil-labeled A549/1.5 exosomes using FACS. (C) Quantitative analysis for the internalization of CM-Dil-labeled A549/DDP-1000 exosomes using FACS.