

Supplemental Figure 1: Analysis of HIF target genes in a subset of pediatric IBD

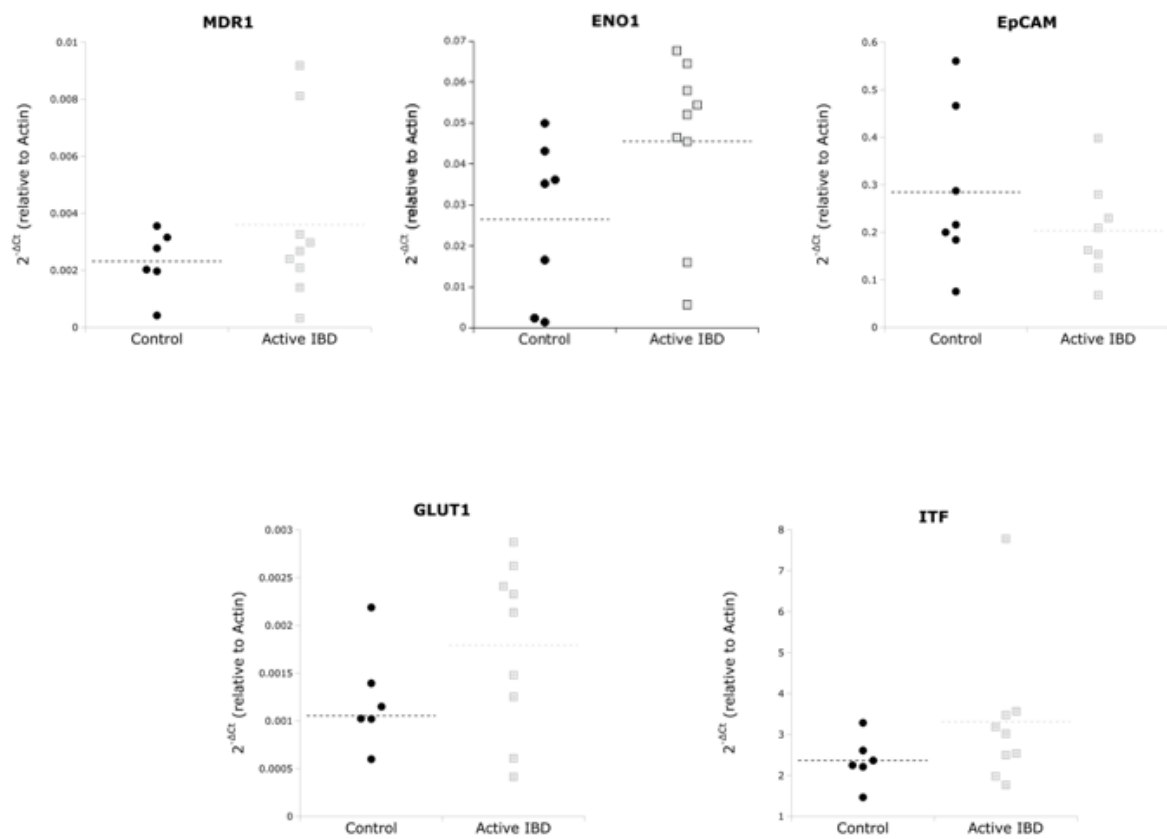
cohort. For indicated target genes, total RNA was isolated from colonic biopsies derived from pediatric non-colitis controls (n=7) and pediatric subjects with active IBD colitis (n=9). Quantitative PCR was used to analyze mRNA levels. Data are expressed transcript level derived from the differential threshold cycle number (2^{-CT}) relative to actin

Supplemental Figure 2: Pediatric Hemoglobin and Hematocrit levels compared to

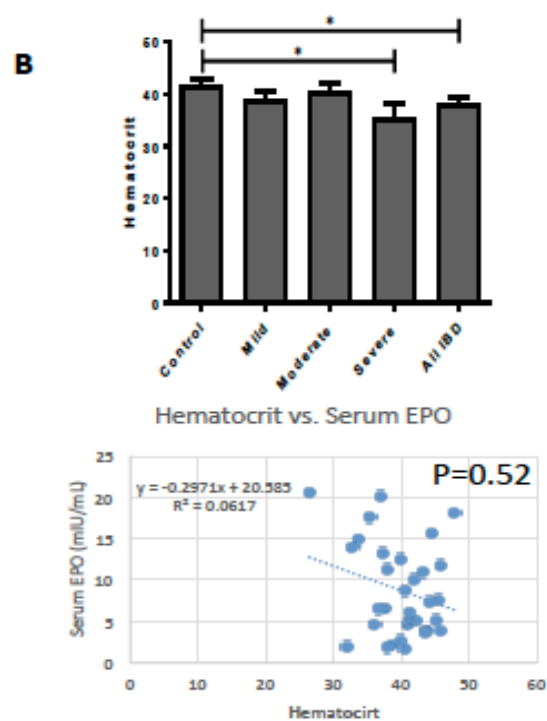
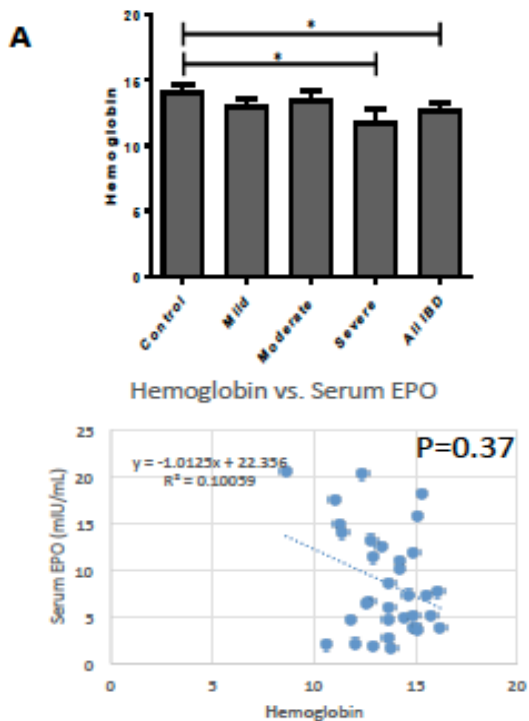
Serum EPO levels (A top) average Hemoglobin and (B top) Hematocrit of pediatric patients controls vs different levels of colitis *p<0.05. Blood drawn within 30 days of the colonoscopy. (A bottom) regression analysis of Hgb vs serum EPO or (B bottom Hematocrit vs Serum EPO.

Supplemental Figure 3: Adult Hemoglobin and Hematocrit levels compared to

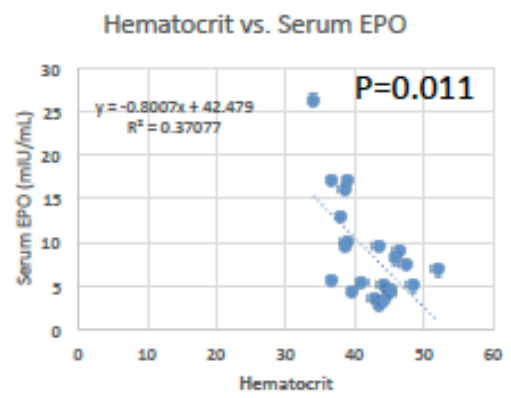
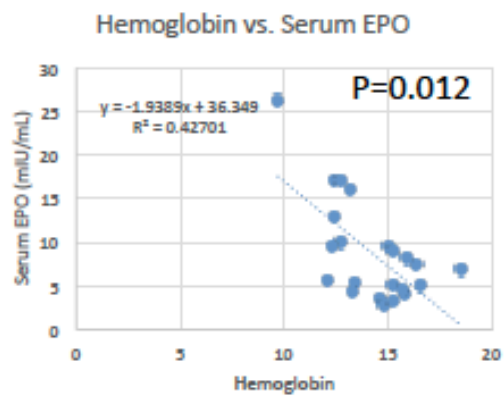
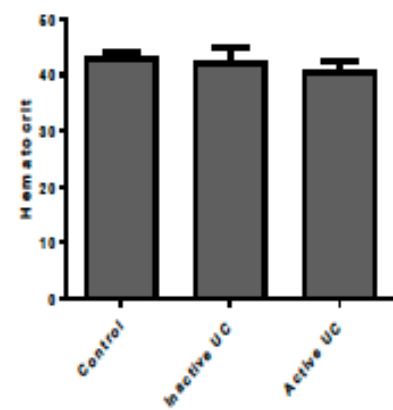
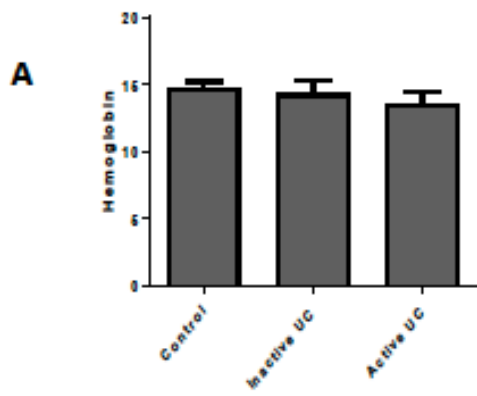
Serum EPO levels (A top) average Hemoglobin and (B top) Hematocrit of adult patients controls vs different levels of colitis *p<0.05. Blood drawn within 30 days of the colonoscopy. (A bottom) regression analysis of Hgb vs serum EPO or (B bottom) Hematocrit vs Serum EPO.



Supplemental Figure 1



Supplemental Figure 2



Supplemental Figure 3