

**Table S1. Association between socioeconomic status and individual performance measures of guideline-recommended care**

Ischemic stroke patient without atrial fibrillation receives platelet inhibitor therapy within the second day of admission	
Family income tertile	
Low	0.88 (0.81 - 0.96)
Middle	0.93 (0.87 - 0.98)
High	Reference
Employment status	
Working	Reference
Retired	0.92 (0.82 - 1.03)
Unemployed	0.97 (0.84 - 1.13)
Highest achieved education	
Primary	0.92 (0.83 - 1.02)
Upper secondary	0.99 (0.90 - 1.09)
Higher	Reference
Reference person	3.03 (2.26 - 4.04)
R <sup>2</sup>	0.037
n	53,567

\* Odds ratios (95% confidence interval) of individual performance measure fulfilment. Adjusted for gender, age, previous stroke, diabetes mellitus, hypertension, stroke severity and year. Multilevel modelling was used as the patient-level was nested in the hospital department-level.

**Table S2. Association between socioeconomic status and individual performance measures of guideline-recommended care**

Ischemic stroke patient with atrial fibrillation receives oral anticoagulation therapy within 14 days after admission	
Family income tertile	
Low	0.74 (0.61 - 0.89)
Middle	0.75 (0.61 - 0.94)
High	Reference
Employment status	
Working	Reference
Retired	1.06 (0.85 - 1.33)
Unemployed	1.16 (0.51 - 2.63)
Highest achieved education	
Primary	0.86 (0.70 - 1.07)
Upper secondary	0.82 (0.65 - 1.03)
Higher	Reference
Reference person	0.68 (0.38 - 1.20)
R <sup>2</sup>	0.102
n	6,207

\* Odds ratios (95% confidence interval) of individual performance measure fulfilment. Adjusted for gender, age, previous stroke, diabetes mellitus, hypertension, stroke severity and year. Multilevel modelling was used as the patient-level was nested in the hospital department-level.

**Table S3. Association between socioeconomic status and individual performance measures of guideline-recommended care**

Stroke patient is examined with CT/MR-scan on the day of admission	
Family income tertile	
Low	0.82 (0.75 - 0.91)
Middle	0.91 (0.85 - 0.97)
High	Reference
Employment status	
Working	Reference
Retired	0.86 (0.81 - 0.91)
Unemployed	0.89 (0.80 - 1.00)
Highest achieved education	
Primary	0.96 (0.88 - 1.04)
Upper secondary	0.98 (0.90 - 1.06)
Higher	Reference
Reference person	3.22 (2.54 - 4.09)
R <sup>2</sup>	0.120
n	73,724

\* Odds ratios (95% confidence interval) of individual performance measure fulfilment. Adjusted for gender, age, previous stroke, diabetes mellitus, hypertension, stroke severity and year. Multilevel modelling was used as the patient-level was nested in the hospital department-level.

**Table S4. Association between socioeconomic status and individual performance measures of guideline-recommended care**

Stroke patient is assessed by a physiotherapist regarding need of rehabilitation (including type and extent) within 2 days of admission	
Family income tertile	
Low	0.88 (0.83 - 0.94)
Middle	0.97 (0.92 - 1.02)
High	Reference
Employment status	
Working	Reference
Retired	0.99 (0.90 - 1.08)
Unemployed	0.97 (0.85 - 1.11)
Highest achieved education	
Primary	1.03 (0.94 - 1.14)
Upper secondary	1.04 (0.97 - 1.11)
Higher	Reference
Reference person	0.85 (0.62 - 1.16)
R <sup>2</sup>	0.075
n	60,472

\* Odds ratios (95% confidence interval) of individual performance measure fulfilment. Adjusted for gender, age, previous stroke, diabetes mellitus, hypertension, stroke severity and year. Multilevel modelling was used as the patient-level was nested in the hospital department-level.

**Table S5. Association between socioeconomic status and individual performance measures of guideline-recommended care**

Stroke patient is assessed by an occupational therapist regarding need of rehabilitation (including type and extent) within the second day of admission	
Family income tertile	
Low	0.88 (0.82 - 0.94)
Middle	0.97 (0.92 - 1.02)
High	Reference
Employment status	
Working	Reference
Retired	0.99 (0.92 - 1.06)
Unemployed	0.95 (0.84 - 1.07)
Highest achieved education	
Primary	0.98 (0.90 - 1.08)
Upper secondary	1.01 (0.96 - 1.07)
Higher	Reference
Reference person	0.76 (0.58 - 1.01)
R <sup>2</sup>	0.082
n	61,387

\* Odds ratios (95% confidence interval) of individual performance measure fulfilment. Adjusted for gender, age, previous stroke, diabetes mellitus, hypertension, stroke severity and year. Multilevel modelling was used as the patient-level was nested in the hospital department-level.

**Table S6. Association between socioeconomic status and individual performance measures of guideline-recommended care**

Stroke patient is mobilized on the day of admission	
Family income tertile	
Low	0.75 (0.66 - 0.85)
Middle	0.87 (0.80 - 0.94)
High	Reference
Employment status	
Working	Reference
Retired	0.90 (0.82 - 0.99)
Unemployed	0.84 (0.69 - 1.02)
Highest achieved education	
Primary	1.03 (0.90 - 1.18)
Upper secondary	1.08 (0.98 - 1.20)
Higher	Reference
Reference person	0.29 (0.20 - 0.42)
R <sup>2</sup>	0.156
n	30,307

\* Odds ratios (95% confidence interval) of individual performance measure fulfilment. Adjusted for gender, age, previous stroke, diabetes mellitus, hypertension, stroke severity and year. Multilevel modelling was used as the patient-level was nested in the hospital department-level.

**Table S7. Association between socioeconomic status and individual performance measures of guideline-recommended care**

Stroke patient receives a nutritional risk assessment within the second day of admission	
Family income tertile	
Low	0.78 (0.73 - 0.84)
Middle	0.88 (0.83 - 0.93)
High	Reference
Employment status	
Working	Reference
Retired	0.88 (0.80 - 0.97)
Unemployed	0.92 (0.81 - 1.05)
Highest achieved education	
Primary	1.00 (0.91 - 1.11)
Upper secondary	1.04 (0.97 - 1.12)
Higher	Reference
Reference person	0.92 (0.67 - 1.26)
R <sup>2</sup>	0.070
n	62,372

\* Odds ratios (95% confidence interval) of individual performance measure fulfilment. Adjusted for gender, age, previous stroke, diabetes mellitus, hypertension, stroke severity and year. Multilevel modelling was used as the patient-level was nested in the hospital department-level.

**Table S8. Association between socioeconomic status and individual performance measures of guideline-recommended care**

Stroke patient is admitted to a stroke unit within the second day of admission	
Family income tertile	
Low	0.76 (0.68 - 0.85)
Middle	0.83 (0.76 - 0.91)
High	Reference
Employment status	
Working	Reference
Retired	1.00 (0.91 - 1.09)
Unemployed	1.08 (0.89 - 1.31)
Highest achieved education	
Primary	0.97 (0.85 - 1.11)
Upper secondary	1.07 (0.97 - 1.17)
Higher	Reference
Reference person	2.64 (1.55 - 4.51)
R <sup>2</sup>	0.046
n	65,035

\* Odds ratios (95% confidence interval) of individual performance measure fulfilment. Adjusted for gender, age, previous stroke, diabetes mellitus, hypertension, stroke severity and year. Multilevel modelling was used as the patient-level was nested in the hospital department-level.

**Table S9. Association between socioeconomic status and individual performance measures of guideline-recommended care**

Ischemic stroke patient is examined with ultrasound/ CT-/MR-angiography of	
--	--

carotid arteries within 4 days of admission	
Family income tertile	
Low	0.79 (0.70 - 0.88)
Middle	0.88 (0.81 - 0.96)
High	Reference
Employment status	
Working	Reference
Retired	0.82 (0.74 - 0.91)
Unemployed	0.97 (0.82 - 1.16)
Highest achieved education	
Primary	0.81 (0.72 - 0.90)
Upper secondary	0.91 (0.83 - 1.00)
Higher	Reference
Reference person	0.56 (0.31 - 1.00)
R <sup>2</sup>	0.152
n	36,822

\* Odds ratios (95% confidence interval) of individual performance measure fulfilment. Adjusted for gender, age, previous stroke, diabetes mellitus, hypertension, stroke severity and year. Multilevel modelling was used as the patient-level was nested in the hospital department-level.

**Table S10. Association between socioeconomic status and individual performance measures of guideline-recommended care**

Stroke patient is admitted to a hospital within 3 hours after symptom onset	
Family income tertile	
Low	0.67 (0.63 - 0.73)
Middle	0.82 (0.77 - 0.88)
High	Reference
Employment status	
Working	Reference
Retired	0.82 (0.76 - 0.89)
Unemployed	1.05 (0.94 - 1.18)
Highest achieved education	
Primary	0.94 (0.86 - 1.03)
Upper secondary	0.97 (0.90 - 1.05)
Higher	Reference
Reference person	2.37 (1.72 - 3.27)
R <sup>2</sup>	0.052
n	28,379

\* Odds ratios (95% confidence interval) of individual performance measure fulfilment. Adjusted for gender, age, previous stroke, diabetes mellitus, hypertension, stroke severity and year. Multilevel modelling was used as the patient-level was nested in the hospital department-level.

**Table S11. Association between socioeconomic status and individual performance measures of guideline-recommended care**

Stroke patient is admitted to a hospital within 4.5 hours of symptom onset	
Family income tertile	

Low	0.68 (0.63 - 0.74)
Middle	0.81 (0.76 - 0.87)
High	Reference
Employment status	
Working	Reference
Retired	0.83 (0.77 - 0.91)
Unemployed	1.05 (0.94 - 1.18)
Highest achieved education	
Primary	0.98 (0.89 - 1.06)
Upper secondary	0.98 (0.91 - 1.05)
Higher	Reference
Reference person	3.72 (2.76 - 5.00)
R <sup>2</sup>	0.050
n	28,379

\* Odds ratios (95% confidence interval) of individual performance measure fulfilment. Adjusted for gender, age, previous stroke, diabetes mellitus, hypertension, stroke severity and year. Multilevel modelling was used as the patient-level was nested in the hospital department-level.

**Table S12. Association between socioeconomic status and individual performance measures of guideline-recommended care**

Stroke patient receives indirect swallowing test on the day of admission before receiving food or fluids to assess swallowing function and risk of aspiration	
Family income tertile	
Low	0.85 (0.76 - 0.96)
Middle	0.92 (0.83 - 1.02)
High	Reference
Employment status	
Working	Reference
Retired	0.89 (0.77 - 1.02)
Unemployed	0.87 (0.65 - 1.16)
Highest achieved education	
Primary	0.88 (0.77 - 0.99)
Upper secondary	0.99 (0.87 - 1.13)
Higher	Reference
Reference person	4.45 (3.10 - 6.40)
R <sup>2</sup>	0.010
n	24,360

\* Odds ratios (95% confidence interval) of individual performance measure fulfilment. Adjusted for gender, age, previous stroke, diabetes mellitus, hypertension, stroke severity and year. Multilevel modelling was used as the patient-level was nested in the hospital department-level.

**Table S13. Association between socioeconomic status and individual performance measures of guideline-recommended care**

Stroke patient receives direct swallowing test on the day of admission before receiving food or fluids to assess swallowing function and risk of aspiration	
---	--

Family income tertile	
Low	0.86 (0.77 - 0.96)
Middle	0.92 (0.85 - 1.01)
High	Reference
Employment status	
Working	Reference
Retired	0.86 (0.74 - 1.01)
Unemployed	0.89 (0.67 - 1.18)
Highest achieved education	
Primary	0.89 (0.78 - 1.02)
Upper secondary	1.00 (0.87 - 1.15)
Higher	Reference
Reference person	2.31 (1.55 - 3.43)
R <sup>2</sup>	0.015
n	21,454

\* Odds ratios (95% confidence interval) of individual performance measure fulfilment. Adjusted for gender, age, previous stroke, diabetes mellitus, hypertension, stroke severity and year. Multilevel modelling was used as the patient-level was nested in the hospital department-level.

**Table S14. Association between socioeconomic status and individual performance measures of guideline-recommended care**

Ischemic stroke patient undergoes carotid endarterectomy within 14 days of admission	
Family income tertile	
Low	0.82 (0.48 - 1.40)
Middle	0.89 (0.57 - 1.38)
High	Reference
Employment status	
Working	Reference
Retired	0.57 (0.34 - 0.97)
Unemployed	1.08 (0.26 - 4.50)
Highest achieved education	
Primary	1.32 (0.71 - 2.44)
Upper secondary	1.25 (0.79 - 1.98)
Higher	Reference
Reference person	0.44 (0.07 - 2.71)
R <sup>2</sup>	0.075
n	656

\* Odds ratios (95% confidence interval) of individual performance measure fulfilment. Adjusted for gender, age, previous stroke, diabetes mellitus, hypertension, stroke severity and year. Multilevel modelling was used as the patient-level was nested in the hospital department-level.

**Table S15. Association between socioeconomic status and individual performance measures of guideline-recommended care**

Stroke patient is treated with thrombolysis and has a door to needle time within 1 hour	
Family income tertile	

Low	1.17 (0.75 - 1.83)
Middle	0.93 (0.74 - 1.17)
High	Reference
Employment status	
Working	Reference
Retired	0.78 (0.63 - 0.96)
Unemployed	0.87 (0.52 - 1.48)
Highest achieved education	
Primary	0.90 (0.73 - 1.10)
Upper secondary	1.04 (0.87 - 1.24)
Higher	Reference
Reference person	1.15 (0.53 - 2.48)
R <sup>2</sup>	0.062
n	3,299

\* Odds ratios (95% confidence interval) of individual performance measure fulfilment. Adjusted for gender, age, previous stroke, diabetes mellitus, hypertension, stroke severity and year. Multilevel modelling was used as the patient-level was nested in the hospital department-level.

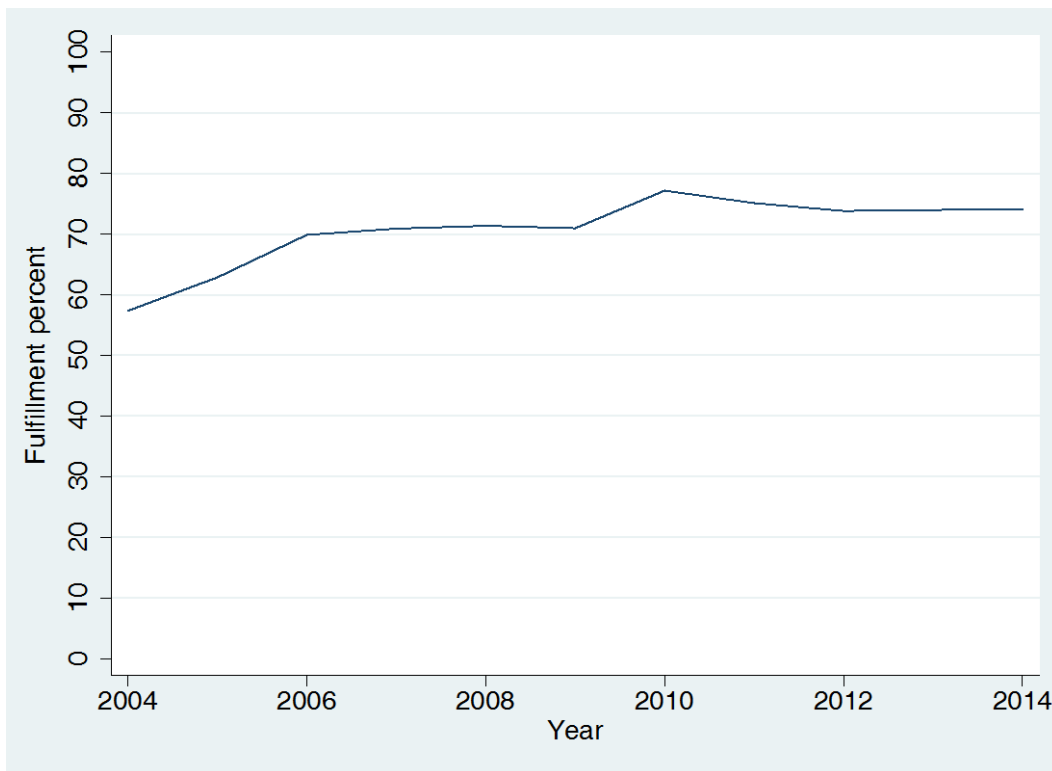
**Table S16. Association between socioeconomic status and individual performance measures of guideline-recommended care**

Ischemic stroke patient receives thrombolysis	
Family income tertile	
Low	0.47 (0.42 - 0.53)
Middle	0.67 (0.59 - 0.75)
High	Reference
Employment status	
Working	Reference
Retired	0.76 (0.68 - 0.84)
Unemployed	1.07 (0.91 - 1.26)
Highest achieved education	
Primary	0.94 (0.79 - 1.12)
Upper secondary	0.95 (0.81 - 1.12)
Higher	Reference
Reference person	0.34 (0.17 - 0.68)
R <sup>2</sup>	0.084
n	25,123

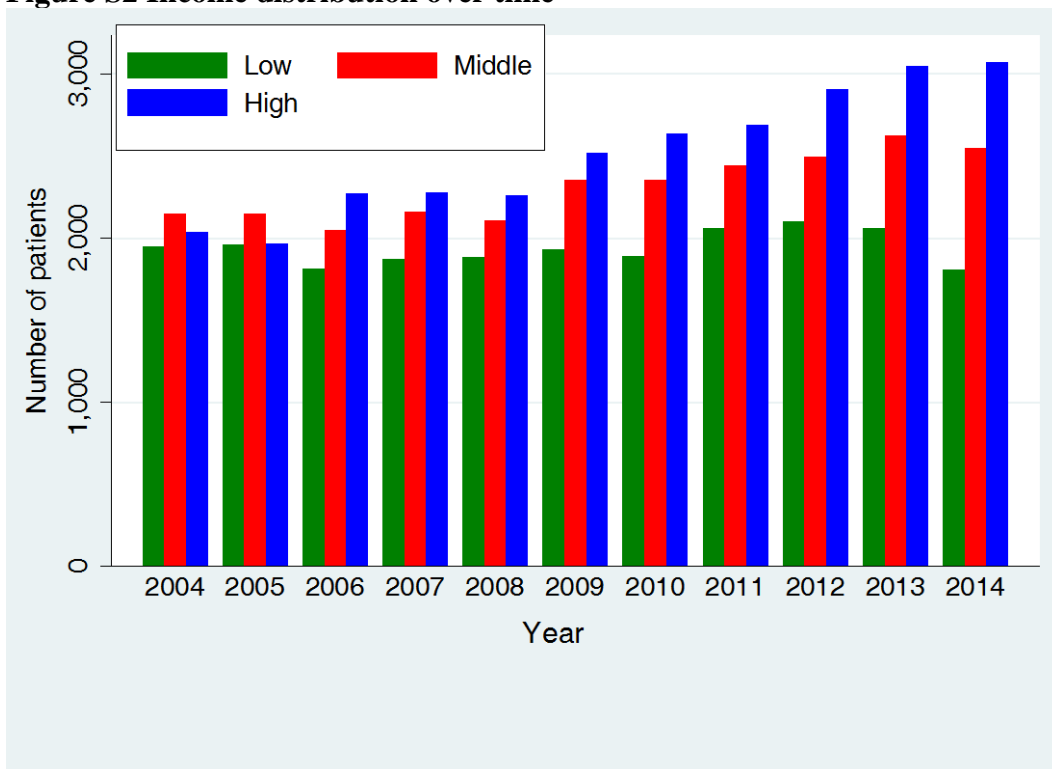
\* Odds ratios (95% confidence interval) of individual performance measure fulfilment. Adjusted for gender, age, previous stroke, diabetes mellitus, hypertension, stroke severity and year. Multilevel modelling was used as the patient-level was nested in the hospital department-level.

**Figure S1 Average crude performance over time**

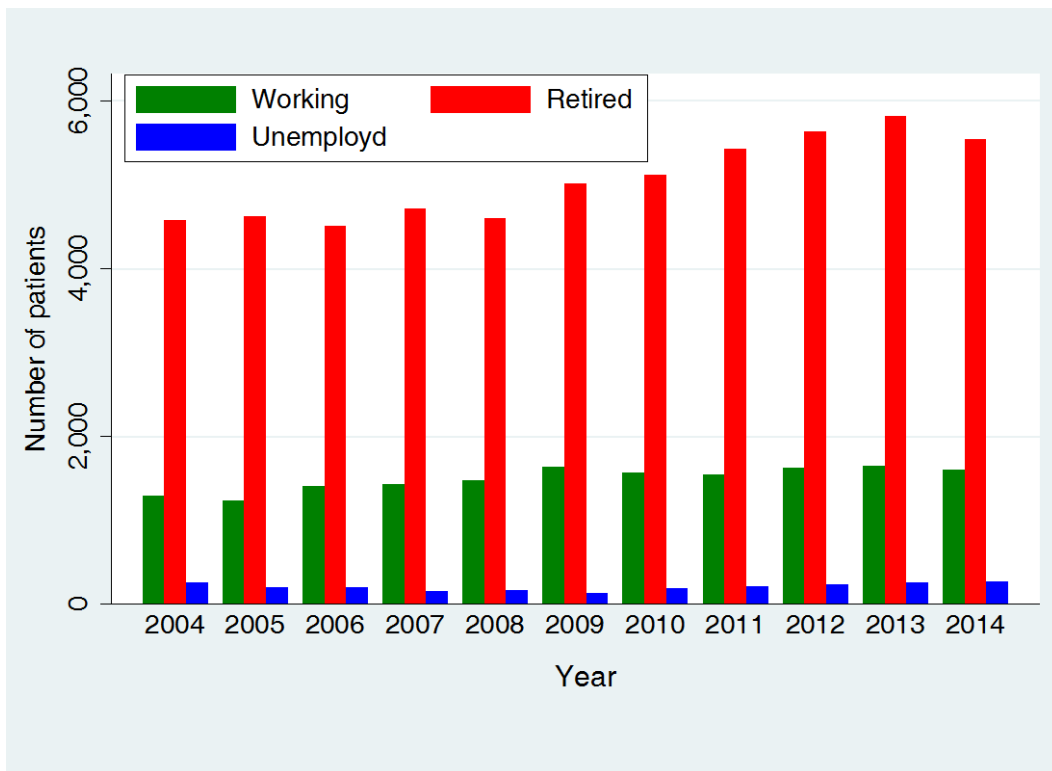




**Figure S2 Income distribution over time**



**Figure S3 Employment distribution over time**



**Figure S4 Education distribution over time**

