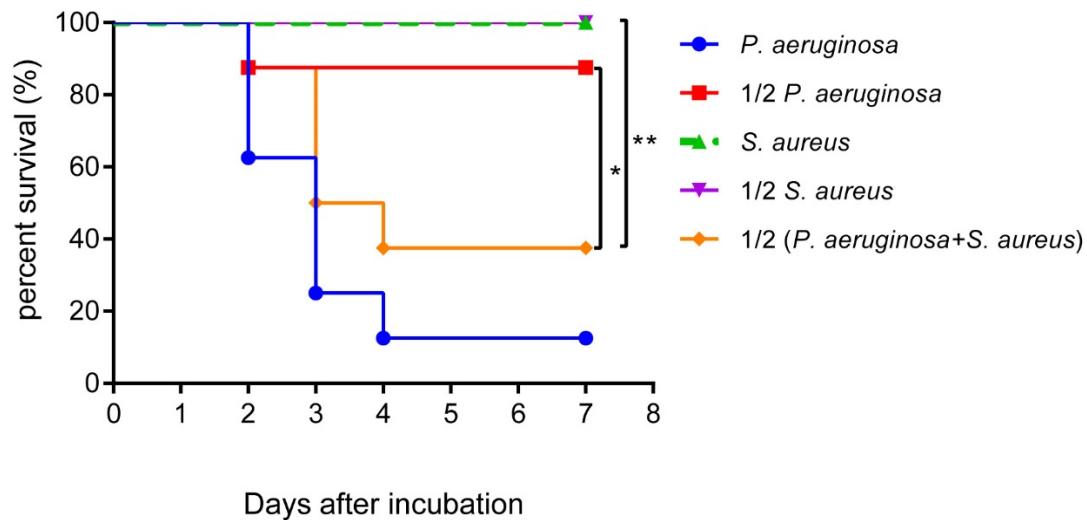


Supplement figure 1. Coinfection of *P. aeruginosa* and *S. aureus* reduces mouse survival. The survival curves of *BALB/c* mice (n=8) infected with *P. aeruginosa* (2.5×10^6 CFU) (Pa), *S. aureus* (7.5×10^8 CFU) (Sa), *P. aeruginosa* + *S. aureus*, lethal dose *P. aeruginosa* (5×10^6 CFU), or *S. aureus* (1.5×10^9 CFU). Survival rates were monitored daily for a week, and survival rate significance was determined by log-rank test. * $P < 0.05$ compared to mono-*P. aeruginosa* infection, ** $P < 0.01$ compared to *S. aureus* mono-infection, and data represent at least three trials. The animals were euthanized the day after observation endpoint.



Supplement figure 2. *Tachyplestin III* show no therapy activity in bacterial infection The survival curves of *BALB/c* mice (n=8) infected with *P. aeruginosa* (5×10^6 CFU) (Pa). 10 mg/Kg *Tachyplestin III* and control peptide *Cathelcidin-BF* were i. v. injected 2 h after bacterial infection. Survival rates were monitored daily for a week, and survival rate significance was determined by log-rank test. * $P < 0.05$ compared to *Cathelcidin-BF*-treated, ns non-significant compared to *Tachyplestin III* -treated, and data represent at least three trials. The animals were euthanized the day after

