

## **Supplementary Materials:**

### **Supplementary Figure and Table legend**

Figure S1: Flowchart of the subjects' selection for the TBCCC cohort (A) and the SERR cohort (B).

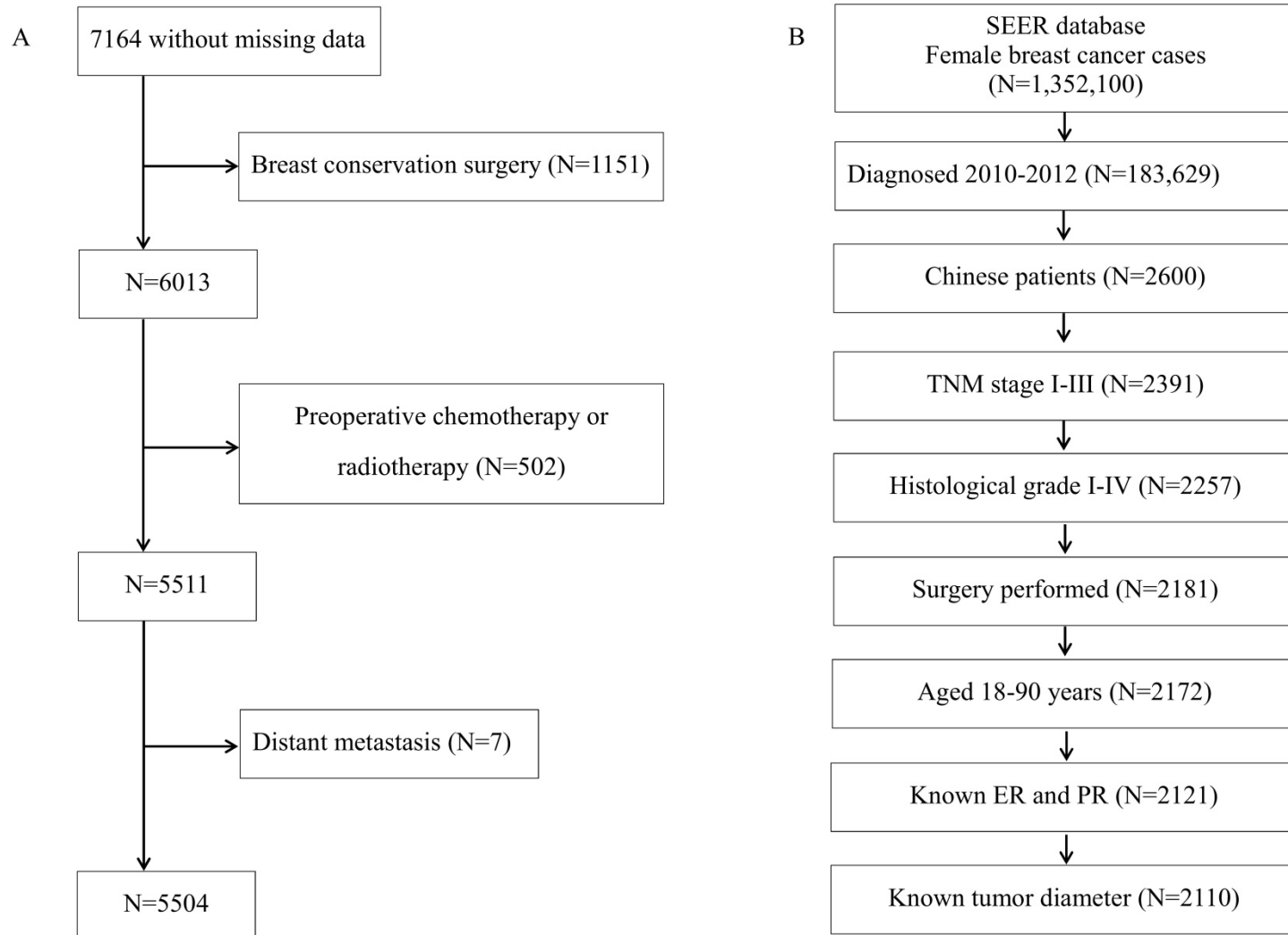
Table S1: Comparison of different models for evaluating breast cancer prognosis

Table S2: Difference in the demographic and clinical factors between the subjects receiving chemotherapy and without in total population.

Table S3: Difference in the demographic and clinical factors between the subjects receiving chemotherapy and without in low risk population.

Table S4: Difference in the demographic and clinical factors between the subjects receiving chemotherapy and without in mediate risk population.

Table S5: Difference in the demographic and clinical factors between the subjects receiving chemotherapy and in high risk population.



**Figure S1: Flowchart of the subjects' selection for the TBCCC cohort (A) and the SERR cohort (B).**

**Table S1: Comparison of different models for evaluating breast cancer prognosis**

<b>Models</b>	<b>Population</b>	<b>Factors</b>	<b>Outcomes</b>
<b>PREDICT</b>	Eastern Cancer Registration and Information Centre (ECRIC) dataset	Age at diagnosis, menopausal status, ER status, HER2 status, Ki-67 status, Tumor size, Tumor grade, positive nodes number, and diagnosis type (screening or symptoms)	Breast cancer specific mortality and mortality from other causes
<b>MammaPrint</b>	Primary breast cancer patients	70 genes associated with breast cancer recurrence	Breast cancer recurrence
<b>OncotypeDX</b>	NSABP trial B-14	21 genes associated with breast cancer recurrence	Breast cancer distant recurrence
<b>MSKCC nomogram</b>	Breast cancer procedures of axillary SLN biopsy performed at Memorial Sloan-Kettering Cancer Center	Age, tumor size, tumor type, lymphovascular invasion, tumor location, multifocality, and ER status and PR status	Breast cancer with sentinel lymph node (SLN) metastasis
<b>Adjuvant! Online</b>	Breast cancer patients in Surveillance, Epidemiology, and End-Results data	Age, menopausal status, Comorbidity, ER status, tumor size, positive nodes	Breast cancer specific mortality rates at the 10-year

**Table S2: Difference in the demographic and clinical factors between the subjects receiving chemotherapy and without in total population.**

Factors	Before matching				After PSM matching			
	Not receiving Chemotherapy	Receiving Chemotherapy	$\chi^2/Z$	<i>P</i> -value	Not receiving Chemotherapy	Receiving Chemotherapy	$\chi^2/Z$	<i>P</i> -value
<b>Age</b>			34.28	<0.0001			0.20	0.66
≤50 years	328(38.2)	2278(49.0)			328(38.2)	337(39.2)		
>50 years	531(61.8)	2367(51.0)			531(61.8)	522(60.8)		
<b>Diameter</b>			8.75	0.003			0.28	0.60
≤2 cm	418(48.7)	2007(43.2)			418(48.7)	429(49.9)		
>2cm	441(51.3)	2638(56.8)			441(51.3)	430(50.1)		
<b>Histological differentiation</b>			1.84	0.066			0.31	0.76
Well differentiated	97(11.3)	360(7.8)			97(11.3)	75(8.7)		
Moderately differentiated	610(71.0)	3457(74.4)			610(71.0)	646(75.2)		
Poor differentiated	152(17.7)	828(17.8)			152(17.7)	138(16.1)		
<b>Lymph node metastasis</b>			50.50	<0.0001			0.094	0.76
N0	567(66.0)	2456(52.9)			567(66.0)	573(66.7)		
N+	292(34.0)	2189(47.1)			292(34.0)	286(33.3)		
<b>ER</b>			3.31	0.07			1.88	0.17
Negative	243(28.3)	1459(31.4)			243(28.3)	269(31.3)		
Positive	616(71.7)	3186(68.6)			616(71.7)	590(68.7)		
<b>PR</b>			0.83	0.36			1.13	0.29
Negative	290(33.8)	1643(35.4)			290(33.8)	311(36.2)		
Positive	569(66.2)	3002(64.6)			569(66.2)	548(63.8)		
<b>HER-2</b>			1.64	0.20			0.114	0.74
Negative	654(76.1)	3440(74.1)			654(76.1)	648(75.4)		
Positive	205(23.9)	1205(25.9)			205(23.9)	211(24.6)		
<b>Endocrine therapy</b>			24.18	<0.0001			0.298	0.59
No	685(79.7)	3327(71.6)			685(79.7)	694(80.8)		
Yes	174(20.3)	1318(28.4)			174(20.3)	165(19.2)		
<b>Radiotherapy</b>			119.19	<0.0001			0.023	0.88
No	836(97.3)	3851(82.9)			836(97.3)	837(97.4)		
Yes	23(15.6)	794(17.1)			23(2.7)	22(2.6)		

Abbreviation: ER=estrogen receptor; PR=Progesterone receptor; HER-2=human epidermal growth factor receptor-2, PSM= propensity score matching.

**Table S3: Difference in the demographic and clinical factors between the subjects receiving chemotherapy and without in low risk population.**

Factors	Before matching				After PSM matching			
	Not receiving Chemotherapy	Receiving Chemotherapy	$\chi^2/Z$	<i>P</i> -value	Not receiving Chemotherapy	Receiving Chemotherapy	$\chi^2/Z$	<i>P</i> -value
<b>Age</b>			5.12	0.024			0.028	0.87
≤50 years	201(64.8)	1138(71.3)			201(64.8)	203(65.5)		
>50 years	109(35.2)	459(28.7)			109(35.2)	107(34.5)		
<b>Diameter</b>			0.016	0.90			0.008	0.93
≤2 cm	216(69.7)	1107(69.3)			216(69.7)	217(70.0)		
>2cm	94(30.3)	490(30.7)			94(30.3)	93(30.0)		
<b>Histological differentiation</b>			1.97	0.049			0.194	0.85
Well differentiated	73(23.5)	281(17.6)			73(23.5)	73(23.5)		
Moderately differentiated	209(67.4)	1169(73.2)			209(67.4)	212(68.4)		
Poor differentiated	28(9.0)	147(9.2)			28(9.0)	25(8.1)		
<b>Lymph node metastasis</b>			6.48	0.011			0.186	0.67
N0	285(91.9)	1385(86.7)			285(91.9)	282(91.0)		
N+	25(8.1)	212(13.3)			25(8.1)	28(9.0)		
<b>ER</b>			0.135	0.71			0.207	0.65
Negative	25(8.1)	139(8.7)			25(8.1)	22(7.1)		
Positive	285(91.9)	1458(91.3)			285(91.9)	288(92.9)		
<b>PR</b>			0.316	0.57			1.288	0.26
Negative	40(12.9)	188(11.8)			40(12.9)	31(10.0)		
Positive	270(87.1)	1409(88.3)			270(87.1)	279(90.0)		
<b>HER-2</b>			1.25	0.26			0.444	0.51
Negative	259(83.5)	1291(80.8)			259(83.5)	265(85.5)		
Positive	51(16.5)	306(19.2)			51(16.5)	45(14.5)		
<b>Endocrine therapy</b>			15.62	<0.001			0.077	0.78
No	233(75.2)	1014(63.5)			233(75.3)	230(74.2)		
Yes	77(24.8)	583(36.5)			77(24.8)	80(25.8)		
<b>Radiotherapy</b>			12.55	<0.001			0.113	0.74
No	305(98.4)	1488(93.2)			305(98.4)	306(98.7)		
Yes	5(1.6)	109(6.8)			5(1.6)	4(1.3)		

Abbreviation: ER=estrogen receptor; PR=Progesterone receptor; HER-2=human epidermal growth factor receptor-2, PSM= propensity score matching.

**Table S4: Difference in the demographic and clinical factors between the subjects receiving chemotherapy and without in mediate risk population.**

Factors	Before matching				After PSM matching			
	Not receiving Chemotherapy	Receiving Chemotherapy	$\chi^2/Z$	P-value	Not receiving Chemotherapy	Receiving Chemotherapy	$\chi^2/Z$	P-value
<b>Age</b>			19.06	<0.001			0.009	0.92
≤50 years	86(32.3)	702(46.8)			86(35.2)	85(34.8)		
>50 years	180(67.7)	799(53.2)			158(64.8)	159(65.2)		
<b>Diameter</b>			6.14	0.013			0.993	0.32
≤2 cm	135(50.8)	639(42.6)			113(46.3)	124(50.8)		
>2cm	131(49.2)	862(57.4)			131(53.7)	120(49.2)		
<b>Histological differentiation</b>			0.801	0.42			0.264	0.79
Well differentiated	19(7.1)	64(4.3)			19(7.8)	8(3.3)		
Moderately differentiated	198(74.4)	1162(77.4)			179(73.4)	197(80.7)		
Poor differentiated	49(18.4)	275(18.3)			46(18.8)	39(16.0)		
<b>Lymph node metastasis</b>			24.94	<0.001			0.329	0.57
N0	186(69.9)	802(53.4)			164(67.2)	158(64.8)		
N+	80(30.1)	699(46.6)			80(32.8)	86(35.2)		
<b>ER</b>			2.01	0.16			0.01	0.92
Negative	76(28.6)	495(33.0)			76(31.1)	77(31.6)		
Positive	190(71.4)	1006(67.0)			168(68.9)	167(68.4)		
<b>PR</b>			0.658	0.42			0.076	0.78
Negative	99(37.2)	520(34.6)			98(40.2)	101(41.4)		
Positive	167(62.8)	981(65.4)			146(59.8)	143(58.6)		
<b>HER-2</b>			0.271	0.60			0.263	0.61
Negative	195(73.3)	1123(74.8)			177(72.5)	182(74.6)		
Positive	71(26.7)	378(25.2)			67(27.5)	62(25.4)		
<b>Endocrine therapy</b>			8.60	0.003			0.014	0.91
No	211(79.3)	1059(70.6)			202(82.8)	201(82.4)		
Yes	55(20.7)	442(29.4)			42(17.2)	43(17.6)		
<b>Radiotherapy</b>			36.43	<0.001			0.069	0.79
No	258(97.0)	1239(82.5)			236(96.7)	237(97.1)		
Yes	8(3.0)	262(17.5)			8(3.3)	7(2.9)		

Abbreviation: ER=estrogen receptor; PR=Progesterone receptor; HER-2=human epidermal growth factor receptor-2, PSM= propensity score matching.

**Table S5: Difference in the demographic and clinical factors between the subjects receiving chemotherapy and in high risk population.**

Factors	Before matching				After PSM matching			
	Not receiving Chemotherapy	Receiving Chemotherapy	$\chi^2/Z$	P-value	Not receiving Chemotherapy	Receiving Chemotherapy	$\chi^2/Z$	P-value
<b>Age</b>			23.66	<0.001			0.125	0.72
≤50 years	41(14.5)	438(28.3)			41(15.1)	44(16.2)		
>50 years	242(85.5)	1109(71.7)			231(84.9)	228(83.8)		
<b>Diameter</b>			7.53	0.006			0.806	0.37
≤2 cm	67(23.7)	261(16.9)			62(22.8)	71(26.1)		
>2cm	216(76.3)	1286(83.1)			210(77.2)	201(73.9)		
<b>Histological differentiation</b>			0.115	0.91			0.117	0.91
Well differentiated	5(1.8)	15(1.0)			4(1.5)	7(2.5)		
Moderately differentiated	203(71.7)	1126(72.8)			197(72.4)	193(71.0)		
Poor differentiated	75(26.5)	406(26.2)			71(26.1)	72(26.5)		
<b>Lymph node metastasis</b>			40.96	<0.001			0.034	0.85
N0	96(33.9)	269(17.4)			88(32.4)	86(31.6)		
N+	187(66.1)	1278(82.6)			184(67.6)	186(68.4)		
<b>ER</b>			0.954	0.33			0.265	0.61
Negative	142(50.2)	825(53.3)			135(49.6)	141(51.8)		
Positive	141(49.8)	722(46.7)			137(50.4)	131(48.2)		
<b>PR</b>			4.97	0.026			0.119	0.73
Negative	151(53.4)	935(60.4)			148(54.4)	152(55.9)		
Positive	132(46.6)	612(39.6)			124(45.6)	120(44.1)		
<b>HER-2</b>			0.003	0.96			0.667	0.41
Negative	190(67.1)	1036(67.0)			185(68.0)	176(64.7)		
Positive	93(32.9)	511(33.0)			87(32.0)	96(35.3)		
<b>Endocrine therapy</b>			2.688	0.10			0.136	0.71
No	241(85.2)	1254(81.1)			232(85.3)	235(86.4)		
Yes	42(14.8)	293(18.9)			40(14.7)	37(13.6)		
<b>Radiotherapy</b>			75.09	<0.001			0.189	0.66
No	273(96.5)	1124(72.7)			262(96.3)	260(95.6)		
Yes	10(3.5)	423(27.3)			10(3.7)	12(4.4)		

Abbreviation: ER=estrogen receptor; PR=Progesterone receptor; HER-2=human epidermal growth factor receptor-2, PSM= propensity score matching.