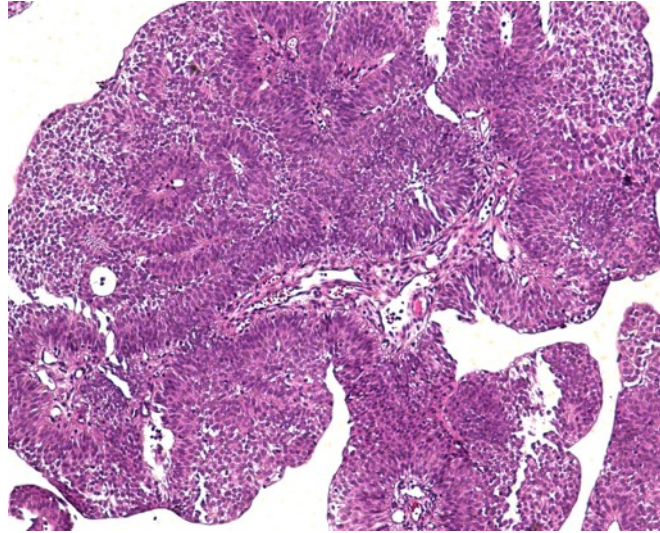
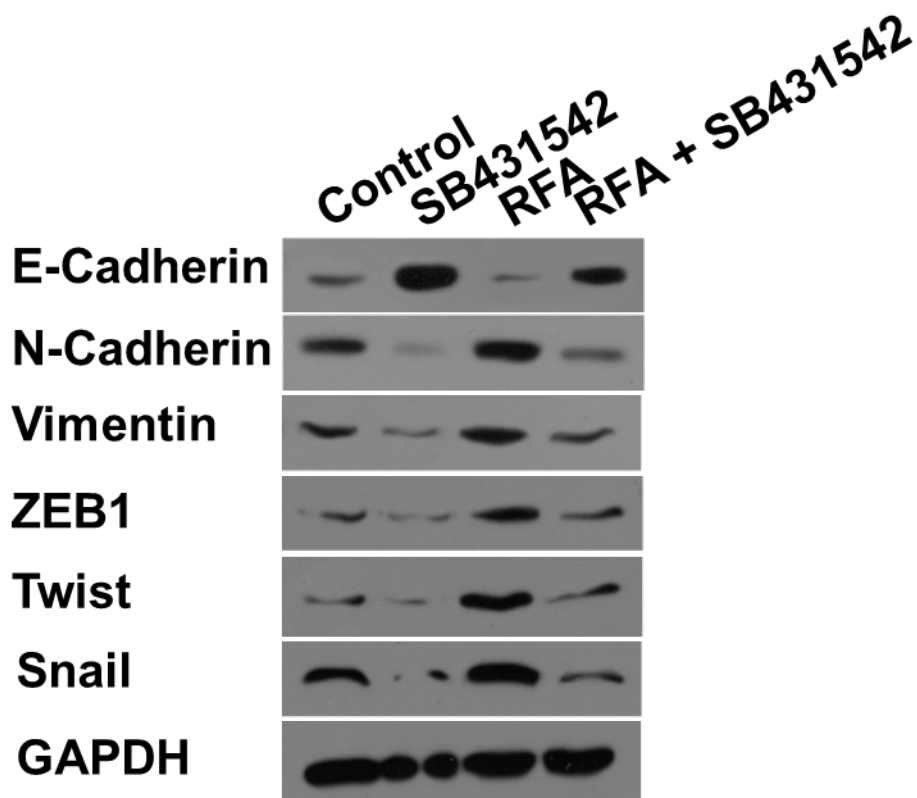


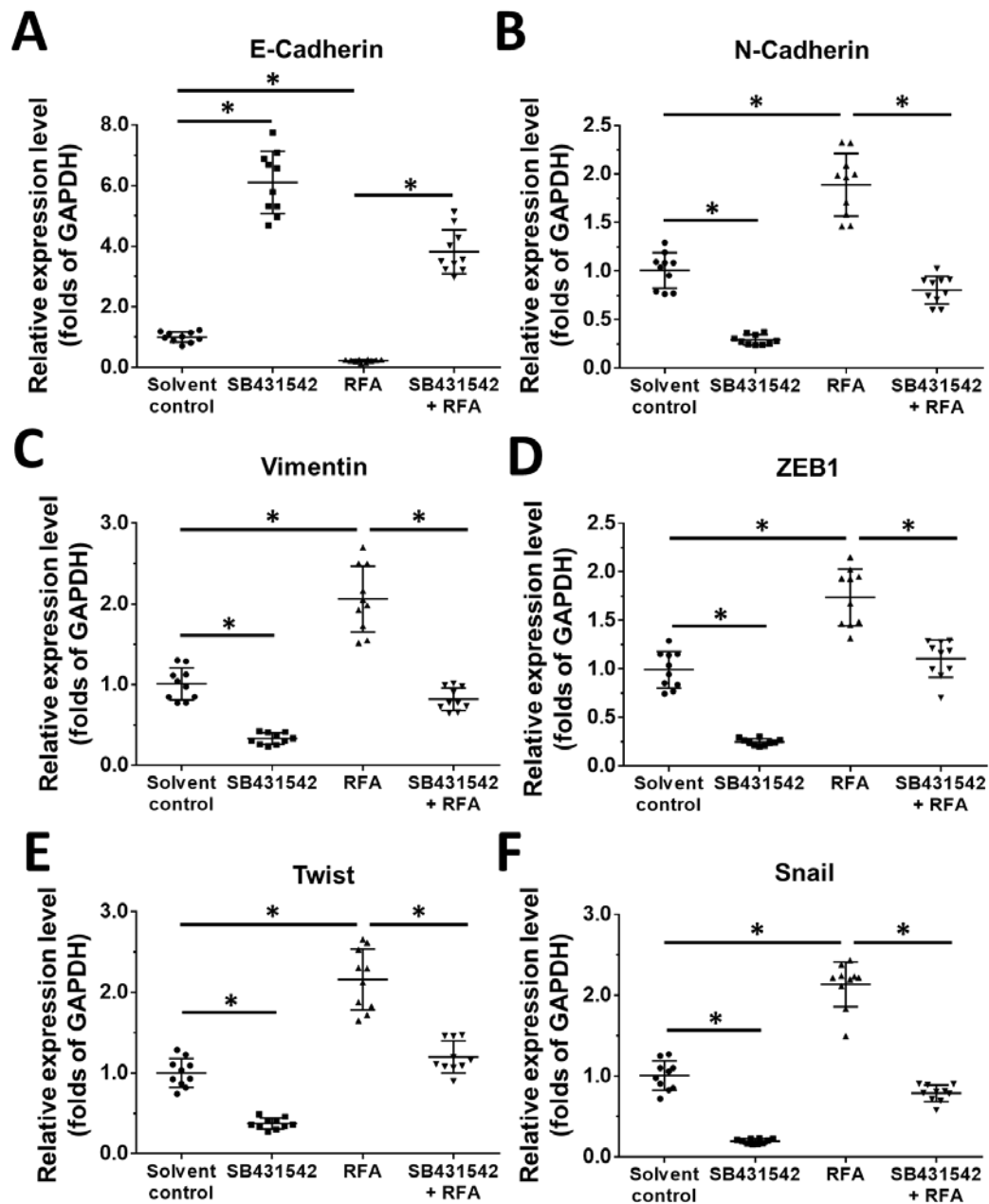
Supplemental materials:



Supplemental Figure 1. The represented pathological analysis image of clinical specimens of BC tissues



Supplemental Figure 2. The expression of EMT-related protein in subcutaneous tumor tissues of Figure 4. The tumor tissues were harvested for western blot experiments. The expression level of EMT-related proteins were examined by their antibodies. Results were shown as represented image of western blot (the 1st / No. 1 tumor tissue). Abbreviation: EMT, epithelial-mesenchymal transition; ZEB1, zinc finger E-box binding homeobox 1;



Supplemental Figure 3. The expression of EMT-related protein in subcutaneous tumor tissues of Figure 4. The tumor tissues were harvested for western blot experiments. The expression level of EMT-related proteins were examined by their antibodies. Results were shown as the quantitative results from all tumor tissues (E-Cadherin [A], N-Cadherin [B], Vimentin [C], ZEB1 [D], Twist [E], Snail [F]). Abbreviation: EMT, epithelial-mesenchymal transition; ZEB1, zinc finger E-box binding homeobox 1; * $P < 0.05$

Supplemental Table 1 The IC_{50} values ($\mu\text{mol/L}$) of SB431542 on the luciferase reporters of TGF β /Smad pathway

PDCs of BC	3TP-Luc	SBE-Luc
PDCs	IC_{50} values ($\mu\text{mol/L}$) of SB431542 on the luciferase reporters of TGF β /Smad pathway	
No. 1	0.31 \pm 0.08	0.44 \pm 0.10
No. 2	0.20 \pm 0.06	0.18 \pm 0.05
No. 3	0.21 \pm 0.01	0.15 \pm 0.06
No. 4	0.10 \pm 0.02	0.11 \pm 0.00
No. 5	0.25 \pm 0.09	0.23 \pm 0.04

Abbreviation: BC, Bladder cancer; PDCs, Patients-derived cells

Supplemental Table 2 The IC_{50} values ($\mu\text{mol/L}$) of SB431542 on the luciferase reporters of TGF β /Smad pathway in BC cell lines

	3TP-Luc	SBE-Luc
PDCs of BC	IC_{50} values ($\mu\text{mol/L}$) of SB431542 on the luciferase reporters of TGF β /Smad pathway	
T24	0.58 \pm 0.20	0.60 \pm 0.08
5637	0.45 \pm 0.11	0.51 \pm 0.15
RT4	0.30 \pm 0.14	0.44 \pm 0.13