

Figure S1. The results of incline plate test.

Notes: Incline plate test recorded at 1, 3, 7, 14, 21, and 28 days post-SCI in the three groups. Functional recovery improved gradually over time throughout the evaluation period in both the SCI and SCI + Exo groups. Compared to the SCI group, rats of the SCI + Exo group showed significantly greater improvements in functional activity over the observation periods. # $p < 0.05$.

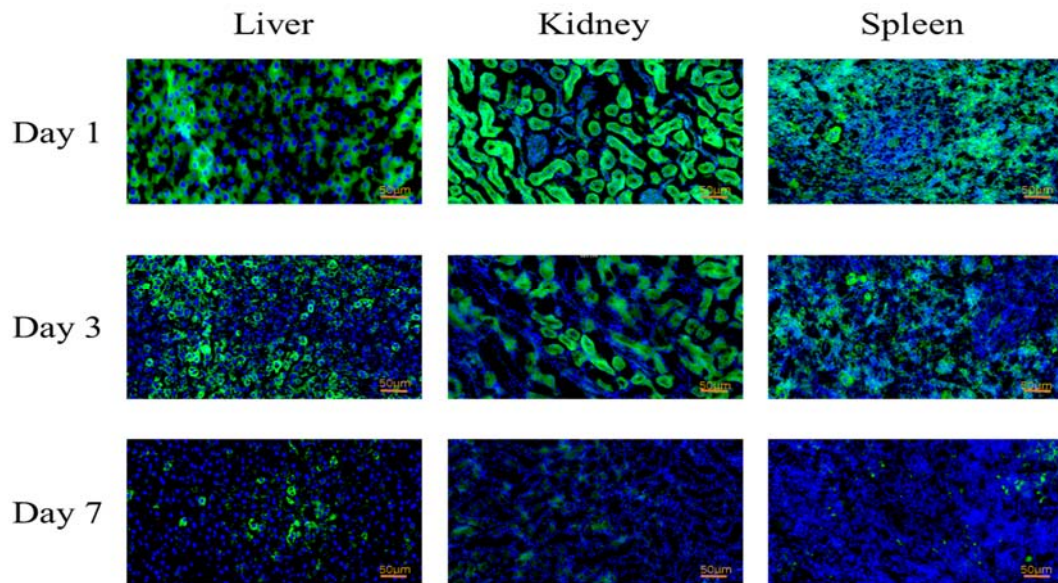


Figure S2. BMSCs-Exo detection in other organs (liver kidney and Spleen)

Notes: The PKH67-labeled MSCs-Exos were injected through tail vein 1 h after SCI. PKH67-labeled MSCs-Exos was observed in liver, kidney and spleen at day 1, day 3 and day 7 after SCI. The fluorescence significantly decreased at day 7, when compared with day 1 and day 3. PKH67-labeled MSCs-Exos: green; DAPI: blue.