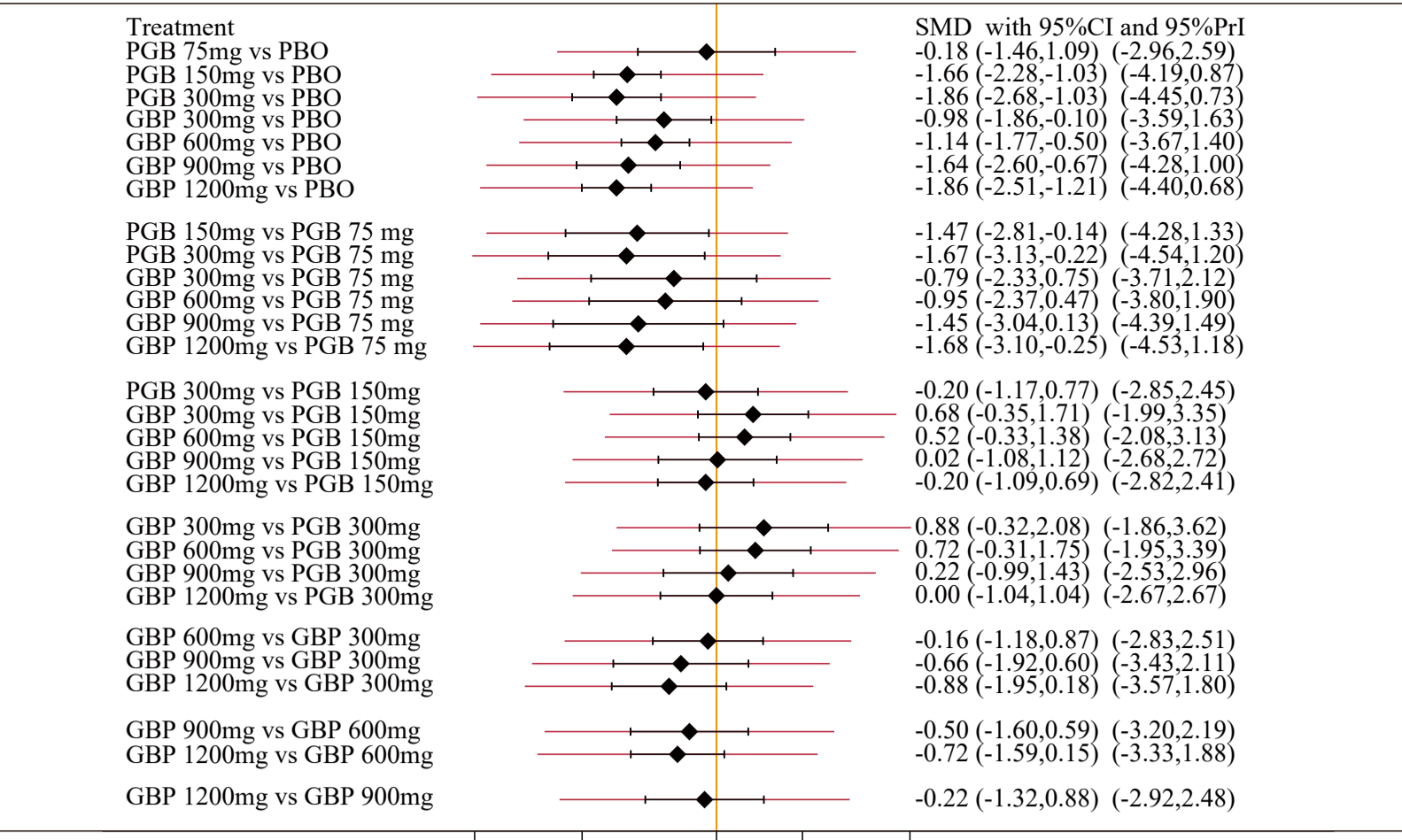
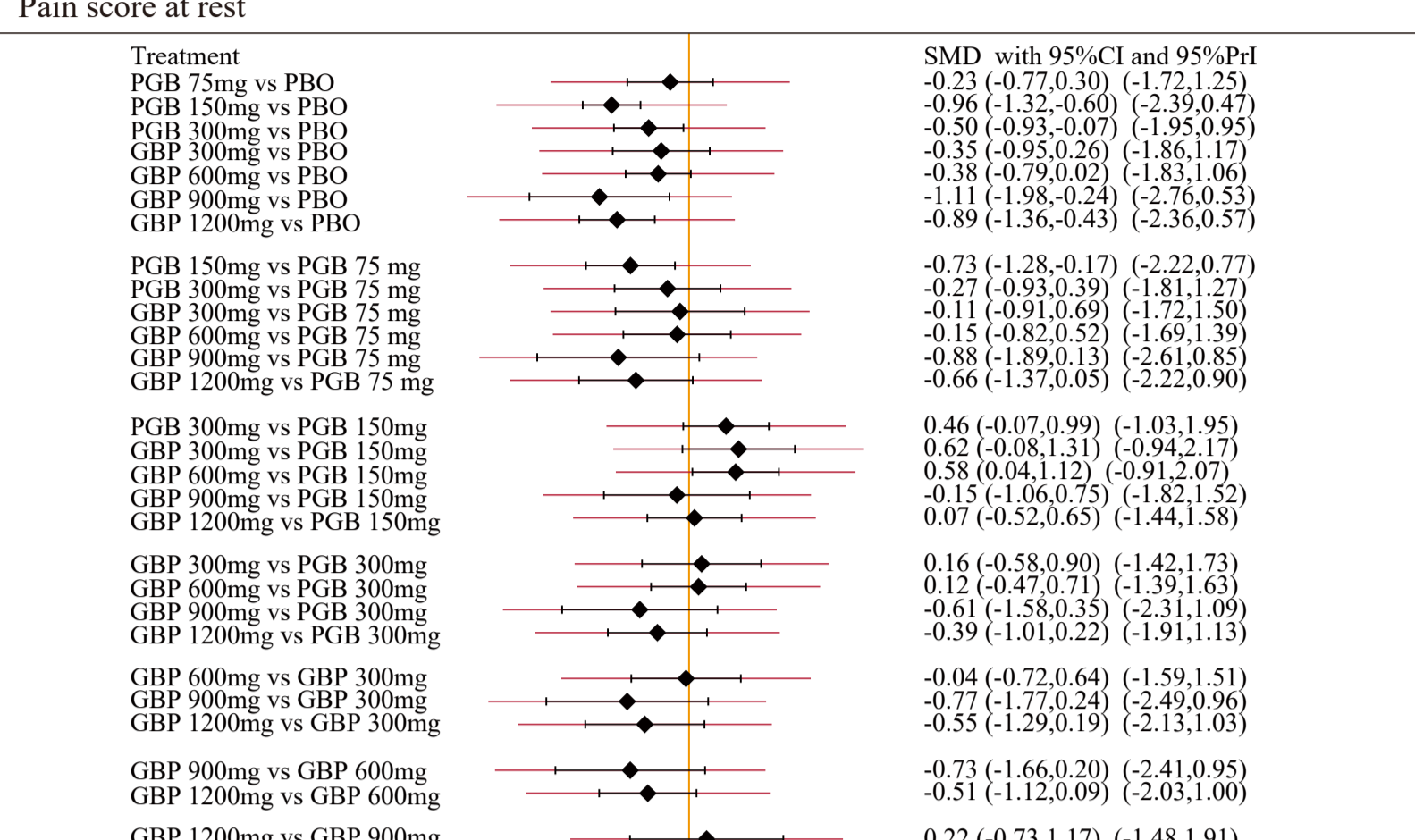


## Opioid consumption



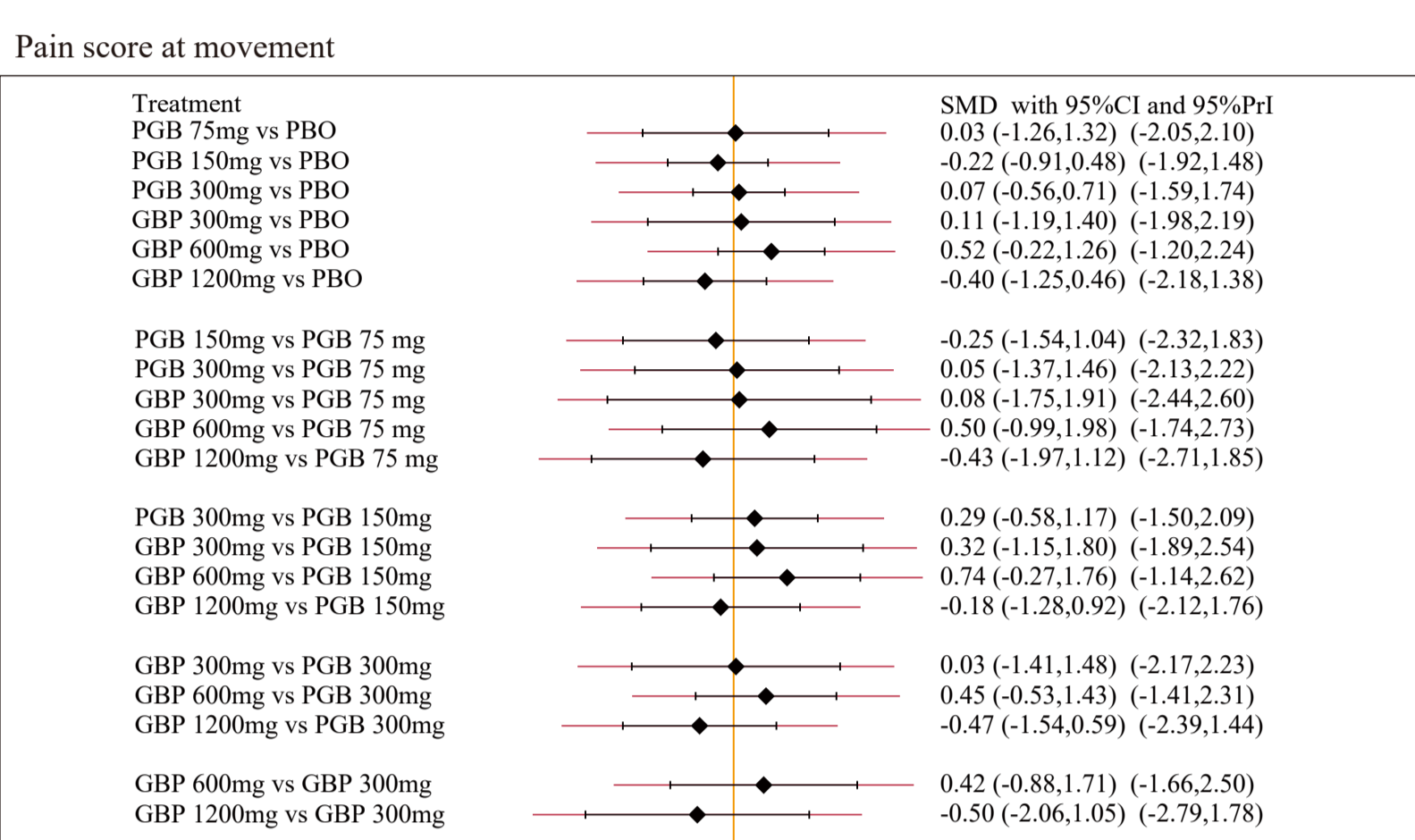
Heterogeneity variance = 1.49

## Pain score at rest



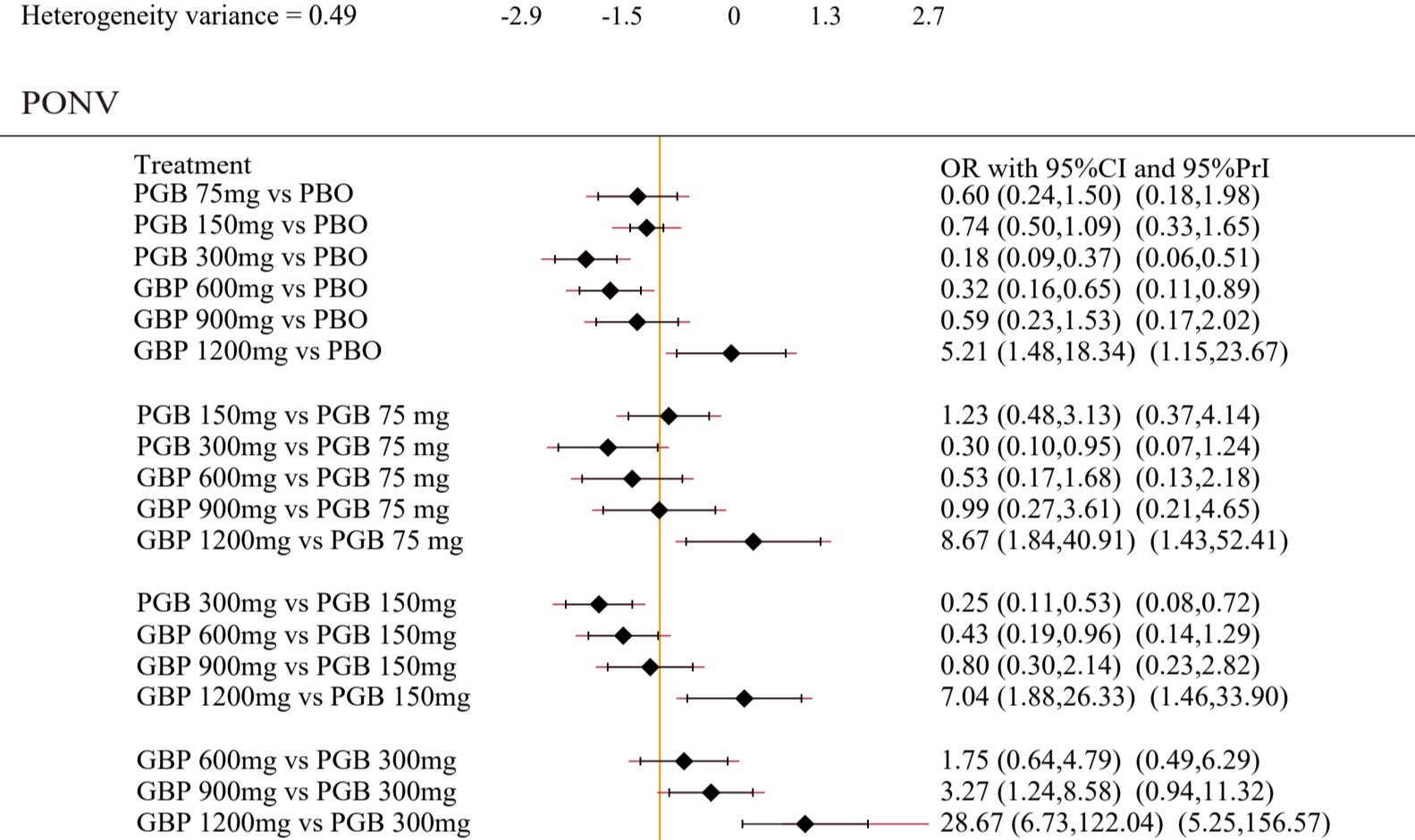
Heterogeneity variance = 0.47

## Pain score at movement



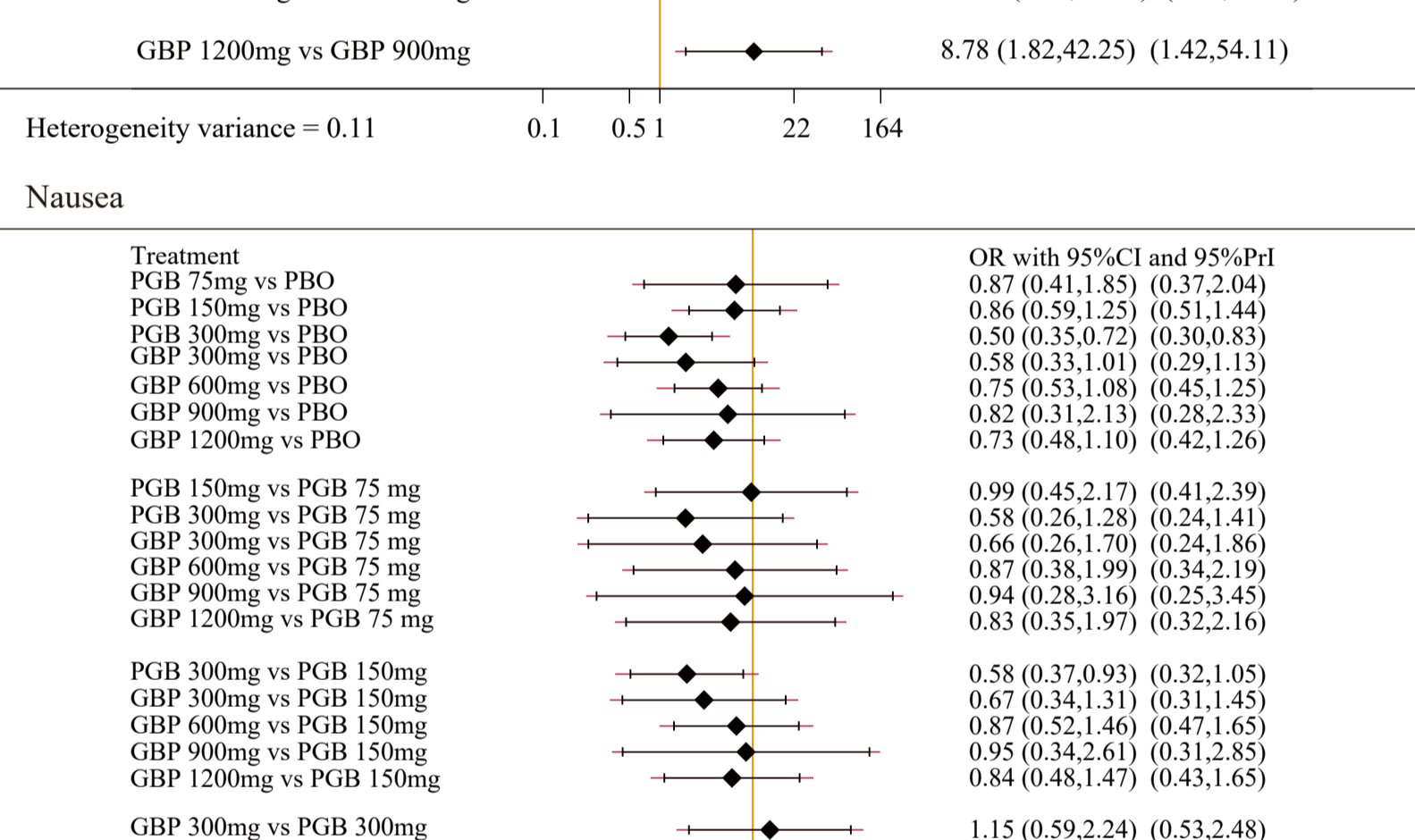
Heterogeneity variance = 0.49

## PONV



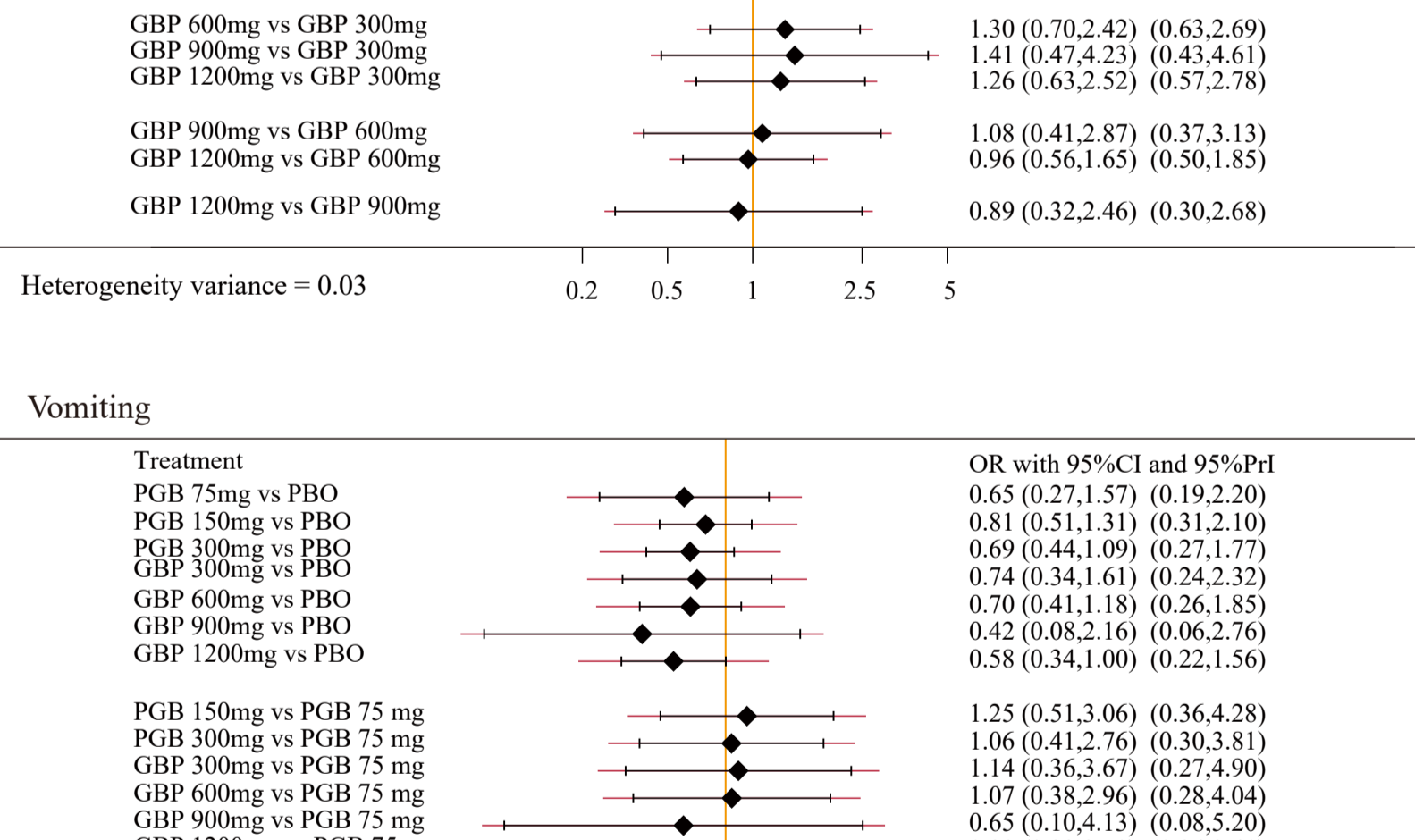
Heterogeneity variance = 0.11

## Nausea



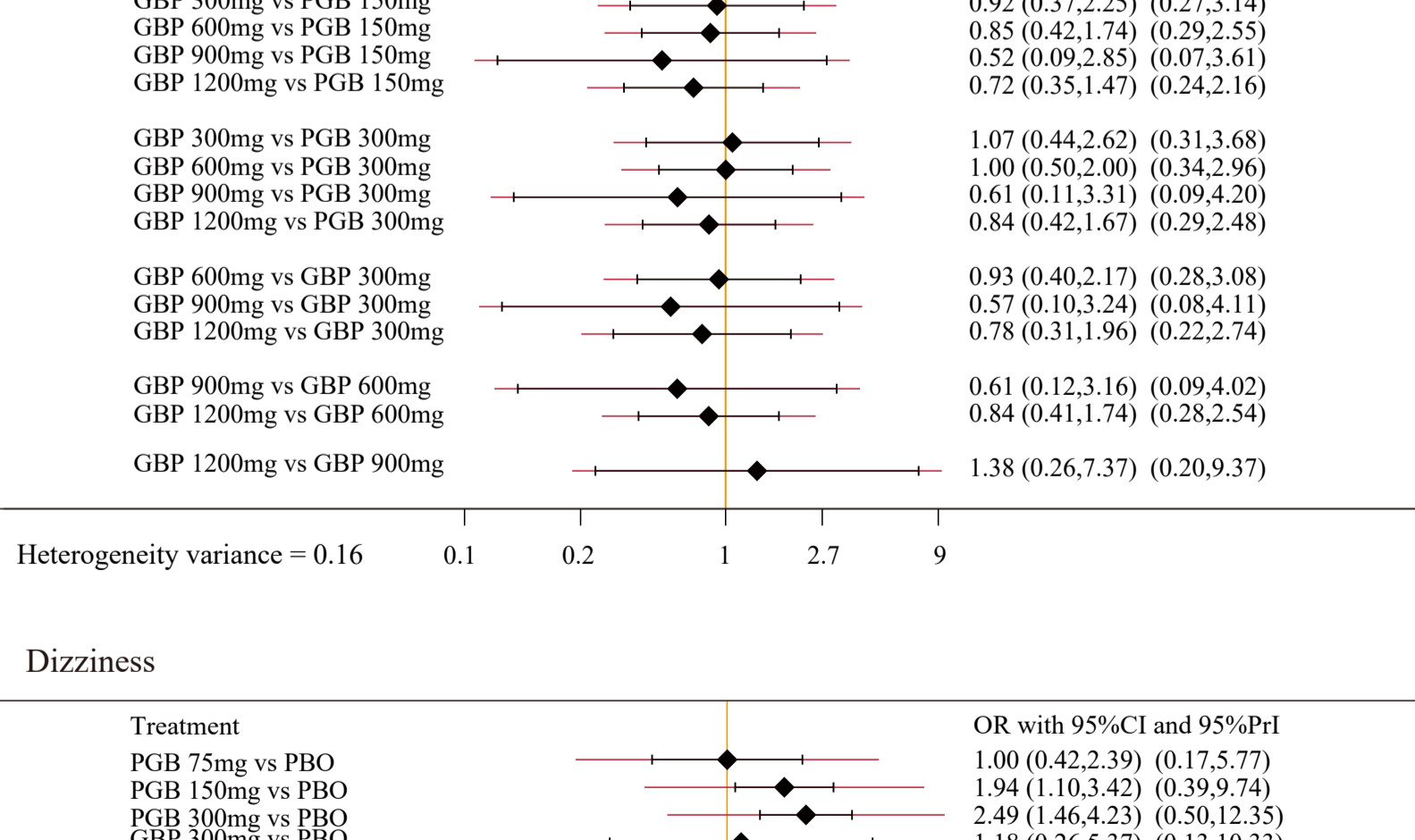
Heterogeneity variance = 0.03

## Vomiting



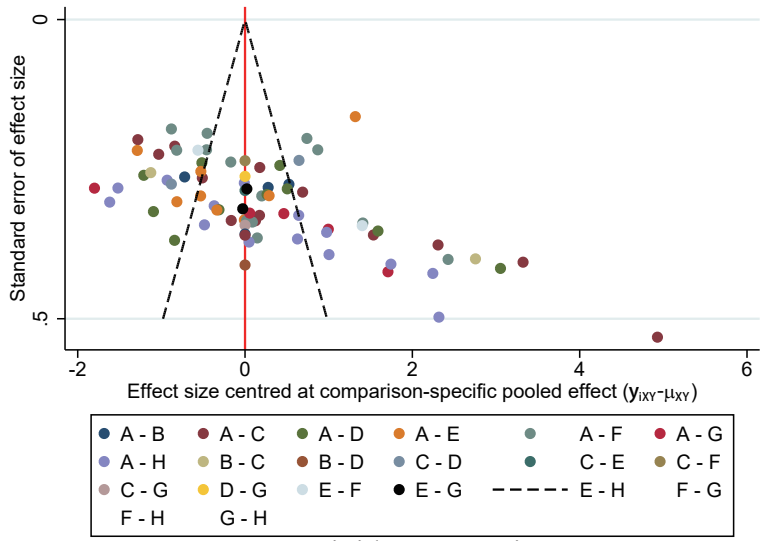
Heterogeneity variance = 0.16

## Dizziness

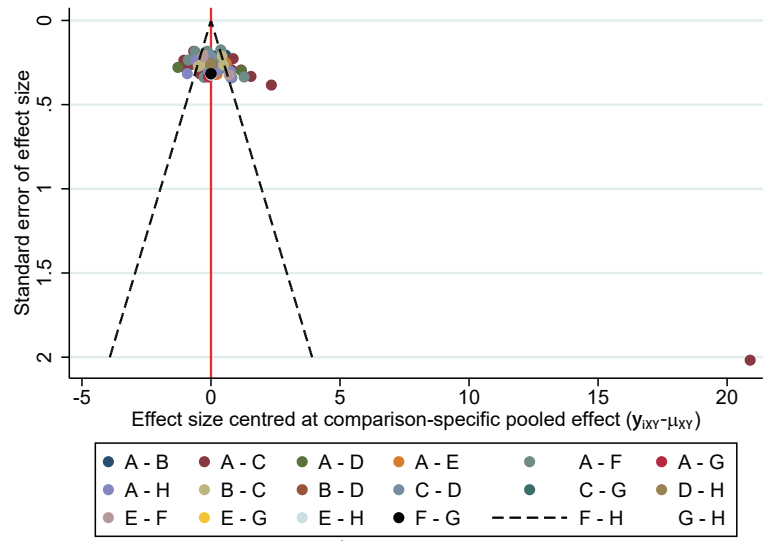


Heterogeneity variance = 0.55

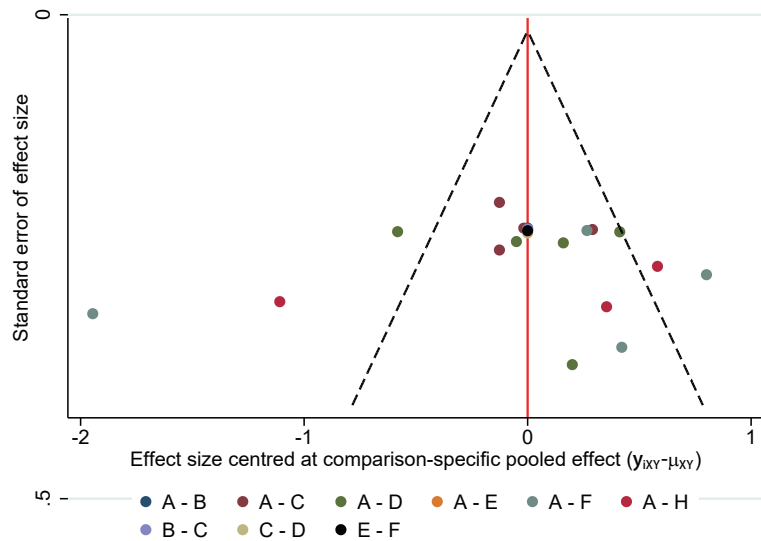
PBO: Placebo; PGB: Pregabalin; GBP: Gabapentin



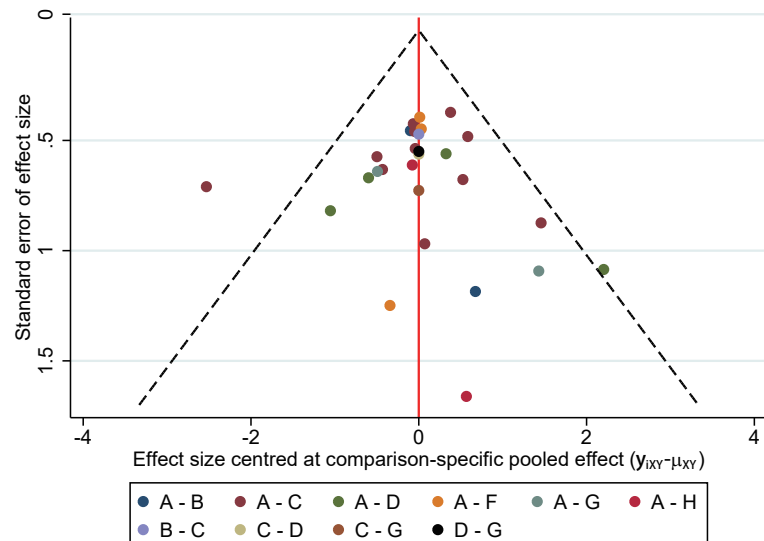
Opioid consumption



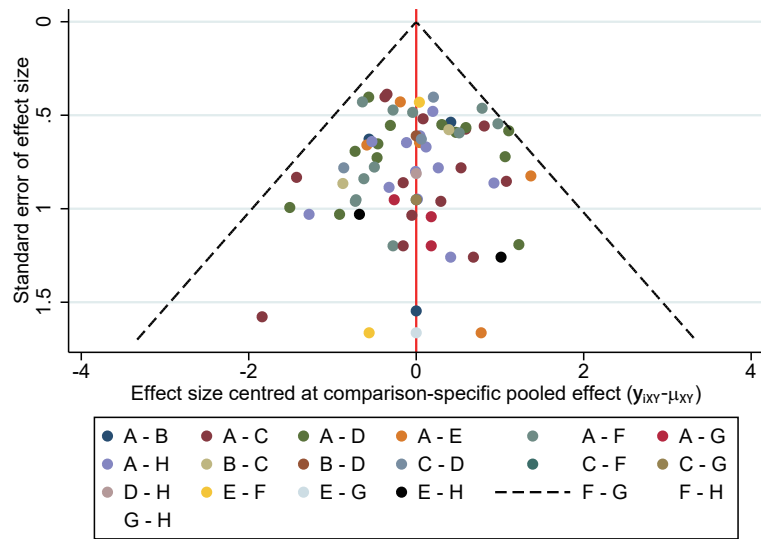
Pain score at rest



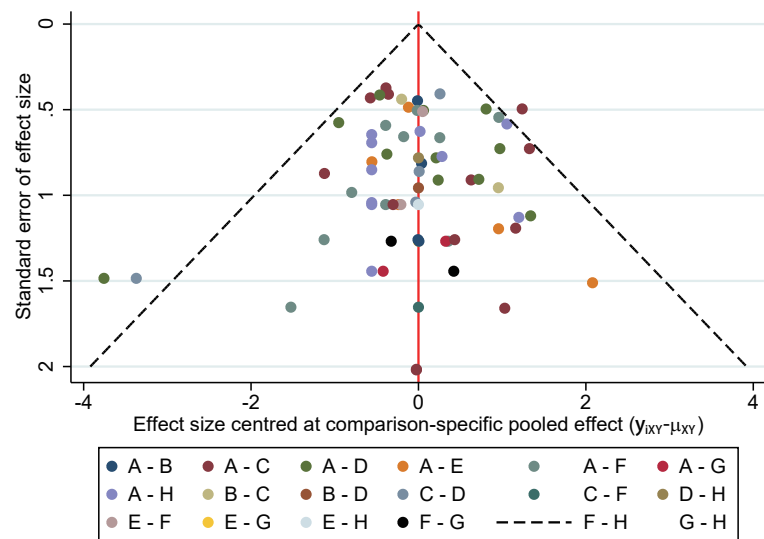
Pain score with movement



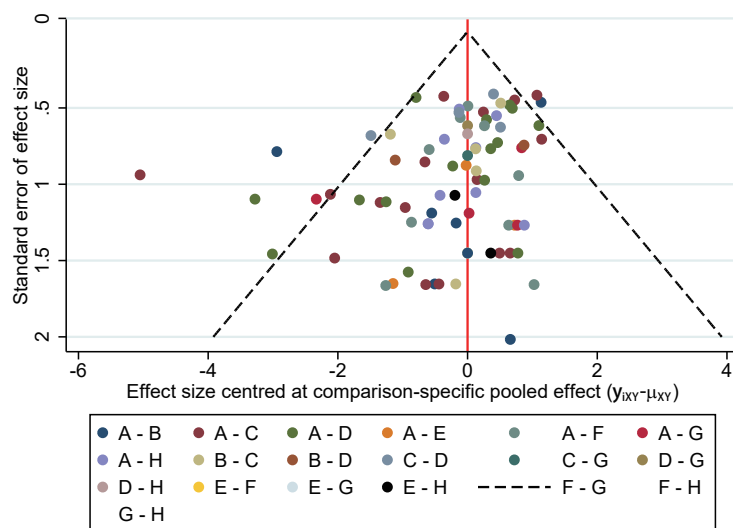
PONV



Nausea



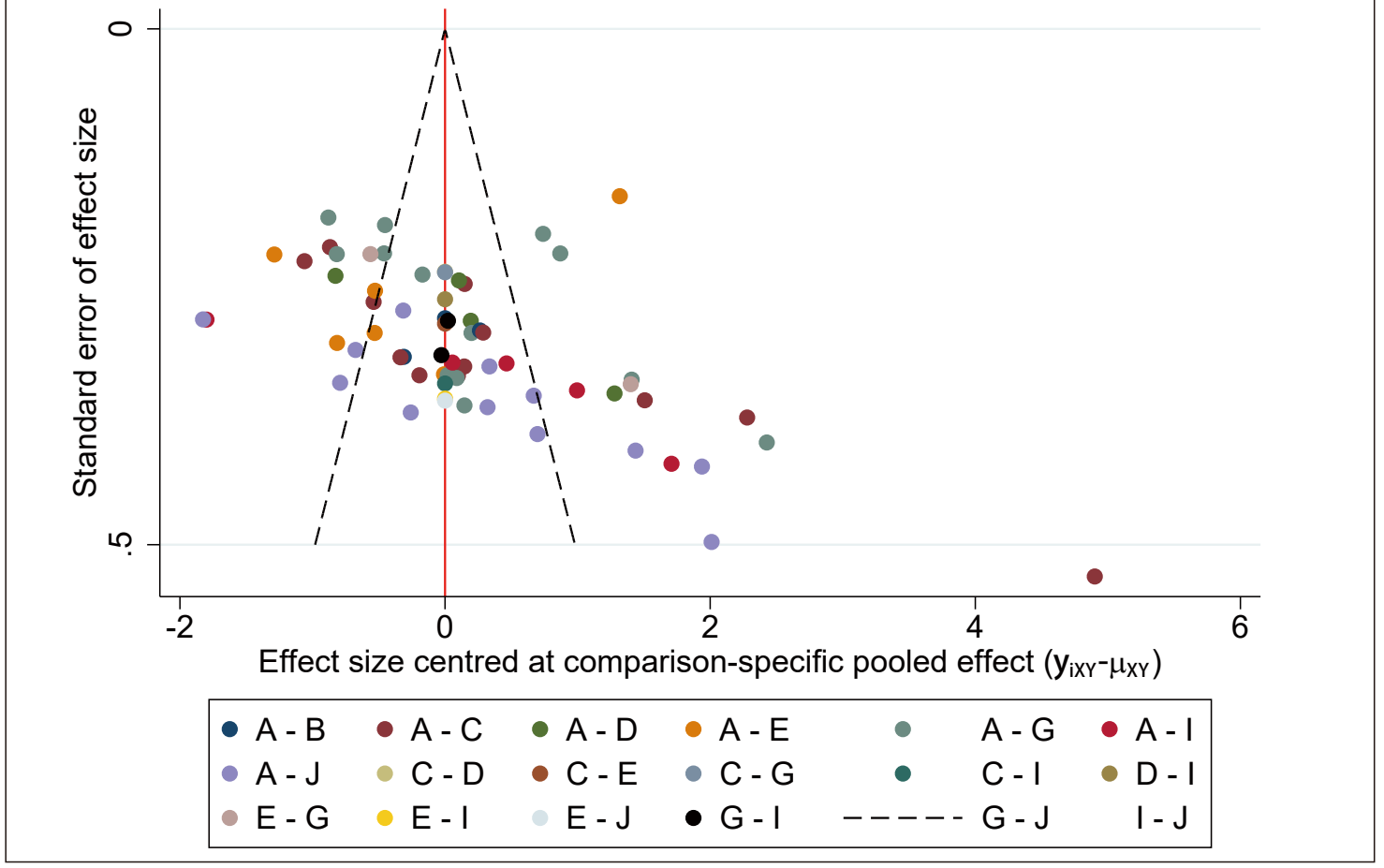
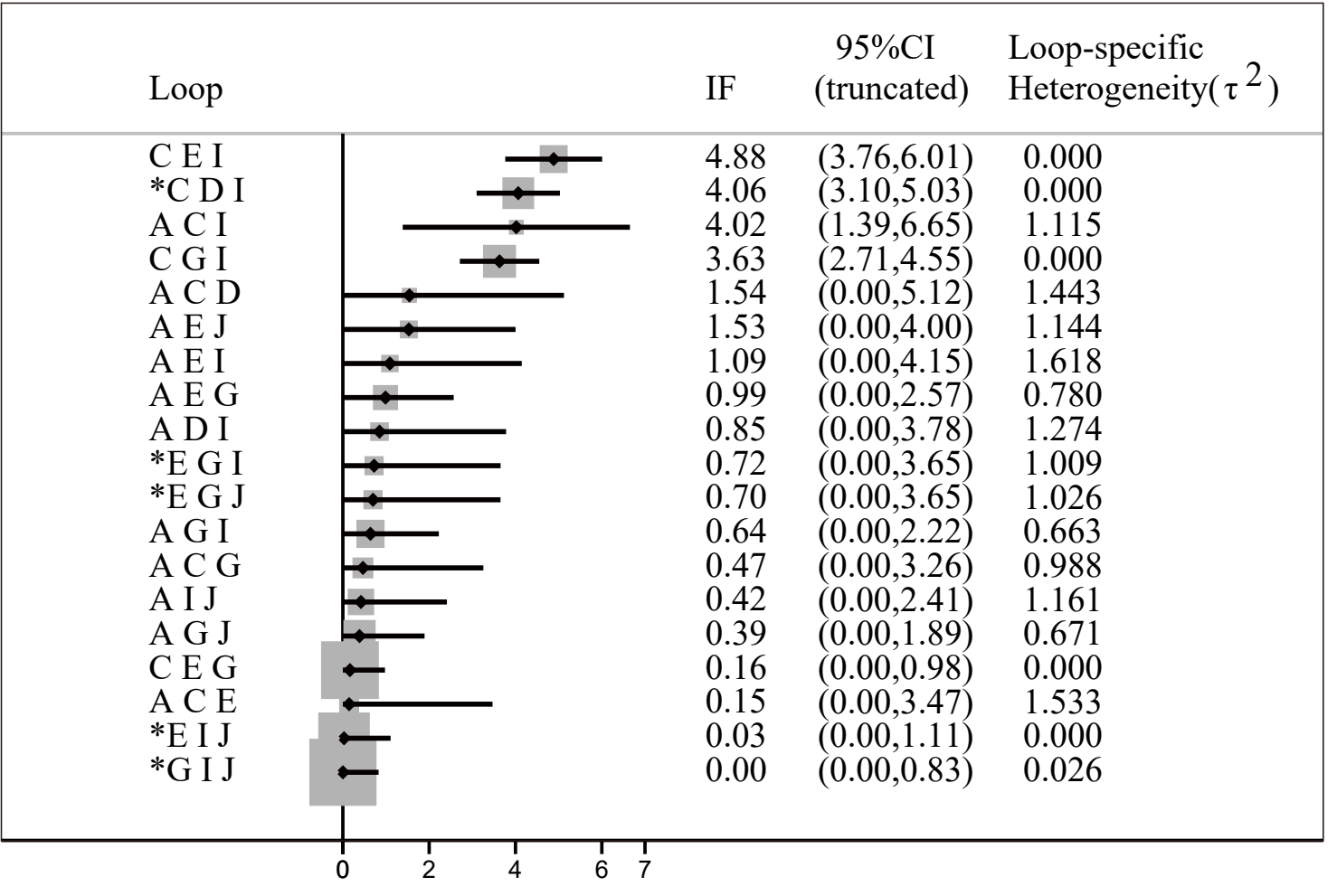
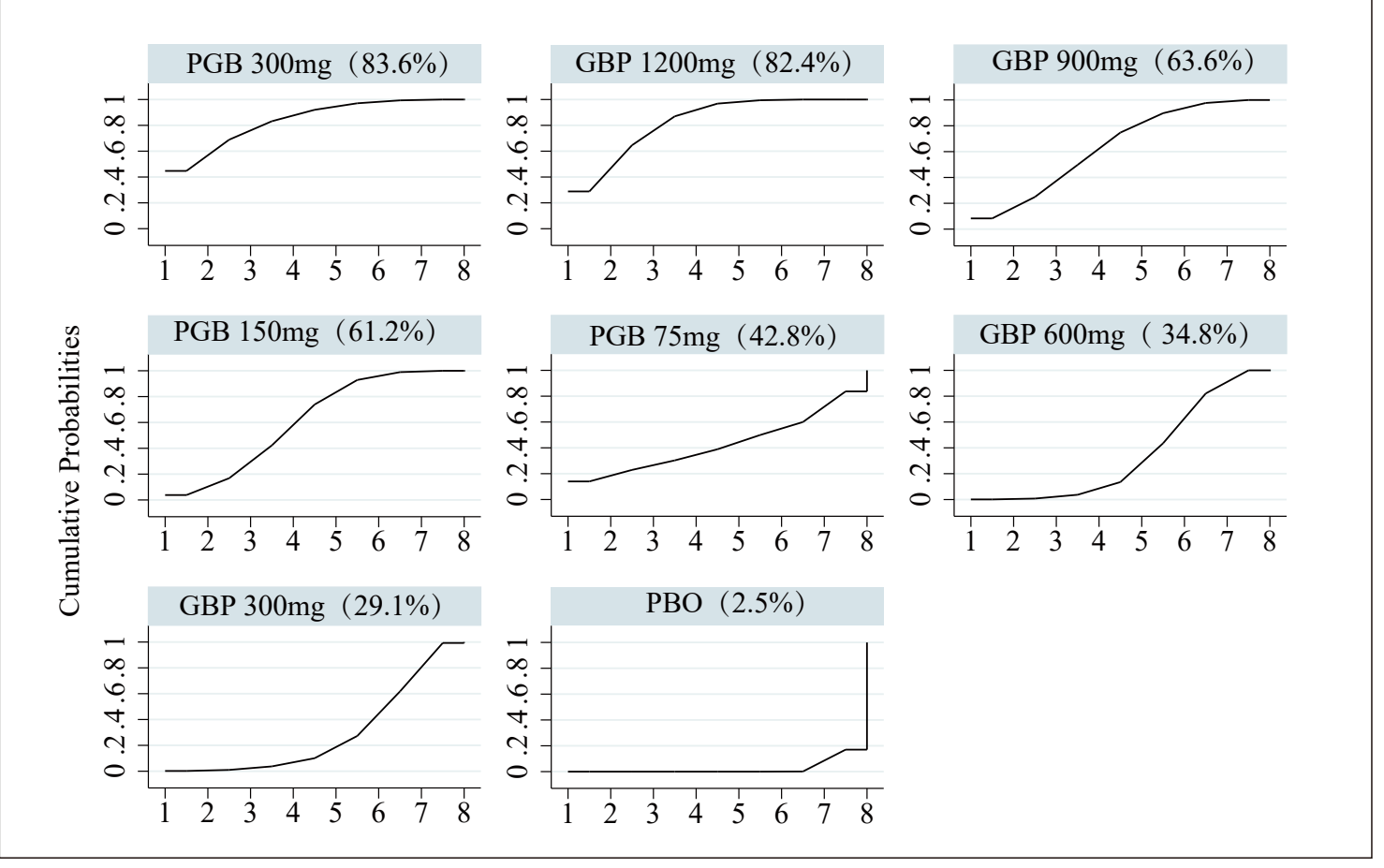
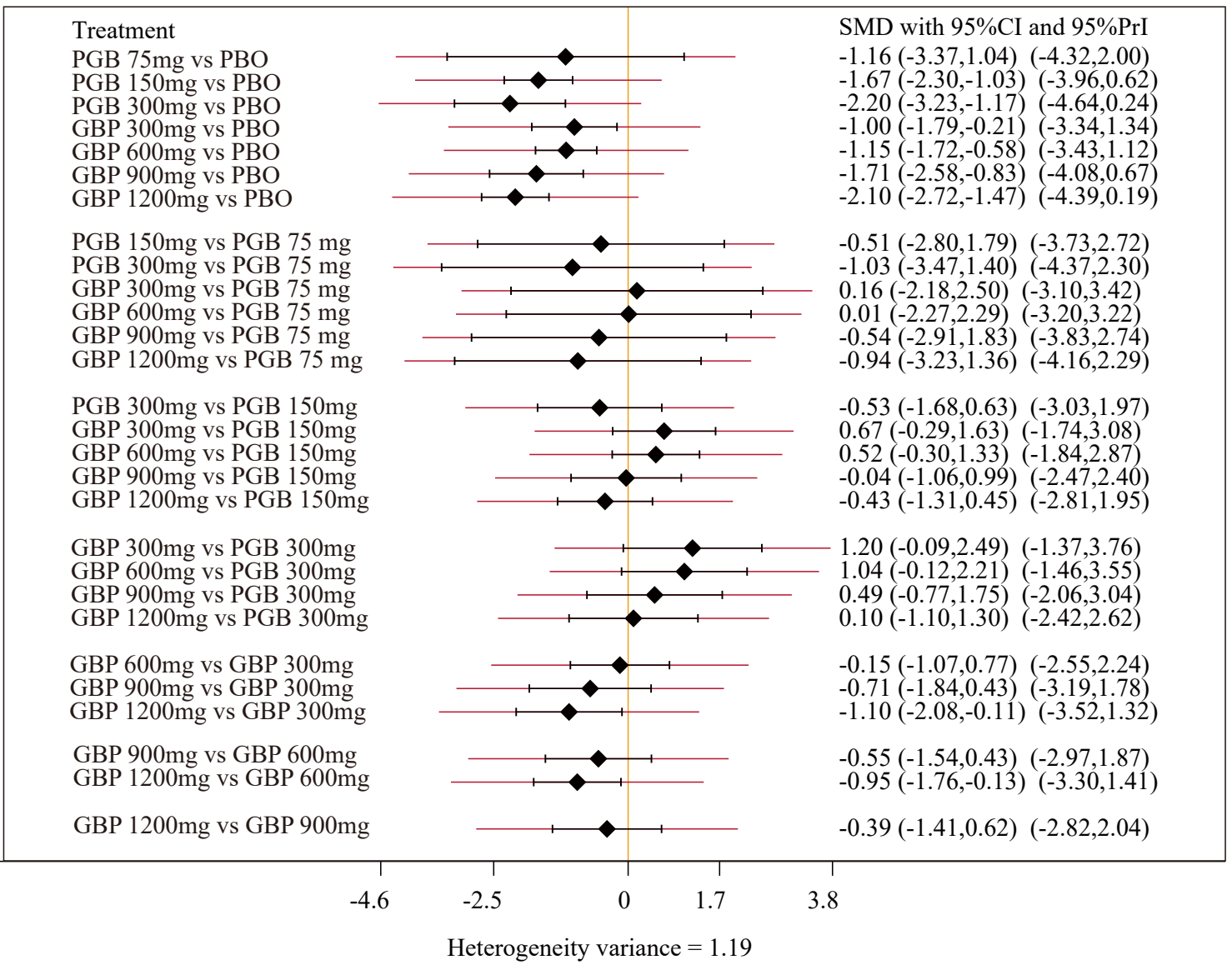
Vomiting



Dizziness

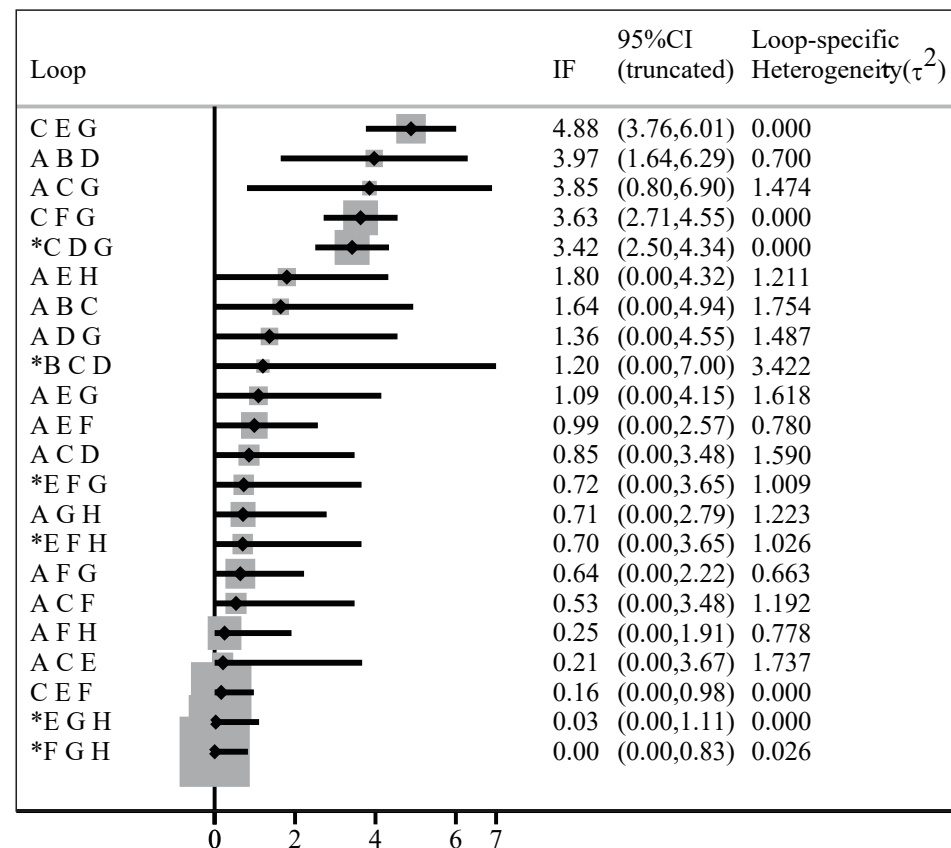


Supplementary material Figure S3

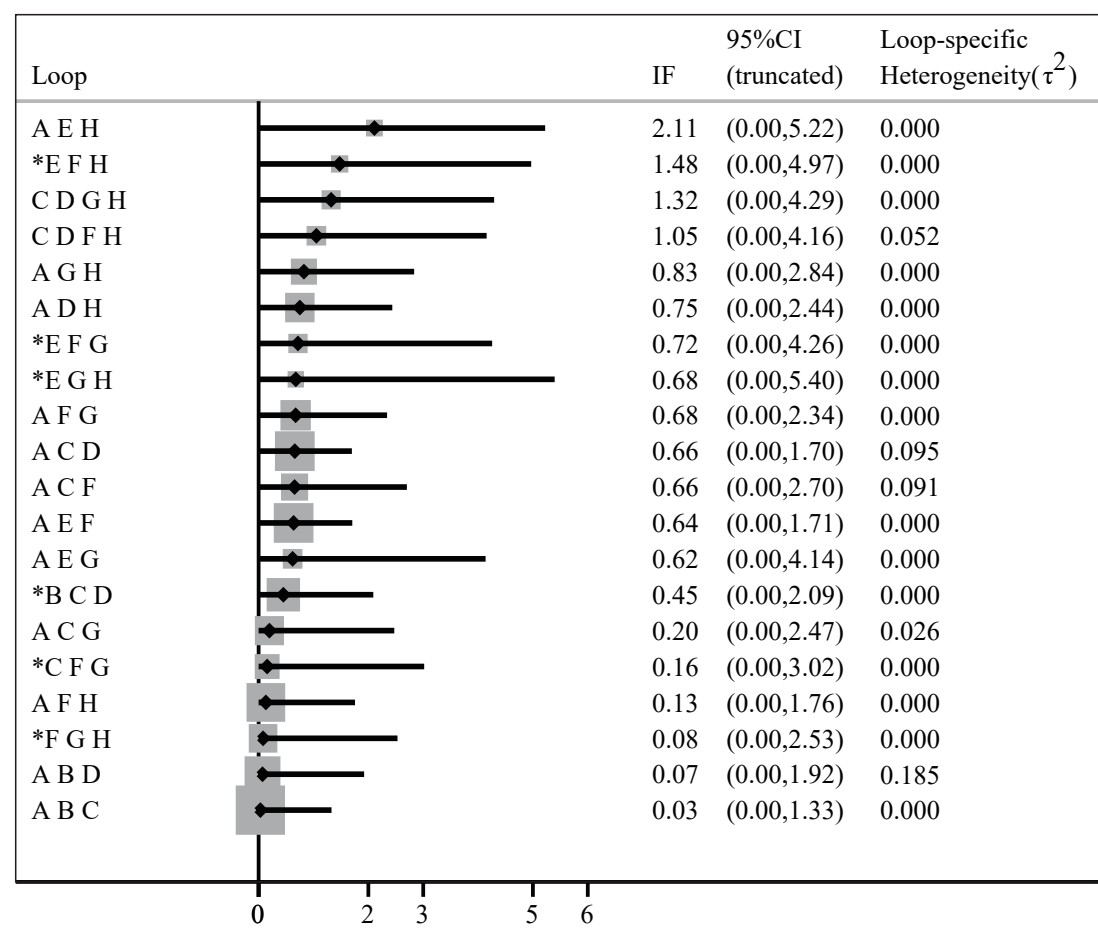


PBO: Placebo; PGB: Pregabalin; GBP: Gabapentin

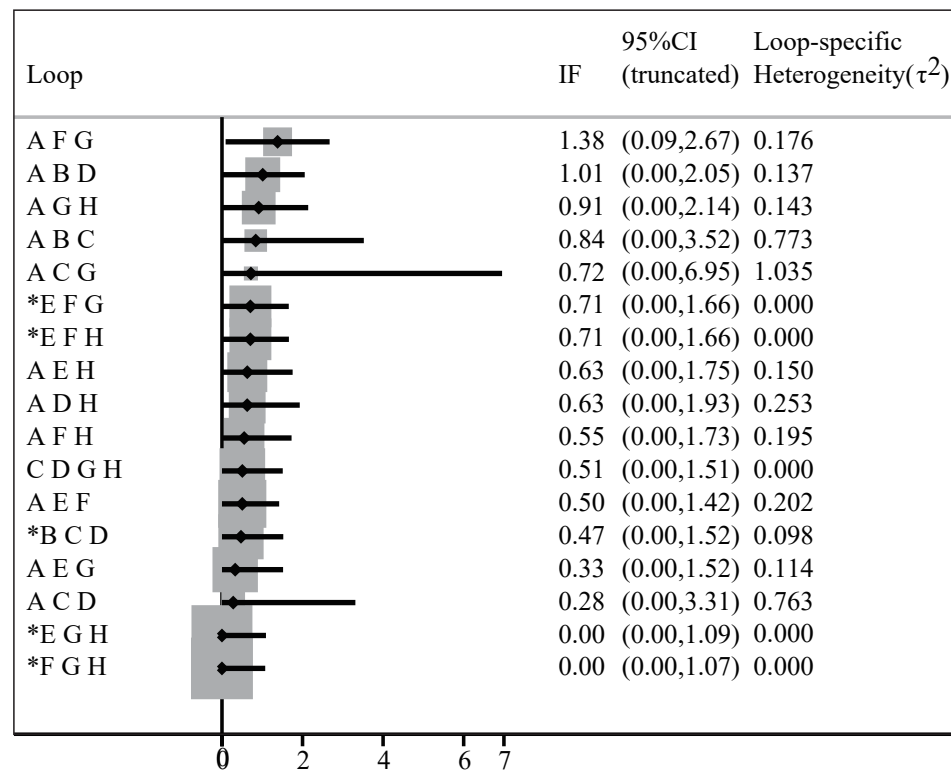
Opioid consumption



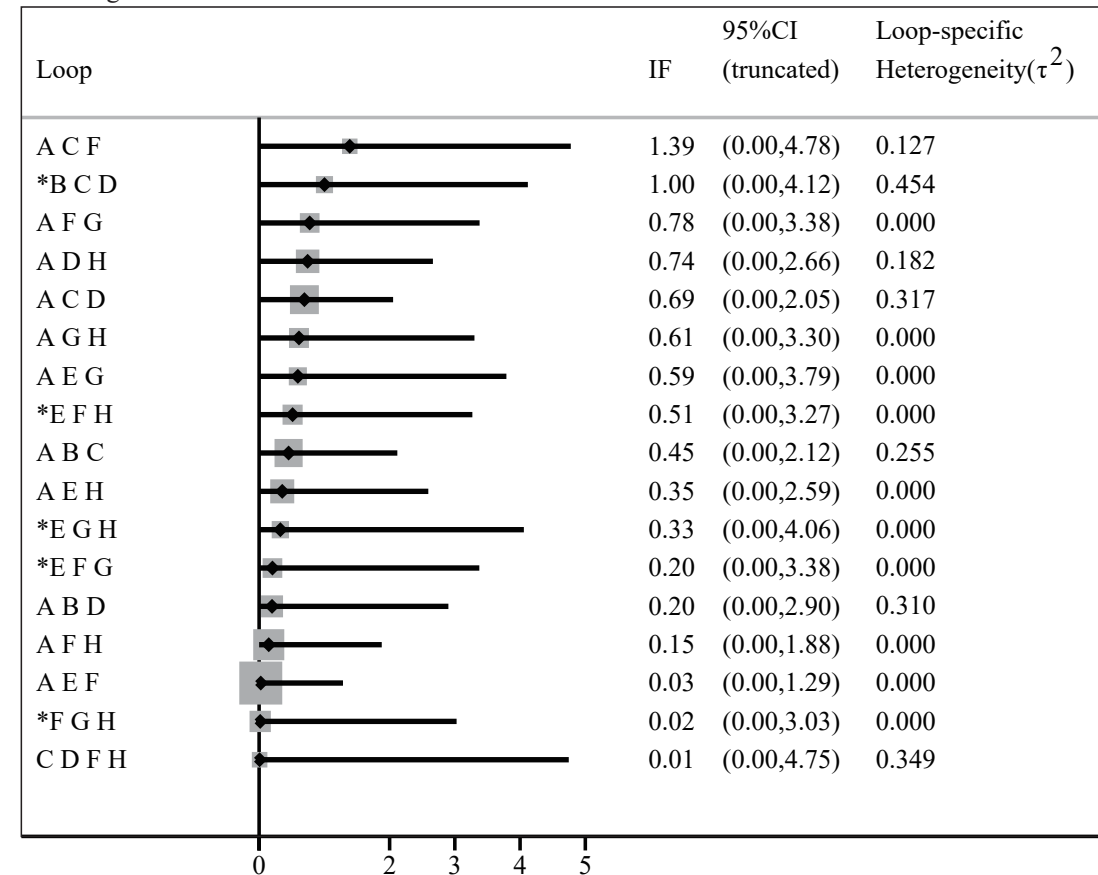
Nausea



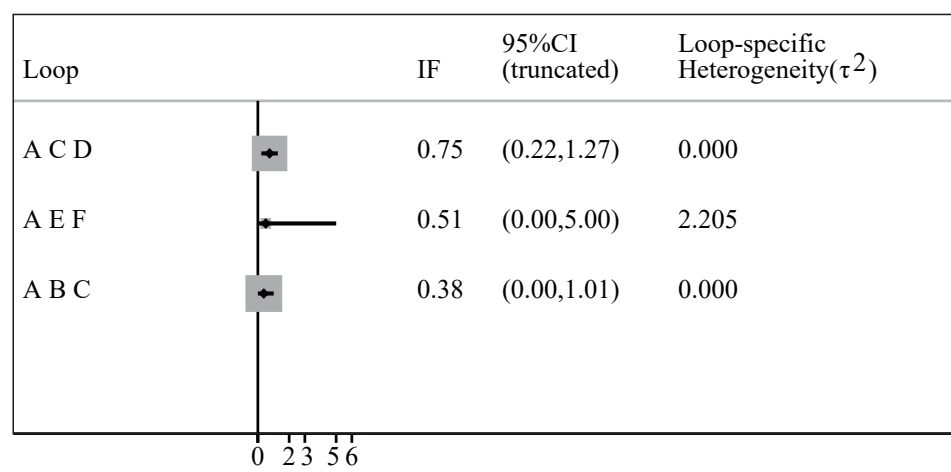
Pain score at rest



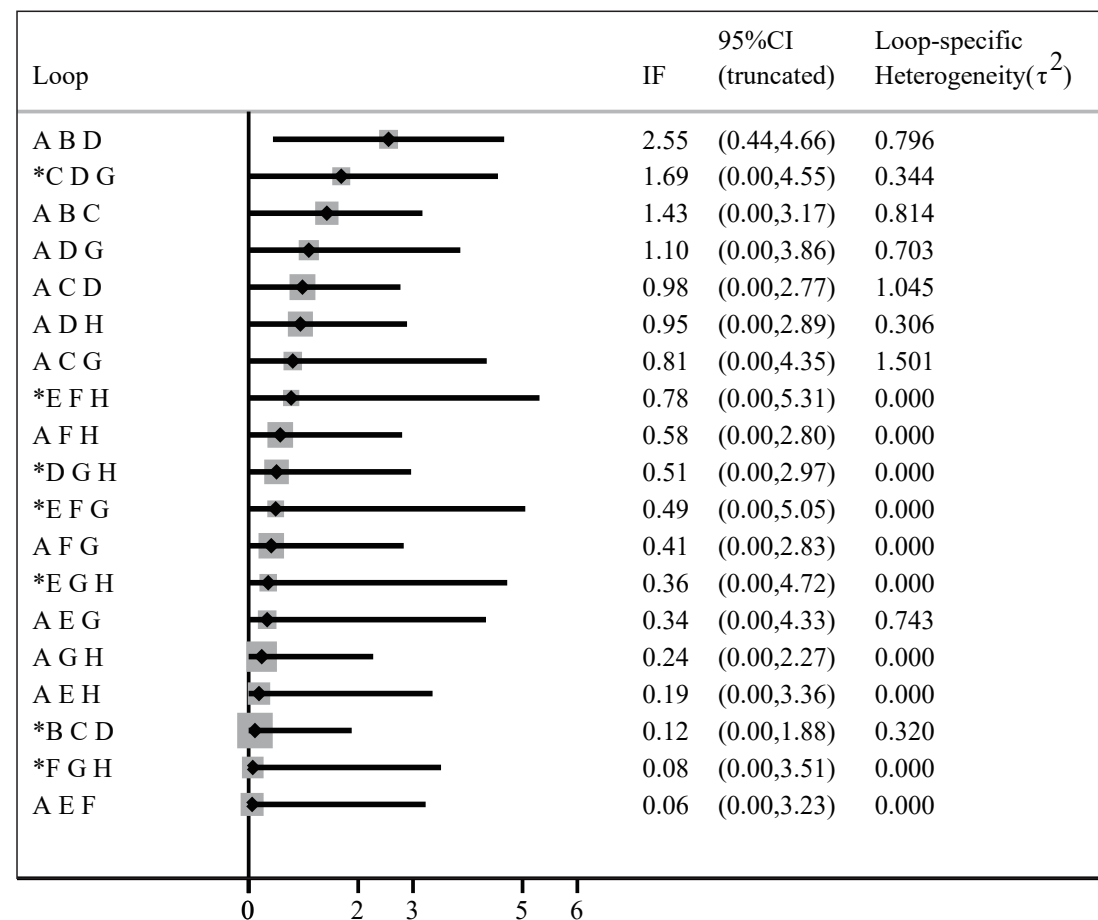
Vomiting



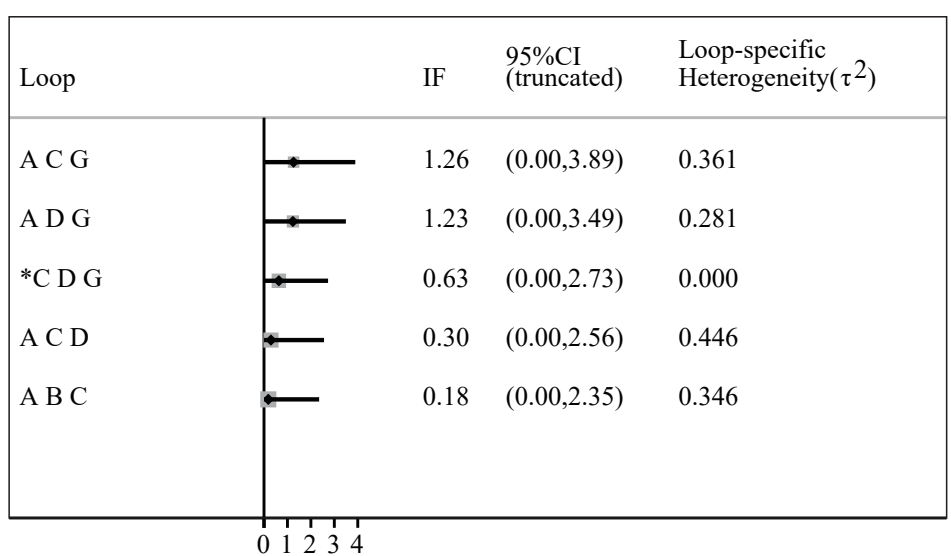
Pain score with movement



Dizziness



PONV



Note: \* These loops are formed only by multi-arm trial(s)

A: PBO; B: PGB 75mg; C: PGB 150mg; D: PGB 300mg; E: GBP 300mg; F: GBP 600mg; G: GBP 900mg; H: GBP 1200mg.

Supplementary material Figure S5

		Direct comparisons in the network																														
		A_B	A_C	A_D	A_E	A_F	A_G	A_H	B_C	B_D	B_E	B_F	B_G	B_H	C_D	C_E	C_F	C_G	C_H	D_E	D_F	D_G	D_H	E_F	E_G	E_H	F_G	F_H	G_H			
Network meta-analysis estimates	Mixed estimates	A_B	59.6	1.9	6.5	0.7	2.4	0.9	1.7	1.1	13.0	1.0	0.1	0.6	0.5	5.5	0.1	0.7	1.8	1.5	0.3	1.9										
		A_C	1.3	24.0	3.1	4.8	17.1	2.5	5.0	0.4	0.9	2.1	7.4	17.6	6.2	1.9	0.1	0.6	1.8	0.1	0.8	2.3										
		A_D	8.5	4.1	27.9	2.0	6.3	3.7	9.7	0.1	8.5	3.5	12.6	4.5	0.4	3.0	1.7	8.0	10.6	2.2	1.3	0.4										
		A_E	1.2	7.2	2.4	20.7	9.8	3.7	9.7	0.1	1.0	0.4	12.6	4.5	0.4	3.0	1.7	8.0	10.6	2.2	1.3	0.4										
		A_F	0.9	5.7	1.9	2.3	53.1	2.2	7.3	0.1	0.8	0.3	1.2	7.7	0.3	3.4	0.7	0.4	0.1	5.4	6.6	0.7										
		A_G	2.3	5.9	5.5	4.4	13.7	9.1	10.7		2.2	0.1	0.5	1.0	6.3	7.9	0.1	4.9	0.2	10.7	1.8	12.7										
		A_H	1.1	3.2	2.4	4.2	13.1	2.9	35.1		1.1		1.6	1.8	3.4	0.1	0.4	5.5	2.6	10.5	11.0											
		B_C	21.1	9.7	1.1	2.3	7.9	0.4	2.0	3.0	13.6	3.7	5.1	9.9	6.4	8.8		1.5	1.3	1.3	0.8	0.1										
		B_D	14.6	1.2	7.4	0.7	2.4	1.0	1.8	0.9	55.4	1.6	0.1	0.4	0.9	6.5		0.8		1.7	0.3	2.1										
		C_D	3.0	7.6	9.4	0.9	3.8	0.2	0.3	0.6	3.6	11.1	5.4	9.2	11.5	21.2		3.1	1.4	4.0	1.4	2.5										
		C_E																														
		C_F	0.3	6.3	0.5	1.1	8.3	0.2	0.2	0.2	0.2	0.9	5.0	53.9	7.5	0.2	0.9	1.1	1.9	7.4	3.1	1.2										
		C_G	0.4	4.7	1.1	0.2	0.7	2.0	2.0	0.2	0.6	3.2	9.2	13.8	29.5	4.1		6.8	2.2	10.4	2.7	6.9										
		D_G	2.2	0.5	6.2	0.7	3.2	1.7	2.3	0.1	2.4	0.2	0.5	0.2	3.3	66.1		1.1	0.1	2.9	0.4	2.9										
	E_F	0.2	1.0	6.3	7.1	10.3	0.4	1.4		0.1	0.1	17.0	15.9	0.1	6.4	4.8	11.0	10.4	10.4	8.9	0.1											
	E_G	0.5	0.5	1.3	4.5	0.8	1.8	0.7		0.5	0.7	11.9	3.3	7.4	2.5	1.5	32.4	11.6	5.4	0.2	12.4											
	E_H		1.4		6.1	0.1	0.1	7.3		0.3	8.6	4.5	2.4	0.4	1.5	11.7	34.6	0.2	5.9	14.8												
	F_G	0.8	0.1	1.8	0.7	7.8	2.3	2.1		0.8	0.6	2.0	9.7	7.2	3.2	0.9	3.5	0.2	35.6	9.3	11.5											
	F_H	0.1	0.3	0.4	0.6	11.2	0.5	9.9		0.2	0.2	3.0	5.7	2.2	0.8	0.9	0.1	4.3	11.0	34.1	14.5											
	G_H	0.6	0.7	1.3	0.1	0.5	1.6	4.7		0.6	0.2	0.9	1.1	2.5	2.0		4.5	5.3	6.9	7.5	59.3											
Entire network			7.7	3.9	4.1	3.3	8.3	1.5	5.6	0.4	6.3	1.8	6.4	7.3	4.6	10.1	0.7	4.7	4.5	5.6	4.8	8.4										
Included studies			3	13	8	6	13	5	14	2	1	2	1	1	1	1	2	1	1	2	2	2										

Opioid consumption

		Direct comparisons in the network									
		A_B	A_C	A_D	A_E	A_F	A_H	B_C	C_D	E_F	
Network meta-analysis estimates	Mixed estimates	A_B	55.0	19.8	1.8			21.6	1.8		
		A_C	4.8	79.7	5.3			4.8	5.3		
		A_D	1.4	16.9	62.2			1.4	18.2		
		A_E				89.3	5.3				5.3
		A_F				39.3	21.4				39.3
		A_H						100.0			
		B_C							54.6	1.8	
		C_D	21.8	20.0	1.8				1.9	48.4	
		E_F	1.9	23.0	24.9						89.3
		B_D				5.4	5.4				
		B_E	25.5	2.0	27.5				23.5	21.5	
		B_F	27.5	12.8	1.1	38.9	2.4		13.8	1.1	2.4
		B_H	21.9	9.9	1.1	22.2	10.7		11.0	1.1	22.2
		C_E	27.5	13.2	1.3			42.1	14.5	1.3	
	C_F	3.2	39.9	2.7	43.1	2.7		3.2	2.7	2.7	
	C_H	2.4	30.1	2.7	24.5	10.7		2.4	2.7	24.5	
	D_E	3.2	39.9	3.5			46.6	3.2	3.5		
	D_F	0.8	10.7	31.1	40.1	2.5		0.8	11.5	2.5	
	D_H	0.8	8.4	24.3	22.8	10.7		0.8	9.2	22.8	
	E_H	1.0	11.2	31.1			43.4	1.0	12.3		
	F_H				44.7	3.6		48.2		3.6	
	F_H				26.2	10.7		36.9		26.2	
Entire network			9.5	16.1	10.6	18.9	4.1	15.1	7.6	6.8	11.5
Included studies			1	4	5	1	4	3	1	1	1

Pain score with movement

		Direct comparisons in the network																												
		A_B	A_C	A_D	A_E	A_F	A_G	A_H	B_C	B_D	B_E	B_F	B_G	B_H	C_D	C_E	C_F	C_G	C_H	D_E	D_F	D_G	D_H	E_F	E_G	E_H	F_G	F_H	G_H	
Network meta-analysis estimates	Mixed estimates	A_B	46.9	12.7	12.0																									
		A_C	2.3	68.7	9.8	0.2	1.7	0.6	0.6	2.4	0.1	10.1	1.5	1.1	0.4	0.1														
		A_D	2.5	11.1	66.3	0.1	0.4	0.1	2.2	0.1	2.6	11.6	0.3	0.2	2.3															
		A_E																												
		A_F	0.1	1.6	0.3	5.8	76.8	1.6	1.8	0.1	0.2	1.6	0.3	0.2	5.8															
		A_G	0.2	5.1	1.1	3.1	14.8	32.7	8.0	0.2	0.9	0.2	6.0	0.2	2.5															
		A_H	0.1	0.6	2.0	0.9	2.0	1.0	85.4		0.1	0.4	0.2	0.2	2.5															
		B_C	21.2	21.5	1.1	0.1	0.5	0.2		31.6	11.9	10.7	0.5	0.4	0.1	0.1														
		B_D	21.0	0.8	21.1					0.7	12.2	32.0	11.3																	
		C_D	0.1	23.2	23.3	0.1	0.6	0.2	0.6	2.8	2.8	44.0	0.6	0.5	0.9	0.1														
		C_E	1.1	32.8	5.2	2.7	35.3	0.5	0.5	1.1	0.1	5.7	6.3	1.9	0.5	2.8														
		C_F	0.8	24.8	4.0	1.5	8.7	15.8	3.6	0.9	0.1	4.6	1.9	15.5	0.7	0.5	1.0													
		D_H	1.2	6.6	31.1	0.4	0.7	0.4	37.4	0.1	1.3	7.3	0.4	0.5	10.1															
		E_F	0.2	3.0	0.1	27.5	26.1	0.5	4.1		0.1	0.7	0.1	3.8	39.2	1.0	1.0	1.8	0.9	0.2										
	E_G		0.1	0.9	33.3	6.2	0.1	38.4		0.1	0.3	0.2	1.3	9.3	1.0	3.8	0.9	1.9	2.0											
	E_H	0.1	2.2	0.5	0.9	20.6	14.8	4.0		0.1	0.4	1.2	3.9	0.1	3.0	2.0	0.1	39.8	1.0	5.2										
	F_G	0.3	0.7	3.2	36.1	0.3	39.2			0.1	0.7	0.9	0.1	1.5	4.1															
	G_H	0.1	2.7	0.1	1.6	8.4	15.4	28.1		0.1	1.3	0.1	4.0	1.4	0.8	1.6	0.7	11.0	1.8	20.8										
	B_E	23.4	5.9	7.6	30.5	5.8	0.3	0.3	7.0	8.4	0.2	0.7	0.5	0.6	6.9	0.6	0.7	0.3	0.1	0.1										
	B_F	23.3	5.9	7.6	2.8	32.9	0.7	0.4	8.5	8.5	0.3	2.2	0.7	0.6	2.9															
	B_G	20.8	3.5	5.1	1.5	7.1	16.1	4.7	10.4	6.5	0.6	0.6	6.9	0.8	0.5	1.0														
	B_H	23.3	7.8	6.0	0.4	0.7	0.4	35.7	8.8	9.6		0.4	0.6	3.5	8.0	1.0														
	C_E	1.1	33.7	4.7	33.9	5.3	0.1	0.4	1.2	0.1	5.2	2.0	1.5	0.5	8.0	1.0														
	C_H	1.2	33.4	5.1	0.3	0.2	0.2	39.0	1.3	0.1	8.3	1.6	1.7	3.4	0.1															
	D_E	1.2	5.4	32.9	33.7	5.8	0.2	0.2	0.1	1.3	6.5	0.7	0.5	1.9	7.0	0.6														
	D_F	1.2	5.6	32.6	2.8	36.0	0.6	0.1	1.3	8.2	2.1	0.7	2.0	2.9																
	D_G	1.0	2.9	26.3	1.6	9.4	16.1	3.0	0.2	1.2	10.1	0.6	6.8	2.7	0.6	1.0														
Entire network			6.9	11.5	11.0	10.1	12.7	4.8	12.2	3.7	3.6	5.4	1.0	2.1	1.4	4.4	0.7	0.5	4.7	0.8	2.5			</						