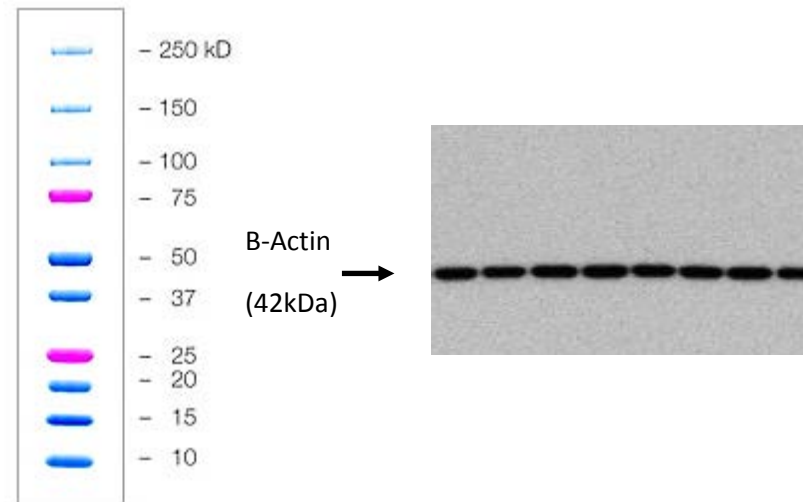
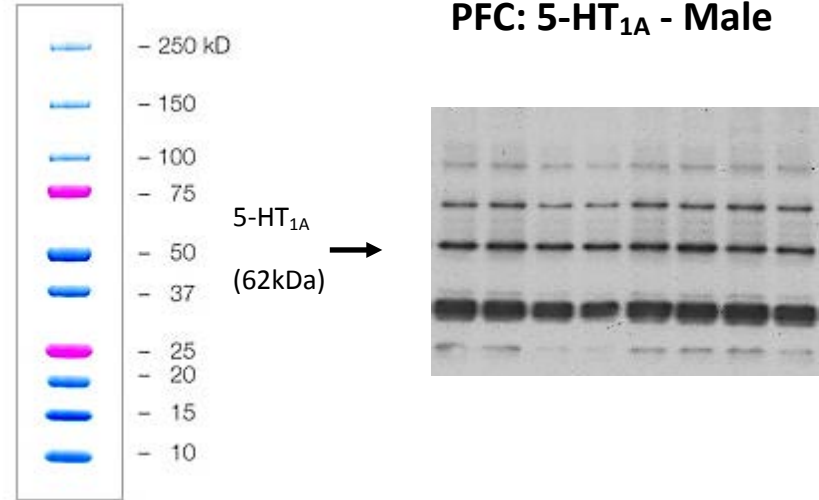
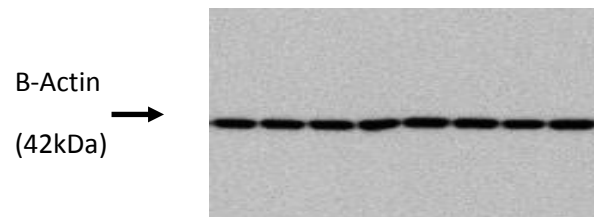
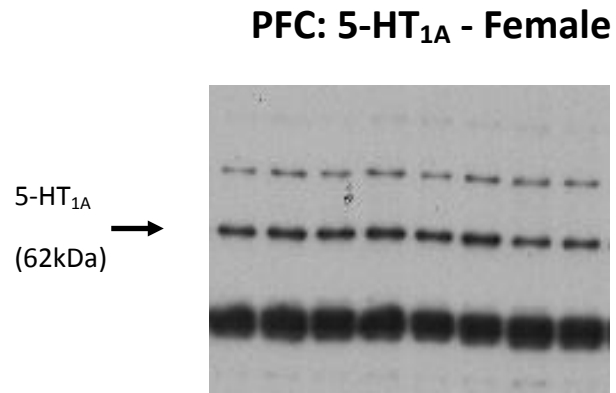
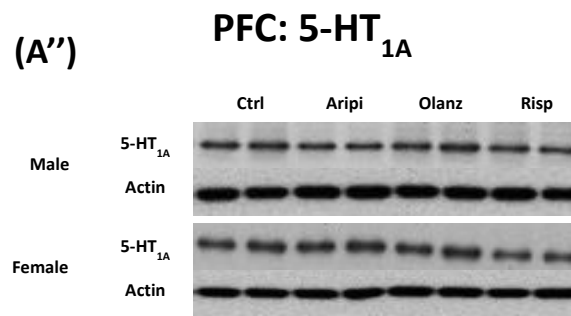
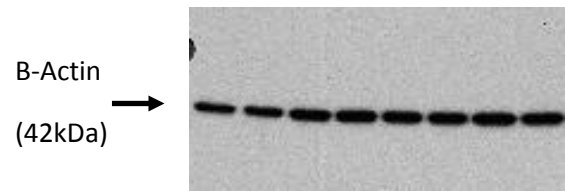
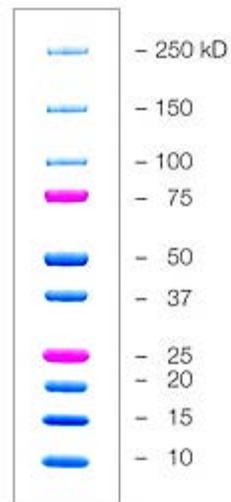
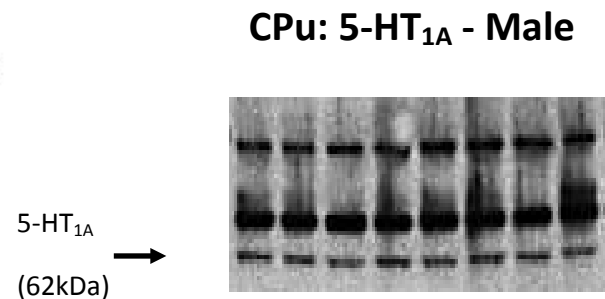
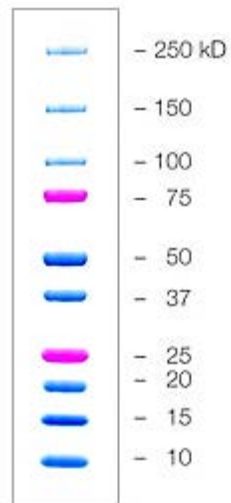
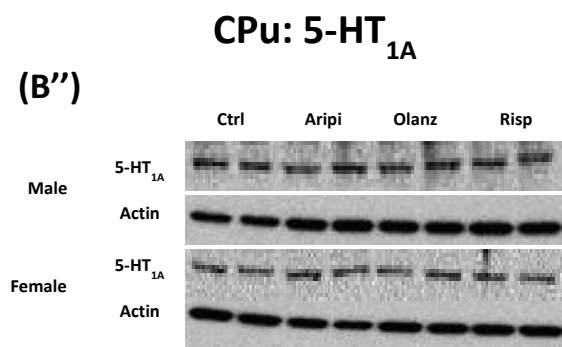
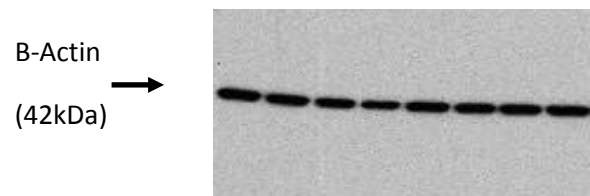
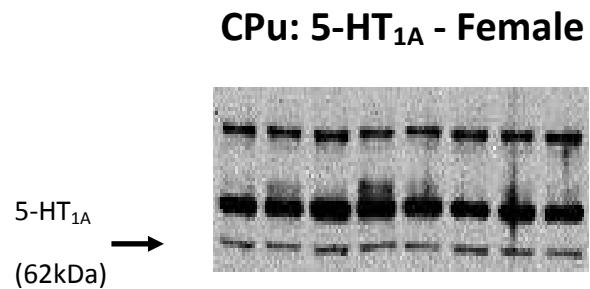


Supplementary materials

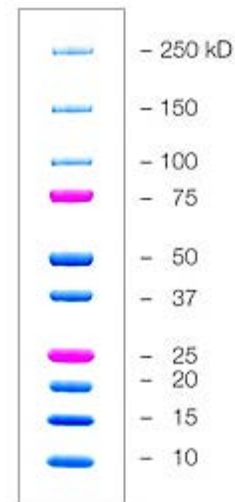
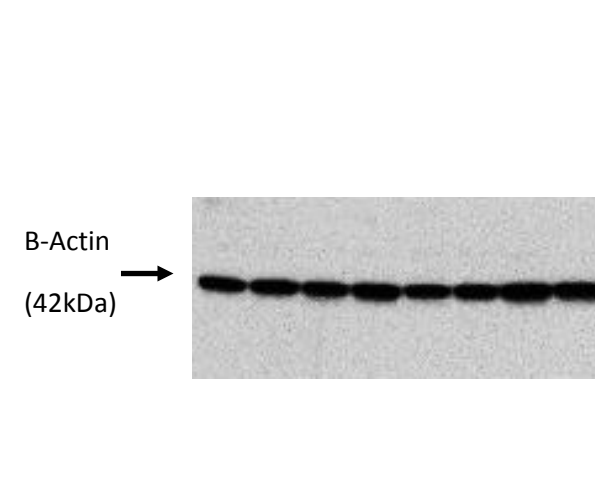
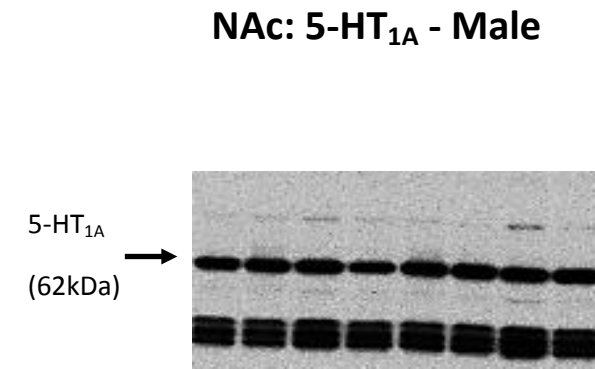
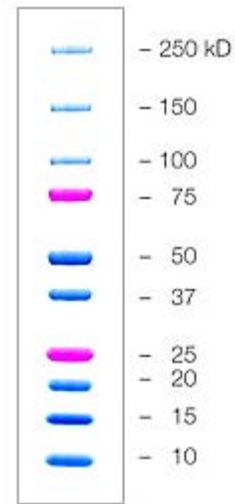
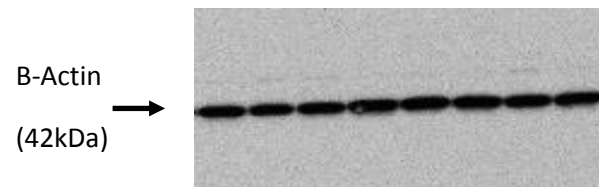
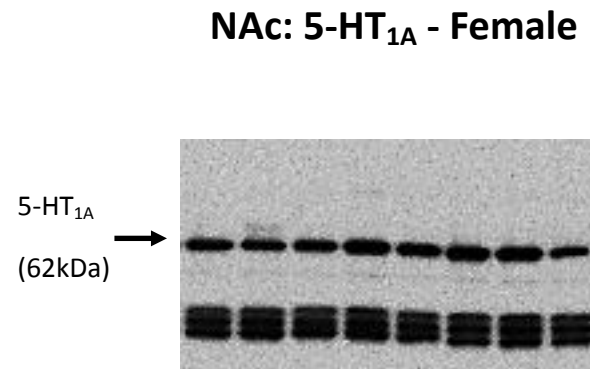
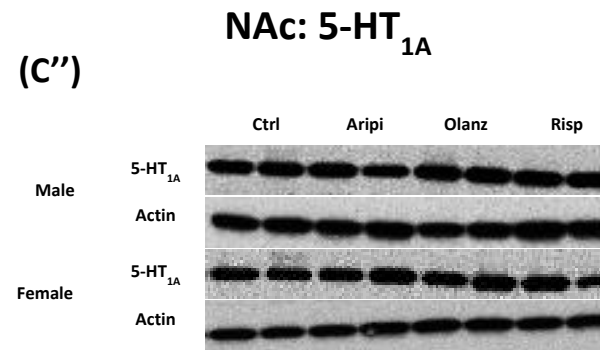
Supplementary Figure 1 - Effects of three APDs on 5-HT_{1A} expression levels in the PFC (A''), CPu (B''), NAc (C'') and Hipp (D'') of female and male rats.



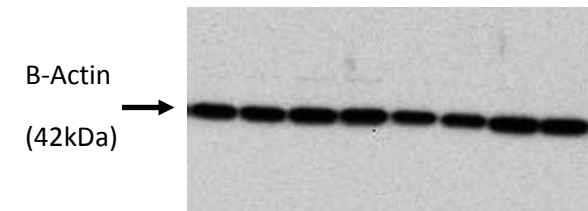
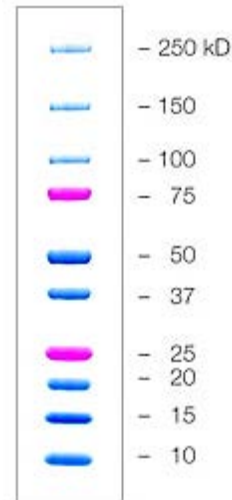
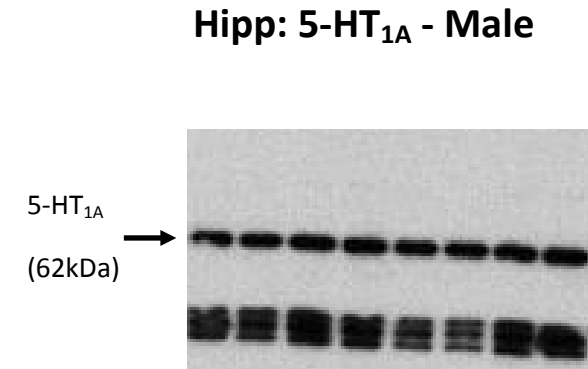
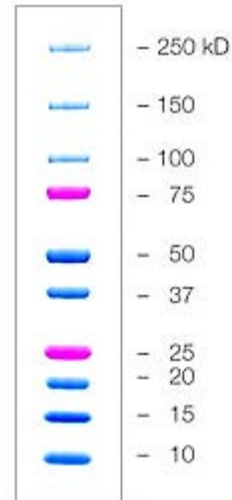
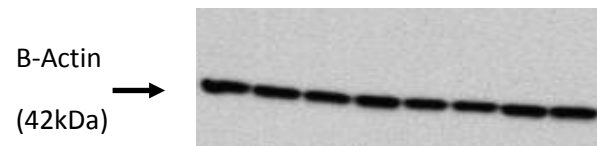
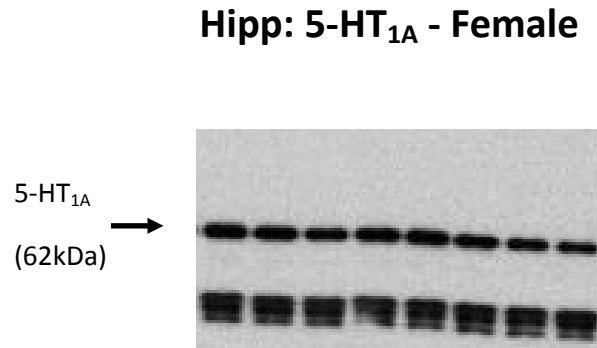
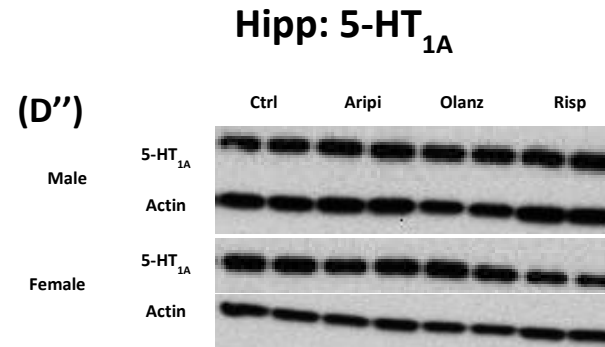
Supplementary Figure 1 - Effects of three APDs on 5-HT_{1A} expression levels in the PFC (A''), CPu (B''), NAc (C'') and Hipp (D'') of female and male rats.



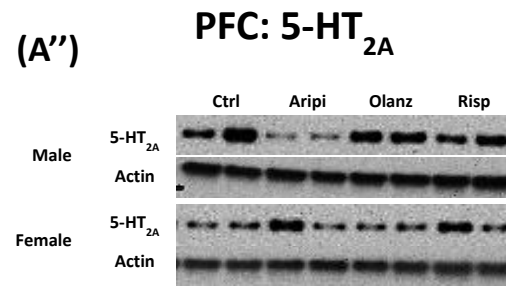
Supplementary Figure 1 - Effects of three APDs on 5-HT_{1A} expression levels in the PFC (A''), CPu (B''), NAc (C'') and Hipp (D'') of female and male rats.



Supplementary Figure 1 - Effects of three APDs on 5-HT_{1A} expression levels in the PFC (A''), CPU (B''), NAc (C'') and Hipp (D'') of female and male rats.

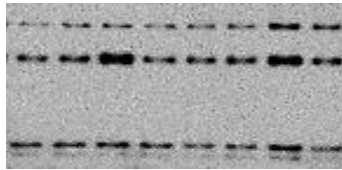


Supplementary Figure 2 - Effects of three APDs on 5-HT_{2A} expression levels in the PFC (A''), CPU (B''), NAc (C'') and Hipp (D'') of female and male rats.

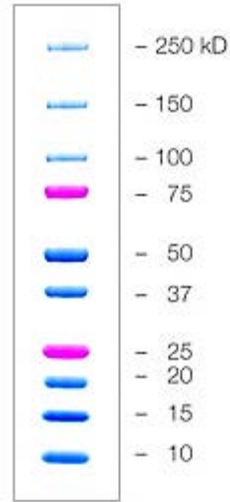
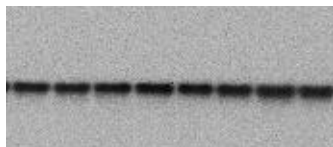


PFC: 5-HT_{2A} - Female

5-HT_{2A}
(55kDa) →

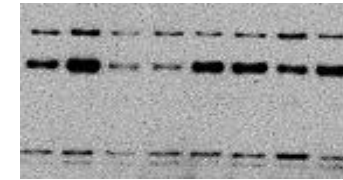


B-Actin
(42kDa) →

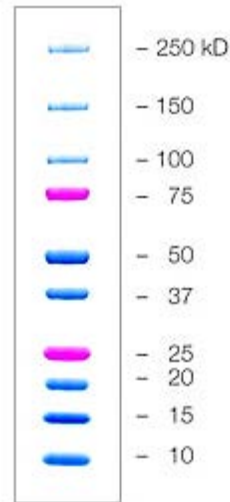
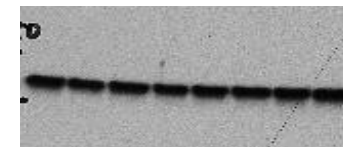


PFC: 5-HT_{2A} - Male

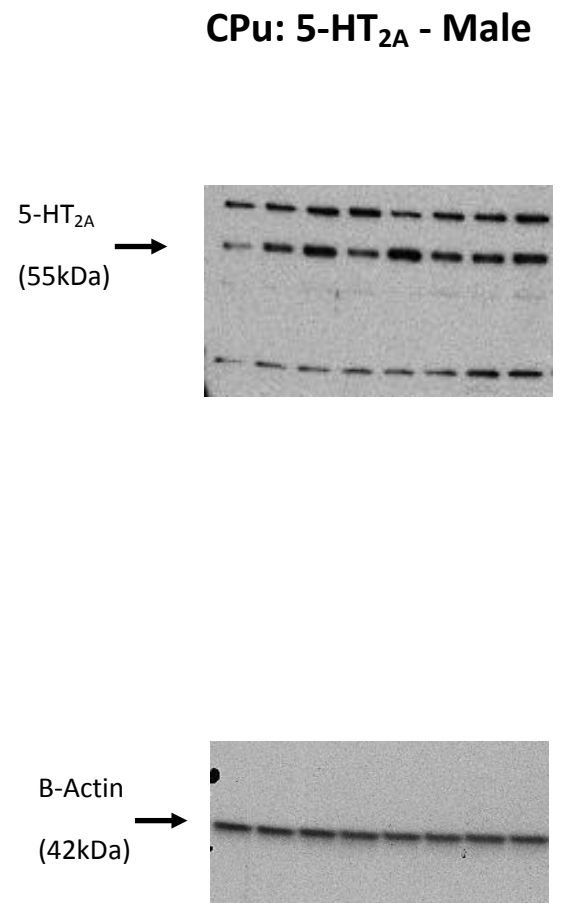
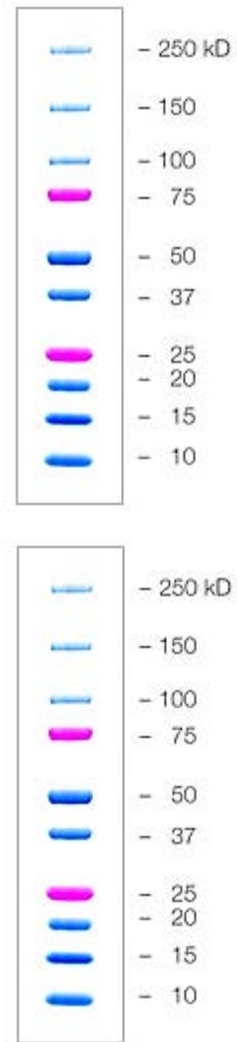
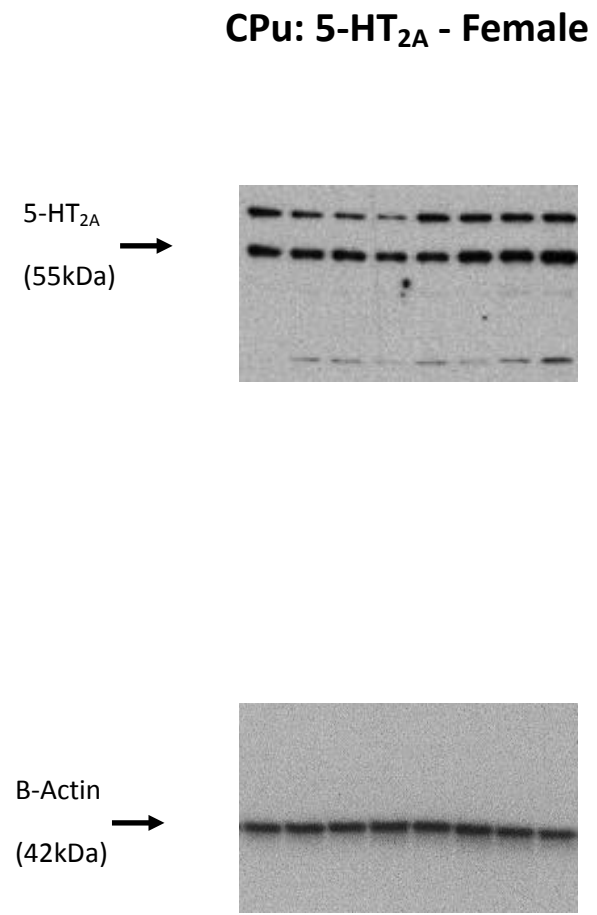
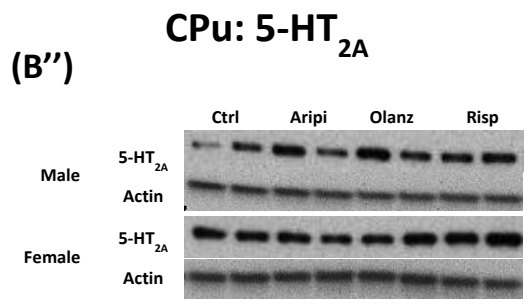
5-HT_{2A}
(55kDa) →



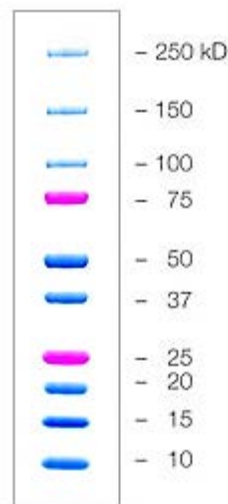
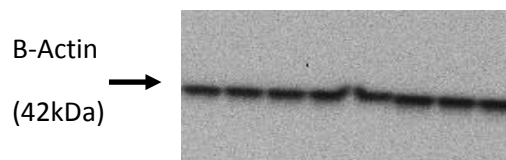
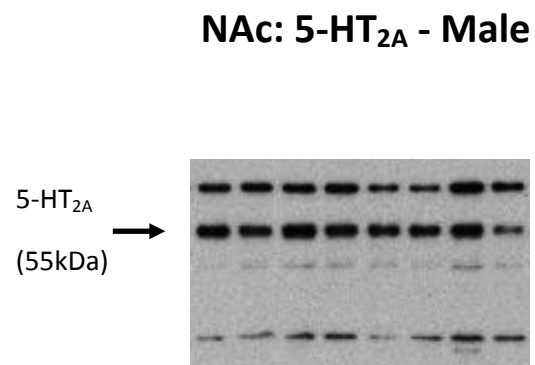
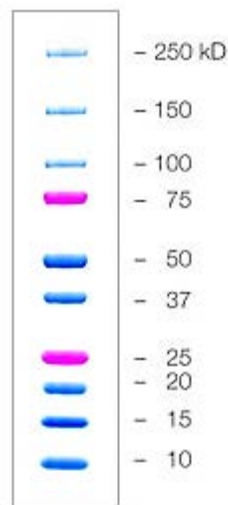
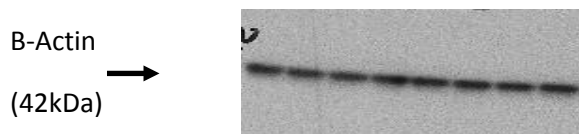
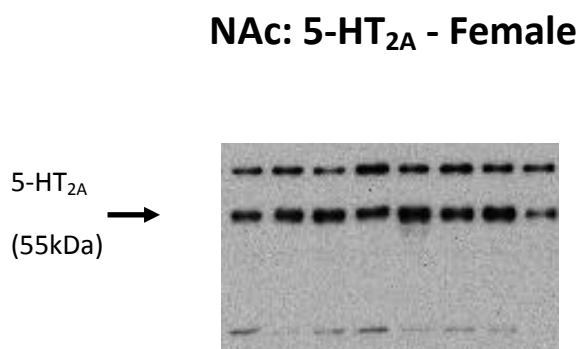
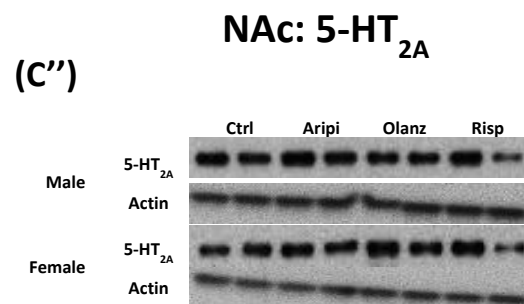
B-Actin
(42kDa) →



Supplementary Figure 2 - Effects of three APDs on 5-HT_{2A} expression levels in the PFC (A''), CPu (B''), NAc (C'') and Hipp (D'') of female and male rats.



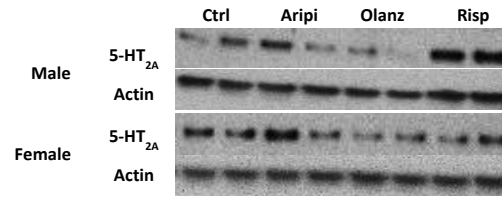
Supplementary Figure 2 - Effects of three APDs on 5-HT_{2A} expression levels in the PFC (A''), CPU (B''), NAc (C'') and Hipp (D'') of female and male rats.



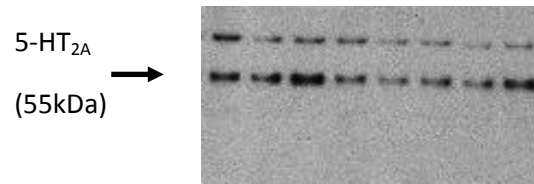
Supplementary Figure 2 - Effects of three APDs on 5-HT_{2A} expression levels in the PFC (A''), CPU (B''), NAc (C'') and Hipp (D'') of female and male rats.

Hipp: 5-HT_{2A}

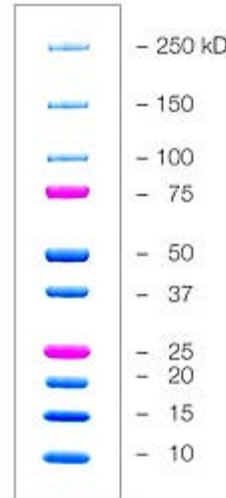
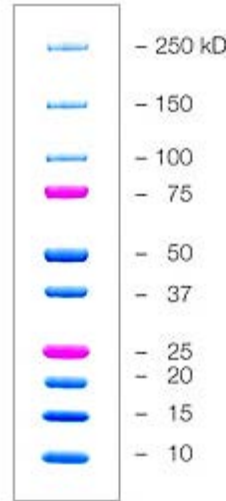
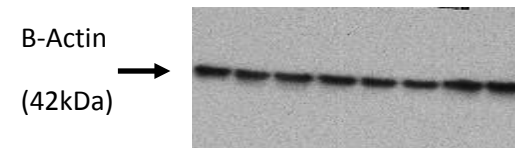
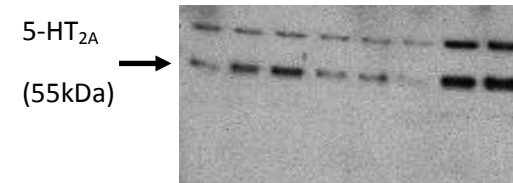
(D'')



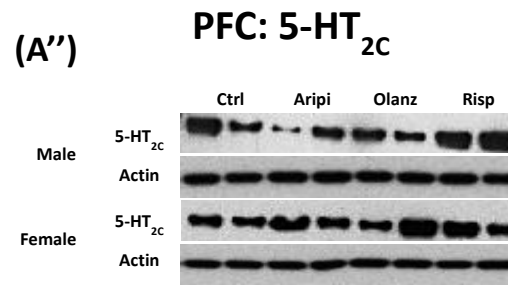
Hipp: 5-HT_{2A} - Female



Hipp: 5-HT_{2A} - Male

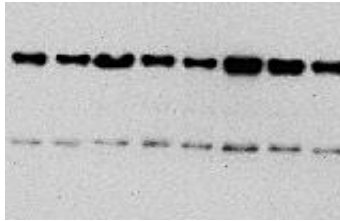


Supplementary Figure 3 - Effects of three APDs on 5-HT_{2C} expression levels in the PFC (A''), CPu (B''), NAc (C'') and Hipp (D'') of female and male rats.

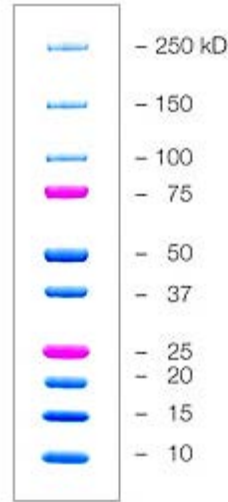
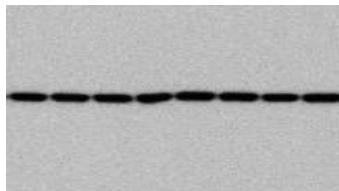


PFC: 5-HT_{2C} - Female

5-HT_{2C}
(55kDa) →

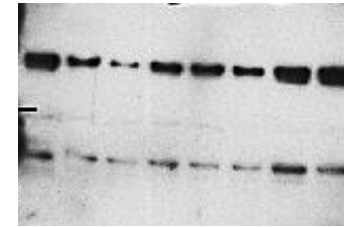


B-Actin
(42kDa) →

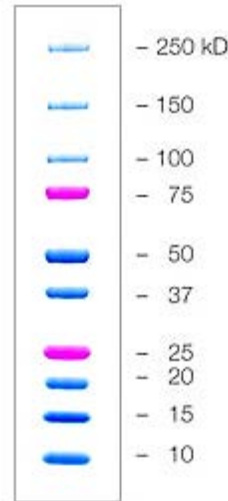
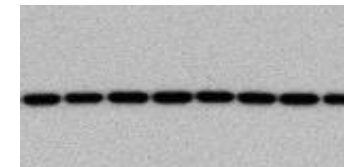


PFC: 5-HT_{2C} - Male

5-HT_{2C}
(55kDa) →



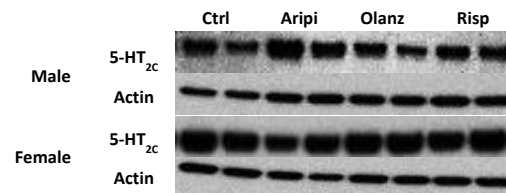
B-Actin
(42kDa) →



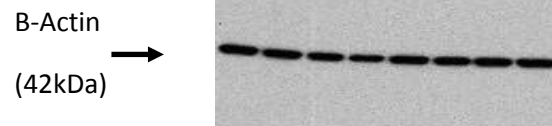
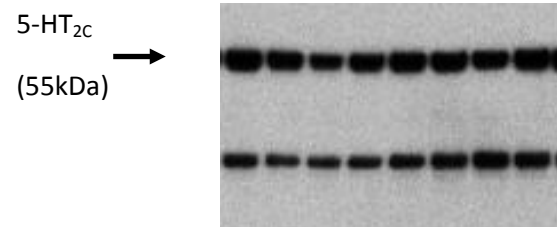
Supplementary Figure 3 - Effects of three APDs on 5-HT_{2C} expression levels in the PFC (A''), CPU (B''), NAc (C'') and Hipp (D'') of female and male rats.

CPu: 5-HT_{2C}

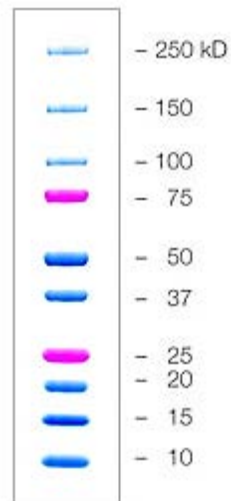
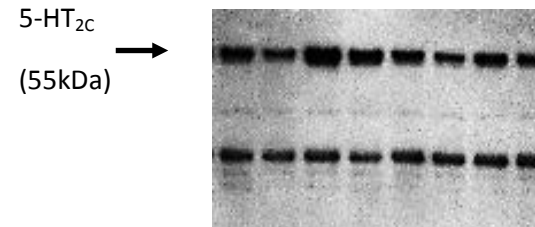
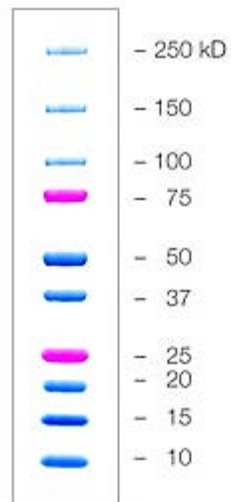
(B'')



CPu: 5-HT_{2C} - Female



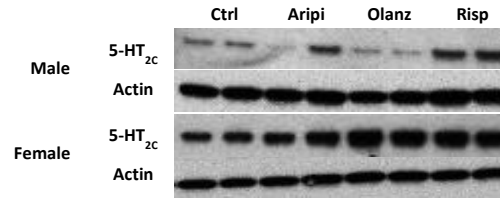
CPu: 5-HT_{2C} - Male



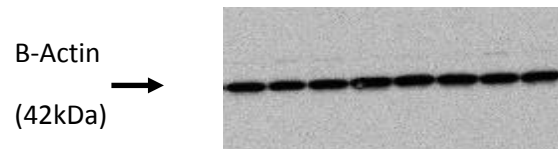
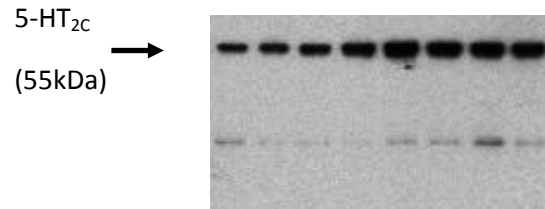
Supplementary Figure 3 - Effects of three APDs on 5-HT_{2c} expression levels in the PFC (A''), CPU (B''), NAc (C'') and Hipp (D'') of female and male rats.

NAc: 5-HT_{2c}

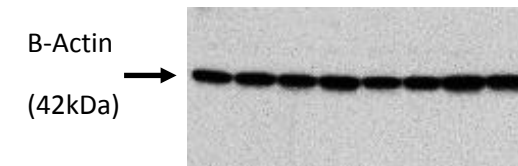
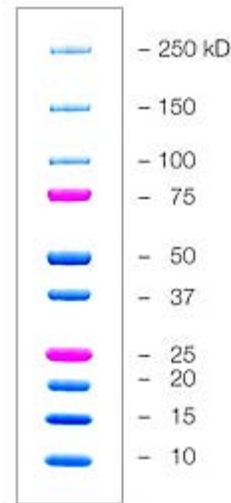
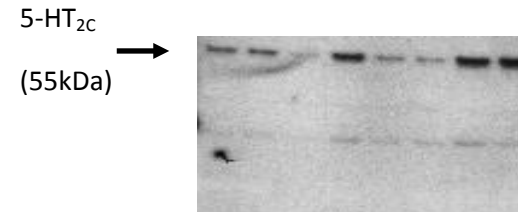
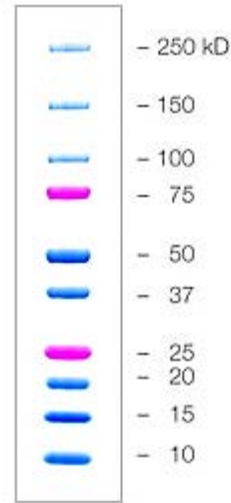
(C'')



NAc: 5-HT_{2c} - Female



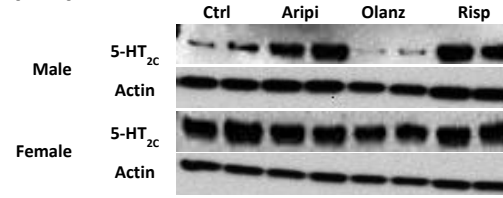
NAc: 5-HT_{2c} - Male



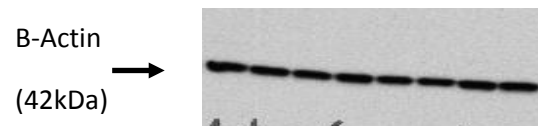
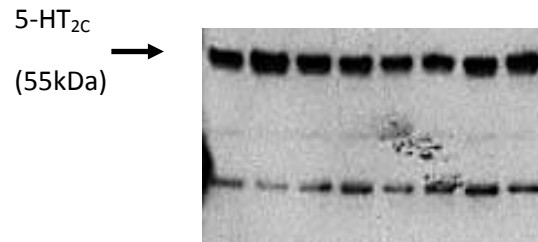
Supplementary Figure 3 - Effects of three APDs on 5-HT_{2C} expression levels in the PFC (A''), CPU (B''), NAc (C'') and Hipp (D'') of female and male rats.

Hipp: 5-HT_{2C}

(D'')



Hipp: 5-HT_{2C} - Female



Hipp: 5-HT_{2C} - Male

