



**PEJABAT KETUA**

01 November 2011

**Professor Dr. Mahmood Ameen Abdulla**  
Jabatan Molekul Perubatan  
Fakulti Perubatan  
Universiti Malaya

Tuan/Puan,

**PERLANJUTAN NOMBOR ETIKA: ANTI-ULCER AT WOUND HEALING ACTIVITIES OF PURE  
COMPOUNDS AND MEDICINAL PLANT EXTRACTS IN RATS**

Dengan sukacitanya Jawatankuasa Institusi Penjagaan dan Penggunaan Haiwan, Universiti Malaya telah meluluskan permohonan untuk perlanjutan nombor etika bagi penyelidikan tersebut di atas.

No rujukan etika: **PM/28/09/2006/1111/MAA (R)**

Sila ambil perhatian bahawa nombor rujukan etika yang diberi adalah sah untuk tempoh **dua (2) tahun iaitu sehingga 1 November 2013**.

Sekian, terima kasih.

Yang benar,

**Dr. Haji Azizuddin Bin Haji Kamaruddin**

Ketua

Pusat Haiwan Makmal

Fakulti Perubatan

Merangkap Setiausaha Jawatankuasa Institusi Penjagaan dan Penggunaan Haiwan, Universiti Malaya



	Ulcer area mm <sup>2</sup>	Protein mg/ml	GWM	NO	SOD U/mg protein	GSH (mol/g tissue)	MDA (mol/g tissue)	PGE2 ng/mg	pH
1	0	18.239	2.046	10.873	27.766	2.121	16.611	3.203	3.197
1	0	21.13	2.025	10.07	27.616	2.183	17.109	3.295	3.244
1	0	17.884	1.979	9.466	26.696	2.057	18.794	3.458	2.813
1	0	19.848	1.667	9.873	26.116	2.112	17.304	3.396	3.082
1	0	19.579	1.898	10.361	28.141	2.18	16.261	3.775	2.918
1	0	18.111	2.333	9.267	25.509	2.152	18.485	3.966	2.824
2	465	13.015	1.301	3.068	14.421	0.844	43.35	1.894	1.824
2	552	11.31	1.373	3.5	13.131	0.798	45.781	2.021	1.268
2	494	11.024	1.355	3.783	11.53	0.782	43.027	2.133	1.834
2	463	10.141	1.15	3.029	14.081	0.876	40.155	2.296	1.748
2	543	11.989	0.673	3.681	11.419	0.899	43.82	2.192	1.418
2	462	11.213	1.152	2.831	13.813	0.821	45.462	2.263	1.914
3	102	17.525	4.671	8.508	27.623	1.817	22.019	3.066	3.895
3	104	13.871	4.741	7.791	32.105	1.668	24.723	3.341	3.385
3	129	15.824	4.763	7.917	27.725	1.762	22.835	3.116	3.538
3	111	16.839	4.546	7.364	32.45	1.847	24.197	3.085	3.531
3	142	16.748	4.217	7.361	31.477	1.787	23.979	3.424	4.027
3	102	15.652	4.76	8.327	31.65	1.871	21.801	3.11	3.39
4	118.72	11.018	2.005	7.968	21.716	1.569	39.814	2.849	4.166
4	139.68	12.224	1.641	7.938	21.403	1.856	30.54	2.821	4.108
4	131.3	13.488	1.804	7.748	17.967	1.389	29.4	2.918	4.206
4	114.24	11.956	2.015	7.716	19.391	1.589	20.87	2.688	4.217
4	135.18	12.697	1.754	7.641	18.536	1.866	25.647	2.798	4.287
4	145.24	11.604	1.734	7.736	19.538	1.587	31.5	2.628	4.222
5	116.55	12.31	3.046	7.791	25.476	1.796	19.8	3.616	4.292
5	164.9	13.774	3.136	7.203	25.412	1.882	39.4	3.384	4.015
5	146.35	12.058	2.866	7.307	22.828	1.838	32.228	3.511	3.984
5	160.52	12.331	3.106	7.897	26.302	1.879	25.154	3.42	3.896
5	167.77	13.24	3.053	7.239	22.541	1.909	31.313	3.314	3.764
5	112.97	11.85	2.895	7.85	23.013	1.877	31.59	3.456	4.294

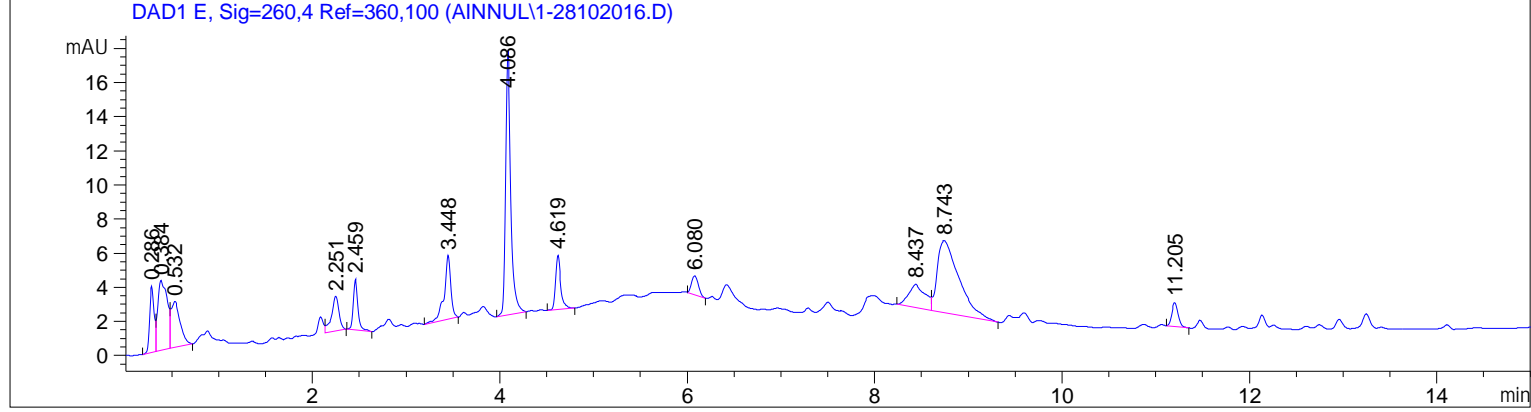
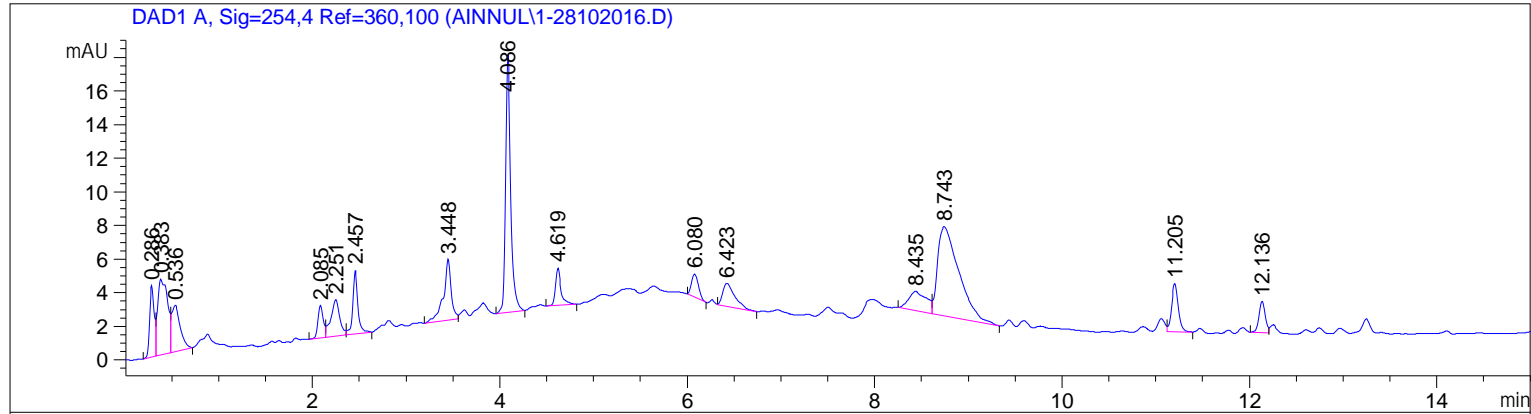
		Inhibition %
Group1	Normal ctrl	0
Group2	Ulcer ctrl	0
Group3	Omeprazole	0.76838
Group4	Leave (150 mg/kg)	0.73671
Group5	Leave 300 mg/kg	0.70827

Sample Name: 1

```

=====
Acq. Operator   : SYSTEM                               Seq. Line :    2
Acq. Instrument : HPLC 1290                           Location  : P1-A-02
Injection Date  : 10/28/2016 10:21:44 AM              Inj       :    1
                                                    Inj Volume: 1.000 µl
Different Inj Volume from Sequence ! Actual Inj Volume : 2.000 µl
Acq. Method    : C:\CHEM32\1\DATA\28102016 2016-10-28 10-18-22\METHOD 2 28102016.M
Last changed   : 10/28/2016 10:21:45 AM by SYSTEM
                (modified after loading)
Analysis Method: C:\CHEM32\1\DATA\AINNUL\METHOD 2 28102016.M (Sequence Method)
Last changed   : 10/28/2016 3:40:22 PM by SYSTEM
                (modified after loading) (Current integration events modified)
=====

```



```

=====
                          Area Percent Report
=====

```

```

Sorted By      :      Signal
Multiplier     :      1.0000
Dilution      :      1.0000
Use Multiplier & Dilution Factor with ISTDs

```

Signal 1: DAD1 A, Sig=254,4 Ref=360,100

Peak #	RetTime [min]	Type	Width [min]	Area [mAU*s]	Height [mAU]	Area %
1	0.286	BV	0.0533	15.04648	4.25286	4.4733
2	0.383	VV	0.0976	33.05134	4.50242	9.8261
3	0.536	VB	0.0920	17.97010	2.75844	5.3425
4	2.085	BV	0.0577	7.56002	1.93134	2.2476
5	2.251	VV	0.0946	14.18777	2.16038	4.2180
6	2.457	VB	0.0589	15.26020	3.79720	4.5368

Sample Name: 1

Peak #	RetTime [min]	Type	Width [min]	Area [mAU*s]	Height [mAU]	Area %
7	3.448	BV	0.0811	20.77631	3.61129	6.1768
8	4.086	BB	0.0607	61.22795	15.29276	18.2029
9	4.619	BB	0.0641	9.41902	2.19524	2.8003
10	6.080	BB	0.0813	7.02812	1.38187	2.0894
11	6.423	VB	0.1312	12.08268	1.36609	3.5922
12	8.435	BV	0.1828	15.32719	1.14011	4.5567
13	8.743	VB	0.2357	84.18985	5.28883	25.0295
14	11.205	VB	0.0773	14.60023	2.87192	4.3406
15	12.136	BV	0.0700	8.63575	1.86597	2.5674

Totals : 336.36302 54.41671

Signal 2: DAD1 E, Sig=260,4 Ref=360,100

Peak #	RetTime [min]	Type	Width [min]	Area [mAU*s]	Height [mAU]	Area %
1	0.286	BV	0.0528	13.61436	3.89121	4.9836
2	0.384	VV	0.0946	29.05509	4.10497	10.6358
3	0.532	VB	0.0954	18.36872	2.69909	6.7240
4	2.251	VB	0.0808	11.39473	2.05275	4.1711
5	2.459	BB	0.0573	11.15774	3.00779	4.0844
6	3.448	BB	0.0708	18.20631	3.73831	6.6645
7	4.086	BB	0.0606	61.78518	15.47748	22.6168
8	4.619	BB	0.0596	12.42797	3.17915	4.5493
9	6.080	BB	0.0800	5.46068	1.09849	1.9989
10	8.437	BV	0.1674	16.83090	1.35071	6.1610
11	8.743	VB	0.2383	68.07238	4.21665	24.9183
12	11.205	BB	0.0740	6.80842	1.41968	2.4923

Totals : 273.18246 46.23627

=====  
\*\*\* End of Report \*\*\*