

# Relationship Between Episodic Nocturnal Hypercapnia and History of Exacerbations in Patients with Advanced Chronic Obstructive Pulmonary Disease

Takamasa Kitajima<sup>1</sup>, Satoshi Marumo<sup>1</sup>, Hisanori Amimoto<sup>2</sup>, Yusuke Shiraishi<sup>3</sup>, Haruka Yamaki<sup>3</sup>, Masahiro Shirata<sup>3</sup>, Daiki Inoue<sup>1</sup>, Motonari Fukui<sup>1</sup>

<sup>1</sup>Respiratory Disease Center, Kitano Hospital, Tazuke Kofukai Medical Research Institute, Osaka, Japan; <sup>2</sup>Department of Respiratory Medicine, Kobe City Medical Center West Hospital, Kobe, Japan; <sup>3</sup>Department of Respiratory Medicine, Kyoto University, Graduate School of Medicine, Kyoto, Japan

Correspondence: Takamasa Kitajima, Respiratory Disease Center, Kitano Hospital, Tazuke Kofukai Medical Research Institute, 2-4-20 Ohgimachi, Kita-ku, Osaka, 530-8480, Japan, Tel +81-6-6312-8831, Fax +81-6-6361-8867, Email m-kitajima@kitano-hp.or.jp

**Purpose:** An episodic increase in transcutaneous carbon dioxide pressure (PtcCO<sub>2</sub>) is often recognized in patients with advanced chronic obstructive pulmonary disease (COPD) by overnight PtcCO<sub>2</sub> monitoring. This phenomenon, called episodic nocturnal hypercapnia (eNH), mainly corresponds to rapid eye movement (REM) sleep-related hypoventilation. However, it is unclear whether eNH is associated with the frequency of COPD exacerbation. We aimed to investigate whether a relationship exists between COPD exacerbation and eNH.

**Patients and Methods:** We enrolled consecutive patients with stable, severe, or very severe COPD with a daytime arterial carbon dioxide pressure (PaCO<sub>2</sub>) <55.0 mmHg who underwent overnight PtcCO<sub>2</sub> monitoring from April 2013 to January 2017. We retrospectively analyzed the prevalence of eNH and sleep-associated hypoventilation (SH) as defined by the American Academy of Sleep Medicine. Moreover, we compared the relationship between the frequency of COPD exacerbations in the previous year and eNH or SH.

**Results:** Twenty-four patients were included in this study. The study patients had a mean daytime PaCO<sub>2</sub> and nocturnal PtcCO<sub>2</sub> of 43.3 ± 6.8 mmHg and 42.9 ± 9.6 mmHg, respectively. Six (25.0%) and 11 (45.9%) of the 24 patients met the SH and eNH criteria, respectively. The odds ratios of SH and eNH for at least one annual exacerbation were 1.0 [95% confidence interval (CI): 0.16–6.00] and 11.1 [95% CI: 1.39–87.7], respectively. The odds ratios of SH and eNH for at least two annual exacerbations were 0.3 [95% CI: 0.04–2.64] and 6.6 [95% CI: 1.06–39.4], respectively.

**Conclusion:** In patients with advanced COPD and a daytime PaCO<sub>2</sub> <55.0 mmHg, eNH may be associated with a history of more frequent exacerbations than SH. Further studies are required to validate these findings.

**Keywords:** episodic nocturnal hypercapnia, sleep-associated hypoventilation, exacerbations, arterial carbon dioxide pressure, rapid eye movement

## Introduction

Chronic obstructive pulmonary disease (COPD) is the third leading cause of death worldwide.<sup>1</sup> Exacerbations are common events that have a significant impact on COPD patients and healthcare services,<sup>2</sup> affecting lung function, health status, and mortality.<sup>3,4</sup> In addition, a history of exacerbations has been reported to be the best predictor of future exacerbations,<sup>5</sup> and repeated severe exacerbations were associated with high future mortality.<sup>4</sup>

Certain studies have shown that daytime hypercapnia is associated with frequent exacerbation and poor prognosis in COPD patients.<sup>6–8</sup> In particular, daytime hypoventilation is considered to be associated with repeated COPD exacerbation and a poor prognosis. In patients with advanced COPD, hypercapnic respiratory failure manifests earlier during sleep

than during the awake state as a consequence of pathophysiological changes in ventilation.<sup>9</sup> Therefore, sleep-related hypoventilation disorders may be related to COPD exacerbations before daytime hypercapnia becomes apparent. However, there are few reports showing the importance of sleep-related ventilation disorders on exacerbations in patients with COPD without remarkable daytime hypercapnia.

The American Academy of Sleep Medicine (AASM) defines hypoventilation during sleep as sleep-associated hypoventilation (SH),<sup>10</sup> which needs to meet the following criteria: (1) an increase in the PaCO<sub>2</sub> or transcutaneous carbon dioxide pressure (PtcCO<sub>2</sub>) to a value >55 mmHg for ≥10 min and (2) ≥10 mmHg increase in PaCO<sub>2</sub> or transcutaneous carbon dioxide pressure (PtcCO<sub>2</sub>) during sleep (compared to the awake supine value) to a value exceeding 50 mmHg for ≥10 min. Unfortunately, no research has shown the relationship between SH and COPD exacerbation.

Aside from SH, we defined episodic nocturnal hypercapnia (eNH) as an episodic increase of ≥5 mmHg from baseline PtcCO<sub>2</sub> for ≥5 min at least once during the night as reported in a previous study.<sup>11</sup> eNH is more focused on rapid eye movement (REM) sleep-related hypoventilation than SH. Nocturnal hypercapnia often worsens during REM sleep<sup>9</sup> because of the decreased activity of the respiratory muscles and diminished hypercapnic and hypoxic ventilatory response.<sup>12–14</sup> REM sleep-related hypoventilation can be observed as episodic nocturnal increases in PtcCO<sub>2</sub> during overnight PtcCO<sub>2</sub> monitoring.<sup>12</sup> We have shown that eNH seems to be related to exacerbation frequency in COPD patients with daytime PaCO<sub>2</sub> <55 mmHg.<sup>11</sup> eNH-targeted non-invasive positive pressure ventilation (NPPV) also reduced COPD exacerbation.

Next, we analyzed whether COPD exacerbations were associated with overall sleep-related hypoventilation or only eNH, ie, REM sleep-related hypoventilation. Thereafter, we added more cases to our analyses and retrospectively analyzed overnight PtcCO<sub>2</sub> monitoring data and the frequency of COPD exacerbations during the previous year. We also evaluated the relationship between the history of exacerbations and eNH or SH in patients with stable, severe, or very severe COPD with daytime PaCO<sub>2</sub> <55 mmHg.

## Materials and Methods

### Patients

We enrolled consecutive patients diagnosed with stable, severe, or very severe COPD who were admitted to Kitano Hospital, Tazuke Kofukai Medical Research Institute, from April 2013 to January 2017 for the evaluation of respiratory failure with overnight PtcCO<sub>2</sub> monitoring. All patients who met the following criteria were retrospectively reviewed: age ≥40 years; baseline daytime PaCO<sub>2</sub> <55.0 mmHg; no abnormalities of the thorax or lung other than COPD; no medical history of obstructive sleep apnea (OSA) body mass index (BMI) <25 kg/m<sup>2</sup>; no malignant comorbidities within the past 5 years; and no severe heart failure (New York Heart Association stage 3–4). Patients were judged to be clinically stable if they had no exacerbation (lasting ≥2 days and requiring any change in pharmacological treatment) during the past 3 weeks.

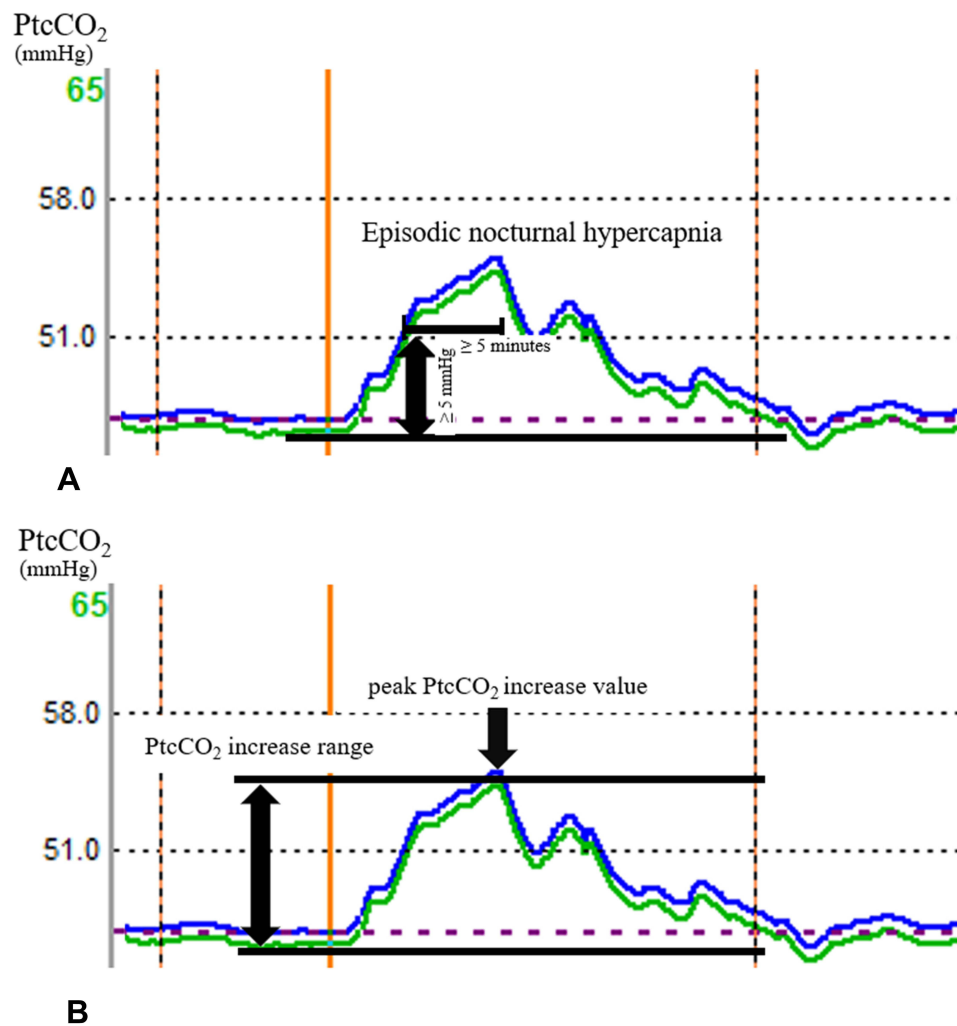
### Measurements and Data Collection

Sociodemographic, clinical, and laboratory data were extracted from medical records. The BMI was calculated as kg/m<sup>2</sup>. Pulmonary function tests were performed by trained operators in accordance with the guidelines of the American Thoracic Society and European Respiratory Society.<sup>15</sup>

Arterial blood gas was measured during the daytime in the supine position using a RAPIDLAB 1200 System (Siemens Healthcare Diagnostic Incorporated, USA). At sampling, all patients were breathing room air, with the exception of those on long-term oxygen therapy who used their prescribed dose of supplementary oxygen. Polysomnography (PSG) was performed using PSG-1100 (Nihon Kohden, Tokyo, Japan), and evaluated by sleep laboratory technicians.

### Peak Nocturnal PtcCO<sub>2</sub> and eNH

PtcCO<sub>2</sub> monitoring was performed using a SenTec Digital Monitor (SenTec, Therwil, Switzerland) or a TOSCA TCM4 (Radiometer, Copenhagen, Denmark), which are reported to show small difference in PtcCO<sub>2</sub>.<sup>16,17</sup> Data on PtcCO<sub>2</sub> monitoring were evaluated by two board-certified members of the Japanese Respiratory Society with over 10 years of clinical practice. In the present study, eNH was defined as a continuous episodic increase of ≥5 mmHg from baseline PtcCO<sub>2</sub> for ≥5 min, at least once during the night, according to the criteria of a previous study<sup>11</sup> (Figure 1A). The PtcCO<sub>2</sub>



**Figure 1** Episodic nocturnal transcutaneous carbon dioxide pressure increase observed during overnight transcutaneous carbon dioxide pressure monitoring.

**Notes:** (A) Episodic nocturnal hypercapnia, (B) peak PtcCO<sub>2</sub> increase value, and PtcCO<sub>2</sub> increase range.

**Abbreviation:** PtcCO<sub>2</sub>, transcutaneous carbon dioxide pressure.

increase range was measured as the difference between the baseline PtcCO<sub>2</sub> and peak PtcCO<sub>2</sub> for each hypoventilation event (Figure 1B). Furthermore, all patients with eNH were evaluated using PSG to rule out complications of OSA and episodic PtcCO<sub>2</sub> increases corresponding to REM sleep. The nocturnal mean PtcCO<sub>2</sub> and maximum PtcCO<sub>2</sub> were also collected from the overnight PtcCO<sub>2</sub> monitoring data.

## Evaluation of Sleep-Associated Hypoventilation

According to the American Society of Sleep Medicine (ASSM) scoring manual for the scoring of sleep and associated events, SH was defined as an event that met the following criteria during sleep: SH criterion (1), which was an increase in the PaCO<sub>2</sub> (or PtcCO<sub>2</sub>) to a value >55 mmHg for ≥10 min; or SH criterion (2), which was a ≥ 10 mmHg increase in PaCO<sub>2</sub> (or PtcCO<sub>2</sub>) during sleep (compared to the awake supine value) to a value exceeding 50 mmHg for ≥10 min.<sup>10</sup> SH and eNH were judged by two board-certified members of the Japanese Respiratory Society with over 10 years of clinical experience.

## Definition of COPD Exacerbation

COPD exacerbations were defined as acute worsening of respiratory symptoms that resulted in additional therapy.<sup>18</sup> In this study, we retrospectively counted the frequency of moderate and severe exacerbations in the previous year. Moderate

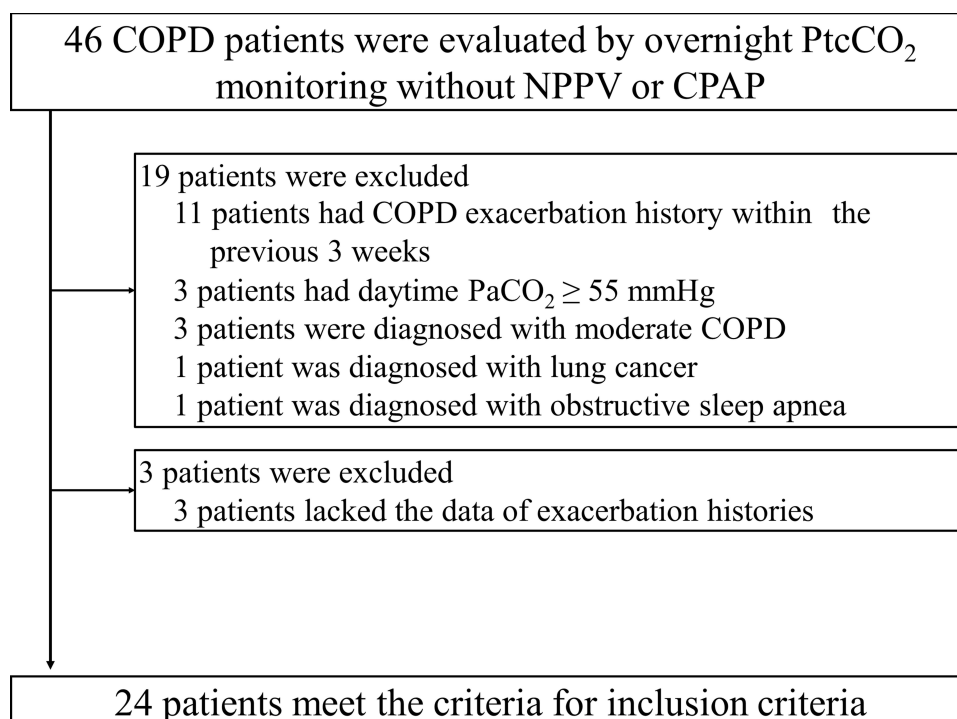
exacerbations were defined as events requiring short-acting bronchodilators plus antibiotics and/or oral corticosteroids.<sup>18</sup> Severe exacerbations were defined as those requiring hospitalizations or visits to the emergency room.<sup>18</sup>

## Ethics and Statistics

The study was carried out in accordance with the ethical guidelines of the Japanese Ministry of Health, Labor, and Welfare and was approved by the Institutional Review Board of the Kitano Hospital Medical Research Institute Ethics Committee (ethics board approval number: P210101300). In addition, we focused on the protection of personal information based on ethical guidelines. Prior comprehensive written informed consent for the use of patients' data for research purposes was obtained from the patients at their first visit to our hospital. Moreover, our hospital's website stated that the study patients were free to opt out of the study. The study conforms to the Declaration of Helsinki. We examined the normality of our data using the Shapiro–Wilk test. Parametric data were presented as mean  $\pm$  standard deviation and nonparametric data as median (interquartile range [IQR]). Data were expressed as odds ratios (ORs) with corresponding 95% confidence intervals (CIs). For all analyses, a  $p$ -value  $<0.05$  was considered statistically significant. Data analyses were conducted using SPSS version 25 (IBM Corp., Armonk, NY, USA).

## Results

Figure 2 shows the patient selection flowchart for this study. Finally, 24 patients with COPD (19 men and five women) met the inclusion criteria. Table 1 shows patient characteristics. Patients had a mean age of 73.5 (64.5–78.8) years and a very severe airflow limitation, with a mean FEV<sub>1</sub> of  $28.8 \pm 10.4\%$ . Supplemental oxygen was used in four patients. Daytime PaO<sub>2</sub>, PaCO<sub>2</sub>, and bicarbonate levels were  $72.0 \pm 9.5$  mmHg,  $43.3 \pm 6.8$  mmHg, and  $29.3 \pm 4.2$  mmol/L, respectively. The modified Medical Research Council (mMRC) and COPD assessment test scores were  $2.9 \pm 0.6$  and  $22.4 \pm 9.6$  points, respectively.



**Figure 2** Flow diagram representing the patient selection process.

**Abbreviations:** COPD, chronic obstructive pulmonary disease; PtcCO<sub>2</sub>, transcutaneous carbon dioxide pressure; NPPV, non-invasive positive-pressure ventilation; CPAP, continuous positive airway pressure; PaCO<sub>2</sub>, arterial carbon dioxide pressure.

**Table 1** Patient Characteristics

Variable	All (n = 24)
Age (years) [IQR]	73.5 (64.5–78.8)
Male sex (%)	79.1
Body mass index (kg/m <sup>2</sup> )	19.5 ± 3.7
Smoking history	
Current smoker (%)	0
Long-term oxygen therapy (%)	16.7
FEV <sub>1</sub> (% of predicted value)	30.2 ± 9.0
FVC (% of predicted value)	77.8 ± 24.8
FEV <sub>1</sub> /FVC ratio	29.2 ± 9.1
Nocturnal maximum PtcCO <sub>2</sub> (mmHg)	48.6 ± 9.5
Nocturnal mean PtcCO <sub>2</sub> (mmHg)	42.9 ± 9.2
PtcCO <sub>2</sub> increases range (mmHg)	5.1 ± 3.3
pH	7.42 ± 0.03
PaCO <sub>2</sub> (mmHg)	42.6 ± 7.1
PaO <sub>2</sub> (mmHg)	75.4 ± 9.2
Bicarbonate (mmol/L)	28.0 ± 4.4
Hematocrit (%)	39.2 ± 5.7
Serum albumin (g/dL)	4.2 ± 0.4
Brain natriuretic peptide (ng/mL) [IQR]	21.5 (13.3–38.0)
mMRC	2.7 ± 0.8
COPD assessment test	23.4 ± 8.7
Treatment after overnight PtcCO <sub>2</sub> monitoring	
Home oxygen therapy only (%)	16.7
Home NPPV therapy only (%)	12.5
Home NPPV therapy plus oxygen therapy (%)	33.3

**Notes:** Parametric data are presented as mean ± standard deviation and nonparametric data as median (IQR). Other data are presented as proportions (%).

**Abbreviations:** PtcCO<sub>2</sub>, transcutaneous carbon dioxide pressure; FEV<sub>1</sub>, forced expiratory volume in 1 s; FVC, forced vital capacity; PaCO<sub>2</sub>, arterial carbon dioxide pressure; PaO<sub>2</sub>, arterial oxygen pressure; mMRC, Modified Medical Research Council dyspnea scale; COPD, chronic obstructive pulmonary disease; NPPV, non-invasive positive pressure ventilation; IQR, interquartile range.

## COPD Exacerbation

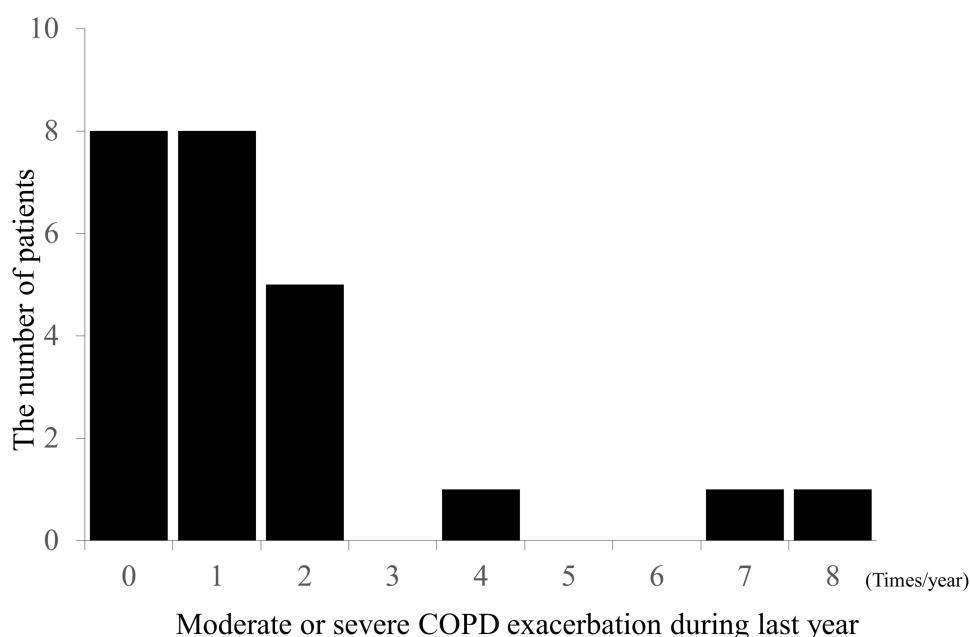
Figure 3 shows the frequency distribution chart of COPD exacerbations in the analyzed population. The median frequency of COPD exacerbations was 1 (0–2.0) times/year. Although eight out of 24 (33.3%) patients were not diagnosed with COPD exacerbation during the previous year, eight (33.3%) patients developed COPD exacerbation ≥2 times during the previous year.

## Overnight PtcCO<sub>2</sub> and PaCO<sub>2</sub> Analysis

Twenty-three patients were evaluated by Sentec and only one was evaluated by TOSCA. The nocturnal maximum PtcCO<sub>2</sub>, mean PtcCO<sub>2</sub>, and PtcCO<sub>2</sub> increase was 48.6 ± 9.5 mmHg, 42.9 ± 9.2 mmHg, and 5.1 ± 3.3 mmHg, respectively (Table 1).

Of the 24 analyzed patients, six (25.0%) patients met the SH criteria, four patients met only SH criterion (1), one patient met only SH criterion (2), and one patient met SH criteria (1) and (2). Daytime PaCO<sub>2</sub>, bicarbonate level, nocturnal maximum PtcCO<sub>2</sub>, mean PtcCO<sub>2</sub>, and PtcCO<sub>2</sub> increases were significantly higher range in patients with SH than in patients without SH (Table 2). On the other hand, there was no significant difference in daytime PaO<sub>2</sub> between patients with SH and patients without SH (Table 2).

Of the 24 analyzed patients, 11 (45.9%) patients met the eNH criteria. Daytime PaCO<sub>2</sub>, bicarbonate levels, and PtcCO<sub>2</sub> increases were significantly higher in patients with eNH than those without eNH (Table 3). There was no



**Figure 3** Frequency distribution chart of exacerbations in the analyzed population.

**Abbreviation:** COPD, chronic obstructive pulmonary disease.

significant difference in daytime  $\text{PaO}_2$ , nocturnal maximum  $\text{PtcCO}_2$ , or mean  $\text{PtcCO}_2$  in patients with and without eNH (Table 3). In the PSG analysis of the patients with eNH, the mean total sleep time and sleep efficiency were  $308 \pm 80.7$  min and  $61.6 \pm 15.5$  min, respectively. REM sleep time accounted for  $17.1 \pm 6.0\%$  of the sleep period. The apnea hypopnea index, central apnea index, and OSA index were  $16.8 \pm 8.0$  episodes/h,  $0.2 \pm 0.3$  episodes/h, and  $1.6 \pm 2.4$  episodes/h, respectively. Most hypopneas were associated with alveolar hypoventilation during REM sleep.

**Table 2** Characteristics of Patients with and without Sleep-Associated Hypoventilation

Variable	Patients Without SH (n = 18)	Patients with SH (n = 6)	p value
Age (years) [IQR]	73.5 (65.5–76.5)	73.0 (60.0–81.5)	0.673
Body mass index ( $\text{kg}/\text{m}^2$ )	$19.8 \pm 2.7$	$19.8 \pm 4.6$	0.996
$\text{FEV}_1$ (% of predicted value)	$29.1 \pm 8.2$	$25.6 \pm 11.6$	0.426
FVC (% of predicted value)	$78.4 \pm 24.0$	$67.1 \pm 12.4$	0.285
$\text{FEV}_1/\text{FVC}$ ratio	$28.1 \pm 6.2$	$30.8 \pm 13.1$	0.649
Nocturnal maximum $\text{PtcCO}_2$ (mmHg)	$45.3 \pm 5.5$	$58.6 \pm 12.5$	0.047
Nocturnal mean $\text{PtcCO}_2$ (mmHg)	$40.2 \pm 5.8$	$50.9 \pm 13.0$	0.010
$\text{PtcCO}_2$ increases range (mmHg)	$4.1 \pm 2.4$	$8.3 \pm 3.8$	0.004
pH	$7.43 \pm 0.03$	$7.39 \pm 0.03$	0.012
$\text{PaCO}_2$ (mmHg)	$41.6 \pm 6.9$	$48.3 \pm 2.7$	0.003
$\text{PaO}_2$ (mmHg)	$74.9 \pm 9.8$	$71.0 \pm 9.3$	0.406
Bicarbonate (mmol/L)	$27.4 \pm 4.2$	$29.7 \pm 0.9$	0.039
Hematocrit (%)	$41.2 \pm 5.2$	$40.9 \pm 8.7$	0.927
Serum albumin (g/dL)	$4.2 \pm 0.4$	$4.2 \pm 0.5$	0.895
Brain natriuretic peptide (ng/mL) [IQR]	21.5 (13.5–35.2)	39.0 (9.8–103.5)	0.602
mMRC	$2.7 \pm 0.7$	$3.0 \pm 0.6$	0.382
COPD assessment test	$23.0 \pm 8.4$	$25.3 \pm 10.0$	0.649

**Note:** Parametric data are presented as mean  $\pm$  standard deviation and nonparametric data as median (IQR).

**Abbreviations:**  $\text{FEV}_1$ , forced expiratory volume in 1 s; FVC, forced vital capacity;  $\text{PtcCO}_2$ , transcutaneous carbon dioxide pressure;  $\text{PaCO}_2$ , arterial carbon dioxide pressure;  $\text{PaO}_2$ , arterial oxygen pressure; mMRC, Modified Medical Research Council dyspnea scale; COPD, chronic obstructive pulmonary disease; IQR, interquartile range.



**Table 3** Characteristics of Patients with and without Episodic Nocturnal Hypercapnia

Variable	Patients Without eNH (n = 13)	Patients with eNH (n = 11)	p value
Age (years) [IQR]	73.0 (64.0–76.0)	78 (60.5–81.0)	0.569
Body mass index (kg/m <sup>2</sup> )	20.8 ± 2.2	18.7 ± 4.0	0.151
FEV <sub>1</sub> (% of predicted value)	28.0 ± 8.4	28.5 ± 10.2	0.904
FVC (% of predicted value)	75.2 ± 28.2	75.9 ± 12.6	0.943
FEV <sub>1</sub> /FVC ratio	27.6 ± 5.6	30.1 ± 10.6	0.485
Nocturnal maximum PtcCO <sub>2</sub> (mmHg)	46.8 ± 8.3	50.7 ± 10.7	0.320
Nocturnal mean PtcCO <sub>2</sub> (mmHg)	41.6 ± 7.5	44.4 ± 11.0	0.487
PtcCO <sub>2</sub> increases range (mmHg)	2.9 ± 1.5	7.8 ± 2.9	< 0.001
pH	7.44 ± 0.03	7.40 ± 0.04	0.016
PaCO <sub>2</sub> (mmHg)	40.0 ± 6.8	47.1 ± 4.6	0.008
PaO <sub>2</sub> (mmHg)	73.3 ± 9.8	74.6 ± 10.0	0.740
Bicarbonate (mmol/L)	26.4 ± 3.3	29.8 ± 3.5	0.024
Hematocrit (%)	41.8 ± 6.6	40.4 ± 5.7	0.600
Serum albumin (g/dL)	4.3 ± 0.4	4.0 ± 0.3	0.118
Brain natriuretic peptide (ng/mL) [IQR]	19.2 (9.2–34.6)	31.9 (14.7–140.8)	0.175
mMRC	2.7 ± 0.6	2.9 ± 0.7	0.434
COPD assessment test	24.3 ± 5.9	22.6 ± 10.7	0.667

**Note:** Parametric data are presented as mean ± standard deviation and nonparametric data as median (IQR).

**Abbreviations:** FEV<sub>1</sub>, forced expiratory volume in 1 s; FVC, forced vital capacity; PtcCO<sub>2</sub>, transcutaneous carbon dioxide pressure; PaCO<sub>2</sub>, arterial carbon dioxide pressure; PaO<sub>2</sub>, arterial oxygen pressure; mMRC, Modified Medical Research Council dyspnea scale; COPD, chronic obstructive pulmonary disease; IQR, interquartile range.

## SH and COPD Exacerbation Relationship

The median frequency of COPD exacerbation was 1.0 (1.0–1.3) times/year in patients with SH. [Table 4](#) represents the sensitivity, specificity, and OR of SH for a history of exacerbation. The OR of SH did not reach statistical significance.

The median frequency of COPD exacerbation was 1.0 (0–1.5) times/year in patients with SH criterion (1) and 1.0 (1.0–1.0) times/year in patients with SH criterion (2). [Table 5](#) represents the sensitivity, specificity, and OR of SH criterion (1) or criterion (2) for a history of exacerbation. The OR of SH criterion (1) or criterion (2) did not reach statistical significance.

## eNH and COPD Exacerbation History

The median frequency of COPD exacerbation was 2.0 (1.0–4.0) times/year in patients with eNH. [Table 4](#) represents the sensitivity, specificity, and OR of eNH for a history of exacerbation. The OR of eNH reached statistical significance, with an OR of 11.1 [95% CI: 1.39–87.7] for at least one annual exacerbation and an OR of 6.6 [95% CI: 1.06–39.4] for two or more exacerbations per year.

**Table 4** Sensitivity, Specificity, and Odds Ratio Values of Sleep-Associated Hypoventilation and Episodic Nocturnal Hypercapnia for the Prediction of Chronic Obstructive Pulmonary Disease Exacerbations

	Sensitivity [95% Confidence Interval]	Specificity [95% Confidence Interval]	Odds Ratio [95% Confidence Interval]
<b>Sleep-associated hypoventilation</b>			
Exacerbation events ≥ 1 times/year	25.0 [13.1–33.6]	75.0 [51.1–92.2]	1.0 [0.16–6.00]
Exacerbation events ≥ 2 times/year	12.5 [0.23–33.7]	68.8 [63.7–81.4]	0.3 [0.04–2.64]
<b>Episodic nocturnal hypercapnia</b>			
Exacerbation events ≥ 1 times/year	62.5 [48.5–67.6]	87.5 [59.6–97.7]	11.1 [1.39–87.7]
Exacerbation events ≥ 2 times/year	75.0 [46.8–92.1]	68.8 [54.6–77.3]	6.6 [1.06–39.4]

**Table 5** Sensitivity, Specificity, and Odds Ratio Values of Sleep-Associated Hypoventilation Criterion (1) and (2) for the Prediction of Chronic Obstructive Pulmonary Disease Exacerbations

	<b>Sensitivity</b> [95% Confidence Interval]	<b>Specificity</b> [95% Confidence Interval]	<b>Odds Ratio</b> [95% Confidence Interval]
<b>SH Criterion 1</b>			
Exacerbation events $\geq 1$ times/year	18.8 [8.20–27.3]	75.0 [53.8–92.1]	1.0 [0.10–4.41]
Exacerbation events $\geq 2$ times/year	12.5 [2.30–36.0]	75.0 [69.9–86.8]	0.4 [0.06–3.69]
<b>SH Criterion 2</b>			
Exacerbation events $\geq 1$ times/year	12.5 [4.30–15.3]	94.1 [78.7–99.4]	2.3 [0.17–28.5]
Exacerbation events $\geq 2$ times/year	5.90 [0.01–21.3]	87.5 [84.7–96.7]	0.4 [0.04–3.97]

**Abbreviation:** SH, sleep hypoventilation.

## Discussion

We have shown that eNH measured by overnight PtcCO<sub>2</sub> is associated with a history of COPD exacerbations in the last year in patients with advanced COPD with baseline daytime PaCO<sub>2</sub> <55.0 mmHg. Furthermore, eNH was more sensitive than SH in relation to the history of COPD exacerbation, while the specificity of eNH was similar to that of SH. There were no significant differences in daytime physiological parameters, excluding pH, daytime PaCO<sub>2</sub>, and bicarbonate levels, with or without eNH or SH (Tables 2 and 3).

The results of this study suggest that eNH, but not SH, is related to COPD exacerbation. The most important difference between SH and eNH is that eNH is exclusively focused on nocturnal episodic PtcCO<sub>2</sub> increases, which corresponds to REM-related hypoventilation, as confirmed by PSG.<sup>11</sup> This indicates that COPD exacerbations are closely associated with REM-related hypoventilation detected as eNH.

On the other hand, SH does not always correspond to episodic PtcCO<sub>2</sub> increases, but also sustained hypercapnia during the night. The SH criterion (1) was defined as an increase in the arterial PaCO<sub>2</sub> (or PtcCO<sub>2</sub>) to a value >55 mmHg for  $\geq 10$  min during sleep. Therefore, the SH criterion (1) theoretically includes not only REM-related hypoventilation but also hypoventilation during non-REM sleep. Therefore, for detection of REM-related hypoventilation, the sensitivity of eNH is better than that of SH.

In addition, the absolute value of PaCO<sub>2</sub> is included in the SH criterion (1), although it is not easy to continuously measure PaCO<sub>2</sub> in clinical practice.<sup>19</sup> We used PtcCO<sub>2</sub> as a surrogate marker for PaCO<sub>2</sub> to evaluate sleep-related disorders in patients with chronic respiratory failure.<sup>19,20</sup> However, the average difference between PaCO<sub>2</sub> and PtcCO<sub>2</sub> is reported to be 4.6–6.1 mmHg,<sup>19,20</sup> and changes in PtcCO<sub>2</sub> are reportedly more reliable than the absolute values of PtcCO<sub>2</sub>.<sup>19,20</sup> In the present study, in patients with SH, five out of six patients (83.3%) met the SH criterion (1), which depends on the uncertain absolute values of PtcCO<sub>2</sub>. Therefore, eNH could be a more reliable marker than SH because it focuses only on the change in PtcCO<sub>2</sub> and not the absolute values of PtcCO<sub>2</sub>.

The SH criterion (2) was defined as a  $\geq 10$  mmHg increase in PtcCO<sub>2</sub> during sleep (in comparison to an awake supine value) to a value exceeding 50 mmHg for  $\geq 10$  min. Therefore, SH criterion (2) focuses on the change in PtcCO<sub>2</sub> and may be useful for specifically detecting REM-related hypoventilation, similar to eNH. In patients with a history of at least one exacerbation, the specificities of the SH criterion (2) and eNH were 94.1% and 87.5%, respectively. However, the sensitivity of the SH criterion (2) (12.5%) was lower than that of eNH (62.5%). In the SH criterion (2), the PtcCO<sub>2</sub> increase of  $\geq 10$  mmHg during sleep seemed to be too high as a cut-off value for detecting REM-related hypoventilation. Eleven patients met the eNH criteria, but only two patients met the SH criterion (2) in the present study. In patients with COPD (average ratio of FEV<sub>1</sub> to forced vital capacity was 42%), PaCO<sub>2</sub> during the awake state, stage 2, stage 3–4, and REM sleep were reported  $49.7 \pm 1.59$  mmHg,  $53.4 \pm 1.52$  mmHg,  $54.5 \pm 1.94$  mmHg, and  $57.4 \pm 1.71$  mmHg, respectively.<sup>21</sup> Namely, it is uncommon for PtcCO<sub>2</sub> to increase to  $\geq 10$  mmHg during REM sleep.<sup>21</sup> In contrast, the sensitivity was improved by the eNH criteria (PtcCO<sub>2</sub> increase  $\geq 5$  mmHg) in the present study. Changing the criteria for



PtcCO<sub>2</sub> increase from  $\geq 10$  mmHg to  $\geq 5$  mmHg seemed to improve the sensitivity associated with a history of COPD exacerbation.

The reason why REM sleep-related hypoventilation is associated with exacerbation of COPD can be explained as follows. During REM sleep, respiratory activity relies almost exclusively on the diaphragm, whereas the activity of the intercostal and accessory muscles ceases.<sup>22</sup> In patients with advanced COPD, the diaphragm flattens as pulmonary hyperinflation,<sup>23</sup> causing inefficient contraction of the diaphragm, resulting in marked alveolar hypoventilation and episodic nocturnal hypercapnia during REM sleep. Surges in PaCO<sub>2</sub> accompanied by episodic hypoventilation may have an important impact on pulmonary artery pressure, since even short-duration hypercapnia may cause pulmonary vasoconstriction,<sup>24</sup> and respiratory acidosis also causes pulmonary artery hypertension, regardless of hypoxic pulmonary vasoconstriction.<sup>24</sup> Repetition of episodic nocturnal hypoventilation and hypercapnia may result in permanent pulmonary hypertension (PH). In our previous study, COPD patients with eNH had significantly higher estimated pulmonary artery systolic pressure ( $47.0 \pm 4.8$  mmHg vs  $33.6 \pm 2.6$  mmHg,  $p = 0.037$ ) and pulmonary artery: aorta ratio ( $0.96 \pm 0.05$  vs  $0.79 \pm 0.03$ ,  $p = 0.019$ ) than those without eNH.<sup>11</sup> REM-related hypoventilation with eNH may lead to PH. Namely, the patient group with eNH may be a subgroup with a high likelihood of pulmonary hypertension, including the patients with baseline daytime PaCO<sub>2</sub>  $< 55.0$  mmHg. Pulmonary artery hypertension is known to be associated with COPD exacerbation and mortality.<sup>25</sup> This hypothesis should be further verified by prospective large-scale studies with overnight PtcCO<sub>2</sub> monitoring.

Fletcher et al proposed episodic nocturnal desaturation criteria (the patient's SaO<sub>2</sub> falls below a baseline of 90% for  $\geq 5$  min) to focus on episodic hypoventilation mainly during REM sleep and showed that patients with COPD based on Fletcher's desaturation criteria had poor survival prognosis.<sup>26,27</sup> However, we believe that evaluation by overnight PtcCO<sub>2</sub> monitoring is more important than that by SpO<sub>2</sub> monitoring. This is because hypoventilation may be overlooked as SpO<sub>2</sub> is affected by oxygen therapy. In addition, episodic nocturnal desaturation may be misidentified as desaturation due to REM-related hypoventilation owing to its similarity to desaturation due to exertion, such as night urination, which is not always reported by the patient.

There is not enough evidence for the usefulness of long-term NPPV in COPD patients without marked elevation in daytime PaCO<sub>2</sub>. However, we previously demonstrated that eNH-targeted NPPV resulted in a significant decrease in daytime PaCO<sub>2</sub> and COPD exacerbation frequency in COPD patients with daytime PaCO<sub>2</sub>  $< 55$  mmHg.<sup>11</sup> In the near future, nocturnal PtcCO<sub>2</sub> monitoring could be a useful measure to detect frequent exacerbations among advanced COPD patients without marked daytime alveolar hypoventilation. Furthermore, we could select a more appropriate patient with daytime PaCO<sub>2</sub>  $< 55$  mmHg for long-term NPPV therapy, resulting in a decreased frequency of COPD exacerbation.

The present study had some limitations. First, this study enrolled a relatively small number of patients with stable advanced COPD and daytime PaCO<sub>2</sub>  $< 55$  mmHg in a single general hospital. However, to the best of our knowledge, this is the first report to compare the significance of eNH with SH in terms of the history of COPD exacerbations. Our findings may lead to new approaches for the detection of subgroups with frequent COPD exacerbations. Second, although we showed that eNH was associated with a history of COPD exacerbations, it remains unclear whether the presence of eNH can predict future exacerbations. A prospective study is needed to validate the relationship between eNH and COPD exacerbation. However, it is not easy to adjust the influence of treatment such as NPPV. Patients with COPD with eNH met the indication criteria of NPPV for stable COPD in Japanese Respiratory Society's NPPV guidelines.<sup>28</sup> Therefore, we treated the patients with eNH with NPPV in clinical practice, and eNH targeted NPPV reduced the frequency of exacerbations.<sup>11</sup> Third, we could not correctly evaluate the history of mild COPD exacerbation. This is because we retrospectively counted the frequency of exacerbations from the medical records. Although we demonstrated the importance of eNH in moderate or severe COPD exacerbations, additional prospective studies are required to confirm our findings. Fourth, six of 24 patients could not be evaluated using polysomnography. We might not have completely excluded patients with OSA from the present study. However, we excluded patients with a history of OSA or BMI  $\geq 25$  kg/m<sup>2</sup>, and the mean BMI was  $19.5 \pm 3.7$  kg/m<sup>2</sup> in the present study. Moreover, the nocturnal continuous monitoring of SpO<sub>2</sub> showed that the 3% and 4% oxygen desaturation indexes were  $7.3 \pm 3.8$  episodes/h and  $4.4 \pm 3.3$  episodes/h, respectively, in patients without polysomnography evaluation. All patients with eNH were evaluated

using PSG, as described above. Our study showed that patients with COPD with low BMI are common in Japan.<sup>29</sup> On the other hand, we should pay attention to apply the results of our study to patients of COPD in the west with high BMI.

## Conclusion

In conclusion, we focused on the association between a history of COPD exacerbations and eNH in patients with advanced COPD and daytime PaCO<sub>2</sub> <55 mmHg. eNH may be a better biomarker than SH defined by ASSM for detecting subgroups with frequent COPD exacerbations. Our research was a small observational study, and further studies are required to evaluate our findings.

## Abbreviations

AASM, American Academy of Sleep Medicine; PaCO<sub>2</sub>, arterial carbon dioxide pressure; BMI, body mass index; COPD, chronic obstructive pulmonary disease; eNH, episodic nocturnal hypercapnia; mMRC, modified Medical Research Council; NPPV, non-invasive positive pressure ventilation; OSA, obstructive sleep apnea; PSG, polysomnography; PH, pulmonary hypertension; REM, rapid eye movement; SH, sleep-associated hypoventilation; PtcCO<sub>2</sub>, transcutaneous carbon dioxide pressure.

## Acknowledgments

We thank Editage for English language editing.

## Author Contributions

All authors made substantial contributions to conception and design, acquisition of data, or analysis and interpretation of data; took part in drafting the article or revising it critically for important intellectual content; agreed to submit to the current journal; gave final approval for the version to be published; and agreed to be accountable for all aspects of the work.

## Disclosure

Dr Hisanori Amimoto reports personal fees from AstraZeneca, personal fees from CHUGAI PHARMACEUTICAL CO., LTD., personal fees from TAIHO PHARMACEUTICAL CO., LTD., during the conduct of the study. The authors report no other conflicts of interest in this work.

## References

1. Lozano R, Naghavi M, Foreman K, et al. Global and regional mortality from 235 causes of death for 20 age groups in 1990 and 2010: a systematic analysis for the Global Burden of Disease Study 2010. *Lancet*. 2012;380(9859):2095–2128. doi:10.1016/S0140-6736(12)61728-0
2. Vogelmeier CF, Criner GJ, Martinez FJ, et al. Global strategy for the diagnosis, management, and prevention of chronic obstructive lung disease 2017 report: GOLD executive summary. *Eur Respir J*. 2017;49(3):1700214. doi:10.1183/13993003.00214-2017
3. Seemungal TA, Donaldson GC, Paul EA, Bestall JC, Jeffries DJ, Wedzicha JA. Effect of exacerbation on quality of life in patients with chronic obstructive pulmonary disease. *Am J Respir Crit Care Med*. 1998;157(5 Pt 1):1418–1422. doi:10.1164/ajrccm.157.5.9709032
4. Soler-Cataluña JJ, Martínez-García MA, Román Sánchez P, Salcedo E, Navarro M, Ochando R. Severe acute exacerbations and mortality in patients with chronic obstructive pulmonary disease. *Thorax*. 2005;60(11):925–931. doi:10.1136/thx.2005.040527
5. Hurst JR, Vestbo J, Anzueto A, et al. Susceptibility to exacerbation in chronic obstructive pulmonary disease. *N Engl J Med*. 2010;363(12):1128–1138. doi:10.1056/NEJMoa0909883
6. Yang H, Xiang P, Zhang E, et al. Is hypercapnia associated with poor prognosis in chronic obstructive pulmonary disease? A long-term follow-up cohort study. *BMJ Open*. 2015;5(12):e008909. doi:10.1136/bmjopen-2015-008909
7. Almagro P, Barreiro B, Ochoa de Echaguen A, et al. Risk factors for hospital readmission in patients with chronic obstructive pulmonary disease. *Respiration*. 2006;73(3):311–317. doi:10.1159/000088092
8. Kessler R, Faller M, Fourgaut G, Menecier B, Weitzenblum E. Predictive factors of hospitalization for acute exacerbation in a series of 64 patients with chronic obstructive pulmonary disease. *Am J Respir Crit Care Med*. 1999;159(1):158–164. doi:10.1164/ajrccm.159.1.9803117
9. Böing S, Randerath WJ. Chronic hypoventilation syndromes and sleep-related hypoventilation. *J Thorac Dis*. 2015;7(8):1273–1285. doi:10.3978/j.issn.2072-1439.2015.06.10
10. Berry RB, Budhiraja R, Gottlieb DJ, et al. Rules for scoring respiratory events in sleep: update of the 2007 AASM manual for the scoring of sleep and associated Events. Deliberations of the sleep apnea definitions task force of the American Academy of Sleep Medicine. *J Clin Sleep Med*. 2012;8(5):597–619. doi:10.5664/jcsm.2172
11. Kitajima T, Marumo S, Shima H, et al. Clinical impact of episodic nocturnal hypercapnia and its treatment with noninvasive positive pressure ventilation in patients with stable advanced COPD. *Int J Chron Obstruct Pulm Dis*. 2018;13:843–853. doi:10.2147/COPD.S153200

12. O'Donoghue FJ, Catcheside PG, Ellis EE, et al. Sleep hypoventilation in hypercapnic chronic obstructive pulmonary disease: prevalence and associated factors. *Eur Respir J*. 2003;21(6):977–984. doi:10.1183/09031936.03.00066802
13. Marrone O, Salvaggio A, Insalaco G. Respiratory disorders during sleep in chronic obstructive pulmonary disease. *Int J Chron Obstruct Pulm Dis*. 2006;1(4):363–372. doi:10.2147/copd.2006.1.4.363
14. Collop NA, Salas RE, Delayo M, Gamaldo C. Normal sleep and circadian processes. *Crit Care Clin*. 2008;24(3):449–460. doi:10.1016/j.ccc.2008.02.002
15. Miller MR, Hankinson J, Brusasco V, et al. Standardisation of spirometry. *Eur Respir J*. 2005;26(2):319–338. doi:10.1183/09031936.05.00034805
16. Bolliger D, Steiner LA, Kasper J, Aziz OA, Filipovic M, Seeberger MD. The accuracy of non-invasive carbon dioxide monitoring: a clinical evaluation of two transcutaneous systems. *Anaesthesia*. 2007;62(4):394–399. doi:10.1111/j.1365-2044.2007.04987.x
17. Storre JH, Magnet FS, Dreher M, Windisch W. Transcutaneous monitoring as a replacement for arterial PCO<sub>2</sub> monitoring during nocturnal non-invasive ventilation. *Respir Med*. 2011;105(1):143–150. doi:10.1016/j.rmed.2010.10.007
18. Wedzicha JA, Seemungal TA. COPD exacerbations: defining their cause and prevention. *Lancet*. 2007;370(9589):786–796. doi:10.1016/S0140-6736(07)61382-8
19. Storre JH, Steurer B, Kabitz HJ, Dreher M, Windisch W. Transcutaneous PCO<sub>2</sub> monitoring during initiation of noninvasive ventilation. *Chest*. 2007;132(6):1810–1816. doi:10.1378/chest.07-1173
20. Kelly AM, Klim S. Agreement between arterial and transcutaneous PCO<sub>2</sub> in patients undergoing non-invasive ventilation. *Respir Med*. 2011;105(2):226–229. doi:10.1016/j.rmed.2010.11.010
21. Coccagna G, Lugaresi E. Arterial blood gases and pulmonary and systemic arterial pressure during sleep in chronic obstructive pulmonary disease. *Sleep*. 1978;1(2):117–124. doi:10.1093/sleep/1.2.117
22. Tabachnik E, Muller NL, Bryan AC, Levison H. Changes in ventilation and chest wall mechanics during sleep in normal adolescents. *J Appl Physiol Respir Environ Exerc Physiol*. 1981;51(3):557–564. doi:10.1152/jappl.1981.51.3.557
23. Ballard RD, Clover CW, Suh BY. Influence of sleep on respiratory function in emphysema. *Am J Respir Crit Care Med*. 1995;151(4):945–951. doi:10.1164/ajrccm.151.4.7697271
24. Dorrington KL, Balanos GM, Talbot NP, Robbins PA. Extent to which pulmonary vascular responses to PCO<sub>2</sub> and PO<sub>2</sub> play a functional role within the healthy human lung. *J Appl Physiol*. 2010;108(5):1084–1096. doi:10.1152/jappphysiol.90963.2008
25. Wells JM, Washko GR, Han MK, et al. Pulmonary arterial enlargement and acute exacerbations of COPD. *N Engl J Med*. 2012;367(10):913–921. doi:10.1056/NEJMoa1203830
26. Fletcher EC, Miller J, Divine GW, Fletcher JG, Miller T. Nocturnal oxyhemoglobin desaturation in COPD patients with arterial oxygen tensions above 60 mm Hg. *Chest*. 1987;92(4):604–608. doi:10.1378/chest.92.4.604
27. Fletcher EC, Donner CF, Midgren B, et al. Survival in COPD patients with a daytime PaO<sub>2</sub> greater than 60 mm Hg with and without nocturnal oxyhemoglobin desaturation. *Chest*. 1992;101(3):649–655. doi:10.1378/chest.101.3.649
28. Akashiba T, Ishikawa Y, Ishihara H, et al. The Japanese Respiratory Society noninvasive positive pressure ventilation (NPPV) Guidelines (second revised edition). *Respir Investig*. 2017;55(1):83–92. doi:10.1016/j.resinv.2015.11.007
29. Tsuboi T, Oga T, Machida K, et al. PaCO<sub>2</sub> six months after the initiation of long-term noninvasive ventilation in patients with COPD. *Intern Med*. 2011;50(6):563–570. doi:10.2169/internalmedicine.50.4310

## International Journal of Chronic Obstructive Pulmonary Disease

Dovepress

### Publish your work in this journal

The International Journal of COPD is an international, peer-reviewed journal of therapeutics and pharmacology focusing on concise rapid reporting of clinical studies and reviews in COPD. Special focus is given to the pathophysiological processes underlying the disease, intervention programs, patient focused education, and self management protocols. This journal is indexed on PubMed Central, MedLine and CAS. The manuscript management system is completely online and includes a very quick and fair peer-review system, which is all easy to use. Visit <http://www.dovepress.com/testimonials.php> to read real quotes from published authors.

Submit your manuscript here: <https://www.dovepress.com/international-journal-of-chronic-obstructive-pulmonary-disease-journal>