

Adherence to current guidelines for chronic obstructive pulmonary disease (COPD) among patients treated with combination of long-acting bronchodilators or inhaled corticosteroids

Carl Victor Asche^{1,2}

Shelah Leader³

Craig Plauschinat⁴

Swetha Raparla¹

Ming Yan¹

Xiangyang Ye¹

Dave Young¹

¹Department of Pharmacotherapy, University of Utah College of Pharmacy, Salt Lake City, Utah,

²Center for Outcomes Research, University of Illinois College of Medicine at Peoria, Peoria, Illinois,

³Formerly of Health Economics and Outcomes Research, Novartis Pharmaceuticals Corporation, East Hanover, New Jersey, ⁴Health Economics and Outcomes Research, Novartis Pharmaceuticals Corporation, East Hanover, New Jersey, USA

Background: To estimate the potential cost savings by following the current Global Initiative for Chronic Obstructive Lung Disease (GOLD) guideline recommendations in patients being treated for chronic obstructive pulmonary disease (COPD) with the combination of long-acting β_2 -agonist (LABA), long-acting muscarinic antagonist (LAMA) or inhaled corticosteroids (ICS).

Methods: The Geisinger Health System (GHS) database was utilized to identify subjects between January 1, 2004 to March 12, 2007. The index date was based on the first prescription of a LAMA plus LABA, LAMA plus LABA/ICS, or LABA plus ICS. Patients were included in the study if they: had a COPD diagnosis; had data representative of treatment 12 months prior to and 12 months post index date; were 40 years of age or over; had no prior diagnosis for asthma; and had pulmonary function test (PFT) data. We examined the baseline characteristics of these patients along with their healthcare resource utilization. Based on PFT data within 30 days of the index date, a subgroup was classified as adhering or non-adhering to GOLD guidelines.

Results: A total of 364 subjects could be classified as adhering or non-adherent to current GOLD guidelines based on their PFT results. The adherent subgroup received COPD medications consistent with current GOLD guidelines. Of the LAMA plus LABA cohort, 25 patients adhered and 39 patients were non-adherent to current GOLD guidelines. In the cohort of LABA plus ICS, 74 patients were adherent and 180 patients non-adherent to current GOLD guidelines. In the cohort of LAMA plus LABA/ICS, 21 patients were adherent and 25 patients non-adherent to current GOLD guidelines. GOLD adherence was associated with mean total cost of all services savings of \$5,889 for LAMA plus LABA, \$3,330 for LABA + ICS, and \$10,217 for LAMA plus LABA/ICS cohorts.

Conclusion: Staging of COPD with a PFT and adherence to current GOLD guidelines was associated with lower costs in subjects with moderate to severe COPD. Appropriate use of LAMA plus LABA, LABA plus ICS, and LAMA plus LABA/ICS has economic as well as clinical benefits for patients and payers.

Keywords: cost, COPD, adherence, GOLD guidelines

Correspondence: Carl V Asche
Director, Center for Outcomes Research,
University of Illinois College of Medicine
at Peoria, One Illini Drive, Box 1649,
Peoria, IL, 61656, USA
Tel +1 309 671 8461
Fax +1 309 671 8438
Email cva@uic.edu

Introduction

Chronic obstructive pulmonary disease (COPD), characterized by shortness of breath and other breathing related problems, is the fourth leading cause of death in the United States (US), with more than 120,000 deaths every year.¹ Although the National Heart, Lung, and Blood Institute (NHLBI) of the National Institutes of Health (NIH)

reports that 24 million people are affected with COPD, only 10 million adults were estimated to be diagnosed with COPD in 2000.² The current prevalence rate of COPD is 12 million, with another likely 12 million individuals not knowing that they have disease.¹ The economic burden (direct and indirect costs) of COPD to the US was estimated to be \$30.4 billion in 2000 which increased to nearly \$32.1 billion in 2002.^{3,4} In 2002, the direct medical costs constituted \$18 billion and indirect costs (related to morbidity and mortality) were \$14.1 billion.³ Prescription drug costs accounted for \$2.7 billion (20.6%) of the total direct COPD costs.

According to the current Global Initiative for Chronic Obstructive Lung Disease (GOLD) report, COPD is a disease state characterized by airflow limitation that is not fully reversible.⁵ Both small airway disease (obstructive bronchiolitis) and parenchymal destruction lead to chronic airflow limitations in COPD that varies from individual to individual.⁶ Long-term smoking is the most common risk factor associated with COPD and accounts for 80% to 90% of the cases.^{7,8} In addition, a current smoker is ten times more likely to die from COPD compared to a non-smoker. Other COPD risk factors include heredity, second-hand smoke, exposure to air pollution at work and in the environment, and a history of childhood respiratory infections.⁹

Spirometry is recommended by the current GOLD guidelines to measure airflow limitation as this is the most widely available, reproducible test of lung function. Spirometry measures an individual's forced expiratory volume in 1 second (FEV₁) and forced expiratory vital capacity (FVC) based on which COPD is classified into four stages of severity.⁵ The current GOLD guidelines' approach to the management of disease is driven by the need to control symptoms. Bronchodilators are central to such a therapeutic approach. The main bronchodilators are β_2 -agonists, anticholinergics, theophylline and a combination of these medications. The choice among these medications depends on individual response, availability, and cost. Short-acting inhaled bronchodilators are recommended from Stage I onward, on an as-needed basis. Long-acting inhaled bronchodilators should be added from Stage II onward, on a regular basis, for subjects whose symptoms are not controlled with as-needed short-acting bronchodilators. For stage III to IV, with a history of repeated exacerbations, regular treatment with inhaled corticosteroids is recommended in addition to long-acting bronchodilators.⁵ Also, the current GOLD guidelines'

caution that chronic treatment with oral glucocorticosteroids should be avoided.

The lack of association between FEV₁ and other elements of functional status has increased attention in the multi-systematic evaluation of COPD to determine severity.^{5,10}

Many subjects with COPD continue to be undiagnosed or undertreated, suggesting that the guidelines are not being fully utilized.^{10,11} There is scant empirical evidence in the literature that investigates disparity between current guidelines and practice. The objective of this study is to estimate the potential cost savings by following current GOLD guideline recommendations in patients being treated with the combination of long-acting β_2 -agonist (LABA), long-acting muscarinic antagonist (LAMA) or inhaled corticosteroids (ICS). The strength of this study is that it utilized lung function measured by spirometry to define severity.

Methods

Data source

The study utilized data from the Geisinger Health System (GHS), which was founded in 1915 and is a physician-led organization comprising of 650 plus physicians, 75 medical and surgical specialties, and 42 pediatric medical and surgical subspecialties. GHS, which also has one of the largest not-for-profit rural health maintenance organizations in the US, has three existing hospitals (primary to quaternary care) and 41 community practice offices. The GHS service area is limited to the state of Pennsylvania. The core of the data originates from an electronic health record (EHR) infrastructure that contains longitudinal clinical patient data including lab results for over 3 million subjects from 1996 to 2008. In addition to the electronic health record core, the database has Geisinger incurred medical-service cost, charge, and payment data dating back to 2003.

Study design and time frame

A retrospective cohort study design was utilized and the study duration ranged from January 2004 to December 2007. The date when the subjects were first prescribed COPD therapies of interest – LAMA plus LABA or LABA plus ICS, or LAMA plus LABA/ICS – was identified as the index date during the study period. Patient data for the 12 months prior to the index date was evaluated to identify baseline characteristics. Patient data representative of 12 months after the index date were examined to compare

the healthcare utilization costs of combination therapies, LAMA plus LABA to LABA plus ICS, and LAMA plus LABA/ICS based on GOLD guidelines.

Study population

Subjects were eligible for this study if they had a diagnosis of COPD (identified by International Classification of Diseases, Clinical Modification Ninth Revision [ICD9-CM] codes for COPD: 491, 492, and 496), did not have an asthma diagnosis (ICD-9-CM: 493.0), were at least 40 years of age and continuously enrolled for at least 12 months pre- and post-index date. In observational, retrospective COPD research, 40 years of age or older is routinely used as an inclusion criteria to correctly identify the COPD population and rule-out miscoding or misdiagnosis of asthma, which is typically a younger population.

In addition, the subjects were required to have a prescription for combination therapies, LAMA plus LABA, LABA plus ICS, or LAMA plus LABA/ICS. Based on these treatments, subjects were categorized into three mutually exclusive cohorts. The subjects were excluded if their prescribed therapy was switched from the index date therapy to another within 90 days of start of the therapy. For the subgroup analysis, subjects were also required to have pulmonary function test (PFT) data (available from two clinics of GHS).

Identification of demographic and clinical characteristics

The demographic characteristics that were identified in the study are age, gender, race (white, black, Hispanic), smoking history (current, passive, former, never, unknown), employment status (employed, unemployed), and insurance status (Medicaid, Medicare, commercial, self-pay). The clinical characteristics that were assessed are duration of COPD prior to index date and through index day, number of

office visits, emergency room (ER) visits, hospitalizations, number of exacerbations defined as sum of length of stay during hospitalizations, and number of prescriptions for antibiotics and prednisone, concomitant medications (related to COPD only and excluding the study drugs) prior to index date, mean baseline Deyo–Charlson's comorbidity index (DCI),¹² total encounter cost to Geisinger for COPD including hospital and physician costs, and PFT data ($FEV_1\%$ predicted and $FEV_1/FVC\%$ predicted). For LAMA plus LABA cohort, subjects were classified as adhering to GOLD guideline group, if the medications were prescribed from stage II COPD onwards and similarly stage III onwards for LABA plus ICS and LAMA plus LABA/ICS cohorts. All the costs (encounters) were adjusted to 2006 US dollars based on the medical care component of the consumer price index (CPI).¹³ PFT data within 30 days of the index date were used to classify subjects into adhering and non-adhering to current GOLD guidelines (Table 1) groups.

Statistical analysis

Descriptive statistics were utilized to depict the study population characteristics at baseline. To determine if there were any differences in baseline characteristics (both demographic and clinical) among the three drug therapy cohorts, Chi-square tests for categorical variables, and *t*-tests for continuous variables (Wilcoxon-Mann-Whitney test was used if $n < 30$) were utilized. The total cost for adhering and non-adhering groups were compared by using *t*-test at baseline and follow-up. All results were measured at the 5% significant level ($P \leq 0.05$) and SAS version 9.1 (SAS Institution Inc, Cary, NC) was used for the analyses.

Results

A total of 30,024 subjects initially received one of the study drug combinations between 2004 and 2007 and of this group

Table 1 GOLD treatment guidelines

Severity level	Recommended therapy
Stage I (mild) ($FEV_1/FVC < 70\%$ and $FEV_1 \geq 80\%$ predicted)	Short-acting inhaled bronchodilator as needed and if not available, a regular treatment with slow-release theophylline serves as an alternative treatment.
Stage II (moderate) ($FEV_1/FVC < 70\%$ and FEV_1 predicted between 80% and 50%)	One or more long-acting bronchodilators as needed and rehabilitation to reduce symptoms improve quality of life and increase physical and emotional participation in everyday functions.
Stage III (severe) ($FEV_1/FVC < 70\%$ and FEV_1 predicted between 50% and 30%)	Regular treatment with inhaled glucocorticosteroids if repeated exacerbations in addition to regular bronchodilators.
Stage IV (very severe) ($FEV_1/FVC < 70\%$ and $FEV_1 < 30\%$)	Long-term chronic oxygen therapy if respiratory failure and surgical treatment should be considered.

Abbreviations: FEV_1 , forced expiratory volume in 1 second; FVC, forced expiratory capacity.

70% ($n = 20,923$) were ≥ 40 years old. After applying the other inclusion criteria, 68 subjects were identified in LAMA plus LABA cohort, 387 in LABA plus ICS, and 57 in LAMA plus LABA/ICS cohorts. A total of 364 subjects had PFT data permitting assessment of compliance with GOLD guidelines based on their stage of COPD (Figure 1).

Baseline characteristics (demographic and clinical)

A summary of baseline characteristics is provided in Table 2. The mean age of subjects ranged from 66 to 68 years across

all the cohorts of the study. The proportion of males (range: 60%–71%) was higher than females (range: 29%–40%) across the study cohorts with predominant race (99%) being white. The majority of study subjects were former smokers (64%), and unemployed (88%) with a commercial insurance (60%).

A greater number of subjects (51%) in all the treatment cohorts had chronic airway obstruction, not otherwise specified as a COPD diagnosis as opposed to chronic bronchitis and emphysema. The mean DCI ranged from 3.06 to 3.82 and mean number of concomitant medications

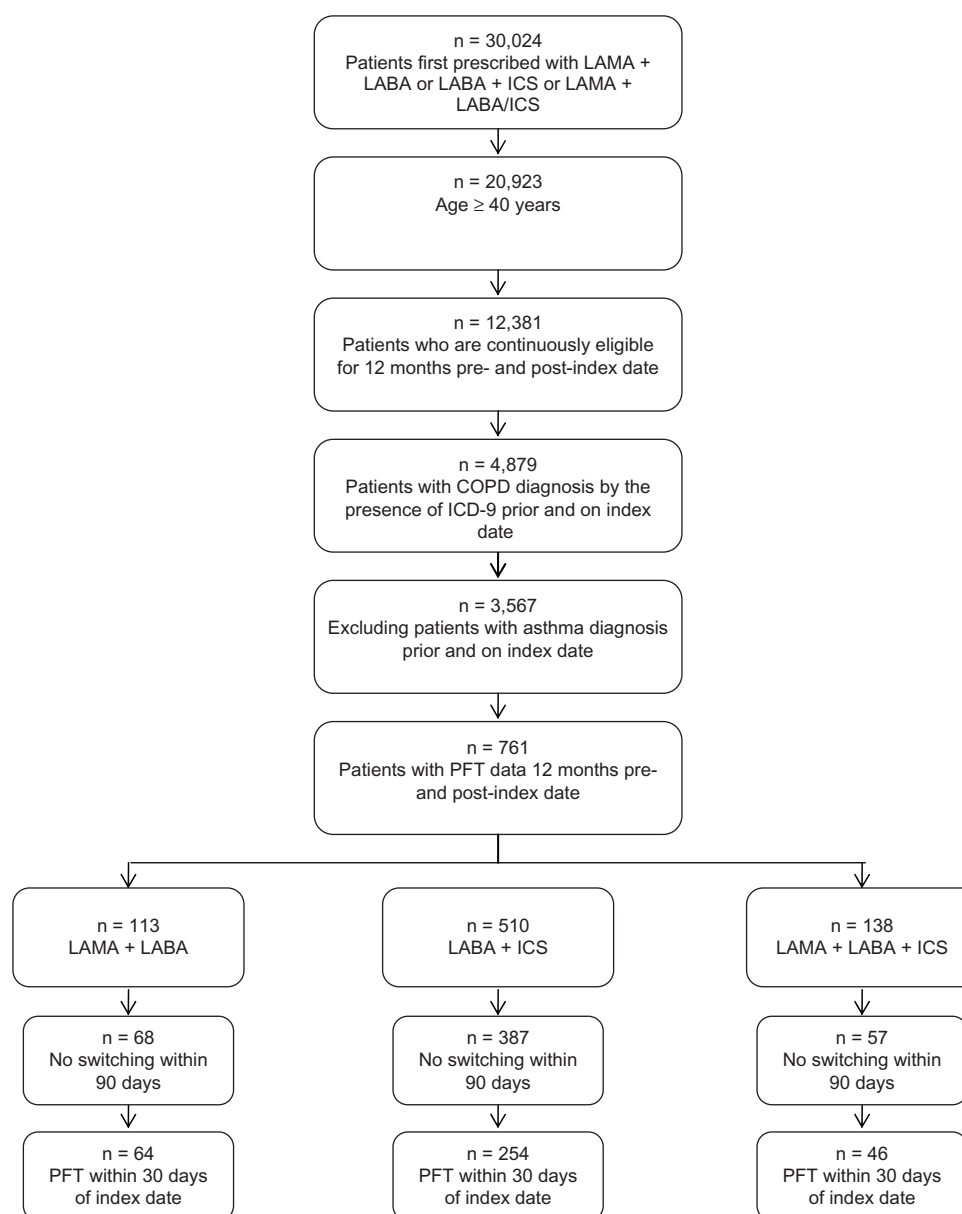


Figure 1 Population identification.

Abbreviations: LABA, long-acting β_2 -agonist; LAMA, long-acting muscarinic antagonist; ICS, inhaled corticosteroids; COPD, chronic obstructive pulmonary disease; PFT, pulmonary function test.

Table 2 Overall patient characteristics at baseline

Characteristics	LAMA plus LABA N/mean (% or SD)	LABA plus inhaled corticosteroids N/mean (% or SD)	LAMA plus LABA/ICS N/mean (% or SD)
N	68	387	57
Age	66.46 (9.67)	66.08 (10.88)	67.74 (10.57)
Gender			
Males	48 (70.59%)	233 (60%)	39 (68.42%)
Females	20 (29.41%)	154 (40%)	18 (31.58%)
Race			
White	66 (97.06%)	385 (99.5%)	57 (100%)
Black	2 (2.94%)	—	—
Hispanic	—	2 (0.52%)	—
Employment			
Employed	9 (13.24%)	44 (11.37%)	6 (10.53%)
Unemployed	58 (85.29%)	343 (89%)	51 (89.47%)
Unknown	1 (1.47%)	27 (1.17%)	—
Insurance status			
Medicaid	1 (1.47%)	19 (4.91%)	2 (3.51%)
Medicare	25 (36.76%)	135 (35%)	15 (26.32%)
Commercial	42 (61.76%)	224 (58%)	39 (68.42%)
Self-pay	—	7 (1.81%)	1 (1.75%)
VA	—	1 (0.26%)	—
Unknown	—	1 (0.26%)	—
Smoking history			
Current smoker	13 (22.81%)	92 (23.77%)	10 (17.54%)
Passive smoker	1 (1.75%)	1 (0.26%)	—
Former smoker	42 (73.68%)	245 (63.31%)	41 (71.93%)
Never smoker	4 (7.02%)	33 (8.53%)	2 (3.51%)
Unknown	8 (14.04%)	14 (3.62%)	4 (7.02%)
COPD diagnosis			
Chronic bronchitis	4 (5.88%)	43 (11.11%)	3 (5.26%)
Emphysema	31 (45.59%)	94 (24.29%)	16 (28.07%)
Chronic airway obstruction, not otherwise	24 (35.29%)	209 (54.01%)	27 (47.37%)
Any combinations	9 (13.24%)	39 (10.08%)	11 (19.3%)
Mean DCI	3.74 (2.45)	3.06 (2.07)*	3.82 (2.34)
Mean number of concomitant medications	9.53 (12.85)	8.18 (17.62)	16 (18.59)*
Duration of COPD prior to index date	189 (153)	139 (150)*	203 (161)

Note: If the diagnosis of COPD is more than 1 year, the duration of COPD prior to index date is set to 365 days. Charlson's comorbidity index; *significant at <0.05 level compared to LABA + LAMA cohort.

Abbreviations: COPD, chronic obstructive pulmonary disease; DCI, Deyo–Charlson's comorbidity index; LAMA, long-acting muscarinic antagonist; LABA, long-acting β_2 -agonist; ICS, inhaled corticosteroids; CCI, Charlson Comorbidity Index; SD, standard deviation.

ranged from 8.18 to 16 across the cohorts. The duration of COPD prior to index date ranged from 139 to 203 days among the cohorts of the study (Table 2). The mean DCI ranged from 3.06–3.82 for the three cohorts with a significant difference between LAMA + LABA and LABA/ICS cohorts. The mean number of concomitant medications ranged from 8.18–16 across the cohorts with a significant difference between LAMA + LABA and LAMA + LABA/ICS cohorts. The duration of COPD prior to index date ranged from 139–203 days among the cohorts of the study with a significant difference between LAMA + LABA and LABA/ICS cohorts.

Subjects prescribed LAMA plus LABA differed significantly ($P < 0.05$) by race, smoking history, COPD diagnosis, mean DCI and duration of COPD prior to index date compared to LABA plus ICS. There was a statistically significant difference ($P < 0.05$) observed in only mean number of concomitant medications for LAMA plus LABA cohort when compared with LAMA plus LABA/ICS. A summary of baseline health care utilization and total Geisinger encounter costs (in 2006 US dollars) are presented in Table 3. In the pre-index date period (baseline), subjects prescribed LAMA plus LABA differed significantly ($P < 0.05$) in mean number of outpatient visits (5 vs

Table 3 Health care utilization and total Geisinger encounter costs for overall COPD subjects at baseline

Outcomes	LAMA plus LABA (n = 68) N/mean (% or SD)	LABA plus ICS (n = 387) N/mean (% or SD)	LAMA plus LABA/ICS (n = 57) N/mean (% or SD)
Inpatient			
Number of admissions	2.1 (1.5)	1.9 (1.2)	3.1 (2.1)
Number of days in hospital	17.8 (45.1)	8.9 (11.6)	14.8 (13.3)
Emergency room visit			
Number of admissions	2 (1)	1.1 (0.3)	1.5 (0.7)
Outpatient			
Number of outpatient visits	5 (3.9)	3.5 (3.2)	8.3 (8.7)
Number of office visits	2.8 (2.2)	2.4 (2)	4.7 (4.1)
Oxygen use	42 (61.76)	91 (23.51)	21 (36.84)
Hospital costs	5,661.3 (10,937.6)	4,701.7 (15,910)	10,553.3 (24,066.2)
Procedure costs	824.8 (674.4)	492 (468.9)	1065.9 (861)
Drug administering costs	750.6 (2,791.8)	40 (81)	1.9 (2.2)
Physician costs	1,371.3 (2,480.5)	995.2 (3,167)	2,109.9 (3,693.3)
Number of prescriptions for antibiotics and prednisone	4.4 (4)	3.3 (3)	6.1 (5.4)
Drug administering costs related to antibacterials and prednisone	20.5 (19.9)	19.2 (34.5)	35.4 (37.9)
Mean number of exacerbations	7.76 (8.69)	6.06 (9.07)	12.92 (14.72)
Total encounter costs to Geisinger	6,948.08 (13,084.5)	4,538.3 (16,976.84)	12,076.89 (27,032.88)

Note: Outpatient hospital cost, procedure cost and medication cost are not calculated if they are included in inpatient hospital cost.

Abbreviations: LAMA, long-acting muscarinic antagonist; LABA, long-acting β_2 -agonist; ICS, inhaled corticosteroids; hospital costs include inpatient hospital costs and outpatient hospital costs; SD, standard deviation.

3.5 or 8.3), oxygen use (62% vs 24% or 37%) as compared to LABA plus ICS or LAMA plus LABA/ICS groups respectively. Compared to subjects with LAMA plus LABA, the mean number of office visits (2.8 vs 2.4 or 4.7) and mean number of hospitalizations (2.1 vs 1.9 or 3.1) were found to be significantly different ($P < 0.05$) in only LAMA plus LABA/ICS group. There were no statistically significant differences identified in mean hospital costs (\$5,661 vs \$4,701 or \$10,553), mean physician costs (\$1,371 vs \$995 or \$2,110), and total encounter costs to Geisinger (\$6,948 vs \$4,538 or \$12,077).

The baseline predicted values of FEV₁%, FEV₁/FVC%, and FVC% ranged from 41.9 to 55.41, 70.44 to 78.46, and 61.44 to 73.51 respectively with statistically significant differences ($P < 0.05$) in FEV₁% and FVC% predicted values in LAMA plus LABA/ICS cohort as compared to LAMA plus LABA cohort. Also, significant differences were determined in mean change of FVC% predicted values between baseline and follow-up periods in LABA plus ICS and LAMA plus LABA/ICS cohorts. The mean change of FEV₁% predicted values was found to be significantly different ($P < 0.05$) in only LAMA plus LABA/ICS cohort (Table 4). This is noteworthy as anything greater than 5% in terms of predicted values is regarded as being clinically significant.

Of the overall cohort, 364 subjects had PFT data within 30 days of the index date and thus could be classified as

adhering or not adhering to current GOLD guidelines. Of 68 patients in the LAMA plus LABA cohort, 25 patients adhered and 39 patients were non-adherent to current GOLD guidelines. There are 387 patients in the cohort of LABA plus ICS with 74 patients adhering and 180 patients non-adherent to current GOLD guidelines. There are 57 patients in the cohort of LAMA plus LABA/ICS with 21 patients adhering and 25 patients non-adherent to current GOLD guidelines. Overall, 33% of the 364 subjects received medication therapy consistent with current GOLD guidelines. The mean cost savings associated with adherence to GOLD guidelines were: \$5,889 for LAMA plus LABA cohort, \$3,330 for LABA plus ICS cohort, and \$10,217 for LAMA + LABA/ICS cohort respectively (Table 5).

Discussion

According to current GOLD guidelines, COPD medications if prescribed according to the stages of severity will prevent disease progression, relieve symptoms, improve health status, prevent exacerbations, and eventually reduce mortality. The classification of subjects according to their pulmonary function data as outlined in current GOLD guidelines has been depicted as an independent predictor for exacerbation-related hospitalizations, which implies that the severe subjects (Stage IV) tend to have more hospitalizations as a result of an exacerbation.¹⁴ In addition, it has been established that

Table 4 PFT values of the study population at baseline and mean change from baseline at follow-up

PFT value	LAMA plus LABA (n = 68)		LABA plus inhaled corticosteroids (n = 387)		LAMA plus LABA/ICS (n = 57)		Tiotropium plus LABA vs LABA plus ICS		Tiotropium plus LABA vs tiotropium plus LABA/ICS	
	Mean (SD) at baseline	Mean change from baseline (SD)	Mean (SD) at baseline	Mean change from baseline (SD)	Mean (SD) at baseline	Mean change from baseline (SD)	P-value	P-value		
FEV ₁	1.47 (0.61)	0.04 (0.21)	1.51 (0.70)	0.02 (0.17)	1.42 (0.63)	0.01 (0.18)	0.0400*	0.4160		
FEV ₁ /FVC	50.35 (15.42)	1.63 (5.41)*	57.94 (17.81)	0.14 (4.24)	54.38 (12.57)	-0.64 (2.60)	0.0562	0.0057*		
FVC	2.92 (0.95)	0.00 (0.35)	2.58 (0.87)	-0.03 (0.36)	2.60 (0.91)	0.02 (0.27)	0.5969	0.6964		

Note: t-test for continuous variables (*significant at <0.05 level).

Abbreviations: LAMA, long-acting muscarinic antagonist; LABA, long-acting β_2 -agonist; ICS, inhaled corticosteroids; FEV₁, forced expiratory volume in 1 second; FVC, forced vital capacity; PFT, pulmonary function test; SD, standard deviation.

Table 5 Total cost savings of adhering to the GOLD guidelines

Variables	LAMA plus LABA Mean (SD)		LABA/ICS Mean (SD)		LAMA plus LABA/ICS Mean (SD)	
	Adhering	Non-adhering	Adhering	Non-adhering	Adhering	Non-adhering
Number of subjects	25	39	74	180	21	25
Total encounter costs at baseline	9,192 (17,132)	5,940 (10,252)	5,840 (28,722)	5,032 (14,891)	8,642 (16,621)	16,628 (36,710)
Total encounter costs at follow-up	8,960 (13,268)	12,204 (21,340)	9,485 (16,663)	13,612 (26,139)	9,523 (14,976)	28,189 (38,342)
Change in total encounter cost between follow-up and baseline	-1,307 (20,090)	4,582 (17,302)	3,497 (32,766)	6,827 (26,614)	881 (19,532)	11,098 (51,647)
Total cost savings of adhering to GOLD guidelines	\$5,889		\$3,330		\$10,217	

Notes: Total cost savings of adhering to current GOLD guidelines = (change in total cost for subjects adhering to current GOLD guidelines – change in total cost for subjects non-adhering to current GOLD guidelines). No significant differences were observed between LAMA plus LABA and LABA plus ICS or LAMA plus LABA/ICS cohorts in total encounter costs at baseline; follow-up; and change between follow-up and baseline ($P > 0.05$).

Abbreviations: LAMA, long-acting muscarinic antagonist; LABA, long-acting β_2 -agonist; ICS, inhaled corticosteroids; SD, standard deviation.

failure to use medications in accordance with guidelines increases the burden of the disease.^{15–19} However, there exists a gap among primary care physicians and pulmonologists in implementing or being consistent with the guidelines for diagnosing and treating COPD subjects.²⁰ There is evidence that mild to moderate COPD subjects are not being treated optimally and that ICS were frequently prescribed by both general practitioners and pulmonologists contrary to current guideline recommendations.^{21,22} Furthermore, improved survival, health status, and lung function with fewer exacerbations were observed with combination therapy as compared to monotherapy.^{23,24} Interestingly, a study found that hospitalization leads to improved adherence to GOLD guidelines.²⁵ This study is unique in characterizing the cost savings associated with adherence to current GOLD guidelines.

Our study found that 66% of subjects with PFT data were prescribed medications, inconsistent with their spirometry results and current GOLD guideline recommendations. Adherence with current GOLD guidelines was associated with cost savings in all three cohorts. Subjects prescribed LAMA plus LABA/ICS in accordance with current GOLD guidelines had the highest mean cost saving of \$10,217 followed by LAMA plus LABA (\$5,889) and LABA plus ICS (\$3,330). These are interesting findings as LAMA plus LABA and LABA plus ICS groups are similar at baseline except in the case of LABA plus ICS cohort having had COPD for approximately 1 year less and as a result they are on fewer medications. As such, it is difficult to determine if the cost difference we are observing is attributable to the baseline differences.

Limitations

The GHS database, like any other electronic medical record (EMR) database, may not capture the entire medical history of a patient, specifically if the patient is seen by non-network providers. In addition, an EMR does not provide any information as to whether a service was delivered or a prescription was purchased or refilled by the patient. Hence, the study assumed that patients adhered perfectly to the prescribed therapies of interest. Moreover, an EMR database has missing data related to out of network healthcare utilizations including hospitalizations, ER visits, office visits etcetera, and no data were identified for actual drug costs, whereas the drug administering costs were present. Thus the true cost of treatment may be higher than reported here. Furthermore, a relatively small number of subjects that met the other inclusion/exclusion criteria had a record of PFT data.

Conclusion

Adherence with current GOLD guidelines is associated with lower healthcare utilization costs in subjects with moderate to severe COPD treated with LAMA plus LABA, LABA plus ICS or LAMA plus LABA/ICS therapies.

Disclosure

CA, SR, MY, XY, and DY report no conflict of interest in this work. SL was an independent consultant to Novartis Pharmaceuticals Corporation during this study. CP is an employee of Novartis Pharmaceuticals Corporation, who provided funding to conduct the study.

References

1. The National Heart, Lung, and Blood Institute Health Information Center. Lung information. <http://www.nhlbi.nih.gov/health/public/lung/index.htm>. Accessed March 25, 2010.
2. Center for Disease Control and Prevention. Facts about chronic obstructive pulmonary disease (COPD). <http://www.cdc.gov/copd/copdfaq.htm>. Accessed March 23, 2010.
3. Skrepnek GH, Skrepnek SV. Epidemiology, clinical and economic burden, and natural history of chronic obstructive pulmonary disease and asthma. *Am J Manag Care*. Jul 2004;10(Suppl 5):S129–S138.
4. Tovar JM, Gums JG. Monitoring pulmonary function in asthma and COPD: point-of-care testing. *Ann Pharmacother*. 2004;38(1):126–133.
5. Global Initiative for Chronic Obstructive Lung Disease (GOLD). Global strategy for the diagnosis, management, and prevention of chronic obstructive pulmonary disease: 2008 update. <http://www.goldcopd.com>. Accessed March 22, 2010.
6. Daimon T, Fujimoto K, Tanaka K, et al. Volume of pulmonary lobes and segments in chronic obstructive pulmonary diseases calculated using newly developed three-dimensional software. *Jpn J Radiol*. Apr 2009;27(3):115–122.
7. Bresnitz EA. Epidemiology of advanced lung disease in the United States. *Clin Chest Med*. 1997;18(3):421–433.
8. Kabir Z, Connolly GN, Koh HK, Clancy L. Chronic Obstructive Pulmonary Disease hospitalization rates in Massachusetts: a trend analysis. *QJM*. 2010;103(3):163–168.
9. Edelman NH, Kaplan RM, Buist AS, et al. Chronic obstructive pulmonary disease. Task Force on Research and Education for the Prevention and Control of Respiratory Diseases. *Chest*. 1992;102(3 Suppl):243S–256S.
10. Buist AS. Guidelines for the management of chronic obstructive pulmonary disease. *Respir Med*. 2002;96 Suppl C:S11–S16.
11. Ramsey SD. Suboptimal medical therapy in COPD: exploring the causes and consequences. *Chest*. 2000;117(2 Suppl):33S–37S.
12. Deyo RA, Cherkin DC, Ciol MA. Adapting a clinical comorbidity index for use with ICD-9-CM administrative databases. *J Clin Epidemiol*. 1992;45(6):613–619.
13. United States Department of Labor. Consumer Price Index for Medical Care. <http://www.bls.gov/CPI/>. Accessed October 15, 2009.
14. Lusuadi M, Lucioni C, De Benedetto F, Mazzi S, Sanguinetti CM, Donner CF. GOLD severity stratification and risk of hospitalisation for COPD exacerbations. *Monaldi Arch Chest Dis*. 2008;69(4):164–169.
15. Miravittles M, Mayordomo C, Artés M, Sánchez-Agudo L, Nicolau F, Segú JL. Treatment of chronic obstructive pulmonary disease and its exacerbations in general practice. EOLO Group. Estudio Observacional de la Limitación Obstructiva al Flujo aEreo. *Respir Med*. 1999;93(3):173–179.
16. Esteban C, Moraza J, Quintana JM, Aburto M, Capelastegui A. Use of medication and quality of life among patients with COPD. *Respir Med*. 2006;100(3):487–495.

17. López Varela MV, Muino A, Pérez Padilla R, et al. Treatment of chronic obstructive pulmonary disease in 5 Latin American cities: the PLATINO study. *Arch Bronconeumol*. 2008;44(2):58–64.
18. Rennard S, Decramer M, Calverley PM, et al. Impact of COPD in North America and Europe in 2000: subjects' perspective of Confronting COPD International Survey. *Eur Respir J*. 2002;20(4):799–805.
19. Roche N, Lepage T, Bourcereau J, Terrioux P. Guidelines versus clinical practice in the treatment of chronic obstructive pulmonary disease. *Eur Respir J*. 2001;18(6):903–908.
20. Glaab T, Banik N, Rutschmann OT, Wencker M. National survey of guideline-compliant COPD management among pneumologists and primary care physicians. *COPD*. 2006;3(3):141–148.
21. Decramer M, Bartsch P, Pauwels R, Yernault JC. Management of COPD according to guidelines. A national survey among Belgian physicians. *Monaldi Arch Chest Dis*. 2003;59(1):62–80.
22. Izquierdo-Alonso JL, de Miguel-Díez J. Economic impact of pulmonary drugs on direct costs of stable chronic obstructive pulmonary disease. *COPD*. 2004;1(2):215–223.
23. Soriano JB, Vestbo J, Pride NB, Kiri V, Maden C, Maier WC. Survival in COPD patients after regular use of fluticasone propionate and salmeterol in general practice. *Eur Respir J*. 2002;20(4):819–825.
24. Calverley PM, Anderson JA, Celli B, et al. Salmeterol and fluticasone propionate and survival in chronic obstructive pulmonary disease. *N Engl J Med*. 2007;356(8):775–789.
25. Incalzi RA, Corsonello A, Pedone C, et al. From Global Initiative for Chronic Obstructive Lung Disease (GOLD) guidelines to current clinical practice : an overview of the pharmacological therapy of stable chronic obstructive pulmonary disorder. *Drugs Aging*. 2006;23(5):411–420.

International Journal of COPD

Publish your work in this journal

The International Journal of COPD is an international, peer-reviewed journal of therapeutics and pharmacology focusing on concise rapid reporting of clinical studies and reviews in COPD. Special focus is given to the pathophysiological processes underlying the disease, intervention programs, patient focused education, and self management protocols.

Submit your manuscript here: <http://www.dovepress.com/international-journal-of-copd-journal>

Dovepress

This journal is indexed on PubMed Central, MedLine and CAS. The manuscript management system is completely online and includes a very quick and fair peer-review system, which is all easy to use. Visit <http://www.dovepress.com/testimonials.php> to read real quotes from published authors.