

# Increased leptin/leptin receptor pathway affects systemic and airway inflammation in COPD former smokers

Andreina Bruno<sup>1</sup>  
Marinella Alessi<sup>2</sup>  
Simona Soresi<sup>2</sup>  
Anna Bonanno<sup>1</sup>  
Loredana Riccobono<sup>1</sup>  
Angela Marina Montalbano<sup>1</sup>  
Giusy Daniela Albano<sup>1</sup>  
Mark Gjomarkaj<sup>1</sup>  
Mirella Profita<sup>1</sup>

<sup>1</sup>Institute of Biomedicine and Molecular Immunology, Italian National Research Council, Palermo, Italy; <sup>2</sup>Dipartimento Biomedico di Biomedicina Interna e Specialistica, University Palermo, Italy

**Background:** Leptin, a hormone produced mainly by adipose tissue, regulates food intake and energy expenditure. It is involved in inflammatory diseases such as chronic obstructive pulmonary disease (COPD) and its deficiency is associated with increased susceptibility to the infection. The leptin receptor is expressed in the lung and in the neutrophils.

**Methods:** We measured the levels of leptin, tumor necrosis factor alpha (TNF- $\alpha$ ) and soluble form of intercellular adhesion molecule-1 (sICAM-1) in sputum and plasma from 27 smoker and former smoker patients with stable COPD using ELISA methods. Further we analyzed leptin and its receptor expression in sputum cells from 16 COPD patients using immunocytochemistry.

**Results:** In plasma of COPD patients, leptin was inversely correlated with TNF- $\alpha$  and positively correlated with the patient weight, whereas the levels of sICAM-1 were positively correlated with TNF- $\alpha$ . In sputum of COPD patients leptin levels were correlated with forced expiratory volume in 1 second/forced vitality capacity. Additionally, increased levels of sputum leptin and TNF- $\alpha$  were observed in COPD former smokers rather than smokers. Further the expression of leptin receptor in sputum neutrophils was significantly higher in COPD former smokers than in smokers, and the expression of leptin and its receptor was positively correlated in neutrophils of COPD former smokers.

**Conclusion:** Our findings suggest a role of leptin in the local and systemic inflammation of COPD and, taking into account the involvement of neutrophils in this inflammatory disease, describe a novel aspect of the leptin/leptin receptor pathway in the regulation of host defense after smoking cessation.

**Keywords:** COPD, smokers, inflammation, leptin, neutrophils

## Introduction

Chronic obstructive pulmonary disease (COPD) is characterized by progressive airflow limitation and is associated with an abnormal inflammatory response to inhaled noxious particles, including cigarette smoke. Current or previous exposure to cigarette smoke is usually reported by COPD patients, and smoking cessation is the single most effective intervention to reduce the risk of developing COPD and stopping its progression.<sup>1</sup> Clinical and functional heterogeneity is a hallmark of COPD, and the forced expiratory volume in 1 second (FEV<sub>1</sub>) value and the FEV<sub>1</sub>/forced vitality capacity (FVC) ratio are considered the most important altered parameters of lung function in COPD patients.<sup>2</sup> In addition, patients with COPD exhibit a chronic inflammatory response of the airways, with a persistent inflammation within the proximal airways mainly characterized by an endoluminal influx of neutrophils and overproduction of mucus and proinflammatory cytokines.<sup>3</sup> The airways of these patients are often colonized

Correspondence: Mirella Profita  
Institute of Biomedicine and Molecular Immunology, Unit of Ex vivo/in vitro models to study Immunopathology and Pharmacology in Pulmonary Diseases, Via Ugo La Malfa, 153  
90146 Palermo, Italy  
Tel +39 09 1680 9121  
Fax +39 09 1680 9122  
Email profita@ibim.cnr.it

by mucoid bacteria attached to epithelium by a biofilm and purulent sputum is strongly associated with bacterial growth in COPD exacerbations.<sup>4</sup>

Leptin, initially discovered as a regulator of food intake and energy expenditure, is emerging as a pleiotropic cytokine involved in the recruitment, activation and survival of inflammatory cells.<sup>5</sup> In particular, via short and long isoforms of its receptor, it is able to regulate a variety of cell types including neutrophils, eosinophils, T-lymphocytes, and monocytes,<sup>6-8</sup> and to activate neutrophils by the release of reactive oxygen species (ROS).<sup>9,10</sup> Studies performed in age- and gender-matched patients with stable COPD have demonstrated that plasma soluble form of intercellular adhesion molecule-1 (sICAM-1) can be considered a marker of inflammation<sup>11</sup> and that its levels are positively correlated with body mass index (BMI) and tumor necrosis factor alpha (TNF- $\alpha$ ).<sup>12</sup> Moreover, temporary disturbances in the energy balance are present during an acute exacerbation of COPD and are related to increased leptin concentrations and to the systemic inflammatory response.<sup>13</sup> Accordingly, leptin and TNF- $\alpha$  serum levels are significantly higher in the patients experiencing exacerbation than in stable COPD patients and controls.<sup>14</sup> However, a number of studies have addressed the presence of leptin and its receptor in the lung.<sup>15,16</sup> Leptin deficiency might be associated with increased susceptibility to infections<sup>17,18</sup> and an assessed role of leptin in bacterial pneumonia in mice<sup>19</sup> suggests a protective effect of this adipokine against infections. Leptin is detectable in induced sputum of COPD patients, and it is positively correlated with the inflammatory markers C-reactive protein and TNF- $\alpha$  in sputum, indicating that leptin is involved in the local inflammatory responses in COPD.<sup>20</sup> Furthermore, increased levels of leptin expression were observed in the submucosa of bronchial biopsies from COPD and it is inversely correlated with the apoptosis of inflammatory cells,<sup>15</sup> suggesting that leptin might regulate the inflammatory cell infiltration of the submucosa in COPD. Moreover, the effect of smoking cessation in the leptin/leptin receptor pathway is largely unexplored. Based on this, the aim of the present work is to explore whether plasma and induced sputum concentrations of leptin are related to inflammatory markers, such as TNF- $\alpha$  and sICAM-1 and neutrophilic airway inflammation in stable COPD patients current and former smokers.

## Materials and methods

### Patients

Twenty-seven stable COPD patients, matched for age and BMI as a marker of nutritional status, were enrolled. BMI

was expressed as kg/m<sup>2</sup>. To eliminate the effects of gender differences, all patients were male. Diagnosis of COPD was based on the combination of clinical history and functional data.<sup>1</sup>

All patients were in a stable condition, as defined by the absence, for at least 4 weeks, of clinical signs or symptoms of acute exacerbation. All subjects were under treatment with long-acting beta-adrenergic agonist (salmeterol 50  $\mu$ g twice daily).

Exclusion criteria were history of COPD with severe comorbidities (tumors, end-stage New York Heart Association III/IV heart failure classes, severe renal failure, liver diseases, dementia). All patients had a history of cigarette smoking, 20 having quit smoking for at least 2 years and 7 still smoking. Informed consent was obtained from the patients before enrolment into the study.

### Functional pulmonary evaluation

FEV<sub>1</sub>, FEV<sub>1</sub>/FVC, maximal inspiration pressure (MIP), maximal expiration pressure (MEP) and residual volume/total lung capacity (RV/TLC) were measured with standard body plethysmography (1805 Series Plethysmograph, MedGraphics). Data are expressed as percentage of predicted values. Arterial blood gas analysis was performed using standard methods (IL 1400 BG Electrolytes Analyser, Instrumentation Laboratory, Milan).

### Blood samples

Blood was collected in an EDTA tubes vacutainer (Becton-Dickinson) in fasting patients in the morning before sputum induction. Blood samples were centrifuged at 1000 g for 15 minutes and plasma was stored at -70°C until analysis.

### Cytokines assays

Leptin, sICAM-1, and TNF- $\alpha$  were measured in plasma and induced sputum supernatant by commercially available specific enzyme immunoassay kits ELISA (R&D Systems, Minneapolis, MN) according to the manufacturer instructions. Lower detection limits were 7.8 pg/mL, 0.35 ng/mL, and 0.12 pg/mL respectively. Plasma leptin and sICAM-1 are expressed as ng/mL and TNF- $\alpha$  as pg/mL. In induced sputum, leptin and TNF- $\alpha$  are expressed as pg/g of sputum and sICAM-1 as ng/g of sputum.

### Sputum induction and processing

Sputum was induced by inhalation of 3% sterile hypertonic saline by a De Vilbiss Ultraneb 99 ultrasonic nebulizer (Healthcare Inc, Somerset, PA) through a mouthpiece without

using valves or nose clips, as previously described.<sup>21,22</sup> Sputum was processed according to the methods of the plugs.<sup>23</sup> Briefly, the selected plugs were diluted with 4 volumes of phosphate-buffered saline (PBS 1X; Gibco). The resulting suspension was vortexed for 30 seconds and then centrifuged at 1000 g for 20 minutes. The supernatant was collected and stored at  $-70^{\circ}\text{C}$  until analysis. The pellet was resuspended in 4 volumes of fresh 0.1% dithiothreitol (DTT) (Sigma-Aldrich, St Louis, MO) in PBS and processed as previously described.<sup>24</sup>

Cytospins were prepared on aptex (3-aminopropyltriethoxysilane) -coated slides by adding 100  $\mu\text{L}$  of cell suspension (about  $5 \times 10^5$  cells/mL) into a Shandon II cytocentrifuge at 180 g for 5 minutes. Differential cell counts were performed by May-Gruenwald-Giemsa staining. In all cases 400 nonsquamous cells were counted by 2 blind observers and results were expressed as percentage of total nonsquamous cells. Air-dried slides for immunocytochemistry were fixed in periodate-lysine-paraformal for 30 minutes and in 15% sucrose in Dulbecco's phosphate-buffered saline for 30 minutes<sup>25,26</sup> and stored at  $-70^{\circ}\text{C}$  until immunocytochemical staining.

### Immunocytochemical staining

Slides were incubated with a rabbit polyclonal antibody Ob anti-leptin (A-20, 1:20 dilution in antibody diluent, 1 hour at room temperature), and with a goat-polyclonal antibody Ob-R antileptin receptor against the common part of the short and long isoforms (M-18, 1:15 dilution in antibody diluent, overnight,  $4^{\circ}\text{C}$ ).<sup>27</sup> Both antibodies were from Santa Cruz Biotechnology, CA. The reaction was revealed by LSAB KIT phosphatase method according to the manufacturer's instructions. Both antibody diluent reagent and LSAB KIT were from DAKO Glostrup Denmark. Control slides for leptin were prepared as described: the immunocomplex was obtained by immunoprecipitation (A/G plus-agarose; Santa Cruz Biotechnology), and by incubation with the rabbit-polyclonal antibody Ob (2  $\mu\text{g}/\text{mL}$ ) and human recombinant leptin (20  $\mu\text{g}/\text{mL}$ ) (Sigma-Aldrich) overnight at  $4^{\circ}\text{C}$ . Control slides for leptin receptor were prepared by using an irrelevant mouse antibody of the same isotype and at the same concentration of the specific primary mAb (Dako). The cell nuclei were stained for 1 minute with hematoxylin (Dako). Slides were evaluated using a Leica (Wetzlar, Germany) microscope at  $400 \times$  magnification. Cell identification was based on cell morphology under light microscopy ( $400 \times$  final magnification), carefully referring to the cell type distribution in corresponding Diff-Quik-stained slides; red staining identified positive cells. Two independent observers counted a minimum of 600 cells, and the mean value of the 2 observations was used

( $r=0.91$ ). The results were expressed as positively staining cells as a percentage of the total cell number.

### Statistical analysis

Medians and 25% to 75% percentiles of measured parameters were calculated to perform descriptive analysis of population. A nonparametric Mann-Whitney test was applied to test the differences between the two groups of subjects. Correlations were determined using a Spearman rank correlation. Values of  $P < 0.05$  were considered statistically significant.

## Results

### Demographic characteristics of the patients

Demographic characteristics of the patients are reported in Table 1. Smoker and former smoker COPD patients were classified as stable GOLD II. No statistical differences were detected between smokers and former smokers for pulmonary functional parameters and BMI and body weight.

### Cytokines concentrations and correlations in plasma and sputum

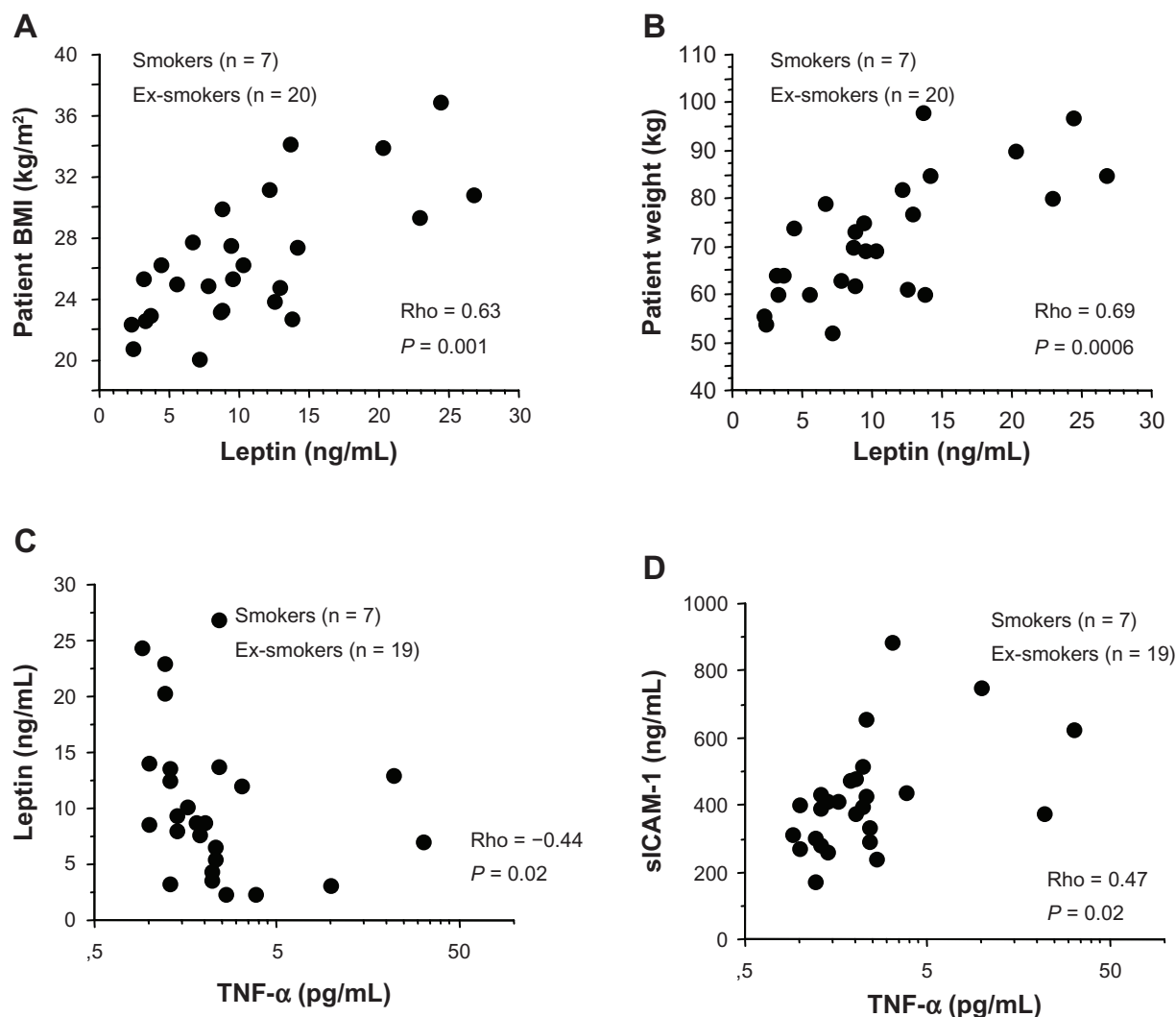
A positive correlation was found between plasma leptin levels and BMI ( $\text{Rho} = 0.63$ ;  $P = 0.001$ ) (Figure 1A) and between plasma leptin levels and patient weight ( $\text{Rho} = 0.69$ ;  $P = 0.0006$ ) (Figure 1B), whereas plasma leptin levels were inversely correlated with plasma  $\text{TNF-}\alpha$  levels ( $\text{Rho} = -0.44$ ,  $P = 0.02$ ) (Figure 1C). Plasma  $\text{TNF-}\alpha$  levels were positively correlated with plasma sICAM-1 levels ( $\text{Rho} = 0.47$ ,  $P = 0.02$ ) (Figure 1D). No correlation was found between plasma leptin

**Table 1** Demographic, functional and nutritional characteristics of the COPD patients

	Smokers, n = 7	Ex-smokers, n = 20	P
Age	61 (60.2–70)	73 (68–77)	ns
FEV <sub>1</sub> (%)	44 (30–77.7)	58.5 (41.5–69.5)	ns
FEV <sub>1</sub> /FVC	45 (41.5–60)	58 (49–68.5)	ns
pO <sub>2</sub> (mmHg)	66 (57.5–78.5)	77.5 (70–80)	ns
pCO <sub>2</sub> (mmHg)	38.8 (37–43.7)	40 (38–44)	ns
MIP	62 (41–93)	64 (49–85)	ns
MEP	58.5 (28.5–71)	54 (42.7–66.2)	ns
RV/TLC	58 (47.7–64.7)	55 (50–58)	ns
Weight (kg)	70 (63.2–74.7)	69 (60.5–81)	ns
BMI (kg/m <sup>2</sup> )	24.9 (22.9–27.1)	25.3 (23.5–29.6)	ns
Pack-year	46 (39.2–90.7)	49 (24–84.5)	ns

**Notes:** Results are expressed as median and 25%–75% percentiles; statistical significance between the two groups was detected by a nonparametric Mann-Whitney test.

**Abbreviations:** BMI, body mass index; FEV<sub>1</sub>, forced expiratory volume in 1 second; FVC, forced vitality capacity; MIP, maximal inspiration pressure; MEP, maximal expiration pressure; pCO<sub>2</sub>, partial pressure of carbon dioxide; pO<sub>2</sub>, partial pressure of oxygen; RV/TLC, residual volume/total lung capacity.



**Figure 1** In COPD patients plasma leptin levels were positively correlated with body mass index (A) and patient weight (B); plasma TNF- $\alpha$  levels were inversely correlated with plasma leptin levels (C) and positively correlated with plasma sICAM-1 levels (D). Correlations were determined using a Spearman rank correlation.  $P < 0.05$  was statistically significant.

and sICAM-1 levels (data not shown). A significant positive correlation was present between sputum leptin levels and FEV<sub>1</sub>/FVC ( $Rho = 0.39$ ,  $P = 0.04$ ) (Figure 2A) in all COPD patients. Significantly increased concentrations of leptin were present in sputum of former smokers compared with current smokers (Table 2). Additionally, we observed a nonsignificant trend toward increased concentrations of TNF- $\alpha$  in sputum of former smokers in comparison with current smokers (Table 2). Furthermore, no statistically significant differences were found between the two groups of COPD patients for leptin, TNF- $\alpha$ , and sICAM-1 in plasma (Table 2).

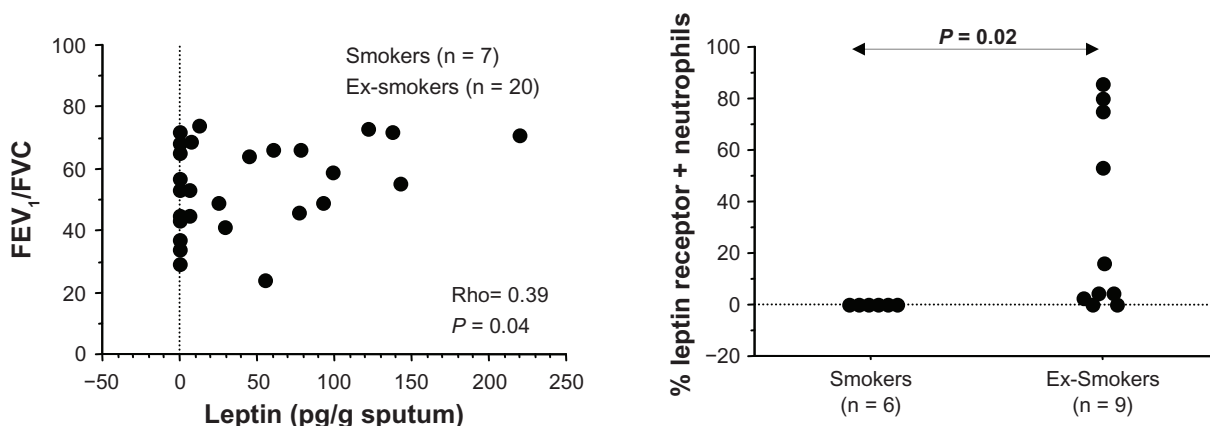
### Total and differential cell counts in sputum

Total and differential cell counts of induced sputum cells were performed in all COPD patients, both smokers and

former smokers. No statistical significant differences were found between smokers and former smokers in either of these cell counts (Table 3).

### Leptin and leptin receptor expression by induced sputum cells

The expression of leptin and its receptor was evaluated in sputum cells from both smoker and former smoker COPD patients. The expression of leptin receptor was significantly increased in neutrophils of former smokers compared with current smokers (Figure 2A; Figure 3), but no difference was observed for leptin. No differences were detected for both leptin and leptin receptor expression between the two COPD groups in macrophages, lymphocytes, and eosinophils (Table 3). Additionally in former smokers, leptin and leptin receptor were positively correlated ( $Rho = 0.74$ ,  $P = 0.02$ ) (Figure 4).



**Figure 2** In COPD patients sputum leptin levels were positively correlated with forced expiratory volume in 1 second/forced vitality capacity (FEV<sub>1</sub>/FVC) ratio. Correlation was determined using a Spearman rank correlation.  $P < 0.05$  was statistically significant. (A) The expression of leptin receptor was significantly higher in sputum neutrophils from former smokers than current smoker patients. The percentage of positive cells was normalized for the total cell counts. A nonparametric Mann–Whitney test was applied and differences were considered significant at  $P < 0.05$  (B).

## Discussion

COPD is a pulmonary disease recognized to have important systemic and airway inflammatory effects.<sup>28</sup> The present study underlines that leptin is involved in local and systemic inflammation of smoker and former smoker COPD patients, matched for age, gender, pulmonary function, and BMI and body weight. Additionally, taking into account the crucial role of neutrophils in this inflammatory disease, the study suggests that the leptin/leptin receptor pathway may contribute to increase the host defense by neutrophils in COPD patients after smoking cessation, driving the neutrophil function. Therefore, because of this study's small sample size we recommend an explorative study.

Leptin is proinflammatory adipokine involved in different inflammatory diseases such as rheumatoid arthritis.<sup>29</sup> It is produced mainly by fat tissue and is always correlated with BMI and TNF- $\alpha$  and is also higher in obese individuals. Accordingly, this study and previous studies show that stable COPD patients have a positive correlation between plasma lep-

tin levels and patient BMI<sup>30,31</sup> as well as with plasma sICAM-1 and plasma TNF- $\alpha$ .<sup>12</sup> In addition, we show that plasma leptin levels are positively correlated with body weight, but inversely correlated with plasma TNF- $\alpha$  levels. We did not identify a positive correlation between plasma leptin and TNF- $\alpha$  levels, or between leptin and sICAM-1 levels in stable COPD, in accord with previous studies showing that serum leptin and serum TNF- $\alpha$  levels are significantly higher in patients experiencing exacerbation than in stable patients and controls.<sup>20</sup>

**Table 3** Total and differential cell counts in sputum and immunocytochemistry

	Smokers n = 7	Ex-smokers n = 20	P
<b>Total cell counts (mL/g sputum)</b>	3.1 (1.85–14.14)	9.7 (5.08–22.37)	ns
<b>Differential cell counts (%)</b>			
Neutrophils	82 (55.1–84.1)	78 (59.8–90.3)	ns
Macrophages	12.4 (6.7–33.8)	9.8 (5–34)	ns
Lymphocytes	2.1 (2–5.1)	1.4 (0.9–2.3)	ns
Eosinophils	3.3 (0.5–4.2)	0.8 (0–3.3)	ns
<b>Leptin expression (% positive cells)</b>	<b>n = 6</b>	<b>n = 10</b>	
Neutrophils	13.2 (0–33.3)	16.2 (12.5–62.8)	ns
Macrophages	62.7 (28.6–69.6)	47.2 (8.1–80.4)	ns
Lymphocytes	0 (0–0)	0 (0–0)	ns
Eosinophils	30.9 (0–90)	37.5 (0–100)	ns
<b>Leptin receptor expression (% positive cells)</b>			
Neutrophils	1 (0–10)	4.3 (0–75)	0.02
Macrophages	11.5 (0–28.6)	17.1 (0–75)	ns
Lymphocytes	0 (0–0)	0 (0–10)	ns
Eosinophils	29 (0–80)	33.3 (0–100)	ns

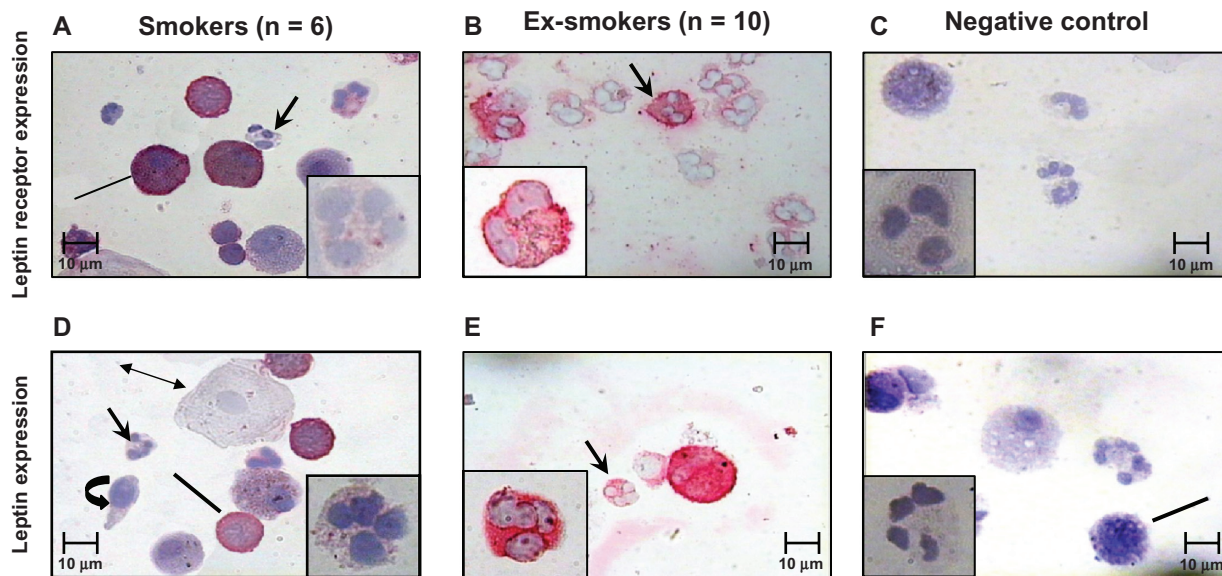
**Notes:** Results are expressed as median and 25%–75% percentiles; statistical significance between the two groups was detected by a nonparametric Mann–Whitney test.

**Table 2** Evaluation of cytokines in sputum and plasma

Plasma	Smokers, n = 7	Ex-smokers, n = 20	P
Leptin (ng/mL)	7.7 (3.8–9.2)	10.2 (6.7–13.6)	ns
TNF- $\alpha$ (pg/mL)	1.9 (1.1–2.2)	2 (1.3–2.5)	ns
sICAM-1 (ng/mL)	394 (280.5–466.2)	400 (309.9–466.6)	ns
<b>Sputum</b>			
Leptin (pg/g)	7.8 (7.8–9)	50.2 (0–95.7)	0.04
TNF- $\alpha$ (pg/g)	20.7 (5.8–36)	26.4 (9.3–86.9)	ns
sICAM-1 (ng/g)	45.1 (37–8.7)	64.3 (21.4–117.4)	ns

**Notes:** Results are expressed as median and 25%–75% percentiles; statistical significance between the two groups was detected by a nonparametric Mann–Whitney test.

**Abbreviations:** sICAM-1, soluble form of intercellular adhesion molecule-1; TNF, tumor necrosis factor.

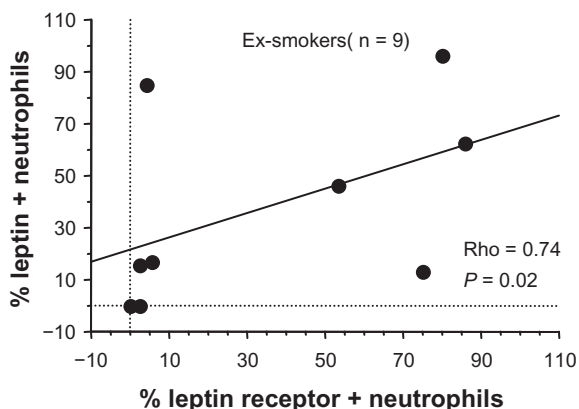


**Figure 3** Immunocytochemistry for leptin and its receptor expression in sputum cells: leptin receptor expression was significantly lower in sputum neutrophils from current smokers (**A**) than former smokers (**B**). Negative control for leptin receptor (**C**). Leptin expression was lower in sputum neutrophils from current smoker patients (**D**) than in former smoker patients (**E**). Negative control for leptin (**F**). Arrows indicate sputum neutrophils. Lines indicate sputum macrophages, double arrow squamous cells, circular arrow indicate bronchial epithelial cells.

Additionally, a previous study showed that leptin levels are lower and TNF- $\alpha$  levels are higher in stable patients than in patients experiencing exacerbation,<sup>14</sup> strongly supporting the negative correlation between plasma leptin and TNF- $\alpha$  levels identified in our patients. Furthermore, sICAM-1 and leptin concentrations are significantly higher in patients with higher levels of BMI<sup>31–33</sup> than in COPD patients enrolled in our study.

Clinical and functional FEV<sub>1</sub>/FVC ratio is considered the most important altered parameter of lung function in COPD patients. A previous study has already shown that respiratory pathogens isolated from the sputum are associ-

ated with severe airflow obstruction (FEV<sub>1</sub>/FVC < 60%).<sup>34</sup> We demonstrate here that sputum leptin levels were positively correlated with the FEV<sub>1</sub>/FVC values in COPD patients studied, hence it is possible to consider a possible relationship between leptin and the resolution of airway infection in COPD patients. However, since we selected patients in a stable condition, we observed only little correlation. COPD patients exhibit a chronic inflammatory response of the airways with a persistent inflammation characterized by an increased influx of neutrophils at the site of inflammation.<sup>3</sup> The role of neutrophils in COPD is very important because they play a pivotal role in the defense against infections and are critically involved in the innate defense mechanisms.<sup>34</sup> The infections are critical events that complicate COPD and lead to the progressive decrease of lung function.<sup>35</sup> Also, smoking attenuates the oxidative burst of inflammatory cells and 3 weeks of abstinence normalizes the oxidative burst.<sup>36</sup> These results suggest that smoking cessation improves the function and activity of inflammatory cells. We have demonstrated that sputum leptin and TNF- $\alpha$  levels are higher in sputum of former smoker than in current smoker COPD patients. We found these differences only in the airway leptin system of stable COPD patients due to a direct action of the cigarette smoke in the airways. To our knowledge, only one study has assessed the relationship between leptin and other cytokines in sputum of COPD patients, suggesting a specific role of this adipokine in the local inflammatory response in COPD<sup>20</sup>



**Figure 4** Leptin expression was positively correlated with its receptor in sputum neutrophils from former smoker COPD patients. The percentage of positive cells was normalized for the total count cells. Correlation was determined using a Spearman rank correlation.  $P < 0.05$  was statistically significant.

but not clarifying the specific role of cigarette smoke in these mechanisms. Our results strengthen the hypothesis that quitting smoking might increase the leptin action in host defense mechanism from respiratory pathogens mediated by sputum neutrophils. Indeed, we show here for the first time the expression of leptin together with its receptor in sputum neutrophils in COPD patients and that the expression of leptin and its receptor is higher in former smoker than in current smoker COPD subjects and that these parameters are positively correlated only in former smokers. In addition the increased levels of leptin in the induced sputum from former smokers together with higher levels of TNF- $\alpha$  might be associated with the capacity of TNF- $\alpha$  to increase the levels of leptin expression<sup>37,38</sup> or to the increased appetite after smoking cessation.<sup>39</sup> Neutrophils express the short form of leptin receptors<sup>7</sup> and despite lacking the STAT3 docking site, the short leptin receptor isoform is still able to bind and activate Jak2, which subsequently activates the MAPK pathway in leptin-stimulated neutrophils.<sup>40</sup> The MAPK pathway is important for cytoskeletal processes, such as those involved in the transfer of CD11b from cytoplasmic granules to the plasma membrane, and for the generation of reactive oxygen species.<sup>41,42</sup> Leptin is able to stimulate neutrophils by increasing CD11b expression indirectly via monocyte-derived TNF- $\alpha$ <sup>9</sup> and since a leptin-induced ICAM-1 expression was observed in eosinophils<sup>43</sup> one of the mechanisms by which leptin affects neutrophil activity might be associated with the induction of the expression of ICAM on neutrophils of COPD patients.

Additionally, it has been reported that reactive oxygen production is the consequence of a direct stimulation of neutrophils by leptin<sup>10</sup> and that exogenous leptin administration in vivo or in vitro could induce the phagocytic activity in leptin-deficient purified mouse neutrophils.<sup>17</sup> Together, this evidence suggests that leptin and its receptor are strongly involved in the activation of neutrophils, as supported by our results showing a positive correlation between leptin and its receptor in sputum neutrophils of former smokers. Indeed our patients, well matched for BMI and body weight, did not show differences in neutrophils in sputum cells from COPD and COPD former smokers, in contrast with previous results<sup>44</sup> obtained in a study population of COPD not matched for nutritional status. TNF- $\alpha$  is a proinflammatory cytokine with pleiotropic effects produced in the lung mainly by activated macrophages in response to inflammatory stimuli such as a chemoattractant for inflammatory cells.<sup>45,46</sup> TNF- $\alpha$  levels are higher in patients experiencing COPD exacerbation<sup>14</sup> and TNF- $\alpha$  receptors are significantly elevated in sputum from

ex-smoker compared with current smoker COPD patients.<sup>47</sup> We did not identify significant differences between TNF- $\alpha$  levels in sputum and plasma from COPD former smokers and smokers, although some of our patients reached higher levels of TNF- $\alpha$  due to the fact that our patients were in a stable condition.

Although our study has some limitations because of the small number of patients, it is the first study to analyze the expression of the leptin/leptin receptor pathway in sputum cells from COPD patients in relation to the smoking habit of the patients. However our results, in accord with those of a previous study,<sup>20,48</sup> underline the fact that the levels of leptin together with TNF- $\alpha$ , in the inflammatory context of COPD, are more involved in the local inflammatory response of the lung than in the systemic circulation. Finally, our findings underline the correlation between leptin sputum levels and FEV<sub>1</sub>/FVC ratio in COPD patients together with the increased leptin levels in patients who have quit smoking, supporting the concept of a protective role of leptin in COPD with a deleterious effect of cigarette smoke. Our observation is further supported by the fact that the expression of leptin is correlated positively with the expression of its receptor in sputum neutrophils from former smoker COPD patients, leading us to suppose that cigarette smoke might affect the leptin/leptin receptor-mediated neutrophil activation. All these data could explain a long-term follow-up improvement of the pulmonary function in COPD patients after smoking cessation mediated by leptin neutrophils activation.

Taken together these findings strongly suggest that leptin plays a role in the activation of neutrophils in the airways of COPD patients and that leptin is involved in the protection of the airways of these patients. This effect is likely exerted via the role played by neutrophils in innate immune mechanisms against infections and is counteracted by the persistence of cigarette smoke exposure. To better identify the role of leptin in sputum neutrophils from COPD former smokers further studies are needed to analyze COPD patients before and after smoking cessation.

## Disclosure

The authors declare no conflicts of interest in relation to this work.

## References

1. Pauwels RM, Buist AS, Calverley PMA, Jenkins CR, Hurd SS; GOLD Scientific Committee. Global strategy for the diagnosis, management, and prevention of chronic obstructive pulmonary disease. NHLBI/WHO Global initiative for Chronic Obstructive Lung Disease (GOLD). Workshop summary 2001. *Am J Respir Crit Care Med.* 2001;163:1256-1276.

2. Garcia-Aymerich J, Lange P, Benet M, Schnohr P, Antó JM. Regular physical activity modifies smoking-related lung function decline and reduces risk of chronic obstructive pulmonary disease: a population-based cohort study. *Am J Respir Crit Care Med.* 2007;175:458–463.
3. Celli BR, MacNee W. ATS/ERS Task Force. Standards for the diagnosis and treatment of patients with COPD: a summary of the ATS/ERS position paper. *Eur Respir J.* 2004;23:932–946.
4. Allegra L, Blasi F, Diano P, et al. Sputum color as a marker of acute bacterial exacerbations of chronic obstructive pulmonary disease. *Respir Med.* 2005;99:742–747.
5. Fantuzzi G, Faggioni R. Leptin in the regulation of immunity, inflammation, and haematopoiesis. *J Leukoc Biol.* 2000;68:437–446.
6. Russo VC, Metaxas S, Kobayashi K, Harris M, Werther GA. Antiapoptotic effects of leptin in human neuroblastoma cells. *Endocrinology.* 2004;145:4103–4112.
7. Bruno A, Conus S, Schimid I, Simon HU. Apoptotic pathways are inhibited by leptin receptor activation in neutrophils. *J Immunol.* 2005;174:8090–8096.
8. Conus S, Bruno A, Simon HU. Leptin is an eosinophil survival factor. *J Allergy Clin Immunol.* 2005;116:1228–1234.
9. Zarkesh-Esfahani H, Pockley AG, Wu Z, Hellewell PG, Weetman AP, Ross RJ. Leptin indirectly activates human neutrophils via induction of TNF- $\alpha$ . *J Immunol.* 2004;172:1809–1814.
10. Caldefie-Chezet F, Poulin A, Tridon A, Sion B, Vasson MP. Leptin: a potential regulator of polymorphonuclear neutrophil bactericidal action? *J Leukoc Biol.* 2001;69:414–418.
11. Aldonyte R, Eriksson S, Piitulainen E, Wallmark A, Janciauskiene S. Analysis of systemic biomarkers in COPD patients. *COPD.* 2004;1:155–164.
12. Straczkowski M, Lewczuk P, Dzieńs-Straczkowska S, Kowalska I, Stepień A, Kinalska I. Elevated soluble intercellular adhesion molecule-1 levels in obesity: relationship to insulin resistance and tumor necrosis factor- $\alpha$  system activity. *Metabolism.* 2002;51:75–78.
13. Creutzberg EC, Wouters EF, Vanderhoven-Augustin IM, Dentener MA, Schols AM. Disturbances in leptin metabolism are related to energy imbalance during acute exacerbations of chronic obstructive pulmonary disease. *Am J Respir Crit Care Med.* 2000;162:1239–1245.
14. Calikoglu M, Sahin G, Unlu A, et al. Leptin and TNF- $\alpha$  levels in patients with chronic obstructive pulmonary disease and their relationship to nutritional parameters. *Respiration.* 2004;71:45–50.
15. Bruno A, Chanez P, Chiappara G, et al. Does leptin play a cytokine-like role within the airways of COPD patients? *Eur Respir J.* 2005;26:398–405.
16. Tsuchiya T, Shimizu H, Horie T, Mori M. Expression of leptin receptor in lung: leptin as a growth factor. *Eur J Pharmacol.* 1999;365:273–279.
17. Faggioni R, Moser A, Feingold KR, Grunfeld C. Reduced leptin levels in starvation increase susceptibility to endotoxic shock. *Am J Pathol.* 2000;156:1781–1787.
18. Moore SI, Huffnagle GB, Chen GH, White ES, Mancuso P. Leptin modulates neutrophil phagocytosis of *Klebsiella pneumoniae*. *Infect Immun.* 2003;71:4182–4185.
19. Mancuso P, Huffnagle GB, Olszewski MA, Phipps J, Peters-Golden M. Leptin corrects host defense defects after acute starvation in murine pneumococcal pneumonia. *Am J Respir Crit Care Med.* 2006;173:212–218.
20. Broekhuizen R, Vernooij JH, Schols AM, Dentener MA, Wouters EF. Leptin as local inflammatory marker in COPD. *Respir Med.* 2005;99:70–74.
21. Gibson PG, Simpson JL, Saltos N. Heterogeneity of airway inflammation in persistent asthma: evidence of neutrophilic inflammation and increased sputum interleukin-8. *Chest.* 2001;119:1329–1336.
22. Jatakanon A, Uasuf C, Maziak W, Lim S, Chung KF, Barnes PJ. Neutrophilic inflammation in severe persistent asthma. *Am J Respir Crit Care Med.* 1999;160:1532–1539.
23. Koller DY, Neithing I, Otto J, Urbanek R, Eichler I. Cytokine concentrations in sputum from patients with cystic fibrosis and their relation to eosinophil activity. *Am J Respir Crit Care Med.* 1997;155:1050–1054.
24. Osika E, Caillaillon JM, Chadelat K, Boule M, Fitting C, Tournier G, et al. Distinct sputum cytokine profiles in cystic fibrosis and other chronic inflammatory airway disease. *Eur Respir J.* 1999;14:339–346.
25. Profita M, Sala A, Bonanno A, et al. Increased prostaglandin E2 concentrations and cyclooxygenase-2 expression in asthmatic subjects with sputum eosinophilia. *J Allergy Clin Immunol.* 2003;112:709–716.
26. Girgis-Gabardo A, Kanai N, Denburg JA, Hargreave FE, Jordana M, Dolovich J. Immunocytochemical detection of granulocyte-macrophage colony-stimulating factor and eosinophil cationic protein in sputum cells. *J Allergy Clin Immunol.* 1994;93:945–947.
27. De Matteis R, Dashtipour K, Ognibene A, Cinti S. Localization of leptin receptor splice variants in mouse peripheral tissues by immunohistochemistry. *Proc Nutr Soc.* 1998;57:441–448.
28. Sin DD, Man SF. Systemic inflammation and mortality in chronic obstructive pulmonary disease. *Can J Physiol Pharmacol.* 2007;85:141–147.
29. Targońska-Stepniak B, Dryglewska M, Majdan M. Adiponectin and leptin serum concentrations in patients with rheumatoid arthritis. *Rheumatol Int.* 2010;30:731–737.
30. Ram E, Vishne T, Maayan R, et al. The relationship between BMI, plasma leptin, insulin and proinsulin before and after laparoscopic adjustable gastric banding. *Obes Surg.* 2005;15:1456–1462.
31. Prolo P, Wong ML, Licinio J. Leptin. *Int J Biochem Cell Biol.* 1998;30:1285–1290.
32. Valle Jiménez M, Estepa RM, Camacho RM, Estrada RC, Luna FG, Guitarte FB. Endothelial dysfunction is related to insulin resistance and inflammatory biomarker levels in obese prepubertal children. *Eur J Endocrinol.* 2007;156:497–502.
33. Ito H, Ohsima A, Inoue M, et al. Weight reduction decreases soluble cellular adhesion molecules in obese women. *Clin Exp Pharmacol Physiol.* 2002;29:399–404.
34. Ho PL, Chan KN, Ip MS, et al. The effect of *Pseudomonas aeruginosa* infection on clinical parameters in steady-state bronchiectasis. *Chest.* 1998;114:1594–1598.
35. Propst-Graham KL, Preheim LC, Vander Top EA, Snitily MU, Gentry-Nielsen MJ. Cirrhosis-induced defects in innate pulmonary defenses against *Streptococcus pneumoniae*. *BMC Microbiol.* 2007;7:94.
36. Mannino DM, Buist AS. Global burden of COPD: risk factors, prevalence, and future trends. *Lancet.* 2007;370:765–773.
37. Brian N, Finck BN, Kelley KW, Dantzer R, Johnson RW. In vivo and in vitro evidence for the involvement of tumor necrosis factor- $\alpha$  in the induction of leptin by lipopolysaccharide. *Endocrinology.* 1998;139:2278–2283.
38. Brian N, Finck BN, Johnson RW. Tumor necrosis factor- $\alpha$  regulates secretion of the adipocyte-derived cytokine, leptin. *Microsc Res Tech.* 2000;50:209–215.
39. Chen H, Hansen MJ, Jones JE, Vlahos R, Anderson GP, Morris MJ. Long-term cigarette smoke exposure increases uncoupling protein expression but reduces energy intake. *Brain Res.* 2008;1228:81–88.
40. Sørensen LT, Nielsen HB, Kharazmi A, Gottrup F. Effect of smoking and abstinence on oxidative burst and reactivity of neutrophils and monocytes. *Surgery.* 2004;136:1047–1053.
41. Bjorbaek C, Uotani S, da Silva B, Flier JS. Divergent signaling capacities of the long and short isoforms of the leptin receptor. *J Biol Chem.* 1997;272:32686–32695.
42. Wu WS. The signaling mechanism of ROS in tumor progression. *Cancer Metastasis Rev.* 2006;25:695–705.
43. Wong CK, Cheung PF, Lam CW. Leptin-mediated cytokine release and migration of eosinophils: implications for immunopathophysiology of allergic inflammation. *Eur J Immunol.* 2007;37:2337–2348.
44. Profita M, Sala A, Bonanno A, et al. Chronic obstructive pulmonary disease and neutrophil infiltration: role of cigarette smoke and cyclooxygenase products. *Am J Physiol Lung Cell Mol Physiol.* 2010;298:L261–L269.



45. Alvarez ME, Bass JI, Geffner JR, et al. Neutrophil signaling pathways activated by bacterial DNA stimulation. *J Immunol.* 2006;177:4037–4046.
46. Keatings VM, Collins PD, Scott DM, Barnes PJ. Differences in interleukin-8 and tumor necrosis factor-alpha in induced sputum from patients with chronic obstructive pulmonary disease or asthma. *Am J Respir Crit Care Med.* 1996;153:530–534.
47. Churg A, Dai J, Tai H, Xie C, Wright JL. Tumor necrosis factor-alpha is central to acute cigarette smoke-induced inflammation and connective tissue breakdown. *Am J Respir Crit Care Med.* 2002;166:849–854.
48. Vernooy JH, Kucukaycan M, Jacobs JA, et al. Local and systemic inflammation in patients with chronic obstructive pulmonary disease: soluble tumor necrosis factor receptors are increased in sputum. *Am J Respir Crit Care Med.* 2002;166:1218–1224.

### Journal of Inflammation Research

## Publish your work in this journal

The Journal of Inflammation Research is an international, peer-reviewed open-access journal that welcomes laboratory and clinical findings on the molecular basis, cell biology and pharmacology of inflammation including original research, reviews, symposium reports, hypothesis formation and commentaries on: acute/chronic inflammation; mediators of inflamma-

tion; cellular processes; molecular mechanisms; pharmacology and novel anti-inflammatory drugs; clinical conditions involving inflammation. The manuscript management system is completely online and includes a very quick and fair peer-review system. Visit <http://www.dovepress.com/testimonials.php> to read real quotes from published authors.

Submit your manuscript here: <http://www.dovepress.com/journal-of-inflammation-research-journal>

Dovepress