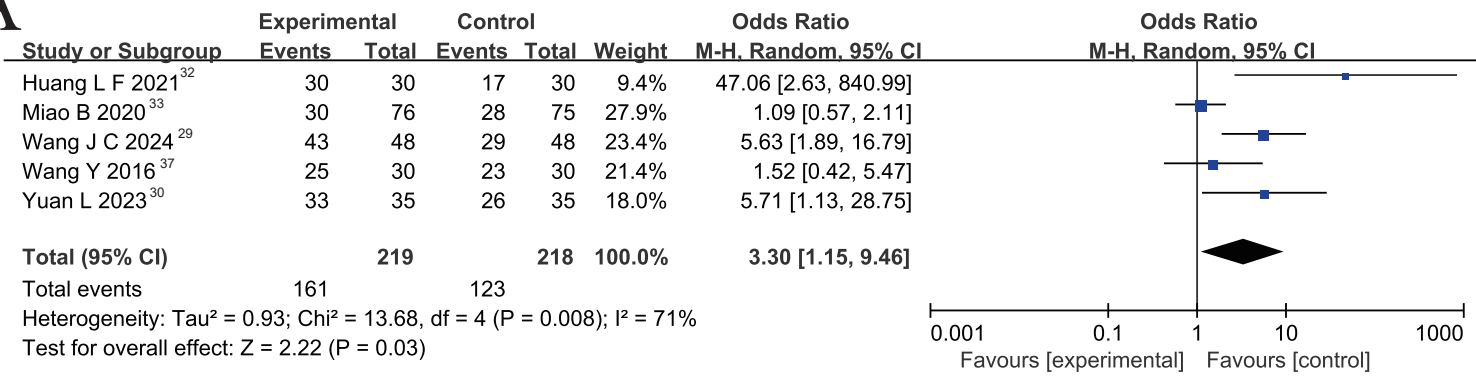
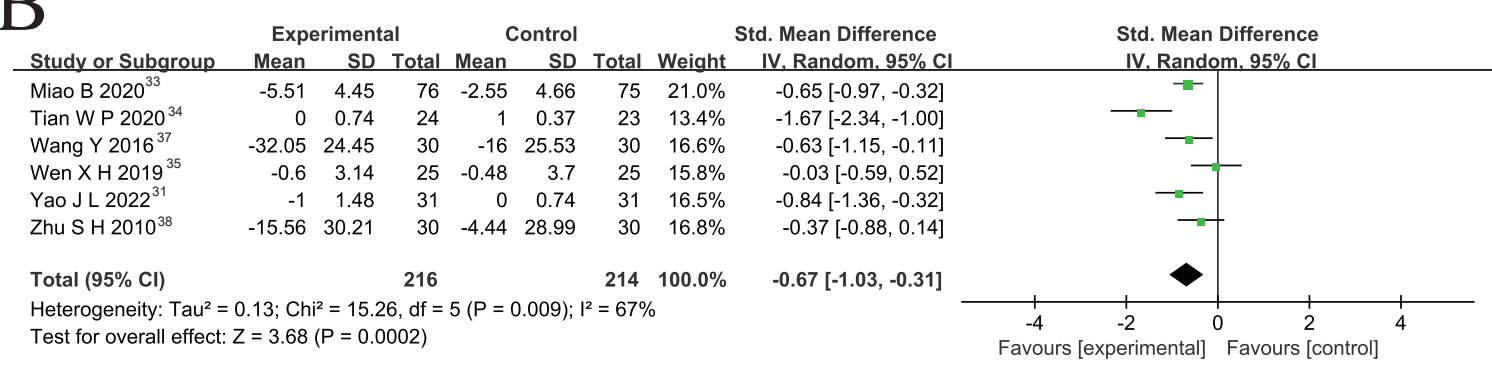
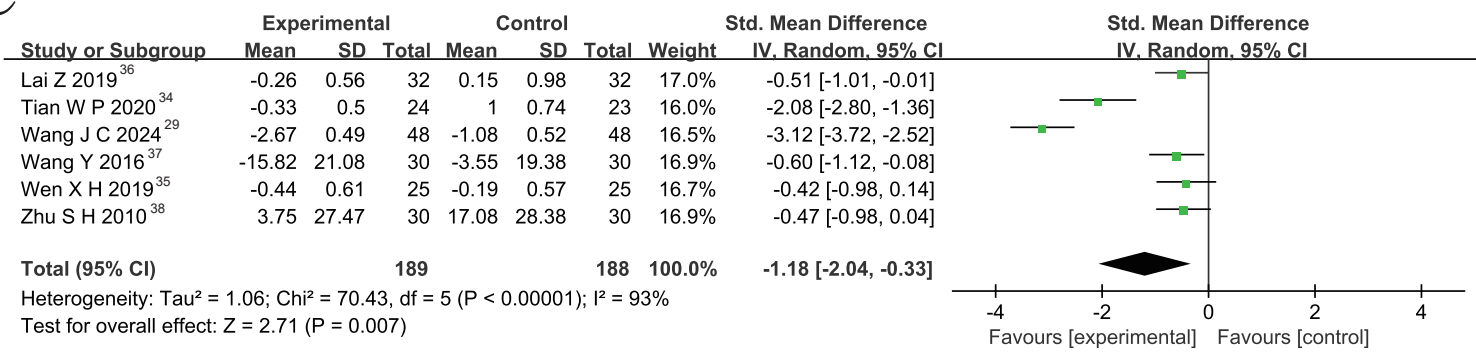
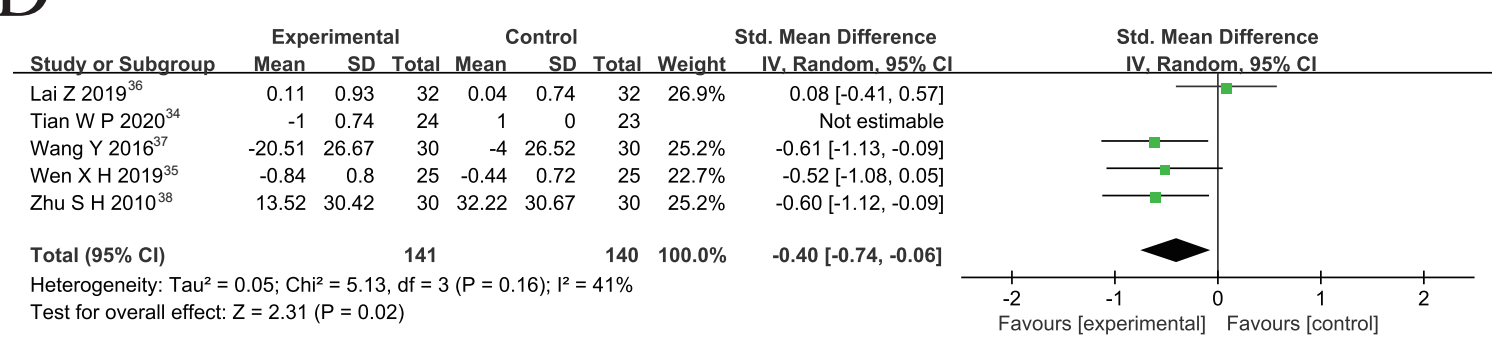
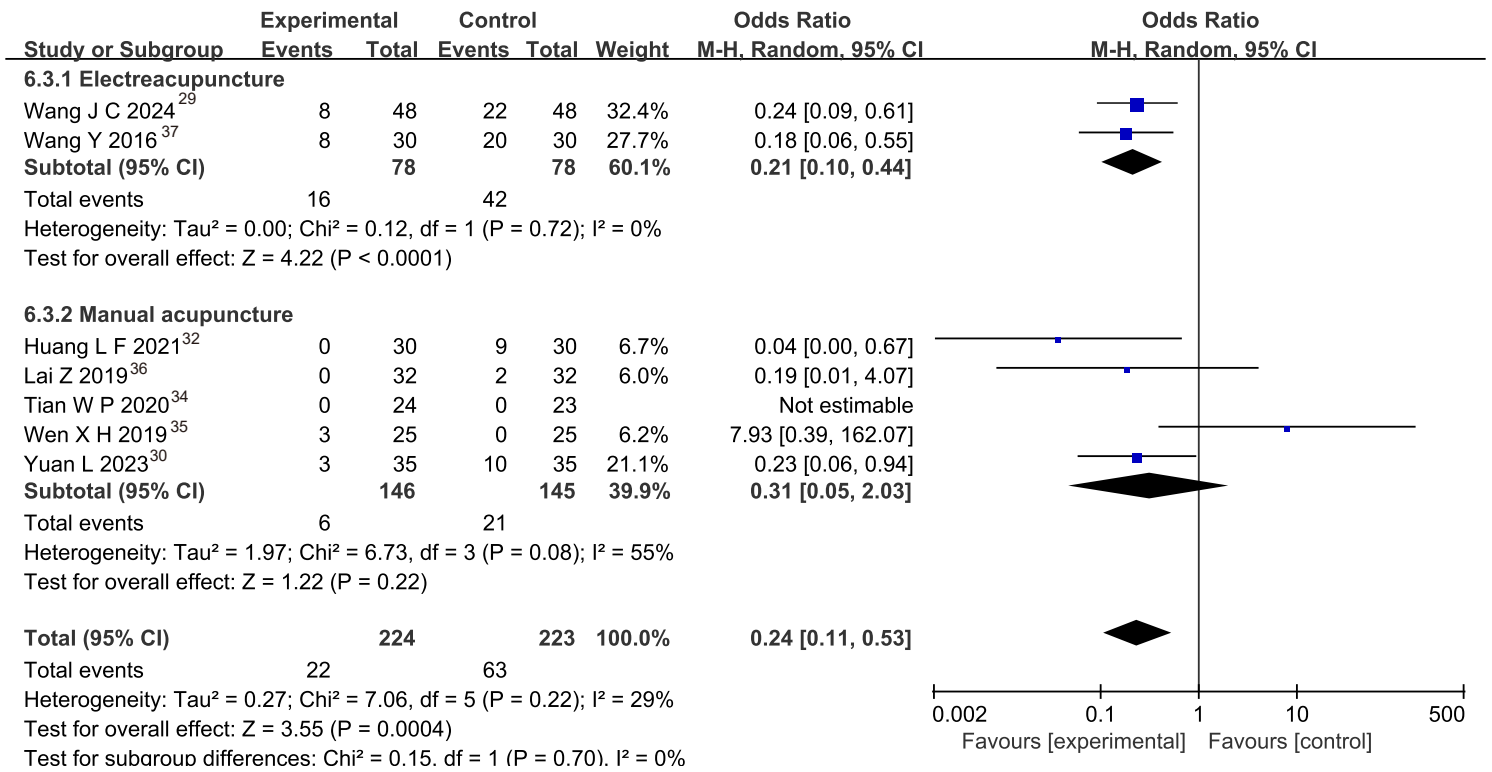


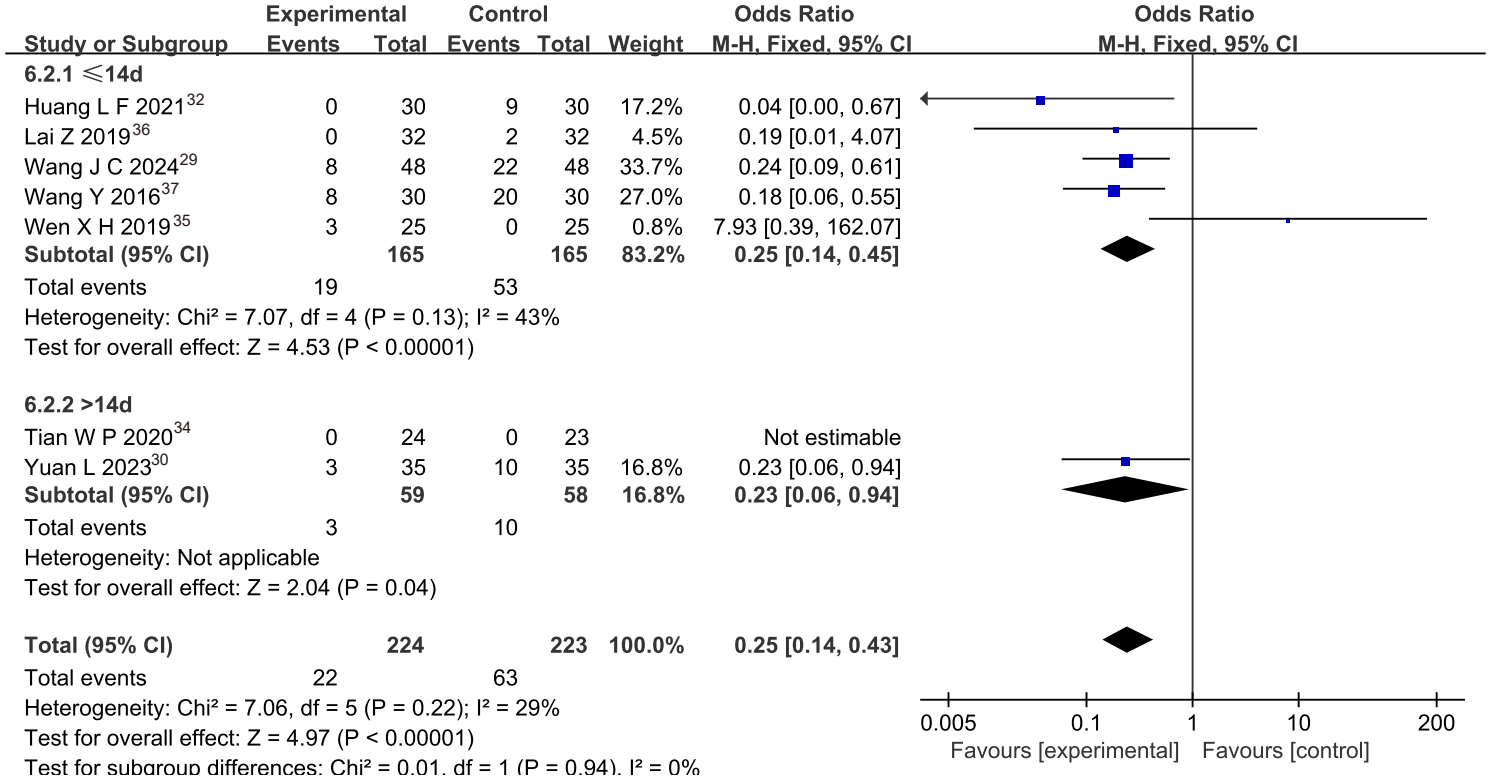
A**B****C****D**

Supplementary Figure 1. Forest plots of meta-analysis. (A) Results of total effective rate. (B) Results of degree of insomnia. (C) Results of fatigue degree. (D) Results of anorexia score.

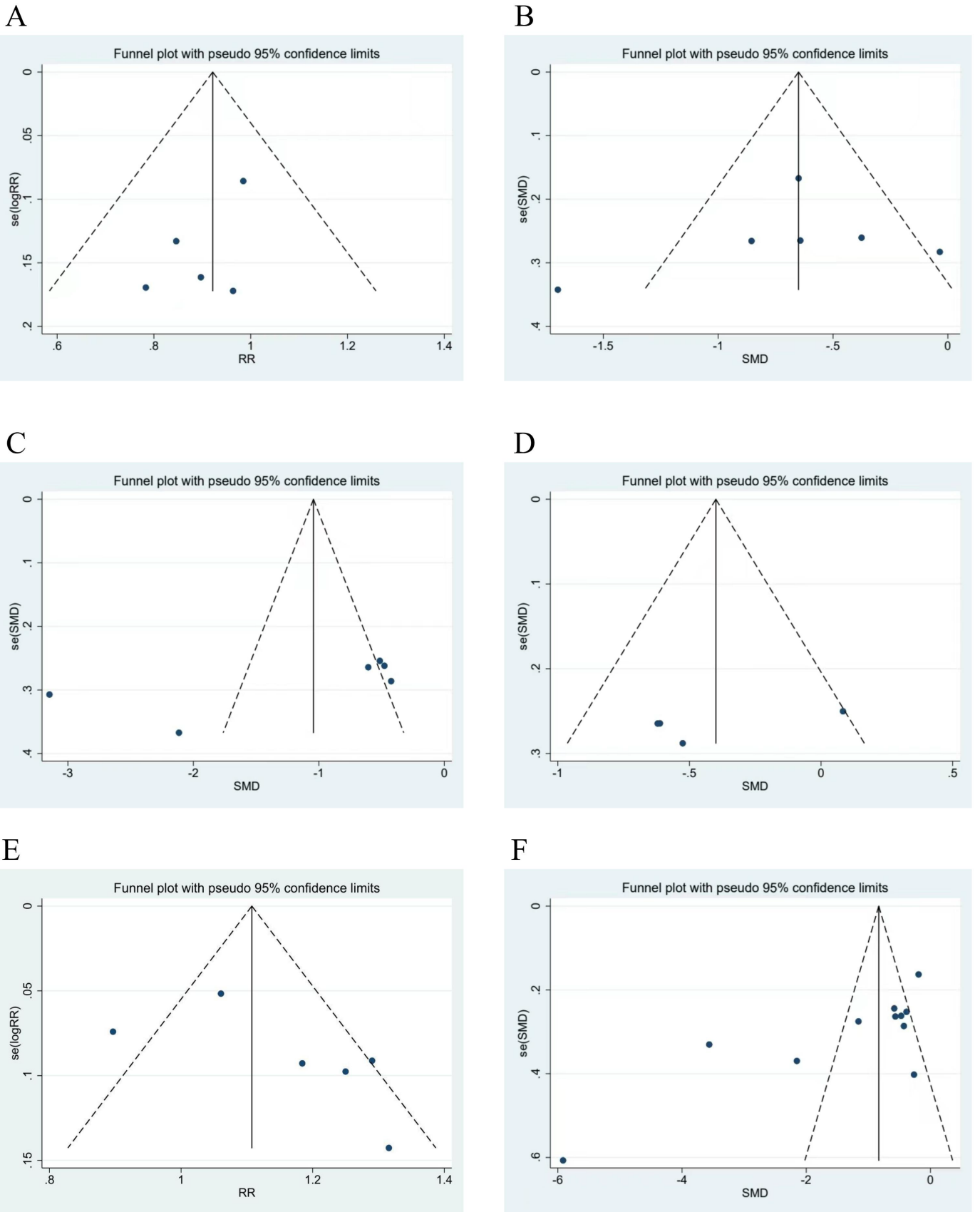
A



B



Supplementary Figure 2. Subgroup of adverse events. (A) The type of acupuncture. (B) The treatment duration.



Supplementary Figure 3. Funnel plot of meta-analysis. (A) Results of total effective rate. (B) Results of degree of insomnia. (C) Results of fatigue degree. (D) Results of anorexia score. (E) Results of adverse events. (F) Results of pain intensity.

Supplementary Table 1. Search strategy of eight databases.

Database list	Search strategy
PubMed	<p>(Carcinoma, Non-Small-Cell Lung OR Carcinoma, Non Small Cell Lung OR Carcinomas, Non-Small-Cell Lung OR Lung Carcinoma, Non-Small-Cell OR Lung Carcinomas, Non-Small-Cell OR Non-Small-Cell Lung Carcinomas OR Carcinoma, Non-Small Cell Lung OR Non-Small Cell Lung Cancer OR Non-Small-Cell Lung Carcinoma OR Non Small Cell Lung Carcinoma OR Nonsmall Cell Lung Cancer OR Non-Small Cell Lung Carcinoma) AND pain AND (Acupuncture[Mesh] OR Pharmacopuncture OR Acupuncture therapy OR Electric needle OR Warm needle OR Puncture OR Fire needle OR Acupuncture OR Acupuncture* OR Body acupuncture OR Scalp acupuncture OR manual acupuncture OR Auricular acupuncture OR ear acupuncture OR electroacupuncture OR dermal needle OR plum blossom needle OR Pyonex OR Abdominal acupuncture)</p>
EMbase	<p>(non small cell lung cancer'/exp OR 'bronchial non small cell cancer' OR 'bronchial non small cell carcinoma' OR 'carcinoma, non-small-cell lung' OR 'lung cancer, non small cell' OR 'lung non small cell cancer' OR 'lung non small cell carcinoma' OR 'non oat cell lung cancer' OR 'non small cell bronchial cancer' OR 'non small cell cancer, lung' OR 'non small cell lung cancer' OR 'non small cell lung carcinoma' OR 'non small cell pulmonary cancer' OR 'non small cell pulmonary carcinoma' OR 'non squamous nsclc' OR 'non-oat cell lung cancer' OR 'non-small-cell lung carcinoma' OR 'nonsmall cell carcinoma of the lung' OR 'nonsmall cell lung cancer' OR 'nonsmall cell lung carcinoma' OR 'pulmonary non small cell cancer' OR 'pulmonary non small cell carcinoma') AND ('pain'/exp OR pain) AND ('pharmacopuncture'/exp OR pharmacopuncture OR 'herb acupuncture' OR 'herbal acupuncture' OR 'herbalized acupuncture' OR 'pharmaco-acupuncture' OR 'pharmaco-puncture' OR 'pharmacoacupuncture' OR 'pharmacopuncture' OR 'acupuncture'/exp OR acupuncture OR 'acupuncture' OR 'acupuncture therapy' OR 'shonishin' OR 'electric needle' OR 'puncture'/exp OR puncture OR 'punction' OR 'puncture' OR 'punctures' OR 'warm acupuncture'/exp OR 'burnt needle therapy' OR 'fire acupuncture' OR 'fire needle acupuncture' OR 'fire needle therapy' OR 'fire needling' OR 'heat acupuncture' OR 'heat-type acupuncture' OR 'thermal acupuncture' OR 'thermo-acupuncture' OR 'thermoacupuncture' OR 'warm acupuncture' OR 'warm needle acupuncture' OR 'body acupuncture'/exp OR 'body acupuncture' OR 'scalp acupuncture'/exp OR 'scalp acupuncture' OR 'manual acupuncture' OR 'auricular acupuncture'/exp OR 'acupuncture, ear' OR 'acupuncture, earlobe' OR 'auricular acupuncture' OR 'auriculo-acupuncture' OR 'auriculoacupuncture' OR 'auriculotherapy' OR 'ear acupuncture' OR 'earlobe acupuncture' OR electroacupuncture OR 'dermal needle' OR 'plum blossom needle'/exp OR 'plum blossom needle' OR pyonex OR 'abdominal acupuncture'/exp OR 'abdominal acupuncture')</p>
Cochrane	<p>"Carcinoma, Non-Small-Cell Lung" OR "Carcinoma, Non Small Cell Lung" OR "Carcinomas, Non-Small-Cell Lung" OR "Lung Carcinoma, Non-Small-Cell" OR "Lung Carcinomas, Non-Small-Cell" OR "Non-Small-Cell Lung Carcinomas" OR "Carcinoma, Non-Small Cell Lung" OR "Non-Small Cell Lung Cancer" OR "Non-Small-Cell Lung Carcinoma" OR "Non Small Cell Lung Carcinoma" OR "Nonsmall Cell Lung Cancer" OR "Non-Small Cell Lung Carcinoma" in Title Abstract Keyword AND pain in Title Abstract Keyword AND "Acupuncture" OR "Pharmacopuncture" OR "Acupuncture therapy" OR "Electric needle" OR "Warm needle" OR</p>

Web of science	<p>"Puncture" OR "Fire needle" OR "Acupuncture" OR "Acupuncture*" OR "Body acupuncture" OR "Scalp acupuncture" OR "manual acupuncture" OR "Auricular acupuncture" OR "ear acupuncture" OR "electroacupuncture" OR "dermal needle" OR "plum blossom needle" OR "Pyonex" OR "Abdominal acupuncture" in Title Abstract Keyword</p> <p>((TS=(Carcinoma, Non-Small-Cell Lung OR Carcinoma, Non Small Cell Lung OR Carcinomas, Non-Small-Cell Lung OR Lung Carcinoma, Non-Small-Cell OR Lung Carcinomas, Non-Small-Cell OR Non-Small-Cell Lung Carcinomas OR Carcinoma, Non-Small Cell Lung OR Non-Small Cell Lung Cancer OR Non-Small-Cell Lung Carcinoma OR Non Small Cell Lung Carcinoma OR Nonsmall Cell Lung Cancer OR Non-Small Cell Lung Carcinoma)) AND TS=(pain)) AND TS=(Acupuncture OR Pharmacopuncture OR Acupuncture therapy OR Electric needle OR Warm needle OR Puncture OR Fire needle OR Acupuncture OR Acupuncture* OR Body acupuncture OR Scalp acupuncture OR manual acupuncture OR Auricular acupuncture OR ear acupuncture OR electroacupuncture OR dermal needle OR plum blossom needle OR Pyonex OR Abdominal acupuncture)</p>
CNKI	<p>(篇关摘:癌,非小细胞肺 + 非小细胞肺癌(精确)) AND (篇关摘:针灸 + 针刺 + 温针灸 + 温针疗法 + 电针 + 毫针 + 体针 + 铍针 + 耳针 + 针刺,耳 + 干针 + 针刀 + 小刀针 + 小针刀 + 浮针 + 腹针 + 针灸疗法 + 微针 + 微波针刺 + 微波针灸(精确)) AND (全文:疼痛 + 癌痛(精确))</p>
CBM	<p>("非小细胞肺癌"[全部字段:智能] OR "癌, 非小细胞肺癌"[全部字段:智能] OR "肺癌, 非小细胞"[全部字段:智能]) AND ("疼痛"[全部字段:智能] OR "癌痛"[全部字段:智能]) AND ("针灸"[全部字段:智能] OR "温针灸"[全部字段:智能] OR "电针"[全部字段:智能] OR "针刺"[全部字段:智能] OR "火针"[全部字段:智能] OR "水针"[全部字段:智能] OR "梅花针"[全部字段:智能] OR "针刀"[全部字段:智能] OR "毫针"[全部字段:智能] OR "针"[全部字段:智能] OR "芒针"[全部字段:智能] OR "艾灸"[全部字段:智能] OR "耳针"[全部字段:智能])</p>
Wanfang	<p>全部:(针灸 OR 针刺 OR 温针灸 OR 温针疗法 OR 电针 OR 毫针 OR 体针 OR 铍针 OR 耳针 OR 针刺, 耳 OR 干针 OR 针刀 OR 小刀针 OR 小针刀 OR 浮针 OR 腹针 OR 针灸疗法 OR 微针 OR 微波针刺 OR 微波针灸) and 全部:(癌,非小细胞肺 OR 非小细胞肺癌) and 全部:(疼痛 OR 癌痛)</p>
CQVIP	<p>主题=非小细胞肺癌 OR 癌, 非小细胞肺癌 OR 肺癌, 非小细胞 AND 主题=疼痛 OR 癌痛 AND 主题=针灸 OR 温针灸 OR 电针 OR 针刺 OR 火针 OR 水针 OR 梅花针 OR 针刀 OR 毫针 OR 针 OR 芒针 OR 艾灸 OR 耳针</p>

Supplementary Table 2. The assessment of risk of bias

Huang L F 2021³²

Bias	Authors' judgement	Support for judgement
Random sequence generation (selection bias)	Unclear risk	Not mentioned
Allocation concealment (selection bias)	Unclear risk	Not mentioned
Blinding of participants and personnel (performance bias)	Unclear risk	Not mentioned
Blinding of outcome assessment (detection bias)	Unclear risk	Not mentioned
Incomplete outcome data (attrition bias)	Low risk	No missing outcome data
Selective reporting (reporting bias)	Low risk	The protocol is available, and all prespecified outcomes are reported
Other bias	Unclear risk	There was no good reason or evidence that the existing question would introduce bias

Lai Z 2019³⁶

Bias	Authors' judgement	Support for judgement
Random sequence generation (selection bias)	Low risk	Use SPSS21.0 Statistical software to generate random number
Allocation concealment (selection bias)	Low risk	Random numbers and group assigned were kept in sealed opaque envelopes.
Blinding of participants and personnel (performance bias)	Unclear risk	Not mentioned
Blinding of outcome assessment (detection bias)	Unclear risk	Not mentioned
Incomplete outcome data (attrition bias)	Low risk	Missing data were missing completely at random, and the dropout rate was less than 10%. Excluding missing data would not bias the results
Selective reporting (reporting bias)	Low risk	The protocol is available, and all prespecified outcomes are reported
Other bias	Unclear risk	There was no good reason or evidence that the existing question would introduce bias

Miao B 2020³³

Bias	Authors'	Support for judgement
-------------	-----------------	------------------------------

	judgement	
Random sequence generation (selection bias)	Low risk	Using a random number table
Allocation concealment (selection bias)	Low risk	The patients were randomly divided into two groups according to the order of visit by random number table method
Blinding of participants and personnel (performance bias)	Unclear risk	Not mentioned
Blinding of outcome assessment (detection bias)	Unclear risk	Not mentioned
Incomplete outcome data (attrition bias)	Low risk	No missing outcome data
Selective reporting (reporting bias)	Low risk	The protocol is available, and all prespecified outcomes are reported
Other bias	Unclear risk	There was no good reason or evidence that the existing question would introduce bias

Randolph H L 2006³⁹

Bias	Authors' judgement	Support for judgement
Random sequence generation (selection bias)	Low risk	Computer-generated random numbers were used
Allocation concealment (selection bias)	Low risk	Random numbers and group assigned were kept in sealed opaque envelopes.
Blinding of participants and personnel (performance bias)	Low risk	The participants and personnel were blinded
Blinding of outcome assessment (detection bias)	Low risk	The assessors were blinded
Incomplete outcome data (attrition bias)	Low risk	Data on each primary outcome measure are fully reported, including the number, reasons for, and management of loss to follow-up and withdrawal
Selective reporting (reporting bias)	Unclear risk	There was insufficient information to determine low or high risk
Other bias	Low risk	No other sources of bias

Tian W P 2020³⁴

Bias	Authors' judgement	Support for judgement
Random sequence generation (selection bias)	Low risk	Using a random number table
Allocation concealment (selection bias)	Low risk	Random numbers and group assigned were kept in sealed opaque envelopes.

Blinding of participants and personnel (performance bias)	Unclear risk	Not mentioned
Blinding of outcome assessment (detection bias)	Unclear risk	Not mentioned
Incomplete outcome data (attrition bias)	Low risk	Data on each primary outcome measure are fully reported, including the number, reasons for, and management of loss to follow-up and withdrawal
Selective reporting (reporting bias)	Low risk	The protocol is available, and all prespecified outcomes are reported
Other bias	Low risk	No other sources of bias

Wang J C 2024²⁹

Bias	Authors' judgement	Support for judgement
Random sequence generation (selection bias)	Low risk	Using a random number table
Allocation concealment (selection bias)	Low risk	Random numbers and group assigned were kept in sealed opaque envelopes.
Blinding of participants and personnel (performance bias)	Unclear risk	Not mentioned
Blinding of outcome assessment (detection bias)	Unclear risk	Not mentioned
Incomplete outcome data (attrition bias)	Low risk	No missing outcome data
Selective reporting (reporting bias)	Low risk	The protocol is available, and all prespecified outcomes are reported
Other bias	Low risk	No other sources of bias

Wang Y 2016³⁷

Bias	Authors' judgement	Support for judgement
Random sequence generation (selection bias)	Low risk	Random number method
Allocation concealment (selection bias)	Unclear risk	Not mentioned
Blinding of participants and personnel (performance bias)	Unclear risk	Not mentioned
Blinding of outcome assessment (detection bias)	Unclear risk	Not mentioned
Incomplete outcome data (attrition bias)	Low risk	No missing outcome data

Selective reporting (reporting bias)	Low risk	The protocol is available, and all prespecified outcomes are reported
Other bias	Unclear risk	There was no good reason or evidence that the existing question would introduce bias

Wen X H 2019³⁵

Bias	Authors' judgement	Support for judgement
Random sequence generation (selection bias)	Low risk	In Excel, use the "RAND ()" function to generate random numbers
Allocation concealment (selection bias)	Low risk	Allocation hiding is achieved by using random number generation and sorting
Blinding of participants and personnel (performance bias)	Low risk	The participants and personnel were blinded
Blinding of outcome assessment (detection bias)	Low risk	The assessors were blinded
Incomplete outcome data (attrition bias)	Low risk	Data on each primary outcome measure are fully reported, including the number, reasons for, and management of loss to follow-up and withdrawal
Selective reporting (reporting bias)	Low risk	The protocol is available, and all prespecified outcomes are reported
Other bias	Low risk	No other sources of bias

Yao J L 2022³¹

Bias	Authors' judgement	Support for judgement
Random sequence generation (selection bias)	Low risk	Random numbers are generated by third-party personnel using SPSS25.0 software
Allocation concealment (selection bias)	Low risk	Random numbers are generated by third-party personnel using SPSS25.0 software Patients were randomly divided into observation group and control group
Blinding of participants and personnel (performance bias)	High risk	This was an unblinded study
Blinding of outcome assessment (detection bias)	High risk	This was an unblinded study
Incomplete outcome data (attrition bias)	Low risk	No missing outcome data
Selective reporting (reporting bias)	Low risk	The protocol is available, and all prespecified outcomes are reported
Other bias	Low risk	No other sources of bias

Yuan L 2023³⁰

Bias	Authors' judgement	Support for judgement
Random sequence generation (selection bias)	Low risk	Using a random number table
Allocation concealment (selection bias)	Unclear risk	Not mentioned
Blinding of participants and personnel (performance bias)	Unclear risk	Not mentioned
Blinding of outcome assessment (detection bias)	Unclear risk	Not mentioned
Incomplete outcome data (attrition bias)	Low risk	No missing outcome data
Selective reporting (reporting bias)	Low risk	The protocol is available, and all prespecified outcomes are reported
Other bias	Low risk	No other sources of bias

Zhu S H 2010³⁸

Bias	Authors' judgement	Support for judgement
Random sequence generation (selection bias)	Low risk	Using a random number table
Allocation concealment (selection bias)	Low risk	The patients were numbered according to the enrollment time and divided into groups by random number table method
Blinding of participants and personnel (performance bias)	Unclear risk	Not mentioned
Blinding of outcome assessment (detection bias)	Unclear risk	Not mentioned
Incomplete outcome data (attrition bias)	Unclear risk	Two cases dropped out, and the reasons were not reported
Selective reporting (reporting bias)	Low risk	The protocol is available, and all prespecified outcomes are reported
Other bias	Low risk	No other sources of bias

Supplementary Table 3. Sensitivity analyses for outcomes: (A) Pain Intensity. (B) Adverse Events. (C) Total Effective Rate. (D) Degree of Insomnia. (E) Fatigue Degree. (F) Anorexia Score.

A

Excluded study	Intervention group(n)	Control group(n)	RR/SMD (95% CI)	P value	Heterogeneity test	Effect model
Before excluding	374	371	-1.33[-2.02, -0.63]	<0.001	P <0.001, I ² =94%	Random
Huang L F 2021 ³²	344	341	-0.95 [-1.51, -0.38]	0.001	P <0.001, I ² =91%	Random
Lai Z 2019 ³⁶	342	339	-1.43 [-2.20, -0.66]	<0.001	P <0.001, I ² =95%	Random
Miao B 2020 ³³	298	296	-1.46 [-2.24, -0.68]	<0.001	P <0.001, I ² =94%	Random
Randolph H L 2006 ³⁹	361	359	-1.43 [-2.17, -0.69]	<0.001	P <0.001, I ² =95%	Random
Tian W P 2020 ³⁴	350	348	-1.25 [-1.97, -0.53]	<0.001	P <0.001, I ² =94%	Random
Wang J C 2024 ²⁹	326	323	-1.06 [-1.65, -0.48]	<0.001	P <0.001, I ² =91%	Random
Wang Y 2016 ³⁷	344	341	-1.41 [-2.18, -0.65]	<0.001	P <0.001, I ² =95%	Random
Wen X H 2019 ³⁵	349	346	-1.42 [-2.18, -0.67]	<0.001	P <0.001, I ² =95%	Random
Yao J L 2022 ³¹	343	340	-1.35 [-2.11, -0.59]	<0.001	P <0.001, I ² =95%	Random
Yuan L 2023 ³⁰	339	336	-1.41 [-2.19, -0.64]	<0.001	P <0.001, I ² =95%	Random
Zhu S H 2010 ³⁸	344	341	-1.42 [-2.19, -0.66]	<0.001	P <0.001, I ² =95%	Random

B

Excluded study	Intervention group(n)	Control group(n)	RR/SMD (95% CI)	P value	Heterogeneity test	Effect model
Before excluding	224	223	0.25 [0.14, 0.43]	<0.001	P =0.22, I ² =29%	Fixed
Huang L F 2021 ³²	194	193	0.29 [0.16, 0.51]	<0.001	P =0.23, I ² =29%	Fixed
Lai Z 2019 ³⁶	192	191	0.25 [0.14, 0.44]	<0.001	P =0.13, I ² =43%	Fixed
Tian W P 2020 ³⁴	200	200	0.25 [0.14, 0.43]	<0.001	P =0.22, I ² =29%	Fixed
Wang J C 2024 ²⁹	176	175	0.25 [0.13, 0.50]	<0.001	P =0.13, I ² =43%	Fixed
Wang Y 2016 ³⁷	194	193	0.27 [0.14, 0.51]	<0.001	P =0.15, I ² =41%	Random
Wen X H 2019 ³⁵	199	198	0.18 [0.10, 0.34]	<0.001	P =0.82, I ² =0%	Random
Yuan L 2023 ³⁰	189	188	0.25 [0.14, 0.45]	<0.001	P =0.13, I ² =43%	Random

C

Excluded study	Intervention group(n)	Control group(n)	RR/SMD (95% CI)	P value	Heterogeneity test	Effect model
Before excluding	219	218	3.30 [1.15, 9.46]	<0.001	P = 0.008, I ² = 71%	Random
Huang L F 2021 ³²	189	188	2.43 [0.96, 6.12]	<0.001	P = 0.04, I ² = 65%	Random

Miao B 2020 ³³	143	143	4.79 [1.64, 13.97]	<0.001	P = 0.12 I ² = 48%	Fixed
Wang J C 2024 ²⁹	171	170	2.87[0.82,10.01]	<0.001	P = 0.02, I ² = 69%	Random
Wang Y 2016 ³⁷	189	188	4.43[1.11,17.60]	<0.001	P = 0.004, I ² = 78%	Random
Yuan L 2023 ³⁰	184	183	2.99 [0.88, 10.51]	<0.001	P = 0.007, I ² = 75%	Random

D

Excluded study	Intervention group(n)	Control group(n)	RR/SMD (95% CI)	P value	Heterogeneity test	Effect model
Before excluding	216	214	-0.67 [-1.03, -0.31]	<0.001	P = 0.009, I ² = 67%	Random
Miao B 2020 ³³	140	139	-0.69[-1.17, -0.21]	0.005	P = 0.004, I ² = 74%	Random
Tian W P 2020 ³⁴	192	191	-0.53 [-0.78, -0.29]	<0.001	P = 0.24 I ² = 27%	Fixed
Wang Y 2016 ³⁷	186	184	-0.68[-1.12, -0.25]	0.002	P = 0.004, I ² = 74%	Random
Wen X H 2019 ³⁵	191	189	-0.78[-1.13, -0.43]	<0.001	P = 0.04, I ² = 60%	Random
Yao J L 2022 ³¹	185	183	-0.64[-1.07, -0.21]	0.003	P = 0.006, I ² = 73%	Random
Zhu S H 2010 ³⁸	186	184	-0.74[-1.15, -0.32]	<0.001	P = 0.007, I ² = 71%	Random

E

Excluded study	Intervention group(n)	Control group(n)	RR/SMD (95% CI)	P value	Heterogeneity test	Effect model
Before excluding	189	188	-1.18 [-2.04, -0.33]	0.007	P <0.001, I ² =93%	Random
Lai Z 2019 ³⁶	157	156	-1.33[-2.36, -0.29]	0.01	P <0.001, I ² =94%	Random
Tian W P 2020 ³⁴	165	165	-1.01[-1.95, -0.08]	0.03	P <0.001, I ² =93%	Random
Wang J C 2024 ²⁹	141	140	-0.77 [-1.27, -0.27]	0.003	P=0.002, I ² = 76%	Random
Wang Y 2016 ³⁷	159	158	-1.31[-2.35, -0.26]	0.01	P <0.001, I ² =94%	Random
Wen X H 2019 ³⁵	164	163	-1.34[-2.35, -0.33]	0.009	P <0.001, I ² =94%	Random
Zhu S H 2010 ³⁸	159	158	-1.33[-2.36, -0.30]	0.01	P <0.001, I ² =94%	Random

F

Excluded study	Intervention group(n)	Control group(n)	RR/SMD (95% CI)	P value	Heterogeneity test	Effect model
Before excluding	141	140	-0.40 [-0.74, -0.06]	0.02	P =0.16, I ² =41%	Fixed
Lai Z 2019 ³⁶	109	108	-0.58[-0.89, -0.27]	<0.001	P =0.97, I ² =0%	Fixed
Tian W P 2020 ³⁴	117	117	-0.40[-0.74, -0.06]	0.02	P =0.16, I ² =41%	Fixed
Wang Y 2016 ³⁷	111	110	-0.33[-0.77, 0.10]	0.14	P =0.12, I ² =53%	Random
Wen X H 2019 ³⁵	116	115	-0.37[-0.83, 0.09]	0.11	P =0.09, I ² =59%	Random
Zhu S H 2010 ³⁸	111	110	-0.34[-0.78, 0.10]	0.13	P =0.12, I ² =53%	Random

Supplementary Table 4. The process of the Egger test: (A) Total Effective Rate. (B) Pain Intensity. (C) Degree of Insomnia. (D) Anorexia Score. (E) Fatigue Degree. (F) Adverse Events.

A

Egger's test

Std_Eff	Coef.	Std. Err.	t	P> t	[95% Conf. Interval]	
slope	1.089377	.108442	10.05	0.002	.7442666	1.434488
bias	-1.35569	.8394075	-1.62	0.205	-4.027059	1.315679

B

Std_Eff	Coef.	Std. Err.	t	P> t	[95% Conf. Interval]	
slope	1.738498	.8527245	2.04	0.072	-.1904987	3.667495
bias	-9.927249	3.146999	-3.15	0.012	-17.04625	-2.808243

C

Std_Eff	Coef.	Std. Err.	t	P> t	[95% Conf. Interval]	
slope	-.2312969	.8236602	-0.28	0.793	-2.518144	2.05555
bias	-1.757632	3.362569	-0.52	0.629	-11.09362	7.578356

D

Std_Eff	Coef.	Std. Err.	t	P> t	[95% Conf. Interval]	
slope	3.54117	3.326532	1.06	0.399	-10.77174	17.85408
bias	-14.84835	12.51836	-1.19	0.357	-68.7105	39.0138

E

Std_Eff	Coef.	Std. Err.	t	P> t	[95% Conf. Interval]	
slope	4.759546	2.977744	1.60	0.185	-3.507997	13.02709
bias	-20.60217	10.49936	-1.96	0.121	-49.75306	8.548724

F

Egger's test

Std_Eff	Coef.	Std. Err.	t	P> t	[95% Conf. Interval]	
slope	.8337828	.175252	4.76	0.009	.3472052	1.32036
bias	3.611645	2.203148	1.64	0.176	-2.505274	9.728563

Supplementary Table 5. Trim-and-fill test.

Meta-analysis

Method	Pooled Est	95% CI Lower	95% CI Upper	Asymptotic z_value	Asymptotic p_value	No. of studies
Fixed	-0.832	-0.992	-0.672	-10.185	0.000	11
Random	-1.344	-2.043	-0.645	-3.768	0.000	

Test for heterogeneity: $Q= 179.075$ on 10 degrees of freedom ($p= 0.000$)
Moment-based estimate of between studies variance = **1.294**

Trimming estimator: **Linear**

Meta-analysis type: **Random-effects model**

iteration	estimate	Tn	# to trim	diff
1	-1.344	41	2	66
2	-1.611	43	2	4
3	-1.611	43	2	0

Filled

Meta-analysis

Method	Pooled Est	95% CI Lower	95% CI Upper	Asymptotic z_value	Asymptotic p_value	No. of studies
Fixed	-1.327	-1.467	-1.186	-18.456	0.000	13
Random	-1.619	-2.393	-0.845	-4.101	0.000	

Test for heterogeneity: $Q= 341.113$ on 12 degrees of freedom ($p= 0.000$)
Moment-based estimate of between studies variance = **1.922**

Supplementary Table 6. Evidence reliability result.

Outcomes Intervention and Comparison intervention	Illustrative comparative risks* (95% CI) Assumed risk With comparator	Corresponding risk With intervention	Relative effect (95% CI)	No of Participants (studies)	Quality of the evidence (GRADE)	Comments
Pain Intensity						
Pain intensity/	The mean pain intensity in the intervention groups was 1.24 standard deviations lower (1.91 to 0.58 lower)			745 (11 studies)	⊕ ⊕ ⊕ ⊕ moderate	SMD -1.24 (-1.91 to -0.58)
Total effective rate						
Total effective rate/NSCLC	Study population 564 per 1000 810 per 1000 (598 to 925)		OR 3.3 (1.15 to 9.46)	437 (5 studies)	⊕ ⊕ ⊕ ⊕ low	
	Moderate 604 per 1000 834 per 1000 (637 to 935)					
Degree of insomnia						
Degree of insomnia/NSCLC	The mean sleep in the intervention groups was 0.73 standard deviations lower (1.16 to 0.3 lower)			430 (6 studies)	⊕ ⊕ ⊕ ⊕ moderate	SMD -0.73 (-1.16 to -0.3)
Fatigue degree						
Fatigue degree/NSCLC	The mean tired in the intervention groups was 1.23 standard deviations lower (2.12 to 0.35 lower)			377 (6 studies)	⊕ ⊕ ⊕ ⊕ moderate	SMD -1.23 (-2.12 to -0.35)
Anorexia score						
Anorexia score/NSCLC	The mean appetite in the intervention groups was 0.4 standard deviations lower (0.74 to 0.06 lower)			281 (5 studies)	⊕ ⊕ ⊕ ⊕ low	SMD -0.4 (-0.74 to -0.06)
Adverse events						
Adverse events/NSCLC	Study population 283 per 1000 90 per 1000 (52 to 145)		OR 0.25 (0.14 to 0.43)	447 (7 studies)	⊕ ⊕ ⊕ ⊕ low	
	Moderate 286 per 1000 91 per 1000 (53 to 147)					