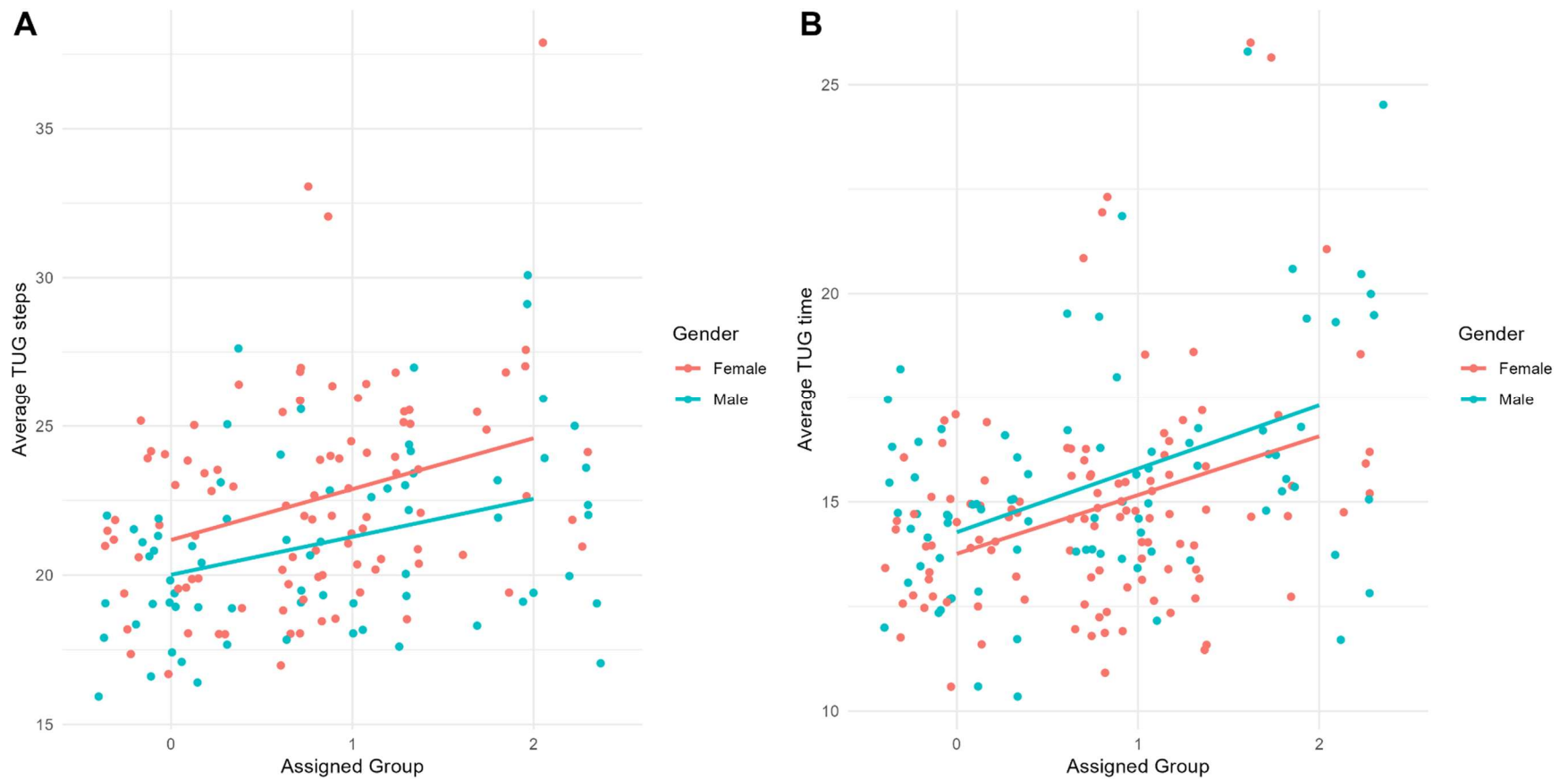


Table S1. Sensitivity Analysis

Variable	TUG Steps Included (n=166)	TUG Steps Excluded (n=28)	<i>P</i>	Logistic Regression included (CU only; n=111)	Logistic Regression excluded (CU only; n=39)	<i>P</i>	GAM Included (CU only; n=91)	GAM Excluded (CU only; n=59)	<i>P</i>
Age (years)	67.3 (6.11)	67.0 (5.87)	.816	67.0 (6.19)	67.4 (5.07)	.727	67.2 (6.43)	66.9 (5.02)	.814
Gender (f/m)	97/69	15/13	.632	70/41	24/15	.867	59/32	35/24	.499
Education (years)	16.3 (2.32)	17.1 (2.68)	.082	16.6 (2.37)	16.1 (2.31)	.230	16.5 (2.31)	16.4 (2.44)	.826
MoCA (score)	26.7 (2.62)	26.4 (3.39)	.595	27.4 (1.93)	27.4 (1.94)	.922	27.5 (1.77)	27.4 (2.16)	.813
APOE (ε4+/ε4-)	94/71	10/18	<b>.042</b>	61/50	22/17	.999	30/29	53/38	.404
CDR (score =0 / >0)	141/23	24/4	.999	106/3	36/3	.187	88/1	54/5	<b>.037</b>

Note. APOE = Apolipoprotein E, CDR = Clinical Dementia Rating Scale, CU = Cognitively Unimpaired, GAM = Generalized Additive Model, MoCA = Montreal Canadian Assessment, TUG = Timed Up and Go. Bolded p-values indicate statistical significance below the alpha = .05. Values are given as mean (SD) unless otherwise specified.



**Figure S1:** Scatterplots illustrating gender differences on average TUG steps and time across group assignments. A. Scatterplot of the average number of steps taken for completion on the TUG by females (red) and males (blue) across group assignments. Males took significantly fewer steps than females. B. Scatterplot of the average time to completion on the TUG by females (red) and males (blue) across group assignments.