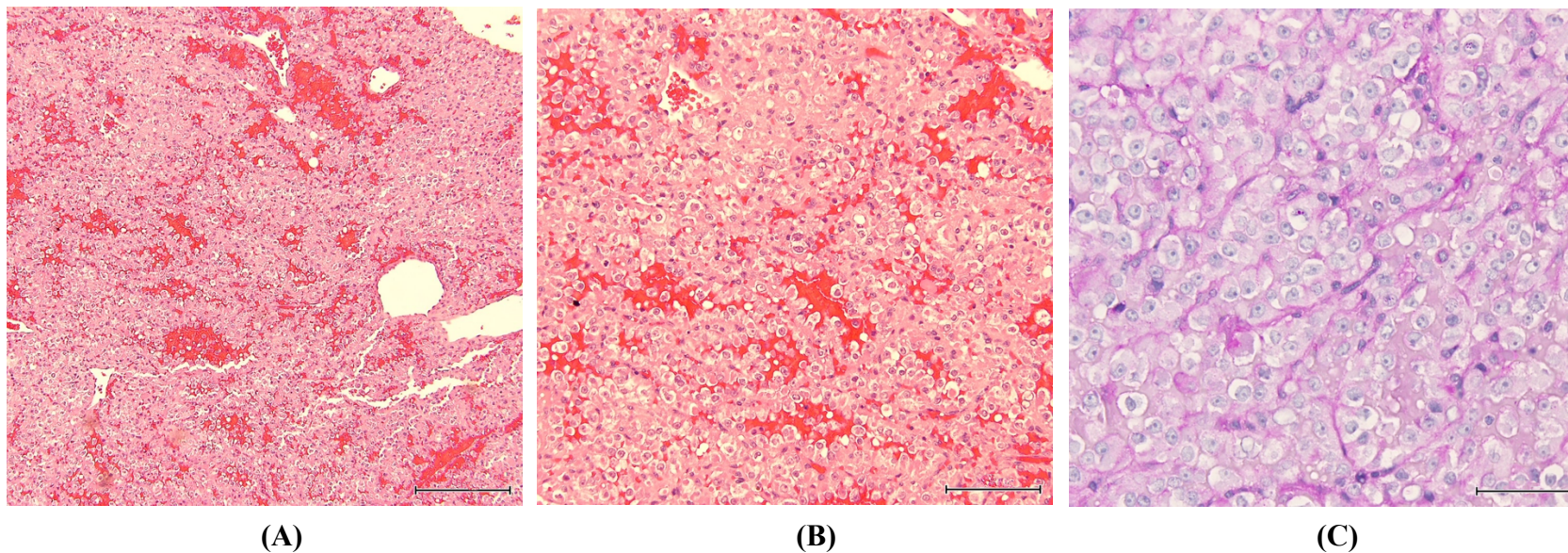


## SUPPLEMENTARY



**Supplement. 1:** Histopathological features of orbital alveolar soft part sarcoma (ASPS) tumor cells. (A, B) Hematoxylin and eosin (H&E) sections showing a malignant mesenchymal tumor composed of large, polygonal cells with abundant eosinophilic cytoplasm arranged in a vaguely nested and pseudoalveolar growth pattern. (C) Periodic acid–Schiff with diastase (PAS-D) stain highlighting intracytoplasmic rhomboid rod-shaped crystals. The black scale bar in (A) represents 200  $\mu\text{m}$  at 100 $\times$  magnification; in (B), 100  $\mu\text{m}$  at 200 $\times$ ; and in (C), 50  $\mu\text{m}$  at 400 $\times$ .