

***Task-Shifting from Acupuncturists to Nurses in Delivering Acupuncture/Acupressure or Supervising Patient Self-Administered Acupressure for Sleep Management: Is It Feasible?***

Fei-Yi Zhao<sup>1,2,3,4†</sup>, Wen-Jing Zhang<sup>4†</sup>, Chin-Moi Chow<sup>3,5†</sup>, Yuan Xin Lee<sup>4</sup>, Peijie Xu<sup>6</sup>, Yuen-Shan Ho<sup>7\*</sup>, Qiang-Qiang Fu<sup>8\*</sup>, Russell Conduit<sup>2</sup>

<sup>1</sup> Department of Nursing, School of International Medical Technology, Shanghai Sanda University, Shanghai, 201209, People's Republic of China

<sup>2</sup> School of Health and Biomedical Sciences, RMIT University, Bundoora, VIC, 3083, Australia

<sup>3</sup> Sydney School of Health Sciences, Faculty of Medicine and Health, The University of Sydney, Camperdown, NSW, 2050, Australia

<sup>4</sup> Shanghai Municipal Hospital of Traditional Chinese Medicine, Shanghai University of Traditional Chinese Medicine, Shanghai, 200071, People's Republic of China

<sup>5</sup> Sleep Research Group, Charles Perkins Centre, The University of Sydney, Camperdown, NSW, 2050, Australia

<sup>6</sup> School of Computing Technologies, RMIT University, Melbourne, VIC, 3000, Australia

<sup>7</sup> School of Nursing, Faculty of Health and Social Sciences, The Hong Kong Polytechnic University, Hong Kong SAR, People's Republic of China

<sup>8</sup> Yangpu Hospital, School of Medicine, Tongji University, Shanghai, 200090, People's Republic of China

† These authors contributed equally to this work

***Correspondence:***

Yuen-Shan Ho, School of Nursing, Faculty of Health and Social Sciences, The Hong Kong Polytechnic University, Hong Kong SAR, People's Republic of China, Tel: (+852) 2766-6410, Fax: (+852) 2364-9663, E-mail: [janice.ys.ho@polyu.edu.hk](mailto:janice.ys.ho@polyu.edu.hk)

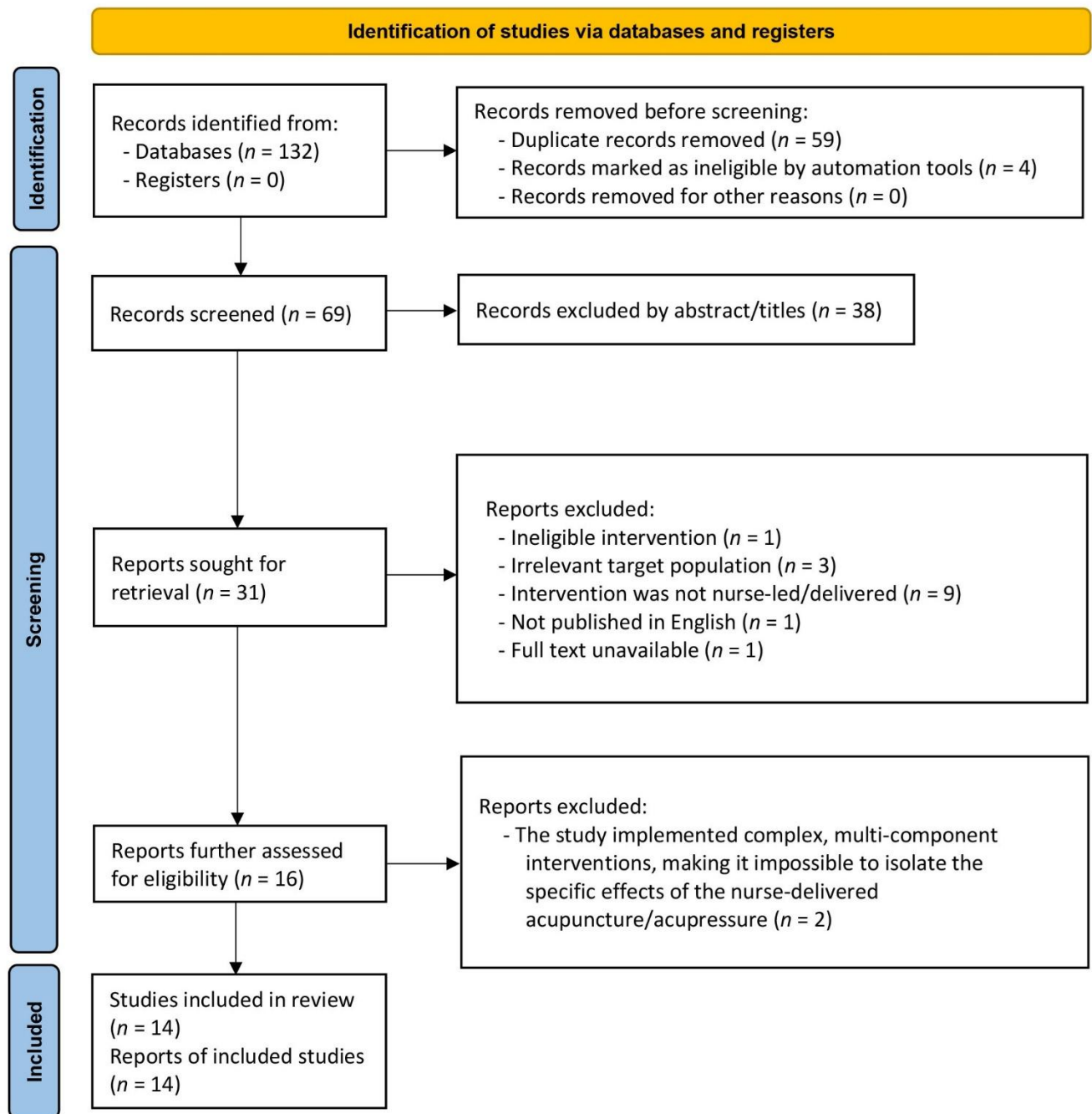
Qiang-Qiang Fu, Yangpu Hospital, School of Medicine, Tongji University, Shanghai, 200090, People's Republic of China, Tel: (+ 86) 021-6569 0520, Fax: (+ 86) 021-6569 6249; Email: [qiangqiang.fu@tongji.edu.cn](mailto:qiangqiang.fu@tongji.edu.cn)

**APPENDIX 1 Search Strategy for Each Database**

Databases	Search strategy
MEDLINE (via PubMed)	<p>#1 "acupuncture"[MeSH Terms]                      #2 "acupuncture"[Title/Abstract]                      #3 "electroacupuncture"[MeSH Terms]                      #4 "electroacupuncture"[Title/Abstract] OR "electro-acupuncture"[Title/Abstract]                      #5 "acupressure"[MeSH Terms]                      #6 "acupressure"[Title/Abstract]                      #7 "auricular acupuncture"[Title/Abstract] OR "auricular acupressure"[Title/Abstract] OR "ear acupressure"[Title/Abstract]                      #8 #1 OR #2 OR #3 OR #4 OR #5 OR #6 OR #7                      #9 "sleep initiation and maintenance disorders"[MeSH Terms]                      #10 "insomnia"[Title/Abstract]                      #11 "sleep disorder*"[Title/Abstract]                      #12 "dyssomnia*"[Title/Abstract]                      #13 "sleeplessness"[Title/Abstract] OR "sleepless"[Title/Abstract]                      #14 "early awakening"[Title/Abstract]                      #15 "difficulty falling asleep"[Title/Abstract] OR "difficulty maintaining sleep"[Title/Abstract]                      #16 #9 OR #10 OR #11 OR #12 OR #13 OR #14 OR #15                      #17 "nurse-led"[Title/Abstract] OR "nurse led"[Title/Abstract] OR "nurse-led initiative*"[Title/Abstract]                      #18 "nursing-led"[Title/Abstract] OR "nursing led"[Title/Abstract]                      #19 "nurse-administered"[Title/Abstract] OR "nurse administered"[Title/Abstract]                      #20 "nurse-based"[Title/Abstract] OR "nurse based"[Title/Abstract]                      #21 "nurse-driven"[Title/Abstract] OR "nurse driven"[Title/Abstract]                      #22 "nurses"[MeSH Terms]                      #23 "nurse*"[Title/Abstract]                      #24 "nursing"[Title/Abstract]                      #25 #17 OR #18 OR #19 OR #20 OR #21 OR #22 OR #23 OR #24                      #26 #8 AND #16 AND #25</p>
Cochrane Central Register of Controlled Trials (CENTRAL)	<p>#1 (acupuncture):ti,ab,kw                      #2 (electroacupuncture or electro-acupuncture):ti,ab,kw                      #3 (acupressure):ti,ab,kw                      #4 (auricular acupressure or ear acupressure or auricular acupuncture):ti,ab,kw                      #5 (#1 OR #2 OR #3 OR #4)                      #6 (insomnia):ti,ab,kw                      #7 (sleep disorder* or sleep disturbance*):ti,ab,kw                      #8 (sleeplessness or sleepless):ti,ab,kw                      #9 (early awakening):ti,ab,kw                      #10 (difficulty falling asleep or difficulty maintaining sleep):ti,ab,kw                      #11 (dyssomnia*):ti,ab,kw                      #12 (#6 OR #7 OR #8 OR #9 OR #10 OR #11)                      #13 (nurse-led or "nurse led"):ti,ab,kw</p>

	<p>#14 (nursing-led or "nursing led"):ti,ab,kw  #15 (nurse-administered or "nurse administered"):ti,ab,kw  #16 (nurse-based or "nurse based" or nurse-driven or "nurse driven"):ti,ab,kw  #17 (nurse or nurses or nursing):ti,ab,kw  #18 (#13 OR #14 OR #15 OR #16 OR #17)  #19 (#5 AND #12 AND #18)</p>
EMBASE (via Ovid)	<p>#1 'acupuncture'/exp  #2 'acupuncture':ti,ab,kw  #3 'electroacupuncture'/exp  #4 'electroacupuncture':ti,ab,kw OR 'electro-acupuncture':ti,ab,kw  #5 'acupressure'/exp  #6 'acupressure':ti,ab,kw  #7 'auricular acupressure':ti,ab,kw OR 'ear acupressure':ti,ab,kw OR 'auricular acupuncture':ti,ab,kw  #8 #1 OR #2 OR #3 OR #4 OR #5 OR #6 OR #7  #9 'insomnia'/exp  #10 'insomnia':ti,ab,kw  #11 'sleep disorder*':ti,ab,kw  #12 'sleeplessness':ti,ab,kw OR 'sleepless':ti,ab,kw  #13 'early awakening':ti,ab,kw  #14 'difficulty falling asleep':ti,ab,kw OR 'difficulty maintaining sleep':ti,ab,kw  #15 'dyssomnia*':ti,ab,kw  #16 #9 OR #10 OR #11 OR #12 OR #13 OR #14 OR #15  #17 'nurse'/exp  #18 'nurse-led':ti,ab,kw OR 'nurse led':ti,ab,kw  #19 'nursing-led':ti,ab,kw OR 'nursing led':ti,ab,kw  #20 'nurse-administered':ti,ab,kw OR 'nurse administered':ti,ab,kw  #21 'nurse-based':ti,ab,kw OR 'nurse based':ti,ab,kw OR 'nurse-driven':ti,ab,kw OR 'nurse driven':ti,ab,kw  #22 'nurse*':ti,ab,kw OR 'nursing':ti,ab,kw  #23 #17 OR #18 OR #19 OR #20 OR #21 OR #22  #24 #8 AND #16 AND #23</p>

## APPENDIX 2 Flow Diagram of the Study Selection



**Notes:** PRISMA Figure was adapted from Page MJ, McKenzie JE, Bossuyt PM, *et al.* The PRISMA 2020 statement: an updated guideline for reporting systematic reviews. *BMJ*, 2021; 372: n71 doi:10.1136/bmj.n71. Creative Commons