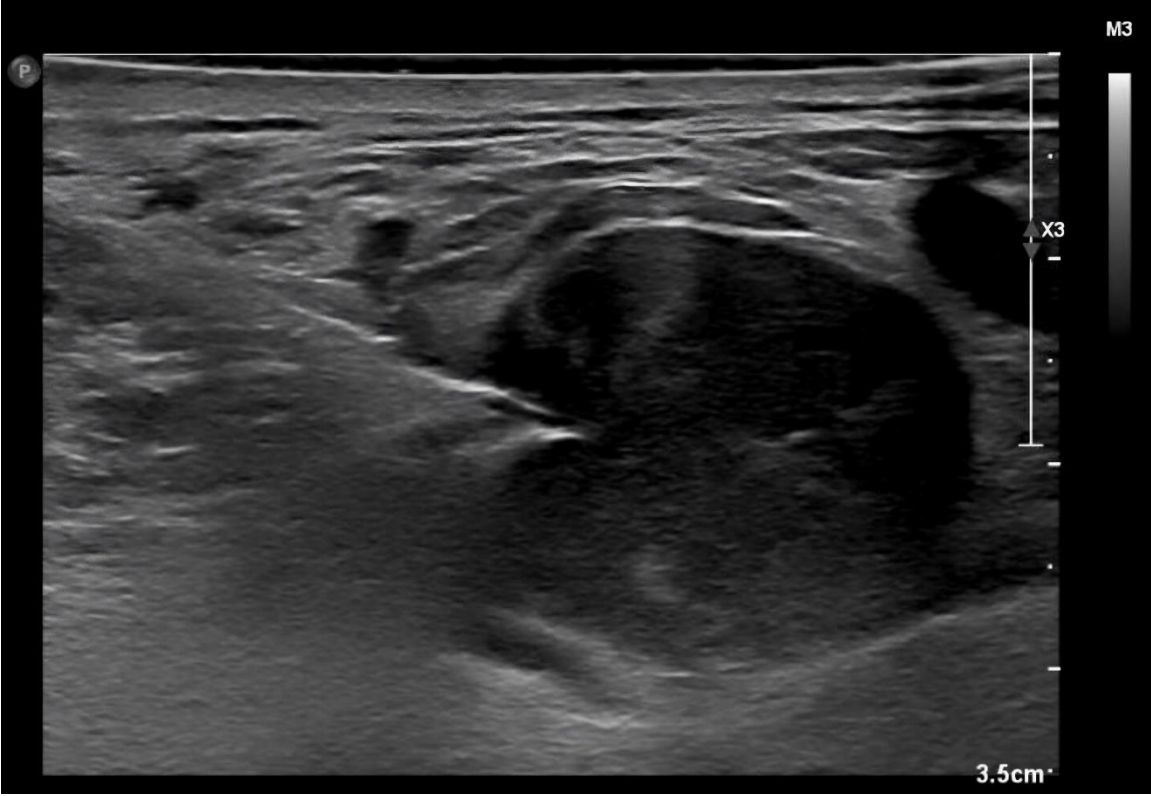


# Supplementary Material

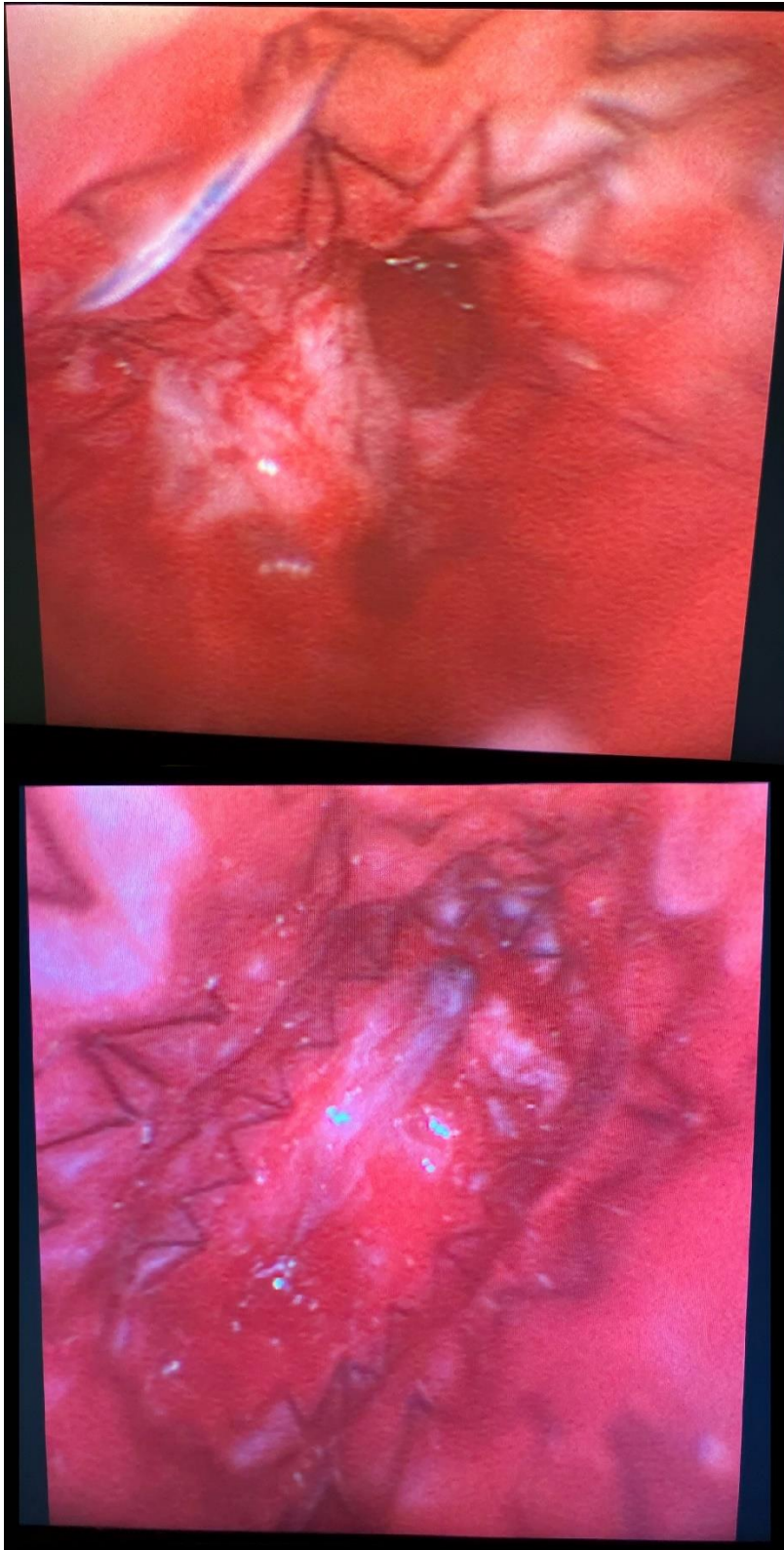
## Supplementary Figure 1

Ultrasonographic image of supraclavicular biopsy demonstrating needle reaching within the core tissue of an enlarged lymph node.



***Supplementary Figure 2***

**Rigid bronchoscopy demonstrating tumor tissue completely occluding the distal end of the endobronchial stent (bottom panel) with mostly patent proximal portions (top panel).**



### ***Supplementary Figure 3***

**Coronal contrast-enhanced CT images of the chest (panels A–C) demonstrating extrinsic compression of the left mainstem bronchus by bulky mediastinal tumor and lymphadenopathy. An endobronchial stent (yellow arrowhead) can be seen within the left mainstem bronchus with occluded distal end. Heterogeneous opacification of the entire left hemithorax secondary to necrotic tumor is seen with complete loss of lung volume.**

