

Self-assembled nanoparticles loaded with PI3K γ inhibitors for
detoxification of doxorubicin-induced cardiotoxicity and enhancement of
antitumor therapy

List of Supplementary Figures

Figure S1. The characteristic peak and standard curve of PI3K γ inhibitor.

Figure S2. The fluorescence intensity of DiD of DiD-labeled GPP/NPs and DiD labeled PGPP/NPs .

Figure S3. Assessment of biosafety of PGPP/NPs in BALB/c mice.

Figure S4. Determination of IC₅₀ values of Dox to H9C2 cells).

Figure S5. The expression levels of IL-6 and TNF- α in control and EAM groups.

Figure S6. Determination of the maximal tolerated dosage (MTD) of Dox by analyzing body weight and survival rate of BALB/c mice.

Figure S7. The blood biochemical indexes in the control group and the DOX groups.

Figure S8. Tumor volume changes of mice in different treatment groups.

Figure S1. The characteristic peak and standard curve of PI3K γ inhibitor.

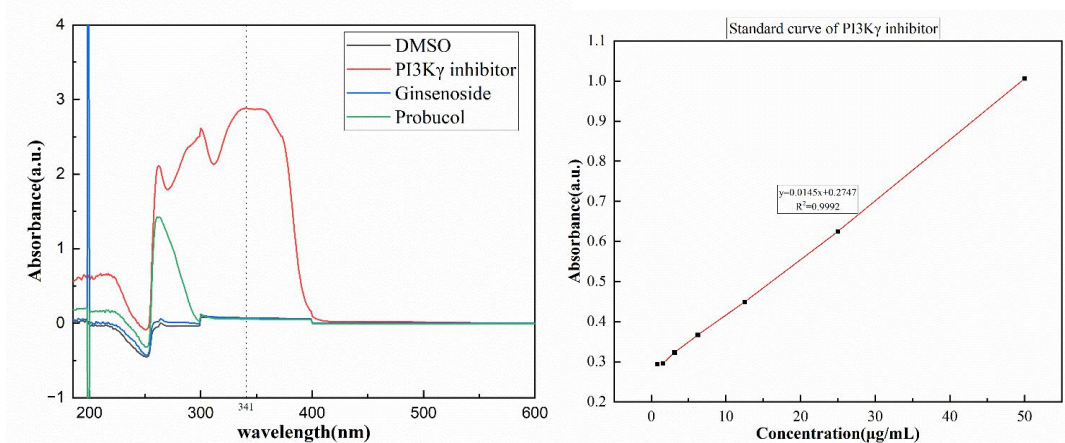


Figure S2. The fluorescence intensity of DiD of DiD-labeled GPP/NPs and DiD labeled PGPP/NPs. (n = 3). Data are presented as the mean \pm SD. * $p < 0.05$; ** $p < 0.01$; *** $p < 0.001$; **** $p < 0.0001$.

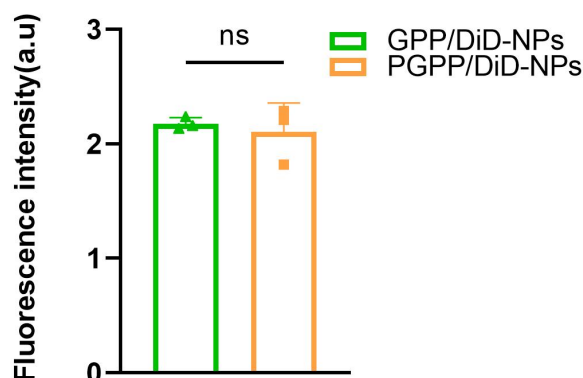


Figure S3. Assessment of biosafety of PGPP/NPs in BALB/c mice. A) Major hematological analysis, including assessment of white blood cell (WBC), red blood cell (RBC), hemoglobin (HGB), mean corpuscular volume (MCV), and platelet (PLT) (n = 3). B) Blood biochemistry data showing hepatic function-related enzymes and proteins including alanine aminotransferase (ALT), aspartate aminotransferase (AST); renal function-associated components including blood urea nitrogen (UREA) and creatinine (CREA)(n = 3). C) Hematoxylin and eosin (HE) staining images of the major organs including heart, liver, spleen, lungs and kidneys. Scale bars, 100 μ m. Data are presented as the mean \pm SD.

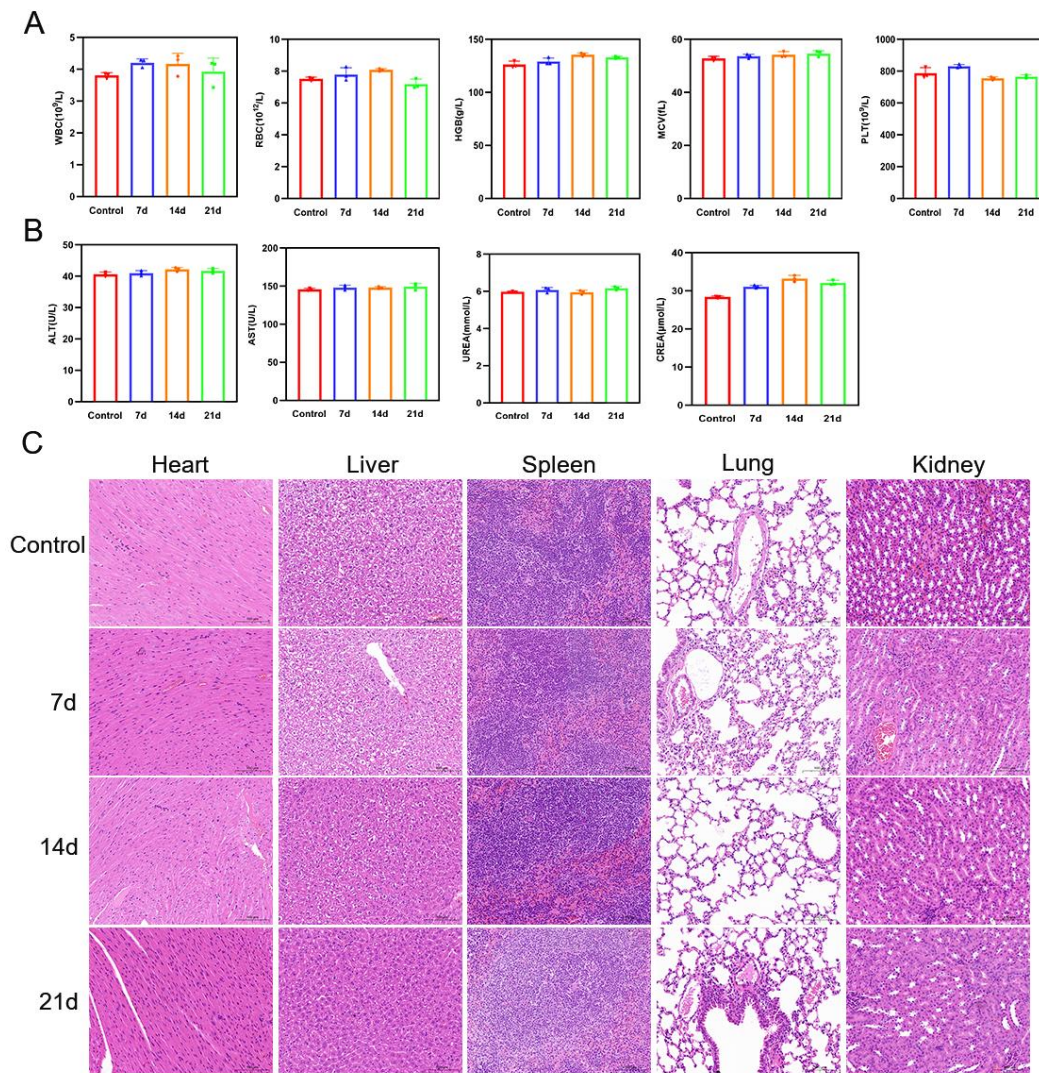


Figure S4. Determination of IC₅₀ values of Dox to H9C2 cells (n = 4). Data are presented as the mean ± SD.

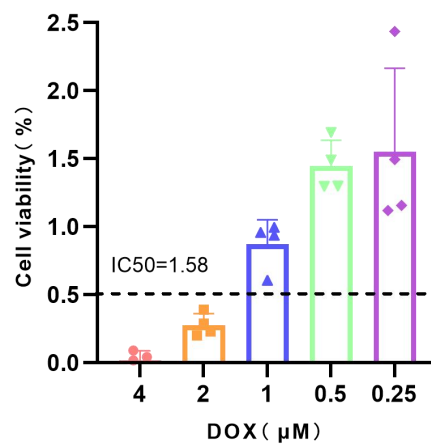


Figure S5. The expression levels of IL-6 and TNF- α in control and EAM groups. (n = 3). Data are presented as the mean \pm SD. * $p < 0.05$; ** $p < 0.01$; *** $p < 0.001$; **** $p < 0.0001$.

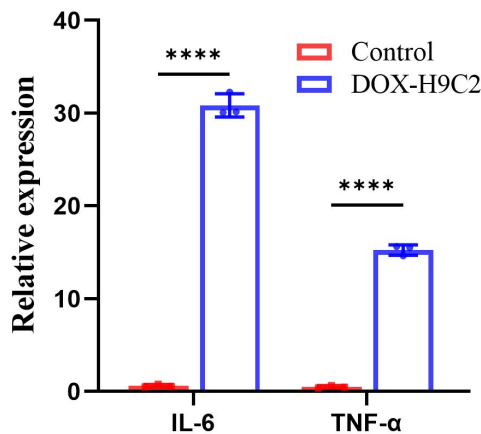


Figure S6. Determination of the maximal tolerated dosage (MTD) of Dox by analyzing body weight and survival rate of BALB/c mice. (n = 3). Data are presented as the mean \pm SD.

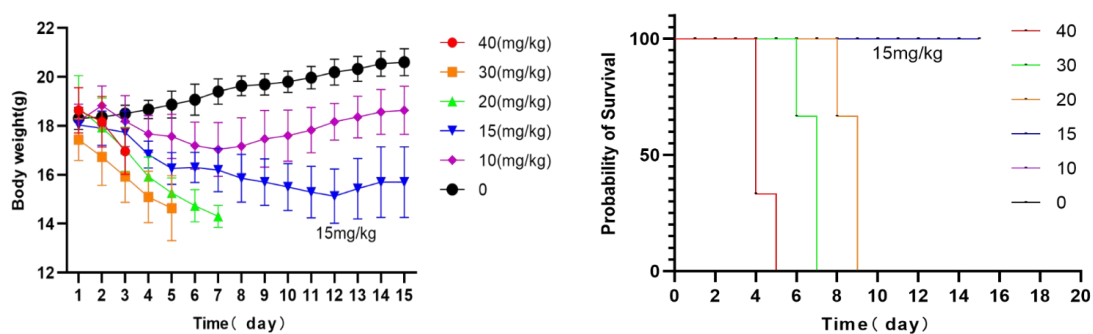


Figure S7. The blood biochemical indexes in the control group and the DOX groups (n = 3). Data are presented as the mean \pm SD. * $p < 0.05$; ** $p < 0.01$; *** $p < 0.001$; **** $p < 0.0001$.

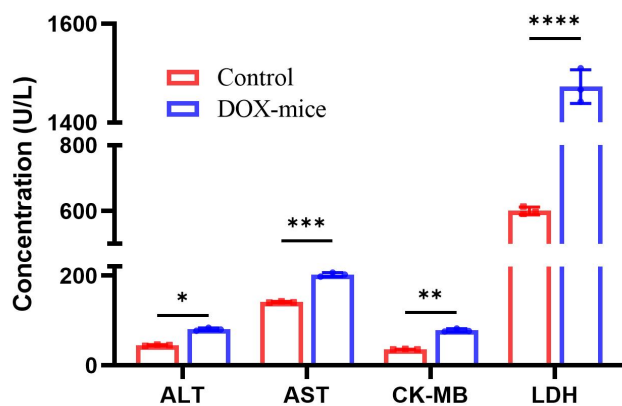


Figure S8. Tumor volume changes of mice in different treatment groups (n = 3). Data are presented as the mean \pm SD.

