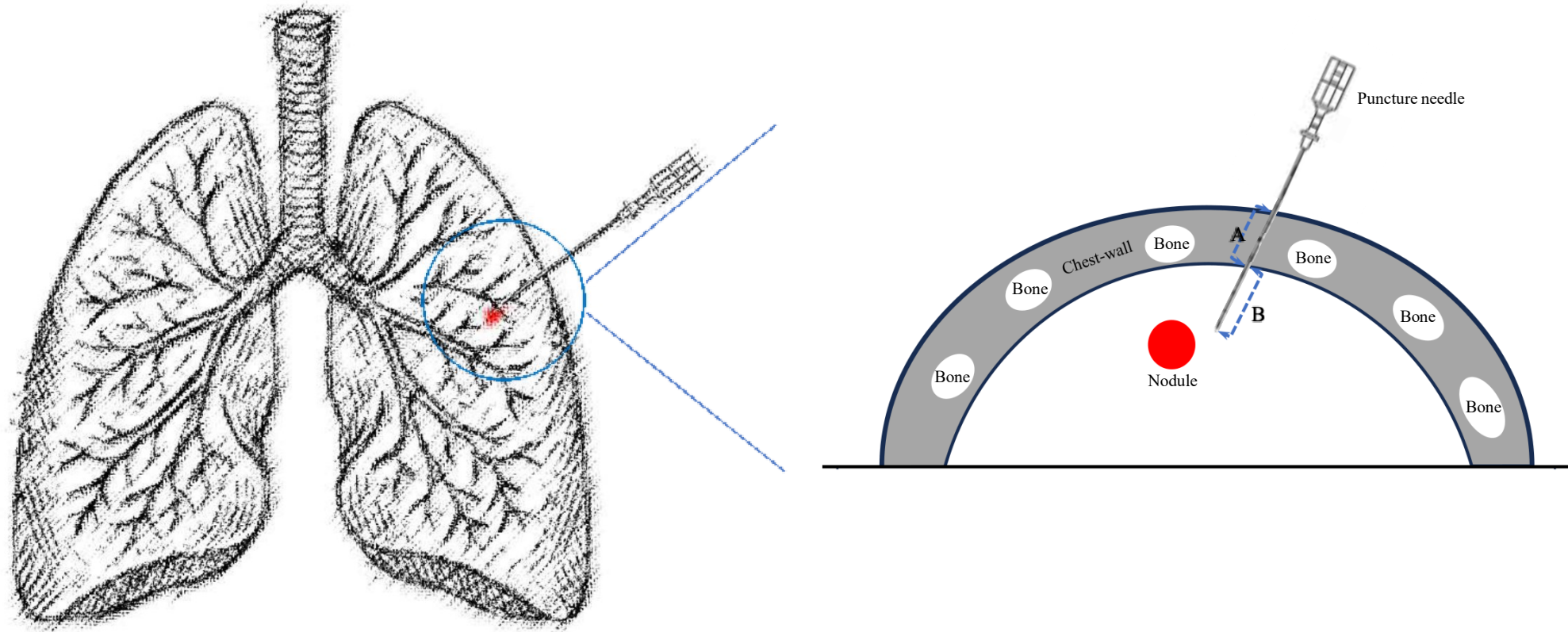
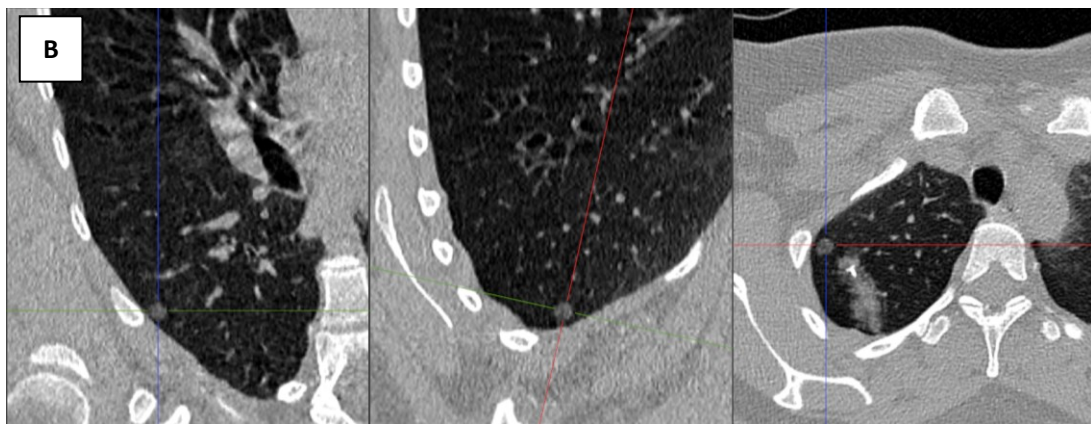
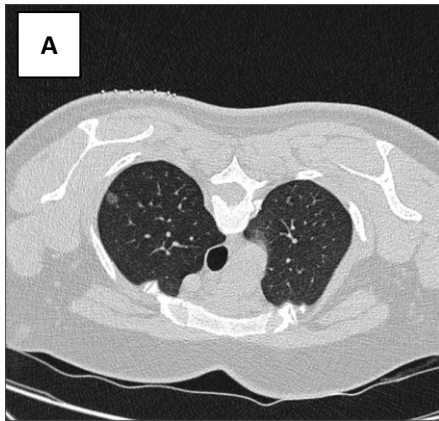


Supplementary Figure 1 Schematic diagram of CT-guided percutaneous lung nodule localization



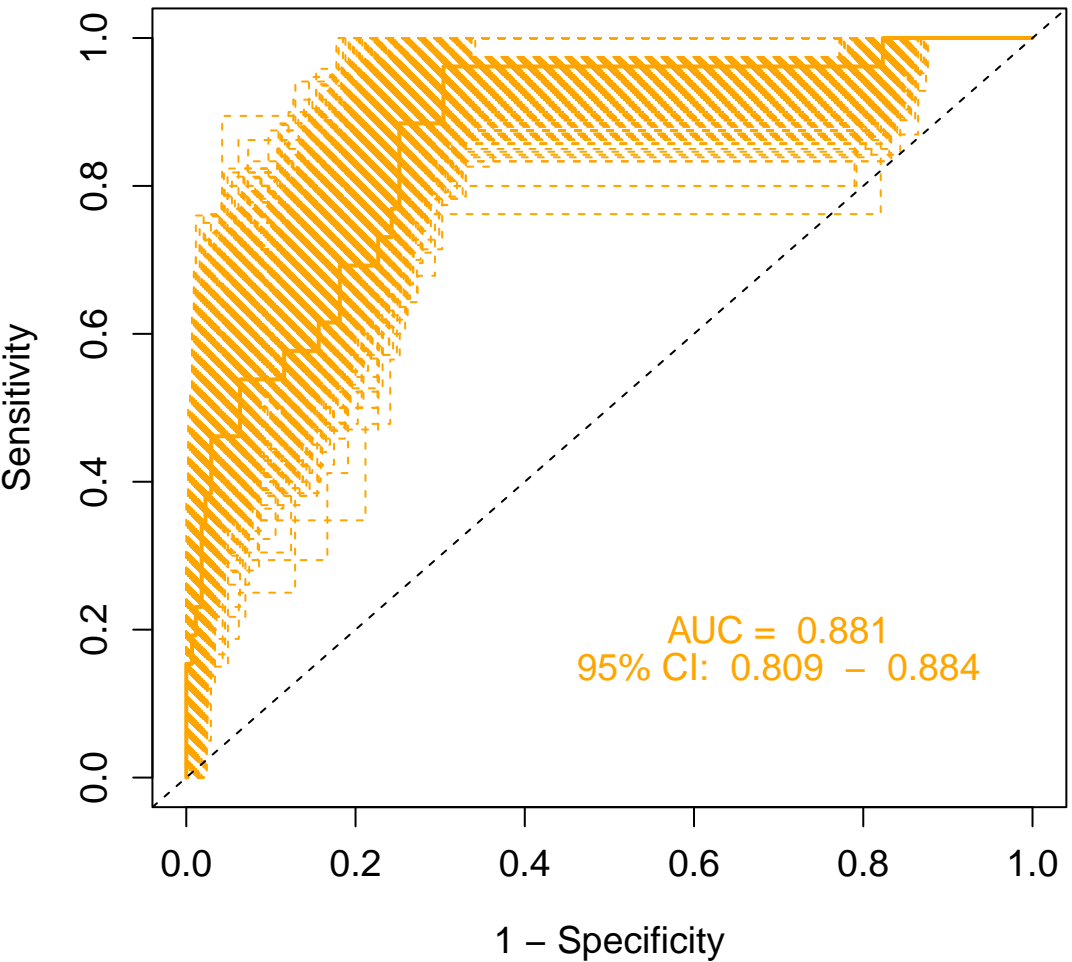
**Supplementary Figure 2**



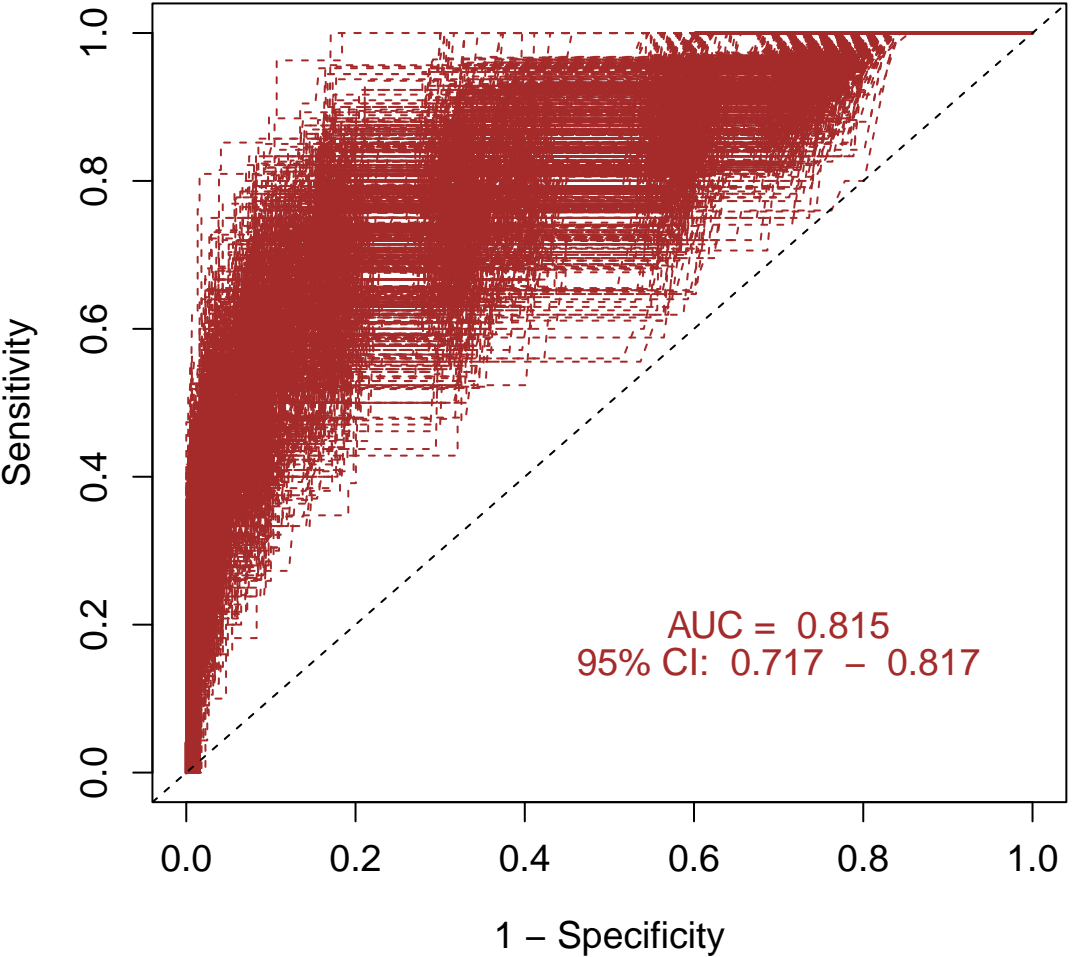
**(A):** Preoperative CT image (prior to lung nodule localization).

**(B):** Immediate postoperative CT image (following CT-PLNL procedure).

# Model 1 ROC (Bootstrap)



# Model 2 ROC (Bootstrap)



**Supplementary Table 1** Vital signs and treatments of PR patients, etc

Adequate anesthesia	Gender	Age(years)	Consciousness	Pupillary reflex	HR(bpm)	BP	SpO2	R(bpm)	Chest wall thickness(mm)	Last CT scan time	PR recurrence time	Time interval	Treatments
Yes	Male	51	Clear	Isoconic/Present	67	98/67	98%	20	20.34	8:05	8:05	<5min	Oxygen 2L/min, 5% GS 50ml IV Drop
Yes	Female	35	Clear	Isoconic/Present	68	101/60	92%	19	30.08	8:00	8:00	<5min	Oxygen 2L/min, 5% GS 50ml IV Drop
Yes	Female	37	Waste	Isoconic/Present	52	83/40	99%	18	21.83	7:45	8:05	>5min	Oxygen 2L/min, 5% GS 50ml IV Drop
Yes	Female	52	Clear	Isoconic/Present	69	60/42	98%	18	46.97	7:51	8:00	<5min	Oxygen 2L/min, 5% GS 50ml IV Drop
Yes	Female	58	Clear	Isoconic/Present	42	69/34	98%	16	37.67	8:51	8:51	<5min	Oxygen 2L/min, 5% GS 50ml IV Drop
Yes	Female	33	Clear	Isoconic/Present	54	67/37	100%	22	16.60	8:16	8:25	>5min	Oxygen 2L/min, 5% GS 50ml IV Drop
Yes	Female	33	Clear	Isoconic/Present	54	58/35	99%	18	36.17	8:13	8:15	<5min	Oxygen 2L/min, 5% GS 50ml IV Drop
Yes	Female	27	Clear	Isoconic/Present	57	68/39	100%	15	48.44	8:14	8:20	>5min	Oxygen 2L/min, 5% GS 50ml IV Drop
Yes	Female	35	Clear	Isoconic/Present	60	87/53	99%	18	48.48	8:24	8:30	>5min	Oxygen 2L/min, 5% GS 50ml IV Drop
Yes	Male	35	Clear	Isoconic/Present	61	75/51	98%	20	45.45	8:39	8:45	>5min	Oxygen 2L/min, 5% GS 50ml IV Drop
Yes	Male	47	Clear	Isoconic/Present	50	76/35	99%	15	34.36	8:18	8:30	>5min	Oxygen 2L/min, 5% GS 50ml IV Drop
No	Male	60	Clear	Isoconic/Present	78	161/98	98%	15	28.55	7:58	8:01	<5min	Oxygen 2L/min, 5mgDEX IV
No	Female	60	Clear	Isoconic/Present	80	70/59	90%	20	32.12	8:25	8:40	>5min	Oxygen 2L/min, 5% GS 50ml IV Drop
No	Female	40	Clear	Isoconic/Present	57	60/31	100%	16	38.78	8:25	8:30	<5min	Oxygen 2L/min, 5% GS 50ml IV Drop
No	Female	33	Clear	Isoconic/Present	52	87/52	100%	20	51.24	7:55	7:55	<5min	Oxygen 2L/min, 5% GS 50ml IV Drop
No	Female	33	Clear	Isoconic/Present	76	90/60	95%	16	39.55	8:06	8:12	>5min	Oxygen 2L/min, 5% GS 50ml IV Drop
No	Female	43	Clear	Isoconic/Present	69	69/32	95%	18	27.57	7:57	8:00	<5min	Oxygen 2L/min, 5% GS 50ml IV Drop
No	Female	37	Clear	Isoconic/Present	70	59/28	100%	18	25.99	8:19	8:25	>5min	Oxygen 2L/min, 5% GS 50ml IV Drop
No	Female	57	Clear	Isoconic/Present	46	127/104	97%	18	36.87	8:21	8:40	>5min	Oxygen 2L/min, 5% GS 50ml IV Drop
No	Female	48	Clear	Isoconic/Present	56	92/72	99%	16	44.48	8:26	8:45	>5min	Oxygen 2L/min, 5% GS 50ml IV Drop
No	Male	55	Clear	Isoconic/Present	44	54/13	98%	14	47.66	8:32	8:35	<5min	Oxygen 2L/min, 5% GS 50ml IV Drop, 5mgDEX IV
No	Female	54	Clear	Isoconic/Present	54	88/54	94%	18	31.45	8:24	8:30	>5min	Oxygen 2L/min, 5% GS 50ml IV Drop
No	Female	57	Clear	Isoconic/Present	60	110/71	99%	18	53.61	8:22	8:30	>5min	Oxygen 2L/min, 5% GS 50ml IV Drop
No	Female	56	Clear	Isoconic/Present	63	110/70	96%	20	50.60	7:56	8:05	>5min	Oxygen 2L/min, 5% GS 50ml IV Drop
No	Female	61	Clear	Isoconic/Present	60	120/80	98%	20	35.55	7:39	7:40	<5min	Oxygen 2L/min, 5% GS 50ml IV Drop

Abbreviations: PR, pleural reaction; HR, heart rate; BP, blood pressure; R, respiration; CT, Computed Tomography; GS, glucose solution; IV, intravenous injection; DEX, Dexamethasone.