

Supplemental materials

Table S1. Mean change in individual OSD symptoms in the open-label population.

	PF-LAT E / PF-LAT E (N=70)	P-LAT / PF-LAT E (N=66)
Burning/stinging/itching		
Week 12	-0.17	0.02
Month 6	-0.25	-0.15
Month 9	-0.23	-0.11
Month 15	-0.25	-0.21
Blurred/poor vision		
Week 12	-0.11	-0.06
Month 6	-0.14	-0.06
Month 9	-0.17	-0.03
Month 15	-0.18	-0.08
Dry eye		
Week 12	-0.14	-0.11
Month 6	-0.09	-0.20
Month 9	-0.19	-0.14
Month 15	-0.31	-0.21

Notes:

All patients were treated with preservative-free latanoprost (0.005%) eye drop emulsion during the open-label extension period (Week 12 through Month 15).

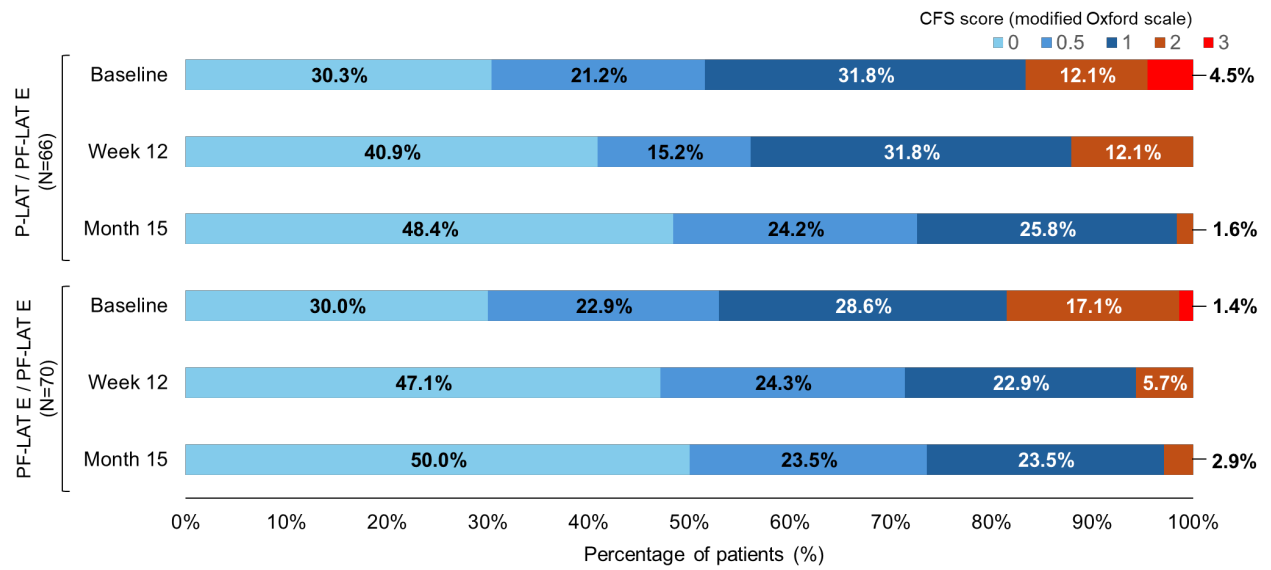
Treatment groups:

PF-LAT E / PF-LAT E: received preservative-free latanoprost (0.005%) eye drop emulsion during both the randomized (baseline through Week 12) and open-label (Week 12 through Month 15) study periods.

P-LAT / PF-LAT E: received preserved latanoprost (0.005%) during the randomized period (baseline through Week 12) and preservative-free latanoprost (0.005%) eye drop emulsion during the open-label extension period (Week 12 through Month 15).

Abbreviations: OSD, ocular surface disease; PF-LAT E, preservative-free latanoprost eye drop emulsion; P-LAT, preserved latanoprost.

Figure S1. CFS score in the open-label population



Notes:

All patients were treated with preservative-free latanoprost 0.005% eye drop emulsion during the open-label extension period (Week 12 through Month 15).

Treatment groups:

PF-LAT E / PF-LAT E: received preservative-free latanoprost 0.005% eye drop emulsion during both the randomized (baseline through Week 12) and open-label (Week 12 through Month 15) study periods.

P-LAT / PF-LAT E: received preserved latanoprost 0.005% during the randomized period (baseline through Week 12) and preservative-free latanoprost 0.005% eye drop emulsion during the open-label extension period (Week 12 through Month 15).

Abbreviations: CFS, corneal fluorescein staining; PF-LAT E, preservative-free latanoprost eye drop emulsion; P-LAT, preserved latanoprost.