

Whole Genome Sequencing of a Non-O1/O139-Group *Vibrio cholerae* Isolated from a Patient with a Bloodstream Infection

Sipei Wang¹, Shanshan Jin¹, Xiangjin Zhu¹, Yuan Li¹, Xinling Pan²

¹Department of Clinical Laboratory, Wenzhou Medical University Affiliated Dongyang Hospital, Dongyang, Zhejiang, People's Republic of China;

²Department of Biomedical Sciences Laboratory, Wenzhou Medical University Affiliated Dongyang Hospital, Dongyang, Zhejiang, People's Republic of China

Correspondence: Xinling Pan, Department of Biomedical Sciences Laboratory, Wenzhou Medical University Affiliated Dongyang Hospital, No. 60 Wuning West Road, Dongyang, Zhejiang Province, People's Republic of China, 322100, Email panfengyuwuzu@163.com

Background: Diarrhea caused by non-O1/O139-group *V. cholerae* (NOVC) tends to be mild and can be readily overlooked. In this report, a NOVC strain designated XXM was isolated from the blood of a 68-year-old male undergoing surgical treatment for a bile duct malignancy in October 2023.

Methods: XXM was identified through a matrix-assisted laser desorption/ionization time-of-flight mass spectrometry (MALDI-TOF MS). Virulence genes were detected using a *V. cholerae* *ctxA/ctxB* virulence gene dual real-time fluorescent PCR kit. AST-GN13 and AST-GN334 cards were used to test the resistance against 16 antibiotics with a Vitek2 compact system. The genomic and phylogenetic characteristics of XXM were established through whole genome sequencing (WGS).

Results: Serum agglutination tests revealed the isolate to be a non-O1/non-O139 strain. The strain was sensitive to all 16 tested antibiotics and did not carry the *ctxA/ctxB* gene. MLST analyses identified the XXM strain as ST1538. WGS analyses identified 8 classes of virulence genes with different functions. A total of 3,541 bacterial genes, including 3,482 from *V. cholerae*, were annotated using the Non-Redundant Protein Sequence (NR) database. Kyoto Encyclopedia of Genes and Genomes (KEGG) analyses annotated 32 genes including 17 key proteins involved in the *V. cholerae* biofilm pathway. Comparative analyses using the Pathogen Host Interactions Database (PHI) identified the *YbeY* gene. Evolutionary genealogy of genes: Non-supervised Orthologous Groups (eggNOG) was used to annotate 3280 genes in 21 categories. Phylogenetic analyses revealed that strain XXM was closely related to *V. cholerae* strain Man9.

Conclusion: The XXM carries multiple virulence genes, and this genomic analysis of the XXM in comparison with other NOVC strains provides important information for an improved understanding of the pathogenicity of NOVC in clinical samples.

Keywords: *Vibrio cholerae*, non-O1/O139-group, whole genome sequencing, bloodstream infection, molecular characterization

Introduction

Vibrio cholerae is the bacterial pathogen responsible for cholera. Of the over 200 *V. cholerae* serotypes recorded to date, only serogroups O1 and O139 caused global pandemics following their spread from the delta of the river Ganges.¹ Approximately 2.9 million individuals throughout the globe suffer from cholera annually, resulting in 95,000 deaths, and the vast majority of which occur in developing countries.²

V. cholerae infections can cause fulminant diarrhea attributable to the virulence genes. The *ctxA/ctxB* encodes cholera enterotoxin, which causes the extensive loss of fluids and electrolytes. TCP gene cluster encodes a toxin-coregulated pilus, which is important for the intestinal colonization of these bacteria. Non-O1 and non-O139 *V. cholerae* (NOVC) strains, however, rarely produce cholera enterotoxin. While these NOVC strains cause watery diarrhea and severe illness in some cases, they tend to cause milder infections than the typical presentation of cholera,³ and generally consist of enteric infections, including sepsis.⁴ Individuals with hematological or hepatic diseases face greater risk of NOVC infection,^{4,5} exhibiting a mortality rate of 12.1–39%.^{5,6}

In this study, a NOVC strain was isolated from a patient undergoing surgery to treat bile duct malignancy. A retrospective analysis of infection-related information was conducted for this patient, and whole genome sequencing (WGS) was employed for the molecular characterization of the isolated *V. cholerae* strain.

Materials and Methods

Strain Isolation and Antibiotic Susceptibility Testing

A 5–10 mL sample of peripheral blood was collected from the patient in a blood culture vial (bioMérieux, France). Culture positivity was recorded after 11 h 35 min, and the microbes were then further cultured on blood agar and MacConkey agar plates (Kangtai, Wenzhou), which were incubated for 24–48 h at 35°C in a 5% CO₂ incubator. The isolate was identified as *V. cholerae* through matrix-assisted laser desorption/ionization time-of-flight mass spectrometry (MALDI-TOF MS) (bioMérieux, France) testing. Further examination using O139 *V. cholerae* antiserum and Inaba and Ogawa mixed antiserum (Denka Seiken, Japan) was performed, identifying the strain as a NOVC strain (designed as XMM). Virulence genes encoded by this strain were detected with a *V. cholerae* *ctxA/ctxB* virulence gene dual real-time fluorescent PCR kit (Beijing Applied Biological Technologies, China). The resistance of this strain to 16 antibiotics (Amikacin, Amoxicillin-Clavulanic acid, Cefepime, Cefoperazone-Sulbactam, Cefoxitin, Ceftazidime, Cefuroxime, Levofloxacin, Piperacillin-Tazobactam, Tetracycline, Sulfamethoxazole-Rimethoprim, Ampicillin, Ampicillin-Sulbactam, Cefazolin, Imipenem, Gentamicin) was evaluated with the Vitek2 compact system with the AST-GN13 and AST-GN334 cards. The minimum inhibitory concentration (MIC) values for these antibiotics were obtained automatically from this system, and phenotypes were determined based on the Clinical and Laboratory Standards Institute guidelines (Performance Standards for Antimicrobial Susceptibility Testing, 33rd edition). *Escherichia coli* ATCC25922 served as the reference strain.

DNA Extraction and Genome Assembly

A HiPure Bacterial DNA Kit (Magenetec, China) was used to extract genomic DNA. The TruSeq DNA Sample Preparation Kit (Illumina, USA) and the Template Prep Kit (Pacific Biosciences, USA) were used for library preparation. WGS was performed with the Nanopore PromethION48 platform and the Illumina Novaseq platform (Personal Biotechnology Company, China). After removing adapter-containing sequences and filtering the reads using Adapter Removal⁷ and SOAPec,⁸ the filtered reads were assembled using SPAdes⁹ and A5-miseq¹⁰ for scaffold and contig construction. Data from sequencing with the Nanopore platform were assembled with Flye¹¹ and the Unicycler software.¹² All of the assembled results were then integrated to compile complete genomic sequences with the Pilon software.¹³

Whole Genome Sequencing Analyses

GeneMarkS v4.32¹⁴ was used for gene prediction, while tRNAs, rRNAs, and other ncRNAs were, respectively, identified with tRNAscan-SE,¹⁵ Barrnap (v 0.9) and Rfam.¹⁶ Genomic island predictions were made with IslandViewer4,¹⁷ while pathogenicity and antibiotic resistance-related genes were, respectively, retrieved with the VFDB (Virulence Factors of Pathogenic Bacteria) database¹⁸ and CARD (The Comprehensive Antibiotic Resistance) database.¹⁹ The virulence genes of XMM were compared with those of the reference strain RFB16 negative for *ctxA/ctxB* virulence genes (accession number: GCA_008369605.1) and two NOVC strains isolated from blood samples in China (VCHL017, accession number: GCA_022758165.1; 2352495169, accession number: GCA_029906585.1). Functional annotation was achieved via BLAST searching against the NR (Non-Redundant Protein Database),²⁰ KEGG (Kyoto Encyclopedia of Gene and Genomes),²¹ COG (Cluster of Orthologous Groups of proteins),²² Swissprot, Pathogen–Host Interactions Database (PHI), and CGview²³ databases. PubMLST (<https://pubmlst.org>) was used to establish the sequence type for the isolate. Genomic sequencing data were inputted into the UBG v3.0 software (<https://www.ezbiocloud.net/tools/ubcg>), leading to the identification of 92 core genes that were used to construct a phylogenetic tree with the maximum likelihood method (Supplementary Table 1). The sequences of XMM and other strains were uploaded to the EzBioCloud (<https://www.ezbiocloud.net/tools/ani>) to compare the level of similarity. The arrangements of the genomes of the XMM, Man9 (accession number: GCA_030295265.1), and the reference strain RFB16 strains were analyzed using Mauve version 20150226 build 10 (c) package by dividing the genome into multiple locally collinear blocks (LCBs).²⁴

Results

Case Presentation

In October 2023, a 68-year-old male patient developed a fever (maximum temperature: 39.0°C) accompanied by a headache that lasted for 10 minutes and resolved after nausea and two episodes of vomiting. This patient's medical history indicated that they had undergone laparoscopic pancreaticoduodenectomy for lower choledochal tumors 7 months ago. Laboratory findings showed elevated procalcitonin (4.59 ng/mL), neutrophil percentage (92.2%), glutamic oxaloacetic transaminase level (112 U/L), and glutamic pyruvic transaminase level (57 U/L). However, his hypersensitive C-reactive protein levels and white blood cell counts were in the normal range. Cefoperazone-sulbactam (2.00 g) intravenous infusion was administered every 8 hours on the first day. On the third day after admission, gram-negative bacilli were detected in laboratory blood cultures and identified as *V. cholerae* (designated as strain XXM), with a Non-O1/O139 serotype; no *ctxA/ctxB* virulence genes were detected. This strain was sensitive to 16 tested antibiotic agents (Table 1). Therefore, the patient's treatment regimen was modified on day 4 to ceftriaxone (2.00 g) intravenous infusion every 24 hours. After 4 days, his temperature had returned to the normal range, his headache symptoms had abated, and his procalcitonin levels had decreased.

Genome Assembly and Gene Predictions

The genome of this *V. cholerae* isolate consisted of two chromosomes, respectively, measuring 2,955,919 bp and 1,090,283 bp, with respective GC content of 47.90% and 46.85%. These two chromosomes, respectively, harbored 2575 and 1012 open reading frames. In total, 104 tRNAs, 31 rRNAs, and 47 other ncRNAs were identified across the genome. The final assembled genome was submitted to the NCBI database (<https://www.ncbi.nlm.nih.gov/>) with the accession number: CP166972-CP166973.

Virulence and Antibiotic-Resistance Genes in the Genome

Using a threshold 90–100% sequence identity, 8 classes of virulence genes with different functions were identified. Comparison with the reference strain RFB16 with negative *ctxA/ctxB* virulence genes and two NOVC strains isolated from blood samples in China, showed an absence of the *gfpA* and *rtxA* virulence genes in the isolate (Table 2). When comparative analyses were performed at a 80–100% identity level, 6 resistance genes were detected, 4 of which were distributed across 3 gene islands (Table 3).

Table 1 Antimicrobial Susceptibility Testing for *V. cholerae* Strain XXM

Antimicrobial agents	MIC(μ g/mL)
Amikacin	≤ 2
Amoxicillin-Clavulanic acid	4
Cefepime	≤ 0.12
Cefoperazone-Sulbactam	≤ 8
Cefoxitin	≤ 4
Ceftazidime	≤ 0.12
Cefuroxime	≤ 1
Levofloxacin	≤ 0.12
Piperacillin-Tazobactam	≤ 4
Tetracycline	≤ 0.5
Sulfamethoxazole-Rimethoprim	≤ 20
Ampicillin	≤ 2
Ampicillin-Sulbactam	≤ 2
Cefazolin	≤ 4
Imipenem	4
Gentamicin	≤ 1

Table 2 Distribution of Virulence Genes in Different Strains

VF Function	Common VF genes	Additional Genes in XXM	Additional Genes in RFB16	Additional Genes in VCHL017	Additional Genes in 2352495169
Effector delivery system	<i>clpB/vasG epsC epsD epsE epsF epsG epsH epsI epsJ epsK epsL epsM epsN icmF/vasK vasA vasB vasC vasD vasE vasF vasH vasI vasJ vasL VC0395_RS15455 VC0395_RS15460 VCA0109 vgrG-2 vipA/mglA vipB/mglB</i>	<i>hcp-1 hcp-2 vgrG-3</i>	<i>hcp-2 VCA0122 vcrD2 vgrG-3</i>	<i>hcp-1</i>	<i>hcp-1 vgrG-3</i>
Motility	<i>cheA cheB cheR cheV cheW cheY cheZ flaA flaB flaC flaD flaE flaG flal fleN/flhG fleR/flrC fleS/flrB flgA flgB flgC flgD flgE flgF flgG flgH flgl flgj flgK flgL flgM flgN flgO flgP flgT flhA flhB flhF flhA flhD flhE flhF flhG flhH flhI flhJ flhK flhL flhM flhN flhO flhP flhQ flhR flhS flrA motA motB motX motY</i>				
Adherence	<i>mshB mshC mshD mshE mshF mshG mshH mshI mshJ mshK mshL mshM mshN pilB pilC pilD/vcpD mshB</i>		<i>gbpA</i>	<i>gbpA</i>	<i>gbpA</i>
biofilm	<i>cqsA luxS VC_RS04610 VC_RS04620 VC_RS09110 vpsH vpsI vpsJ vpsP vpsQ vpsU</i>			<i>vpsC vpsD vpsE vpsF vpsG</i>	
Exotoxin	<i>rtxB rtxC rtxD hlyA tlh</i>		<i>rtxA</i>	<i>rtxA</i>	<i>rtxA</i>
Exoenzyme	<i>hap/vvp</i>		<i>nanH</i>	<i>nanH</i>	
Immune modulation	<i>cpsA cpsB cpsC cpsD cpsF</i>	<i>wbfY wbjD/wecB wecC</i>		<i>wbjD/wecB wecC</i>	<i>wbjD/wecB wecC</i>
Nutritional/Metabolic factor	<i>hasR hutR irgA vctA vctC vctD vctG vctP vibA vibB vibC vibE vibF vibH viuA viuB viuC viuD viuG viuP</i>	<i>vibD</i>	<i>vibD</i>	<i>hutA vibD</i>	<i>hutA</i>

Table 3 Prediction of Antibiotic-Resistance Genes Encoded by *V. cholerae* Strain XXM

Gene	Describe	Identity	Gene Island
<i>EF-Tu</i>	Elfamycin resistant	100	chr1 IS11
<i>StrA</i>	Resistant to Streptomycin	94.35	chr1 IS10
<i>rpoB</i>	Resistance to rifampicin	85.32	chr1 IS10
<i>CRP</i>	Antibiotic efflux	95.24	/
<i>parE</i>	Resistance to fluoroquinolones	80.73	/
<i>qnrVC4</i>	Resistance to quinolone	100	chr2 IS1

Protein Feature Analyses

NR annotation was achieved for 3581 bacterial genes, including 3481 *V. cholerae* genes (Supplementary Table 2). KEGG analyses led to the annotation of 32 genes associated with the *V. cholerae* biofilm formation pathway (Supplementary Table 3). PHI comparisons at a 90–100% identity level revealed 31 reduced virulence genes, 2 unaffected virulence genes (*hns CspV*), and 1 instance of loss of pathogenicity for *V. cholerae* gene (*YbeY*) (Table 4). eggNOG annotation was achieved for 3280 genes in 21 categories (Figure 1), and the results were arranged into a genomospheric map (Figure 2).

MLST Analyses and Genomic Comparisons

MLST analyses identified the XXM strain as ST1538, while the phylogenetic tree identified Man9 as the strain most closely related to XXM (Figure 3), with an Average Nucleotide Identity (ANI) of 98.26%. The XXM strain and RFB16 were largely identical (ANI 98.32%), with some blocks of rearrangement and insertion (chr2: 214,426–237,502, 250,579–292,117, 347,501–369,039), but no instances of inversion. Both rearrangements and inversions were evident in the Man9 strain relative to the RFB16 (ANI 98.27%) (Figure 4).

Table 4 Annotation of Strain XXM Genes Using a PHI Analysis

Function class	Gene Name
Reduced virulence	<i>tatA tatB tatC spoT AphA leuO relA VcpD VC2340 fadD LonA gntR vexD VC1348 VprA VC1295 relV aphB LuxO ToxR oadB vexF CsrA Hfq edd gntK gntU eda vexB hlyA VCA0895 VCA0931 ohrR</i>
Unaffected pathogenicity	<i>hns CspV</i>
Loss pathogenicity	<i>YbeY</i>

Discussion

In summary, a NOVC strain was herein isolated from the blood of an older male with a history of malignancy. Hematologic and hepatic diseases have previously been identified as risk factors for NOVC infection.²⁵ This strain exhibited good sensitivity to β -lactam and quinolone antibiotics during phenotypic testing, although WGS revealed the presence of the quinolone resistance genes *parE* and *qnrVC4*. This is consistent with results from a prior report in which an isolate exhibited phenotypic sensitivity to quinolones despite the detection of the *qnrVC4* and *parE* genes.²⁶ This may be attributable to the fact that certain *parE* mutations are not linked to quinolone resistance.²⁷

The *ctxA/ctxB* genes and the TCP gene cluster are absent in strain XXM, consistent with the fact that the patient only experienced mild gastrointestinal symptoms. However, various virulence factors were detected in this strain. Effector delivery systems, including the type II and IV secretion systems, are key virulence factors that can support nutrient acquisition, the formation of biofilms, and the enhancement of strain pathogenicity.^{28,29} Motility can enhance virulence by improving the odds of *V. cholerae* binding to the intestinal mucosa, with nonmotile strains exhibiting impaired virulence linked to a reduced capacity for adsorption to the surfaces of mouse intestinal segments in prior reports.³⁰ Other strains reported to cause bloodstream infections^{5,31,32} contained the cytotoxic *rtxBCD* and *hlyA* genes, all of which are RTX (Repeats in ToXin) toxins,³³ that function by the penetration and permeabilization of host cell membranes, resulting in infection.³⁴ The *gbpA* gene was not detected in this strain compared with the reference strain RFB16 and two blood

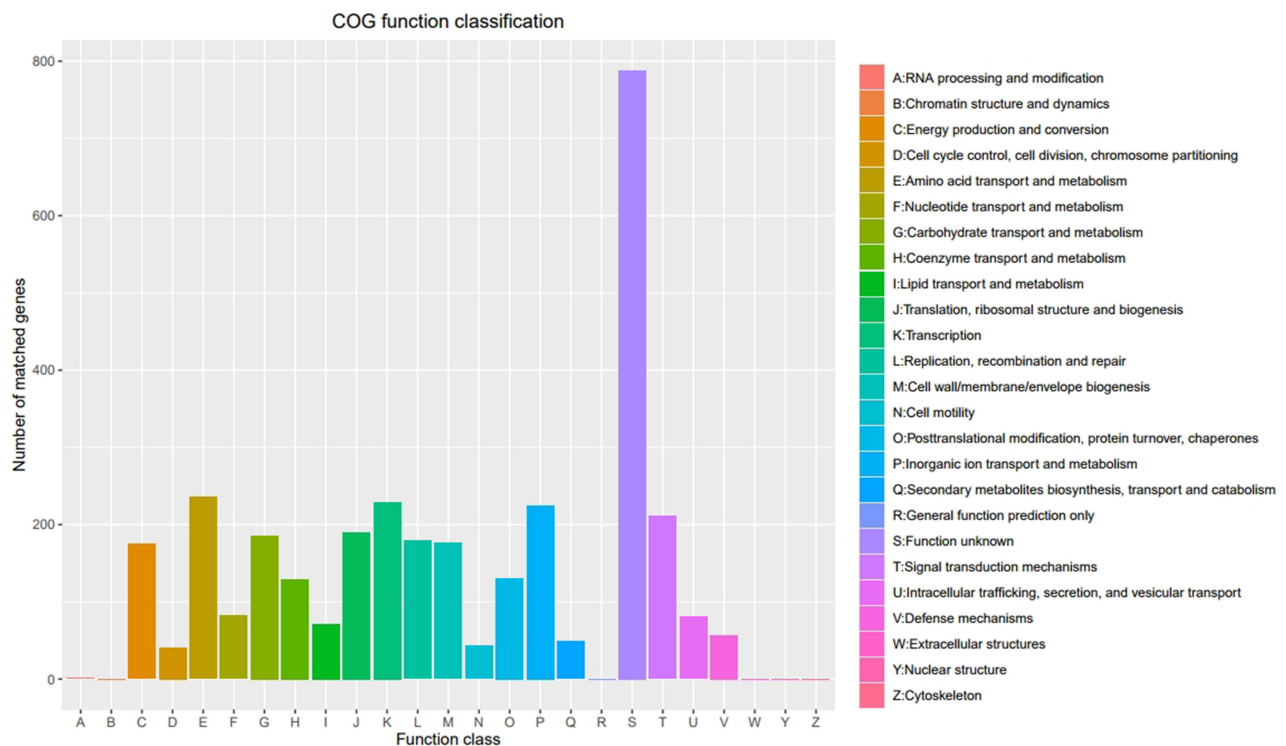


Figure 1 Cluster of orthologous groups (COG) functional annotation of *V. cholerae* XXM genes. Annotated entries are shown on the abscissa with the number of matched genes on the ordinate. The color coding of COG functions is shown in the legend.

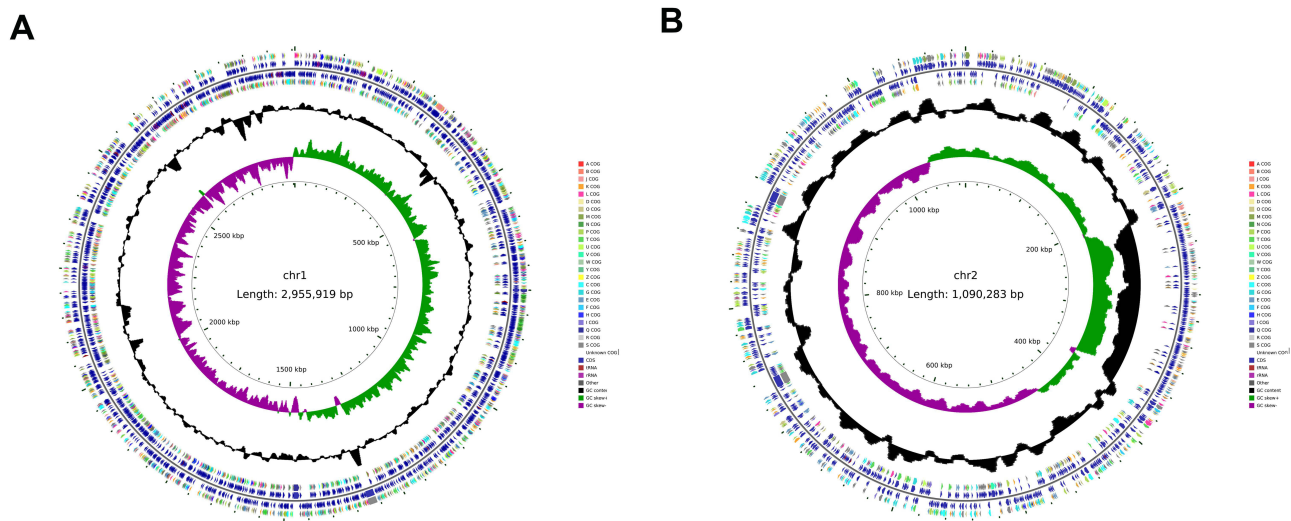


Figure 2 Circular genome map of *V. cholerae* XXM. **(A)** Larger chromosome; **(B)** Smaller chromosomes. From inside to outside, the first circle represents the scale, the second circle indicates the GC Skew (green values indicate >0; purple values <0), the third ring represents the GC content (the outer black ring indicates greater than the average, while the inner black ring indicates less than the average), the fourth and seventh circles represent the COG to which each CDS belongs, and the fifth and sixth circles represent the positions of CDS (blue), tRNAs (red), and rRNAs (purple) in the genome.

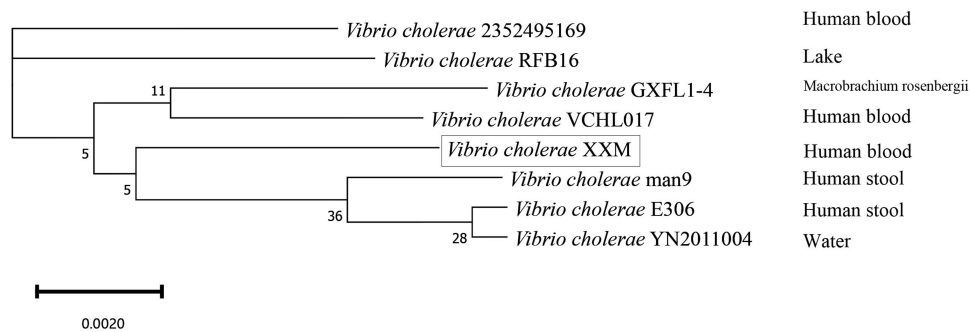


Figure 3 Phylogenetic tree of 8 *V. cholerae* strains. The source from which the strains were isolated is indicated on the right, and rectangular one was for this study. The NCBI accession numbers of the *V. cholerae* strains are provided in [Supplementary Table 1](#).

isolates. Studies have shown that the *gfpA* gene encoding an important virulence factor linked to bacterial colonization identified pandemic isolates, is not ubiquitously present in *V. cholerae* strains.³⁵ Besides, 33 genes associated with *V. cholerae* biofilm formation were identified in this strain. Bacterial accumulation in biofilms can support persistent infections and limit the efficacy of antimicrobial drugs.^{36,37} Managing such cases thus requires adequate doses of standard antibiotics together with the timely replacement of the needle to mitigate the potential for biofilm formation as a result of bacterial residues. PHI annotations revealed 31 genes with reduced virulence consistent with a reduction in their activity or consequent loss of function linked to an overall decrease in bacterial pathogenicity, the *YbeY* gene encodes an endoribonuclease involved in ribosome biosynthesis. Deleting this gene can have an adverse effect on the growth and replication of bacteria,³⁸ and it may thus represent a promising new target for drug development efforts.

MLST identified the XXM strain as ST1538, which has previously been isolated in Thailand.³⁹ The source of this strain may have been as a food or water contaminant, given that *V. cholerae* can be found in the freshwater rivers of Zhejiang Province.⁴⁰ These environmentally derived strains generally exhibit an absence of any apparent selection pressure, with MLST typing revealing a diverse array of bacterial community characteristics, and no prevalent types.⁴⁰ ST167 and ST173 were previously identified as the major epidemic types of non-pandemic O1 *V. cholerae* in Zhejiang Province, China.³⁹ Phylogenetic tree analyses identified the Man9 strain first isolated in Sasebo City, Nagasaki Prefecture in 1946 from an

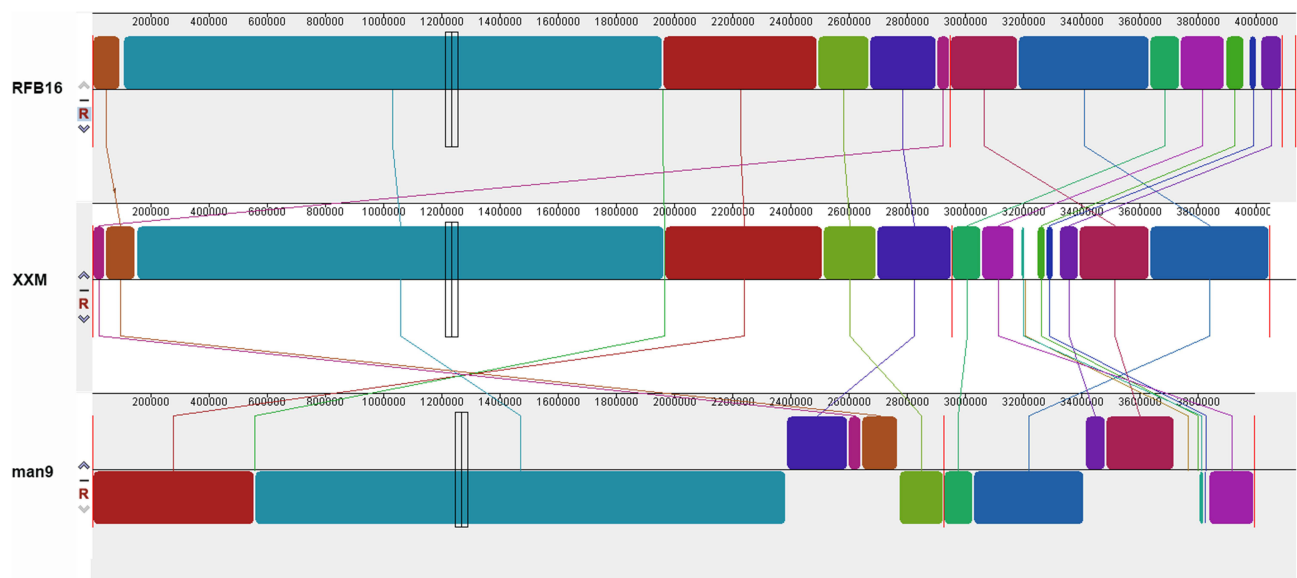


Figure 4 Mauve alignment of VCHL017 with five other *V. cholerae* genomes. The Mauve software divides the genome into several locally collinear blocks, with homologous regions of the genome colored identically and connected by lines.

individual who had returned from northeastern China as the closest relative to the XXM strain. China suffered severe outbreaks of cholera in 1940 and 1946, and it is possible that the Man9 lineage may have been the causative agent.⁴¹

Limitations

The patient was hospitalized without a stool culture test to determine whether *Vibrio cholerae* invaded the bloodstream from the intestine or other ways of invading the bloodstream.

Conclusion

The *V. cholerae* XXM strain was isolated from blood samples collected from patients after tumor resection surgery. While the strain was observed to carry a variety of virulence factors, it did not contain the *ctxA/ctxB* genes. Phylogenetic analysis showed that the strain was most closely related to a cholera strain prevalent in China in the 1940s. Although NOVC is easy to ignore in clinical practice, it is important to monitor NOVC strains isolated from sites other than the digestive tract, as these strains have the potential to exert their pathogenic effects through multiple virulence factors. The whole genome analysis of NOVC strains will help to understand the virulence characteristics and evolution of strains, and also provide help for clinical treatment.

Ethics Approval

Informed consent to participate in this case study and to publish the findings was obtained from the patient. This study and disclosure of patient clinical data were approved by Dongyang People's Hospital Ethics Committee (No. 2024-YX-231). The analysis used routinely collected anonymized programmatic data.

Disclosure

The authors report no conflicts of interest in this work.

References

1. Clemens JD, Nair GB, Ahmed T, Qadri F, Holmgren J. Cholera. *Lancet*. 2017;390(10101):1539–1549. doi:10.1016/S0140-6736(17)30559-7
2. Uwishema O, Okereke M, Onyeaka H, et al. Threats and outbreaks of cholera in Africa amidst COVID-19 pandemic: a double burden on Africa's health systems. *Trop Med Health*. 2021;49(1):93. doi:10.1186/s41182-021-00376-2

3. Dutta D, Chowdhury G, Pazhani GP, et al. *Vibrio cholerae* non-O1, non-O139 serogroups and cholera-like diarrhea, Kolkata, India. *Emerg Infect Dis*. 2013;19(3):464–467. doi:10.3201/eid1903.121156
4. Rodriguez JY, Duarte C, Rodriguez GJ, et al. Bacteremia by non-O1/non-O139 *Vibrio cholerae*: case description and literature review. *Biomedica*. 2023;43(3):323–329. doi:10.7705/biomedica.6716
5. Li X, Wu Y, Sun X, et al. Non-O1/non-O139 *Vibrio cholerae* bacteraemia in mainland China from 2005 to 2019: clinical, epidemiological and genetic characteristics. *Epidemiol Infect*. 2020;148:e186. doi:10.1017/S0950268820001545
6. Chen YT, Tang HJ, Chao CM, Lai CC, Zhou D. Clinical manifestations of non-O1 *Vibrio cholerae* infections. *PLoS One*. 2015;10(1):e0116904. doi:10.1371/journal.pone.0116904
7. Schubert M, Lindgreen S, Orlando L. AdapterRemoval v2: rapid adapter trimming, identification, and read merging. *BMC Res Notes*. 2016;9:88. doi:10.1186/s13104-016-1900-2
8. Luo R, Liu B, Xie Y, et al. SOAPdenovo2: an empirically improved memory-efficient short-read de novo assembler. *Gigascience*. 2012;1(1):18. doi:10.1186/2047-217X-1-18
9. Bankevich A, Nurk S, Antipov D, et al. SPAdes: a new genome assembly algorithm and its applications to single-cell sequencing. *J Comput Biol*. 2012;19(5):455–477. doi:10.1089/cmb.2012.0021
10. Coil D, Jospin G, Darling AE. A5-miseq: an updated pipeline to assemble microbial genomes from Illumina MiSeq data. *Bioinformatics*. 2015;31(4):587–589. doi:10.1093/bioinformatics/btu661
11. Kolmogorov M, Yuan J, Lin Y, Pevzner PA. Assembly of long, error-prone reads using repeat graphs. *Nat Biotechnol*. 2019;37(5):540–546. doi:10.1038/s41587-019-0072-8
12. Wick RR, Judd LM, Gorrie CL, Holt KE, Phillippy AM. Unicycler: resolving bacterial genome assemblies from short and long sequencing reads. *PLoS Comput Biol*. 2017;13(6):e1005595. doi:10.1371/journal.pcbi.1005595
13. Walker BJ, Abeel T, Shea T, et al. Pilon: an integrated tool for comprehensive microbial variant detection and genome assembly improvement. *PLoS One*. 2014;9(11):e112963. doi:10.1371/journal.pone.0112963
14. Besemer J, Lomsadze A, Borodovsky M. GeneMarkS: a self-training method for prediction of gene starts in microbial genomes. Implications for finding sequence motifs in regulatory regions. *Nucleic Acids Res*. 2001;29(12):2607–2618. doi:10.1093/nar/29.12.2607
15. Lowe TM, Eddy SR. tRNAscan-SE: a program for improved detection of transfer RNA genes in genomic sequence. *Nucleic Acids Res*. 1997;25(5):955–964. doi:10.1093/nar/25.5.955
16. Kalvari I, Argasinska J, Quinones-Olvera N, et al. Rfam 13.0: shifting to a genome-centric resource for non-coding RNA families. *Nucleic Acids Res*. 2018;46(D1):D335–D342. doi:10.1093/nar/gkx1038
17. Bertelli C, Laird MR, Williams KP, et al. IslandViewer 4: expanded prediction of genomic islands for larger-scale datasets. *Nucleic Acids Res*. 2017;45(W1):W30–W35. doi:10.1093/nar/gkx343
18. Chen L, Zheng D, Liu B, Yang J, Jin Q. VFDB 2016: hierarchical and refined dataset for big data analysis--10 years on. *Nucleic Acids Res*. 2016;44(D1):D694–697. doi:10.1093/nar/gkv1239
19. McArthur AG, Wagglechner N, Nizam F, et al. The comprehensive antibiotic resistance database. *Antimicrob Agents Chemother*. 2013;57(7):3348–3357. doi:10.1128/AAC.00419-13
20. Buchfink B, Xie C, Huson DH. Fast and sensitive protein alignment using DIAMOND. *Nat Methods*. 2015;12(1):59–60. doi:10.1038/nmeth.3176
21. Moriya Y, Itoh M, Okuda S, Yoshizawa AC, Kanehisa M. KAAS: an automatic genome annotation and pathway reconstruction server. *Nucleic Acids Res*. 2007;35:W182–185. doi:10.1093/nar/gkm321
22. Galperin MY, Makarova KS, Wolf YI, Koonin EV. Expanded microbial genome coverage and improved protein family annotation in the COG database. *Nucleic Acids Res*. 2015;43:D261–269. doi:10.1093/nar/gku1223
23. Stothard P, Wishart DS. Circular genome visualization and exploration using CGView. *Bioinformatics*. 2005;21(4):537–539. doi:10.1093/bioinformatics/bti054
24. Darling AC, Mau B, Blattner FR, Perna NT. Mauve: multiple alignment of conserved genomic sequence with rearrangements. *Genome Res*. 2004;14(7):1394–1403. doi:10.1101/gr.2289704
25. Zhang X, Lu Y, Qian H, et al. Non-O1, Non-O139 *Vibrio cholerae* (NOVC) Bacteremia: case Report and Literature Review, 2015-2019. *Infect Drug Resist*. 2020;13:1009–1016. doi:10.2147/IDR.S245806
26. Xu X, Qian J, Ke Q, Wang Y, Liu Y, Bao D. Bacteremia Caused by a Serotype Ob5 *Vibrio cholerae* Strain in a Cirrhotic Patient in China. *Microbiol Spectr*. 2023;11(4):e0205423. doi:10.1128/spectrum.02054-23
27. Liu Q, Yin L, Lv C, et al. Parallel Evolution to Elucidate the Contributions of PA0625 and parE to Ciprofloxacin Sensitivity in *Pseudomonas aeruginosa*. *Microorganisms*. 2022;11(1). doi:10.3390/microorganisms11010013
28. Coulthurst S. The Type VI secretion system: a versatile bacterial weapon. *Microbiology*. 2019;165(5):503–515. doi:10.1099/mic.0.000789
29. Naskar S, Hohl M, Tassinari M, Low HH. The structure and mechanism of the bacterial type II secretion system. *Mol Microbiol*. 2021;115(3):412–424. doi:10.1111/mmi.14664
30. Guentzel MN, Berry LJ. Motility as a virulence factor for *Vibrio cholerae*. *Infect Immun*. 1975;11(5):890–897. doi:10.1128/iai.11.5.890-897.1975
31. Ding Y, Hao J, Zeng Z, Jinbo L. Identification and genomic analysis of a *Vibrio cholerae* strain isolated from a patient with bloodstream infection. *Heliyon*. 2022;8(11):e11572. doi:10.1016/j.heliyon.2022.e11572
32. Tang J, Li S, Zhang M, Li F, Tang Y, Yang F. Whole Genome Analysis of a Non-O1, Non-O139 *Vibrio cholerae* Detected from Human Blood in China. *Infect Drug Resist*. 2023;16:5453–5461. doi:10.2147/IDR.S420095
33. Benz R. RTX-Toxins. *Toxins (Basel)*. 2020;12(6). doi:10.3390/toxins12060359
34. Filipi K, Rahman WU, Osickova A, Osicka R. Kingella kingae RtxA Cytotoxin in the Context of Other RTX Toxins. *Microorganisms*. 2022;10(3). doi:10.3390/microorganisms10030518
35. Fennell TG, Blackwell GA, Thomson NR, Dorman MJ. gbpA and chiA genes are not uniformly distributed amongst diverse *Vibrio cholerae*. *Microb Genom*. 2021;7(6). doi:10.1099/mgen.0.000594
36. Stewart PS. Biophysics of biofilm infection. *Pathog Dis*. 2014;70(3):212–218. doi:10.1111/2049-632X.12118
37. Venkatesan N, Perumal G, Doble M. Bacterial resistance in biofilm-associated bacteria. *Future Microbiol*. 2015;10(11):1743–1750. doi:10.2217/fmb.15.69

38. Leskinen K, Varjosalo M, Skurnik M. Absence of YbeY RNase compromises the growth and enhances the virulence plasmid gene expression of *Yersinia enterocolitica* O:3. *Microbiology*. 2015;161(Pt 2):285–299. doi:10.1099/mic.0.083097-0
39. Luo Y, Payne M, Kaur S, Octavia S, Jiang J, Lan R. Emergence and genomic insights of non-pandemic O1 *Vibrio cholerae* in Zhejiang, China. *Microbiol Spectr*. 2023;11(6):e0261523. doi:10.1128/spectrum.02615-23
40. Luo Y, Wang H, Liang J, et al. Population Structure and Multidrug Resistance of Non-O1/Non-O139 *Vibrio cholerae* in Freshwater Rivers in Zhejiang, China. *Microb Ecol*. 2021;82(2):319–333. doi:10.1007/s00248-020-01645-z
41. Kuninobu KI, Takemura T, Takizawa Y, Hasebe F, Yamashiro T. Whole-genome analysis of a *Vibrio cholerae* O1 biotype classical strain isolated in 1946 in Sasebo city, Nagasaki prefecture, from a returnee from the northeast part of China. *Trop Med Health*. 2023;51(1):5. doi:10.1186/s41182-023-00500-4

Infection and Drug Resistance

Dovepress

Publish your work in this journal

Infection and Drug Resistance is an international, peer-reviewed open-access journal that focuses on the optimal treatment of infection (bacterial, fungal and viral) and the development and institution of preventive strategies to minimize the development and spread of resistance. The journal is specifically concerned with the epidemiology of antibiotic resistance and the mechanisms of resistance development and diffusion in both hospitals and the community. The manuscript management system is completely online and includes a very quick and fair peer-review system, which is all easy to use. Visit <http://www.dovepress.com/testimonials.php> to read real quotes from published authors.

Submit your manuscript here: <https://www.dovepress.com/infection-and-drug-resistance-journal>