

# Bioinformatics Integrative Analysis of Circadian Rhythms Effects on Atopic Dermatitis and Dendritic Cells

Nan Sun<sup>1</sup>, Dan Dai<sup>1</sup>, Shihang Deng<sup>2</sup>, Xun Cai<sup>3</sup>, Ping Song<sup>1</sup>

<sup>1</sup>Department of Dermatology, Guang'anmen Hospital, China Academy of Chinese Medical Sciences, Beijing, 100053, People's Republic of China; <sup>2</sup>Department of Dermatology, Shenzhen Bao'an Authentic TCM Therapy Hospital, Shenzhen, 518126, People's Republic of China; <sup>3</sup>Department of Dermatology, The Fifth People's Hospital of Suzhou, Suzhou, 215131, People's Republic of China

Correspondence: Nan Sun; Ping Song, Department of Dermatology, Guang'anmen Hospital, China Academy of Chinese Medical Sciences, Beijing, 100053, People's Republic of China, Email dr-sue@foxmail.com; songping@vip.126.com

**Background:** Atopic dermatitis (AD) is an allergic inflammatory skin disease caused by aberrant and over-reactive immune response. Although circadian rhythm disruption is implicated in multiple immunoinflammatory conditions, including AD, the mechanisms at the molecular level underlying AD and circadian rhythms remain elusive.

**Methods:** Bulk and single-cell RNA-sequencing data of AD patients were acquired from the Gene Expression Omnibus, including GSE121212, GSE120721, and GSE153760 datasets. A single-sample gene set enrichment analysis was performed to estimate circadian rhythm gene expression levels. A differential expression analysis was utilized to identify the key candidate genes in AD. CIBERSORT was used to quantify the proportions of immune cells, and the R package “Seurat” was utilized to investigate single-cell RNA-sequencing data.

**Results:** Circadian rhythm gene expression levels were lower in AD skin samples than in normal skin samples. Dendritic cells were significantly upregulated and negatively correlated with circadian rhythm gene expression levels in AD patients. Compared with circadian rhythm-related genes in the control samples, *ARNTL2*, *NOCT*, and *RORC* were differentially expressed in AD; *ARNTL2* and *NOCT* were significantly upregulated, whereas *RORC* was significantly downregulated in AD. *ARNTL2*, *NOCT*, and *RORC* also showed robust abilities to diagnose AD. We validated that the abundance of the dendritic cell was positively correlated with the *ARNTL2* and *NOCT* expression levels using bulk RNA-sequencing data of the GSE121212 and single-cell RNA-sequencing data of the GSE153760. Moreover, the functional enrichment analysis showed that the IL-17 and NF-κB signaling pathways, Th1 and Th2 cell differentiations, and primary immunodeficiency, were enriched in AD patients.

**Conclusion:** The findings of this study suggested that the circadian rhythm is involved in the progression of AD, and *RNTL2*, *NOCT*, and *RORC* as well as dendritic cells are differentially expressed in AD. These findings could be used to introduce diagnostic and chronotherapeutic modalities for AD.

**Keywords:** atopic dermatitis, circadian rhythms, dendritic cells, *ARNTL2*, *NOCT*, *RORC*

## Introduction

Atopic dermatitis (AD) is a chronic inflammatory skin disease that affects approximately 20% of the global population.<sup>1</sup> It manifests as dry skin and severe nocturnal pruritus,<sup>2</sup> affecting sleep continuity and quality.<sup>3</sup> AD also deteriorates the patients' quality of life and is currently posing a heavy social burden.<sup>4</sup> Its molecular pathogenetic mechanism, which remains poorly understood, involves complex interactions among genetic, environmental, and immunological factors. The main factors causing disease development include skin barrier dysfunction, immune dysregulation, and microbiology.<sup>5,6</sup> AD is associated with circadian mechanisms, and aberrations in the circadian rhythm homeostasis may play a role in its pathogenesis.<sup>7</sup>

The circadian rhythm is a 24-h endogenous timing oscillating system that regulates various biological functions, including cell proliferation and metabolism and immune cell functions.<sup>8,9</sup> Circadian rhythm disturbances are usually associated with an increased risk for cancer progression and poor outcomes, indicating a tumor-suppressive function of the circadian rhythm homeostasis. In addition, the circadian rhythm plays a role in the tumor immune microenvironment.<sup>10–12</sup> Although circadian rhythm has been widely investigated in the field of cancer in recent decades, its effect on AD has rarely been explored. Circadian rhythm comprises a central circadian rhythm, located in the suprachiasmatic nucleus of the hypothalamus, and peripheral circadian rhythm, which is synchronized with the central rhythm but can also modulate locally on its own.<sup>3,13</sup> Some physiological functions of the cutaneous organs, such as hydration, transepidermal water loss (TEWL), sebum levels, capillary blood flow, temperature, and surface pH, also exhibit circadian rhythm patterning,<sup>14</sup> which are also the physiological basis of some pruritus skin diseases aggravated at night like AD, urticaria, psoriasis, and eczema. Summarizing the current evidence, compared to healthy people, skin barrier impairment (poorer hydration, lower sebum levels, and higher TEWL), higher nocturnal cutaneous blood flow, immune cell and cytokines dysfunction and melatonin, cortisol secretion changes exacerbate pruritus and disrupt sleep in AD patients, which cause the vicious itch/cycle and are closely related to circadian rhythm disturbances.<sup>3,7</sup> However, the specific molecular mechanisms underlying circadian rhythm involvement in AD pathogenesis remain unclear.

This study aimed to clarify the relationship between circadian rhythm and AD and explore potential biomarkers in the etiology of AD by comprehensively analyzing bulk and single-cell RNA-sequencing data from the GSE121212<sup>15,16</sup> (see [Table S1](#)), GSE120721<sup>17,18</sup> (see [Table S2](#)) and GSE153760<sup>19,20</sup> (see [Table S3](#)) datasets.

## Materials and Methods

### Public Datasets

Bulk and single-cell RNA-sequencing data from AD patients were downloaded from the Gene Expression Omnibus (GEO), including GSE121212, GSE120721, and GSE153760 datasets.

### Differential Expression Analysis

Differentially expressed genes (DEGs) were calculated using the R package “edgeR”. “EdgeR” provides a procedure to normalize the data, filter under-expressed genes, and implement a series of statistical methods including empirical Bayes estimation, exact tests, generalized linear models, and quasi-likelihood tests to calculate DEGs. The selection criteria for DEGs were  $|\log_2\text{FC}| > 1$  and  $p < 0.05$ .

### Profiling of Immune Cells

Immune cells were computed using the computational algorithm CIBERSORT,<sup>21</sup> which allows the precise calculation of immune cell proportions using bulk RNA-sequencing data.<sup>22</sup> The efficacy of CIBERSORT was confirmed by wet experiments.

### Circadian Rhythm Gene Expression Levels

The circadian rhythm gene expression levels were estimated using single-sample gene set enrichment analysis (ssGSEA).<sup>23</sup> ssGSEA is a non-parametric, unsupervised approach for estimating the relative levels of a gene list. The specific parameters were set as follows:  $\text{kcdf} = \text{“Gaussian”}$ ,  $\text{tau} = 0.25$ , and  $\text{abs.ranking} = \text{TRUE}$ .

### Characterizations of Biological Function and Signaling Pathway

Biological function and signaling pathway were analyzed using the R package “clusterProfiler” (version: 3.18.1),<sup>24</sup> which provides a series of approaches to investigate the biological function and signaling pathway in patients. Functional annotation included Gene Ontology (GO) analysis and Kyoto Encyclopedia of Genes and Genomes (KEGG) pathways. We also performed a gene set enrichment analysis (GSEA) using “clusterProfiler”. GSEA can identify signaling pathways that are missed in the GO and KEGG analyses. The important parameters included the Benjamini-Hochberg

procedure for  $p$ -value adjustment, a cutoff  $p$ -value of 0.05, a cutoff  $q$ -value of 0.2, an nperm of 1000, a minGSSize of 10, and a maxGSSize of 500.

## Statistics Analysis

All statistical analyses were performed using R software (version 4.0.1). According to the homogeneity of variance and distribution of data, the independent-samples,  $t$ -test or Wilcoxon signed rank test was selected. Pearson's correlation coefficient was used to compute the correlation between two continuous variables. A  $p$ -value  $< 0.05$  was considered statistically significant.

## Results

### Association Between Circadian Rhythms and AD

Circadian rhythm disruption has been widely reported to involve in comprehensive biological processes, including immune cell function, cell division and cycle, and metabolism.<sup>8,9</sup> Thus, we wondered whether the circadian rhythm was associated with AD. To identify the relationship between circadian rhythms and AD, we compared circadian rhythm gene expression levels between lesional skin (AD group) and site-matched non-lesional skin (control group) samples from 21 AD patients in the GSE121212 and found that the circadian rhythm gene expression levels were significantly lower in lesional samples than in non-lesional samples ( $p < 0.05$ ; [Figure 1A](#)) (see [Tables S4](#) and [S5](#)). Specifically, the circadian rhythm gene expression levels refer to the overall expression levels of the panel of circadian rhythm-related genes, and was quantified using the ssGSEA algorithm. Furthermore, we compared circadian rhythm gene expression levels between lesional skin samples from patients with AD and matched normal skin from healthy volunteers, and observed that the circadian rhythm gene expression levels were indeed decreased in lesional samples than in normal skin samples ( $p < 0.05$ ; [Figure 1B](#)).

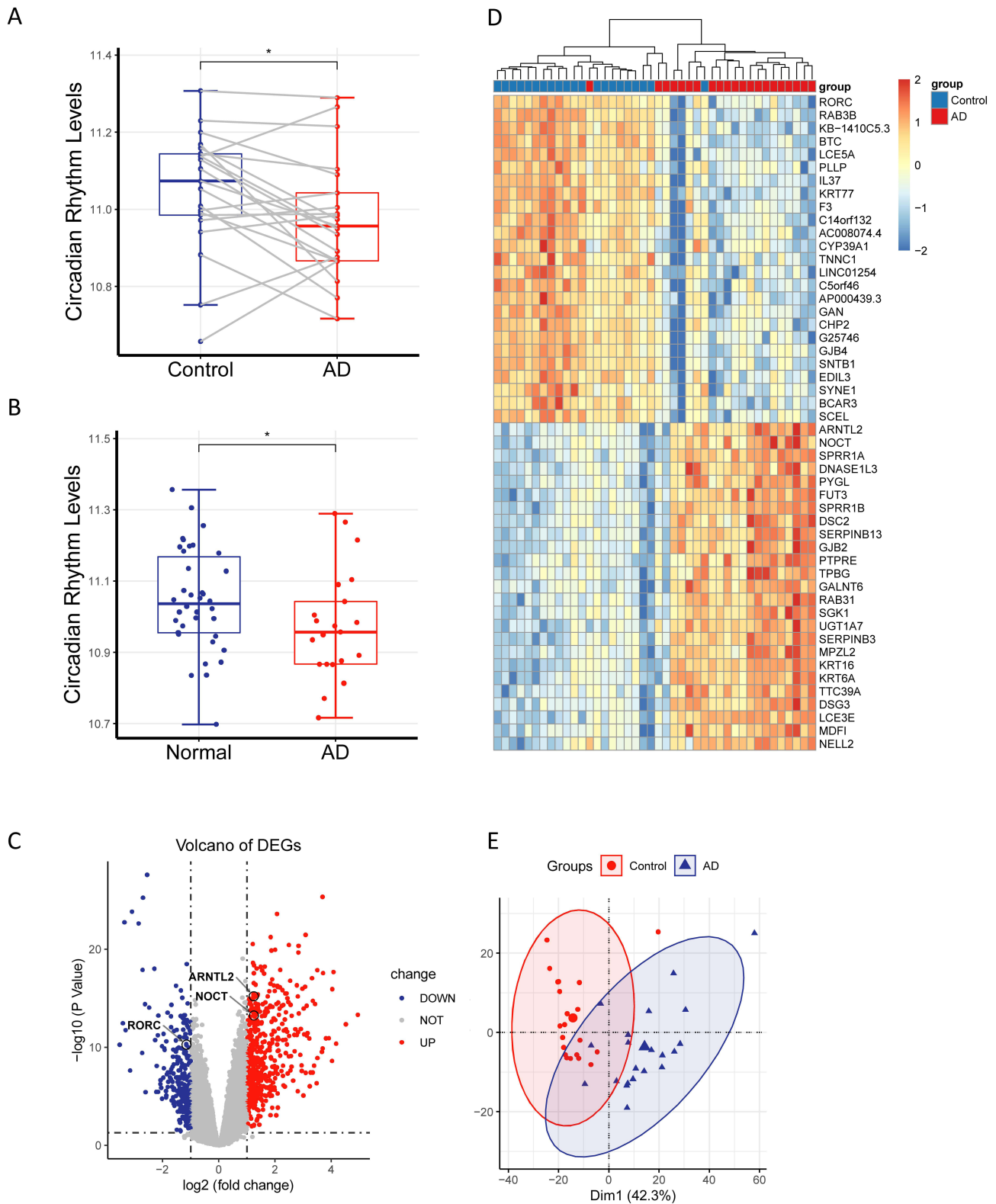
To identify potential key genes involved in AD development, we conducted a differential expression analysis between the control and AD group from the GSE121212 dataset and acquired 828 DEGs, including 516 upregulated and 312 downregulated genes ( $|\log_2\text{FC}| > 1$ ,  $p < 0.05$ ; [Figure 1C](#)). Notably, we observed that three circadian genes were significantly expressed in AD. Among them, Aryl hydrocarbon receptor nuclear translocator like 2 (*ARNTL2*) and nocturnin (*NOCT*) were upregulated, whereas retinoid-related orphan receptor C (*RORC*) was downregulated in lesional skin of AD. To test whether a distinct expression mode existed between the control and AD group, we carried out a heatmap analysis and principle component analysis (PCA). Both of them showed distinct expression patterns in the control and AD groups ([Figure 1D](#) and [E](#)).

### Characterization of Differentially Enriched Signaling Pathways in AD

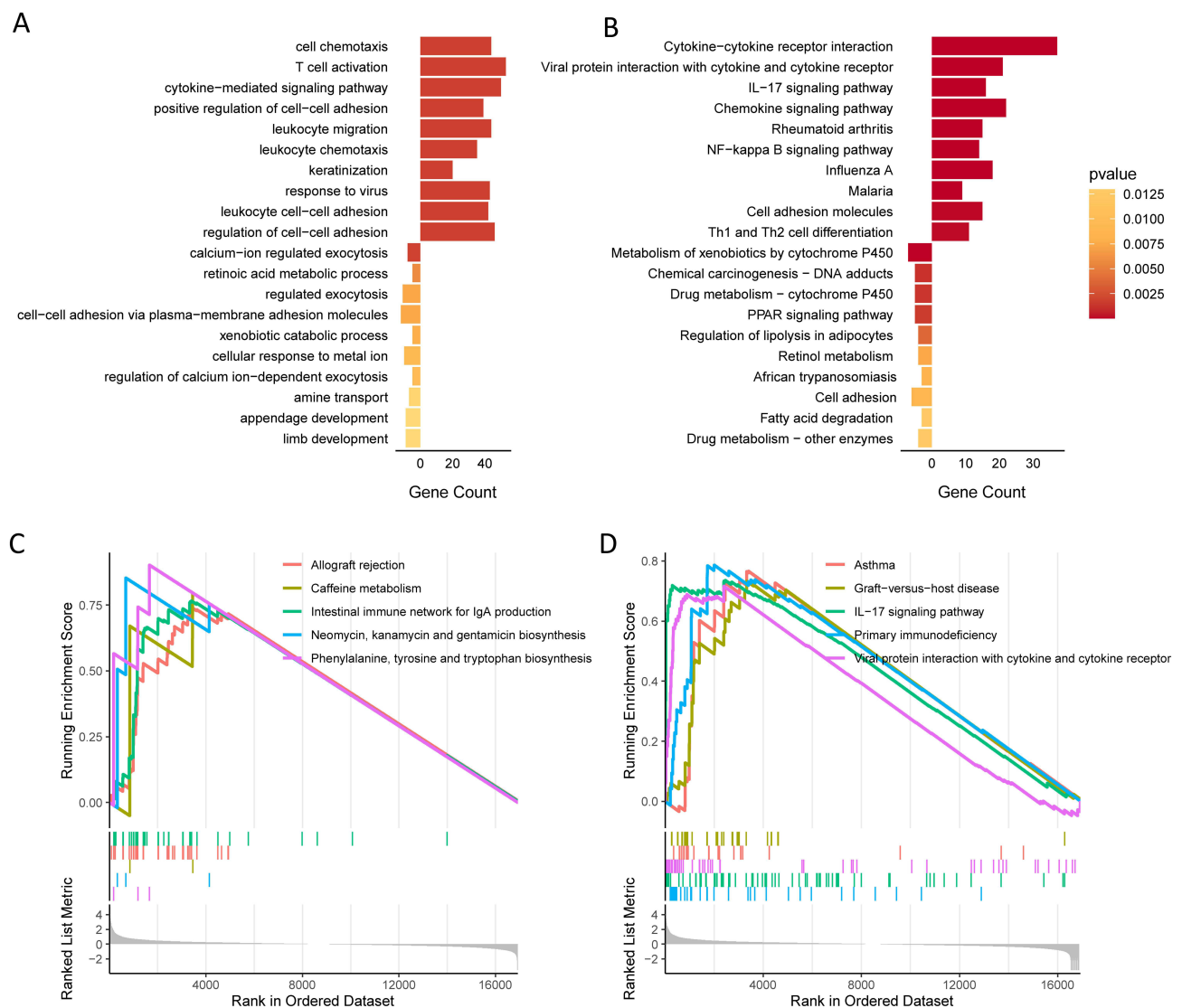
Since previous results showed a distinct expression pattern in AD, we wondered to profile the signaling pathways enriched in the development of AD by performing GO and KEGG pathway enrichment analysis for 516 upregulated genes and 312 downregulated genes between the control and AD groups. The top 10 enriched biological functions were cell chemotaxis, T cell activation, cytokine-mediated signaling pathways, positive regulation of cell-cell adhesion, and leukocyte migration ([Figure 2A](#)). Consistently, the top 10 upregulated signaling pathways comprised cytokine-cytokine receptor interaction; IL-17, chemokine, and NF- $\kappa$ B signaling pathways, and Th1 and Th2 cell differentiations ([Figure 2B](#)). GSEA demonstrated that allograft rejection, graft-versus-host disease, IL-17 signaling pathway, and primary immunodeficiency were enriched ([Figure 2C](#) and [D](#)), suggesting that AD is an autoimmune condition.

### Profiling of Immune Microenvironment of AD

Since the results of characterization of differentially enriched signaling pathways indicated that immunity disorders occurred in AD, we analyzed changes in the abundance of immune cells between the control and AD samples using RNA-sequencing data from the GSE121212 dataset (see [Table S6](#)). We estimated the expression values of 22 subsets of immune cells, deleted the subsets of cells with low expression values in both groups, and retained 7 subsets of cells with high expression values that may have potential biological significance for further analysis. The results showed that only



**Figure 1** Association between circadian rhythm and atopic dermatitis. **(A)** The circadian rhythm gene expression levels are significantly higher in the non-lesional samples than in the lesional samples. **(B)** The circadian rhythm gene expression levels are higher in the normal samples than in the lesional samples. **(C)** The volcano plot shows 828 differentially expressed genes between the control and atopic dermatitis groups, including 516 upregulated and 312 downregulated genes ( $|\log_2FC| > 1, p < 0.05$ ). **(D)** The heatmap analysis shows different expression modes between the control and atopic dermatitis groups. **(E)** The principal component analysis shows different expression modes between the control and atopic dermatitis groups. \* $p < 0.05$ .



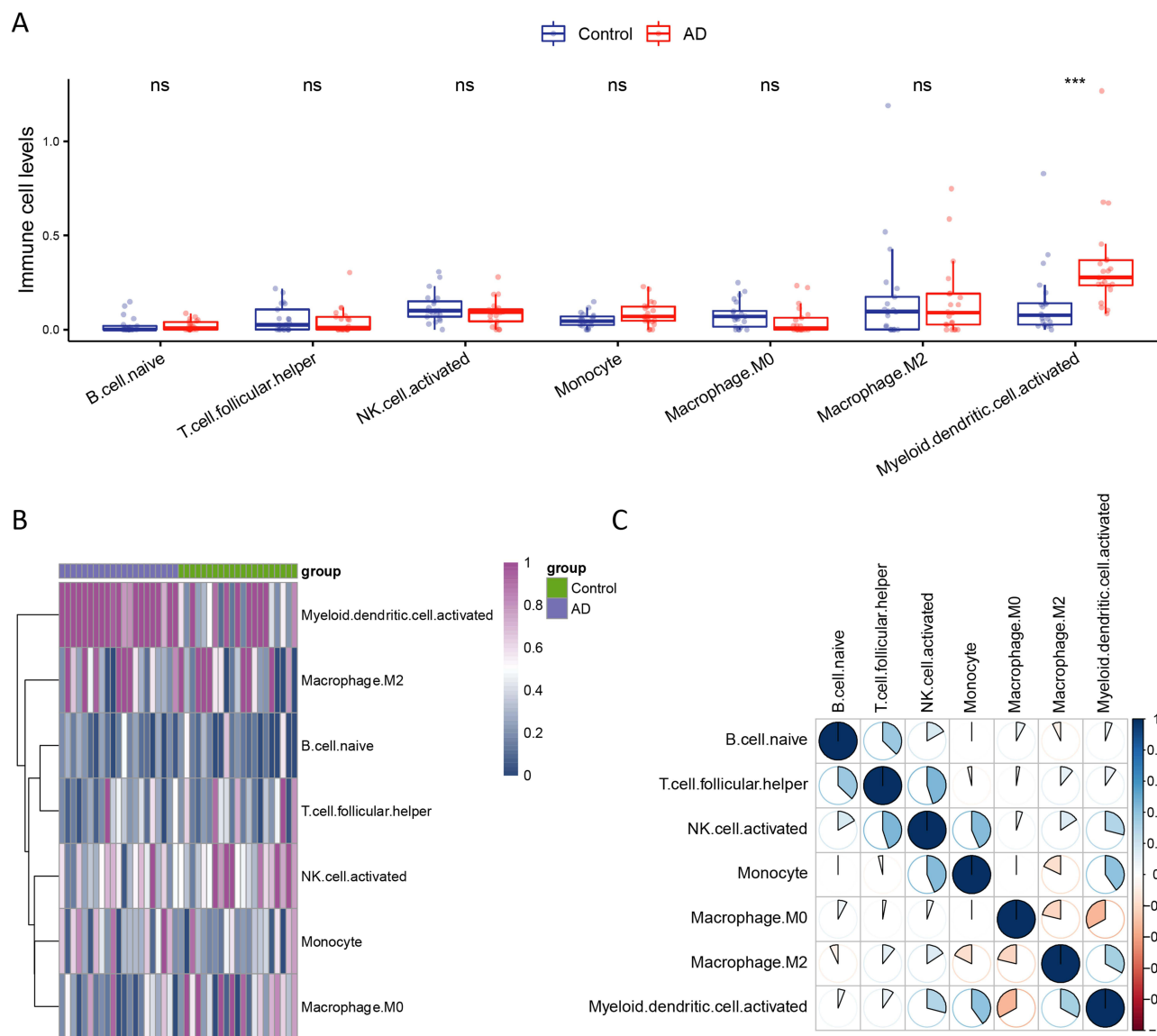
**Figure 2** Characterization of differentially enriched signaling pathways in atopic dermatitis. **(A)** Top 10 overexpressed and downregulated biological functions in atopic dermatitis samples. **(B)** Top 10 overexpressed and downregulated signaling pathways in atopic dermatitis samples. **(C and D)** Top 10 overexpressed signaling pathways generated by the gene set enrichment analysis.

myeloid dendritic cells were significantly upregulated in the AD samples compared with in the control samples ( $p < 0.001$ , Figure 3A). The heatmap also showed different expression patterns in dendritic cells between the control and AD groups (Figure 3B). The correlation analysis showed that dendritic cells were positively correlated with monocytes and NK cells (Figure 3C). Collectively, our results revealed that myeloid dendritic cells were abnormally upregulated in AD.

## Validation of Three Key Genes in an External Cohort

In the previous step, we revealed that the dendritic cell was aberrantly overexpressed in AD, and we first wondered to identify its relationship with circadian rhythm gene expression levels. As we expected, the results showed that dendritic cells were negatively correlated with circadian rhythm gene expression levels ( $R = -0.4$ ,  $p = 0.0092$ ; Figure 4A). Next, we assessed the association of the three key genes with dendritic cells, and found that *ARNTL2* and *NOCT* were critically positively correlated with dendritic cells ( $R = 0.83$  and  $R = 0.68$ , respectively; Figure 4B and C), whereas *RORC* was negatively associated with dendritic cells ( $R = -0.44$ ; Figure 4D).

Further, we analyzed the *ARNTL2*, *NOCT*, and *RORC* expression levels in the GSE121212 and GSE120721 datasets, respectively. Surprisingly, the expression levels of *ARNTL2*, *NOCT*, and *RORC* were differently expressed in the boxplot



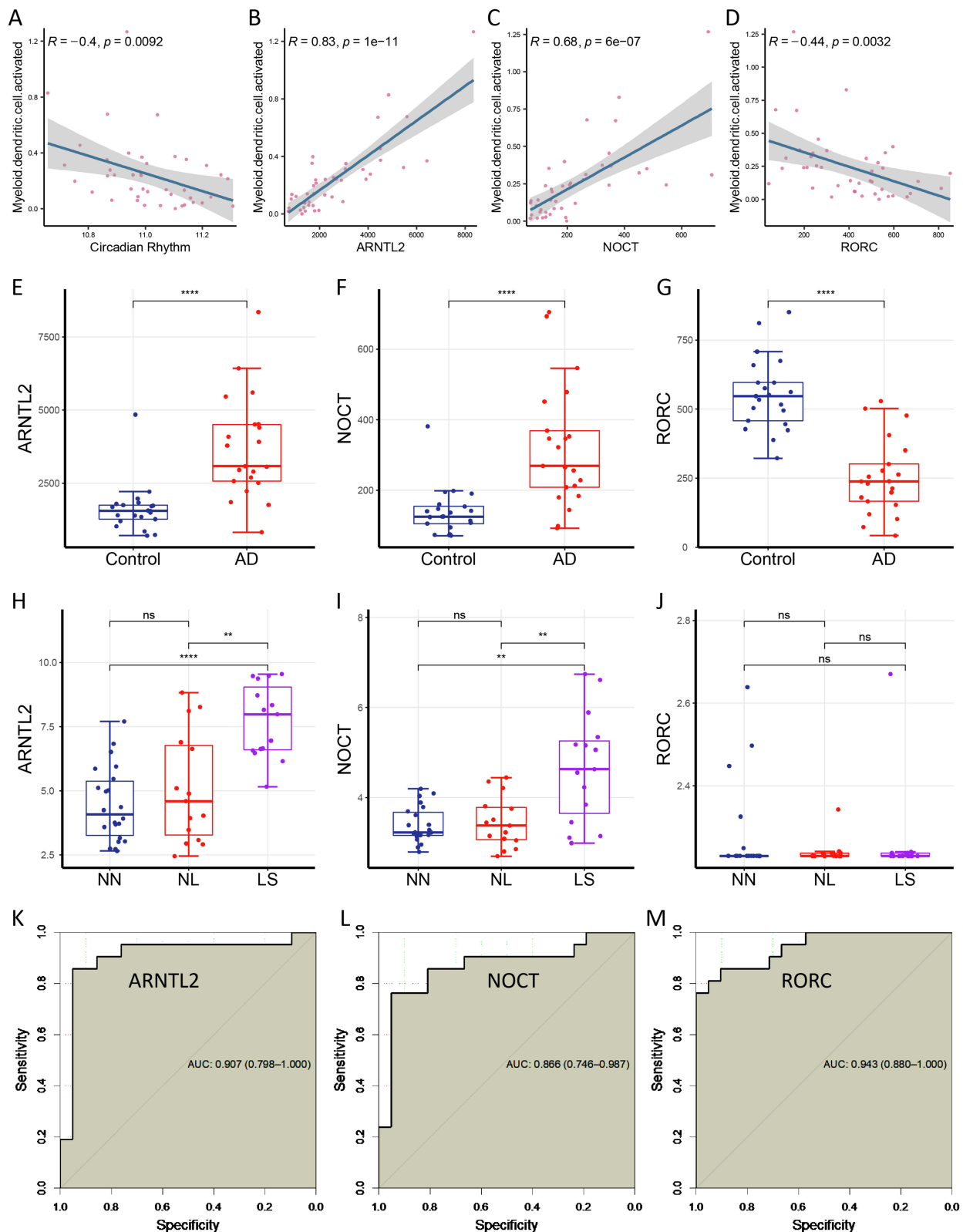
**Figure 3** Profiling of immune microenvironment of atopic dermatitis. **(A)** Comparison of the proportion of immune cells between the control and atopic dermatitis samples. **(B)** The heatmap shows different expression patterns in the dendritic cells between the control and atopic dermatitis groups. **(C)** The correlation analysis shows that the dendritic cells are positively correlated with the monocyte and natural killer cells.  $***p < 0.001$ . **Abbreviation:** ns, not significance.

(Figure 4E–G). Besides, *ARNTL2* and *NOCT* expression levels elevated as the AD severity increased (Figure 4H–I), although *RORC* expression levels did not change in the GSE120721dataset (Figure 4J).

We further assessed the predictive abilities of the three key genes for the AD diagnosis using a receiver operating characteristic (ROC) curve. Impressively, three genes all displayed robust predictive abilities in ROC curve, with areas under the curve of 0.907, 0.866, and 0.943, respectively (Figure 4K–M).

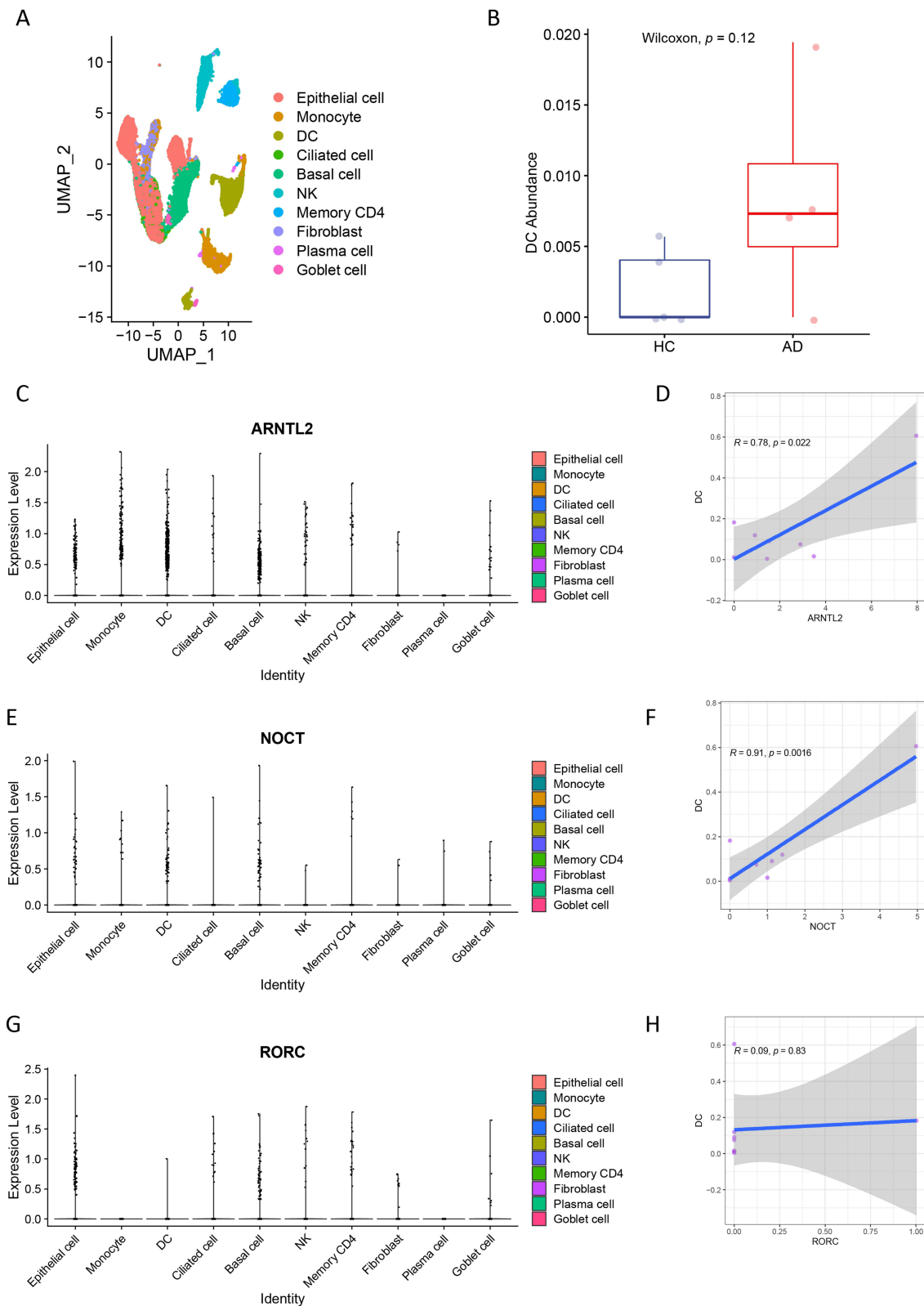
## Validation of the Relationship Between *ARNTL2*, *NOCT*, and *RORC* and the Dendritic Cells Using Single-Cell RNA-Sequencing Data

To repeatedly validate the association of three key genes with dendritic cells, we investigated their relationships using single-cell RNA-sequencing data of four paired of AD and matched healthy control (HC) samples from the GSE153760 dataset. We clustered 16,435 cells into 10 types of cells, including epithelial cells, monocytes, dendritic cells, ciliated cells, basal cells, NK cells, memory CD4 cells, fibroblast, plasma cells, and goblet cells (Figure 5A). Dendritic cells were increased in patients with AD, although not significantly ( $p = 0.12$ ; Figure 5B), compared with that in healthy controls.



**Figure 4** Validation of three key genes in an external cohort. **(A)** Dendritic cells are negatively correlated with the circadian rhythm levels ( $R = -0.4, p = 0.0092$ ). **(B)** *ARNTL2* expression levels are positively correlated with dendritic cells ( $R = 0.83, p = 1e-11$ ). **(C)** *NOCT* expression levels are positively correlated with the dendritic cells ( $R = 0.68, p = 6e-07$ ). **(D)** *RORC* expression levels are negatively correlated with dendritic cells ( $R = -0.44, p = 0.0032$ ). **(E and F)** *ARNTL2* and *NOCT* expression levels are significantly upregulated in atopic dermatitis group. **(G)** *RORC* expression levels are significantly downregulated in atopic dermatitis group. **(H and I)** *ARNTL2* and *NOCT* expression levels are positively correlated with the severity of atopic dermatitis. **(J)** *RORC* expression levels are unchanged in the GSE120721 database. **(K–M)** The receiver operating characteristic curve shows robust predictive abilities of *ARNTL2*, *NOCT*, and *RORC* genes, with areas under the curve of 0.907, 0.866, and 0.943, respectively. \*\* $p < 0.01$ ; \*\*\* $p < 0.0001$ .

**Abbreviations:** ns, not significance; AUC, area under the curve; NN, normal tissue; NL, non-lesional atopic dermatitis; LS, lesional atopic dermatitis.



**Figure 5** Validation of the relationship of the three key genes with dendritic cells using single-cell RNA-sequencing data. **(A)** 16,435 cells from 8 samples are clustered into 10 types of cells. **(B)** Dendritic cells shows an increased tendency in atopic dermatitis than in healthy controls. **(C–F)** *ARNTL2* and *NOCT* expression levels are significantly correlated with the abundance of dendritic cells. **(G and H)** *RORC* expression levels are not associated with the dendritic cells.

Finally, we sought to validate the relationships between three key genes and dendritic cells. Consistent with previous findings generated from bulk RNA-sequencing data, the *ARNTL2* and *NOCT* expression levels were significantly correlated with the abundance of dendritic cells (Figure 5C–F), whereas *RORC* expression levels were not (Figure 5G and H).

## Discussion

This study aimed to clarify the relationship between circadian rhythms and AD and explore potential biomarkers in the etiology of AD. Subsequently, we revealed the association of circadian rhythms with atopic dermatitis and identified three circadian rhythm-related genes, *ARNTL2*, *NOCT*, and *RORC*, involved in the pathogenesis of AD. Moreover, dendritic cells were significantly elevated in AD and positively correlated with *ARNTL2* and *NOCT*, suggesting their roles in the pathogenesis of AD. These results provide insights into the establishment of circadian rhythm-oriented therapies for AD.

Circadian rhythm disruption has been proposed to be implicated in multiple inflammatory conditions.<sup>25–28</sup> Herein, we revealed and verified its effects on AD and correlation with the immune system. The circadian rhythm regulates the immune system, and 8% of macrophages exert their role in a rhythmic manner, exerting a considerable regulatory effect on the immune system.<sup>28</sup> Moreover, circadian rhythm-related genes can regulate the secretion of small molecules, such as IL-6,<sup>28</sup> TNF- $\alpha$ ,<sup>29</sup> and the differentiation of various immune cells, including T-helper cells,<sup>30</sup> B-cells,<sup>31,32</sup> macrophages and NK cells. AD is an immune-driven inflammatory disease characterized by Th2 inflammation.<sup>33</sup> In AD patients, circadian rhythm disturbances affect the secretion of cortisol, disrupt melatonin levels and worsen barrier function at night, resulting in an aggravated inflammatory response and the natural rhythm of immune cells and inflammatory cytokines.<sup>34</sup> At night, T-cell activation is increased, and the expressions of Toll-like receptors, Th1 cytokines, Th2 cytokines, Th22 cytokines, and chemokines are upregulated, further stimulating the production of inflammatory cytokines,<sup>3</sup> such as IL-6 and IL-31, which can exacerbate pruritus and disrupt sleep. These processes in AD patients can aggravate the disease and prolong its course. This study also demonstrated that dendritic cells are implicated in AD. Dendritic cells are major effector cells in AD. Skin barrier dysfunction in AD patients facilitates external environmental substances (microorganisms and allergens) to invade the epidermis, which activates inflammatory epidermal dendritic cells and Th2 inflammatory responses; dendritic cells are involved in this process by presenting allergens.<sup>35,36</sup> Our findings further highlighted its potential effect on the pathogenesis of AD and demonstrated that circadian rhythm disturbances are involved in the disruption of immune functions in the skin.

Another main finding of this study was that three circadian rhythm-related genes *ARNTL2*, *NOCT*, and *RORC* were identified as key genes and predictors of AD diagnosis. *ARNTL2* is a member of the PAS superfamily and has been comprehensively reported in human malignancies.<sup>37,38</sup> *ARNTL2* overexpression is associated with reduced survival and immune disorders in clear cell renal cell carcinoma,<sup>39</sup> and can be a predictor of cancer aggressiveness in lung adenocarcinoma,<sup>40</sup> colorectal cancer,<sup>41</sup> and colon cancer.<sup>42</sup> In addition, *ARNTL2* may be involved in the functional activity of various immune cells, such as neutrophils, dendritic cells, Th1, Th2, Th17, and mast cells.<sup>43</sup> However, its role in AD has not been described. Similarly, *NOCT* and *RORC* have not been associated with AD.

In this study, we revealed the roles of *ARNTL2*, *NOCT*, and *RORC* and their association with dendritic cells in AD, indicating their potential roles as therapeutic targets. We hypothesized that modulating the abnormal circadian rhythm and immune response of dendritic cells in AD might be possible by intervening in three key genes, thereby repairing skin barrier function. Currently, we can introduce chronotherapy into the treatment of AD, which is a pattern of drug administration that synchronizes with the circadian rhythm of a condition or symptom of the disease. Properly implemented chronotherapy can provide a stable circadian sleep-wake cycle to correct circadian rhythm disturbances, where we can use such as light, melatonin, and regular work and rest guidance to increase the strength and stability of circadian rhythm genes. The results of this study provide a potential therapeutic target for the future precision medicine treatment of AD, but it still needs to be further explored and realized.

This study had some limitations. The key genes and immune cells were identified using bioinformatic approaches, and further in vitro and in vivo studies are required to investigate the molecular mechanisms underlying their roles in AD.

In conclusion, this study revealed the association between circadian rhythms and AD and several genes and immune cells involved in the progression of AD. The results of this study, might facilitate the development of circadian rhythm-oriented therapies for AD.

## Abbreviations

AD, atop dermatitis; GEO, Gene Expression Omnibus; ARNTL2, aryl hydrocarbon receptor nuclear translocator like 2; NOCT, nocturnin; RORC, retinoid-related orphan receptor C; IL-17, Interleukin-17; NF- $\kappa$ B, nuclear factor-kappa B; Th1, T helper 1 cells; Th2, T helper 2 cells; SCN, suprachiasmatic nucleus; TEWL, transepidermal water loss; pH, Potential of Hydrogen; DEGs, differentially expressed genes; ssGSEA, single-sample gene set enrichment analysis; GSEA, gene set enrichment analysis; GO, Gene Ontology; KEGG, Kyoto Encyclopedia of Genes and Genomes; PCA, principle component analysis; NK cells, natural killer cells; ROC, receiver operating characteristic; HC, healthy control, IL-6, Interleukin-6; TNF- $\alpha$ , tumor necrosis factor-alpha; TLR, toll-like receptor; Th22, T helper 22 cells; IL-31, Interleukin-31; TH17, T helper 17 cells.

## Data Sharing Statement

The Bulk and single-cell RNA-seq data used to support the findings of this study are included within the supplementary information file(s).

## Ethics Statement

This study has been reviewed by the Ethics Committee of Guang anmen Hospital, China Academy of Chinese Medical Sciences, and meets the condition of exemption from investigation.

This study was conducted using legitimate public data in the GEO database, in accordance with Article 32 of the “Measures for the Ethical Review of Life Science and Medical Research Involving Humans” of the Central People’s Government of the People’s Republic of China (using human information data or biological samples to carry out life science and medical research involving humans, if it does not cause harm to the human body and does not involve sensitive personal information or commercial interests, it may be exempted from ethical review, so as to reduce the unnecessary burden on researchers and promote the development of life science and medical research involving human beings). This research used publicly available data obtained legally, or generated by observation that do not interfere with public behavior, therefore, it is exempt from ethical scrutiny and complies with the Declaration of Helsinki.

## Acknowledgments

The authors thank all the researchers of the publicly available data mentioned above for their distinguished work.

## Author Contributions

All authors made a significant contribution to the work reported, whether that is in the conception, study design, execution, acquisition of data, analysis and interpretation, or in all these areas; took part in drafting, revising or critically reviewing the article; gave final approval of the version to be published; have agreed on the journal to which the article has been submitted; and agree to be accountable for all aspects of the work.

## Funding

The work was supported by grants from the National Natural Science Foundation of China [No. 82074448], the Scientific and technological innovation project of China Academy of Chinese Medical Sciences [No. CI2021A02301].

## Disclosure

The authors declare no conflicts of interest in this work.

## References

1. DaVeiga SP. Epidemiology of atopic dermatitis: a review. *Allergy Asthma Proc.* 2012;33(3):227–234.
2. Wolter S, Price HN. Atopic dermatitis. *Pediatr Clin North Am.* 2014;61(2):241–260. doi:10.1016/j.pcl.2013.11.002
3. Fishbein AB, Vitaterna O, Haugh IM, et al. Nocturnal eczema: review of sleep and circadian rhythms in children with atopic dermatitis and future research directions. *J Allergy Clin Immunol.* 2015;136(5):1170–1177.
4. Weidinger S, Novak N. Atopic dermatitis. *Lancet.* 2016;387(10023):1109–1122. doi:10.1016/S0140-6736(15)00149-X
5. Paternoster L, Standl M, Baurecht H, Evans DM, Weidinger S. Multi-ethnic genome-wide association study of 21,000 cases and 95,000 controls identifies 11 novel risk loci for atopic dermatitis. *J Invest Dermatol.* 2015;47(12):1449–1456.
6. Sroka-Tomaszewska J, Trzeciak M. Molecular mechanisms of atopic dermatitis pathogenesis. *Int J Mol Sci.* 2021;22(8):4130. doi:10.3390/ijms22084130
7. Vaughn AR, Clark AK, Sivamani RK, Shi VY. Circadian rhythm in atopic dermatitis—Pathophysiology and implications for chronotherapy. *Pediatr Dermatol.* 2018;35(1):152–157. doi:10.1111/pde.13364
8. Panda S, Hogenesch JB, Kay SA. Circadian rhythms from flies to human. *Nature.* 2002;417(6886):329–335. doi:10.1038/417329a
9. Reinke H, Asher G. Crosstalk between metabolism and circadian clocks. *Nat Rev Mol Cell Biol.* 2019;20(4):227–241. doi:10.1038/s41580-018-0096-9
10. Li M, Chen Z, Jiang T, et al. Circadian rhythm-associated clinical relevance and Tumor Microenvironment of Non-small Cell Lung Cancer. *J Cancer.* 2021;12(9):2582–2597. doi:10.7150/jca.52454
11. Aiello I, Mul Fedele ML, Román F, et al. Circadian disruption promotes tumor-immune microenvironment remodeling favoring tumor cell proliferation. *Sci Adv.* 2020;6(42). doi:10.1126/sciadv.aaz4530
12. Xuan W, Khan F, James CD, Heimberger AB, Lesniak MS, Chen P. Circadian regulation of cancer cell and tumor microenvironment crosstalk. *Trends Cell Biol.* 2021;31(11):940–950. doi:10.1016/j.tcb.2021.06.008
13. Matsui MS, Pelle E, Dong K, Pernodet N. Biological rhythms in the skin. *Int J Mol Sci.* 2016;17(6):1–15. doi:10.3390/ijms17060801
14. Le Fur I, Reinberg A, Lopez S, Morizot F, Mechkouri M, Tschachler E. Analysis of circadian and ultradian rhythms of skin surface properties of face and forearm of healthy women. *J Invest Dermatol.* 2001;117(3):718–724. doi:10.1046/j.0022-202x.2001.01433.x
15. Tsoi LC, Rodriguez E, Degenhardt F, et al. Atopic dermatitis is an IL-13 dominant disease with greater molecular heterogeneity compared to psoriasis. *J Invest Dermatol.* 2019;139(7):1480–1489. doi:10.1016/j.jid.2018.12.018
16. Merleev A, Ji-Xu A, Toussi A, et al. Proprotein convertase subtilisin/kexin type 9 is a psoriasis-susceptibility locus that is negatively related to IL36G. *JCI Insight.* 2022;7(16):1–15. doi:10.1172/jci.insight.141193
17. Esaki H, Ewald DA, Ungar B, et al. Identification of novel immune and barrier genes in atopic dermatitis by means of laser capture microdissection. *J Allergy Clin Immunol.* 2015;135(1):153–163. doi:10.1016/j.jaci.2014.10.037
18. Kobiela A, Frackowiak JE, Biernacka A, et al. Exposure of keratinocytes to candida albicans in the context of atopic milieu induces changes in the surface glycosylation pattern of small extracellular vesicles to enhance their propensity to interact with inhibitory siglec receptors. *Front Immunol.* 2022;13:1–17. doi:10.3389/fimmu.2022.884530
19. Rindler K, Krausgruber T, Thaler FM, et al. Spontaneously resolved atopic dermatitis shows melanocyte and immune cell activation distinct from healthy control skin. *Front Immunol.* 2021;12. doi:10.3389/fimmu.2021.630892
20. Rojahn TB, Vorstandlechner V, Krausgruber T, et al. Single-cell transcriptomics combined with interstitial fluid proteomics defines cell type-specific immune regulation in atopic dermatitis. *J Allergy Clin Immunol.* 2020;146(5):1056–1069. doi:10.1016/j.jaci.2020.03.041
21. Newman AM, Liu CL, Green MR, et al. Robust enumeration of cell subsets from tissue expression profiles. *Nat Methods.* 2015;12(5):453–457. doi:10.1038/nmeth.3337
22. Li T, Fu J, Zeng Z, et al. TIMER2.0 for analysis of tumor-infiltrating immune cells. *Nucleic Acids Res.* 2020;48(W1):W509–W514. doi:10.1093/nar/gkaa407
23. Hänzelmann S, Castelo R, Guinney J. GSEA: gene set variation analysis for microarray and RNA-Seq data. *BMC Bioinform.* 2013;14. doi:10.1186/1471-2105-14-14
24. Yu G, Wang LG, Han Y, He QY. ClusterProfiler: an R package for comparing biological themes among gene clusters. *OMICS.* 2012;16(5):284–287. doi:10.1089/omi.2011.0118
25. Bollinger T, Schibler U. Circadian rhythms - from genes to physiology and disease. *Swiss Med Wkly.* 2014;144(July):1–11.
26. Bechtold DA, Gibbs JE, Loudon ASI. Circadian dysfunction in disease. *Trends Pharmacol Sci.* 2010;31(5):191–198. doi:10.1016/j.tips.2010.01.002
27. Logan RW, Sarkar DK. Circadian nature of immune function. *Mol Cell Endocrinol.* 2012;349(1):82–90. doi:10.1016/j.mce.2011.06.039
28. Maury E, Hong HK, Bass J. Circadian disruption in the pathogenesis of metabolic syndrome. *Diabetes Metab.* 2014;40(5):338–346. doi:10.1016/j.diabet.2013.12.005
29. Sato S, Sakurai T, Ogasawara J, et al. A circadian clock gene, Rev-erba, modulates the inflammatory function of macrophages through the negative regulation of Ccl2 expression. *J Immunol.* 2014;192(1):407–417. doi:10.4049/jimmunol.1301982
30. Yu X, Rollins D, Ruhn KA, et al. Th17 cell differentiation is regulated by the circadian clock Xiaofei. *Science.* 2013;342(6159):727–730. doi:10.1126/science.1243884
31. Silver AC, Arjona A, Hughes ME, Nitabach MN, Fikrig E. Circadian expression of clock genes in mouse macrophages, dendritic cells, and B cells. *Brain Behav Immun.* 2012;26(3):407–413. doi:10.1016/j.bbi.2011.10.001
32. Arjona A, Boyadjieva N, Sarkar DK. Circadian rhythms of granzyme B, perforin, IFN- $\gamma$ , and NK cell cytolytic activity in the spleen: effects of chronic ethanol. *J Immunol.* 2004;172(5):2811–2817. doi:10.4049/jimmunol.172.5.2811
33. Gooderham MJ, ho HHC, Eshtiaghi P, Papp KA. Dupilumab: a review of its use in the treatment of atopic dermatitis. *J Am Acad Dermatol.* 2018;78(3):S28–S36. doi:10.1016/j.jaad.2017.12.022
34. Jeon C, Yan D, Nakamura M, et al. Frequency and management of sleep disturbance in adults with atopic dermatitis: a systematic review. *Dermatol Ther.* 2017;7(3):349–364. doi:10.1007/s13555-017-0192-3
35. Brunner PM, Guttman-Yassky E, Leung DYM. The immunology of atopic dermatitis and its reversibility with broad-spectrum and targeted therapies. *J Allergy Clin Immunol.* 2017;139(4):S65–S76. doi:10.1016/j.jaci.2017.01.011

36. Liang Y, Yu B, Chen J, et al. Thymic stromal lymphopoietin epigenetically upregulates Fc receptor  $\gamma$  subunit-related receptors on antigen-presenting cells and induces TH2/TH17 polarization through dectin-2. *J Allergy Clin Immunol.* 2019;144(4):1025–1035.e7. doi:10.1016/j.jaci.2019.06.011
37. Wang Z, Liu T, Xue W, et al. ARNTL2 promotes pancreatic ductal adenocarcinoma progression through TGF/BETA pathway and is regulated by miR-26a-5p. *Cell Death Dis.* 2020;11(8):692.
38. Brady JJ, Chuang CH, Greenside PG, et al. An Arntl2-Driven secretome enables lung adenocarcinoma metastatic self-sufficiency. *Cancer Cell.* 2016;29(5):697–710. doi:10.1016/j.ccell.2016.03.003
39. Wang S, Ma X, Ying Y, et al. Upregulation of ARNTL2 is associated with poor survival and immune infiltration in clear cell renal cell carcinoma. *Cancer Cell Int.* 2021;21(1):1–13.
40. Qiu BQ, Lin XH, Lai SQ, et al. ITGB1-DT/ARNTL2 axis may be a novel biomarker in lung adenocarcinoma: a bioinformatics analysis and experimental validation. *Cancer Cell Int.* 2021;21(1):1–20. doi:10.1186/s12935-021-02380-2
41. Mazzocchi G, Paziienza V, Panza A, et al. ARNTL2 and SERPINE1: potential biomarkers for tumor aggressiveness in colorectal cancer. *J Cancer Res Clin Oncol.* 2012;138(3):501–511. doi:10.1007/s00432-011-1126-6
42. Lu M, Huang L, Tang Y, et al. ARNTL2 knockdown suppressed the invasion and migration of colon carcinoma: decreased SMOC2-EMT expression through inactivation of PI3K/AKT pathway. *Am J Transl Res.* 2020;12(4):1293–1308.
43. Wang X, Li Y, Fu J, Zhou K, Wang T. ARNTL2 is a prognostic biomarker and correlates with immune cell infiltration in triple-negative breast cancer. *Pharmgenomics Pers Med.* 2021;14:1425–1440.

## Clinical, Cosmetic and Investigational Dermatology

Dovepress

### Publish your work in this journal

Clinical, Cosmetic and Investigational Dermatology is an international, peer-reviewed, open access, online journal that focuses on the latest clinical and experimental research in all aspects of skin disease and cosmetic interventions. This journal is indexed on CAS. The manuscript management system is completely online and includes a very quick and fair peer-review system, which is all easy to use. Visit <http://www.dovepress.com/testimonials.php> to read real quotes from published authors.

Submit your manuscript here: <https://www.dovepress.com/clinical-cosmetic-and-investigational-dermatology-journal>