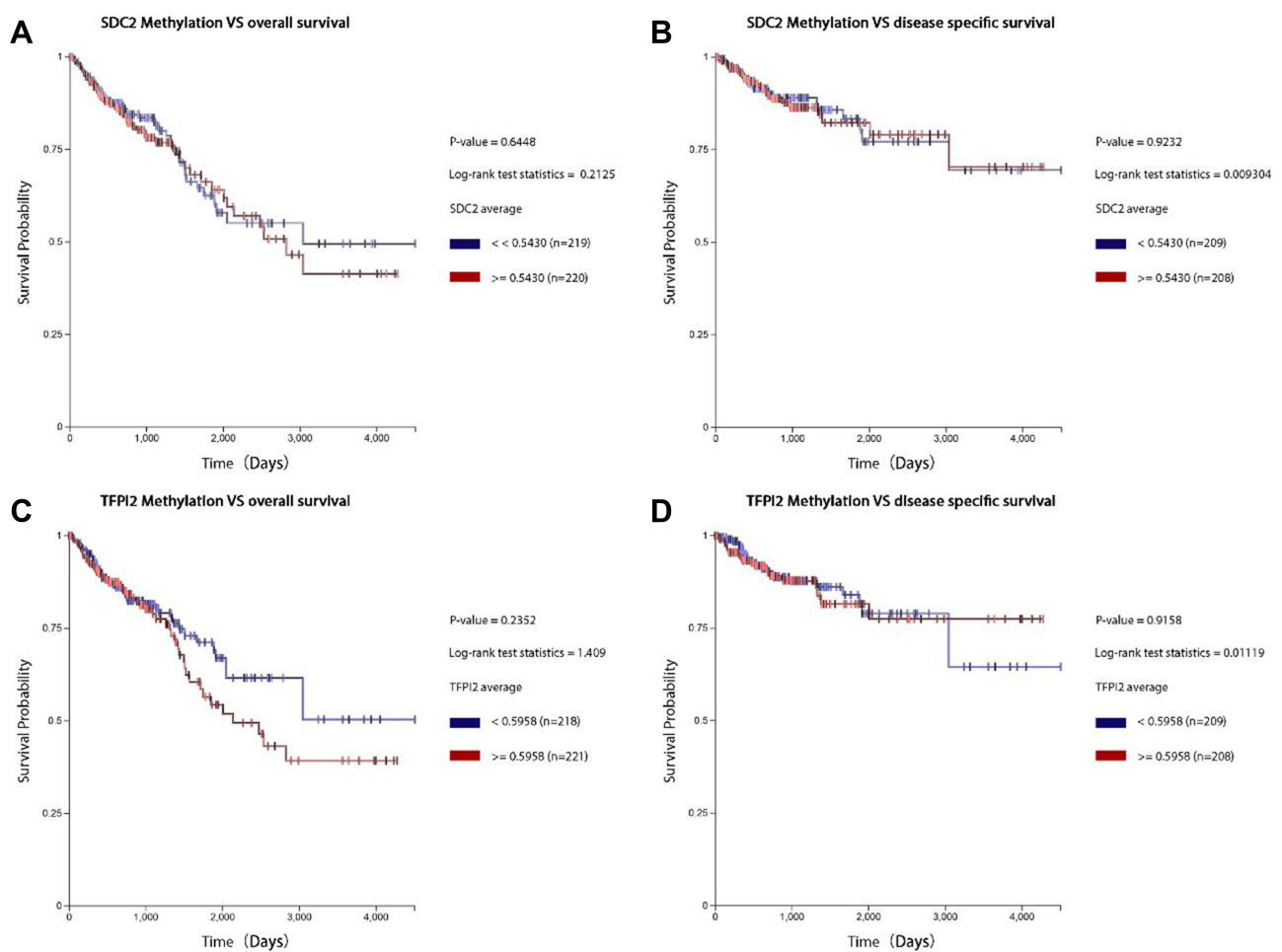


## SDC2 and TFPI2 Methylation in Stool Samples as an Integrated Biomarker for Early Detection of Colorectal Cancer [Corrigendum]

Zhang W, Yang C, Wang S, et al. *Cancer Manag Res.* 2021;13:3601–3617.

The authors have advised due to an error that occurred inadvertently at the time of figure assembly, Figure 5D on page 3609 is incorrect. The correct Figure 5 is shown below.



**Figure 5** Kaplan-Meier survival curves comparing the high and low methylation levels of SDC2 and TFPI2 in CRC patients (UCSC-XENA). **(A)** The overall survival curve for CRC patients with high or low methylation level of SDC2. **(B)** The disease-specific survival curve for CRC patients with high or low methylation level of SDC2. **(C)** The overall survival curve for CRC patients with high or low methylation level of TFPI2. **(D)** The disease-specific survival curve for CRC patients with high or low methylation level of TFPI2.

The authors apologize for the error and advise it does not affect the results of the paper.

Cancer Management and Research

Dovepress

## Publish your work in this journal

Cancer Management and Research is an international, peer-reviewed open access journal focusing on cancer research and the optimal use of preventative and integrated treatment interventions to achieve improved outcomes, enhanced survival and quality of life for the cancer patient. The manuscript management system is completely online and includes a very quick and fair peer-review system, which is all easy to use. Visit <http://www.dovepress.com/testimonials.php> to read real quotes from published authors.

Submit your manuscript here: <https://www.dovepress.com/cancer-management-and-research-journal>

<https://doi.org/10.2147/CMAR.S375358>