

Glucose-lowering effect of DLBS3233 is mediated through phosphorylation of tyrosine and upregulation of PPAR γ and GLUT4 expression

Olivia Mayasari
Tandrasasmita¹
Deasy Diah Wulan¹
Florensia Nailufar¹
James Sinambela²
Raymond Rubianto
Tjandrawinata^{1,2}

¹Division of Molecular Pharmacology,

²Division of Phytochemistry, Dextra Laboratories of Biomolecular Sciences, Dextra Medica Group, Jawa Barat, Indonesia

Background: DLBS3233 is a standardized extract combination containing *Lagerstroemia speciosa* and *Cinnamomum burmannii*. The effect of DLBS3233 on glucose uptake, adiponectin secretion, and insulin signaling was examined in this study.

Methods: 3T3 Swiss albino preadipocytes and adipocytes were used to investigate gene expression detected using the reverse transcription polymerase chain reaction method. Immunoblotting assay and in vitro glucose uptake assay were also carried out in the experiment.

Results: DLBS3233 was seen to increase phosphorylation at the tyrosine residue of the insulin receptor substrate. DLBS3233 was also found to enhance the expression of genes associated with increased insulin signaling and sensitivity, such as *peroxisome proliferator-activated receptor gamma*, *phosphatidylinositol-3 kinase*, *Akt*, and *glucose transporter 4*. In addition, glucose transporter 4 protein levels were seen to increase as a result of DLBS3233 administration. The combination of extracts also increased glucose uptake and adiponectin secretion, and decreased resistin secretion significantly relative to control cells. Moreover, DLBS3233 administered to insulin-resistant Wistar rats showed an ability to control blood sugar, insulin levels, and other lipoproteins, including high-density lipoprotein, low-density lipoprotein, triglycerides, and total cholesterol.

Conclusion: DLBS3233, as a combination of herbal extracts, holds promise in the treatment of type 2 diabetes, and possibly also in prevention of the disease.

Keywords: *Lagerstroemia speciosa*, *Cinnamomum burmannii*, peroxisome proliferator-activated receptor gamma, glucose transporter 4

Introduction

In order to function, insulin binds to its receptor within the cell membrane. This mode of binding induces intracellular signaling pathway chain reactions, such as activation of *glucose transporter* enzymes and *peroxisome proliferator-activated receptor gamma* (PPAR γ), *peroxisome proliferator-activated receptor delta* (PPAR δ), and other transcription factors.¹ Minor inhibition of signal transduction level will cause a decrease in insulin sensitivity. Among many classes of diabetes medication, the currently accepted medical treatment for increasing insulin sensitivity is the thiazolidinediones (TZDs), including pioglitazone and rosiglitazone.¹ TZDs are substrates for the PPAR γ transcription factor. Increasing the dosage of TZDs will increase gene expression of PPAR γ , even though TZDs have been found to cause side effects, such as increased serum glutamic oxaloacetic transaminase and serum glutamic pyruvic transaminase levels (idiosyncratic acute hepatotoxicity) and some edema.²

Correspondence: Raymond R Tjandrawinata
Dextra Laboratories of Biomolecular Sciences, PT Dextra Medica, Industri Selatan V Block PP No 7, Kawasan Industri Jababeka II, Cikarang 17550, Indonesia
Tel +62 21 8984 1901
Fax +62 21 8984 1905
Email raymond@dextra-medica.com

Moreover, an insulin-resistant state is commonly associated with lipoprotein abnormalities that are risk factors for atherosclerosis, including hypertriglyceridemia, high levels of very low-density lipoprotein, low levels of high-density lipoprotein (HDL), and low levels of low-density lipoprotein (LDL). These metabolic abnormalities, together with hypertension and type 2 diabetes mellitus, may cluster in the same individual, causing the metabolic syndrome X.³

In this experiment, the biological activity of DLBS3233, a herbal extract combination containing *Lagerstroemia speciosa* and *Cinnamomum burmannii*, was investigated in a number of assays performed in 3T3-Swiss albino preadipocytes and Wistar rats. In this assay, pioglitazone was used as a positive control for the TZD class and glimepiride was used as a positive control for sulfonylureas. Previous studies showed that an extract from *L. speciosa* leaves could be used to decrease blood glucose levels in genetically diabetic rats and could also enhance glucose transport to adipocyte cells.⁴⁻⁶ According to Hattori et al,⁵ the biological activity of *L. speciosa* is attributable to several of its active compounds (such as triterpene and corosolic acid) serving as insulin mimetics which can activate tyrosine kinase as an insulin receptor and inhibit tyrosine phosphatase. It is also believed that *L. speciosa* works as a glucose transport activator and adipogenesis inhibitor in 3T3 Swiss albino cells.⁶ In recent years, several studies have reported that cinnamon extract has an antidiabetic effect in db/db mice and in type 2 diabetic patients.⁷ We investigated further the combination of *L. speciosa* and *C. burmannii* to clarify the mechanism of action by which this combination decreases insulin resistance and increases glucose uptake.

Materials and methods

Materials

3T3 Swiss albino preadipocytes were obtained from the European Collection of Cell Culture (Salisbury, UK). Isobutyl-3-methylxanthine, dexamethasone, fetal calf serum, and trypsin-ethylenediamine tetra-acetic acid were purchased from Sigma Aldrich (St Louis, MO). Dulbecco's Modified Eagle's Medium (DMEM), L-glutamine, and penicillin/streptomycin were obtained from Gibco BRL (Carlsbad, CA) while Trizol[®] was from Invitrogen (Carlsbad, CA). A One Step RNA PCR Kit RT, RNasin, dNTP mix, oligo dT, MgCl₂, Taq polymerase, GoTaq Green master mix, Track It DNA Ladder 100 bp, and 3-(4,5-dimethylthiazol-2-yl)-2,5-diphenyltetrazolium bromide (MTT) were purchased from Promega (Madison, WI) while anthrone, fructose, and glucose was from Merck (Whitehouse Station, NJ). *L. speciosa* was

obtained from Cianjur, West Java, Indonesia, while *C. burmannii* was purchased from Kerinci, Jambi, Indonesia. Both of these plants were identified by Herbarium Bogoriense, Research Center for Biology, Indonesian Institute of Sciences (Reference 1261/IPH.1.02/If.8/XII/2009).

Phytochemical characterization of DLBS3233

DLBS3233 was prepared as a polar extract in which 450 g of dried *C. burmannii* plant and 150 g of dried *L. speciosa* plant were mixed. The mixture was extracted simultaneously using a percolation technique in warm water (1:8–10) at a temperature of 50–90°C. The micelles were then filtered and dried using a Rotavapor (Büchi, Flawil, Switzerland) at a temperature of 40–50°C, and subsequently dissolved in methanol for further study. The yield of this experiment was about 6.5%.

DLBS3233 was identified using thin layer chromatography. It was spotted on a 60 F₂₅₄ silica gel plate and eluted using an eluent mixture of 1-butanol, acetic acid, water, chloroform, acetone, and formic acid (10:4:4:70:25:15). The eluent was allowed to move along the thin layer chromatography plate for a distance of 8 cm. Observation was done under ultraviolet light at 254 nm and 366 nm before and after a derivatization process using weak acid. In the chromatogram resulting from thin layer chromatography, it was observed that the components of DLBS3233 were extracted well. After the derivatization process was observed under ultraviolet light at 366 nm, a spot with R_f 0.6 showed that DLBS3233 contained a concentrate of *C. burmannii* and an R_f 0.3 of *L. speciosa*.

The presence of polyphenol in DLBS3233 was analyzed using a high-pressure liquid chromatography water 1525 binary high-pressure liquid chromatography pump with the Waters 2487 dual λ absorbance as a detector. The column used in this experiment was a Waters Atlantis dC₁₈ (4.6 mm \times 150 mm, 5.0 μ m). Its absorbance was measured at 279 nm. The gradient elutions used were acetic acid 0.05 N and acetonitrile at a flow rate of 1 mL/min, with the ratio changed at 30 and 40 minutes. The polymer found in DLBS3233 is similar in chromatography to that found by Anderson et al,⁸ and hence it is suggested that the polymer is a polyphenol type A.

Cell culture

3T3 fibroblast Swiss albino cells were maintained in high glucose DMEM containing 10% fetal calf serum, 2 mM L-glutamine, and 1% penicillin/streptomycin at 37°C in a humidified atmosphere of 5% CO₂. Cells were subcultured

every 3–4 days at approximately 90% confluency. Three days before treatment, the cells were grown to about 1×10^4 cells/mL on 10 cm diameter plates.

Adipocyte cell differentiation

3T3 fibroblast Swiss albino preadipocytes were grown (day 0) in a differentiation medium 1 (high-glucose DMEM, fetal calf serum 10%, dexamethasone 0.25 μ M, isobutyl-3-methylxanthine 0.25 mM, and insulin 1 μ g/mL), at about 1×10^4 cells/mL in a 75 mL flask. Under these conditions, lipid accumulation was apparent in 5% of cells. On day 2, the medium was changed to a new differentiation medium 1. On day 3, the dexamethasone and isobutyl-3-methylxanthine were removed, leaving insulin on the cells. Cells were maintained in differentiation medium 2 (high-glucose DMEM, fetal calf serum 10%, and insulin 1 μ g/mL), and the medium was changed every 2–3 days. Differentiation was observed by a visual method using microscopy. The 3T3 Swiss albino adipocytes were found to be rounder in shape than the 3T3 Swiss albino preadipocytes. Under this supplemented condition, lipid droplets were observed in 15%–20% of the adipocytes, as assessed by oil red O staining (data not shown).

Immunoblotting with antiphosphotyrosine antibody

To analyze tyrosine phosphorylation at the insulin receptor, cells prepared in sample buffer were centrifuged at 5000 rpm for 10 minutes. The supernatants were subjected to electrophoresis on 8% sodium dodecyl sulfate gel. Proteins were electrophoretically transferred to a supported nitrocellulose membrane. The membrane was blocked with nonspecific proteins (Block I, 5% wt/vol powdered skimmed milk in phosphate-buffered saline). After primary blocking, the membrane was incubated overnight with fresh Block I and polyclonal anti-IRS-1 antibody. The next day, after the appropriate washes (phosphate-buffered saline followed by Tris/NaCl [50 mmol/L Tris, 150 mmol/L NaCl, pH 7.5]), the nitrocellulose membrane was incubated with the secondary antibody, ie, rabbit-antimouse horseradish peroxidase conjugate (Sigma). The blotted nitrocellulose membrane was treated with enhanced chemiluminescence substrates (ECL, Amersham, Arlington Heights, IL) and the membrane was used to expose X-ray films.

Insulin-resistant preadipocytes

In order to make an insulin-resistant cell, either preadipocytes or adipocytes were maintained for more than 2 weeks in very high-glucose DMEM containing 10 mg/mL glucose,

10% fetal calf serum, 2 mM L-glutamine, and 1% penicillin/streptomycin at 37°C in a humidified atmosphere of 5% CO₂. Cells were subcultured every 3–4 days to reach approximately 90% confluency.

Extract administration

Before administration of the extract, the cell medium was changed to a serum-free medium. Both the extract (1–5 μ g/mL) and positive controls (pioglitazone and glimepiride) were administered and incubated for 48 hours. Extracts of *C. burmanii* and *L. speciosa* was also administered separately to the cells in order to observe the effect of each plant alone compared with their combination.

RNA isolation

Total RNA was extracted using Trizol from 3T3 cells following the manufacturer's instructions. In brief, the cells were lysed in Trizol reagent and extracted using chloroform, followed by isopropanol precipitation at 4°C for about 1–4 hours. The pellet was suspended by double-distilled H₂O or nuclease-free water and stored at –20°C prior to use. Concentration and purity level (A260:A280) was determined by optical density measurement using a spectrophotometer (BioRad, Hercules, CA) at a 260 nm wavelength, and then the integrity of the RNA was verified using gel electrophoresis to detect the 28S and 18S ribosomal band.

Reverse transcription polymerase chain reaction

Prior to the reverse transcription process, RNA was incubated at 65°C for 10 minutes. The reverse transcription reaction was conducted in 25 μ L of 1 μ g RNA, 5 μ L of 5 \times buffer AMV reverse transcriptase, 0.5 μ L of RNasin 40 U/ μ L, 2.5 μ L of dNTP mix 10 mM, 1 μ L of Oligo dT 500 μ g/mL, 0.5 μ L of AMV reverse transcriptase 10 U/ μ L, and double-distilled H₂O until a total volume of 25 μ L was obtained. Conditions for the reverse transcription step of RNA included hybridization at 30°C for 10 minutes, reverse transcription at 45°C for 45 minutes, denaturation at 99°C for 5 minutes, and continued at 6°C for 5 minutes. The reverse transcription product, ie, cDNA, was stored at –20°C prior to use.

Gene expression analysis

Analysis of gene expression was measured at the mRNA level. Polymerase chain reaction was performed to amplify the specific gene using specific oligonucleotide primers designed by Primer 3 software. The gene sequences were obtained from the GenBank database. Genes involved in

Table 1 Primers used to amplify region of interest in PCR

| Gene name | Primer sequences | PCR product (bp) |
|--------------------------------------|--|------------------|
| <i>PI3 kinase</i> | Sense: 5'-GAA GAC TGA GAG GCC ACG AC-3' Antisense: 5'-CTT GTA ATC CAT GGC GTC CT-3' | 180 |
| <i>Akt</i> | Sense: 5'-ACT GTT CAG AGA GGC CAG GA-3' Antisense: 5'-CGG TTG CCT ACT GGT TCA AT-3' | 181 |
| <i>PPARγ</i> | Sense: 5'-GCT GTG CAG GAG ATC ACA GA-3' Antisense: 5'-CCC CTC CAT AAA CTC ACC AA-3' | 229 |
| <i>GLUT4</i> | Sense: 5'-ACT CTT GCC ACA CAG GCT CT-3' Antisense: 5'-AAT GGA GAC TGA TGC GCT CT-3' | 174 |
| <i>Adiponectin</i> | Sense: 5'-GTT GCA AGC TCT CCT GTT CC-3' Antisense: 5'-TCT CCA GGA GTG CCA TCT CT-3' | 192 |
| <i>Resistin</i> | Sense: 5' GCT GAG GGT CTG GAA ATG AA-3' Antisense: 5' GGC CAG CCT GGA CTA TAT GA-3' | 223 |
| <i>Beta actin</i> (internal control) | Sense: 5' AGA GGG AAA TCG TGC GTG AC 3' Antisense 5' CAA TAG TGA TGA CCT GGC CGT 3' | 138 |

Abbreviations: PCR, polymerase chain reaction; *PPAR γ* , peroxisome proliferator-activated receptor gamma; *PI3*, phosphatidylinositol-3.

insulin signal transduction (phosphatidylinositol-3 [PI3] kinase, Akt, PPAR γ , glutamine transporter 4 (GLUT4), adiponectin, and resistin, the specific primers for which are shown in Table 1) were detected using a reverse transcription polymerase chain reaction. The amplification reaction for the genes was carried out in a 25 μ L mixture of solution containing 12.5 μ L of Go Taq Green master mix, a pair of target genes with a final concentration of 0.9–1.2 μ M, a pair of internal controls (beta actin) with a final concentration of 0.08–1.0 μ M, 5 μ L of cDNA, and double-distilled H₂O. Polymerase chain reaction conditions for each target gene were similar to each other, and generally consisted of initial denaturation at 95°C for 3 minutes, 30–40 cycles of denaturation at 95°C for 30 seconds, primer annealing at 56–60°C for 30 seconds, and elongation at 72°C for 1 minute. When necessary, an additional elongation reaction was performed at 72°C for 10 minutes. Reverse transcription polymerase chain reactions were done using the PCR iCycler (BioRad). Target gene expression was expressed quantitatively, reflecting a ratio of the target gene product bands to an internal control band, and calculated according to the formula supplied in the manufacturer's manual and using Image J Imaging System software (v 1.24; National Institutes of Health, Bethesda, MD).

Quantifications of GLUT4 protein

Total protein of 3T3 cells was extracted and separated by SDS-PAGE 10%. They were then transferred onto PVDF membranes (Millipore, Bedford, MA). HRP-conjugated secondary antibodies and chemiluminescence system were applied for the detection of blots. Images were acquired using an LSD-4000 chemiluminescence Imager (Fujifilm,

Tokyo, Japan). Band intensities were quantified using Image J software (National Institutes of Health).

In vitro glucose uptake activity assay

Glucose uptake activity was analyzed by measuring the ratio of exogenously administered glucose concentrations with those found after a period of incubation. Measurement of glucose concentration was performed via the reaction of glucose with anthrone in strong sulfuric acid.⁹ Cells were grown to about 1×10^4 cells/mL in 6 cm diameter plates. 3T3-Swiss albino cells were maintained in high-glucose DMEM containing 10% fetal calf serum, 2 mM L-glutamine, and 1% penicillin/streptomycin at 37°C in a humidified atmosphere of 5% CO₂. Briefly, confluent cells were washed twice with phosphate-buffered saline and incubated with 3 mL glucose solution 10 mg/mL with or without administration of DLBS3233 extract at 37°C for 0, 2, 4, and 6 hours. During incubation the cells took up glucose, enabling free glucose to be measured in the media, from which the concentration of glucose uptake could then be determined. The concentration of glucose taken up by the cells is described by the equation:

$$[\text{glucose uptake}] = [\text{initial glucose}] - [\text{free glucose within media}], \text{ and}$$

$$\% \text{ glucose uptake} = \frac{[\text{initial glucose}] - [\text{free glucose within media}]}{[\text{initial glucose}]} \times 100\%$$

Anthrone was dissolved in H₂SO₄ prepared by adding concentrated acid to water. This anthrone solution is ready to be used after incubation for at least 2 hours and must be

used within 24 hours. The reaction of anthrone and glucose was analyzed by the following procedure. Portions of the free glucose solutions in each well plate were transferred into test tubes. Each tube was placed in a water bath while anthrone reagent was added. The tubes were transferred to a boiling water bath for several minutes, and then stored in a dark room for a few minutes. The optical densities of the colored solutions were measured using a spectrophotometer (BioRad) at 625 nm. The increase in glucose uptake after administration of DLBS3233 was calculated according to the formula supplied in the manufacturer's manual using Image J Imaging System software.

Animal experiment

Wistar rats (male, eight weeks old, 200–220 g) were obtained from D'Wistar (Bandung, Indonesia). The animal study was conducted with approval from the ethical institutional advisory committee as suggested by the Association for Assessment and Accreditation of Laboratory Animal Care (AAALAC). Animals were individually housed according to the guidelines of AAALAC and maintained at 25°C with a 12-hour light/dark cycle. The animals were given free access to water. They had been acclimatized for 1 week before treatment. The rats were separated into three groups. The first group ($n = 7$) comprised controls maintained on a standard diet. The second ($n = 7$) and third ($n = 7$) groups were maintained on a high-glucose diet for two weeks, with fructose 15% and glucose 10% to make them insulin-resistant. The third group was later treated with DLBS3233 at 9 mg/kg body weight for another 2 weeks. After the end of the treatment period, blood samples were collected from the tail vein of each rat to measure the random glucose level. Later, the rats in each group were fasted overnight, fed, and 2 hours later, blood samples were taken to measure postprandial glucose. Animals were fasted overnight again, blood samples were collected by cardiac puncture, and centrifuged at 8500 g for 25 minutes. The serum was separated out to measure the level of fasting glucose, insulin, triglycerides, total cholesterol, LDL, and HDL. An ultrasensitive rat insulin enzyme-linked immunosorbent assay (Mercodia, Uppsala, Sweden) and microplate reader (BioRad) were used to measure the insulin level. Other tests were carried out using a semiautomated clinical chemistry analyzer (Vital Scientific, the Netherlands). In addition, homeostasis model assessment was calculated by multiplying the glucose (mmol/L) by the insulin concentration, then dividing by a factor of 22.5.¹⁰ The data were analyzed using one-way analysis of variance, and the significance level was measured by the post hoc Bonferroni test using Biostat software (Alexandria, VA).

Statistical analyses

Statistical differences in test and control samples were determined by Student's *t*-test or ANOVA using Statview software (Abacus Concepts, Inc, Berkeley, CA). Data shown are from a representative experiment which was performed in duplicate or triplicate.

Results

Glucose uptake in normal and insulin-resistant preadipocytes/adipocytes

In order to study glucose uptake in different adipocyte conditions, the 3T3 fibroblast Swiss albino cells were allowed to differentiate into mature adipocytes so that they could be used as a cellular model of insulin resistance in diabetes. In the insulin-resistant condition, their glucose uptake capacity was used to simulate the actual phenomenon in the clinical setting. It was found that the insulin-resistant preadipocytes and mature adipocytes took up glucose at a much lower rate than their normal counterparts (Figure 1A). In addition, the onset of glucose uptake was found to be earlier in normal preadipocytes and adipocytes when compared with those that were insulin-resistant. This suggests that glucose transport impairment had occurred in the insulin-resistant preadipocytes and adipocytes, a clinically important phenomenon in predicting the onset of type 2 diabetes even in seemingly normal individuals.

Effect of DLBS3233 versus pioglitazone on glucose uptake

In order to investigate the glucose transport profile in adipocytes, glucose uptake assays were performed in normal and insulin-resistant adipocytes at different times (1 and 6 hours) following exogenous glucose administration. In general, the uptake took place as early as 1 hour in most cells (A–J), and the longer the duration of exposure, the higher the uptake (1–6 hours, Figure 1B). In addition, it was seen that the resistant cells took up less glucose than did the normal cells, a phenomenon seen previously in Figure 1. Pioglitazone 0.02 μm was used as a positive control. Addition of pioglitazone to insulin-resistant adipocytes led to a 1.5-fold increase in glucose uptake compared with non-pioglitazone-treated adipocytes (I versus H). Similarly, addition of DLBS3233 to normal or insulin-resistant cells led to a 1.5–2.0-fold increase in glucose uptake compared with control cells (D versus B in normal cells; J versus H in their resistant counterparts). These data suggest that an insulin sensitizer works well for increasing glucose uptake into cells and thus lowers blood glucose levels.

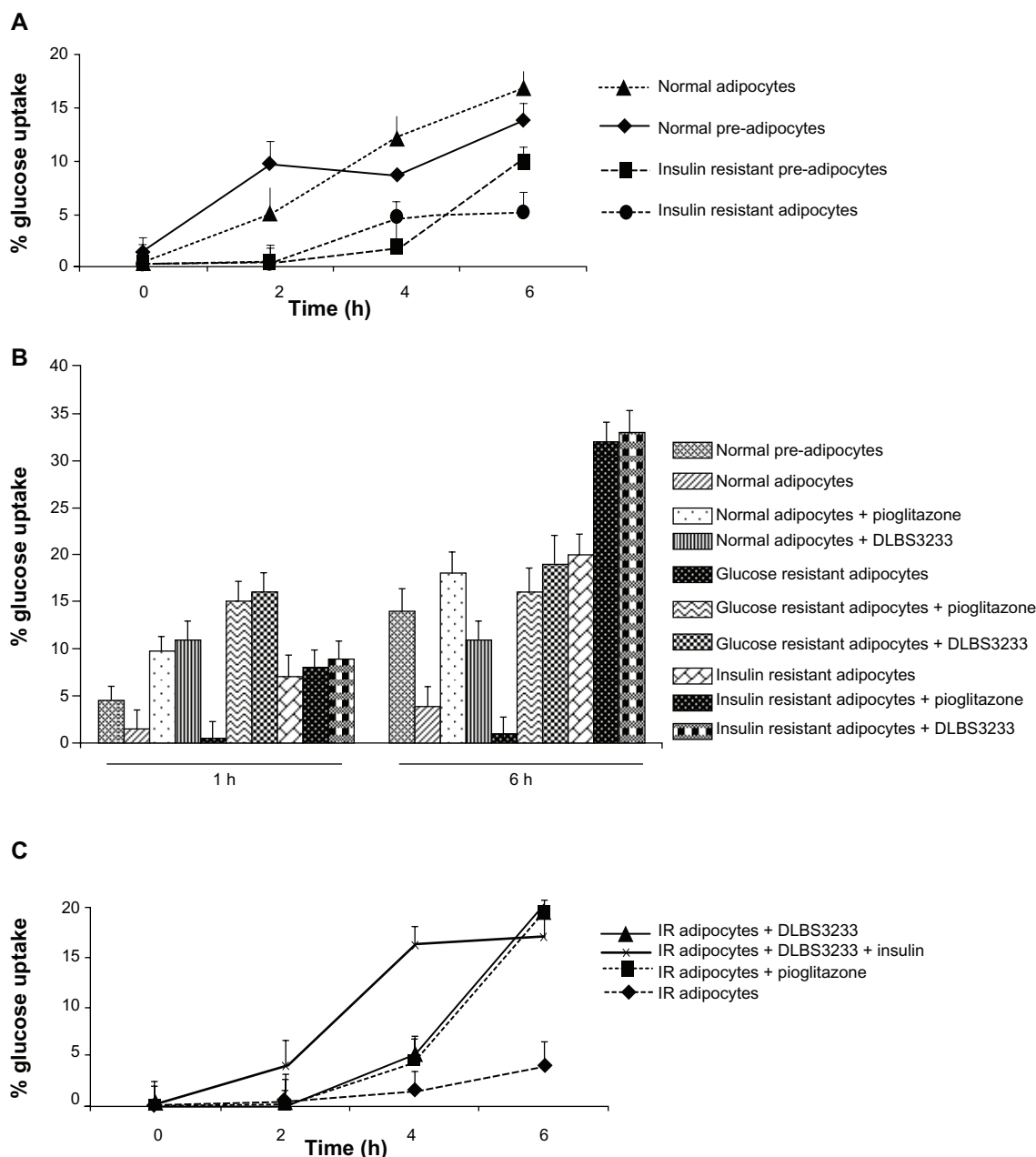


Figure 1 DLBS3233 increases glucose uptake in 3T3 Swiss albino cells compared with untreated cells. **A)** Glucose uptake level of 3T3 Swiss albino preadipocytes and adipocytes in normal and insulin-resistant condition. **B)** Effect of DLBS3233 5 $\mu\text{g}/\text{mL}$ and pioglitazone 0.02 μM on glucose uptake in normal and insulin-resistant 3T3 Swiss albino adipocytes. **C)** DLBS3233 5 $\mu\text{g}/\text{mL}$ enhances glucose uptake activity of 3T3 Swiss albino insulin-resistant adipocytes as potently as pioglitazone in time-dependent manner. Results are mean value \pm standard deviation of two independent experiments.

Effect of DLBS3233 on glucose uptake in insulin-resistant adipocytes

The capacity for glucose uptake before treatment in 3T3 insulin-resistant Swiss albino adipocytes was found to be less than 5% (control cells). However, after DLBS3233 treatment, the uptake capacity was increased by about 20%, as shown in Figure 1C. Similar results were found when the cells were treated with pioglitazone. This suggests that DLBS3233 is as potent as pioglitazone in inducing glucose uptake.

Induction of *PPAR* γ gene expression in 3T3 preadipocytes

In order to confirm the activity of DLBS3233 as a combination compared with each plant it is derived from, the effects of *C. burmanii* and *L. speciosa* on *PPAR* γ gene expression were studied individually. It can be seen in Figures 2A and 2B that neither *C. burmanii* nor *L. speciosa* had any significant effect on *PPAR* γ gene expression when used alone. The level of gene expression appeared to be similar after administra-

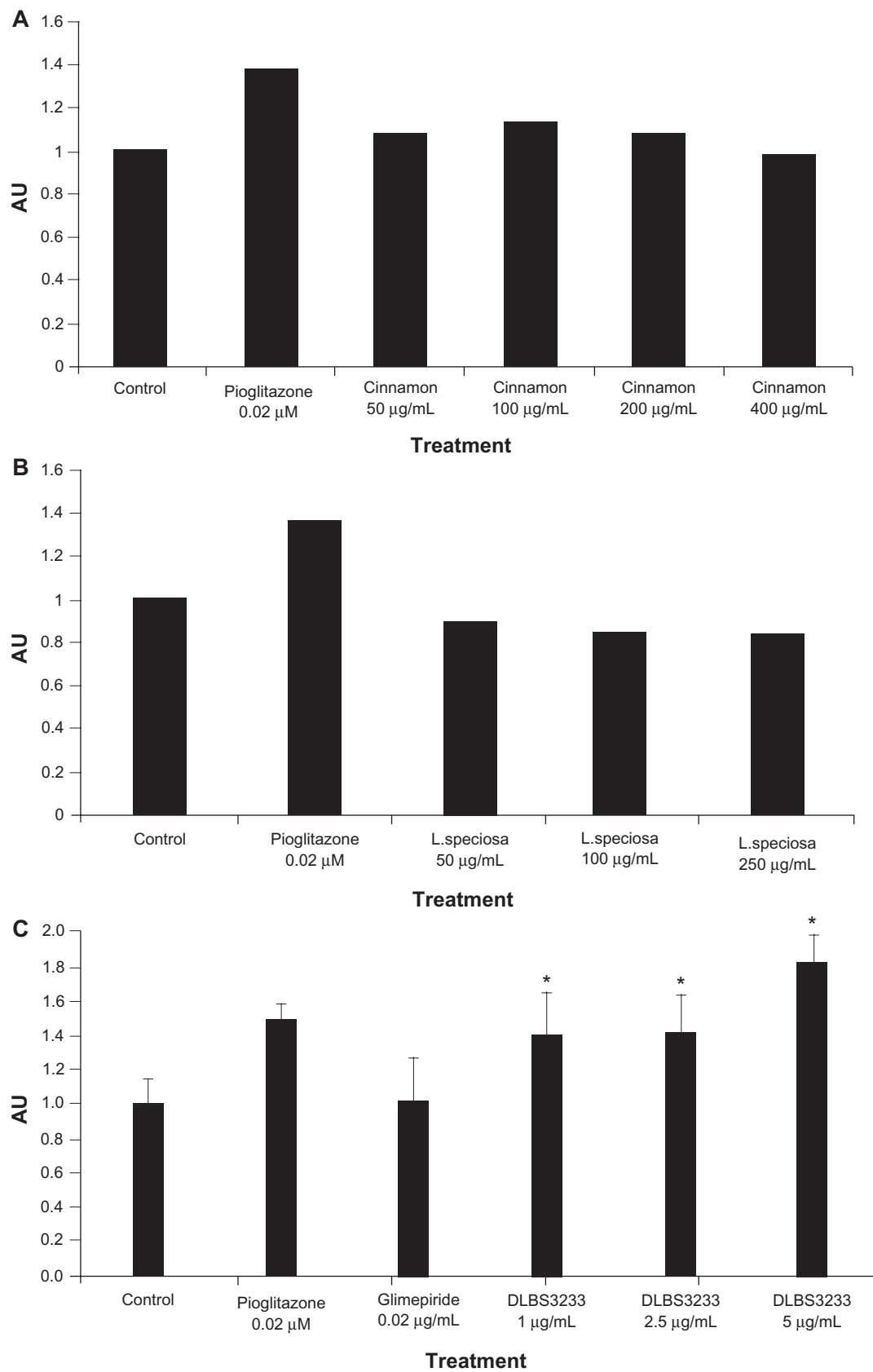


Figure 2 Peroxisome proliferator-activated receptor gamma gene expression after administration of *Cinnamomum burmanii* extract (A), *Lagerstroemia speciosa* extract (B), and DLBS3233 (C) at various concentrations.

tion of both these plants compared with controls. These data suggest that, when used in combination, *C. burmanii* and *L. speciosa* interact with each other, causing the native characteristics of each extract to work synergistically to strengthen their pharmacological activity.

Moreover, the effect of DLBS3233 on *PPAR* γ expression at the mRNA level was compared with that of pioglitazone and glimepiride. The DLBS3233 concentration which stimulated the highest *PPAR* γ mRNA expression was 5 $\mu\text{g}/\text{mL}$ (Figure 2C). This concentration of DLBS3233 enhanced *PPAR* γ expression to a 1.8-fold greater extent than in the control cells. On the other hand, administration of pioglitazone 0.02 μM to 3T3 Swiss albino cells enhanced *PPAR* γ expression by only 1.5-fold compared with the control cells, whereas glimepiride 0.02 μM did not result in any effect. This result suggests that DLBS3233 may contain bioactive compound(s) that can act as a direct ligand for *PPAR* γ . In other words, DLBS3233 may regulate the expression of *PPAR* γ either directly or indirectly.

Effect of DLBS3233 on tyrosine phosphorylation

In this experiment, administration of DLBS3233 promoted tyrosine phosphorylation at the insulin receptor in a dose-dependent manner (Figure 3A). The concentration of DLBS3233 used in this experiment was in the range of 20–100 $\mu\text{g}/\text{mL}$. The administration of exogenous insulin (10 nM and 100 nM) also promotes tyrosine phosphorylation.

Induction of *PI3 kinase* gene expression in 3T3 preadipocytes

This study measured the activation of *PI3 kinase* as a broad indicator of insulin action in the overall insulin signal transduction pathway. The effect of DLBS3233 on induction of *PI3 kinase* expression at the mRNA level was compared with that of pioglitazone. The DLBS3233 concentration which stimulated the highest *PI3 kinase* mRNA expression

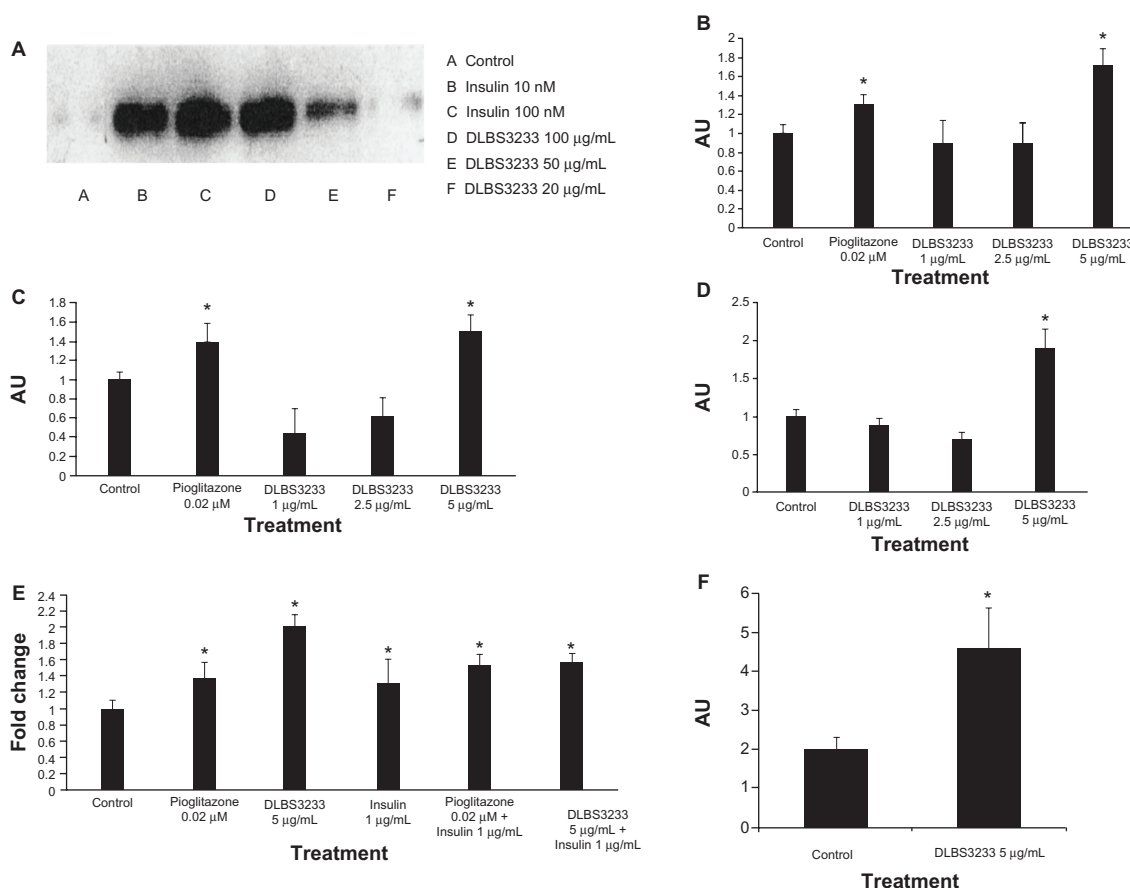


Figure 3 Effect of DLBS3233 5 $\mu\text{g}/\text{mL}$ on expression of tyrosine phosphorylation (A). The effect of DLBS3233 5 $\mu\text{g}/\text{mL}$ and pioglitazone 0.02 μM in enhancing phosphatidylinositol-3 kinase (B) and Akt (C) gene expression in 3T3 Swiss albino preadipocytes. The effect of DLBS3233 1–5 $\mu\text{g}/\text{mL}$ in enhancing *glucose transporter 4* gene expression in 3T3 Swiss albino preadipocytes (D). Effect of DLBS3233 and pioglitazone with or without insulin in enhancing *glucose transporter 4* gene expression (E), and also total *glucose transporter 4* protein level (F).

Notes: Results are mean value \pm standard deviation of two independent experiments. * $P < 0.05$ indicates significant difference compared with controls.

Abbreviation: AU, arbitrary unit.

was 5 $\mu\text{g}/\text{mL}$ (Figure 3B). This concentration of DLBS3233 enhanced *PI3 kinase* expression to a 1.7-fold greater extent than in the control cells. Such enhancement was found to be even higher than that demonstrated by 0.02 μM pioglitazone (1.25 times greater than in controls). This result suggests that DLBS3233 action may involve compound(s) which can directly or indirectly activate(s) the insulin receptor, tyrosine kinase.¹¹

Induction of Akt gene expression in 3T3 preadipocytes

The effect of DLBS3233 on the induction of *Akt* expression at the mRNA level was compared with that of pioglitazone. The concentration of DLBS3233 that stimulated the greatest

Akt expression in 3T3 cells was 5 $\mu\text{g}/\text{mL}$ (Figure 3C). This concentration enhanced *Akt* expression to a 1.5-fold greater extent than that seen in the control cells. This value was slightly greater than that for pioglitazone 0.02 μM , which enhanced *Akt* expression to a 1.4-fold greater degree than in control cells. This result indicates that expression of the *Akt* effector of *PI3 kinase* is activated by DLBS3233 and pioglitazone, and this is an important event in the process of conferring insulin sensitivity.¹²

Induction of GLUT4 gene expression by DLBS3233

To study the activity of DLBS3233 as a glucose transport stimulant, an analysis of *GLUT4* gene expression was undertaken. The

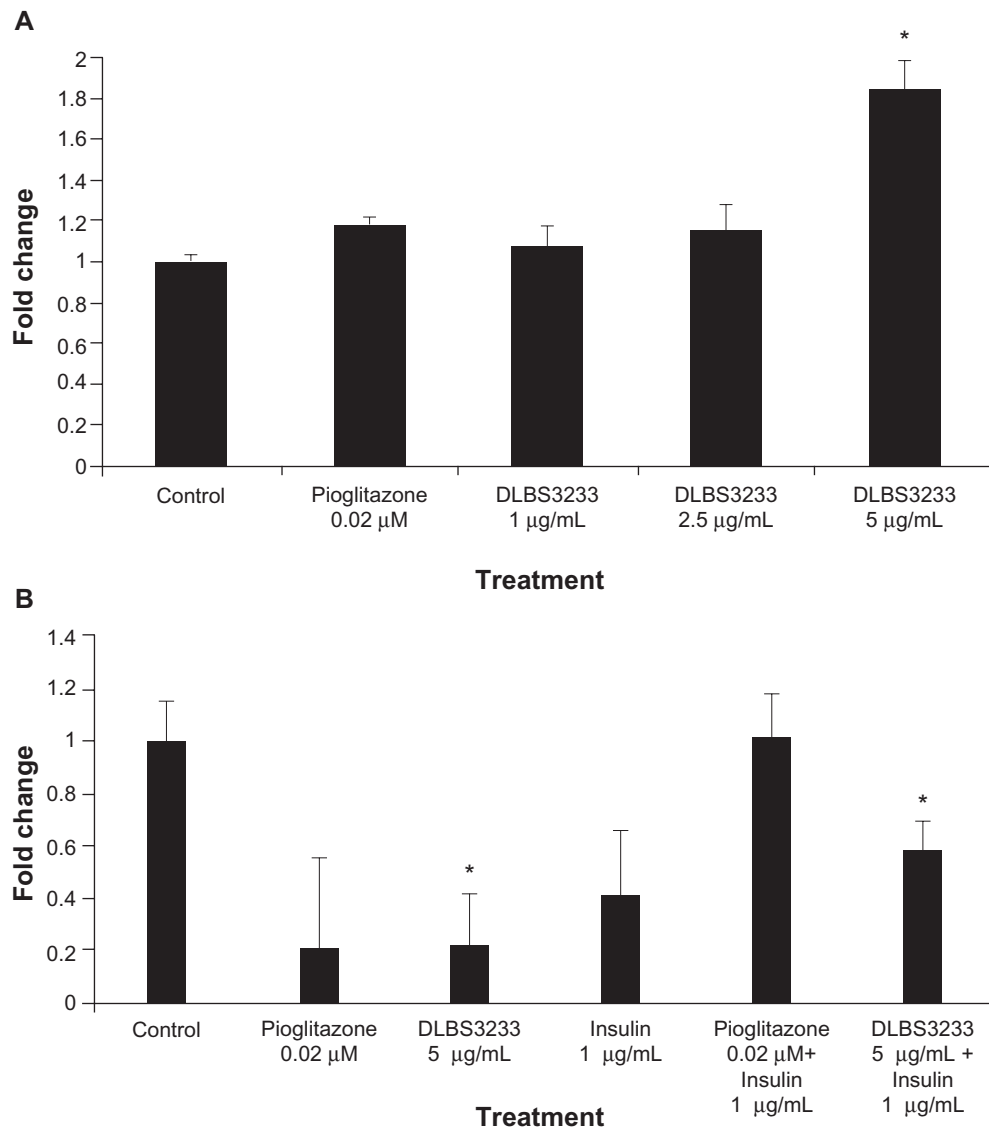


Figure 4 DLBS3233 increases transcription level of *adiponectin* (A), and decreases transcription level of *resistin* (B) in 3T3 Swiss albino preadipocytes.

Notes: Results are mean value \pm standard deviation of two independent experiments. * $P < 0.05$ indicates a significant difference compared with control.

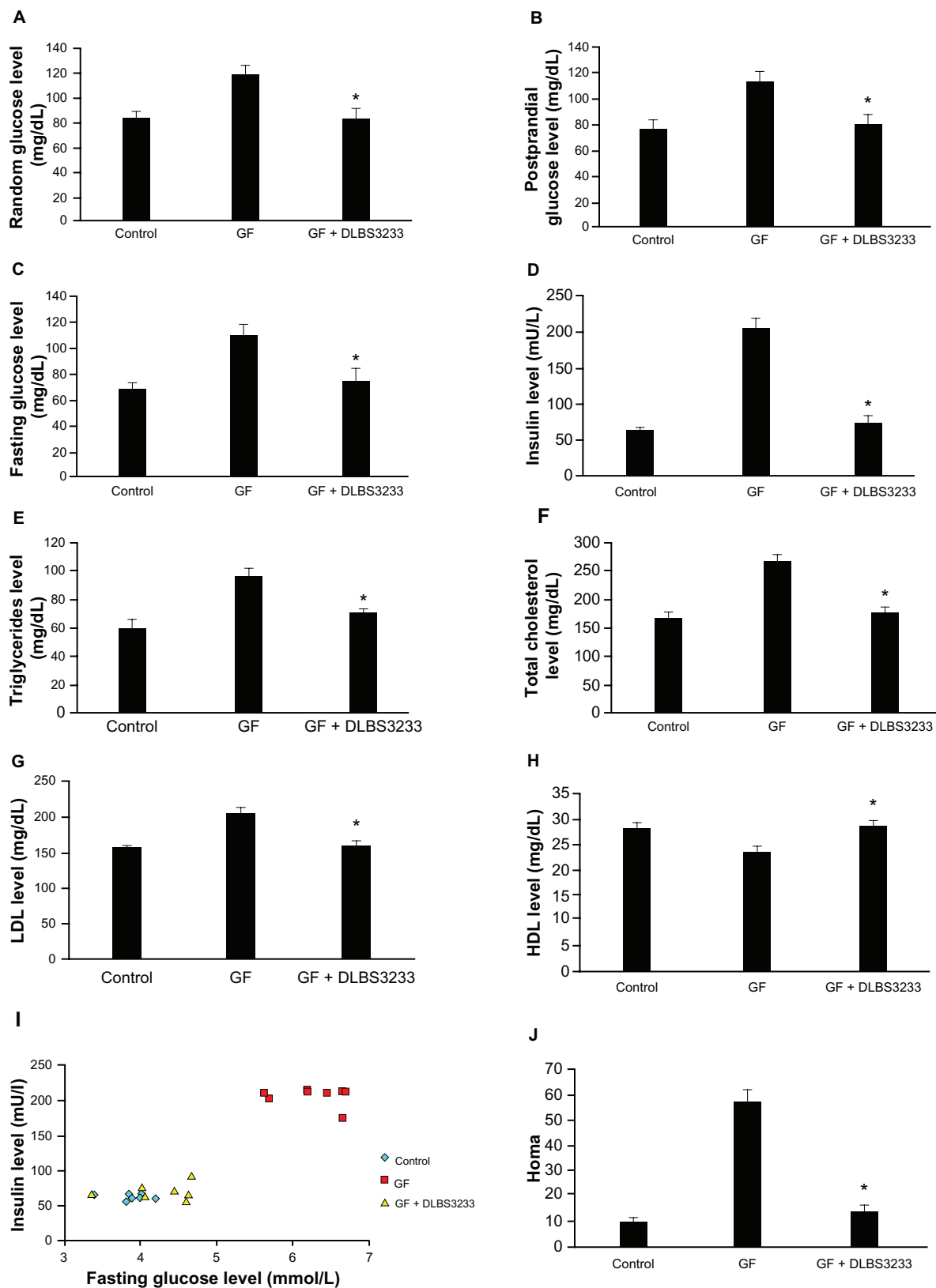


Figure 5 Effect of DLBS3233 9 mg/kg body weight on the levels of glucose (A), postprandial glucose (B), fasting glucose (C), insulin (D), triglycerides (E), total cholesterol (F), low-density lipoprotein (G), and high-density lipoprotein (H) in insulin-resistant Wistar rats, and comparison of fasting glucose and insulin level (I) and further expressed as homeostasis model assessment (J).

Notes: Results are mean value \pm standard deviation of two independent experiments. * $P < 0.05$ indicates a significant difference compared with GF group.

Abbreviation: GF, glucose and fructose.

concentration of DLBS3233 that stimulated the highest GLUT4 expression in 3T3 cells was 5 µg/mL (Figure 3D), and could enhance GLUT4 expression to a 1.9-fold greater extent than in control cells (Figure 3E). This result indicates that DLBS3233 extract significantly increased *GLUT4* expression, leading to increased glucose uptake in cells, as shown in Figure 1.

In addition, the upregulation of *GLUT4* expression by DLBS3233 was compared with that of pioglitazone in the presence and absence of insulin (Figure 3E). It was found that DLBS3233 at the concentration of 5 µg/mL induced the expression of *GLUT4* by up to 2-fold compared with controls, exceeding that of pioglitazone (1.25-fold) and that of insulin alone (1.35-fold).

Effect of DLBS3233 on GLUT4 protein levels

We examined GLUT4 protein levels and showed that DLBS3233 5 µg/mL increased total GLUT4 in adipocytes to an approximately 2.5-fold greater extent than in control cells ($P < 0.05$, Figure 3F). These data are in accordance with the level of GLUT4 expression at the RNA level after DLBS3233 administration, which indicates that DLBS3233 could control GLUT4 at both the RNA level and protein level.

Effect of DLBS3233 on *adiponectin* and *resistin* expression in 3T3-Swiss albino cells

The effect of DLBS3233 on *adiponectin* and *resistin* expression was explored. The administration of DLBS3233 showed an increase of *adiponectin* expression to a 1.7-fold greater extent than in controls, while the administration of pioglitazone did not show a significant effect (Figure 4A).

We also investigated the expression of *resistin* as a marker of insulin resistance in response to DLBS3233 with or without insulin. A decrease in *resistin* gene expression was observed in the DLBS3233-treated group (Figure 4B). These data suggest that insulin resistance in 3T3 cells decreased as expected. In this regard, administration of DLBS3233 5 µg/mL decreased 80% of *resistin* expression compared with the control group, even in the presence of insulin. Moreover, the combination of insulin and DLBS3233 reduced gene expression by more than that achieved by a combination of insulin and pioglitazone.

Effect of DLBS3233 on glucose, triglycerides, total cholesterol, LDL, and HDL levels

The effect of DLBS3233 on blood glucose control was also observed in vivo using animal models. The administration of a high-glucose diet increased the concentration of blood

glucose by up to 41.33% in normal conditions, by 49.02% in 2-hour postprandial conditions, and by 60.22% in overnight fasting conditions. It also increased insulin, total cholesterol, LDL, and triglyceride levels by up to 220.38%, 59.59%, 31.70%, and 61.39%, respectively. On the other hand, HDL levels decreased by up to 17.15%.

Treatment with DLBS3233 9 mg/kg body weight for a further 2 weeks achieved a significant decrease in random glucose (by 29.64%, Figure 5A), postprandial glucose (by 30.62%, Figure 5B), and fasting glucose (by 31.41%, Figure 5B). Similar results were also found for other biochemical parameters, including for insulin (Figure 5D), triglycerides (Figure 5E), total cholesterol (Figure 5F), and LDL levels (Figure 5G), with decreases of 64.71%, 33.78%, 21.36%, and 30.81%, respectively. The levels of these biochemical parameters were lower when compared with those in the insulin-resistant group, and were approximately equal to those reached in normal conditions. Moreover, HDL levels in insulin-resistant rats treated with DLBS3233 were almost the same as normal, and 18.20% higher compared with levels in the insulin-resistant group (Figure 5H).

Furthermore, fasting glucose and insulin levels for each individual rat were compared, and are shown in Figure 5I. Insulin and fasting glucose levels were both increased in Group 2, and as the graph indicates, were far from those seen in the normal condition. However, after DLBS3233 was administered, the fasting glucose and insulin levels became similar to those in the normal condition. This comparison was used further to evaluate fasting glucose and insulin levels in each group, and were expressed by homeostasis model assessment. The calculation result shows that the homeostasis model assessment in the insulin-resistant group was increased up to five-fold, and then decreased significantly after treatment with DLBS3233 (Figure 5J).

Discussion and conclusion

In this gene expression study, we have demonstrated that DLBS3233, a standardized herbal extract containing *L. speciosa* and *C. burmannii*, acts as an insulin sensitizer via modulation of PPAR γ . Initially, we found that the capacity and time course of DLBS3233 glucose uptake was comparable with that of pioglitazone (Figure 1). However, addition of insulin to DLBS3233 did not increase glucose uptake at the 6-hour treatment, although it shortened the time for onset of action to 2 hours as opposed to 4 hours, achieving its maximum uptake in the fourth hour. This suggests that an additional insulin pool is needed for DLBS3233 to work as an insulin sensitizer and activator of glucose uptake. A similar

finding has been found for rosiglitazone, which belongs to the TZD class.¹

TZDs comprise a new class of orally active drugs that are designed to enhance the actions of insulin. These agents reduce insulin resistance by increasing insulin-dependent glucose disposal and reducing hepatic glucose output. Although the precise mechanism of action of these drugs remains unknown, transcriptional changes are observed in tissue culture cells that enhance insulin action. This regulation of gene expression appears to be mediated by the interactions of the TZDs with the PPAR family.¹³

Our results show that DLBS3233 has the capacity to increase *PPARγ* expression (Figure 2C) similar to the TZD class of drugs. The PPARs compose a nuclear receptor sub-family and consists of three isoforms, α , δ , and γ , which are encoded by three separate genes.¹⁴ These are ligand-regulated transcription factors, the main physiological actions of which are mediated by altering gene expression. *PPARγ* is highly expressed in adipose tissue. Activation of *PPARγ* induces adipocyte differentiation and lipid accumulation in adipocytes by modulating numerous genes regulating adipogenesis, lipid uptake, and lipid metabolism. Hence, it can be inferred that DLBS3233 has the same mechanism of action as that of the TZD class in increasing cellular glucose uptake¹⁵ and insulin sensitivity.

Based on these data, we performed a DLBS3233 study of PI3 kinase because *PPARγ* plays an important role in regulating this enzyme, which has a pivotal role in mediating the biological actions of insulin through *IRS-1* and 2.^{11,16} It was found that DLBS3233 enhanced PI3 kinase expression to an even greater extent than pioglitazone (Figure 3B). This finding was confirmed by the increase in tyrosine phosphorylation upstream of PI3 kinase, as well as in *Akt*, a downstream effector of PI3 kinase.

Tyrosine phosphorylation is the beginning of the intracellular signal transduction pathway which activates *PI-3 kinase*.^{17,18} The presence of glucose and insulin will stimulate this phosphorylation. As expected, administration of insulin promotes tyrosine phosphorylation. This experiment also showed that DLBS3233 promotes this phosphorylation (Figure 3A), which is consistent with the previous result showing that DLBS3233 works via the insulin signaling pathway.

Akt, also known as protein kinase B, is a member of the serine/threonine-specific protein kinase family.^{11,12} It is an important signaling molecule in the insulin signaling pathway. It is required for the insulin-induced translocation of *GLUT4* to the plasma membrane.^{12,13} It has been found

previously that impaired insulin-stimulated glucose transport is responsible for reducing the rate of insulin-stimulated muscle glycogen synthesis in patients with type 2 diabetes mellitus.¹⁹ A pathway in which *GLUT4* is expressed on the plasma membrane begins with insulin binding to the receptor in its dimeric form.^{11,16,19} The receptor phosphorylates and subsequently activates *IRS1*, which converts *PIP2* to *PIP3*. *PIP3* is bound to *Akt*, signaling for *PDK1* to phosphorylate *Akt*.¹¹ Once phosphorylated, *Akt* is in its active form and phosphorylates other targets that stimulate *GLUT4* to be expressed on the plasma membrane.¹² This result indicates that DLBS3233 is a stimulator of glucose transport because it upregulates *GLUT4* expression (Figure 3E). This result corresponds with the increase in total *GLUT4* protein levels (Figure 3F).

In addition to its effect on the *PI3/Akt* pathway, DLBS3233 was shown to upregulate adiponectin (Figure 4A) and downregulate resistin (Figure 4B). Adiponectin, which is regulated by *PPARγ*, is a 30 kDa protein containing a short central collagenous region and a C-terminal tumor necrosis factor alpha-like domain.²⁰ It potentiates inhibition of hepatic gluconeogenesis by insulin, and therefore its levels are reduced in obese insulin-resistant subjects and type 2 diabetics.²¹ Additionally, resistin, which is another gene known to be associated with type 2 diabetes, was also observed in this study. It has recently been identified as a novel derived hormone.²² Results of the adiponectin and resistin study are in agreement with our previous observation indicating that the mechanism of action for DLBS3233 is via *PPARγ*, thereby increasing insulin sensitivity and reducing insulin resistance.

The effect of DLBS3233 was further seen in the Wistar rat study. The rats were rendered insulin-resistant by administration of fructose and glucose, leading to uncontrolled insulin action. Fructose stimulates hepatic production of triglycerides by promoting the re-esterification of circulating nonesterified fatty acids and by stimulating de novo fatty acid synthesis. Increased delivery of triglycerides or nonesterified fatty acids to the muscle interferes with the utilization of glucose, impairing insulin action.³ Administration of DLBS3233 to insulin-resistant rats brought the levels of glucose, insulin, lipoproteins, total cholesterol, and triglycerides into the normal range (Figures 5A–5H). Moreover, the homeostasis model assessment index was reduced to normal after DLBS3233 administration, suggesting that DLBS3233 was able to control the insulin resistance (Figures 5I–5J). The homeostasis model assessment is often used to assess insulin resistance and beta cell function, and requires only

fasting glucose and insulin levels.²³ It had high sensitivity and specificity for measuring insulin resistance.²⁴

Taken together, these data suggest that DLBS3233 has the activity to control blood sugar, insulin, and other lipoproteins, including HDL, LDL, triglycerides, and total cholesterol. Currently, clinical trials of DLBS3233 are underway in a number of hospitals. The value of such an herbal drug in the treatment of diabetes in terms of insulin resistance will be meaningful in light of the recent finding that TZDs can actually increase cardiovascular risk in already burdened patients.

Acknowledgments

We thank Veronika Yuliani for her contribution to this work. We are also grateful for the help of Professors Maggy Suhartono, Annemarie Basson, and Audrey Clarissa, and Venni Carolina for careful reading of the manuscript.

Disclosure

The authors report no conflicts of interest in this work.

References

1. Edvardsson U, Bergström M, Alexandersson M, Bamberg K, Ljung B, Dahlöf B. Rosiglitazone (BRL49653), a PPAR γ -selective agonist, causes peroxisome proliferator-like liver effects in obese mice. *J Lipid Res.* 1999;40:1177–1184.
2. Chao L, Marcus-Samuels B, Mason MM, et al. Adipose tissue is required for the antidiabetic, but not for the hypolipidemic effect of thiazolidinediones. *J Clin Invest.* 2000;106:1221–1228.
3. Harati M, Ani M, Messripour M. Effect of vanadyl sulfate on fructose-induced insulin resistance rat. *Iran Biomed J.* 2003;7:179–182.
4. Liu F, Kim J-K, Li Y, Liu X, Li J, Chen X. An extract of *Lagerstroemia speciosa* L has insulin like glucose uptake stimulatory and adipocytes differentiation-inhibitory activities in 3T3-L1 cells. *J Nutr.* 2001;131:2242–2247.
5. Hattori K, Sukenobu N, Sasaki T, et al. Activation of insulin receptors by lagerstroemin. *J Pharmacol Sci.* 2003;93:69–73.
6. Liu X, Kim J-K, Li Y, Li J, Liu F, Chen X. Tannic acid stimulates glucose transport and inhibits adipocyte differentiation in 3T3-L1 cells. *J Nutr.* 2004;135:165–171.
7. Sheng X, Zhang Y, Gong Z, Huang C, Zang YQ. Improved insulin resistance and lipid metabolism by cinnamon extract through activation of peroxisome proliferator-activated receptors. *PPAR Res.* 2008;2008:581348.
8. Anderson RA, Broadhurst CL, Polansky MM, et al. Isolation and characterization of polyphenol type-A polymers from cinnamon with insulin-like biological activity. *J Agric Food Chem.* 2004;52:65–70.
9. Bailey RW. The reaction of pentoses with anthrone. *Biochem J.* 1957;68:669–672.
10. Pickavance LC, Tadayon M, Widdowson PS, Buckingham RE, Wilding JPH. Therapeutic index for rosiglitazone in dietary obese rats: Separation of efficacy and haemodilution. *Br J Pharmacol.* 1999;128:1570–1576.
11. Pessin JE, Saltiel AR. Signaling pathways in insulin action: Molecular targets of insulin resistance. *J Clin Invest.* 2000;106:165–169.
12. Cong LN, Chen H, Li Y, et al. Physiological role of Akt in insulin-stimulated translocation of GLUT4 in transfected rat adipose cells. *Mol Endocrinol.* 1997;11:1881–1890.
13. Saltiel AR, Olefsky JM. Thiazolidinediones in the treatment of insulin resistance and type II diabetes. *Diabetes.* 1996;45:1661–1669.
14. Berger J, Moller DE. The mechanism of action of PPARs. *Annu Rev Med.* 2002;53:409–435.
15. Wu Z, Xie Y, Morrison RF, Bucher NL, Farmer SR. PPAR γ induces the insulin-dependent glucose transporter GLUT4 in the absence of C/EBP α during the conversion of 3T3 fibroblasts into adipocytes. *J Clin Invest.* 1998;101:22–32.
16. Shulman GI. Cellular mechanisms of insulin resistance. *J Clin Invest.* 2000;106:171–176.
17. Chouhury GG, Abboud HE. Tyrosine phosphorylation-dependent PI3 kinase/Akt signal transduction regulates TGF β -induced fibronectin expression in mesangial cells. *Cell Signal.* 2004;16:31–41.
18. Rothenberg PL, Willison LD, Simon J, Wolf BA. Glucose-induced insulin receptor tyrosine phosphorylation in insulin-secreting beta-cells. *Diabetes.* 1995;44:802–809.
19. Cline GW, Petersen KF, Krssak M, et al. Impaired glucose transport as a cause of decreased insulin-stimulated muscle glycogen synthesis in type 2 diabetes. *N Engl J Med.* 1999;341:240–246.
20. Berg AH, Combs TP, Du X, Brownlee M, Scherer PE. The adipocyte-secreted protein Acrp30 enhances hepatic insulin action. *Nat Med.* 2001;7:947–953.
21. Berger JP. Role of PPAR γ , transcriptional cofactor and adiponectin in the regulation of nutrient metabolism, adipogenesis and insulin action: View from the chair. *Int J Obes.* 2005;29:S3–S4.
22. Steppan CM, Bailey ST, Bhat S, et al. The hormone resistin links obesity to diabetes. *Nature.* 2001;409:307–312.
23. Chang AM, Smith MJ, Bloem CJ, Galecki AT, Halter JB, Supiano MA. Limitation of the homeostasis model assessment to predict insulin resistance and beta-cell dysfunction in older people. *J Clin Endocrinol Metab.* 2006;91:629–634.
24. Keskin M, Kurtoglu S, Kendirci M, Atabek ME, Yazici C. Homeostasis model assessment is more reliable than the fasting glucose/insulin ratio and quantitative insulin sensitivity check index for assessing insulin resistance among obese children and adolescents. *Pediatrics.* 2005;115:500–503.

International Journal of General Medicine

Publish your work in this journal

The International Journal of General Medicine is an international, peer-reviewed open-access journal that focuses on general and internal medicine, pathogenesis, epidemiology, diagnosis, monitoring and treatment protocols. The journal is characterized by the rapid reporting of reviews, original research and clinical studies across all disease areas.

Submit your manuscript here: <http://www.dovepress.com/international-journal-of-general-medicine-journal>

Dovepress

A key focus is the elucidation of disease processes and management protocols resulting in improved outcomes for the patient. The manuscript management system is completely online and includes a very quick and fair peer-review system. Visit <http://www.dovepress.com/testimonials.php> to read real quotes from published authors.