






Detection of Viral and Bacterial Respiratory Pathogens Identified by Molecular Methods in COVID-19 Hospitalized Patients and Its Impact on Mortality and Unfavorable Outcomes

Alonso Soto ^{1,2}
 Dante M Quiñones-Laveriano ¹
 Faviola Valdivia ³
 Eduardo Juscamayta-López ³
 Johan Azañero-Haro ²
 Liliana Chambi ²
 Helen Horna ³
 Gladys Patiño ⁴
 Elizabet Guzman ⁴
 Jhony A De la Cruz-Vargas ¹

¹Instituto de Investigaciones en Ciencias Biomédicas, Universidad Ricardo Palma, Lima, Perú; ²Department of Medicine, Hospital Nacional Hipólito Unanue, Lima, Perú; ³Department of Public Health, Instituto Nacional de Salud, Lima, Perú; ⁴Department of Clinical Pathology, Hospital Nacional Hipólito Unanue, Lima, Perú

Purpose: The purpose of this study is to evaluate the frequency of viral and bacterial respiratory pathogens detected by molecular methods in sputum samples of patients hospitalized for COVID-19 and to evaluate its impact on mortality and unfavorable outcomes (in-hospital death or mechanical ventilation).

Patients and Methods: The prospective cohort included patients with diagnosis of COVID-19 hospitalized at Hospital Nacional Hipólito Unanue. Sociodemographic and clinical data were collected from clinical records. Sputum samples were analyzed with the Biofire Filmarray Pneumonia plus[®] respiratory panel. Crude and adjusted associations with unfavorable outcomes were evaluated using logistic regression models.

Results: Ninety-three patients who were able to collect sputum samples were recruited between September 8 and December 28, 2020. The median age was 61.7 years (IQR 52.3–69.8) and 66 (71%) were male. The most frequent symptoms were dyspnea, cough, fever, and general malaise found in 80 (86%), 76 (82%), 45 (48%), and 34 (37%) patients, respectively. Fifty-three percent of patients had comorbidities. Seventy-six (82%) patients received antibiotics prior to admission and 29 (31%) developed unfavorable outcome. Coinfection was evidenced in 38 (40.86%) cases. The most frequently found bacteria were *Staphylococcus aureus*, *Streptococcus agalactiae*, *Haemophilus influenzae* and *Klebsiella pneumoniae* in 11 (11.83%), 10 (10.75%), 10 (10.75%), and 8 (8.6%) cases, respectively. *Streptococcus pneumoniae* was found in one case (1.08%). We neither identify atypical bacteria nor influenza virus. No association was found between the presence of viral or bacterial microorganisms and development of unfavorable outcomes (OR 1.63; 95% CI 0.45–5.82).

Conclusion: A high frequency of respiratory pathogens was detected by molecular methods in patients with COVID-19 pneumonia but were not associated with unfavorable outcomes. No atypical agents or influenza virus were found. The high use antibiotics before admission is a concern. Our data suggest that the use of drug therapy against atypical bacteria and viruses would not be justified in patients hospitalized for COVID-19.

Keywords: SARS-CoV-2, coinfection, molecular biology, mortality, COVID-19

Correspondence: Alonso Soto
 Instituto de Investigaciones en Ciencias Biomédicas, Universidad Ricardo Palma, Av. Alfredo Benavides 5440, Santiago de Surco, Lima, 15039, Perú
 Tel +051 996128953
 Email alonso.soto@urp.edu.pe

Introduction

The COVID-19 pandemic has greatly impacted our society, pushing health systems to the limit. It has been reported that up to 17% of patients with COVID-19 attending emergency wards present serious illness,¹ requiring the use of the Intensive Care Unit (ICU) and, eventually, mechanical ventilation. It is estimated

that mortality from symptomatic COVID-19 can be up to 5%,² depending on populations reported and diagnostic methods used. However, in hospitalized patients, mortality can exceed 20%,^{3,4} reaching around 50% in the Peruvian series.⁵

Known risk factors for severe disease are obesity, hypertension, diabetes mellitus, coronary heart disease, among others.⁶ Noteworthy, the role of co-infections by other respiratory pathogens is still unclear. Although in other viral pneumonias such as influenza, coinfection by bacteria such as *S. pneumoniae* and *S. aureus* play an important role in mortality and complications,^{7,8} studies on COVID-19 are still insufficient and there is no clear evidence to guide empirical antibiotic therapy currently used in many settings.

The prevalence of bacterial and viral coinfection has been reported to be up to 45% in COVID-19 cases.⁹ However, each geographic region has a particular microbiological profile,¹⁰ which could influence clinical characteristics of these coinfections. Since this aspect has not been explored in Latin American countries, it is necessary to study pathogens possibly associated with coinfection in COVID-19 cases. As bacterial cultures are scarce and difficult to perform in a pandemic context, the use of molecular platforms that allow rapid and accurate detection of a wide range of pathogens is an interesting option. Although the cost of such platforms precludes its routine use in constrained-resource settings, they can be used for epidemiological surveillance purposes. The objective of our study was to evaluate the frequency of viral and bacterial respiratory pathogens detected by molecular methods in sputum samples of patients hospitalized for COVID-19 and to evaluate their impact on mortality and unfavorable outcomes including death and mechanical ventilation.

Materials and Methods

Design and Type of Study

This observational cohort study was designed to evaluate the frequency of respiratory pathogens and its association with unfavorable clinical outcomes in patients hospitalized due to COVID-19 pneumonia between September and December 2020 at Hospital Nacional Hipólito Unanue, a reference Hospital in Lima, Peru. Cohort included patients hospitalized in clinical wards specifically devoted for the care of patients with COVID-19 included within the first 2 days of hospital admission. In all of them, sociodemographic and clinical characteristics, including previous use of antibiotics and relevant laboratory results, were obtained from patient's clinical records. Participating patients were invited to collect

a sputum sample for molecular detection of viral and bacterial pathogens. Patients were subsequently followed up until discharge or death. For the main comparison, exposure was defined based on the presence or absence of respiratory pathogens at the time of the initial evaluation of the patient, while the primary outcome included mortality or the need of mechanical ventilation.

Population and Sample Size

The population included hospitalized patients diagnosed with COVID-19 pneumonia at Hospital Nacional Hipólito Unanue between September and December 2020. A non-probabilistic sampling was carried out, successively including eligible participants until the sample size was completed. We calculated sample size for a single proportion with a predefined precision level using the free software openepi (https://www.openepi.com/Menu/OE_Menu.htm). Given the lack of data at the moment of protocol development, it was assumed a coinfection prevalence of $20 \pm 10\%$ and a confidence level of 95%, giving a minimum sample size of 62 participants.

Recruitment Process

Participants were informed about the study and requested an informed consent. Spontaneous sputum samples obtained from hospitalized patients were analyzed for the presence of bacterial and viral respiratory pathogens. We included patients with a diagnosis of COVID-19 confirmed by a positive molecular test or a compatible clinical picture in the presence of a positive serology or tomographic changes suggestive of pneumonia associated with COVID-19. Patients with poor-quality (salivary) sputum samples, who decide to withdraw from the study after being included, or whose medical records did not include information about the outcomes of interest were excluded. One sputum sample per patient was included. No conventional cultures were performed.

Variables

Mortality or need for mechanical ventilation was considered as the primary combined outcome. The independent variables were the viral or bacterial coinfections detected by FilmArray[®] (BioMérieux, Marcy-l'Étoile, France). Respiratory pathogens detected by the platform are shown in Table 1. We also obtained information about sex, age, previous use of antibiotics, and laboratory data including leukocyte count, lymphocyte count, platelet count, aspartate (AST) and alanine (ALT) aminotransferases, albumin, alkaline phosphatase, gamma glutamyl transpeptidase, D-dimer and lactate dehydrogenase (LDH).

Table 1 Respiratory Pathogens Analyzed Using the Molecular Platform FilmArray®

Bacteria	<i>Acinetobacter calcoaceticus-baumannii</i> complex, <i>Klebsiella oxytoca</i> , <i>Serratia marcescens</i> , <i>Enterobacter cloacae</i> complex, <i>Klebsiella pneumoniae</i> group, <i>Staphylococcus aureus</i> , <i>Escherichia coli</i> , <i>Moraxella catarrhalis</i> , <i>Streptococcus agalactiae</i> , <i>Haemophilus influenzae</i> , <i>Proteus spp.</i> , <i>Streptococcus pneumoniae</i> , <i>Klebsiella aerogenes</i> , <i>Pseudomonas aeruginosa</i> and <i>Streptococcus pyogenes</i> .
Atypical Bacteria	<i>Chlamydia pneumoniae</i> , <i>Legionella pneumophila</i> and <i>Mycoplasma pneumoniae</i>
Virus	Adenovirus, human rhinovirus/enterovirus, parainfluenza virus (1 to 4), Coronavirus (229E, HKU1, OC43, NL63), Influenza A (H1, H-2009, H3) respiratory syncytial virus, human metapneumovirus and Influenza B.
Antibiotic Resistance Genes	CTX-M, NDM, mecA/C and MREJ IMP, OXA-48, KPC and VIM

Description of the Procedures and Methods

Sputum samples were placed in sterile 5 mL polypropylene tubes and transported to the National Institute of Health, maintaining the cold chain (2–8°C), for the identification of viral and bacterial etiological agents using the FilmArray® molecular platform (BioMérieux, Marcy-l'Étoile, France). 33 respiratory pathogens were analyzed including 18 bacteria, 9 viruses, and 7 genes associated with antimicrobial resistance (Table 1) using Biofire Filmarray Pneumonia plus (<https://www.biomerieux-diagnostics.com/biofire-filmarray-pneumonia-panel>). The FilmArray molecular methodology is based on a multiplex PCR system certified by the FDA, CE-IVD, and the TGA, integrating 1) purification of genetic material based on magnetic beads; 2) reverse transcription and multiplex PCR, where the target nucleic acids present in the sample are enriched; 3) a nested PCR using primers internalized to the specific products (in triplicate) of the multiplex PCR step; and 4) DNA fusion analysis where a melting curve is generated and the system detects the specific melting temperatures for each etiological agent. This method includes a control of the transcription process directed to a transcript from the yeast *Schizosaccharomyces pombe*. Yeast is lyophilized in the system and rehydrates when the sample is loaded. Additionally, the FilmArray methodology includes a nested PCR control

directed at a target DNA that is lyophilized on the system matrix. The whole process requires only 2 minutes of manipulation, with a total execution time of 1 hour. Its sensitivity and specificity for sputum samples have been calculated at 96.3% and 97.2%, respectively.¹¹

The study included positive patients for COVID-19 confirmed by the molecular RT-PCR method at the National Institute of Health or with a compatible clinical picture and a positive rapid test for IgM antibodies or a bilateral ground glass imaging tomography compatible with pneumonia associated to COVID-19. The information about the outcomes was obtained from the review of the hospital's medical records.

RT-qPCR SARS-CoV-2

RT-qPCR assays were performed at the National Institute of Health - Peru (NIH-Peru) following the Charité-Berlin protocol,¹² according to PAHO's recommendations.¹³ Briefly, RT-qPCR targeting the SARS-CoV-2-specific RNA-dependent RNA polymerase (RdRp) gene and glyceraldehyde-3-phosphate dehydrogenase gene (glyceraldehyde-3-phosphate dehydrogenase—GAPDH) (internal control), was performed in a 20 µL reaction mixture containing 5 µL of template RNA and the primers/probes (Table 2) in Capital qPCR Probe Mix 4X (Biotechrabbit

Table 2 Primers Sequences and Probes for RT-qPCR Target Genes for Detection of SARS-CoV-2

Gene	Primer/Probe	Sequence 5'→ 3'
RdRp	RdRp_SARSr-F RdRp_SARSr-R RdRp_SARSr-P2	GTGARATGGTCATGTGTGGCGG CARATGTTAAASACACTATTAGCATA FAM-CAGGTGGAACCTCATCAGGAGATGC- BHQ1
GAPDH	GAPDH_F GAPDH_R GAPDH_P	GTGAAGGTCGGAGTCAACGG TCAATGAAGGGGTCATTGATG ROX – CGCCTGGTCAACAGGGTCGC- BHQ2

Note: Detection of 2019 novel coronavirus (2019-nCoV) by real-time RT-PCR. Data from Corman et al.¹²

GmbH, Hennigsdorf, Germany) using the Rotor Gene Q thermal cycler (Qiagen GmbH, Hilden, Germany).

Data Analysis and Processing

The data were entered into a database in Microsoft Excel and analyzed using the statistical package STATA v15 for Windows (StataCorp. 2017. Stata Statistical Software: Release 15. College Station, TX: StataCorp LLC). Numerical variables were presented as median and interquartile range (IQR). Categorical variables were presented as frequencies and percentages. The percentage of respiratory pathogens was determined by dividing the number of patient cases in which one or more respiratory pathogens were identified by the total number of patients included. The association between the presence of respiratory bacterial or viral pathogens and the main outcome was analyzed using the Chi-square statistic or the Fisher's exact test. The association with numerical variables was analyzed with Student's t or Mann Whitney test according to the distribution of the data. In addition, an exploratory multivariate analysis was performed using multiple logistic regression to explore the association between the presence of respiratory pathogens and unfavorable outcomes, adjusted for possible confounding variables. Finally, the association between the presence of coinfection with any bacteria and the time until the development of unfavorable outcomes was evaluated, comparing the survival curves using the log rank test. A value of $p < 0.05$ was considered statistically significant.

Ethical Aspects

The protocol was approved by ethics committees of the Peruvian National Institute of Health (090–2020-CIEI_INS) and Universidad Ricardo Palma (PI-018-2020). Written informed consent was obtained from all participants before recruitment. The study was conducted in accordance with the Declaration of Helsinki.

Results

Ninety-three patients were recruited between September 8 and December 28, 2020. The median age was 61.7 years (IQR 52.3 to 69.8) and 71.0% were males. The most frequent symptoms (Tables 3 and 4) were dyspnea (86.0%), cough (81.7%), fever (48.4%) and general malaise (36.6%). 52.7% of patients presented some comorbidity, the most frequent being arterial hypertension (21.5%) and diabetes mellitus (18.3%). Most of the patients received prior medication. The most

widely used drug was ivermectin (72.0%). 81.7% had received at least one antibiotic and 68.8% received 2 or more antibiotics. The most widely used antibiotic was azithromycin (62.4%). Most of patients presented bilateral interstitial infiltrates on the chest radiography (Tables 5 and 6). Sixty-nine (74.2%) patients had a diagnosis confirmed by molecular testing. Twenty-nine patients (31.2%) developed unfavorable outcomes (death or mechanical ventilation) of which 20 (21.5%) died, and 13 (14%) required mechanical ventilation.

Respiratory pathogens were identified in 38 (40.9%) cases (Table 7), bacterial pathogens were found in 37 and viral pathogens in three cases. The most frequently found bacteria was *Staphylococcus aureus* (11.8%), followed by *Streptococcus agalactiae* (10.8%), *Haemophilus influenzae* (10.8%), *Klebsiella pneumoniae* (8.6%), *Escherichia coli* (6.5) and *Enterobacter cloacae* (5.4). *Streptococcus pneumoniae* was found in only 1 case (1.1%). We did not find cases of atypical bacteria such as *Mycoplasma pneumoniae*, *Chlamydia pneumoniae*, or *Bordetella pertussis* nor influenza, parainfluenza or respiratory syncytial virus infection.

We did not find association between the presence of coinfection by any specific viral and/or bacterial microorganism and attaining the primary outcome. We neither found association between having coinfection as a whole nor having the primary outcome. In the crude analysis, the OR for the association between coinfection by pathogens was 1.03 (95% CI: 0.42–2.52; $p = 0.9$). In the adjusted analysis (Tables 8 and 9), the result remained non-significant (OR 1.63; 95% CI 0.45–5.82; $p = 0.5$). The same was found in the sub-analysis restricted to mortality, where there was no significant association (OR 1.24; 95% CI 0.46–3.37; $p = 0.7$). Finally, we did not find association between the presence of any bacteria and the time until development of the primary outcome ($p = 0.98$) in survival curves (Figure 1).

The bivariate analysis found that the presence of sore throat, D-dimer, leukocytes, and LDH on admission were associated with a higher frequency of unfavorable outcomes. Higher Lymphocyte levels, on the other hand, were associated with a lower frequency of unfavorable outcomes. However, in the adjusted analysis, only LDH levels were independently associated with unfavorable outcomes (OR 1.005; 95% CI 1.001–1.010; $p = 0.001$). Results were similar when the analysis was restricted to the 69 cases having diagnosis confirmed through molecular methods (Tables 3–9). The patients with the highest number of pathogens presented a non-significant trend (p

Table 3 Sociodemographic Characteristics, Symptoms, Comorbidities, and Treatments Before Admission in Patients Hospitalized with COVID-19 Pneumonia (n=93)

Variable	Total (n=93)	Unfavorable Outcome (n=29)	Non Unfavorable Outcome (n=64)	p value
Age in years	61.7 (52.32–69.77)	66.16 (52.99–72.86)	61.4 (51.53–67.78)	0.113
Male gender	66 (70.97)	22(75.86)	44 (68.75)	0.486
Time of symptoms	7 (6–10)	7 (7–10)	7 (6–10)	0.908
Symptoms				
Dyspnea	80 (86.02)	28 (96.55)	52 (81.25)	0.057
Cephalalgia	23 (24.73)	8 (27.59)	15 (24.1)	0.668
Cough	76 (81.72)	23 (79.31)	53 (82.81)	0.686
Fever	45 (48.39)	17 (58.62)	28 (43.75)	0.184
Throat pain	19(20.43)	10(34.48)	9(14.06)	0.024
Abdominal pain	2 (2.15)	1 (3.45)	1 (1.56)	0.569
Diarrhea	7 (7.53)	1 (3.45)	6 (9.38)	0.428
Nasal discharge	2 (2.15)	0 (0)	2 (3.13)	0.336
Dysgeusia or anosmia	4 (4.30)	3 (10.34)	1 (1.56)	0.088
General malaise	34 (36.56)	8 (27.59)	26 (40.63)	0.226
Other symptoms	14 (15.05)	4 (13.79)	10 (15.63)	0.819
Comorbidities				
Diabetes mellitus	17 (18.28)	5 (17.24)	12 (18.75)	0.862
Hypertension arterial	20 (21.51)	7 (24.14)	13(20.31)	0.677
Obesity	8 (8.60)	3 (10.34)	5 (7.81)	0.687
Other comorbidities	15 (16.13)	5 (17.24)	10 (15.63)	0.844
Any comorbidity	49 (52.69)	15 (51.72)	34 (53.13)	0.900
Previous treatments				
Azithromycin	58 (62.37)	17 (58.62)	41 (64.06)	0.616
Ivermectin	67 (74.04)	23 (79.31)	44 (68.75)	0.293
Corticosteroids	24 (26.37)	7 (24.14)	17 (27.42)	0.741
Ceftriaxone	20 (21.51)	7 (24.14)	13 (20.31)	0.677
Other antibiotic	7 (7.53)	3 (10.34)	4 (6.25)	0.488
Any antibiotic	76 (81.72)	24 (82.76)	52 (81.25)	0.862
2 or more antibiotics	64 (68.82)	19 (65.52)	45 (70.31)	0.644
Enoxaparin	7 (7.69)	4 (13.79)	3 (4.84)	0.135
NSAIDS/ASA	2 (2.20)	1 (3.45)	1 (1.61)	0.578
Hydroxychloroquine	1 (1.10)	1 (3.45)	0 (0.00)	0.319

Abbreviation: NSAIDS/ASA, Non-steroidal anti-inflammatories/Acetylsalicylic acid.

= 0.12) to a higher frequency of previous antibiotics (Figure 2). Among cases with a pathogenic bacteria identified, antibiotic-resistance genes were found in six (14.2%) cases, two in those with unfavorable outcomes and in four among those not having unfavorable outcomes (p=0.97).

Discussion

Our study found a high prevalence (41%) of bacterial pathogens in sputum samples from patients admitted for

pneumonia associated with COVID-19 in a Peruvian referral hospital. However, we cannot ascertain that their presence implies an active role in lung damage. Moreover, the main germs involved in most cases of community-acquired pneumonia such as *S. pneumoniae*, *M. pneumoniae* or influenza virus¹⁴ had very low frequency or were not found.

This presence of respiratory pathogens in 41% of cases in our study lies in the range reported in patients with COVID-19, which has been very variable in different studies, from 0.6% to almost 50% depending on

Table 4 Sociodemographic Characteristics, Symptoms, Comorbidities, and Treatments Before Admission in Patients Hospitalized with COVID-19 Pneumonia Confirmed by Molecular Testing (n=69)

Variable	Total (n=69)	Unfavorable Outcome (n=24)	Non Unfavorable Outcome (n=45)	p value
Age in years	61.2 (51.63–70.01)	67.34 (52.01–73.33)	60.05 (46.63–67.56)	0.057
Male gender	52 (75.36)	19 (79.17)	33 (73.33)	0.592
Time of symptoms	7 (6–10)	7 (7–10)	7 (5–10)	0.629
Symptoms				
Dyspnea	62 (89.86)	23 (95.83)	39 (86.67)	0.408
Cephalalgia	19 (27.54)	7 (29.17)	12 (26.67)	0.825
Cough	58 (84.06)	18 (75.00)	40 (88.89)	0.133
Fever	34 (49.28)	14 (58.33)	20 (44.44)	0.272
Throat pain	17 (24.64)	10 (41.67)	7 (15.56)	0.017
Abdominal pain	1 (1.45)	1 (4.17)	0 (0.00)	0.348
Diarrhea	4 (5.80)	1 (4.17)	3 (6.67)	1.000
Nasal discharge	1 (1.45)	0 (0)	1 (2.22)	1.000
Dysgeusia or anosmia	4 (5.80)	3 (12.50)	1 (2.22)	0.118
General malaise	30 (43.48)	8 (33.33)	22 (48.89)	0.214
Other symptoms	11 (15.94)	4 (16.67)	7 (15.56)	0.904
Comorbidities				
Diabetes mellitus	10 (14.49)	5 (20.83)	5 (11.11)	0.275
Hypertension arterial	17 (24.64)	6 (25.00)	11 (24.44)	0.959
Obesity	7 (10.14)	3 (12.50)	4 (8.89)	0.687
Other comorbidities	11 (15.94)	5 (20.83)	6 (13.33)	0.418
Any comorbidity	36 (52.17)	14 (58.33)	22 (48.89)	0.454
Previous treatments				
Azithromycin	50 (72.46)	16 (66.67)	34 (75.56)	0.431
Ivermectin	55 (79.71)	19 (79.17)	36 (80.00)	0.935
Corticosteroids	20 (29.41)	7 (29.17)	13 (29.55)	0.974
Ceftriaxone	15 (21.74)	6 (25.00)	9 (20.00)	0.632
Other antibiotic	6 (8.70)	3 (12.0)	3 (6.67)	0.412
Any antibiotic	62 (89.86)	20 (83.33)	42 (93.33)	0.227
2 or more antibiotics	53 (76.81)	17 (70.83)	36 (80.00)	0.390
Enoxaparin	6 (8.82)	3 (12.50)	3 (6.82)	0.658
NSAIDS/ASA	1 (1.47)	0 (0.00)	1 (2.27)	1.000
Hydroxychloroquine	1 (1.47)	1 (4.17)	0 (0.00)	0.353

definitions and diagnostic methods employed.⁹ Zhou et al reported that 50% of fatal cases had secondary infections in a study of 191 patients with COVID-19 in China,³ which is comparable to the prevalence obtained in our study. Notwithstanding, this prevalence is notoriously high when compared with other studies based on conventional cultures. Two factors that may have influenced this are the enormous frequency of antibiotic medication prior to the admission of patients and the high sensitivity for detection of pathogens of the molecular technique used. In particular, the high use of azithromycin is a factor that can

affect the alteration of the usual bacterial flora, facilitating colonization and subsequent infection by bacterial pathogens. On the other hand, the molecular tool used is very sensitive, presenting a greater detection capacity than conventional methods.¹⁵ Although this molecular platform has been used in few studies, a recent publication about cases of severe COVID-19 found positivity in 28 of 99 hospitalized cases (28.2%).¹⁶ It should be noted that the detection of pathogens by molecular methods in sputum samples does not necessarily imply that the identified germs are responsible for a bacterial infection, and they could only

Table 5 Physical Examination and Radiological Findings in Patients Hospitalized with COVID-19 Pneumonia (n=93)

Variable	Total (n=93)	Unfavorable Outcome (n=29)	Non Unfavorable Outcome (n=64)	p value
Physical examination				
Systolic blood pressure (mm Hg)	112.5 (109–130)	120 (110–130)	112 (108–130)	0.589
Diastolic blood pressure (mm Hg)	70 (70–80)	70 (70–80)	70 (70–78)	0.237
Heart rate	98 (87.5–109)	97 (89–110)	99 (87–108)	0.668
Respiratory rate	25 (24–28)	26 (24–28)	25 (24–28)	0.252
Temperature	37 (37–37)	37 (37–37)	37 (37–37)	0.883
Oxygen saturation	90 (85–92)	87 (82–92)	90 (87–92)	0.062
Laboratory Findings				
Leucocytes ($\times 10^3/\mu\text{L}$)	12.30 (8.90–15.20)	14.70 (11.20–15.70)	11.15 (8.65–14.70)	0.043
Lymphocytes ($\times 10^3/\mu\text{L}$)	0.70 (0.50–1.10)	0.50 (0.40–0.70)	0.80 (0.60–1.20)	0.003
D-Dimer	0.92 (0.6–1.83)	1.20 (0.69–4.53)	0.85 (0.5–1.37)	0.022
Lactate Dehydrogenase	325 (253–419)	397 (326–554)	290 (228–361)	<0.001
C-reactive protein	11.54 (5.07–18.41)	11.30 (5.36–18.55)	11.75 (5.03–17.84)	0.938
Aspartate aminotransferase	39 (27–54.9)	41 (31–53)	38 (27–54.9)	0.580
Alanine aminotransferase	44.8 (25–69.7)	59 (32–70)	40.5 (25–61)	0.236
Urea	32 (23.9–41)	37 (31.5–44.5)	30 (22–38)	0.007
Radiographic findings				
Bilateral compromise	76 (81.70)	25 (86.21)	51 (76.69)	0.569
Unilateral interstitial pattern	19 (20.65)	6 (20.69)	13 (20.63)	0.801
Bilateral interstitial pattern	65 (70.65)	21 (72.41)	44 (69.84)	0.801
Alveolar pattern	15 (16.30)	7 (24.14)	8 (12.70)	0.168
Diagnosis of COVID-19	69 (74.19)	24 (82.76)	45 (70.31)	0.254
Positive molecular test (%)	18 (19.35)	5 (17.24)	13 (20.31)	
Positive serology + compatible clinical picture (%)	6 (6.45)	0 (0.00)	6 (9.38)	
Typical CT scan + compatible clinical picture (%)				

Notes: Numerical variables are shown as median and interquartile range; Categorical variables are shown as frequencies and percentages.

Table 6 Physical Examination and Radiological Findings in Patients Hospitalized with COVID-19 Pneumonia Confirmed by Molecular Testing (n=69)

Variable	Total (n=69)	Unfavorable Outcome (n=24)	Non Unfavorable Outcome (n=45)	p value
Physical examination				
Systolic blood pressure (mm Hg)	120 (111-130)	120 (110-130)	119 (112-130)	0.869
Diastolic blood pressure (mm Hg)	70 (70-79)	70 (70-80)	70 (70-78)	0.437
Heart rate	99 (88.5-105)	95.5 (87.5-102.5)	100 (89-106.5)	0.510
Respiratory rate	25 (24-28)	26 (24-28)	25 (24-28)	0.328
Temperature	37 (37-37)	37 (37-37)	37 (37-37.15)	0.410
Oxygen saturation	90 (85-91.5)	88 (82-90)	90 (87-92)	0.117
Laboratory findings				
Leucocytes (x10 ³ /μL)	12.00 (8.10-15.00)	14.50 (8.55-15.50)	10.60 (8.10-14.70)	0.188
Lymphocytes (x10 ³ /μL)	0.70 (0.50-1.00)	0.60 (0.50-0.80)	0.80 (0.50-1.00)	0.075
D-Dimer	0.87 (0.59-1.55)	0.94 (0.62-4)	0.72 (0.49-1.3)	0.094
Lactate Dehydrogenase	322.5 (241-395)	368 (321-545)	276 (192-355)	0.002
C-reactive protein	11.67 (5.34-17.73)	10.79 (5.36-18.41)	12.04 (5.32-17.68)	0.656
Aspartate aminotransferase	41 (28-54.9)	42 (26.5-56.5)	40 (28-54.9)	0.779
Alanine aminotransferase	45 (25-74)	57.50 (27.5-72)	42 (25-85)	0.574
Urea	31.67 (24-39)	37 (31-42)	29.50 (22.50-36)	0.022
Radiographic findings				
Bilateral compromise	60 (86.96)	21 (87.50)	39 (86.67)	0.922
Unilateral interstitial pattern	7 (10.29)	3 (12.50)	4 (9.09)	0.691
Bilateral interstitial pattern	54 (79.41)	19 (79.17)	35 (79.55)	0.971
Alveolar pattern	9 (13.24)	4 (16.7)	5 (11.36)	0.537

Notes: Numerical variables are shown as median and interquartile range; Categorical variables are shown as frequencies and percentages.

Table 7 Respiratory Pathogens Found in Patients Hospitalized with COVID-19 Pneumonia

Pathogen	All Patients				Molecular Proven Diagnosis				p value
	Total (n=93)	Unfavorable Outcome (n=29)	Non Unfavorable Outcome (n=64)	p value	Total (n=69)	Unfavorable Outcome (n=24)	Non Unfavorable Outcome (n=45)	p value	
<i>S. aureus</i>	11 (11.83)	2 (6.90)	9 (14.06)	0.493	8 (11.59)	2 (8.33)	6 (13.33)	0.537	
<i>S. agalactiae</i>	10 (10.75)	3 (10.34)	7 (10.94)	0.932	7 (10.14)	2 (8.33)	5 (11.11)	1.000	
<i>H. influenzae</i>	10 (10.75)	4 (13.79)	6 (9.38)	0.497	9 (13.04)	4 (16.67)	5 (11.11)	0.514	
<i>K. pneumoniae</i>	8 (8.6)	0 (0)	8 (12.5)	0.054	7 (10.14)	0 (0)	7 (15.56)	0.087	
<i>E. coli</i>	6(6.45)	3 (10.34)	3 (4.69)	0.371	6(8.70)	3 (12.50)	3 (6.67)	0.412	
<i>E. cloacae</i>	5 (5.38)	3 (10.34)	2 (3.13)	0.173	4 (5.80)	2 (8.33)	2 (4.44)	0.606	
<i>S. marcescens</i>	2 (2.15)	0 (0.00)	2 (3.13)	1.00	2 (2.90)	0 (0.00)	2 (4.44)	0.540	
<i>P. aeruginosa</i>	2 (2.15)	1 (3.45)	1 (1.56)	0.529	2 (2.90)	1 (4.7)	1 (2.22)	1.000	
<i>S. pneumoniae</i>	1 (1.08)	0 (0.00)	1 (1.08)	1.00	1 (1.45)	0 (0)	1 (2.22)	1.000	
<i>A. calcoaceticus-baumannii</i>	1 (1.08)	0 (0.00)	1 (1.56)	1.00	0 (0.00)	0 (0.00)	0 (0.00)	-	
Any bacteria	37 (39.78)	12 (41.38)	25 (39.06)	0.833	30 (43.48)	10 (41.67)	20 (44.44)	0.825	
Virus*	3 (3.23)	1 (3.45)	2 (3.13)	1.00	0 (0.00)	0 (0.00)	0 (0.00)	-	
Any pathogen	38 (40.86)	9 (40.9)	23 (37.7)	0.80	30 (43.48)	10 (41.67)	20 (44.44)	0.825	

Note: *Two cases of rhinovirus and one case of adenovirus.

Table 8 Association Between the Presence of Respiratory Pathogens in Sputum Samples and Unfavorable Outcomes in Patients Hospitalized with COVID-19 Pneumonia (n=93): Results of Crude and Adjusted Logistical Regression Models (Whole Population)

Variable	ORc	95% CI	p value	ORa	95% CI	P value
Any respiratory pathogen	1.032	0.423–2.516	0.945	1.626	0.454–5.817	0.455
Sore throat	3.216	1.136–9.106	0.028	2.865	0.715–11.483	0.137
WBC × 10 ³	1.079	0.983–1.183	0.110	1.050	0.928–1.189	0.436
Lymphocytes × 10 ³	0.194	0.054–0.697	0.012	0.394	0.107–1.442	0.159
D-Dimer	1.253	1.017–1.543	0.034	1.006	0.850–1.326	0.598
Lactate dehydrogenase	1.006	1.002–1.010	0.001	1.005	1.001–1.010	0.001
Urea	1.019	0.992–1.046	0.165	1.022	0.990–1.057	0.180

Abbreviations: OR_c, Crude Odds Ratio; OR_a, adjusted Odds Ratio; 95% CI, 95% confidence interval; WBC, White blood cell count.

Table 9 Association Between the Presence of Respiratory Pathogens in Sputum Samples and Unfavorable Outcomes in Patients Hospitalized with COVID-19 Pneumonia Confirmed by Molecular Testing (n=69): Results of Crude and Adjusted Logistical Regression Models

Variable	ORc	95% CI	p value	ORa	95% CI	P value
Any respiratory pathogen	0.893	0.328–2.432	0.825	1.988	0.464–8.509	0.354
Sore throat	3.878	1.235–12.171	0.020	4.796	0.894–25.70	0.067
WBC × 10 ³	1.000	0.999–1.000	0.481	1.000	0.999–1.000	0.580
Lymphocytes × 10 ³	0.999	0.997–1.000	0.083	0.999	0.998–1.001	0.658
D Dimer	1.217	0.914–1.618	0.178	0.869	0.578–1.306	0.499
Lactate dehydrogenase	1.005	1.002–1.009	0.005	1.007	1.001–1.011	0.013
Urea	1.041	0.999–1.084	0.058	1.046	0.991–1.103	0.101

Abbreviations: OR_c, Crude Odds Ratio; OR_a, adjusted Odds Ratio; 95% CI, 95% confidence interval; WBC, White blood cell count.

be colonizers. The presence of coinfection should be demonstrated by clinical criteria in addition to microbiological findings. Future prospective studies could complement these findings by adding metagenomic sequencing to better characterize the microbiome of these patients and give clues of which organisms are colonizing and which are indeed producing additional pathogenesis in COVID-19 patients. Interestingly, studies on metagenomic sequencing have found that *S.galactiae*, one of the most common pathogens found in our study were enriched in COVID-19 patients and could stimulate the expression of ACE-2 of vero cells in vitro which may have a role in SARS CoV-2 infection.¹⁷

The finding of respiratory pathogens was not associated with the presence of unfavorable outcomes, defined in our study as the need for mechanical ventilation or

death. This is consistent with other published studies.¹⁸ However, our findings could indirectly suggest that the presence of respiratory pathogens may be associated with a higher frequency of hospitalization, as studies carried out in outpatients showed lower rates of coinfection.¹⁹ This hypothesis should be corroborated with prospective outpatient coinfection studies designed to know if the presence of those pathogens increases the risk of hospitalization.

The almost absence of *S. pneumoniae*, considered the most frequent germ in cases of bacterial pneumonia, is striking. It was only isolated in one of the cases. This is possibly due to the high frequency of previous antimicrobial treatment. However, our findings probably imply that empirical pneumococcal therapy may not necessarily be justified. On the other hand, we did not find any case of

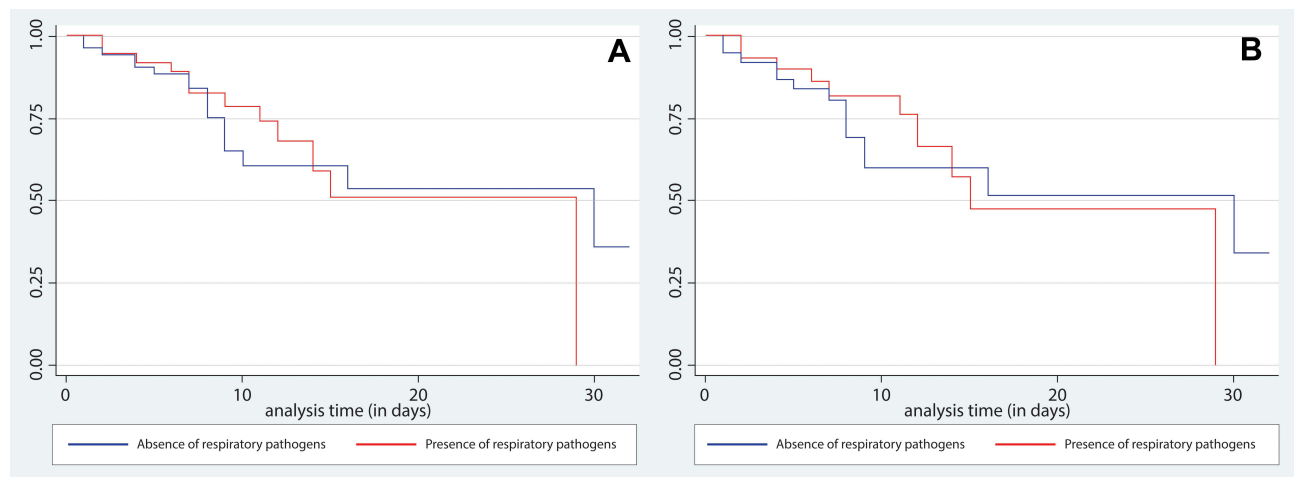


Figure 1 Comparison of Kaplan Meier Curves for survival with and without evidence of respiratory pathogens in sputum samples. Panel (A) (left) shows overall results and panel (B) (right) shows the analysis restricted to those patients with molecular confirmed diagnosis.

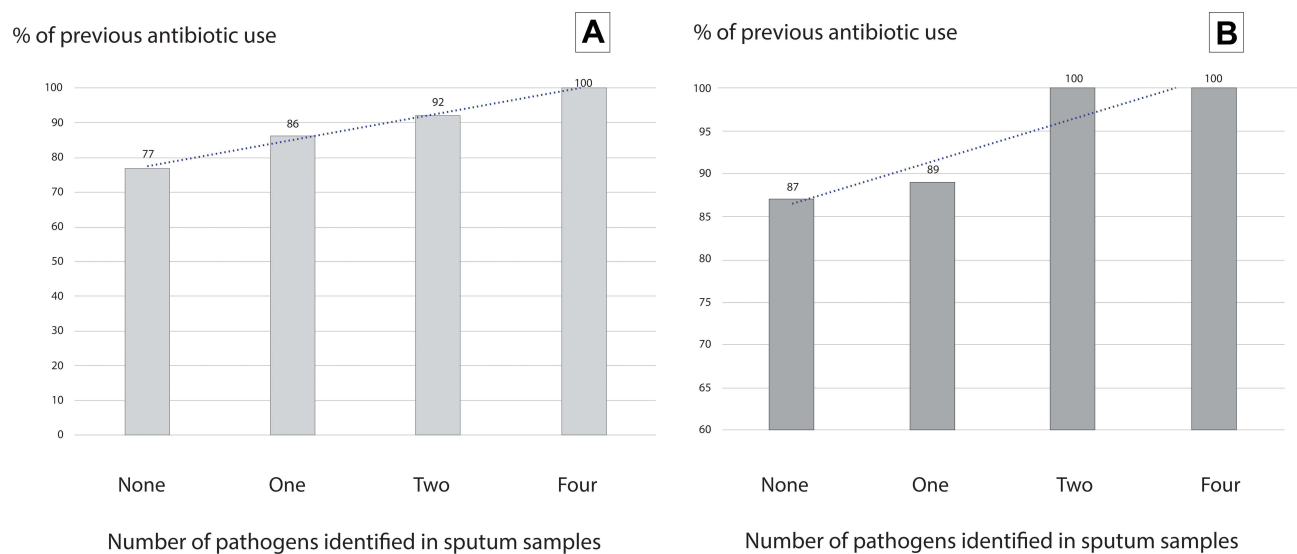


Figure 2 Percentage of previous use of antibiotics according to the number of pathogens identified in sputum samples in patients with diagnosis of COVID-19 pneumonia. Panel (A) (left) shows overall results and panel (B) (right) shows the analysis restricted to those patients with molecular confirmed diagnosis.

infection by atypical germs including those of the genus *Mycoplasma*, *Chlamydia* or *Legionella*. Although this may be related to the high frequency of use of azithromycin, a drug with action against atypical germs, we consider that our findings suggest that empirical therapy against atypical germs should not be necessary either. No cases of influenza virus infection were found. This result is supported by previous studies in China where they reported a low prevalence (0.4%) of coinfection of Influenza viruses with SARS-CoV-2.¹⁹ This finding is also particularly important, because many clinicians, and even therapeutic guidelines used in some hospitals^{20,21} recommend antiviral treatment

against influenza as part of the empirical therapy in cases of COVID-19. Our findings give clear evidence against this recommendation. This is consistent with other studies that do not show a high frequency of viral coinfection.^{22,23}

One of the most important limitations for the interpretation of our results was the massive use of drugs before hospitalization, in particular antibiotics such as azithromycin, which can affect colonization of the upper respiratory tract and, therefore, affect the generalizability of our results. However, this is the (unfortunately) most common scenario faced by the clinician in Latin American countries. This is particularly relevant, as resistance induction and bacterial colonization are a growing

concern. Additionally, the indiscriminate use of ivermectin -a drug without evidence of efficacy against COVID-19- is striking but recommended by many physicians and even considered in the Peruvian ministry of health recommendations,²⁴ although not endorsed by the recommendations of national²⁵ or international^{26–28} medical societies. Another limitation was the small sample size, which can increase the type II error, implying a small power for detecting hypothesized associations. Finally, among variables not included in the analysis, the use of antibiotics during hospitalization may have been associated with outcomes. However, we only evaluated predictors at admission.

The absence of influenza viruses and atypical bacteria means that treatment with antivirals and agents with action against atypical bacteria should not be offered routinely to patients hospitalized for COVID-19 associated pneumonia, and this should be immediately adjusted in the national recommendations. In case of suspected bacterial co-infection or superinfection and given the relatively high frequency of *H. influenzae*, *K. pneumoniae* and methicillin-sensitive *S. aureus*, the use of third-generation cephalosporins such as ceftriaxone or beta-lactams associated with beta-lactamase inhibitors, such as associated amoxicillin to clavulanic acid or ampicillin/sulbactam, could be alternatives to consider in the hospitalized patient. Although we found a relatively low frequency of drug resistance genes, we cannot make definitive recommendations about this aspect, as we did not formally measure drug susceptibility patterns and our results should be viewed in the context of a high use of antibiotics before admission.

Regarding the presence of other factors related to poor outcomes, LDH levels, lymphopenia, leukocytosis, and high levels of D-dimer were associated with a higher frequency of mortality and unfavorable outcomes. Although evaluation of these factors was not the primary objective of our study, the results were consistent with other studies.⁵

Conclusion

We found a high frequency of bacterial respiratory pathogens detected by molecular methods in sputum samples from patients hospitalized with COVID-19 pneumonia. In contrast, the frequency of respiratory viruses was low. The high frequency of previous antibiotic use is a concern. The indiscriminate use of antibiotics in outpatients should be avoided, as it seems to directly affect the high rate of bacterial pathogens found. Finally, our data suggest that the use of therapy against atypical germs and against viruses is not justified in hospitalized patients with COVID-19 pneumonia.

Funding

The research was funded by FONDECYT through the project “Coinfección por patógenos respiratorios virales y bacterianos detectados por métodos moleculares en pacientes hospitalizados por COVID-19 y su impacto en la mortalidad y desenlaces desfavorables” (Convenio N° 044-2020-FONDECYT) and Research Vice-chancellor of Universidad Ricardo Palma.

Disclosure

The authors report no conflicts of interest in this work.

References

1. Tian S, Hu N, Lou J, et al. Characteristics of COVID-19 infection in Beijing. *J Infect.* 2020;80(4):401–406. doi:10.1016/j.jinf.2020.02.018
2. Li L, Huang T, Wang Y, et al. COVID-19 patients' clinical characteristics, discharge rate, and fatality rate of meta-analysis. *J Med Virol.* 2020;92(6):577–583. doi:10.1002/jmv.25757
3. Zhou F, Yu T, Du R, et al. Clinical course and risk factors for mortality of adult inpatients with COVID-19 in Wuhan, China: a retrospective cohort study. *The Lancet.* 2020;395(10229):1054–1062. doi:10.1016/S0140-6736(20)30566-3
4. Jalili M, Payandemehr P, Saghaei A, Sari HN, Safikhani H, Kolivand P. Characteristics and mortality of hospitalized patients with COVID-19 in Iran: a national retrospective cohort study. *Ann Intern Med.* 2021;174(1):125–127. doi:10.7326/M20-2911.
5. Mejía F, Medina C, Cornejo E, et al. Oxygen saturation as a predictor of mortality in hospitalized adult patients with COVID-19 in a public hospital in Lima, Peru. *PLoS One.* 2020;15(12):e0244171. doi:10.1371/journal.pone.0244171
6. Jordan RE, Adab P, Cheng KK. Covid-19: risk factors for severe disease and death. *BMJ.* 2020;368:m1198. doi:10.1136/bmj.m1198
7. Martin-Loeches I, Schultz MJ, Vincent JL, et al. Increased incidence of co-infection in critically ill patients with influenza. *Intensive Care Med.* 2017;43(1):48–58. doi:10.1007/s00134-016-4578-y
8. Rudd JM, Ashar HK, Chow VT, Teluguakula N. Lethal synergism between influenza and Streptococcus pneumoniae. *J Infect Pulm Dis.* 2016;2(2). doi:10.16966/2470-3176.114.
9. Lansbury L, Lim B, Baskaran V, Lim WS. Co-infections in people with COVID-19: a systematic review and meta-analysis. *J Infect.* 2020;81(2):266–275. doi:10.1016/j.jinf.2020.05.046
10. Frost I, Van Boeckel TP, Pires J, Craig J, Laxminarayan R. Global geographic trends in antimicrobial resistance: the role of international travel. *J Travel Med.* 2019;26(8):taz036. doi:10.1093/jtm/taz036
11. Lee SH, Ruan SY, Pan SC, Lee TF, Chien JY, Hsueh PR. Performance of a multiplex PCR pneumonia panel for the identification of respiratory pathogens and the main determinants of resistance from the lower respiratory tract specimens of adult patients in intensive care units. *J Microbiol Immunol Infect.* 2019;52(6):920–928. doi:10.1016/j.jmii.2019.10.009
12. Corman VM, Landt O, Kaiser M, et al. Detection of 2019 novel coronavirus (2019-nCoV) by real-time RT-PCR. *Euro Surveill.* 2020;25(3):2000045. doi:10.2807/1560-7917.ES.2020.25.3.2000045
13. Pan American Health Organization. Laboratory guidelines for detection and diagnosis of the novel coronavirus (2019-nCoV) infection. February 1, 2020. Available from: <https://iris.paho.org/bitstream/handle/10665.2/51895/ncov-lab-recommendations-en.pdf?sequence=1&isAllowed=y>. Accessed June 23, 2021.

14. Cilloniz C, Martin-Loeches I, Garcia-Vidal C, San Jose A, Torres A. Microbial etiology of pneumonia: epidemiology, diagnosis and resistance patterns. *Int J Mol Sci.* 2016;17(12):2120. doi:10.3390/ijms17122120
15. Kaku N, Hashiguchi K, Iwanaga Y, et al. Evaluation of FilmArray respiratory panel multiplex polymerase chain reaction assay for detection of pathogens in adult outpatients with acute respiratory tract infection. *J Infect Chemother.* 2018;24(9):734–738. doi:10.1016/j.jiac.2018.05.006
16. Kolenda C, Ranc AG, Boisset S, et al. Assessment of respiratory bacterial coinfections among severe acute respiratory syndrome coronavirus 2-positive patients hospitalized in intensive care units using conventional culture and biofire, filmarray pneumonia panel plus assay. *Open Forum Infect Dis.* 2020;7(11):ofaa484. doi:10.1093/ofid/ofaa484.
17. Xiong D, Muema C, Zhang X, et al. Enriched Opportunistic Pathogens Revealed by Metagenomic Sequencing Hint Potential Linkages between Pharyngeal Microbiota and COVID-19. *Virology.* 2021:1–10. doi:10.1007/s12250-021-00391-x
18. Barrasa H, Rello J, Tejada S, et al. SARS-Cov-2 in Spanish intensive care: early experience with 15-day survival in vitoria. *Anaesth Crit Care Pain Med.* 2020;39(5):553–561. doi:10.1016/j.accpm.2020.04.001
19. Kim D, Quinn J, Pinsky B, Shah NH, Brown I. Rates of co-infection between SARS-CoV-2 and other respiratory pathogens. *JAMA.* 2020;323(20):2085–2086. doi:10.1001/jama.2020.6266
20. Nicastrì E, Petrosillo N, Bartoli TA, et al. National institute for the infectious diseases “L. Spallanzani”, IRCCS. Recommendations for COVID-19 clinical management. *Infect Dis Rep.* 2020;12(1):3–9. doi:10.4081/idr.2020.8543
21. Li T. Diagnosis and clinical management of severe acute respiratory syndrome Coronavirus 2 (SARS-CoV-2) infection: an operational recommendation of Peking Union Medical College Hospital (V2.0). *Emerg Microbes Infect.* 2020;9(1):582–585. doi:10.1080/22221751.2020.1735265
22. Bhatraju PK, Ghassemieh BJ, Nichols M, et al. Covid-19 in critically ill patients in the seattle region - case series. *N Engl J Med.* 2020;382(21):2012–2022. doi:10.1056/NEJMoa2004500
23. Liu W, Tao ZW, Wang L, et al. Analysis of factors associated with disease outcomes in hospitalized patients with 2019 novel coronavirus disease. *Chin Med J.* 2020;133(9):1032–1038. doi:10.1097/CM9.0000000000000775
24. Resolución Ministerial N° 839-2020-MINSA [Internet]. Ministerio de Salud; 2020 [cited February 16, 2021]. Available from: <https://www.gob.pe/institucion/minsa/normas-legales/1264399-839-2020-minsa>. Accessed June 23, 2021.
25. Vásquez-Kunze S, Soto A, Indacochea-Cáceda S, Bisso-Andrade A. Guía rápida para la evaluación, diagnóstico y el manejo del paciente con COVID-19. 2020 [cited February 16, 2021]. Available from: <https://medicinainterna.net.pe/sites/default/files/Guia%20rapida%20COVID%2019%20V%203.0%20%289%20sept%29%20%20final.pdf>. Accessed June 23, 2021.
26. Ministerio de Salud y Protección Social. Lineamientos para el manejo clínico de pacientes con infección por nuevo Coronavirus COVID-19. 2020 [cited February 16, 2021]. Available from: <https://www.minsalud.gov.co/Ministerio/Institucional/Procesos%20y%20procedimientos/PSSS03.pdf>.
27. Bhimraj A, Morgan RL, Shumaker AH, et al. COVID-19 guideline, part 1: treatment and management. 2020 [cited February 16, 2021]. Available from: <https://www.idsociety.org/practice-guideline/covid-19-guideline-treatment-and-management/>. Accessed June 23, 2021.
28. The National Institute for Health and Care Excellence. COVID-19 rapid guideline: antibiotics for pneumonia in adults in hospital [Internet]. NICE; 2020 [cited February 16, 2021]. Available from: <https://www.nice.org.uk/guidance/ng173>. Accessed June 23, 2021.

Infection and Drug Resistance

Dovepress

Publish your work in this journal

Infection and Drug Resistance is an international, peer-reviewed open-access journal that focuses on the optimal treatment of infection (bacterial, fungal and viral) and the development and institution of preventive strategies to minimize the development and spread of resistance. The journal is specifically concerned with the epidemiology of

antibiotic resistance and the mechanisms of resistance development and diffusion in both hospitals and the community. The manuscript management system is completely online and includes a very quick and fair peer-review system, which is all easy to use. Visit <http://www.dovepress.com/testimonials.php> to read real quotes from published authors.

Submit your manuscript here: <https://www.dovepress.com/infection-and-drug-resistance-journal>