

# Diabetes Mellitus as a Risk Factor for Progression from Acute Kidney Injury to Acute Kidney Disease: A Specific Prediction Model

Huanhuan Zhao<sup>1-5,\*</sup>Lulu Liang<sup>1-5,\*</sup>Shaokang Pan<sup>1</sup>Zhenjie Liu<sup>1</sup>Yan Liang<sup>1</sup>Yingjin Qiao<sup>1</sup>Dongwei Liu<sup>1-5</sup>Zhangsuo Liu<sup>1-5</sup>

<sup>1</sup>Department of Nephrology, The First Affiliated Hospital of Zhengzhou University, Zhengzhou, 450052, People's Republic of China; <sup>2</sup>Research Institute of Nephrology, Zhengzhou University, Zhengzhou, 450052, People's Republic of China; <sup>3</sup>Research Center for Kidney Disease, Zhengzhou, 450052, Henan Province, People's Republic of China; <sup>4</sup>Key Laboratory of Precision Diagnosis and Treatment for Chronic Kidney Disease in Henan Province, Zhengzhou, 450052, People's Republic of China; <sup>5</sup>Core Unit of National Clinical Medical Research Center of Kidney Disease, Zhengzhou, 450052, People's Republic of China

\*These authors contributed equally to this work

**Purpose:** Acute kidney injury is very common in hospitalized patients and carries a significant risk of mortality. Although timely intervention may improve patient prognosis, studies on the development of acute kidney disease in patients with acute kidney injury remain scarce. Thus, we constructed a prediction model to identify patients likely to develop acute kidney disease.

**Patients and Methods:** Among 474 patients screened for eligibility, 261 were enrolled and randomly divided into training (185 patients) and independent validation cohorts (76 patients). Least absolute shrinkage and selection operator regression and multivariate logistic regression analyses were used to select features and build a nomogram incorporating the selected predictors: diabetes, anemia, oliguria, and peak creatinine. Calibration, discrimination, and the clinical usefulness of the model were assessed using calibration plots, the C-index, receiver operating characteristic curves, and decision curve analysis.

**Results:** Diabetes was significantly associated with the presence of AKD. Peak creatinine, oliguria, and anemia also contributed to the progression of acute kidney injury. The model displayed good predictive power with a C-index of 0.834 and an AUC of 0.834 (95% confidence interval (CI): 0.773–0.895) in the training cohort and a C-index of 0.851 and an AUC of 0.851 (95% CI: 0.753–0.949) in the validation cohort. The calibration curves also showed that the model had a medium ability to predict acute kidney disease risk. Decision curve analysis showed that the nomogram was clinically useful when interventions were decided at the possibility threshold of 22%.

**Conclusion:** This novel prediction nomogram may allow for convenient prediction of acute kidney disease in patients with acute kidney injury, which may help to improve outcomes.

**Keywords:** diabetes mellitus, acute kidney injury, anemia, oliguria, nomogram

## Introduction

Acute kidney injury (AKI) is a common complication of critical illness, affecting up to 20% of hospitalized patients and almost half of patients in the intensive care unit (ICU).<sup>1,2</sup> AKI can increase in-hospital stay or long-term mortality. For example, among patients with septic shock, the 60-day mortality rate of patients with AKI is three to five times that of those without AKI.<sup>3</sup> Furthermore, survivors of AKI have an increased risk of chronic kidney disease (CKD) and end-stage kidney disease (ESRD), both of which can diminish a patient's quality of life and cause a heavy burden for their families and the health system.<sup>4</sup> At present, AKI and CKD represent a continuum of the disease process but are not discrete entities. Thus, the

Correspondence: Zhangsuo Liu; Dongwei Liu  
Department of Nephrology, The First Affiliated Hospital of Zhengzhou University, No. 1, Jianshe East Road, Zhengzhou, 450052, Henan Province, People's Republic of China  
Tel +86-0371-66295921  
Email Lzs58055@163.com; dongweiliu01@163.com

term acute kidney disease (AKD) was proposed to unify the more established concepts of AKI and CKD.<sup>5</sup> In 2017, the Acute Disease Quality Initiative (ADQI) workgroup proposed a new definition of AKD in their expert consensus document. AKD was defined as AKI stage one or higher persisting  $\geq 7$  days and  $< 90$  days.<sup>6</sup> Recently, a prospective, multicenter cohort study reported that early recovery of kidney function after AKI was associated with better long-term clinical outcomes.<sup>7</sup> Additionally, some experts have suggested that initiating critical interventions during the window of this AKD period may effectively improve the prognosis of patients. However, research regarding AKD is scarce. To date, only one study has attempted to use kidney biopsy samples to characterize AKD.<sup>8</sup> The ADQI 16 workgroup consensus noted that, to ensure more meaningful application of the concept of AKD in clinical practice, further studies concerning the epidemiology of AKD—including predictors, disease course, and results related to AKI are warranted.<sup>6</sup>

Advancements in computer science have enabled the development of predictive models for various diseases based on electronic medical records surveillance.<sup>9,10</sup> Therefore, in this novel, retrospective study, we aimed to identify risk factors for AKD. We also constructed a clinical prediction model to identify patients likely to have AKD based on clinical risk scores.

## Materials and Methods

### Patient Selection

We screened all patients admitted to the First Affiliated Hospital of Zhengzhou University from January 2018 to December 2018. The requirement for informed consent was waived due to the retrospective nature of the study. A total of 474 patients were clinically diagnosed with AKI, acute renal failure, or acute renal insufficiency. Patients were included in this study if they met the Kidney Disease: Improving Global Outcomes (KDIGO) AKI diagnostic criteria, if it was their first hospital admission due to AKI, and if we were able to obtain their serum creatinine value  $\geq 7$  days after the diagnosis of AKI from the medical record or their serum creatinine value dropped to less than 1.5 times the normal value within 7 days. Patients who were younger than 18 years old, those with a history of kidney disease or nephrectomy, and those whose medical records were incomplete were excluded (Figure 1). A total of 261 patients who met the inclusion and exclusion criteria were included in this study and were

randomly divided into the training ( $n=185$ ) and validation ( $n=76$ ) groups.

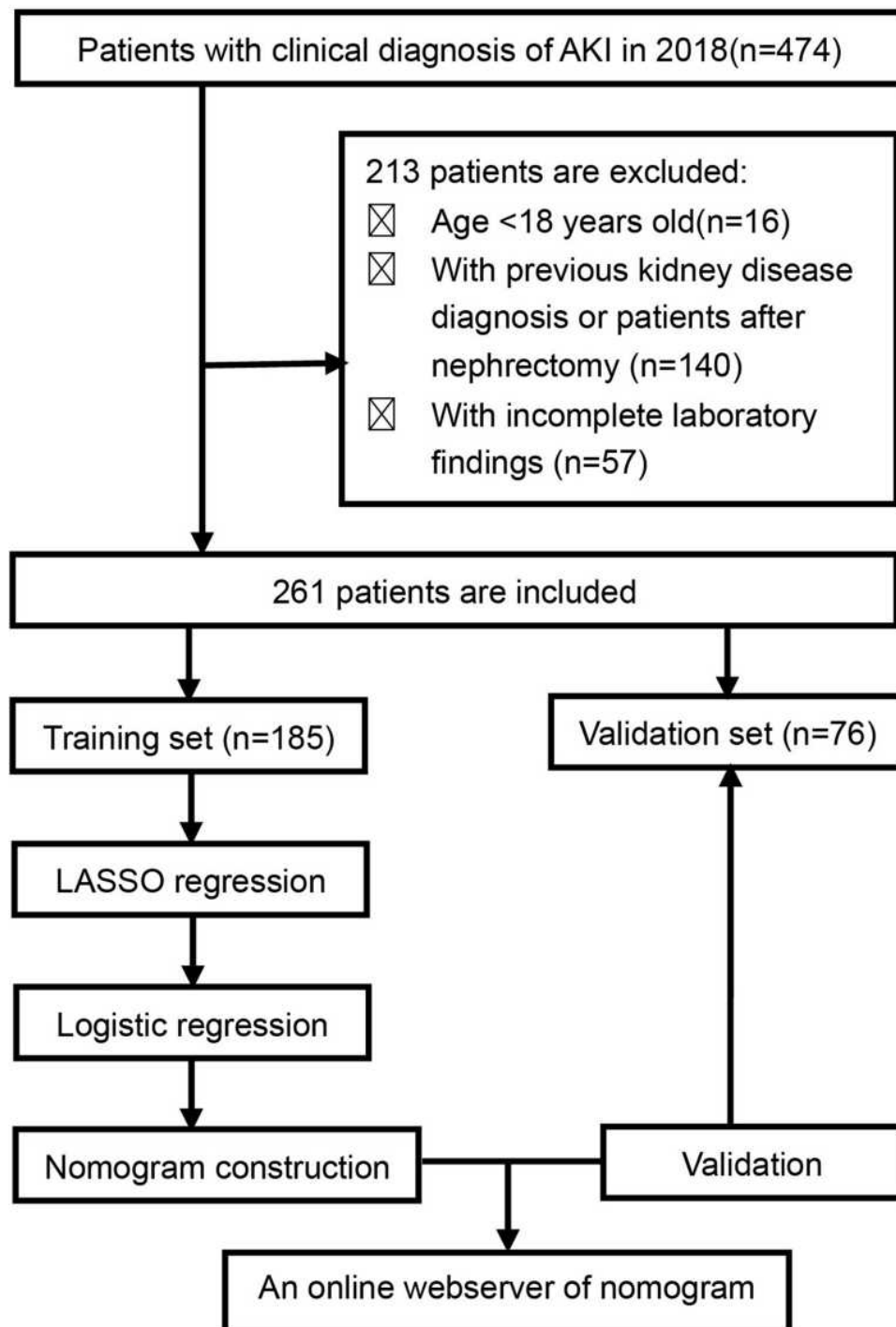
### Data Acquisition

We retrospectively collected patient data, including demographic characteristics (age, sex), vascular risk factors (hypertension, diabetes mellitus), laboratory parameters on the day of admission (white blood cell (WBC) count, hemoglobin (Hb), platelet (PLT) count, blood urea nitrogen (BUN), all serum creatinine values (Scr), uric acid (UA), alanine aminotransferase (ALT), total protein (TP), blood Albumin (ALB), total cholesterol (T-CHO), triglyceride (TG), low-density lipoprotein (LDL), high-density lipoprotein (HDL), 24-h urine volume, and presence of proteinuria), admission department, and receipt of continuous renal replacement therapy (CRRT). Hypertension was defined based on blood pressure values higher than the normal value (systolic blood pressure  $\geq 140$  mmHg/or diastolic blood pressure  $\geq 90$  mmHg) on three different days. Diabetes was defined by any of the following conditions: 1) blood glucose  $\geq 11.1$  mmol/L (200 mg/dl) at any time of the day; 2) fasting blood glucose level  $\geq 7.0$  mmol/L (126 mg/dl); or 3) oral glucose tolerance test 2-hour blood glucose level  $\geq 11.1$  mmol/L (200 mg/dl). Proteinuria was defined when the 24-hour urine protein level exceeded 0.15 g, the urine protein/creatinine was  $> 0.2$  g/g, or the urine protein qualitative test was positive. Oliguria was defined as a 24-hour urine output less than 400 mL. Anemia was defined as Hb  $< 120$  g/L for men and Hb  $< 110$  g/L for women. Uric acid values over 420 micromoles per liter for men or over 360 micromoles per liter for women were defined as high uric acid. We used the discrete BUN (quartile) and peak values of creatinine (quintile) with equal frequency to ensure clinical relevance.

### Definition of AKI and AKD

#### Definition of AKI

AKI was defined as any of the following (not graded): increase in serum creatinine (SCr) by  $\geq 0.3$  mg/dL ( $\geq 26.5$   $\mu\text{mol/L}$ ) within 48 hours or increase in SCr to  $\geq 1.5$  times baseline, which is known or presumed to have occurred within the prior 7 days; or urine volume  $< 0.5$  mL/kg/h for 6 hours. AKI Stage 1 was defined as an SCr increase of more than  $26.5 \mu\text{mol/L}$  within 48 h or increase of  $\geq 1.5$  of the threshold less than 2.0 times within 7 days. AKI Stage 2 was defined as an SCr increase of 2.0 to 2.9 times the value. AKI Stage 3 was defined as an SCr increase up to



**Figure 1** Patient screening and study design flow chart.

**Abbreviations:** AKI, acute kidney injury; KDIGO, Kidney disease: Improving Global Outcomes; LASSO, least absolute shrinkage and selection operator.

the refractive index of more than 3.0 times, an Scr >353.6  $\mu\text{mol/L}$ , or the start of CRRT.<sup>5</sup>

#### Definition of AKD

AKD was defined as the presence of AKI Stage 1 or higher persisting  $\geq 7$  days but <90 days after the onset of

AKI, in accordance with the diagnostic criteria of the ADQI.<sup>6</sup>

#### Statistics Software and Data Analysis

Statistical analysis was performed using R software (version 3.6.3; <https://www.R-project.org>). Feature selection,

nomogram establishment, calibration curve generation, AUC measurements, and decision curve analysis were performed using the “tableone,” “glmnet,” “Hmisc,” “regplot,” “pROC,” “rmda,” and “rms” packages in R software. To develop a dynamic nomogram online application (APP) for predicting the occurrence of AKD, we used the “rsconnect” and “DynNom” packages in R software.

Continuous variables are expressed as the median (interquartile range) or mean  $\pm$  standard deviation (SD), while categorical variables are expressed as absolute frequencies, *n* (%). The continuous and categorical data were compared between the training and validation groups using the chi-square test, independent Samples *t*-test, or Mann–Whitney *U*-test. A *P* value of 0.05 (two-tailed) was considered significant.

## Construction of the Nomogram Model

Least absolute shrinkage and selection operator (LASSO) regression was used to select the optimal predictive features while fitting a generalized linear model in this study.<sup>11</sup> This method can select features for better performance parameters and control the complexity of the model through a series of parameters to avoid overfitting. Features with nonzero coefficients in the LASSO regression model were selected.<sup>12</sup> To predict the probability of AKD, a multivariable logistic regression (MLR) analysis was performed by incorporating the features selected in the LASSO regression model. *P* values in the multivariable analysis were based on the Wald test, and a *P* value  $\leq 0.05$  was considered significant. A forest plot was drawn to describe the results of the MLR, and it included the *P*-value, odds ratio (OR), and 95% confidence interval (CI) of visually selected features. Statistically significant predictors were applied to develop a model of AKD risk prediction for patients with AKI.<sup>13</sup> This model weights the predictors according to the regression coefficients of all significant predictors and gives a score for each value level of each predictor. Then, we mapped the values of each significant predictor to points ranging from 0 to 100. The total points obtained for each model corresponded to the probability of AKD.

## Validation of the Nomogram Model

The calibration of the models was measured using calibration curves.<sup>14</sup> The receiver operating characteristic curve (ROC) and the average optimism of the area under the curve (AUC) were measured to quantify the discrimination performance and the predictive ability of the AKD

nomogram. The AKD risk nomogram was validated both internally and externally to ascertain its predictive power.

In the internal validation, we used a bootstrap resampling method for obtaining relatively unbiased estimates (1000 repetitions). The model was refitted, and accuracy and bias were estimated to calculate a relatively corrected C-index for each group of 1000 bootstrap samples.<sup>15</sup> In the external validation, we measured the predictive accuracy of the nomogram by measuring the AUC of the validation cohort.

We also performed decision curve analysis (DCA) to evaluate the clinical usefulness of the predictive model by analyzing the clinical net benefit of the prediction model in both the training and validation cohorts.<sup>16</sup> The selected probability thresholds are where the expected benefit of intervention is equal to the expected benefit of avoiding intervention. When a patient's probability fell within the probability thresholds, the model was considered to provide more benefit.<sup>17</sup>

## Results

### Patient Characteristics

Of the 474 patients with AKI who visited our clinic from January 2018 to December 2018, 261 met the inclusion and exclusion criteria. These patients were randomly divided into the training group (*n*=185) and the validation group (*n*=76). The epidemiological and clinical characteristics of the training and validation cohorts are summarized in Table 1. We observed no significant differences in patient characteristics between the two cohorts. In the training cohort, 127 patients developed AKD, resulting in an AKD incidence of 68.6%. Patients with oliguria (*P*<0.05) and anemia (*P*<0.05) were more likely to develop AKD than those without oliguria and anemia. Patients with AKD tended to have significantly higher peak creatinine (*P*<0.0001), higher BUN (*P*=0.001), lower PLT (*P*<0.05), and lower ALB (*P*<0.05) levels than those without AKD. All patient data for the training cohort, including demographic characteristics, clinical findings, and laboratory test results, are provided in Table 2.

### Feature Selection

Among the demographic characteristics, clinical findings, and laboratory test results, 18 features including sex, age, hypertension, diabetes, oliguria, proteinuria, anemia, BUN, peak creatinine, WBC, PLT, UA, TP, ALB, TG,

**Table 1** Details of Patients' Characteristics in the Training Cohort (N=185) and Validation Cohort (N=76) of the AKD Prediction Model

Characteristics <sup>a</sup>	Overall (n=261)	Training Cohort (n=185)	Validation Cohort (n=76)	p value
Sex				0.709
Male	162 (62.1)	113 (61.1)	49 (64.5)	
Female	99 (37.9)	72 (38.9)	27 (35.5)	
Age, years	51.00 [39.00, 65.00]	50.00 [39.00, 65.00]	55.00 [39.00, 65.00]	0.499
AKI stage 1	17 (6.5)	12 (6.5)	5 (6.7)	0.278
AKI stage 2	47 (18.1)	29 (15.7)	18 (24.0)	
AKI stage 3	196 (75.4)	144 (77.8)	52 (69.3)	
Admission to Nephrology	56 (21.5)	40 (21.6)	16 (21.1)	1
Admission to ICU	189 (72.4)	137 (74.1)	52 (68.4)	0.44
Hypertension	84 (32.2)	60 (32.4)	24 (31.6)	1
Diabetes	29 (11.1)	16 (8.6)	13 (17.1)	0.079
Oliguria	26 (10.0)	18 (9.7)	8 (10.5)	1
Proteinuria	101 (38.8)	69 (37.5)	32 (42.1)	0.58
Baseline creatinine	88.00 [71.00, 97.00]	87.00 [71.00, 97.00]	89.00 [71.00, 97.00]	0.373
Peak-creatinine, $\mu\text{mol/L}$	452 [241.9, 742.0]	456 [242.6, 752.8]	430.5 [430.1, 707]	0.4
BUN, mmol/L	15.70 [10.60, 24.60]	15.70 [10.72, 25.80]	15.57 [10.06, 22.49]	0.532
UA, $\mu\text{mol/L}$	474.00 [357.00, 640.00]	476.00 [354.00, 654.00]	470.50 [386.50, 567.75]	0.522
Anemia	118 (45.4)	82 (44.3)	36 (48.0)	0.688
PLT, $\times 10^9/\text{L}$	202.00 [133.00, 265.00]	200.00 [132.00, 267.00]	204.50 [141.50, 260.50]	0.918
WBC, $\times 10^9/\text{L}$	9.10 [6.76, 12.50]	9.20 [6.70, 12.65]	8.78 [6.79, 12.12]	0.464
TP, g/L	64.60 [58.40, 71.70]	64.90 [58.40, 71.50]	63.95 [58.63, 71.98]	0.699
ALB, g/L	36.10 (8.36)	36.35 (8.84)	35.47 (7.08)	0.438
TC, mmol/L	3.62 [3.06, 4.58]	3.69 [3.07, 4.63]	3.54 [3.04, 4.28]	0.398
TG, mmol/L	1.56 [1.09, 2.39]	1.61 [1.05, 2.48]	1.46 [1.20, 2.19]	0.789
HDL, mmol/L	0.88 [0.68, 1.10]	0.89 [0.69, 1.09]	0.83 [0.66, 1.14]	0.585
LDL, mmol/L	2.06 [1.55, 2.88]	2.09 [1.55, 2.88]	2.05 [1.57, 2.82]	0.761
CRRT treatment	88 (33.8)	60 (32.4)	28 (37.3)	0.541

**Notes:** <sup>a</sup>Continuous variables are expressed as median (interquartile range) or mean  $\pm$  standard deviation, SD, categorical variables as absolute frequencies, n (%). p values comparing Derivation group and Validation group are from  $\chi^2$  test, t-test, or Mann-Whitney U-test.

**Abbreviations:** BUN, blood urea nitrogen; UA, uric acid; PLT, platelet count; WBC, white blood cell; TP, total protein; ALB, albumin; TC, total cholesterol; TG, triglycerides; HDL, high-density lipoprotein; LDL, low-density lipoprotein; CRRT, treatment Continuous Renal Replacement Therapy treatment.

TC, LDL, and HDL were reduced to six potential predictors based on 185 patients in the cohort (3:1 ratio; shown in Figure 2A and B). Their coefficients in the LASSO regression were nonzero. These six potential predictors included hypertension, diabetes, peak-creatinine, oliguria, anemia, and PLT. These factors were further subjected to MLR analysis. MLR analyses revealed that diabetes, peak creatinine, oliguria, and anemia were significantly associated with the presence of AKD (Figure 3).

## Nomogram Establishment and Validation

Based on the LASSO and MLR analyses, we established a model incorporating the significant risk factors to predict the probability of AKD and presented this model as a nomogram (Figure 4A). The equation describing the probability of AKD was as follows:  $P = 1/(1 + \exp(2X))$ . In this equation,  $X = -2.1743 + 1.3120 \times V1 +$

$0.8204 \times V2 + 2.1267 \times V3 + 0.8810 \times V4$ . V1 represents diabetes (0 if no diabetes and 1 if diabetes), V2 represents anemia (0 if no anemia and 1 if anemia), V3 represents oliguria (0 if no oliguria and 1 if oliguria), and V4 represents peak creatinine (1 if  $<223 \mu\text{mol/L}$ , 2 if  $223\text{--}347.8 \mu\text{mol/L}$ , 3 if  $347.8\text{--}536 \mu\text{mol/L}$ , 4 if  $536\text{--}810 \mu\text{mol/L}$ , 5 if  $\geq 810 \mu\text{mol/L}$ ). The calibration curve of the AKD risk nomogram in patients with AKI demonstrated good agreement (Figure 4B). The AUC of the ROC curve of the AKD risk nomogram in the training group (Figure 5A) was 0.834 (95% CI: 0.773–0.895), which denotes good performance.

The AKD risk nomogram was validated both internally and externally. In the internal validation, the C-index for the nomogram was 0.807. In the external validation, we confirmed the nomogram in the validation cohort of 76 patients. The AUC of the ROC curve in the validation set

**Table 2** Differences Between Demographic Characteristics of Non-AKD and AKD Groups in the Training Cohort

Demographic Characteristics	Overall (n=185)	Non-AKD (n=58)	AKD (n=127)	p value
AKI staging				<0.001
Stage 1	12 (6.5)	10 (17.2)	2 (1.6)	
Stage 2	29 (15.7)	17 (29.3)	12 (9.4)	
Stage 3	144 (77.8)	31 (53.4)	113 (89)	
Admission to ICU				0.100
NO	48(25.9)	10(17.2)	38(29.9)	
YES	137(74.1)	48(82.8)	89(70.1)	
Admission to Nephrology				0.432
NO	145(78.4)	48(82.8)	89(70.1)	
YES	40(21.6)	10(17.2)	38(29.9)	
Sex				0.318
Female	72 (38.9)	19 (32.8)	53 (41.7)	
Male	113 (61.1)	39 (67.2)	74 (58.3)	
Age (years)				0.223
<35	34 (18.4)	16 (27.6)	18 (14.2)	
35–45	32 (17.3)	7 (12.1)	25 (19.7)	
45–55	45 (24.3)	14 (24.1)	31 (24.4)	
55–65	29 (15.7)	9 (15.5)	20 (15.7)	
≥65	45 (24.3)	12 (20.7)	33 (26.0)	
Hypertension				0.434
No	125 (67.6)	42 (72.4)	83 (65.4)	
Yes	60 (32.4)	16 (27.6)	44 (34.6)	
Diabetes				0.393
No	169 (91.4)	55 (94.8)	114 (89.8)	
Yes	16 (8.6)	3 (5.2)	13 (10.2)	
Oliguria				0.027
No	167 (90.3)	57 (98.3)	110 (86.6)	
Yes	18 (9.7)	1 (1.7)	17 (13.4)	
Proteinuria				0.287
No	115 (62.5)	40 (69.0)	75 (59.5)	
Yes	69 (37.5)	18 (31.0)	51 (40.5)	
Peak creatinine, μmol/L				<0.001
<223	36 (19.5)	25 (43.1)	11 (8.7)	
223–347.8	35 (18.9)	16 (27.6)	19 (15.0)	
347.8–536	39 (21.1)	9 (15.5)	30 (23.6)	
536–810	37 (20.0)	5 (8.6)	32 (25.2)	
≥810	38 (20.5)	3 (5.2)	35 (27.6)	
BUN, mmol/L				0.001
<10.6	46 (24.9)	25 (43.1)	21 (16.5)	
10.6–15.7	47 (25.4)	12 (20.7)	35 (27.6)	
15.7–24.6	40 (21.6)	11 (19.0)	29 (22.8)	
≥24.6	52 (28.1)	10 (17.2)	42 (33.1)	
UA				0.304
Normal	62 (33.5)	23 (39.7)	39 (30.7)	
High	123 (66.5)	35 (60.3)	88 (69.3)	

(Continued)

Table 2 (Continued).

Demographic Characteristics	Overall (n=185)	Non-AKD (n=58)	AKD (n=127)	p value
Anemia				0.003
No	103 (55.7)	42 (72.4)	61 (48.0)	
Yes	82 (44.3)	16 (27.6)	66 (52.0)	
PLT, ×10 <sup>9</sup> /L				0.035
>100	151 (81.6)	53 (91.4)	98 (77.2)	
≤100	34 (18.4)	5 (8.6)	29 (22.8)	
WBC, ×10 <sup>9</sup> /L				0.531
≤10	107 (57.8)	36 (62.1)	71 (55.9)	
>10	78 (42.2)	22 (37.9)	56 (44.1)	
TP, g/L				0.565
≥60	127 (68.6)	42 (72.4)	85 (66.9)	
<60	58 (31.4)	16 (27.6)	42 (33.1)	
ALB, g/L				0.032
≥40	67 (36.2)	28 (48.3)	39 (30.7)	
<40	118 (63.8)	30 (51.7)	88 (69.3)	
TC, mmol/L				0.645
<5.18	161 (87.0)	49 (84.5)	112 (88.2)	
≥5.18	24 (13.0)	9 (15.5)	15 (11.8)	
TG, mmol/L				0.962
<1.7	100 (54.1)	32 (55.2)	68 (53.5)	
≥1.7	85 (45.9)	26 (44.8)	59 (46.5)	
HDL, mmol/L				0.496
>1.04	59 (31.9)	21 (36.2)	38 (29.9)	
≤1.04	126 (68.1)	37 (63.8)	89 (70.1)	
LDL, mmol/L				0.874
<3.37	159 (85.9)	49 (84.5)	110 (86.6)	
≥3.37	26 (14.1)	9 (15.5)	17 (13.4)	
CRRT treatment				<0.001
NO	125(67.6)	51(87.9)	74(58.3)	
YES	60(32.4)	7(12.1)	53(41.7)	

**Notes:** Peak creatinine is defined as the highest value of serum creatinine during AKI. Data are expressed as absolute frequencies, n (%). p values comparing Non-AKD group and AKD group are from  $\chi^2$  test.

**Abbreviations:** BUN, blood urea nitrogen; UA, uric acid; PLT, platelet count; WBC, white blood cell; TP, total protein; ALB, albumin; TC, total cholesterol; TG, triglycerides; HDL, high-density lipoprotein; LDL, low-density lipoprotein.

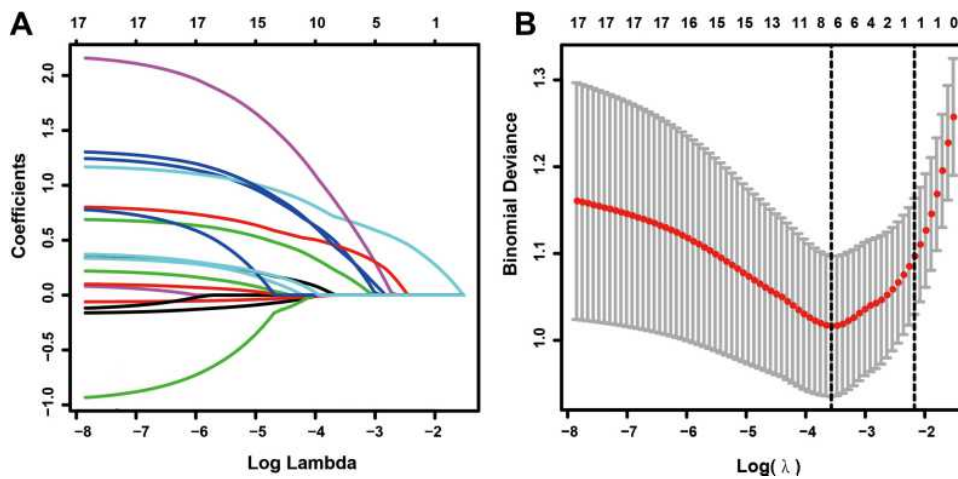
was 0.851 (95% CI: 0.753–0.949), which suggested good discrimination (Figure 5B). The AKD risk nomogram exhibited apparently good prediction capability.

## Clinical Use

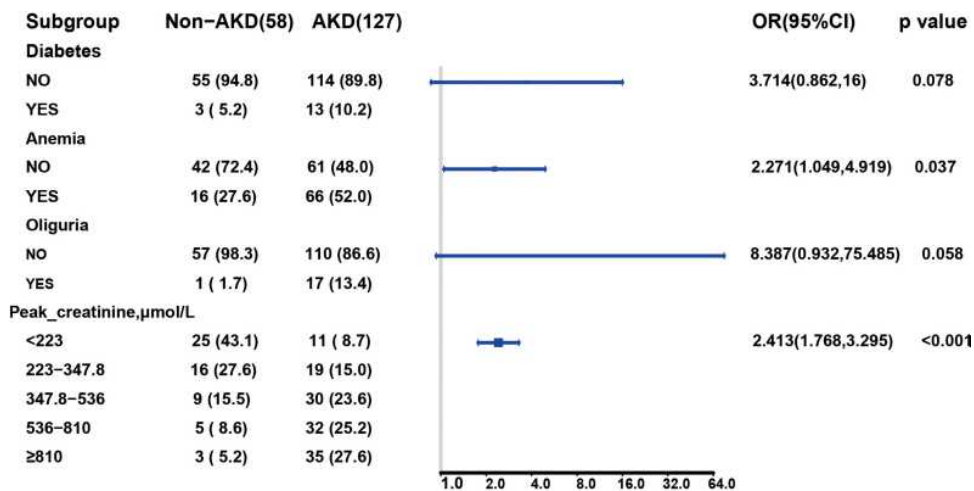
The decision curve analysis for the AKD risk nomogram is presented in Figure 5C–D. In the training group, threshold probabilities >22% and <93% received more benefit from using this nomogram to predict AKD risk (Figure 5C). The clinical net benefit of prediction models was confirmed

using the validation cohort. The results for the validation cohort showed that using the nomogram to predict the risk of AKD was more beneficial between a threshold probability of 18% and 89% (Figure 5D).

We also developed a dynamic nomogram online APP to assist researchers and clinicians in predicting AKD probability in patients with AKI, under the following URL: <https://yohou.shinyapps.io/DynNomapp/>. In this tool, one can pull sliders for covariates (diabetes (0 if no diabetes and 1 if diabetes), anemia (0 if no anemia and 1 if anemia), oliguria



**Figure 2** Feature selection using the LASSO regression analysis. (A) LASSO coefficient profiles of the non-zero variables of AKI patients. A coefficient profile plot was produced against the log (lambda) sequence. (B) Seven features with nonzero coefficients were selected by optimal lambda. By verifying the optimal parameter (lambda) in the LASSO model, the partial likelihood deviance (binomial deviance) curve was plotted versus log (lambda).



**Figure 3** Multivariate regression analysis in predictive factors of AKD in the training cohort. OR and 95% CI are presented to show the risk of predictive factors.

(0 if no oliguria and 1 if oliguria), peak creatinine (1 if <223 μmol/L, 2 if 223–347.8 μmol/L, 3 if 347.8–536 μmol/L, 4 if 536–810 μmol/L, 5 if ≥810μmol/L)) and press the “predict” button to generate the probability of AKD occurrence and the corresponding 95% confidence intervals, which are plotted in the “Graphical Summary” tab.<sup>18</sup> Clinicians can easily determine AKD probability by inputting the clinical features of patients and then reading the output graphs and tables generated by the web server.

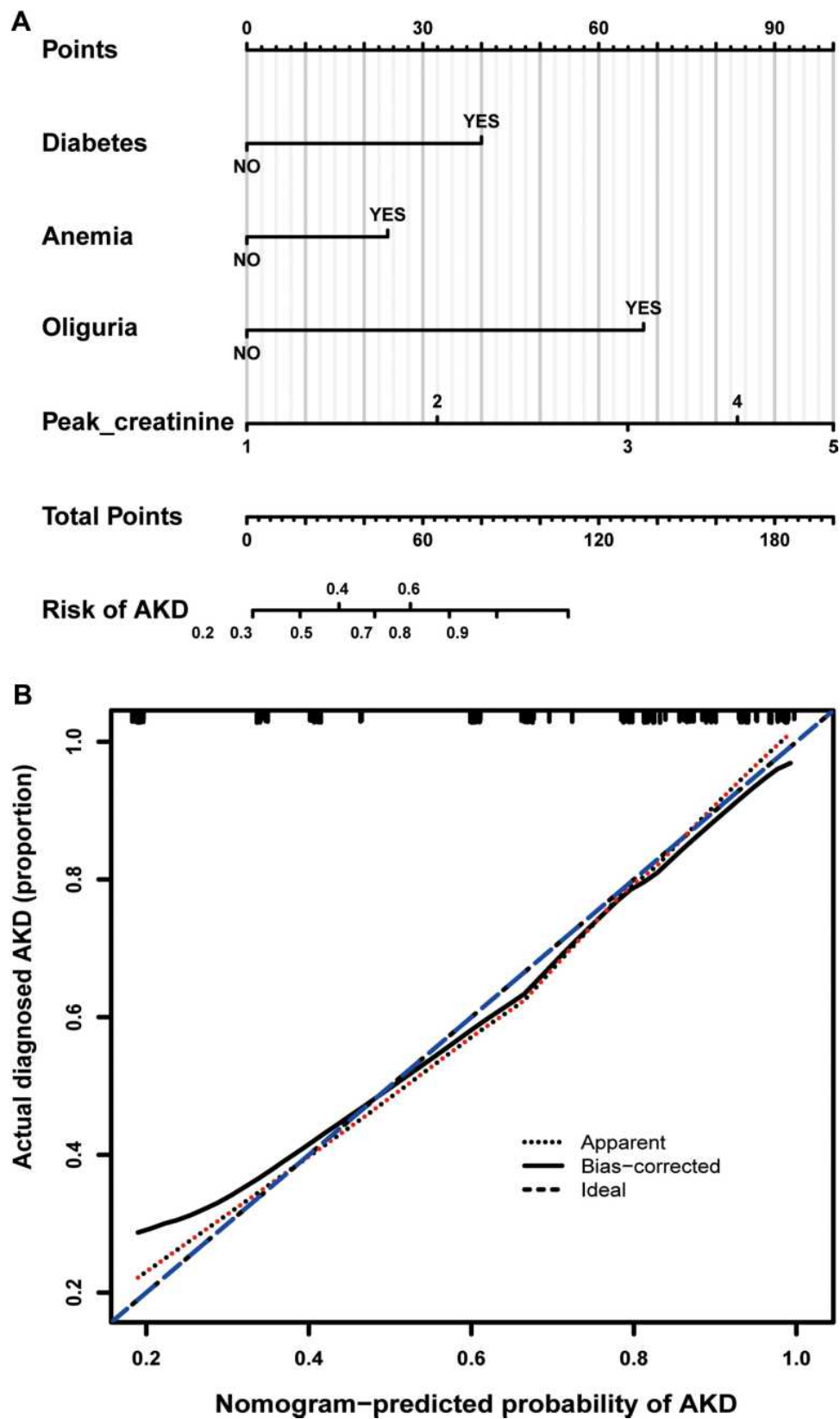
## Discussion

Currently, there are no practical tools to help clinicians identify patients who are likely to develop AKD, which makes the clinical examination of AKD difficult. The

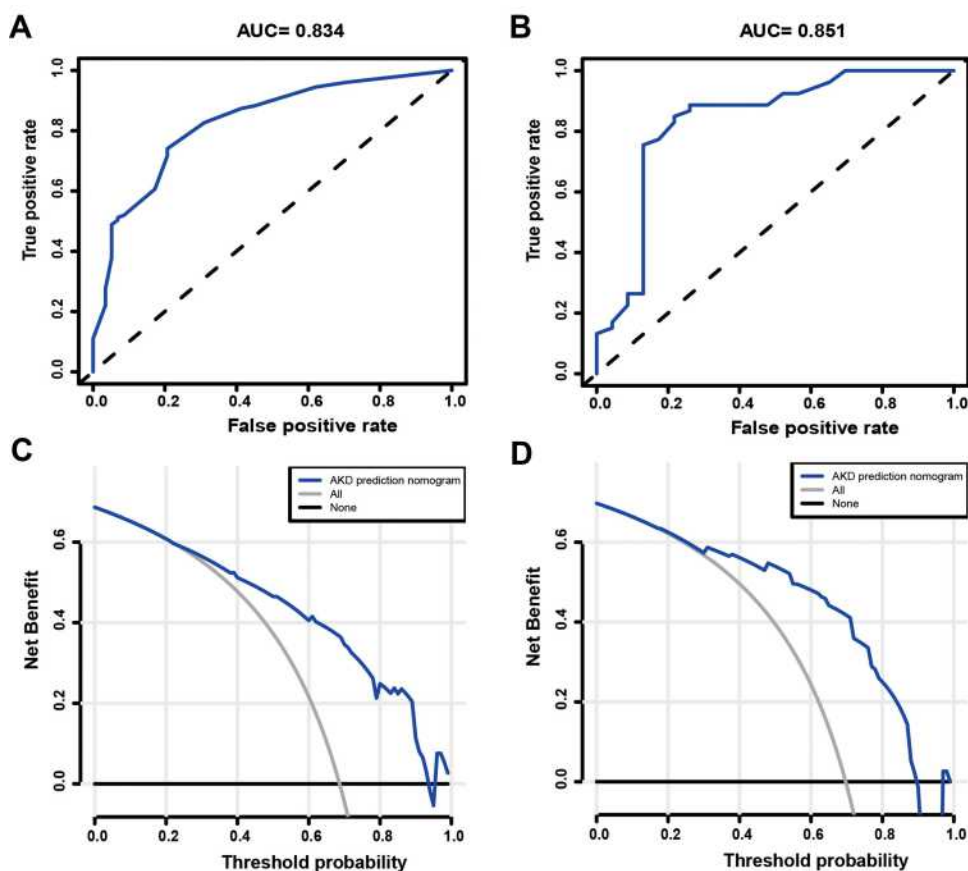
easy-to-understand AKD risk nomogram we developed using four risk factors (diabetes, anemia, oliguria, and peak creatinine) is the first to predict the individual probability of AKD for patients with AKI. We also developed a dynamic nomogram with a user-friendly digital interface, which can be used to facilitate clinical decisions. Moreover, the discrimination and robustness of our AKD risk nomogram were demonstrated by internal and external validation in an independent patient cohort.

## Prevalence of AKD Among Patients with AKI

In our study, the prevalence rates of AKD in patients with AKI in the training and validation cohorts were 68.6% and



**Figure 4** Nomogram for predicting AKD risk and a calibration curve of the nomogram. **(A)** Nomogram to estimate the risk of AKD presence in AKI patients. The nomogram to predict AKD was created based on four risk factors (Diabetes, Anemia, Oliguria, and Higher Peak-creatinine level). The points of each variable are added to correspond to the total points line. **(B)** Calibration curve of the AKD predictive nomogram. The x-axis represents the predicted AKD risk. The y-axis represents the actual diagnosed AKD. The apparent and the bias-corrected values are close to each other, indicating that the nomogram has a good predictive performance.



**Figure 5** Evaluation of the prediction effect of the nomogram in the derivation (**A** and **C**) and validation (**B** and **D**) cohorts. (**A** and **B**) The pooled AUC of the ROC curve. The x-axis is the false positive rate of the risk prediction. The blue line represents the performance of the nomogram. The y-axis is the true positive rate of the risk prediction. (**C** and **D**) Decision curve analysis for the nomogram for predicting AKD risk in the AKI cohort. The x-axis is the probability. The y-axis measures the net benefit. The blue solid line is from the prediction model. The gray line represents the assumption that all AKI patients will develop into patients with AKD. The black line represents the assumption that no patients will develop into patients with AKD.

69.7%, respectively. In other words, AKI persisted in 68.6% or 69.7% of patients  $\geq 7$  days after the onset of AKI and for a duration  $< 90$  days. However, AKD cannot simply be conceptualized as a stage prior to CKD but occurring after AKI. We must be aware that many patients with evolving kidney disease may not meet the strict standards of AKI (or CKD), such as patients with uncertain or subacute kidney disease.

## Main Risk Factors for AKD in Patients with AKI

### Diabetes

Our study highlights diabetes as a risk factor for the development of AKD in patients with AKI, which is consistent with many other studies.<sup>19–21</sup> See et al<sup>20</sup> reported that diabetes was associated with poor long-term outcomes of AKI in a meta-analysis of cohort studies. In a Canadian population-based cohort study (n=190,714), Pannu et al

found that participants with complicated diabetes were less likely to recover renal function.<sup>7</sup> Furthermore, diabetes is a major cause of end-stage renal disease (ESRD). In summary, patients with AKI who have diabetes often exhibit poor prognosis, highlighting the importance of achieving better glycemic control in this population.

### Anemia

Another factor influencing the probability of AKD in patients with AKI is anemia. A previous clinical trial reported that the presence of anemia is strongly associated with an increased risk of developing contrast-induced AKI (adjusted OR=5.3, 95% CI=3.8–7.3,  $P < 0.001$ ).<sup>22</sup> In a retrospective study of 920 patients undergoing cardiopulmonary bypass, lowering the hemoglobin concentration by 1 g/dL increased the risk of AKI by 16% (95% CI=1.05–1.31,  $P = 0.018$ ).<sup>23</sup> Despite the large number of articles that have reported that anemia is a key risk factor for AKI, few studies have investigated the association

between anemia and transition from AKI to AKD. Researchers have proposed that hypoxia contributes to the progression of AKI and its transition to CKD/ESRD.<sup>24,25</sup> Anemia can cause differential degrees of tissue hypoxia in the kidney. In theory, correction of anemia should ameliorate hypoxia and therefore decrease the probability of AKD in patients with AKI.<sup>22</sup>

### Oliguria

Oliguria is significantly associated with the occurrence of AKD and is an important index in our nomogram. Although uncommon, its clinical appearance often indicates a more severe AKI stage and poor prognosis. Cheng et al reported that oliguria was an independent risk factor of 90-day or 1-year adverse prognosis ( $P < 0.05$ ) in hospitalized patients with post-contrast acute kidney injury.<sup>26</sup> Similarly, a nationwide survey of patients with AKI revealed that oliguria occurrence at the time of AKI diagnosis was an independently significant prognostic indicator of in-hospital mortality.<sup>27</sup> Transient oliguria may have a relatively benign nature; however, it is still a symptom of which clinicians must remain aware. Earlier intervention in patients with AKI who exhibit oliguria may prevent the development of AKD.

### Peak Creatinine

Serum creatinine is the most common diagnostic marker of AKI.<sup>28</sup> Increased creatinine may be caused by excessive production or decreased renal excretion, both of which are associated with the progression of AKI. In addition, James et al reported that the mortality risk generally rose with increasing peak creatinine.<sup>29</sup>

### Limitations

First, the main limitation of our study is its retrospective nature. We were unable to fully exclude all potential biases, even though we employed stringent selection criteria. Second, we screened patients with AKI based on the clinical diagnosis from our medical record system. It is possible that some cases of AKI were not recognized by the electronic medical record system. We also excluded some patients with missing information, including several patients who died before developing AKD, which may have led to bias in our results. Third, the external validation cohort used in our study was not established using information from other hospitals. This was a single-center research study, and the findings should be corroborated by multicenter prospective studies with large sample sizes.

Despite these limitations, our results indicate that our nomogram predicting AKD probability may be an effective tool for improving our understanding of the basic process of AKD and improving outcomes in affected patients.

### Conclusion

In this study, we developed and validated a model with good accuracy in predicting AKD risk in patients with AKI. Our findings also highlight the importance of diabetes mellitus as a risk factor for the progression to AKI. This nomogram can help clinicians evaluate the risk of AKD in patients with AKI and may provide evidence for incorporating assessments of AKD risk into clinical practice. Further studies are required to determine whether individual interventions based on this nomogram will reduce AKD risk and improve prognosis among patients with AKI.

### Abbreviations

AUC, area under the curve; AKI, acute kidney injury; ICU, intensive care unit; CKD, chronic kidney disease; ESRD, end-stage kidney disease; AKD, acute kidney disease; ADQE, Acute Disease Quality Initiative; WBC, white blood cells; Hb, hemoglobin; PLT, platelets; BUN, blood urea nitrogen; Scr, serum creatinine; UA, uric acid; ALT, alanine aminotransferase; TP, total protein; ALB, blood Albumin; T-CHO, total cholesterol; TG, triglyceride; LDL, low-density lipoprotein; HDL, high-density lipoprotein; CRRT, continuous renal replacement therapy; LASSO, least absolute shrinkage and selection operator; MLR, multivariate logistic regression; OR, odds ratio; CI, confidence interval; DCA, decision curve analysis.

### Data Sharing Statement

The datasets used or analyzed during the current study are available from the corresponding author: Zhangsuo Liu on reasonable request.

### Ethical Approval and Consent to Participate

The research approval was obtained from the First Affiliated Hospital of Zhengzhou University's Ethics Committee (approval no. 2019-KY-291). Patient consent to review their medical records was waived by the Ethics Committee and due to the retrospective nature of our study. The research was carried out in accordance with the Declaration of Helsinki (as revised in 2013). And we

ensure the dignity of patients by making all patients' information anonymous and confidential.

## Acknowledgments

The authors are accountable for all aspects of the work in ensuring that questions related to the accuracy or integrity of any part of the work are appropriately investigated and resolved. Huanhuan Zhao and Lulu Liang are co-first authors in this study. Dongwei Liu and Zhangsuo Liu are co-correspondence authors for this study.

## Author Contributions

All authors made substantial contributions to conception and design, acquisition of data, or analysis and interpretation of data; took part in drafting the article or revising it critically for important intellectual content; agreed to submit to the current journal; gave final approval of the version to be published; and agree to be accountable for all aspects of the work.

## Funding

This work was supported by grants from National Science and Technology Major Project of China (Grant No. 2020ZX09201-009) and the National Key Research and Development Program (No.2016YFC1305404). There are no conflicts of interest to declare.

## Disclosure

The authors have no conflicts of interest to declare.

## References

- Ronco C, Bellomo R, Kellum JA. Acute kidney injury. *Lancet*. 2019;394(10212):1949–1964. doi:10.1016/s0140-6736(19)32563-2
- Hoste EA, Bagshaw SM, Bellomo R, et al. Epidemiology of acute kidney injury in critically ill patients: the multinational AKI-EPI study. *Intensive Care Med*. 2015;41(8):1411–1423. doi:10.1007/s00134-015-3934-7
- Kellum JA, Chawla LS, Keener C, et al. The effects of alternative resuscitation strategies on acute kidney injury in patients with septic shock. *Am J Respir Crit Care Med*. 2016;193(3):281–287. doi:10.1164/rccm.201505-0995OC
- Chawla LS, Eggers PW, Star RA, Kimmel PL. Acute kidney injury and chronic kidney disease as interconnected syndromes. *N Engl J Med*. 2014;371(1):58–66. doi:10.1056/NEJMra1214243
- Palevsky PM, Liu KD, Brophy PD, et al. KDOQI US commentary on the 2012 KDIGO clinical practice guideline for acute kidney injury. *Am J Kidney Dis*. 2013;61(5):649–672. doi:10.1053/j.ajkd.2013.02.349
- Chawla LS, Bellomo R, Bihorac A, et al. Acute kidney disease and renal recovery: consensus report of the acute disease quality initiative (ADQI) 16 workgroup. *Nat Rev Nephrol*. 2017;13(4):241–257. doi:10.1038/nrneph.2017.2
- Bhatraju PK, Zelnick LR, Chinchilli VM, et al. Association between early recovery of kidney function after acute kidney injury and long-term clinical outcomes. *JAMA Netw Open*. 2020;3(4):e202682. doi:10.1001/jamanetworkopen.2020.2682
- Chu R, Li C, Wang S, Zou W, Liu G, Yang L. Assessment of KDIGO definitions in patients with histopathologic evidence of acute renal disease. *Clin J Am Soc Nephrol*. 2014;9(7):1175–1182. doi:10.2215/cjn.06150613
- Zhang Z, Navarese EP, Zheng B, et al. Analytics with artificial intelligence to advance the treatment of acute respiratory distress syndrome. *J Evid Based Med*. 2020;13(4):301–312. doi:10.1111/jebm.12418
- Khan ZF, Alotaibi SR. Applications of artificial intelligence and big data analytics in m-health: a healthcare system perspective. *J Healthc Eng*. 2020;2020:8894694. doi:10.1155/2020/8894694
- Friedman J, Hastie T, Tibshirani R. Regularization paths for generalized linear models via coordinate descent. *J Stat Softw*. 2010;33(1):1–22. doi:10.18637/jss.v033.i01
- Kidd AC, McGettrick M, Tsim S, Halligan DL, Bylesjo M, Blyth KG. Survival prediction in mesothelioma using a scalable Lasso regression model: instructions for use and initial performance using clinical predictors. *BMJ Open Respir Res*. 2018;5(1):e000240. doi:10.1136/bmjresp-2017-000240
- Iasonos A, Schrag D, Raj GV, Panageas KS. How to build and interpret a nomogram for cancer prognosis. *J Clin Oncol*. 2008;26(8):1364–1370. doi:10.1200/jco.2007.12.9791
- Vickers AJ, Van Calster B, Steyerberg E. Decision curves, calibration, and subgroups. *J Clin Oncol*. 2017;35(4):472–473. doi:10.1200/jco.2016.69.1576
- Pencina MJ, D'Agostino RB. Overall C as a measure of discrimination in survival analysis: model specific population value and confidence interval estimation. *Stat Med*. 2004;23(13):2109–2123. doi:10.1002/sim.1802
- Vickers AJ, Cronin AM, Elkin EB, Gonen M. Extensions to decision curve analysis, a novel method for evaluating diagnostic tests, prediction models and molecular markers. *BMC Med Inform Decis Mak*. 2008;8(1):53. doi:10.1186/1472-6947-8-53
- Zhang Z, Rousson V, Lee WC, et al. Decision curve analysis: a technical note. *Ann Transl Med*. 2018;6(15):308. doi:10.21037/atm.2018.07.02
- Jalali A, Alvarez-Iglesias A, Roshan D, Newell J, Calabrese R. Visualising statistical models using dynamic nomograms. *PLoS One*. 2019;14(11):e0225253. doi:10.1371/journal.pone.0225253
- Shah S, Leonard AC, Harrison K, Meganathan K, Christianson AL, Thakar CV. Mortality and recovery associated with kidney failure due to acute kidney injury. *Clin J Am Soc Nephrol*. 2020;15(7):995–1006. doi:10.2215/cjn.11200919
- See EJ, Jayasinghe K, Glassford N, et al. Long-term risk of adverse outcomes after acute kidney injury: a systematic review and meta-analysis of cohort studies using consensus definitions of exposure. *Kidney Int*. 2019;95(1):160–172. doi:10.1016/j.kint.2018.08.036
- Fortrie G, de Geus HRH, Betjes MGH. The aftermath of acute kidney injury: a narrative review of long-term mortality and renal function. *Crit Care*. 2019;23(1):24. doi:10.1186/s13054-019-2314-z
- Sreenivasan J, Zhuo M, Khan MS, et al. Anemia (hemoglobin  $\leq$  13 g/dL) as a risk factor for contrast-induced acute kidney injury following coronary angiography. *Am J Cardiol*. 2018;122(6):961–965. doi:10.1016/j.amjcard.2018.06.012
- Karkouti K, Wijeyundera DN, Yau TM, et al. Acute kidney injury after cardiac surgery: focus on modifiable risk factors. *Circulation*. 2009;119(4):495–502. doi:10.1161/circulationaha.108.786913
- Venkatachalam MA, Weinberg JM, Kriz W, Bidani AK. Failed tubule recovery, AKI-CKD transition, and kidney disease progression. *J Am Soc Nephrol*. 2015;26(8):1765–1776. doi:10.1681/asn.2015010006

25. Tanaka S, Tanaka T, Nangaku M. Hypoxia as a key player in the AKI-to-CKD transition. *Am J Physiol Renal Physiol*. 2014;307(11): F1187–1195. doi:10.1152/ajprenal.00425.2014
26. Cheng W, Wu X, Liu Q, et al. Post-contrast acute kidney injury in a hospitalized population: short-, mid-, and long-term outcome and risk factors for adverse events. *Eur Radiol*. 2020;30(6):3516–3527. doi:10.1007/s00330-020-06690-3
27. Pan HC, Wu PC, Wu VC, et al. A nationwide survey of clinical characteristics, management, and outcomes of acute kidney injury (AKI) - patients with and without preexisting chronic kidney disease have different prognoses. *Medicine (Baltimore)*. 2016;95(39):e4987. doi:10.1097/md.0000000000004987
28. Levey AS, Perrone RD, Madias NE. Serum creatinine and renal function. *Annu Rev Med*. 1988;39(1):465–490. doi:10.1146/annurev.me.39.020188.002341
29. James B, Sykes L, Flanagan E, Sinha S, Kalra P, Green D. Mortality risk by peak serum creatinine in hospital episodes complicated by acute kidney injury. *Clin Med (Lond)*. 2020;20(Suppl 2):s109–s110. doi:10.7861/clinmed.20-2-s109

## Diabetes, Metabolic Syndrome and Obesity: Targets and Therapy

Dovepress

### Publish your work in this journal

Diabetes, Metabolic Syndrome and Obesity: Targets and Therapy is an international, peer-reviewed open-access journal committed to the rapid publication of the latest laboratory and clinical findings in the fields of diabetes, metabolic syndrome and obesity research. Original research, review, case reports, hypothesis formation, expert opinion

and commentaries are all considered for publication. The manuscript management system is completely online and includes a very quick and fair peer-review system, which is all easy to use. Visit <http://www.dovepress.com/testimonials.php> to read real quotes from published authors.

Submit your manuscript here: <https://www.dovepress.com/diabetes-metabolic-syndrome-and-obesity-targets-and-therapy-journal>