

# Clinical Analysis of Metagenomic Next-Generation Sequencing Confirmed *Chlamydia psittaci* Pneumonia: A Case Series and Literature Review

This article was published in the following Dove Press journal:  
*Infection and Drug Resistance*

Xin-Qi Teng<sup>1,\*</sup>  
Wen-Cheng Gong<sup>2,\*</sup>  
Ting-Ting Qi<sup>1</sup>  
Guo-Hua Li<sup>1</sup>  
Qiang Qu<sup>3</sup>  
Qiong Lu<sup>1</sup>  
Jian Qu<sup>1</sup>

<sup>1</sup>Department of Pharmacy, The Second Xiangya Hospital, Central South University; Institute of Clinical Pharmacy, Central South University, Changsha, People's Republic of China; <sup>2</sup>Department of Pharmacy, Jiangxi Cancer Hospital of Nanchang University, Jiangxi Cancer Center, Nanchang, Jiangxi, People's Republic of China; <sup>3</sup>Department of Pharmacy, Xiangya Hospital, Central South University, Changsha, People's Republic of China

\*These authors contributed equally to this work

**Introduction:** *Chlamydia psittaci* infection is a zoonotic infectious disease, which mainly inhaled through the lungs when exposed to the secretions of poultry that carry pathogenic bacteria. The traditional respiratory specimens or serological antibody testing is slow, and the false-negative rate is high. Metagenomic next-generation sequencing (mNGS) gives a promising rapid diagnosis tool.

**Methods:** We retrospectively summarized the clinical characteristics of five *C. psittaci* pneumonia patients diagnosed by mNGS, conducted a literature review summarizing the clinical characteristics of patients with *C. psittaci* pneumonia reported since 2010.

**Results:** Five *C. psittaci* pneumonia patients confirmed by mNGS aged from 36 to 66 years with three males. About 60% of patients had a history of contact with avian or poultry. All patients had a high fever over 38.5 °C, cough, hypodynamia, hypoxemia, and dyspnea on admission. Two patients had invasive ventilator support and extracorporeal membrane oxygenation support. Inflammatory index levels on admission and follow-up were all higher than normal values. Doxycycline or moxifloxacin and their combination therapy were used in patients. Four patients improved and were discharged, and one patient died due to multiple organ failures and disseminated intravascular coagulation. We summarized 19 articles including 69 *C. psittaci* pneumonia patients and patients in 11 publications were identified by mNGS, and most patients are treated with tetracycline and quinolone with good outcomes.

**Conclusion:** mNGS is a promising rapid diagnosis tool, which may increase the detection rate and shorten the diagnosis time of *C. psittaci* pneumonia. Further case-control studies are needed to confirm.

**Keywords:** *Chlamydia psittaci*, pneumonia, psittacosis, chlamydia, mNGS

## Introduction

*Chlamydia psittaci* pneumonia is caused by *Chlamydia psittaci* (*C. psittaci*), which can lead to severe pneumonia, adult respiratory distress syndrome, and even death.<sup>1</sup> According to the sequence difference of *C. psittaci* outer membrane protein A gene (ompA), it can be divided into 10 genotypes, namely A-G, WC, E/B, and M56, among which genotype A is the main genotype that causes human infection.<sup>2</sup> About 70% of respiratory tract infections caused by *C. psittaci* are asymptomatic or only with mild symptoms, but 30% of them are severe respiratory illnesses such as

Correspondence: Jian Qu  
Department of Pharmacy, The Second Xiangya Hospital, Central South University, No. 139 Middle Renmin Road, Changsha, 410011, People's Republic of China  
Tel +86-15973190614  
Fax +86-731-85292128  
Email qujianstanley@csu.edu.cn

community-acquired pneumonia with atypical symptoms, bronchitis, and upper respiratory tract infections.<sup>3</sup> Contacting with birds or poultry is regarded as the main risk factor for psittacosis.<sup>1</sup> The clinical symptoms of *C. psittaci* infection are quite different and lack specificity, which ranges in severity from mild to severe. Since the clinical manifestations of *C. psittaci* are similar to influenza symptoms, and the extrapulmonary manifestations are similar to Legionella, it needs to be differentiated from influenza and Legionella.<sup>4</sup> Recent publications also reported the co-infection of SARS-CoV-2 with *Chlamydia*,<sup>5-7</sup> which makes infectious diseases more complex.

The culture of *C. psittaci* from respiratory secretions in special media is possible but difficult, and it is mainly performed in specialized laboratories only because of the high infectivity of this pathogen. Specific diagnostic testing is serological, which is regarded as the gold standard for *C. psittaci* pneumonia. Moreover, the micro-immunofluorescence test (MIF) is the most accurate serologic test for *C. psittaci* pneumonia but is also performed only in specialized laboratories. Polymerase chain reaction assay (PCR) is used to confirm the strong clinical suspicion of a possible diagnosis of psittacosis especially, to distinguish it from other chlamydial species.<sup>8</sup> And complement fixation (CF) is also an acceptable diagnostic method. Detection methods for *C. psittaci*, such as PCR, CF, and MIF are not routinely available in most hospitals in China. Because of its non-specific symptoms and the limitations of traditional tests, *C. psittaci* pneumonia is easily underdiagnosed and misdiagnosed.<sup>9</sup>

Metagenomic next-generation sequencing (mNGS) can quickly and accurately identify potential pathogens, whether they are bacteria, fungi, viruses, or parasites.<sup>10</sup> It is increasingly used for the diagnosis of infectious diseases, especially when traditional diagnostic methods have limitations.<sup>11</sup> Studies have shown that mNGS is the most promising comprehensive diagnosis method for infection, especially for severe pneumonia.<sup>12</sup> Recently, several studies have reported the application of mNGS in diagnosing *C. psittaci* pneumonia, two case reports describing 5 and 9 cases of *C. psittaci* diagnosed by mNGS<sup>13,14</sup>.

We retrospectively summarized the clinical characteristics of five *C. psittaci* pneumonia patients diagnosed by mNGS in our hospital. Besides, we conducted a literature review of patients with *C. psittaci* pneumonia reported since 2010, with the attention to summarize the diagnostic methods and anti-infective drugs. We also summarized the

clinical outcome and history of exposure to avian or poultry of these infection patients to provide a reference for future *C. psittaci* pneumonia infection patients' diagnosis and treatment. We present the following article following the CARE reporting checklist.

## Case Presentations

### Patients' Information

We carried out a retrospective case series analysis of five patients admitted to the Second Xiangya Hospital of Central South University since 2018. We collected the clinical data of all patients confirmed to have *C. psittaci* pneumonia. Sex, age, clinical examination indexes such as procalcitonin (PCT), C-reactive protein (CRP), erythrocyte sedimentation rate (ESR), comprehensive computed tomography (CT), and arterial blood gas analysis were extracted from electronic medical records. The treatment of antibiotics, outcomes, and any relevant follow-up data were also collected.

The Ethics Committees of the Second Xiangya Hospital of Central South University (LYF-2020021) approved this study. Informed consent was obtained from patients and guardians. This study was carried out by the ethical standards laid down in the 1964 Declaration of Helsinki and its later amendments. All data were anonymized before analysis.

As the symptoms of the patients were sudden, some patients had no sputum and their blood oxygen saturation was low, we did not perform bronchoscopy for them on admission. The blood was used for performing mNGS testing on admission for all five patients, and only case 5 performed bronchoalveolar lavage fluid (BAFL) mNGS testing on admission. All five patients were positive for *C. psittaci* DNA fragments in the blood mNGS test. Moreover, BAFL mNGS of case 5 result showed *Klebsiella* DNA fragments. The median duration from admission to the mNGS pathogenic diagnosis of the 5 cases was 3 days (range from 2 to 4). The median of mNGS detection sequence number of *C. psittaci* was 217 (range from 175 to 289). No pathogenic microorganisms were found in the sputum, BAFL, and blood culture of the patient after admission to our hospital. We also conducted serological verification and PCR for five cases after an atypical pathogen was identified by mNGS. Serological detection of antibody to *C. pneumoniae* was positive only in case 2 and the PCR of *C. pneumoniae* was negative in all patients. While the serological detection of antibody,

PCR, MIF, and CF of *C. psittaci* cannot be performed in our hospital.

There were three male and two female patients with a median age of 51 years (range from 36 to 66). 60% of patients had type 2 diabetes. Three of five patients had a history of contact with avian or poultry. All patients had a high fever over 38.5 °C, cough, hypodynamia, hypoxemia, and dyspnea. Two of five patients had a headache. In the course of treatment, two patients had invasive ventilator support and Extracorporeal Membrane Oxygenation (ECOM) support. The median APACHE II was 17.6 (range from 8 to 22). Days from illness to respiratory failure were 4.8 (2–8) days.

## Laboratory Test

mNGS was conducted using the following operational steps according to the company's operating procedures (The Beijing Genomics Institute, Beijing, China). Briefly, clinical samples (blood or BALF) were collected by following the standards of aseptic processing procedures. Nucleic acid extraction was conducted and the extracted DNA was subjected to processes of interruption, end repair, library construction, and sequencing. The mapped data were processed for advanced data analysis. Lists of suspected pathogenic microorganisms were produced, which included the numbers of strictly mapped reads, coverage rates, and depth. The clinical diagnosis was determined by considering all the clinical manifestations, possible pathogens identified by mNGS, and other laboratory tests together. On admission and during the hospital, inflammatory markers such as PCT, CRP, ESR, kidney, and liver function index, CT, and X-ray data were detected according to the patients' condition.

Laboratory inspection parameters of the five patients on admission were shown in Table 2. Four patients had lower hemoglobin and the levels were 108.6 (range 68–148) g/L. The levels of CRP, PCT, and ESR on admission were all higher than normal values. Oxygen partial pressure and partial pressure of carbon dioxide of all patients were significantly lower than normal values.

After admission, follow-up laboratory testing results showed that the levels of inflammatory markers including WBC, percentage of neutrophils, CRP, PCT, ESR were all higher than normal values (Table 1). Moreover, the values of CK, lactate dehydrogenase (LDH), ALT, and AST were all higher than normal values in all five patients. Three patients had hypokalemia and the potassium levels were range from 2.7 to 3.3 mmol/L.

Chest CT and X-ray of patients showed that lungs were exuding consolidation foci, bilateral pectoral effusions, consolidation. After treatment, the image of four patients improved compared with those on admission, and the patients' lung exudation, consolidation, and bilateral pleural effusion were less than before (Figures 1 and 2).

## Treatment and Outcome

After *C. psittaci* pneumonia was confirmed, one of the three male patients received symptomatic anti-infective treatment with moxifloxacin (400mg ivgtt qd) and with adjuvant non-invasive ventilator therapy. The other two male patients received symptomatic anti-infective therapy with doxycycline (100mg po q12h) and were treated with high flow nasal cannula therapy. All three male patients were improved and discharged after more than 10 days of treatment. Two female patients were transferred to our hospital after invasive ventilator adjuvant treatment with tracheal intubation from other hospitals. They were treated with moxifloxacin (400mg ivgtt qd) combined with doxycycline (100mg po q12h) for symptomatic anti-infective therapy. The two female patients were treated with ECOM and ventilator adjuvant therapy due to their critical illness. One patient was removed ECOM after five days of treatment with blood oxygen saturation and oxygen partial pressure was significantly improved. After 3 days of consecutive treatment, the invasive ventilator was removed. The patient continued to receive treatment and was discharged from the hospital. Another 35-years old female patient (case 5) was critically ill and the disease progressed rapidly and finally die. One week before admission, the B-mode ultrasound showed that the patient was in early intrauterine pregnancy with a size of about 6 weeks, with no germ and heartbeat. The patient was transferred to the respiratory ICU of our hospital after oral endotracheal intubation with a high fever of 39 °C and blood oxygen saturation of 65%. Chest radiograph showed multiple exudative lesions in both lungs and pleural effusion on the right side. After admission, she was given meropenem combined with moxifloxacin and ganciclovir. On the third day after admission, mNGS of blood indicated *C. psittaci*, with a sequence number of 533. mNGS of BAFL indicated *Klebsiella pneumoniae*, with a sequence number of 175. Then the patient was given an injection of doxycycline. On the 7th day of admission, the patient's blood oxygen saturation was still 70% (through endotracheal intubation and invasive ventilator), and ECOM treatment was performed. On the 8th day of admission, the

**Table 1** Clinical Characteristics of the Five *C. Psittaci* Pneumonia Cases

Characteristics	Abnormal Patients/ Total Patients, n (%)	Median Value (Range)
Demographics		
Age, median (range, years)		51 (36–66)
History of exposure to avian or poultry	3/5 (60)	
Underlying disease	3/5 (60)	
Clinical manifestations		
Fever > 38.5 °C	5/5 (100)	39.1 (38.7–40.5)
Cough, hypodynamia, dyspnea	5/5 (100)	
Headache	2/5 (40)	
Hypoxemia	5/5 (100)	
Invasive ventilator support	2/5 (40)	
ECOM support	2/5 (40)	
APACHE II		17.6 (8–22)
Days from illness to respiratory failure		4.8 (2–8)
NGS detection sequence number		217 (175–289)
Laboratory testing		
WBC (normal 4–10, × 10 <sup>9</sup> /L)	4/5 (80)	14.35 (10.4–20.08)
Neutrophil ratio (normal 45–75%)	5/5 (100)	93.03 (80.5–97.7)
CRP (normal 0–8 mg/L)	5/5 (100)	129.83 (16.8–423)
PCT (normal 0–0.05 ng/mL)	5/5 (100)	10.12 (0.058–100)
ESR (normal 0–15mm/h)	5/5 (100)	65.64 (25–100)
CK (normal 30–135 U/L)	5/5 (100)	2261.18 (14–8842.2)
LDH (normal 109–245 U/L)	5/5 (100)	737.96 (252.9–1433.1)
ALT (normal 9–50 U/L)	5/5 (100)	310.17 (65.7–2889.7)

(Continued)

**Table 1** (Continued).

Characteristics	Abnormal Patients/ Total Patients, n (%)	Median Value (Range)
AST (normal 15–40 U/L)	5/5 (100)	1554.11 (40.4–23,553.3)
Hypokalemia (normal 3.5–5.3 mmol/L)	3/5 (80)	3.1 (2.7–3.3)*
Hemoglobin		
Treatment		
Doxycycline	2/5 (40)	
Moxifloxacin	1/5 (20)	
Moxifloxacin +Doxycycline	2/5 (40)	
The duration from admission to diagnosis (days)		3 (2–4)
Treatment result		
Survive	4/5 (80)	
Death	1/5 (20)	

**Note:** \*The potassium levels just analyzed the values of hypokalemia patients.**Abbreviations:** ECOM, extracorporeal membrane oxygenation; APACHE, The Acute Physiology and Chronic Health Evaluation; CK, creatine kinase; CRP, C-reactive protein; CT, computed tomography; LDH, lactate dehydrogenase; PCT, procalcitonin; ALT, alanine transaminase; AST, aspartate aminotransferase; WBC, white blood cell; ESR, erythrocyte sedimentation rate.

patient died due to septic shock, disseminated intravascular coagulation (DIC), and multiple organ failures.

## Literature Review

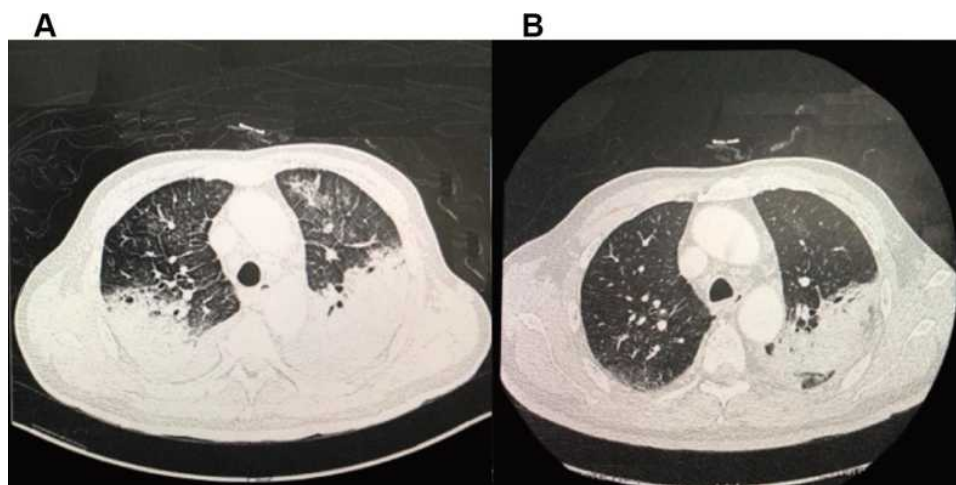
We searched the databases including PubMed, EMBASE, Web of Science, Wanfang, and Chinese National Knowledge Infrastructure (CNKI) from 1st Jan. 2010 to 1st Oct. 2020. The searching strategy was “Chlamydia psittaci” or “Chlamydia psittaci pneumonia”. Dr. Jian Qu and Dr. Wen-Cheng Gong reviewed all relevant articles to identify potentially eligible studies. We conducted this literature review of patients with *C. psittaci* pneumonia to summarize the diagnostic methods and anti-infective drugs, and we also summarized the clinical outcome and history of exposure to avian or poultry of these infection patients to provide a reference for future *C. psittaci* pneumonia infection patients’ diagnosis and treatment. The data about authors, reported time, number of cases,

**Table 2** Laboratory Inspections Parameters of the Five Patients on Admission

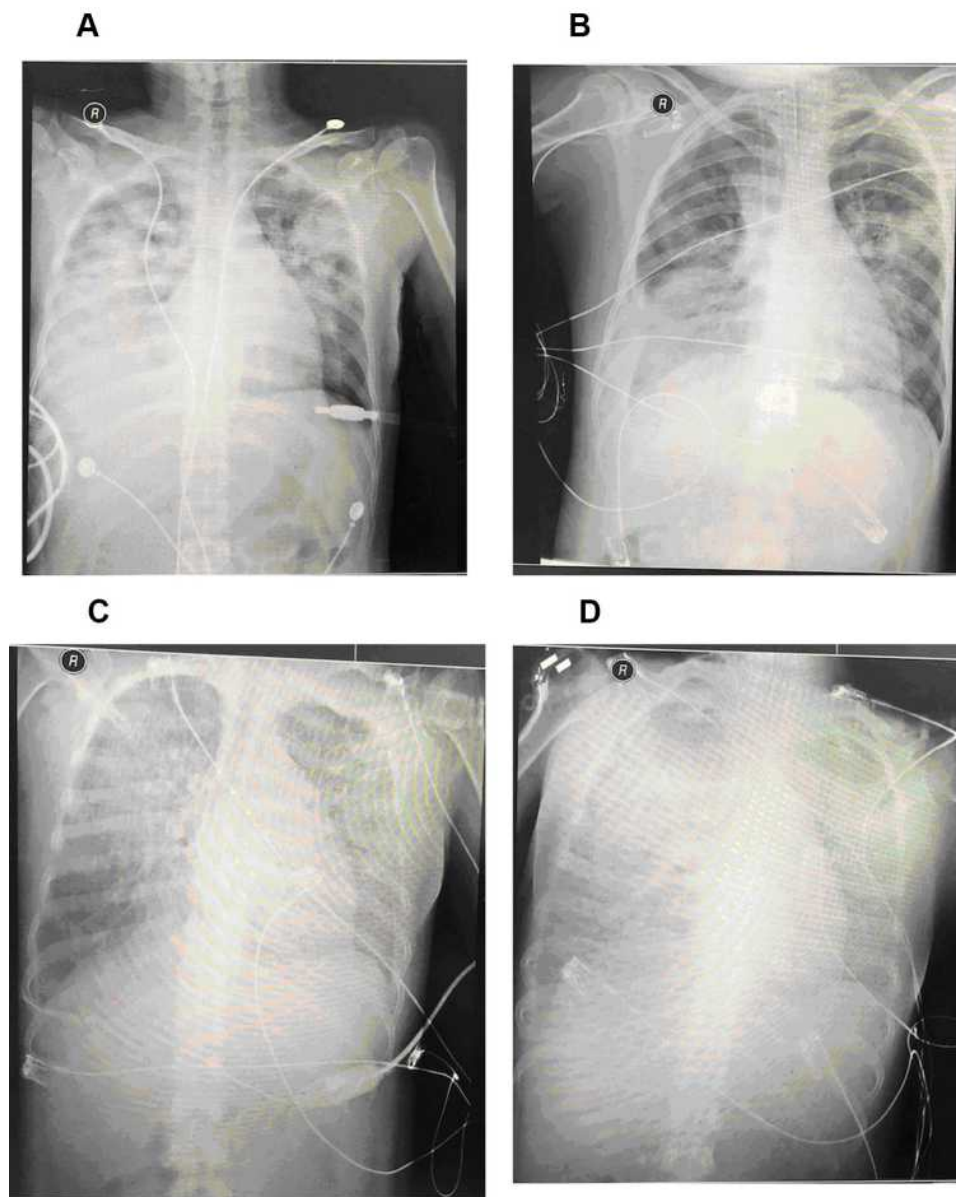
Inspection Items	Case 1	Case 2	Case 3	Case 4	Case5	Reference Value
PH	7.504	7.47	7.52	7.4	7.53	7.35–7.45
Oxygen partial pressure (mmHg)	64.6	42	53.1	59	58	80–100
Partial pressure of carbon dioxide (mmHg)	28.8	29	26.7	27	29	35–45
White blood cell count ( $\times 10^9/L$ )	16.88	8.43	13.56	5.66	2.1	3.5–9.5
Hemoglobin (g/L)	128	127	68	148	72	130–175
Platelets ( $\times 10^9/L$ )	183	129	325	83	100	125–350
C reactive protein (mg/L)	423	109.12	434	179.5	191.59	0–8
Procalcitonin (ng/mL)	18.17	8.1	13.89	58.5	2.75	0–0.05
Erythrocyte sedimentation rate (mm/h)	68	100	–	82	32	0–15
Alanine aminotransferase (IU/L)	146.7	91.7	237	33.4	79.2	9–50
Aspartate aminotransferase (IU/L)	139	115.8	587.6	60	246	15–40
Total bilirubin ( $\mu\text{mol/L}$ )	20.4	8.9	16.3	12.6	5.8	3.4–17.1
Serum creatinine ( $\mu\text{mol/L}$ )	71.4	79.7	48.6	338	53.5	44–133
Outcome	Survival	Survival	Survival	Survival	Death	

ethnics, history of exposure to avian or poultry, anti-infective drugs regimen, and clinical outcome were collected. We found 794 publications. After excluded the full text could not be found or provided no information we needed about *C. psittaci* pneumonia or no original data or the Chlamydia was not specified. Finally, 19 articles were enrolled in further review.

The summary of the detailed information was shown in Table 3. The articles were published from 2012 to 2020. With the development of detection technology, the number of articles reported tends to increase (Figure 3). Since 2019, there were 13 articles reported *C. psittaci* pneumonia and among them, 10 articles using mNGS to detect *C. psittaci*. There was a total of 69 *C. psittaci* pneumonia



**Figure 1** Chest computed tomography (CT) scans of a 66-year-old man with *C. psittaci* pneumonia. Lungs were exuding consolidation foci, bilateral pectoral effusions, consolidation on the 8th day of hospitalization (A). After treatment, on the 18th day of hospitalization (B), the image of four patients improved, and the patients' lung exudation, consolidation, and bilateral pleural effusion were less than before.



**Figure 2** Chest X-ray of a 36-year-old pregnant female patient with *C. psittaci* pneumonia and died of septic shock, DIC, and multiple organ failure. (A) on the first day of hospitalization, (B) on the third day of hospitalization, (C) on the sixth day of hospitalization, (D) on the seventh day of hospitalization.

patients were reported and most patients had a history of exposure to avian or poultry. Most patients treated with doxycycline, moxifloxacin, meropenem, or their combinations, and three patients used ECOM support. Most of the patients' treatment improved and four patients died.

## Discussion

We retrospectively analyzed five cases of psittacosis pneumonia diagnosed using mNGS and summarized the clinical characteristics including disease progression, treatments, and outcomes, etc. Moreover, we also carried out a literature review that summarized the existing

research and reports about *C. psittaci* pneumonia. In our study, five *C. psittaci* pneumonia patients confirmed by mNGS aged from 36 to 66 years with three males. 60% of patients had underlying diseases Type 2 diabetes. Three of these five patients had a history of contact with avian or poultry. All patients had a high fever over 38.5 °C, cough, hypodynamia, hypoxemia, and dyspnea on admission. Two patients had invasive ventilator support and ECOM support. The levels of CRP, PCT, and ESR on admission and follow-up were all higher than normal values. Doxycycline or moxifloxacin monotherapy was accounted for 1/5 (20%) and 2/5 (40%) patients, and combination

**Table 3** Summary of Case Series and Case Report of *C. psittaci* Pneumonia

Author	Reported Time	Number of Reported Cases	Reported Area	Methods	Anti-Infective Drugs	Clinical Outcome	History of Exposure to Avian or Poultry
Gacouin <sup>4</sup>	2012	13	France	mNGS	Tetracycline ± Erythromycin/Levofloxacin	11 patients improved, 2 patients died	Yes
Laroucau <sup>33</sup>	2013	8	France	PCR	Macrolides + Cephalosporins	Improved	Yes
Chau <sup>34</sup>	2015	3	Hong Kong	PCR	Doxycycline	Improved	Yes
Mair-Jenkins <sup>35</sup>	2015	4	United Kingdom	Serology and PCR	Not stated	Improved	No history of direct contact, but someone raises pigeons near the office building
Spoorenberg <sup>36</sup>	2016	7	Netherlands	PCR, MIF	2 patients used Tetracycline, Macrolide or Quinolone; 1 patients used β-lactam	Improved	6 patients had an exposure history
Cipriano <sup>37</sup>	2016	1	Portugal	IIF	Amoxicillin/Clenaucic Acid, Azithromycin	Improved	Yes
Qiu <sup>29</sup>	2019	1	China	mNGS	Doxycycline + Moxifloxacin	Improved	No
Zhu <sup>38</sup>	2019	1	China	mNGS	Moxifloxacin	Improved	Yes
Shi <sup>39</sup>	2019	1	China	PM-seq	Piperacillin/tazobactam + Minocycline	Improved	Yes
Liu <sup>28</sup>	2019	1	China	Antibody test	Moxifloxacin	Improved	Yes
Gu <sup>13</sup>	2019	5	China	mNGS, IIF	1 patient used Minocycline +Erythromycin	Improved	4 patients had an exposure history
					2 patients used Doxycycline+ Moxifloxacin		
					2 patients used Moxifloxacin		
Chen <sup>14</sup>	2020	9	China	mNGS	Minocycline	8 patients improved, 1 patient died	7 patients had an exposure history
He <sup>40</sup>	2020	1	China	mNGS	Doxycycline	Improved	Yes
Chen <sup>30</sup>	2020	1	China	mNGS	Moxifloxacin +Cefoperazone Sodium Sulbactam/Meropenem	Improved	Not stated

(Continued)

Table 3 (Continued).

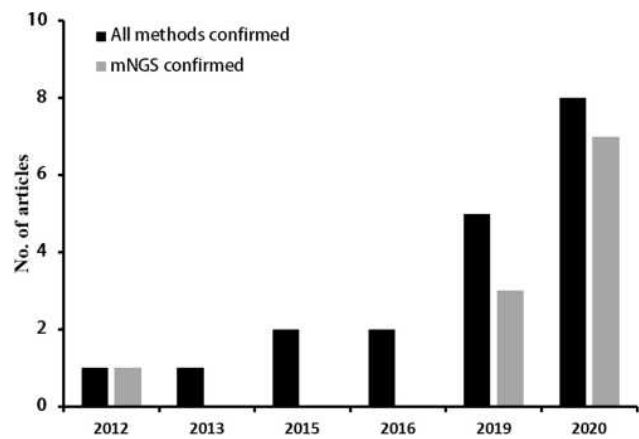
Author	Reported Time	Number of Reported Cases	Reported Area	Methods	Anti-Infective Drugs	Clinical Outcome	History of Exposure to Avian or Poultry
Katsura <sup>41</sup>	2020	1	Japan	PCR	Meropenem+Gamma globulin	Died	Yes
Zhang <sup>42</sup>	2020	1	China	mNGS	Doxycycline +Moxifloxacin	Improved	Yes
Zhang <sup>43</sup>	2020	1	China	mNGS	Doxycycline + ceftazidime/meropenem	Improved	No
Fernández <sup>44</sup>	2020	5	Murcia	mNGS	3 patients used Levofloxacin	Improved	Yes
					+ Doxycycline		
					2 patients used Cephalosporin		
					+ Doxycycline		
Luo <sup>45</sup>	2020	5	China	mNGS	2 patients used Doxycycline	Improved	Yes
					1 patients used Doxycycline + Meropenem		
					1 patients used Doxycycline + Piperacillin/tazobactam		
					1 patients used Doxycycline + Levofloxacin		

**Abbreviations:** mNGS, metagenomics next-generation sequencing; PCR, polymerase chain reaction; MIF, micro-Immunofluorescence; IIF, indirect immunofluorescence; PM-seq, pathogenic microorganisms sequencing.

therapy was accounted for 2/5 (40%) patients. Four patients improved and were discharged, and one patient died due to multiple organ failures and disseminated intravascular coagulation.

The lung manifestations are mainly cough, dry cough, shortness of breath, the rapid progress of lung disease, and occasionally acute respiratory distress syndrome (ARDS).<sup>15</sup> In the five cases reported in this article, 3 patients had ARDS. And there were even case reports showing only abnormal liver function.<sup>16</sup> In the initial auscultation, the lung lesions of *C. psittaci* pneumonia were often underestimated. The chest radiograph showed infiltrating patches with uneven density, which can seriously affect all lung lobes. CT of the lungs showed consolidation or ground glass-like changes, especially the

lower lung, with pleural involvement and pleural effusion.<sup>17</sup> After treatment, the patients' cough and fever improved, but the oxygenation index recovered slowly. According to the reporting of literature, the absorption of the lesion was slow, with an average absorption time of 6 weeks, up to 20 weeks.<sup>18</sup> The laboratory inspection parameters of the five patients on admission showed that two patients had WBC > 10×10<sup>9</sup>/L, and three cases had PCT > 10 ng/mL, and the chest radiology presented mainly consolidation. The mNGS detection of case 5 also showed *Klebsiella pneumoniae* infection in addition to *C. psittaci* infection, but there were no other bacteria was isolated in the other four cases. Although other bacteria were not found in culture, other bacterial coinfections cannot be ruled out because of the high WBC and PCT value, and



**Figure 3** The summary of *C. psittaci* pneumonia literature review from 2010 to 2020 year.

the chest radiology characterized by consolidation. Especially, some patients were carried out invasive ventilator support or ECOM. Therefore, patients are at risk for hospital-acquired pneumonia and ventilator-associated pneumonia infection. Before admission, the community-acquired pneumonia was also treated with antibiotics such as cephalosporins and quinolones in other hospitals before the diagnosis of *C. psittaci* pneumonia.

According to the control requirements of *C. psittaci* issued by the National Public Health Veterinary Association, the confirmed diagnosis of human *C. psittaci* pneumonia only needs to meet one of the following two standards: 1). Isolate *C. psittaci* from respiratory specimens (sputum, pleural fluid, tissue, etc.) or blood specimens 2). Serological examination: Measure the *C. psittaci* IgG antibody in the acute and convalescent phases during the interval of 2–4 weeks, the convalescent phase is more than four times higher than the acute phase. If the patient meets one of the following two standards, it may be infected: 1). Serum examination, *C. psittaci* IgM  $\geq$  32; 2). *C. psittaci* DNA can be detected through PCR amplification of respiratory specimens (sputum, pleural fluid, tissue, etc.).<sup>19</sup> Since *C. psittaci* is strictly intracellular parasitic, its direct isolation and cultivation are very difficult and cannot be carried out routinely. At present, the clinical presentation and the positive serological result using MIF with paired sera are the most often used diagnostic methods of *C. psittaci*.<sup>1</sup> MIF<sup>20</sup> and PCR gene expansion detection have become auxiliary detection of molecular biological diagnosis due to their high sensitivity and specificity.<sup>21</sup> Although MIF is more sensitive and specific than complement fixation (CF) tests, the test still

displays cross-reactivity with other Chlamydia species in some instances.<sup>22</sup> PCR testing is not clinical laboratory improvement amendments validated currently. mNGS can be used to detect pathogens that cannot be detected by traditional methods.<sup>23</sup> Patients introduced in this article were all severely infected when they were admitted to our hospital, with respiratory failure, and dry cough without sputum. Due to the high risk of bronchoscopy and difficulty in taking respiratory tract specimens, the blood or BAFL samples of patients were sent out for mNGS testing and finally reported *C. psittaci* infection. Early pathogenic diagnosis can greatly benefit patients, and of the 5 patients reported in this article, 4 patients improved and were discharged. Our literature review also found that with the development of technology, the number of *C. psittaci* detected increased year by year, and the articles reported *C. psittaci* pneumonia via mNGS increased year by year (Figure 3 and Table 3).

Tetracyclines, macrolides, and quinolones can interfere with DNA and protein synthesis, therefore, these three kinds of antibiotics can be used to treat *C. psittaci*.<sup>24</sup> At present, both in China and other country, tetracyclines are the first choice for the treatment of *C. psittaci* pneumonia including tetracycline, doxycycline, and minocycline.<sup>25,26</sup> In severe cases, doxycycline can be administered intravenously. The treatment of the patient in case 2 with doxycycline is also effective. Macrolide drugs such as azithromycin and fluoroquinolones have been confirmed to have antibacterial activity against *C. psittaci* in vitro,<sup>26,27</sup> In particular, moxifloxacin has strong antibacterial activity against Chlamydia, and there are case reports at home and abroad that the use of fluoroquinolone drugs is effective.<sup>28–31</sup> Given the lack of experience in the use of tetracyclines in our hospital, Chlamydia trachomatis, which is the same species as *C. psittaci* in my country, is highly resistant to tetracycline,<sup>32</sup> so the treatment for case 1 patient used moxifloxacin and it was effective. After five patients were treated, four patients were improved and discharged. Among them, one patient was treated with moxifloxacin, two patients were treated with doxycycline, and the other two patients were treated with moxifloxacin plus doxycycline. Current *C. psittaci* Pneumonia treatment guidelines recommend the addition of macrolide or quinolone to the initial regimen of severe *C. psittaci* in any case. According to current reports, it is unclear whether combination medication is more effective than single medication for patients. Further case-control studies with larger samples are needed to find the optimal treatment.

In this article, we have searched the relevant literature. At present, most cases of human infection with *C. psittaci* are reported in scattered cases and details are listed in Table 3. With the development of detection technology, mNGS became a routine examination for etiology. Therefore, more and more *C. psittaci* pneumonia was diagnosed and treated according to guidelines. Our literature review summarized 19 articles including 69 *C. psittaci* pneumonia patients. Patients in 11 articles were identified by mNGS, including 9 articles were reported in China. In recent years, the reports of mNGS for *C. psittaci* pneumonia diagnosis have increased, especially in China. We found that most patients had a history of exposure to avian or poultry. Therefore, epidemiological data combined with mNGS detection is helpful for the early diagnosis of *C. psittaci* pneumonia. Most patients are treated with doxycycline, moxifloxacin, or their combinations. Three patients used ECOM support and they are all improved. Among these 69 patients in our literature review, 65 patients of *C. psittaci* pneumonia improved and four patients died. In the future, further case-control studies with a large sample size are needed to find better diagnostic methods and better anti-infective drugs.

## Conclusions

The history of contact with avian or poultry and the typical symptoms (high fever over 38.5 °C, cough, hypodynamia, hypoxemia, and dyspnea) are important for *C. psittaci* pneumonia diagnosis. Moxifloxacin, doxycycline, or their combinations are effective treatment options for *C. psittaci* pneumonia. mNGS is a promising rapid diagnosis tool, which may increase the detection rate and shorten the diagnosis time of *C. psittaci* pneumonia. Further case-control studies are needed to confirm.

## Abbreviations

*C. psittaci*, *Chlamydia psittaci*; PCR, polymerase chain reaction assay; CF, complement fixation; mNGS, Metagenomic next-generation sequencing; PCT, procalcitonin; CRP, C-reactive protein; ESR, erythrocyte sedimentation rate; CT, computed tomography; ECOM, Extracorporeal Membrane Oxygenation; LDH, lactate dehydrogenase; DIC, disseminated intravascular coagulation; ARDS, acute respiratory distress syndrome.

## Data Sharing Statement

Not applicable.

## Ethics Approval and Informed Consent

The Ethics Committees of the Second Xiangya Hospital of Central South University (LYF-2020021) approved this study. Informed consents were obtained from patients and guardians.

## Acknowledgments

We thank the patients enrolled in our study.

## Author Contributions

All authors made a significant contribution to the work reported, whether that is in the conception, study design, execution, acquisition of data, analysis and interpretation, or in all these areas; took part in drafting, revising or critically reviewing the article; gave final approval of the version to be published; have agreed on the journal to which the article has been submitted; and agree to be accountable for all aspects of the work. All authors have read and approved the manuscript.

## Funding

No funding or sponsorship was received for this study or publication of this article.

## Disclosure

The authors report no conflicts of interest in this work.

## References

- Balsamo G, Maxted AM, Midla JW, et al. Compendium of measures to control chlamydia psittaci infection among humans (Psittacosis) and Pet Birds (Avian Chlamydiosis), 2017. *J Avian Med Surg.* 2017;31(3):262–282. doi:10.1647/217-265
- Knittler MR, Berndt A, Bocker S, et al. Chlamydia psittaci: new insights into genomic diversity, clinical pathology, host-pathogen interaction and anti-bacterial immunity. *Int J Med Microbiol.* 2014;304(7):877–893. doi:10.1016/j.ijmm.2014.06.010
- Hahn DL, Azenabor AA, Beatty WL, Byrne GI. Chlamydia pneumoniae as a respiratory pathogen. *Front Biosci.* 2002;7:e66–e76. doi:10.2741/hahn
- Gacouin A, Revest M, Letheulle J, et al. Distinctive features between community-acquired pneumonia (CAP) due to Chlamydia psittaci and CAP due to Legionella pneumophila admitted to the intensive care unit (ICU). *Eur J Clin Microbiol Infect Dis.* 2012;31(10):2713–2718. doi:10.1007/s10096-012-1618-6
- Oliva A, Siccardi G, Migliarini A, et al. Co-infection of SARS-CoV-2 with Chlamydia or Mycoplasma pneumoniae: a case series and review of the literature. *Infection.* 2020;48:871–877. doi:10.1007/s15010-020-01483-8
- Ma L, Wang W, Le Grange JM, et al. Coinfection of SARS-CoV-2 and other respiratory pathogens. *Infect Drug Resist.* 2020;13:3045–3053. doi:10.2147/IDR.S267238

7. Lei JH, Xu Y, Jiang YF, Shi ZH, Guo T. Clustering cases of Chlamydia psittaci pneumonia in COVID-19 screening ward staff. *Clin Infect Dis*. 2020. doi:10.1093/cid/ciaa1681
8. Cunha BA. The atypical pneumonias: clinical diagnosis and importance. *Clin Microbiol Infect*. 2006;12(Suppl 3):12–24. doi:10.1111/j.1469-0691.2006.01393.x
9. de Gier B, Hogerwerf L, Dijkstra F, van der Hoek W. Disease burden of psittacosis in the Netherlands. *Epidemiol Infect*. 2018;146(3):303–305. doi:10.1017/S0950268817003065
10. Schlaberg R, Chiu CY, Miller S, et al. Validation of metagenomic next-generation sequencing tests for universal pathogen detection. *Arch Pathol Lab Med*. 2017;141(6):776–786. doi:10.5858/arpa.2016-0539-RA
11. Gu W, Miller S, Chiu CY. Clinical metagenomic next-generation sequencing for pathogen detection. *Annu Rev Pathol*. 2019;14:319–338. doi:10.1146/annurev-pathmechdis-012418-012751
12. Langelier C, Kalantar KL, Moazed F, et al. Integrating host response and unbiased microbe detection for lower respiratory tract infection diagnosis in critically ill adults. *Proc Natl Acad Sci U S A*. 2018;115(52):E12353–E12362. doi:10.1073/pnas.1809700115
13. Gu L, Liu W, Ru M, et al. The application of metagenomic next-generation sequencing in diagnosing Chlamydia psittaci pneumonia: a report of five cases. *BMC Pulm Med*. 2020;20(1):65. doi:10.1186/s12890-020-1098-x
14. Chen X, Cao K, Wei Y, et al. Metagenomic next-generation sequencing in the diagnosis of severe pneumonias caused by Chlamydia psittaci. *Infection*. 2020;48(4):535–542. doi:10.1007/s15010-020-01429-0
15. Gough SL, Carrick J, Raidal SL, et al. Chlamydia psittaci infection as a cause of respiratory disease in neonatal foals. *Equine Vet J*. 2020;52(2):244–249. doi:10.1111/evj.13170
16. Carella G, Marra L, Vallot T. [Hepatic psittacosis: a case of liver abnormality diagnosed by ultrasonography]. *Presse Med*. 1996;25(5):197–198. French.
17. Branley JM, Weston KM, England J, Dwyer DE, Sorrell TC. Clinical features of endemic community-acquired psittacosis. *New Microbes New Infect*. 2014;2(1):7–12. doi:10.1002/2052-2975.29
18. Zhang J, Fu J, Wang S, Zhang S, Sun G, Tang G. The chest radiological manifestation in psittacosis (in chinese). *CHIN J RADIOLOG*. 2005;39(11):1134–1137.
19. Smith KA, Campbell CT, Murphy J, Stobierski MG, Tengelsen LA. Compendium of measures to control chlamydia psittaci infection among humans (Psittacosis) and Pet Birds (Avian Chlamydiosis), 2010 National Association of State Public Health Veterinarians (NASPHV). *J Exotic Pet Med*. 2011;20(1):32–45. doi:10.1053/j.jepm.2010.11.007
20. Hogerwerf L, De Gier B, Baan B, Van Der Hoek W. Chlamydia psittaci (psittacosis) as a cause of community-acquired pneumonia: a systematic review and meta-analysis. *Epidemiol Infect*. 2017;145(15):3096–3105. doi:10.1017/S0950268817002060
21. Forbes JD, Knox NC, Peterson CL, Reimer AR. Highlighting clinical metagenomics for enhanced diagnostic decision-making: a step towards wider implementation. *Comput Struct Biotechnol J*. 2018;16:108–120. doi:10.1016/j.csbj.2018.02.006
22. Persson K, Boman J. Comparison of five serologic tests for diagnosis of acute infections by Chlamydia pneumoniae. *Clin Diagn Lab Immunol*. 2000;7(5):739–744. doi:10.1128/CDLI.7.5.739-744.2000
23. Zhu Y, Zhang W. Clinical application of next-generation sequencing in etiological diagnosis of sepsis (in chinese). *J Microbes Infect*. 2018;13(2):97–101.
24. Kohlhoff SA, Hammerschlag MR. Treatment of Chlamydial infections: 2014 update. *Expert Opin Pharmacother*. 2015;16(2):205–212. doi:10.1517/14656566.2015.999041
25. Beeckman DS, Vanrompay DC. Zoonotic Chlamydia psittaci infections from a clinical perspective. *Clin Microbiol Infect*. 2009;15(1):11–17. doi:10.1111/j.1469-0691.2008.02669.x
26. Donati M, Rodriguez Fermepin M, Olmo A, D'Apote L, Cevenini R. Comparative in-vitro activity of moxifloxacin, minocycline and azithromycin against Chlamydia spp. *J Antimicrob Chemother*. 1999;43(6):825–827. doi:10.1093/jac/43.6.825
27. Deb C, Dehollogne C, Dumont A, et al. Managing a cluster outbreak of psittacosis in Belgium linked to a pet shop visit in The Netherlands. *Epidemiol Infect*. 2016;144(8):1710–1716. doi:10.1017/S0950268815003106
28. Liu L, Wu W, Geng Y, et al. A case report of chlamydia psittaci pneumonia and literature review (in chinese). *J Clin Pulm Med*. 2015;8(8):1543–1544.
29. Qiu C, Liu R, X H, Xiao X. A case of Chlamydia psittaci pneumonia detected by NGS (in chinese). *J Gannan Med Univ*. 2019;39(9):940–942.
30. Chen Q, Yu X, Chen J. Pharmaceutical care of a patient with chlamydia psittaci infection (in chinese). *Chin J Clin Pharmacol*. 2020;36(15):2320–2322.
31. Olivares-Gazca JC, Priesca-Marin JM, Ojeda-Laguna M, et al. Infusion of convalescent plasma is associated with clinical improvement in critically ill Patients with COVID-19: a Pilot Study. *Rev Invest Clin*. 2020;72(3). doi:10.24875/RIC.20000237.
32. Li M, Zhang X, Huang K, et al. Presence of Chlamydia trachomatis and Mycoplasma spp., but not Neisseria gonorrhoeae and Treponema pallidum, in women undergoing an infertility evaluation: high prevalence of tetracycline resistance gene tet(M). *AMB Express*. 2017;7(1):206. doi:10.1186/s13568-017-0510-2
33. Laroucau K, Aaziz R, Meurice L, et al. Outbreak of psittacosis in a group of women exposed to Chlamydia psittaci-infected chickens. *Euro Surveill*. 2015;20(24). doi:10.2807/1560-7917.ES2015.20.24.21155.
34. Chau S, Tso EY, Leung WS, Fung KS. Three cases of atypical pneumonia caused by Chlamydia psittaci. *Hong Kong Med J*. 2015;21(3):272–275. doi:10.12809/hkmj144321
35. Mair-Jenkins J, Lamming T, Dziadosz A, et al. A psittacosis outbreak among english office workers with little or no contact with birds, August 2015. *PLoS Curr*;2018. 10. doi:10.1371/currents.outbreaks.b646c3bb2b4f0e3397183f31823bbca6
36. Spoorenberg SM, Bos WJ, van Hanne E, et al. Chlamydia psittaci: a relevant cause of community-acquired pneumonia in two Dutch hospitals. *Neth J Med*. 2016;74(2):75–81.
37. Cipriano A, Machado A, Santos FV, Abreu MA, Castro RS. [Human psittacosis: a case report]. *Acta Med Port*. 2019;32(2):161–164. Portuguese. doi:10.20344/amp.10079
38. Zhu R, Luo R, Wang X. A case of severe community-acquired pneumonia caused by Chlamydia psittaci (in chinese). *Chin J Tuberculosis Respir Dis*. 2019;42(7):548–551.
39. Shi L, Li Y. One case of severe pneumonia caused by Chlamydia psittaci. *Chin J Infect Chemother*. 2019;19(3):309–311.
40. He X, Wang Y, Tan Y. A case report of primary Sjogren's syndrome infected with Chlamydia psittaci (in chinese). *J Clin Pulm Med*. 2020;25(03):483–484.
41. Katsura D, Tsuji S, Kimura F, Tanaka T, Eguchi Y, Murakami T. Gestational psittacosis: a case report and literature review. *J Obstet Gynaecol Res*. 2020;46(5):673–677. doi:10.1111/jog.14217
42. Zhang G, Zhu L, Zhou J, et al. Treatment and nursing of a severe case of chlamydia psittaci pneumonia (in chinese). *Chin J Clin Infect Dis*. 2020;13(2):134–137.
43. Zhang H, Zhan D, Chen D, et al. Next-generation sequencing diagnosis of severe pneumonia from fulminant psittacosis with multiple organ failure: a case report and literature review. *Ann Transl Med*. 2020;8(6):401. doi:10.21037/atm.2020.03.17
44. Fernández P, Iborra MA, Simón M, Segovia M. Outbreak of Chlamydia psittaci pneumonia in the Region of Murcia. *Enfermedades infecciosas y microbiología clinica*. 2020;38(6):300–301.
45. Yu L, Wen-ting J, Yu-yan M, Qing M, Jue P, Bi-jie H. Diagnosis of 5 cases of Chlamydia psittaci pneumonia and clinical characteristics. *China Acad J Electron Publ House*. 2020;30(22):3394–3398.

## Infection and Drug Resistance

Dovepress

### Publish your work in this journal

Infection and Drug Resistance is an international, peer-reviewed open-access journal that focuses on the optimal treatment of infection (bacterial, fungal and viral) and the development and institution of preventive strategies to minimize the development and spread of resistance. The journal is specifically concerned with the epidemiology of

antibiotic resistance and the mechanisms of resistance development and diffusion in both hospitals and the community. The manuscript management system is completely online and includes a very quick and fair peer-review system, which is all easy to use. Visit <http://www.dovepress.com/testimonials.php> to read real quotes from published authors.

Submit your manuscript here: <https://www.dovepress.com/infection-and-drug-resistance-journal>