

Integrin $\alpha 5$ /ITGA5 Promotes The Proliferation, Migration, Invasion And Progression Of Oral Squamous Carcinoma By Epithelial–Mesenchymal Transition

This article was published in the following Dove Press journal:
Cancer Management and Research

Yun Deng¹
Quan Wan²
Wangxiang Yan¹

¹Department of Stomatology, First Affiliated Hospital of Sun Yat-Sen University, Guangzhou, Guangdong, People's Republic of China; ²Department of Oral and Maxillofacial Surgery, Sun Yat-Sen Memorial Hospital, Guangzhou, People's Republic of China

Background: Integrin signalling is involved in cell migration, invasion, proliferation and motility. Integrin $\alpha 5$ /ITGA5 is a subunit of Integrin and contributes to the activation of Integrin signalling. The potential role of Integrin $\alpha 5$ /ITGA5 in oral squamous cancer remains unknown. The aim of this study was to uncover the effect and mechanism of Integrin $\alpha 5$ /ITGA5 in the progression of oral squamous carcinoma.

Method: TCGA database scanning, qRT-PCR, immunohistochemistry and Western blotting assays were used to detect the expression of Integrin $\alpha 5$ /ITGA5 in tissues and cell lines. We established stable Integrin $\alpha 5$ /ITGA5 overexpressing and Integrin $\alpha 5$ /ITGA5 knockdown cell lines. We investigated the biological function and the underlying mechanism of Integrin $\alpha 5$ /ITGA5 through a series of experiments.

Results: Integrin $\alpha 5$ /ITGA5 was upregulated in cancer tissue, and its levels negatively correlated with the overall survival (OS) of patients. Integrin $\alpha 5$ /ITGA5 promoted proliferation, migration and invasion in an oral squamous carcinoma cell line by EMT (epithelial–mesenchymal transition).

Conclusion: Integrin $\alpha 5$ /ITGA5 promotes the proliferation, migration and invasion of oral squamous carcinoma.

Keywords: oral squamous carcinoma, Integrin $\alpha 5$ /ITGA5, EMT

Introduction

Oral squamous cell carcinoma (OSCC) is the most common type of cancer worldwide.¹ OSCC is associated with poor prognosis and high morbidity when diagnosed at advanced stages, and it is considered to be a very immunosuppressive cancer.² Despite advances in radiotherapy and surgical therapy, patients with late-stage OSCC still suffer from metastasis and recurrence (Sharan et al, 2017; Cohen et al, 2009).^{3,4} Several biomarkers and therapeutic targets for OSCC have been demonstrated previously and may be useful for the diagnosis and prognosis of oral cancer in the future.^{5–9} Therefore, efforts are still needed to develop effective targeted therapies for OSCC.

Integrins are a family of transmembrane receptors; they form heterodimeric complexes composed of α and β subunits.^{10–13} The 18α and 8β subunits are members of approximately 24 different Integrin receptors, each of which is capable of binding to specific ligands. They function in specific signal transduction pathways and in cell–cell

Correspondence: Wangxiang Yan
Department of Stomatology, First Affiliated Hospital of Sun Yat-Sen University, Guangzhou, Guangdong 510000, People's Republic of China
Email ywx_sysu@163.com

adhesion and the adhesion between cells and the ECM.¹⁴ Integrin signalling may be involved in proliferation, invasion and migration.¹⁵

Integrin subunit $\alpha 5$ (ITGA5) often combines with ITGB1 to form Integrin $\alpha 5\beta 1$, which serves as a receptor for cell differentiation, cell development and migration.^{16,17} The emergence of Integrin $\alpha 5\beta 1$ expression was found to be associated with tumour progression in lung cancer.¹⁸ In this study, we detected the expression levels of Integrin $\alpha 5$ /ITGA5 in tissue and cell lines by qRT-PCR, immunohistochemistry and Western blotting and uncovered its biological function through a series of experiments.

Materials And Methods

Tissue Samples

All human tissues were obtained from the surgical suite in the Department of Stomatology at the First Affiliated Hospital of Sun Yat-sen University after identification by a pathologist. Tissues were obtained with the patients' written and informed consent under a protocol approved by the institution's Institutional Review Board. A total of 105 samples were taken. All the samples were taken from tongue.

Immunohistochemistry

Immunohistochemical analysis was performed to measure the level of Integrin $\alpha 5$ /ITGA5. In brief, slides were rehydrated and blocked, and 7 slides were incubated with primary anti-Integrin $\alpha 5$ /ITGA5 (1:100 dilution, Abcam) overnight at 4°C. After washing, slides were incubated with an anti-rabbit antibody conjugated to peroxidase streptavidin. A positive signal was detected with DAB (3,3'-diaminobenzidine).

Cell Culture

The normal epithelial HaCaT cell line and the human OSCC cell lines CAL27, SCC-9 and SCC-25 were obtained from American Type Culture Collection (Manassas, VA, USA). Other cell lines were gifts from Professor Anxun Wang of the Department of Stomatology at the First Affiliated Hospital of Sun Yat-sen University approved by the First Affiliated Hospital of Sun Yat-sen University Research Committee. HaCaT and CAL27 cells were cultured in DMEM (Sigma-Aldrich, St. Louis, MO, USA) with 10% foetal bovine serum (FBS; Invitrogen, Carlsbad, CA, USA) and penicillin-streptomycin, while other cell lines were cultured in DMEM F-12 medium

containing 10% FBS at 37°C in a humidified tissue culture incubator with 5% CO₂. All the cells were HPV free.

Quantitative Real-Time PCR (qRT-PCR)

Total RNA from cells or tissues was extracted using TRIzol reagent (Thermo Fisher Scientific, Waltham, MA, USA) according to the protocol, and 2000 ng of RNA was used to obtain cDNA through reverse transcription by using PrimeScript RT Master Mix (Takara Bio, Kusatsu, Japan). Quantitative RT PCR (qRT-PCR) was conducted using SYBR Green PCR Master Mix (Takara Bio). Relative expression was determined by normalizing to the expression of GAPDH. The key primers are listed as in the following:

Gene name	Primer F	Primer R
ITGA5	AGAGCTACGGGCCA AGCTAA	TTCCCCATAAAGT TTGGTCCAC
PCNA	ACGGTACGGCCAAG CTAA	TAAAGTGGGCCAA GGCTAA
N-cadherin	CCAAAGCTCCAAGC GCT	TACGGGCCAAGCC ATAA
E-cadherin	GCCAAGCTAACCAAA GCTC	CATAAAGAGGCTAC CATAA
Vimentin	CCAAATACGGCTCAA GCTAA	TAAAGTTTGGTCCA AGCT
Snail	AAGCTAACCAAAGC TC	TGGTCCACCCAAA GCT

Western Blot Assay

Equal amounts of protein extracts were separated via 12% SDS-PAGE and transferred to a polyvinylidene fluoride membrane (Millipore, Billerica, MA, USA). After the membrane was blocked, a primary antibody (ITGA5 CST98204 PCNA CST13110 N-cad CST13116 E-cad CST14472 Vimentin CST5741 Snail CST3879 β -actin CST3700) was added for an overnight incubation at 4°C. Finally, the membrane was incubated with its respective horseradish peroxidase-conjugated secondary antibody (KPL 27856 27857) for 1 hr. The protein bands of interest were visualized using enhanced chemiluminescence reagents (Millipore, Burlington, MA, USA).

Colony Formation Assay

To measure colony formation, 2000 cells/well were seeded and incubated for 14 days to allow the formation of

colonies. The colonies were fixed using methanol and stained with 0.1% crystal violet for 10 mins. The number of colony was counted through ImageJ.

Cell Counting Kit-8 (CCK-8) Assay

The indicated cells were seeded into 96-well plates at a density of 2×10^3 cells per well. Cell viability was determined using a CCK-8 assay (Dojindo, Kumamoto, Japan) every 24 hrs and by measuring absorbance at 450 nm following the manufacturer's instructions.

Lentiviral Production And Stable Cell Line Construction

Lentiviral vectors expressing an shRNA or Integrin $\alpha 5$ /ITGA5 (biochemistry Shanghai) were co-transfected with packaging vectors psPAX2 and pMD2G (Addgene) into HEK293FT cells for lentivirus production; the transfection was performed using Lipofectamine 3000 in accordance with the manufacturer's instructions. To establish stable cell lines, cells were infected with lentiviruses as described above. After incubating for 72 hrs, cells were selected with 2 μ g/mL puromycin treatment for 3 days. shRNA-1 target sequence AACAGAAAATAAAACAGA, shRNA-2 target sequence ACGAACCTCTTCTGTGATGGA.

Trans-Well Assay

Migration and invasion were assessed using trans-well plates. For the invasion assay, 5×10^4 cells were resuspended in 250 μ L of plain medium without any FBS in the upper chamber (8- μ m pore size, Costar, Corning, NY, USA) while the lower chamber was filled with 0.75 mL of complete medium with 10% FBS. After incubating for 2 days at the incubator, the upper chamber was fixed with 100% methanol and stained with 0.1% crystal violet. For the migration assay, 5×10^4 cells were plated on chambers. The transmembrane cells were estimated under a microscope (Nikon, Tokyo, Japan) at 200 \times magnification.

Wound Healing Assay

We applied wound healing assay to detect the migration ability of cells. We seeded 1×10^5 cells per well into the 6-well plate. After, the cells meet the 100% density. Equal wound was made, after incubating for certain time. The relative width was measured through ImageJ.

Edu Assay

Transfected cells were seeded into 96-well plates at a density of 500 cells per well, After incubating for 24 hrs.

Edu was applied according to the manufactory's protocol (Raybio 251453). Images were taken from Olympus FV100 microscopy with red light of fluorescence. All images were taken in 200 \times magnification, the percentage of Edu⁺ cells were calculated by the confocal automatically.

Statistical Analysis

Statistical analyses were performed using SPSS version 18.0 (SPSS Inc., Chicago, IL, USA). Data are presented as the mean \pm SD. The chi-squared test was used to analyse clinico-pathological characteristics. Comparisons between two groups were evaluated using a Student's *t*-test. Differences among the groups were tested using a one-way ANOVA. All experiments were repeated at least three times. A P-value <0.05 was considered statistically significant.

Results

ITGA5 Is Upregulated In OSCC

We scanned the TCGA database (519 OSCC tumours and 44 normal tissues) and identified ITGA5 as one of the most dysregulated genes between the two tissue types. To verify the results, we detected the mRNA level of ITGA5 in 105 OSCC tumours and paired normal tissues from the Department of Stomatology of the First Affiliated Hospital of Sun Yat-sen University by qRT-PCR. ITGA5 was upregulated in OSCC tumours from both the TCGA database and our own database ($p < 0.001$) (Figure 1A and B). We further analysed the relationship between ITGA5 and clinical stages. Patients with an advanced stage harbour higher levels of ITGA5 than those patients at earlier stages (Figure 1C). To further confirm the results, we collected 10 paired tumour and normal tissues and used Western blotting to detect the protein levels of ITGA5. Corresponding to the mRNA level, the protein level of ITGA5 in tumours was higher than it was in normal tissues in 8 of 10 patients, as shown in Figure 1D.

ITGA5 Is Correlated With OSCC

Prognosis

We have proven that ITGA5 is upregulated in OSCC tissue. To uncover the relationship between ITGA5 and prognosis, we applied an IHC assay to detect the protein level of ITGA5 and analysed the IHC score. A representative image is shown in Figure 2A. The IHC score was higher in cancer tissue than it was in normal tissue (Figure 2B). We divided the patients into two groups. Both the TCGA

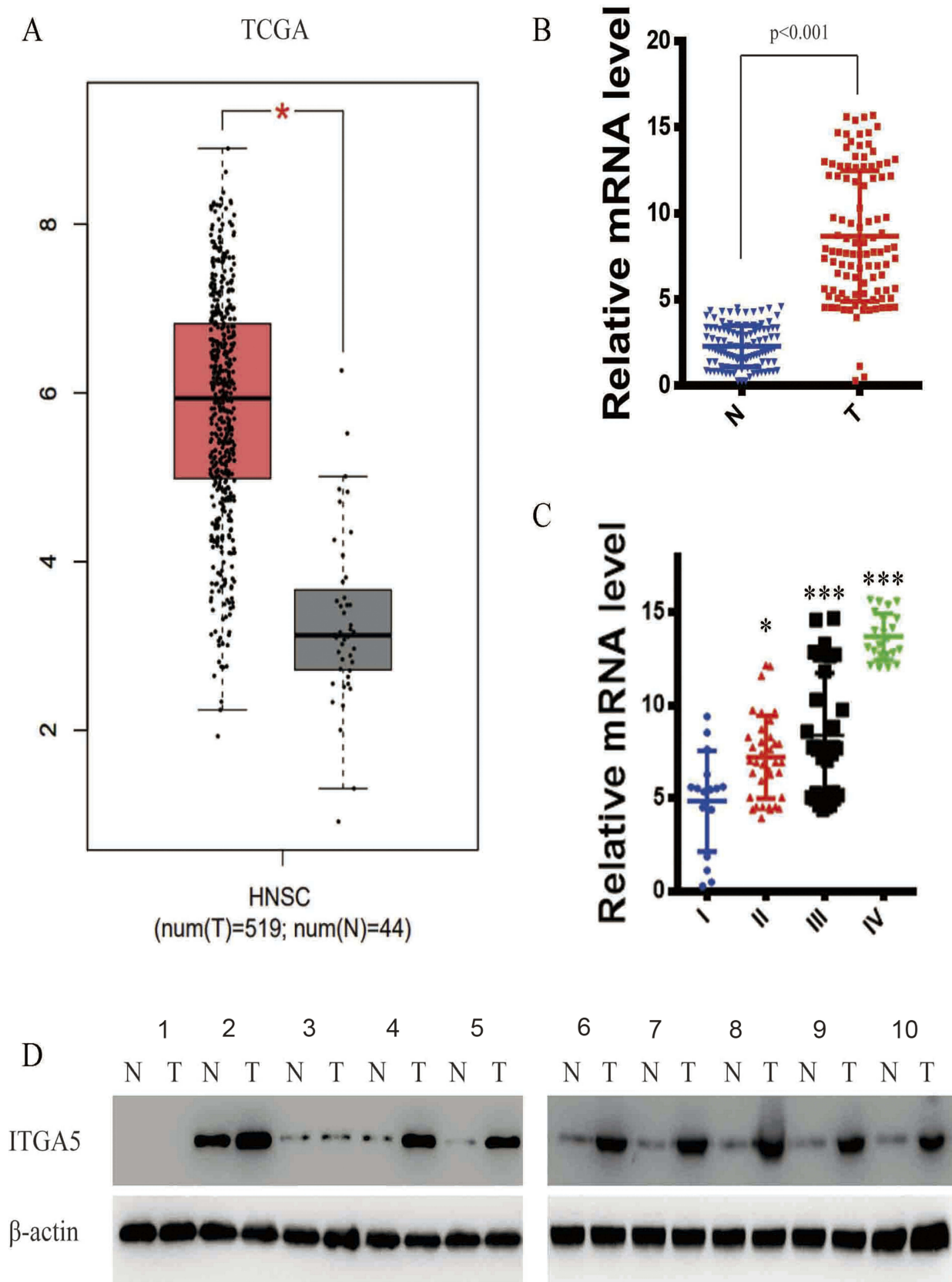


Figure 1 ITGA5 was upregulated in OSCC. **(A)** The expression difference of ITGA5 in TCGA database. **(B)** The relative mRNA level of ITGA5 of our own database. **(C)** The relative mRNA level of ITGA5 in different stages of tumour. **(D)** Western blot of ITGA5 in 12 paired OSCC and normal tissue. All the samples were taken from tongue. Stage I: sample 1.2. Stage II: sample 3.4. Stage III: sample 5.6.7. Stage IV: sample 8.9.10.*p<0.05, ***p<0.001.

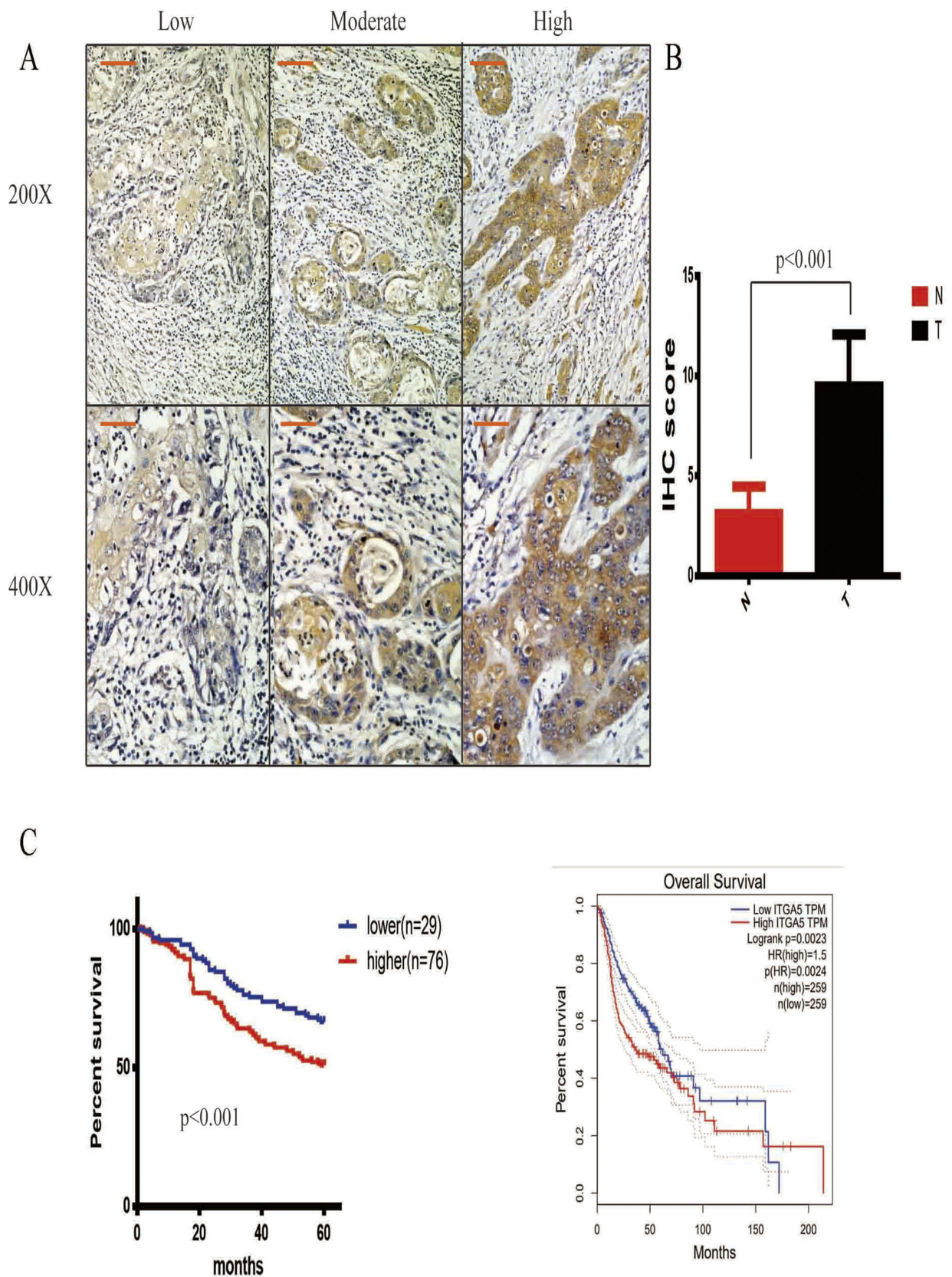


Figure 2 ITGA5 was negatively correlated with prognosis. **(A)** The representative image of IHC, 200× scale 50μm, 400× scale 200μm. **(B)** The statistical analysis of IHC score in paired OSCC and normal tissue, all the tissues were taken from tongue. **(C)** Left, the survive curve of patients of own database, all the tissues were taken from tongue. Right, the survive curve of patients of TCGA database.

database and our own database showed that patients with higher levels of ITGA5 had shorter overall survival times. Taken together, these data show that ITGA5 was negatively correlated with prognosis (Figure 2C), the characteristics of patients are shown in Table 1.

Stable Cell Lines Were Successfully Constructed

To explore the biological function of ITGA5, we detected its mRNA levels in OSCC cell lines and found that OSCC cell lines harbour higher levels of ITGA5 than normal epithelium cells. Among the OSCC cell lines, UM1 had the highest level of ITGA5, while UM2 had the lowest level of ITGA5 (Figure 3A). Using UM1 cells, we established a stable knockdown cell line, and using UM2 cells we generated stable ITGA5-overexpressing cells. The mRNA and protein levels of ITGA5 in different cell lines were detected through qRT-PCR and Western blot experiments (Figure 3B and C).

ITGA5 Promotes The Proliferation Of OSCC

To uncover the biological function of ITGA5 in OSCC, we used the CCK-8 assay, the colony formation assay and the EdU assay. The results showed that all the cells with higher levels of ITGA5 showed higher proliferation rates in both the UM1 and UM2 cell lines in the CCK-8 assay and the colony formation assay (Figure 4A–C). DZIP1-

overexpressing cells harbour a high percentage of EdU-positive cells, while DZIP1-knockdown cells harbour a low percentage of Edu-positive cells (Figure 4D and E). Taken together, these results show that DZIP1 promotes the proliferation of OSCC in both short and long time periods.

ITGA5 Promotes The Migration And Invasion Of OSCC

Recurrence and metastasis are two major factors responsible for OSCC-related death. We applied the wound healing assay, trans-well assay and invasion chamber assay to analyse the migration and invasion abilities of the cells described above. The cells with higher levels of ITGA5 migrated and invaded more easily than those with low ITGA5 levels. The wound healing assay showed greater motility of the UM1 control cells and UM2-OV cells than the other cells tested (Figure 5A and B). Cells with higher levels of ITGA5 migrate and invade more easily than other cells (Figure 5C and D).

ITGA5 Promotes The EMT Of OSCC

We have proven that ITGA5 serves as an oncogene and promotes the progression of OSCC by promoting proliferation, migration and invasion. EMT is an important process reflecting the invasive status of cancer cells. We detected EMT markers in the cell line described above. Mesenchymal markers such as N-cadherin, Vimentin and Snail were increased in cells with higher levels of ITGA5, but epithelial markers such as E-cadherin decreased at both the protein and mRNA levels, which corresponded to the former results (Figure 6A and B).

Discussion

OSCC is the most common malignancy in the Department of Stomatology, and current therapy is still surgical operation with adjuvant chemotherapy and radiotherapy. However, the overall survival time is unsatisfactory, and more biomarkers and therapeutic targets are needed.

We scanned the TCGA database and identified ITGA5 as one of the most dysregulated genes in OSCC. To verify that observation, we examined ITGA5 levels in 105 cancer tissues and paired normal tissues and assessed its correlation with prognosis. The results showed that ITGA5 was upregulated in cancer tissue and was negatively correlated with prognosis. To uncover the biological function of ITGA5 (specifically in proliferation and migration), we next measured the levels of

Table 1 The Clinical Characteristic Of Patients

Characteristics	Patients (n=105)	ITGA5 Lower (n=29)	ITGA5 Higher (n=76)	P-value
Age (years)				
<60	50	12	38	>0.05
≥60	55	17	38	
Gender				
Male	75	27	48	
Female	30	2	28	
Stage				
I+II	40	15	25	<0.01
III+IV	65	14	51	
Lymph node				
Negative	72	16	56	<0.01
Positive	33	13	20	

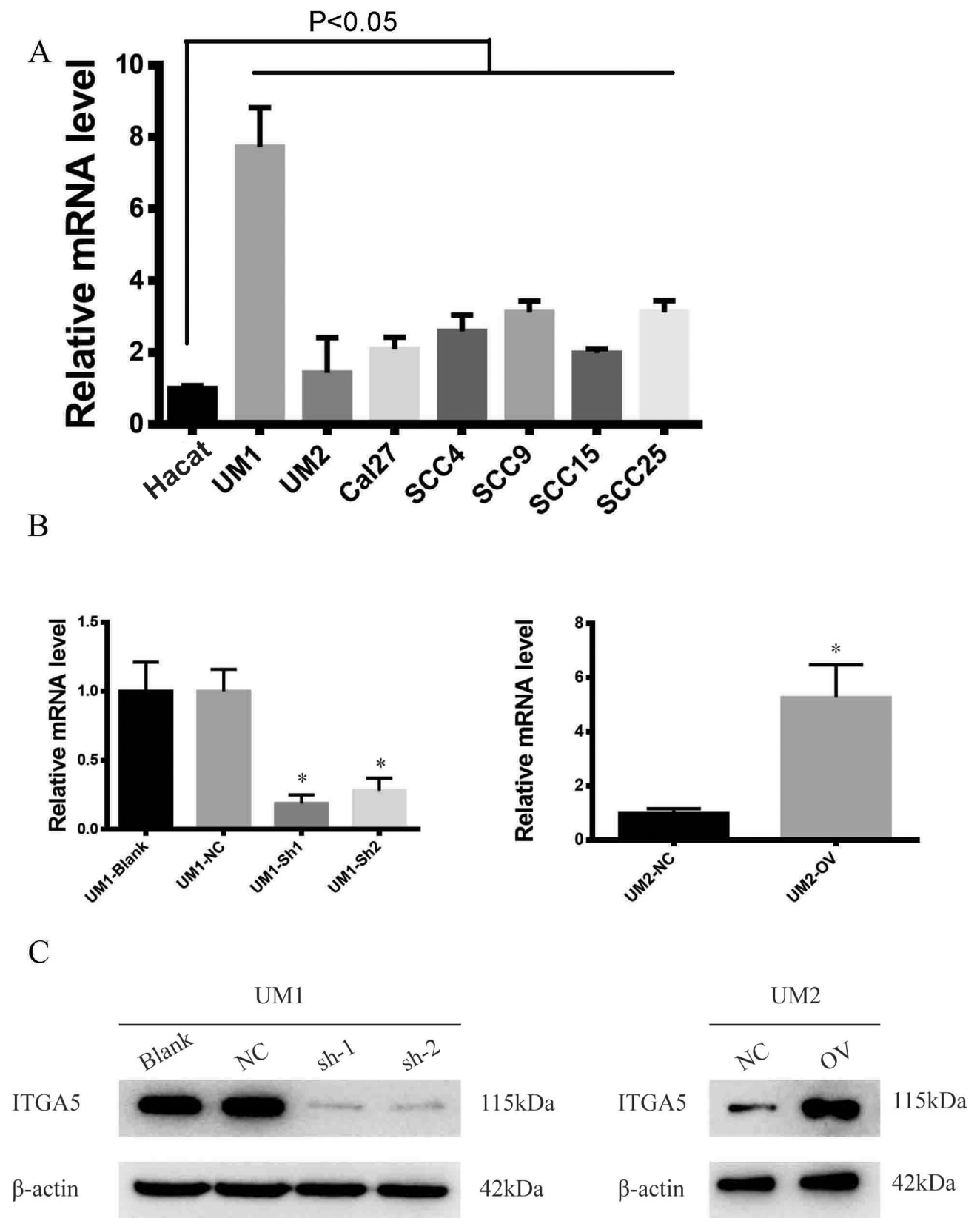


Figure 3 Stable cell line was successfully established. **(A)** The relative mRNA level of ITGA5 of different cell line. **(B)** The relative mRNA level of UM1 and UM2 cell line. **(C)** Western blot of ITGA5 in different cell line. * $p < 0.05$.

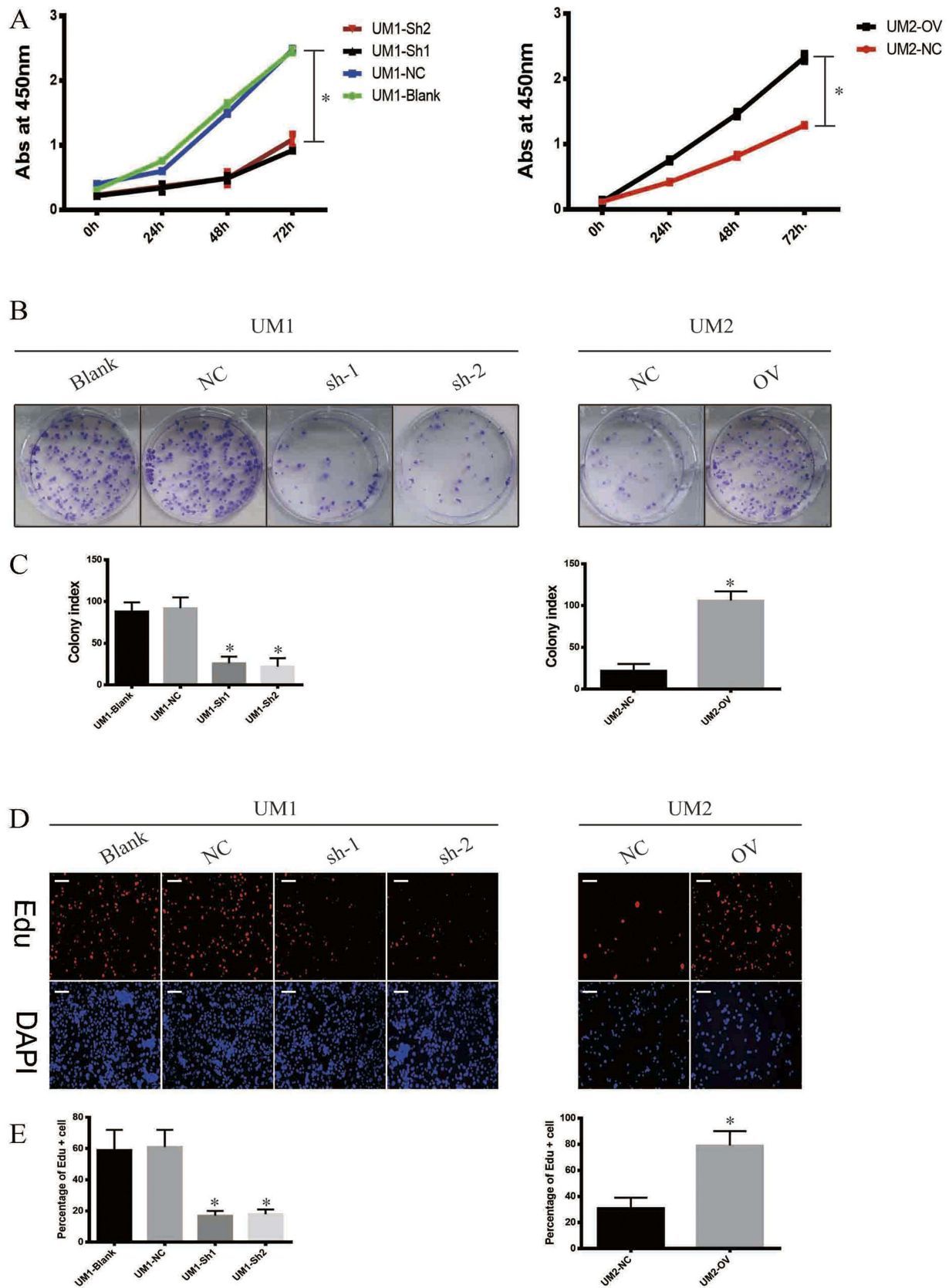


Figure 4 ITGA5 promotes the proliferation of OSCC. **(A)** The CCK-8 assay of OSCC cell line. **(B)** The colony formation assay of OSCC cell line. **(C)** The statistical analysis of colony index of OSCC cell line. **(D)** The representative image of Edu and DAPI of OSCC cell line. **(E)** The statistical analysis of percentage of Edu-positive cells of OSCC cell line. * $p < 0.05$.

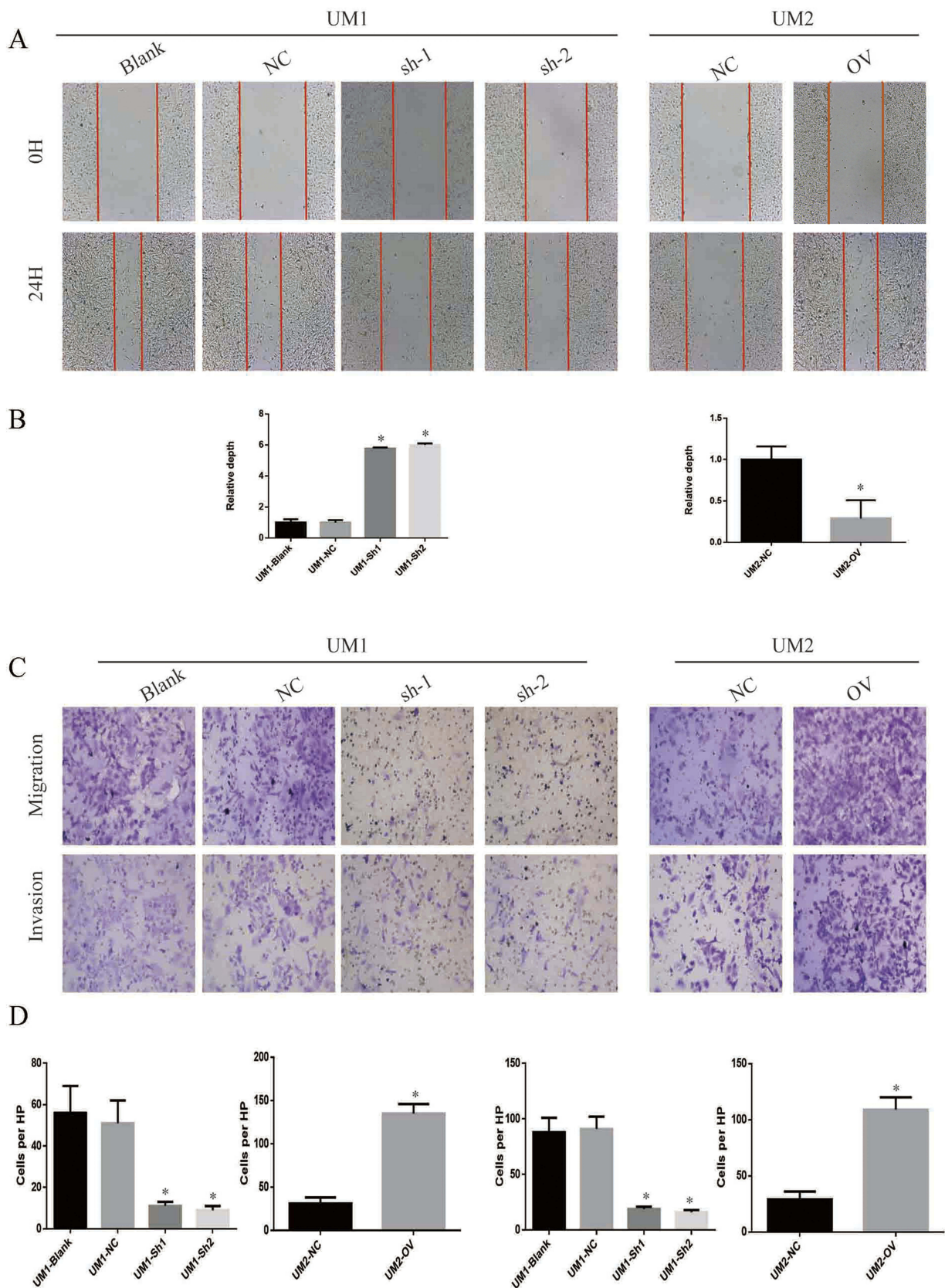


Figure 5 ITGA5 promotes the migration and invasion of OSCC. **(A)** The representative image of wound healing assay of OSCC cell line. **(B)** The statistical analysis of wound healing assay of OSCC cell line. **(C)** The representative image of trans-well assay and invasion chamber assay of OSCC cell line. **(D)** The representative image of Edu and DAPI of OSCC cell line. **(E)** The statistical analysis of percentage of Edu-positive cells of OSCC cell line. *p<0.05.

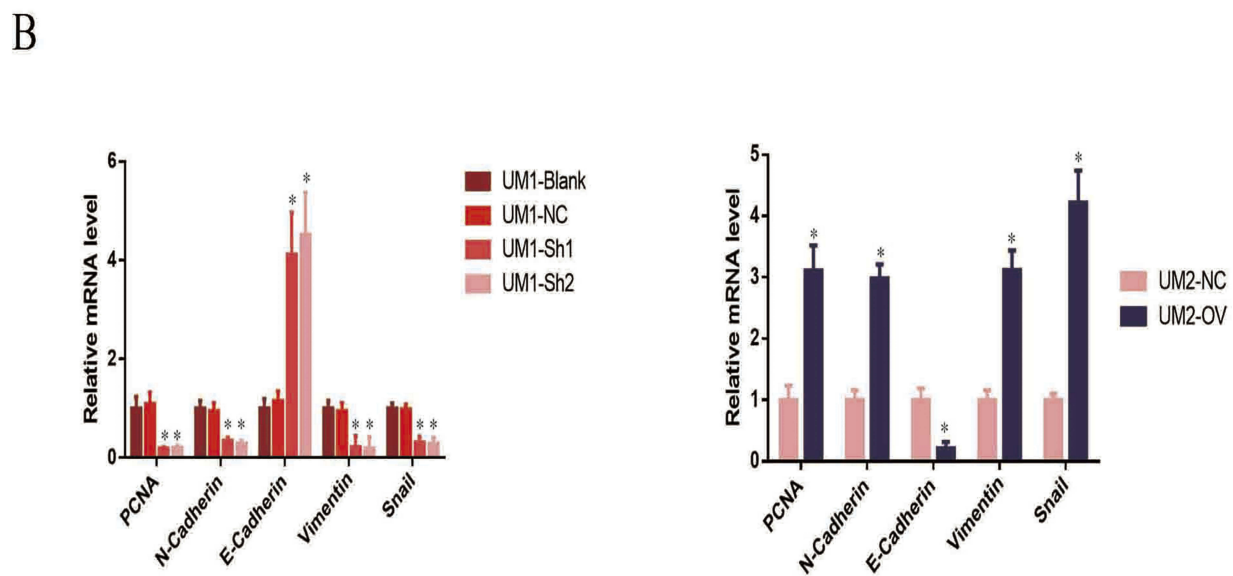
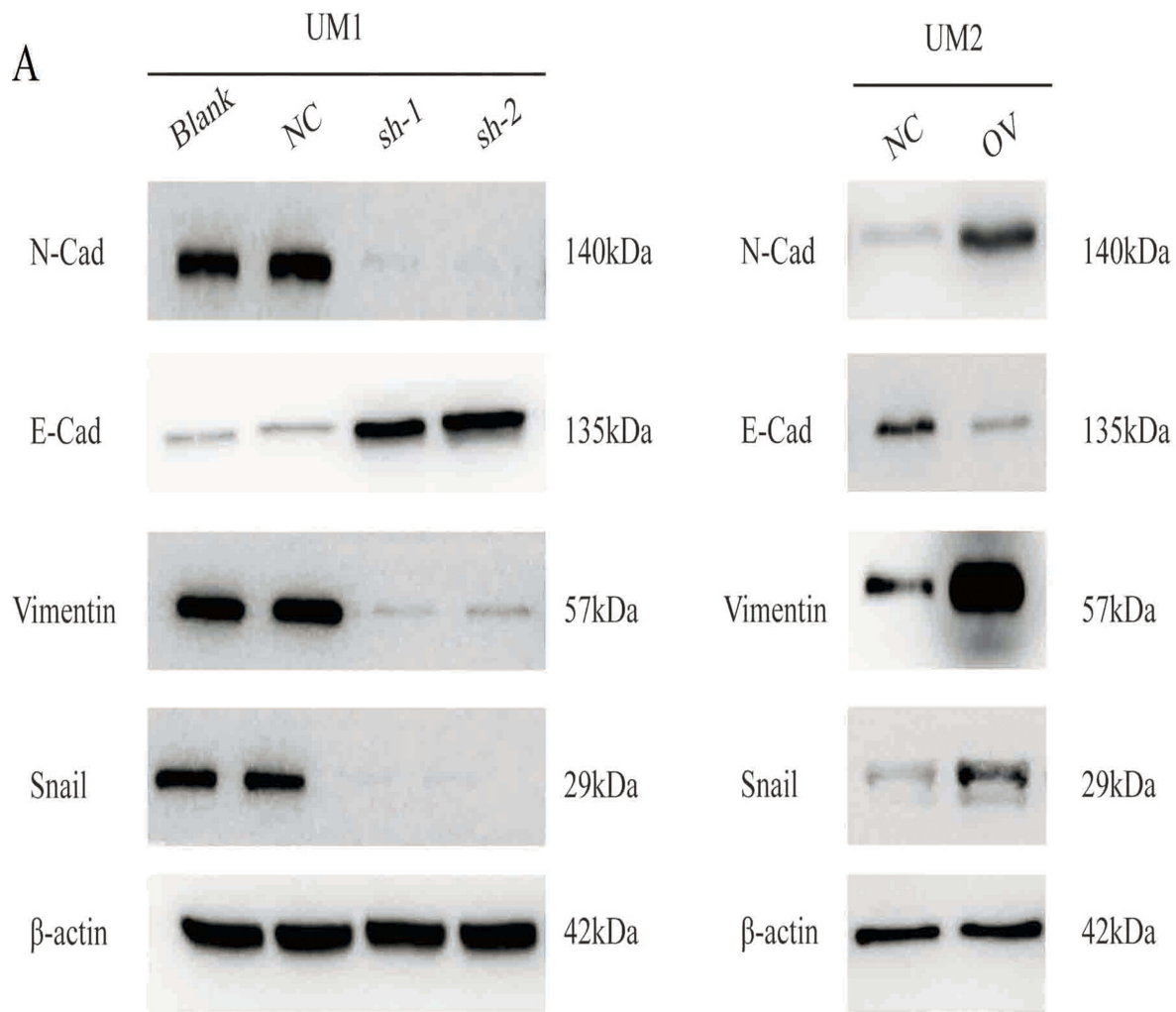


Figure 6 ITGAS promotes the EMT of OSCC. **(A)** Western blot of EMT markers of OSCC cell line. **(B)** The relative mRNA level of EMT markers of OSCC cell line. * $p < 0.05$.

ITGA5 and established stable knockdown and overexpression cell lines. The results showed that cells with higher levels of ITGA5 had higher proliferation, migration and invasion abilities compared to cells with lower ITGA5 levels. We next detected EMT markers and found that mesenchymal markers increased, while epithelial markers decreased with ITGA5 overexpression.

ITGA5 is a member of the Integrin family. Other family members, such as ITGA1/3, were reported to be upregulated in cancers and were correlated with cancer prognosis in cancers such as prostate cancer and breast cancer.^{19,20} Some research has suggested that ITGA5 is a potential biomarker in lung cancer. However, the biological function and underlying mechanisms of ITGA5 remain unclear. Integrin was reported to exert its function through various mechanisms. Wu showed that Integrin promotes invasion and metastasis via the PI3K and MAPK pathways.²¹ Integrin was able to promote the activation of the IL-1 α pathway in both autocrine and paracrine manners.²² Integrin was reported to engage in the remodelling of the extracellular matrix and cell-cell adhesion in leukaemia.²³ Studies have shown that Integrin promotes the production of reactive oxygen species (ROS), which protect cancer cells from apoptosis.²⁴ Drugs or targeting chemicals were applied for high ROS levels and were recently reported as potential therapeutic targets.²⁵ Taken together, these findings may provide insights into a potential therapeutic target in the future.

Conclusion

Integrin α 5/ITGA5 promotes the proliferation, migration and invasion of oral squamous carcinoma by promoting EMT and may be a potential biomarker in the future.

Ethical Approval

All procedures performed that involve human participants were in accordance with the ethical standards of the First Affiliated Hospital of Sun Yat-sen University Research Committee and with the 1964 Declaration of Helsinki and its later amendments or comparable ethical standards; studies were performed with the agreement of all patients.

Availability Of Data And Material

All data and material in this article are available, and the original version will be available upon demand.

Acknowledgment

We thank Professor Anxun Wang for excellent technical support.

Author Contributions

Yan designed the research. All authors contributed to data analysis, drafting or revising the article, gave approval of the version to be published, and agree to be accountable for all aspects of the work.

Funding

This study received no funding.

Disclosure

All authors declare no conflicts of interest.

References

- Adachi M, Taki T, Higashiyama M, et al. Significance of integrin α 5 gene expression as a prognostic factor in node-negative non-small cell lung cancer. *Clin Cancer Res.* 2000;6(1):96–101.
- Adams C, Johnson S. Global health and cancer. *Lancet.* 2019;393(10175):984. doi:10.1016/S0140-6736(19)30010-8
- Bromberger T, Klapproth S, Rohwedder I, et al. Direct Rap1/Talin1 interaction regulates platelet and neutrophil integrin activity in mice. *Blood.* 2018;132(26):2754–2762. (c) 2018 by The American Society of Hematology. doi:10.1182/blood-2018-04-846766.
- Chen TW, Lee CC, Liu H, et al. APOBEC3A is an oral cancer prognostic biomarker in Taiwanese carriers of an APOBEC deletion polymorphism. *Nat Commun.* 2017;8(1):465. doi:10.1038/s41467-017-00493-9
- Cohen EE, Davis DW, Karrison TG, et al. Erlotinib and bevacizumab in patients with recurrent or metastatic squamous-cell carcinoma of the head and neck: a phase I/II study. *Lancet Oncol.* 2009;10(3):247–257. doi:10.1016/S1470-2045(09)70002-6
- Cooper J, Giancotti FG. Integrin signaling in cancer: mechanotransduction, stemness, epithelial plasticity, and therapeutic resistance. *Cancer Cell.* 2019;35(3):347–367. doi:10.1016/j.ccell.2019.01.007
- Das L, Anderson, TA, Gard JM, et al. Characterization of laminin binding integrin internalization in prostate cancer cells. *J Cell Biochem.* 2017;118(5):1038–1049. doi:10.1002/jcb.25673.
- Dayan A, Fleminger G, Ashur-Fabian O. Targeting the Achilles' heel of cancer cells via integrin-mediated delivery of ROS-generating dihydro-lipoamide dehydrogenase. *Oncogene.* 2019;38:5050–5061. doi:10.1038/s41388-019-0775-9
- Ginsberg MH. Integrin activation. *BMB Rep.* 2014;47(12):655–659. doi:10.5483/BMBRep.2014.47.12.241
- Horvath J, Szabo A, Tar I, et al. Oral health may affect the performance of mRNA-based saliva biomarkers for oral squamous cell cancer. *Pathol Oncol Res.* 2018;24(4):833–842. doi:10.1007/s12253-017-0296-1
- Hsu E-C, Kulp SK, Huang H-L, et al. Integrin-linked kinase as a novel molecular switch of the IL-6-NF- κ B signaling loop in breast cancer. *Carcinogenesis.* 2016;37(4):430–442. doi:10.1093/carcin/bgw020.
- Hynes RO. Integrins: versatility, modulation, and signaling in cell adhesion. *Cell.* 1992;69(1):11–25. doi:10.1016/0092-8674(92)90115-S
- Li B-P, Mao Y-T, Wang Z, et al. CLIC1 promotes the progression of gastric cancer by regulating the MAPK/AKT pathways. *Cell Physiol Biochem.* 2018;46(3):907–924. doi:10.1159/000488822.
- Li J, Chen Z, Tian L, et al. LncRNA profile study reveals a three-lncRNA signature associated with the survival of patients with oesophageal squamous cell carcinoma. *Gut.* 2014;63(11):1700–1710. doi:10.1136/gutjnl-2013-305806.
- Moreno-Layseca P, Icha J, Hamidi H, Ivaska J. Integrin trafficking in cells and tissues. *Nat Cell Biol.* 2019;21(2):122–132. doi:10.1038/s41556-018-0223-z

16. Mostafavi-Pour Z, Ashrafi MR, Talaie-Khozani T. Down regulation of ITGA4 and ITGA5 genes after formation of 3D spherules by human Wharton's jelly stem cells (hWJSCs). *Mol Biol Rep.* 2018;45(3):245–252. doi:10.1007/s11033-018-4157-0
17. Ren JS, Kamangar F, Qiao YL, et al. Serum pepsinogens and risk of gastric and oesophageal cancers in the general population nutrition intervention trial cohort. *Gut.* 2009;58(5):636–642. doi:10.1136/gut.2008.168641
18. Rivera C, Oliveira AK, Costa RAP, De Rossi T, Paes Leme AF. Prognostic biomarkers in oral squamous cell carcinoma: a systematic review. 2017. *Oral Oncol.* 72:38–47.
19. Ross MH, Esser AK, Fox GC, et al. Bone-induced expression of integrin β 3 enables targeted nanotherapy of breast cancer metastases. *Cancer Res.* 2017;77(22):6299–6312. doi:10.1158/0008-5472.CAN-17-1225.
20. Schnittert J, Bansal R, Storm G, Prakash J. Integrins in wound healing, fibrosis and tumor stroma: high potential targets for therapeutics and drug delivery. *Adv Drug Deliv Rev.* 2018;129:37–53. doi:10.1016/j.addr.2018.01.020
21. Sharan SS, Kumar R, Singh KV, et al. Expression of radioresistant gene PEG10 in OSCC patients and its prognostic significance. *Asian Pac J Cancer Prev.* 2017;6:1513–1518. Creative Commons Attribution License.
22. Sun Z, Costell M, Fassler R. Integrin activation by talin, kindlin and mechanical forces. *Nat Cell Biol.* 2019;21(1):25–31. doi:10.1038/s41556-018-0234-9
23. Varkas G, Elewaut D. Response to: 'Simultaneous inhibition of α 4/ β 7 integrin and tumor necrosis factor- α in concomitant spondyloarthritis and inflammatory bowel disease' by Richard et al. *Ann Rheum Dis.* 2018;77(12):e87. doi:10.1136/annrheumdis-2017-212858
24. Yazlovitskaya EM, Viquez OM, Tu T, et al. The laminin binding alpha3 and alpha6 integrins cooperate to promote epithelial cell adhesion and growth. *Matrix Biol.* 2018;77:101–116.
25. Zhao F, Qiao Y. Cervical cancer prevention in China: a key to cancer control. *Lancet.* 2019;393(10175):969–970. doi:10.1016/S0140-6736(18)32849-6

Cancer Management and Research

Dovepress

Publish your work in this journal

Cancer Management and Research is an international, peer-reviewed open access journal focusing on cancer research and the optimal use of preventative and integrated treatment interventions to achieve improved outcomes, enhanced survival and quality of life for the cancer patient.

The manuscript management system is completely online and includes a very quick and fair peer-review system, which is all easy to use. Visit <http://www.dovepress.com/testimonials.php> to read real quotes from published authors.

Submit your manuscript here: <https://www.dovepress.com/cancer-management-and-research-journal>