

Treatment selection bias for chemotherapy persists in colorectal cancer patient cohort studies even in comprehensive propensity score analyses

This article was published in the following Dove Press journal:
Clinical Epidemiology

Daniel Boakye ^{1,2}
Viola Walter¹
Uwe M Martens ³
Jenny Chang-Claude⁴
Michael Hoffmeister¹
Lina Jansen ^{1,*}
Hermann Brenner^{1,5,6,*}

¹Division of Clinical Epidemiology and Aging Research, German Cancer Research Center (DKFZ), Heidelberg, Germany; ²Medical Faculty Heidelberg, Heidelberg University, Heidelberg, Germany; ³SLK-Clinics, Cancer Center Heilbronn-Franken, Heilbronn, Germany; ⁴Unit of Genetic Epidemiology, Division of Cancer Epidemiology, German Cancer Research Center (DKFZ), Heidelberg, Germany; ⁵Division of Preventive Oncology, German Cancer Research Center (DKFZ) and National Center for Tumor Diseases (NCT), Heidelberg, Germany; ⁶German Cancer Consortium (DKTK), German Cancer Research Center (DKFZ), Heidelberg, Germany

*These authors contributed equally to this work

Introduction: Propensity score methods are increasingly used to address confounding related to treatment selection in observational studies. Studies estimating the effect of chemotherapy in colon cancer (CC) patients, however, often lacked information on pertinent comorbidities and functional status (FS). We assessed to what extent comorbidities and FS impact treatment decisions in colorectal cancer patients and explain the benefit of chemotherapy in stage III CC patients.

Methods: Stage II-III colorectal cancer patients diagnosed in 2003–2014 and recruited into a population-based study were included (N=1102). Associations of comorbidity and FS with treatment patterns were examined with multivariable logistic regression. The contribution of lower comorbidity and higher FS to the benefit of chemotherapy was estimated with propensity score weighted Cox models in 430 stage III CC patients who were followed over a median time of 4.7 years.

Results: In stage II (high-risk) and III CC patients, Charlson comorbidity scores 1, 2 and 3+ were associated with 57%, 66% and 70% lower odds of chemotherapy use, respectively. In combination with older age and poor FS, comorbidity was associated with 97% and 83% decreased odds of adjuvant chemotherapy use in CC and rectal cancer patients, respectively. In stage III CC patients, lower comorbidity and higher FS explained 38% and 24% of the overall and disease-specific survival benefits of chemotherapy, respectively. Selection bias was observed even in the comprehensive models, as chemotherapy was still associated with substantially higher non-disease-specific survival (hazard ratio (HR): 0.66; 95% confidence interval (CI): 0.46–0.92), especially in patients <75 years (HR: 0.33; 95% CI: 0.17–0.63).

Conclusion: Lower comorbidity and higher FS of recipients of chemotherapy explain approximately 40% of the benefits of chemotherapy in stage III CC patients. Regardless of how comprehensive propensity score analyses might be in observational studies, treatment selection bias might persist and affect estimates of treatment effects.

Keywords: comorbidity, functional status, treatment selection bias, chemotherapy, survival, colorectal neoplasm

Correspondence: Hermann Brenner
Division of Clinical Epidemiology and Aging Research, German Cancer Research Center (DKFZ), Im Neuenheimer Feld 581, Heidelberg 69120, Germany
Tel +49 622 142 1300
Fax +49 622 142 1302
Email h.brenner@dkfz.de

Background

Colorectal cancer (CRC) is mostly diagnosed at older age, when comorbidities are common.¹ In many countries, the standard treatment for high-risk stage II and stage III colon cancer (CC) is surgery followed by adjuvant chemotherapy^{2,3} and for stage II-III rectal cancer (RC) is preoperative chemoradiotherapy and surgery followed by

postoperative chemo(radio)therapy.^{3,4} Multiple studies have suggested underuse of chemotherapy in comorbid CC patients.^{5–14} However, previous studies mostly focused on CC patients, and evidence on comorbidity and neoadjuvant chemoradiotherapy in RC patients is sparse. Furthermore, many of the prior studies referred to patients diagnosed in 1995–2003,^{5–9,14} but chemotherapeutic compounds have evolved¹⁵ and comorbidity profiles might have changed since then, asking for timely assessment of the extent to which comorbidities influence the current regimens of CRC care.

Data from randomized clinical trials (RCTs)¹⁶ have shown that chemotherapy is associated with 24% reduction in all-cause mortality in stage III CC patients. However, patients enrolled in RCTs are often younger, have fewer comorbidities and are more functionally fit than the general population. Multiple population-based studies^{17–22} have demonstrated substantial benefits of chemotherapy in stage III CC patients, with estimates for reduction in all-cause mortality ranging from 24% to 52%.^{17–19,22} Most of these studies, however, lacked detailed information on comorbidities and had no information on functional status (FS). Hence, to what extent imperfectly ascertained comorbidity status or unmeasured FS impacts the benefit of chemotherapy in routine practice is unknown.

Propensity score (PS) methods are increasingly used to address confounding related to treatment selection bias,²³ but their potential to correct for selection bias strongly depends on the comprehensiveness of the information used for matching/weighting. We hypothesized that if PS analyses completely account for treatment selection, then the benefit of chemotherapy for mortality from causes other than CC should be lower than for CC mortality, as there is no evidence to date that chemotherapy prevents such incidents.

In this population-based study, we aimed to investigate (i) the association of comorbidity (separately and jointly with FS) with treatment patterns in stage II–III CC and RC patients, (ii) to what extent lower comorbidity and higher FS explain the benefit of chemotherapy in stage III CC patients, and (iii) whether selection bias persists in treatment effects' estimates from PS analyses.

Methods

Study population

This study used data on 1102 CRC patients diagnosed in 2003–2014 and recruited into the DACHS (Darmkrebs: Chancen der Verhütung durch Screening) study, a

population-based case-control study with additional regular follow-up of cases conducted in the Rhine-Neckar region of Germany. Patients with first time diagnosis of CRC (International Classification of Diseases, 10th Revision (ICD-10), codes C18–C20) and aged ≥ 30 years were eligible. Patients were recruited from all 22 hospitals providing first-line treatment of CRC in the study region. Further details of the DACHS study have been described elsewhere.^{24,25} The DACHS study was approved by the ethics committees of the Medical Faculty of Heidelberg University and the state medical boards of Baden-Wuerttemberg and Rhineland-Palatinate. All participants gave written informed consent.

At baseline, trained interviewers conducted interviews with the participants to collect information on lifestyle factors and medical history, including comorbidities, using a standardized questionnaire. Around three years after diagnosis, detailed information on CRC treatments was collected from medical reports and from a physician administered questionnaire (physicians extracted information on patients' treatments saved on computer systems). Follow-up started from CRC diagnosis and vital status and cause of death were ascertained from population registries.

Ascertainment of comorbidities and functional status

Comorbidities that were diagnosed either before or at the time of CRC diagnosis were ascertained from medical reports, using ICD-10 codes ([Table S1](#)). To ensure comparability with previous studies, we used the Charlson comorbidity index (CCI)²⁶ to compute an overall comorbidity score. We grouped patients into four groups, namely CCI score 0 (no comorbidity), 1, 2 and 3+ (severe comorbidity). Perioperative assessment of FS varied between hospitals and within hospitals over time. The most commonly employed scales were American Society of Anesthesiologists' (ASA) grade,²⁷ Eastern Cooperative Oncology Group (ECOG) score²⁸ and Karnofsky Performance Score (KPS).²⁹ ASA is a 5-grade (I–V) scale, with higher grades indicating poor FS.²⁷ ECOG assesses FS on a 6-point scale (0–5), with higher scores indicating worse FS.²⁸ KPS rates FS on a scale of 0–100; a score of 100 indicates optimal health.²⁹ We adapted the ESMO criteria for comparing ECOG and KPS scores and used the distribution of ASA grades to classify patients into three groups – excellent (ASA=I, ECOG=0 or KPS=90–100), fair (ASA=II, ECOG=1 or KPS=70–80) and poor FS (ASA=III–IV, ECOG=2–4 or KPS=10–60).^{28,30}

Inclusion criteria

Our analytic sample comprised all radically resected high-risk stage II and stage III CC and stage II-III RC patients who were recruited in hospitals that reported FS data for at least 75% of the patients in a year (Figure S1). We defined high-risk stage II CC as the presence of T4 stage (all years of diagnosis) and with <12 examined lymph nodes (patients diagnosed in ≥ 2008). Further criteria such as presence of bowel obstruction or perforation could not be considered. The survival analyses were, however, restricted to stage III CC patients only.

Statistical analysis

The distribution of patients with CCI=1+ according to baseline characteristics was assessed in the whole sample. In CC patients, we investigated the association of comorbidity with adjuvant chemotherapy administration (yes/no) using multivariable logistic regression. In RC patients, we examined the association of comorbidity with neoadjuvant chemoradiotherapy and adjuvant chemotherapy (yes/no). The joint association of comorbidity, FS and age with treatment patterns was moreover investigated, and potential interaction of comorbidity with age or FS was examined, by adding interaction terms to the models.

Lastly, we estimated to what extent lower comorbidity and higher FS explain the apparent benefit of chemotherapy and whether treatment selection bias persists in estimates for treatment effects in stage III CC patients. Here, the association of chemotherapy with overall (OS; mortality from any cause), disease-specific (DSS; mortality from CC) and non-disease-specific survival (nDSS; mortality from causes other than CC) were estimated using Cox proportional-hazards regression. Time was calculated from CC surgery to the respective endpoints or end of follow-up, whichever occurred first. We assessed the proportional hazards assumption by adding time-dependent interaction terms to the model and checking whether their effects were significant. Time-dependent interaction terms (with age, body mass index [BMI] and CCI scores) were retained in the model in case of violation of the assumption.

To address confounding related to selection bias, we calculated PS²³ for chemotherapy from three separate logistic regression models: (i) sex, age, year of diagnosis, education level, smoking status, BMI, lifetime physical activity and alcohol consumption, T-stage, N-stage, grade, number of examined lymph nodes, surgical

technique and surgical volume; (ii) additional inclusion of CCI scores (here, patient-reported comorbidities that were not captured in the medical reports were included); and (iii) further inclusion of FS. The degree of overlap of the distributions of PS between the treatment groups was assessed. Because of our relatively small sample size, we used the inverse probability of treatment weighting to balance PS in our analyses, as appropriate.³¹

Sensitivity analysis

To assess the robustness of our estimates for treatment effects, we truncated weights at the 99th and 95th percentiles, by setting them as the threshold.³² Results from the truncated models were then compared to those from the main and PS adjusted models. We also used the Mantel-Byar method³³ to account for immortal time bias, by using time-dependent exposure definition whereby the time from surgery to chemotherapy initiation was defined as “no chemotherapy” in the Cox models. Moreover, we used the Fine and Gray model³⁴ to account for non-CC mortality (a competing event for DSS) and CC mortality (a competing event for nDSS). All analyses were conducted with SAS software, version 9.4 (SAS Institute, Cary, NC), with $\alpha=0.05$.

Results

Of 4916 CRC patients diagnosed in 2003–2014, those recruited in hospitals that reported <75% FS data for participants and those with stage I and IV tumors, non-R0 resection and with missing data on any covariate of interest were excluded (Figure S1). A total of 523 stage II (high-risk) and III CC and 579 stage II-III RC patients were included in the treatment pattern analyses.

The median age was 70 years. Nearly half of the patients had CCI=1+ (47%; Table S1). The two most common comorbidities were various cardiovascular diseases (overall=20%) and diabetes (19%). Comorbidities were particularly common in men, older, less educated, underweight and overweight/obese patients, former smokers, patients with functional impairment and those recruited in low surgical volume hospitals (Table 1). Adjuvant chemotherapy was administered to 68% of the CC patients. Among the RC patients, 36% received neoadjuvant chemoradiotherapy and 58% received adjuvant chemo(radio)therapy. A total of 430 stage III CC patients were included in the survival analysis. During a median follow-up of 4.7 years, 158 (37%) deaths occurred, of which 89 (56%) were due to CC.

Table I Distribution of frequency of patients with at least one comorbid condition

Patient & tumor characteristics	Total		CCI I+		p
	N=1102		n=517		
	N	col %	n	row %	
Sex					
Women	414	37.6	174	42.0	0.013 ^d
Men	688	62.4	343	49.9	
Age at diagnosis (years)					
30–59	240	21.8	59	24.6	<0.001 ^e
60–69	295	26.8	117	39.7	
70–79	373	33.8	212	56.8	
≥80	194	17.6	129	66.5	
Years of school education					
<9	740	67.2	389	52.6	<0.001 ^e
9–10	193	17.5	70	36.3	
>10	169	15.3	58	34.3	
Body mass index (kg/m ²) ^a					
<18.5	23	2.1	11	47.8	0.005 ^f
18.5–24.9	427	39.2	175	41.0	
25–29.9	441	40.5	210	47.6	
≥30	198	18.2	111	56.1	
Smoking status ^b					
Never smoker	471	42.9	201	42.7	0.008 ^f
Former smoker	456	41.6	239	52.4	
Current smoker	170	15.5	74	43.5	
Lifetime alcohol consumption (g of ethanol/day) ^c					
None	204	18.6	112	54.9	<0.001 ^f
T1 (0.1–6.8)	287	26.1	115	40.1	
T2 (6.9–20.6)	292	26.6	121	41.4	
T3 (20.7–151.3)	316	28.7	166	52.5	
Functional status					
Excellent	301	27.3	103	34.2	<0.001 ^e
Fair	429	38.9	167	38.9	
Poor	372	33.8	247	66.4	
Year of diagnosis					
2003–2007	204	18.5	92	45.1	0.198 ^e
2008–2011	463	42.0	209	45.2	
2012–2014	435	39.5	216	49.7	
Tumor location					
Colon	523	47.5	252	48.2	0.433 ^d
Rectum	579	52.5	265	45.8	
Tumor stage, UICC					
II	294	26.7	152	51.7	0.056 ^d
III	808	73.3	365	45.2	
Surgical technique					
Laparoscopy	141	12.8	57	40.4	0.104 ^d
Open	961	87.2	460	47.9	

(Continued)

Table 1 (Continued).

Patient & tumor characteristics	Total		CCI 1+		p
	N=1102		n=517		
	N	col %	n	row %	
Surgical volume ^g					
Low (<70)	249	22.6	135	54.2	0.014 ^e
Medium (70–149)	273	24.8	125	45.8	
High (150+)	580	52.6	257	44.3	
CCI scores					
0	585	53.1			
1	215	19.5			
2	156	14.2			
3+	146	13.2			

Notes: Missing: a=13, b=5, c=3 (were excluded from the survival analyses). ^dp-values from Fisher's exact test. ^ep-values from Cochran-Armitage trend test. ^fp-values from Chi-square test of independence. ^gNumber of colorectal cancer surgeries per year.

Abbreviations: CCI, Charlson comorbidity index score; g, Gram; T, Tertile; UICC, International Union against Cancer.

Comorbidity and treatment patterns

In CC patients (Table 2), chemotherapy use was 83% in non-comorbid patients and 43% in severely comorbid patients. After adjusting for multiple covariates including FS, CCI scores 1, 2 and 3+ were associated with 57%, 64% and 70% lower odds of chemotherapy receipt. In RC patients, neoadjuvant chemoradiotherapy use was 42% in non-comorbid patients and 26% in patients with CCI=3+. Administration of adjuvant chemotherapy was also lower in severely comorbid (34%) than in non-comorbid (65%) patients (odds ratio [OR]: 0.51; 95% confidence interval [CI]: 0.26–0.98). No significant interaction with tumor stage was observed (Table S2). In CC patients, heart failure, peripheral vascular disease, stroke, chronic obstructive pulmonary disease, renal disease, diabetes and other cancers were significantly associated with less frequent chemotherapy administration (Table 3). Among RC patients, peripheral vascular disease and other cancers were associated with not receiving neoadjuvant chemoradiotherapy, and heart failure with not receiving adjuvant chemotherapy.

Joint effect of comorbidity and functional status

In CC patients without comorbidities and functional impairment, chemotherapy use was 94% in younger (<70) and 81% in older patients (70+ years; Table 4). The presence of comorbidities and functional impairment reduced chemotherapy use to 75% in younger and 35% in older patients. In younger and older patients with functional impairment,

comorbidity was associated with 86% and 97% lower odds of receiving chemotherapy, respectively. In RC patients with functional impairment, comorbidity was not associated with treatments in younger patients, but was associated with 62% and 83% decreased odds of neoadjuvant chemoradiotherapy and adjuvant chemotherapy use in older patients, respectively. Significant interactions between comorbidity and age ($p_{\text{interaction}}=0.027$) and FS ($p_{\text{interaction}}=0.001$) for adjuvant treatments were observed in RC but not in CC.

Association of chemotherapy with survival outcomes

Figure 1 and Table 5 show adjusted survival curves and hazard ratios (HRs) for chemotherapy and survival outcomes in stage III CC patients, respectively. Without comorbidity and FS in the PS models, chemotherapy was associated with 47% and 38% improved OS and DSS, respectively (Table 5). Approximately 38% and 24% of the benefits of chemotherapy for OS and DSS, respectively, were explained by lower comorbidity and higher FS. In the comprehensive models, chemotherapy was associated with improved OS (HR=0.73; 95% CI=0.58–0.92) and non-significantly improved DSS (HR=0.77; 95% CI=0.56–1.06). Selection bias was observed, as chemotherapy was associated with substantially improved nDSS (HR=0.66; 95% CI=0.46–0.92) than DSS, especially in patients <75 years (HR=0.33; 95% CI=0.17–0.63; $p_{\text{interaction}}=0.004$). The benefits of chemotherapy were substantially overestimated in all the conventional covariate adjustment models. No

Table 2 Association of comorbidity scores with administration of neoadjuvant and adjuvant treatments in colon and rectal cancer patients

	N	n	row (%)	Yes vs No	
				OR ^a (95% CI)	OR ^b (95% CI)
Stage II (high-risk) and III colon cancer (N=523)					
Adjuvant chemotherapy					
CCI 0	271	226	83.4	1.00	1.00
CCI 1	107	62	57.9	0.36 (0.19–0.68)	0.43 (0.22–0.84)
CCI 2	73	37	50.7	0.29 (0.14–0.59)	0.34 (0.16–0.72)
CCI 3+	72	31	43.1	0.23 (0.11–0.47)	0.30 (0.14–0.64)
				<i>p</i> _{Trend} <0.001	<i>p</i> _{Trend} =0.001
Stage II and III rectal cancer (N=579)					
Neoadjuvant chemoradiotherapy					
CCI 0	314	133	42.4	1.00	1.00
CCI 1	108	36	33.3	0.51 (0.27–0.96)	0.40 (0.19–0.84)
CCI 2	83	23	27.7	0.58 (0.31–1.13)	0.57 (0.26–1.26)
CCI 3+	74	19	25.7	0.78 (0.38–1.59)	0.80 (0.33–1.93)
				<i>p</i> _{Trend} =0.233	<i>p</i> _{Trend} =0.546
Adjuvant chemo (radio)therapy					
CCI 0	314	204	65.0	1.00	1.00
CCI 1	108	57	52.8	0.79 (0.46–1.33)	0.81 (0.47–1.39)
CCI 2	83	52	62.7	1.18 (0.64–2.16)	1.23 (0.66–2.30)
CCI 3+	74	25	33.8	0.44 (0.23–0.85)	0.51 (0.26–0.98)
				<i>p</i> _{Trend} =0.029	<i>p</i> _{Trend} =0.082

Notes: ^aAdjusted for age, sex, years of school education, having a partner, year of diagnosis, stage, tumor grade, number of lymph nodes examined, surgical technique and surgical volume. ^bAdditional adjustment for functional status and time of functional status assessment. Statistically significant results are highlighted in bold.

Abbreviations: n, number of patients who received treatment; OR, Odds ratio; CI, Confidence interval; CCI, Charlson comorbidity index.

Table 3 Association of individual comorbidities with treatment patterns

Comorbidities	Colon cancer		Rectal cancer			
	Adjuvant chemotherapy		Neoadjuvant chemoradiotherapy		Adjuvant chemo (radio)therapy	
	n row (%) [‡]	(Yes vs No)	n row (%) [‡]	(Yes vs No)	n row (%) [‡]	OR* (95% CI)
		OR* (95% CI)		OR* (95% CI)		
No comorbid condition [†]	226 (83.4)	Ref	133 (42.4)	Ref	204 (65.0)	Ref
Myocardial infarction	21 (46.7)	0.52 (0.21–1.24)	10 (24.4)	0.43 (0.14–1.35)	23 (56.1)	1.42 (0.58–3.49)
Heart failure	5 (26.3)	0.21 (0.06–0.68)	4 (14.3)	0.23 (0.05–1.11)	7 (25.0)	0.29 (0.10–0.87)
PVD	12 (33.3)	0.13 (0.21–0.79)	12 (26.1)	0.27 (0.10–0.74)	17 (37.0)	0.59 (0.26–1.32)
Stroke	15 (45.5)	0.38 (0.15–0.97)	10 (34.5)	0.39 (0.11–1.31)	8 (27.6)	0.40 (0.15–1.07)
COPD	22 (51.2)	0.28 (0.12–0.65)	9 (24.3)	0.37 (0.13–1.07)	13 (35.1)	0.57 (0.25–1.30)
Renal disease	14 (32.3)	0.18 (0.07–0.48)	14 (37.8)	2.47 (0.81–7.54)	19 (51.4)	2.49 (0.94–6.62)
Mild liver disease	19 (65.5)	0.81 (0.30–2.24)	11 (33.3)	0.47 (0.16–1.39)	19 (57.6)	1.25 (0.48–3.23)
Diabetes	53 (51.5)	0.41 (0.22–0.78)	32 (31.4)	0.63 (0.30–1.33)	49 (48.0)	1.29 (0.67–2.43)
Non-colorectal cancer	23 (53.5)	0.44 (0.20–1.00)	13 (21.3)	0.34 (0.13–0.85)	26 (42.6)	0.81 (0.40–1.61)

Notes: [†]Number (proportion) of patients with a specific comorbid condition who received treatment. [‡]Patients with none of the comorbid conditions in the Charlson comorbidity index. *Adjusted for age, sex, educational level, having a partner, year of diagnosis, tumor stage, number of lymph nodes examined, surgical volume, surgical technique, comorbidity score, functional status and functional status assessment time (backward elimination of covariates with *p*>0.5; age, sex, stage, comorbidity score and functional status were forced into the model). Statistically significant results are highlighted in bold.

Abbreviations: OR, Odds ratio; CI, Confidence interval; PVD, Peripheral vascular disease; COPD, Chronic obstructive pulmonary disease.

Table 4 Association of comorbidity with treatment patterns according to age and functional status

Age	FS	CCI	Received (%)	Crude	Adjusted
				OR (95% CI)	OR [†] (95% CI)
Colon cancer (stage II* & III)					
Adjuvant chemotherapy					
<70	Good	0	114 (94.2)	1.00	1.00
<70	Good	≥1	37 (88.1)	0.45 (0.14–1.52)	0.41 (0.11–1.49)
<70	Poor	0	29 (80.6)	0.25 (0.08–0.78)	0.37 (0.11–1.30)
<70	Poor	≥1	24 (75.0)	0.18 (0.06–0.56)	0.14 (0.04–0.48)
≥70	Good	0	52 (81.3)	0.27 (0.10–0.72)	0.24 (0.08–0.69)
≥70	Good	≥1	23 (50.0)	0.06 (0.02–0.16)	0.05 (0.02–0.14)
≥70	Poor	0	31 (62.0)	0.10 (0.04–0.26)	0.07 (0.02–0.19)
≥70	Poor	≥1	46 (34.9)	0.03 (0.01–0.08)	0.03 (0.01–0.07)
Rectal cancer (stage II & III)					
Neoadjuvant chemoradiotherapy					
<70	Good	0	76 (44.2)	1.00	1.00
<70	Good	≥1	24 (34.3)	0.66 (0.37–1.18)	0.46 (0.21–1.03)
<70	Poor	0	15 (50.0)	1.26 (0.58–2.75)	1.51 (0.60–3.78)
<70	Poor	≥1	11 (34.4)	0.66 (0.30–1.46)	0.98 (0.39–2.50)
≥70	Good	0	29 (43.3)	0.96 (0.55–1.70)	0.97 (0.49–1.92)
≥70	Good	≥1	20 (44.4)	1.01 (0.52–1.96)	1.22 (0.54–2.74)
≥70	Poor	0	13 (28.9)	0.51 (0.25–1.05)	0.89 (0.38–2.09)
≥70	Poor	≥1	23 (19.5)	0.31 (0.18–0.53)	0.38 (0.19–0.76)
Adjuvant chemotherapy ^a					
<70	Good	0	125 (72.7)	1.00	1.00
<70	Good	≥1	50 (71.4)	0.94 (0.51–1.74)	0.97 (0.49–1.92)
<70	Poor	0	19 (63.3)	0.65 (0.29–1.47)	0.43 (0.17–1.08)
<70	Poor	≥1	22 (68.8)	0.83 (0.37–1.88)	0.74 (0.29–1.86)
≥70	Good	0	35 (52.2)	0.41 (0.23–0.74)	0.39 (0.20–0.74)
≥70	Good	≥1	22 (48.9)	0.36 (0.18–0.71)	0.38 (0.18–0.82)
≥70	Poor	0	25 (55.5)	0.47 (0.24–0.93)	0.37 (0.17–0.80)
≥70	Poor	≥1	40 (33.9)	0.19 (0.12–0.32)	0.17 (0.09–0.30)

Notes: *High-risk stage II patients. Good FS: ASA I-II, ECOG=0 or KPS 80–100. Poor FS: ASA III-IV, ECOG 1–4 or KPS 10–70. ^aIncludes patients who received adjuvant chemoradiotherapy (no patient received only radiotherapy). [†]Adjusted for sex, years of school education, having a partner, year of diagnosis, tumor stage, grade, number of lymph nodes examined, surgical volume and surgical technique (backward elimination of covariates with $p>0.5$; sex and tumor stage were forced into the model). Statistically significant results are highlighted in bold.

Abbreviations: FS, Functional status; CCI, Charlson comorbidity index score; OR, Odds ratio; CI, Confidence interval; ASA, American Society of Anesthesiologists' grade; ECOG, Eastern Cooperative Oncology Group score; KPS, Karnofsky Performance Score.

significant interaction between chemotherapy and BMI was observed for OS and DSS (Table S3).

In sensitivity analyses where the weights of chemotherapy non-recipients were truncated at the 99th percentile, the associations became slightly stronger and were similar to those from PS adjusted models (Table S4). The associations also persisted after accounting for immortal time bias (Table S5). Upon accounting for competing events, the associations for DSS (HR=0.83) and nDSS (HR=0.73) were attenuated. The most common cause of death other

than CC was due to cardiovascular incidents (39%), which were more frequent in non-recipients than in recipients of chemotherapy (Table S6).

Discussion

Older CC patients, in whom comorbidities and functional impairment are common, constitute a large proportion of CC patients who are often underrepresented in RCTs. Hence, estimates for chemotherapy effects from RCTs might be less generalizable to unselected patient populations. Results

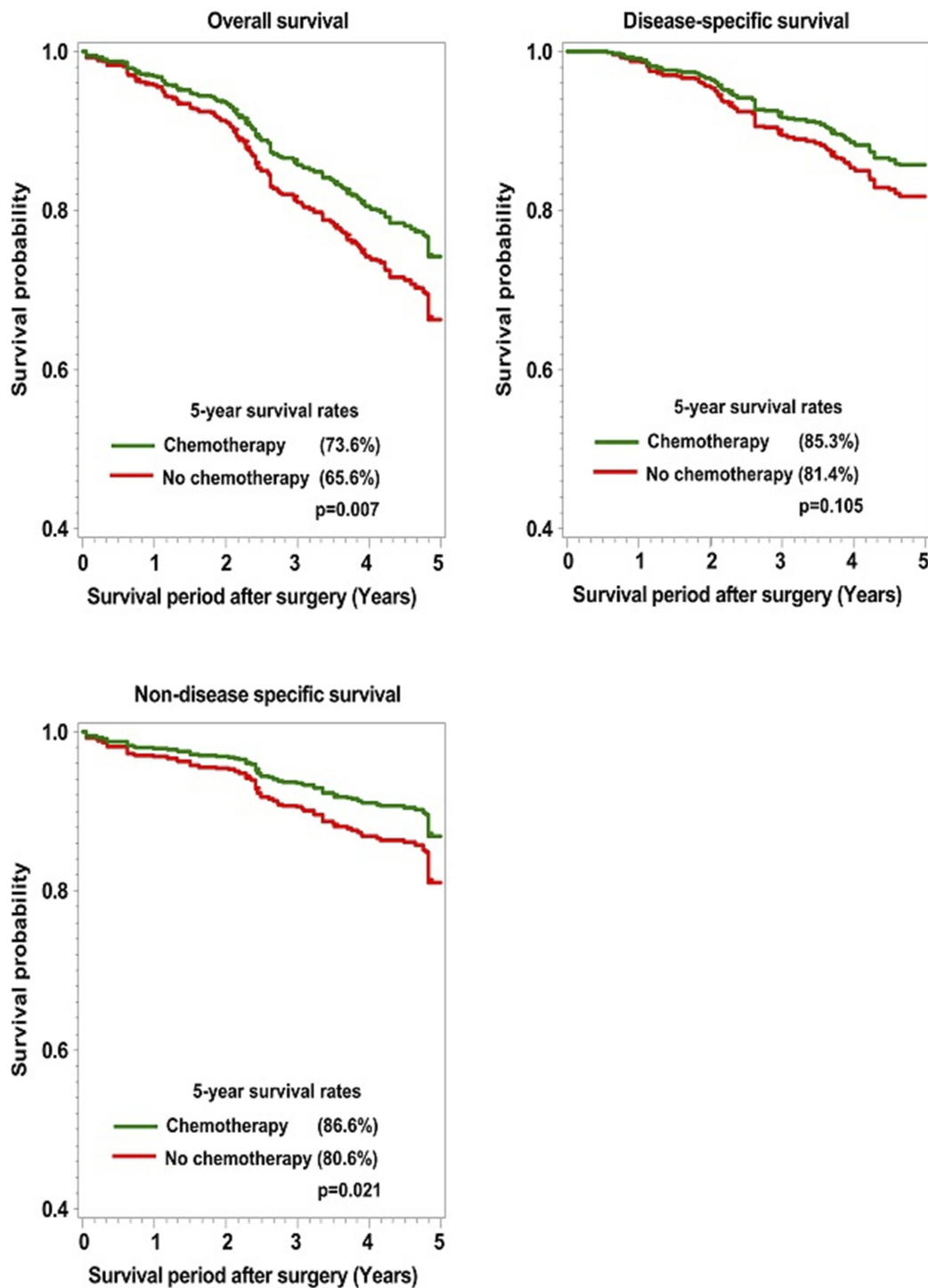


Figure 1 Adjusted survival curves for chemotherapy use and survival outcomes in stage III colon cancer patients.

from observational studies might address this limitation, but these studies often lacked information on pertinent comorbidities and FS overall.^{17–22} Furthermore, treatment selection bias could impact estimates for treatment effects, but it is unclear whether adjustment for comorbidities and FS is sufficient to address this bias. In this population-based

study, comorbidities were associated with less frequent administration of chemo/radiotherapy in both CC and RC patients, especially in those with functional impairment and older age. After accounting for comorbidity and FS in our comprehensive PS analyses in stage III CC patients, treatment selection bias for chemotherapy persisted, as

Table 5 Association of chemotherapy with survival outcomes in stage III colon cancer patients (n=430)

Outcome	Chemo	n	e	Propensity score weighting			Covariates adjustment
				HR ^a (95% CI)	HR ^b (95% CI)	HR ^c (95% CI)	HR ^c (95% CI)
OS	No	109	62	Ref	Ref	Ref	Ref
	Yes	321	96	0.53 (0.43–0.67)	0.64 (0.51–0.81)	0.73 (0.58–0.92)	0.57 (0.38–0.87)
DSS	No	109	26	Ref	Ref	Ref	Ref
	Yes	321	63	0.62 (0.45–0.84)	0.70 (0.52–0.96)	0.77 (0.56–1.06)	0.71 (0.39–1.30)
nDSS	No	109	36	Ref	Ref	Ref	Ref
	Yes	321	33	0.45 (0.33–0.63)	0.58 (0.41–0.82)	0.66 (0.46–0.92)	0.39 (0.20–0.75)
nDSS for patients <75 years	No	27	8	Ref	Ref	Ref	Ref
	Yes	247	16	0.20 (0.11–0.37)	0.30 (0.16–0.57)	0.33 (0.17–0.63)	0.03 (0.01–0.15)
nDSS for patients 75+ years	No	82	28	Ref	Ref	Ref	Ref
	Yes	74	17	0.92 (0.61–1.39)	0.98 (0.65–1.48)	1.05 (0.69–1.59)	0.49 (0.20–1.20)

Notes: ^aAge, sex, having a partner, years of school education, body mass index, smoking status, lifetime physical activity, lifetime alcohol consumption, N-stage, T-stage, grade, number of examined lymph nodes, surgical technique and surgical volume. ^bModel 1 plus Charlson comorbidity scores (both physician- and patient-reported comorbidities). ^cModel 2 plus functional status and functional status assessment time. Statistically significant results are highlighted in bold

Abbreviations: Chemo, received chemotherapy; n, Number of patients at risk; e, Number of events; HR, Hazard ratio; CI, Confidence interval; OS, Overall survival; DSS, Disease-specific survival; nDSS, Non-disease-specific survival.

chemotherapy improved nDSS more strongly than DSS, especially in patients <75 years.

In agreement with findings from previous studies,^{5–13} we found substantially lower chemotherapy use in comorbid CC patients. Preoperative chemoradiotherapy in non-metastatic RC patients reduces local recurrence and improves sphincter preservation.³⁵ Comorbidity was inversely associated with administration of neoadjuvant chemoradiotherapy and adjuvant chemotherapy in RC patients in our study. Only two previous studies^{13,36} have addressed the association of comorbidity with neoadjuvant and adjuvant chemoradiotherapy, but they did not distinguish between these types of treatments in their analysis.

No previous study has investigated the joint effect of comorbidity and FS on CRC treatments. We observed stronger effects of comorbidity in older and functionally impaired patients. Our results suggest that in younger patients, comorbidities alone might have a minor role in therapeutic decisions. In combination with functional impairment, comorbidity however strongly impacted treatment decisions, especially in older patients. This indicates that enhanced management of geriatric syndromes might be most useful. Our results also highlight the need for studies estimating treatment effects to account for these characteristics in order to obtain unbiased estimates.

Population-based studies have shown substantial benefit of chemotherapy in stage III CC patients.^{17–22} These studies, however, mostly ascertained comorbidities from

administrative records, which are known to underestimate comorbidities, and also lacked information on FS. Given the important roles of comorbidities and FS in treatment decisions and in CC prognosis,³⁷ we estimated the extent to which these characteristics explain chemotherapy benefits in stage III CC patients. We found that lower comorbidity and higher FS of chemotherapy recipients explained approximately 38% of the improved survival in chemotherapy recipients. In the comprehensive PS models, we observed a 27% significant reduction in all-cause mortality in chemotherapy recipients, which is comparable to results from the US-SEER²² and NYSCR-Medicare data,¹⁹ but is lower than those reported in many previous studies (HR_{range} 0.42 to 0.63).^{17–19} Similarly, our estimate for DSS (HR=0.77) was much lower than those previously reported (HR_{range} 0.36 to 0.65).^{17,20,21} Our 5-year OS estimates for chemotherapy recipients and non-recipients (73.6% vs 65.6%; HR=0.73) were, however, very similar to those from RCTs (71% vs 64%; HR=0.76).¹⁶

A possible explanation for the much smaller benefits of chemotherapy in our study than those reported in previous observational studies is that many previous studies did not include important factors such as BMI, alcohol consumption, smoking and physical activity in their PS models,^{17,19,20} and the study by Boland et al²¹ in particular lacked information on comorbidities. Our results suggest that treatment effects were most likely overestimated in previous observational studies due to residual confounding from either imperfectly

ascertained comorbidity status or lack of information on FS. For instance, when we excluded comorbidity and FS from the models, chemotherapy benefits increased from 27% to 47% for OS and from 23% to 38% for DSS and were comparable to those from previous studies. It is thus important that future studies evaluating treatment effects discuss the possibility of strong overestimation of chemotherapy effects when lacking a comprehensive adjustment for FS and comorbidities.

Adjustment for FS and comorbidity in addition to other known treatment-related and prognostic factors is necessary to obtain unbiased estimates for treatment effects, but residual confounding could still persist. We hypothesized that if the benefit of chemotherapy is independent of selection bias, then it should be much more pronounced for DSS than for nDSS. We investigated this by evaluating the association of chemotherapy with non-CC mortality. Our data showed a stronger benefit of chemotherapy for nDSS (HR=0.66; $p=0.021$) than for DSS (HR=0.77; $p=0.105$), especially in younger patients (HR=0.33; $p=0.001$). Despite the strong overlap of the distribution of PS observed in the treatment groups and the estimates from the PS models being substantially lower than those from the covariate adjustment models, selection bias was still observed and affected the treatment effect for OS. Among the chemotherapy non-recipients, the majority died from causes other than CC (58%). Upon accounting for competing events, the association for nDSS was attenuated and lost statistical significance (HR=0.73) but was still stronger than for DSS (HR=0.83). Clinicians and researchers should thus be aware that even after comprehensive account for confounding with PS methods, substantial treatment selection bias can be observed in observational studies leading to an overestimation of treatment effects. Treatment selection bias or confounding by indication might therefore not be possible to be resolved by PS analysis.³⁸

For the first time, we have investigated the extent to which comorbidities and FS might jointly impact treatment decisions in both younger and older CC and RC patients. Information on treatment was collected prospectively, and comorbidities were assessed around the time of CRC diagnosis, thereby minimizing potential reverse causality issues. Likewise for the first time, we have estimated the extent to which lower comorbidity and higher FS might explain the benefit of chemotherapy in stage III CC patients, using robust PS methods. Our study also has limitations. Although we made extensive efforts to

include patients of all ages, the overall recruitment rate of patients in the study region was approximately 50%, with higher rates in younger patients. However, unlike many previous studies, our study had no upper age limit, which has merits when evaluating the impact of comorbidity on treatment patterns. We restricted our analytic sample to patients recruited in hospitals that reported FS data for at least 75% of the patients. However, it is worth mentioning that only 23 (5.1%) patients were excluded, and they were not different from the included sample in terms of mean age (72.3 vs 69.9; $p=0.287$) or proportion with comorbidities (47.8% vs 46.1%; $p=0.868$).

Conclusion

Lower comorbidity and higher FS explain approximately 40% of the benefit of chemotherapy in stage III CC patients. Previous observational studies most likely overestimated the benefit of chemotherapy, possibly due to less comprehensive ascertainment of comorbidities or lack of information on FS. Regardless of how robust PS analyses might be in observational studies, treatment selection bias might persist and affect estimates of treatment effects.

Acknowledgment

We would like to thank Ute Handte-Daub, Ansgar Brandhorst and Petra Bächer for their excellent technical assistance. We are particularly grateful to the study participants, as well as the interviewers who assisted in the data collection. We also gratefully appreciate the cooperation of the below-listed clinics and institutions: Chirurgische Universitätsklinik Heidelberg, Klinik am Gesundbrunnen Heilbronn, St. Vincentiuskrankenhaus Speyer, St. Josefskrankenhaus Heidelberg, Chirurgische Universitätsklinik Mannheim, Diakonissenkrankenhaus Speyer, Krankenhaus Salem Heidelberg, Kreiskrankenhaus Schwetzingen, St. Marienkrankenhaus Ludwigshafen, Klinikum Ludwigshafen, Stadtklinik Frankenthal, Diakoniekrankenhaus Mannheim, Kreiskrankenhaus Sinsheim, Klinikum am Plattenwald Bad Friedrichshall, Kreiskrankenhaus Weinheim, Kreiskrankenhaus Eberbach, Kreiskrankenhaus Buchen, Kreiskrankenhaus Mosbach, Enddarmzentrum Mannheim, Kreiskrankenhaus Brackenheim and Cancer Registry of Rhineland-Palatinate, Mainz. This work was supported by grants from the German Research Council (grant numbers BR 1704/6-1, BR 1704/6-3, BR 1704/6-4, CH 117/1-1); the German Federal Ministry of Education and Research (grant numbers 01KH0404, 01ER0814, 01ER0815, 01ER1505A, 01ER1505B); and the Ministry of

Science, Research and Arts of Baden-Wuerttemberg. The funding bodies had no role in the design, the analysis or interpretation of the data, the writing of the manuscript, or the decision to publish this study.

Author contributions

All authors contributed towards data analysis, drafting and critically revising the paper, gave final approval of the version to be published, and agreed to be accountable for all aspects of the work.

Disclosure

Daniel Boakye, Viola Walter, Jenny Chang-Claude, Michael Hoffmeister, Lina Jansen and Hermann Brenner have no conflicts of interest to be disclosed. Uwe M Martens has the following conflicts of interest: previously received payment for consulting and advisory roles from Roche and Amgen; and has previously received travel grants and grants for accommodation from Amgen. The authors report no other conflicts of interest in this work.

References

- van Leersum NJ, Janssen-Heijnen ML, Wouters MW, et al. Increasing prevalence of comorbidity in patients with colorectal cancer in the South of the Netherlands 1995–2010. *Int J Cancer*. 2013;132:2157–2163. doi:10.1002/ijc.27871
- Labianca R, Nordlinger B, Beretta GD, et al. Early colon cancer: ESMO Clinical Practice Guidelines for diagnosis, treatment and follow-up. *Ann Oncol*. 2013;24(Suppl 6):vi64–vi72. doi:10.1093/annonc/mdt354
- Pox C, Aretz S, Bischoff SC, et al. S3-Leitlinie Kolorektales Karzinom Version 1.0 – Juni 2013 AWMF-Registernummer: 021/007OL. *Z Gastroenterol*. 2013;51:753–854. doi:10.1055/s-0033-1350264
- Glynn-Jones R, Wyrwicz L, Tiret E, et al. Rectal cancer: ESMO Clinical Practice Guidelines for diagnosis, treatment and follow-up. *Ann Oncol*. 2017;28:iv22–iv40. doi:10.1093/annonc/mdx075
- Ayanian JZ, Zaslavsky AM, Fuchs CS, et al. Use of adjuvant chemotherapy and radiation therapy for colorectal cancer in a population-based cohort. *J Clin Oncol*. 2003;21:1293–1300. doi:10.1200/JCO.2003.06.178
- Lemmens VE, Janssen-Heijnen ML, Verheij CD, Houterman S, Repelaer van Driel OJ, Coebergh JW. Co-morbidity leads to altered treatment and worse survival of elderly patients with colorectal cancer. *Br J Surg*. 2005;92:615–623. doi:10.1002/bjs.4913
- McGory ML, Zingmond DS, Sekeris E, Bastani R, Ko CY. A patient's race/ethnicity does not explain the underuse of appropriate adjuvant therapy in colorectal cancer. *Dis Colon Rectum*. 2006;49:319–329. doi:10.1007/s10350-005-0283-6
- Bradley CJ, Given CW, Dahman B, Fitzgerald TL. Adjuvant chemotherapy after resection in elderly Medicare and Medicaid patients with colon cancer. *Arch Intern Med*. 2008;168:521–529. doi:10.1001/archinternmed.2007.82
- Sarfati D, Hill S, Blakely T, et al. The effect of comorbidity on the use of adjuvant chemotherapy and survival from colon cancer: a retrospective cohort study. *BMC Cancer*. 2009;9:116. doi:10.1186/1471-2407-9-116
- Chagpar R, Xing Y, Chiang YJ, et al. Adherence to stage-specific treatment guidelines for patients with colon cancer. *J Clin Oncol*. 2012;30:972–979. doi:10.1200/JCO.2011.39.6937
- Chandhoke G, Wei XJ, Nanji S, et al. Patterns of referral for adjuvant chemotherapy for stage II and III colon cancer: a population-based study. *Ann Surg Oncol*. 2016;23:2529–2538. doi:10.1245/s10434-016-5181-8
- Hsieh MC, Thompson T, Wu XC, et al. The effect of comorbidity on the use of adjuvant chemotherapy and type of regimen for curatively resected stage III colon cancer patients. *Cancer Med*. 2016;5:871–880. doi:10.1002/cam4.632
- Murphy CC, Harlan LC, Lund JL, Lynch CF, Geiger AM. Patterns of colorectal cancer care in the United States: 1990–2010. *J Natl Cancer Inst*. 2015;107:djv198.
- Hu CY, Delclos GL, Chan W, Du XL. Assessing the initiation and completion of adjuvant chemotherapy in a large nationwide and population-based cohort of elderly patients with stage-III colon cancer. *Med Oncol*. 2011;28:1062–1074. doi:10.1007/s12032-010-9644-7
- Gustavsson B, Carlsson G, Machover D, et al. A review of the evolution of systemic chemotherapy in the management of colorectal cancer. *Clin Colorectal Cancer*. 2015;14:1–10. doi:10.1016/j.clcc.2014.11.002
- Sargent DJ, Goldberg RM, Jacobson SD, et al. A pooled analysis of adjuvant chemotherapy for resected colon cancer in elderly patients. *N Engl J Med*. 2001;345:1091–1097. doi:10.1056/NEJMoa010957
- Booth CM, Nanji S, Wei X, et al. Use and effectiveness of adjuvant chemotherapy for stage III colon cancer: a population-based study. *J Natl Compr Canc Netw*. 2016;14:47–56.
- Hines RB, Bimali M, Johnson AM, Bayakly AR, Collins TC. Prevalence and survival benefit of adjuvant chemotherapy in stage III colon cancer patients: Comparison of overall and age-stratified results by multivariable modeling and propensity score methodology in a population-based cohort. *Cancer Epidemiol*. 2016;44:77–83. doi:10.1016/j.canep.2016.08.004
- Sanoff HK, Carpenter WR, Stürmer T, et al. Effect of adjuvant chemotherapy on survival of patients with stage III colon cancer diagnosed after age 75 years. *J Clin Oncol*. 2012;30:2624–2634. doi:10.1200/JCO.2011.41.1140
- Zuckerman IH, Rapp T, Onukwugha E, et al. Effect of age on survival benefit of adjuvant chemotherapy in elderly patients with Stage III colon cancer. *J Am Geriatr Soc*. 2009;57:1403–1410. doi:10.1111/j.1532-5415.2009.02355.x
- Boland GM, Chang GJ, Haynes AB, et al. Association between adherence to National Comprehensive Cancer Network treatment guidelines and improved survival in patients with colon cancer. *Cancer*. 2013;119:1593–1601. doi:10.1002/cncr.27935
- Iwashyna TJ, Lamont EB. Effectiveness of adjuvant fluorouracil in clinical practice: a population-based cohort study of elderly patients with stage III colon cancer. *J Clin Oncol*. 2002;20:3992–3998. doi:10.1200/JCO.2002.03.083
- Austin PC. An introduction to propensity score methods for reducing the effects of confounding in observational studies. *Multivariate Behav Res*. 2011;46:399–424. doi:10.1080/00273171.2011.568786
- Brenner H, Chang-Claude J, Jansen L, Knebel P, Stock C, Hoffmeister M. Reduced risk of colorectal cancer up to 10 years after screening, surveillance, or diagnostic colonoscopy. *Gastroenterology*. 2014;146:709–717. doi:10.1053/j.gastro.2013.09.001
- Hoffmeister M, Jansen L, Rudolph A, et al. Statin use and survival after colorectal cancer: the importance of comprehensive confounder adjustment. *J Natl Cancer Inst*. 2015;107:djv045. doi:10.1093/jnci/djv045
- Charlson ME, Pompei P, Ales KL, MacKenzie CR. A new method of classifying prognostic comorbidity in longitudinal studies: development and validation. *J Chronic Dis*. 1987;40:373–383.
- Owens WD, Felts JA, Spitznagel EL Jr. ASA physical status classifications: a study of consistency of ratings. *Anesthesiology*. 1978;49:239–243. doi:10.1097/0000542-197810000-00003
- Oken MM, Creech RH, Tormey DC, et al. Toxicity and response criteria of the Eastern Cooperative Oncology Group. *Am J Clin Oncol*. 1982;5:649–655.

29. Karnofsky DA, Abelmann WH, Craver LF, et al. The use of the nitrogen mustards in the palliative treatment of carcinoma. With particular reference to bronchogenic carcinoma. *Cancer*. 1948;1:634–656. doi:10.1002/1097-0142(194811)1:4<634::AID-CNCR2820010410>3.0.CO;2-L
30. European Society for Medical Oncology [homepage on the Internet]. Performance scales: Karnofsky & ECOG scores. 2018. Available from: <https://oncologypro.esmo.org/Oncology-in-Practice/Practice-Tools/Performance-Scales/>. Accessed August 3, 2018.
31. Austin PC, Stuart EA. Moving towards best practice when using inverse probability of treatment weighting (IPTW) using the propensity score to estimate causal treatment effects in observational studies. *Stat Med*. 2015;34:3661–3679. doi:10.1002/sim.6607
32. Lee BK, Lessler J, Stuart EA. Weight trimming and propensity score weighting. *PLoS One*. 2011;6:e18174. doi:10.1371/journal.pone.0018174
33. Mantel N, Byar DP. Evaluation of response-time data involving transient states: an illustration using Heart-Transplant Data. *J Am Stat Assoc*. 1974;69:81–86. doi:10.1080/01621459.1974.10480131
34. Fine JP, Gray RJ. A proportional hazards model for the subdistribution of a competing risk. *J Am Stat Assoc*. 1999;94:496–509. doi:10.1080/01621459.1999.10474144
35. McCarthy K, Pearson K, Fulton R, Hewitt J. Pre-operative chemoradiation for non-metastatic locally advanced rectal cancer. *Cochrane Database Syst Rev*. 2012;12:Cd008368.
36. Esnaola NF, Stewart AK, Feig BW, Skibber JM, Rodriguez-Bigas MA. Age-, race-, and ethnicity-related differences in the treatment of nonmetastatic rectal cancer: a patterns of care study from the national cancer data base. *Ann Surg Oncol*. 2008;15:3036–3047. doi:10.1245/s10434-008-0106-9
37. Boakye D, Rillmann B, Walter V, Jansen L, Hoffmeister M, Brenner H. Impact of comorbidity and frailty on prognosis in colorectal cancer patients: A systematic review and meta-analysis. *Cancer Treat Rev*. 2018;64:30–39. doi:10.1016/j.ctrv.2018.02.003
38. Freemantle N, Marston L, Walters K, Wood J, Reynolds MR, Petersen I. Making inferences on treatment effects from real world data: propensity scores, confounding by indication, and other perils for the unwary in observational research. *BMJ*. 2013;347:f6409. doi:10.1136/bmj.f6409

Clinical Epidemiology

Dovepress

Publish your work in this journal

Clinical Epidemiology is an international, peer-reviewed, open access, online journal focusing on disease and drug epidemiology, identification of risk factors and screening procedures to develop optimal preventative initiatives and programs. Specific topics include: diagnosis, prognosis, treatment, screening, prevention, risk factor modification,

systematic reviews, risk & safety of medical interventions, epidemiology & biostatistical methods, and evaluation of guidelines, translational medicine, health policies & economic evaluations. The manuscript management system is completely online and includes a very quick and fair peer-review system, which is all easy to use.

Submit your manuscript here: <https://www.dovepress.com/clinical-epidemiology-journal>