

# Association between cell growth and vancomycin resistance in clinical community-associated methicillin-resistant *Staphylococcus aureus*

This article was published in the following Dove Press journal:  
*Infection and Drug Resistance*

Tetsuo Yamaguchi<sup>1,2</sup>  
Rina Ando<sup>2</sup>  
Tetsuya Matsumoto<sup>2</sup>  
Yoshikazu Ishii<sup>1</sup>  
Kazuhiro Tateda<sup>1</sup>

<sup>1</sup>Department of Microbiology and Infectious Diseases, Toho University School of Medicine, Tokyo, Japan;  
<sup>2</sup>Department of Microbiology, Tokyo Medical University, Tokyo, Japan

**Objectives:** We investigated the association between the rate of cell growth and vancomycin (VAN) resistance by comparing the genomic and phenotypic characteristics of different sized colonies isolated from a single origin.

**Methods:** Vancomycin-intermediate *Staphylococcus aureus* (VISA) strain TMUS2136 was isolated from the pus of a patient with a brain abscess and a chronic subdural abscess. This strain grew slowly and formed colonies poorly on agar plates within 24 h of incubation. However, variously sized colonies were observed after 48 h of incubation. We isolated five strains from different sized colonies and compared their VAN susceptibility and genomic sequences using next-generation sequencing.

**Results:** The five strains showed different rates of growth and susceptibilities to VAN (range of MIC after 48 h of incubation; 3–5 mg/L), and slower growing strains tended to be more VAN resistant. Deletion of the *spdC* gene and SNPs in the *sarA* gene was confirmed in all five strains and six SNPs in other genes (including *mreC*, *hssS*, *prs*, SA2339, *sun*, and SA1132) were confirmed when comparing the five strains.

**Conclusions:** Deletion of the *spdC* gene, a novel virulence factor of *S. aureus*, and SNPs in the *sarA* gene may be associated with VAN resistance. It was hypothesized that any of the six genes in which SNPs were detected could affect cell growth rate and VAN resistance in slow-VISA strains.

**Keywords:** next generation sequencing, MRSA, VISA, vancomycin

## Introduction

Methicillin-resistant *Staphylococcus aureus* (MRSA) was first isolated in 1960 in England, just after methicillin had become commercially available. MRSA is a derivative of *S. aureus* that gained resistance to  $\beta$ -lactam antibiotics by acquiring the *mecA* gene (or *mecC* gene) in its chromosomal DNA.<sup>1</sup> It has become endemic in most hospitals and healthcare facilities in industrialized countries since the 1980s (termed healthcare-associated MRSA, HA-MRSA).<sup>2,3</sup> Furthermore, community-associated MRSA (CA-MRSA) infections occurring in otherwise healthy individuals, including children, appeared in the 1990s,<sup>4,5</sup> suggesting that these bacterial strains have greater virulence than traditional HA-MRSA strains. Since the mid-2000s, MRSA has also been associated with livestock exposure (livestock-associated MRSA, LA-MRSA),<sup>6</sup> and has thus become a health threat in a variety of environments.

In addition to virulence factors, a key factor that makes it more difficult to cure MRSA infection is the diversity of mechanisms of antimicrobial resistance.

Correspondence: Tetsuo Yamaguchi  
Department of Microbiology and Infectious Diseases, Toho University School of Medicine, 5-21-16, Omori-nishi, Ota-ku, Tokyo 143-8540, Japan  
Tel +81 33 762 4151 Ext. 2396  
Fax +81 35 493 5415  
Email tetsuo.yamaguchi@med.toho-u.ac.jp

The year 2020 marks the 60th anniversary of our continuous battle against MRSA. MRSA has acquired resistance to practically all the antibiotics brought into clinical use in the past 50 years, including vancomycin (VAN).<sup>7,8</sup> According to the minimum inhibitory concentrations (MICs) of VAN, *S. aureus* strains are classified into vancomycin susceptible *S. aureus* (VSSA) (minimum inhibitory concentration [MIC]  $\leq 2$  mg/L), vancomycin intermediate *S. aureus* (VISA) (MIC 4–8 mg/L), and vancomycin resistant *S. aureus* (VRSA) (MIC  $\geq 16$  mg/L). VRSA is a highly VAN-resistant strain that acquired the *vanA* gene through conjugated transfer, although fortunately it has not been detected in Japan.<sup>9</sup> It is known that the mechanism of resistance of VISA differs from that of VRSA, and VISA strains are often detected around the world, including Japan.<sup>10</sup> VISA acquires VAN resistance by thickening of the cell wall. It was reported that one or several single nucleotide polymorphisms (SNPs) in cell wall formulation genes, for example SNPs in *walk*, *walS*, or *walR*, cause thickening of the cell wall and result in reduced sensitivity to VAN.<sup>10</sup> However, it is sometimes difficult to detect clinically relevant VISA strains with precision, because there are cases where the MIC of the clinical VISA strain is under 4 mg/L, including hetero-VISA and slow growing VISA (slow-VISA).<sup>11,12,13</sup> The infectious disease caused by VISA, including hetero-VISA and slow-VISA, may show VAN-treatment resistance, and therefore it is important to detect VISA strains reliably in clinical settings.

We have obtained the VISA strain isolated from a subdural abscess.<sup>14</sup> This clinical isolate grows slowly, thus the MICs of VAN after 24 and 48 h of incubation were 2 mg/L (sensitive) and 4 mg/L (intermediate), respectively. According to the Clinical & Laboratory Standards Institute (CLSI) criteria (24 h incubation),<sup>15</sup> this isolate was therefore judged as VSSA, not VISA. However, the present case showed resistance to VAN treatment in a clinical setting. It was difficult to judge the resistance of this organism because of its slow growth; however, we conducted population analysis of this isolate and determined that it was a VISA strain. Additionally, this isolate grows slowly and forms colonies poorly on agar plates within 24 h of incubation, although it produces various sized colonies after 48 h of incubation. Several strains obtained from a variety of different sized colonies showed different VAN sensitivities and growth rates when compared with each other. It was thought that these strains were the same clone

having the same origin; however, it is a problem clinically if VAN sensitivity changes depending on which colony is picked.

In this study, we compared the genomic and phenotypic characteristics of these strains obtained from a variety of different sized colonies sharing the same origin. The purpose of this study was to clarify the association between cell growth rate (colony size), VAN resistance, and genome sequence.

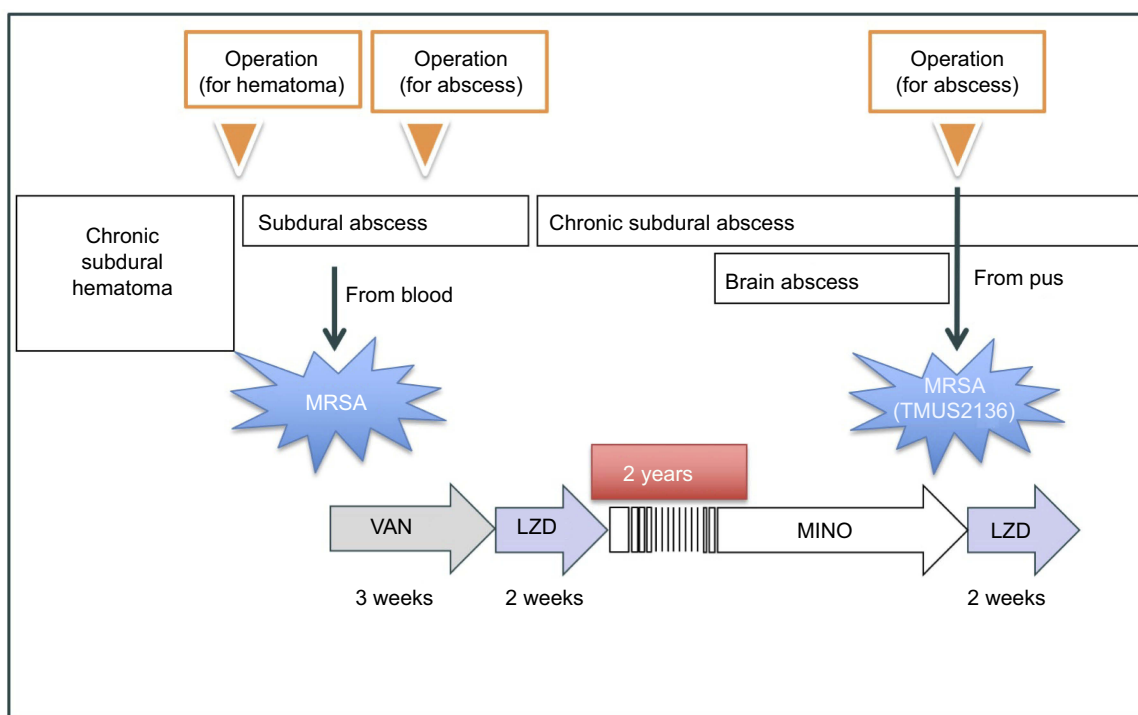
## Materials and methods

### Bacterial strains

Vancomycin-intermediate *Staphylococcus aureus* (VISA) strain TMUS2136 was isolated from the pus of a 77-year-old Japanese patient with brain and chronic subdural abscesses.<sup>14</sup> He had multiple administrations of anti-MRSA antimicrobial agents, including VAN (3 weeks) and linezolid (LZD) (2 weeks), for a MRSA subdural abscess 2 years previously, followed by minocycline (MINO) for a chronic subdural abscess for 2 years (Figure 1). This strain grew slowly and formed colonies poorly on agar plates within 24 h of incubation, although colonies of various sizes were observed after 48 h incubation. We purified five different sized colonies (designated 1L-L, 1L-S, 1S-L, 1S-S, and 3S in descending order of size) of strain TMUS2136 on agar plates after repeating incubation twice (Figure 2). We subsequently analyzed these five strains and four additional control MRSA strains (USA300 clone BAA1556, New York/Japan clone N315, hetero-VISA strain Mu3, and VISA strain Mu50). Pathogen protocols were approved by Toho University Safety Committee for Pathogens (approval number 17-55-58).

### Growth rate of strains

The growth rate of these strains was determined by their absorbance values. Each strain was cultured on BHI agar overnight. Then 0.5 McFarland suspensions from colonies on the BHI agar were diluted 200 times into 6 mL of fresh BHI broth in an L-shaped tube and were incubated at 35 °C with mixing by inversion at 25 rpm in an automatic photo-recording incubator (TVS062CA, Advantec, Osaka, Japan). The optical density (OD) at 660 nm was automatically monitored and recorded every 10 min. For doubling-time determinations, the OD versus time was plotted for each strain in the exponential growth phase. The doubling times were then calculated as follows:  $[(t_2 - t_1) \times \log 2] / (\log OD_{660} \text{ at } t_2 - \log OD_{660} \text{ at } t_1)$ .<sup>16</sup> Doubling time was



**Figure 1** Timeline of administration of antimicrobial agents to the patient from which strain TMUS2136 was isolated. Strain TUM2136 was isolated from a patient who had been administered a number of anti-MRSA agents over the long term. These stresses may have influenced the growth speed and VAN resistance of organisms. **Abbreviations:** MRSA, methicillin-resistant *Staphylococcus aureus*; VAN, vancomycin; LZD, linezolid; MINO, minocycline.

measured in at least three independent experiments and was used for statistical analysis. One-way ANOVA followed by Tukey's multiple comparison test were performed using GraphPad Prism (version 8, GraphPad Software Inc., San Diego, CA, USA).  $P$ -values  $<0.0001$  were considered statistically significant.

### VAN susceptibility tests

The VAN MIC of strains at several time points was determined by an Etest using Etest strips (bioMérieux, Marcy-l'Etoile, France) and MHA plates (Eiken Chemical, Tokyo, Japan). The time points were 24, 48, 72, and 96 h after incubation.

### Population analysis

Analysis of resistant subpopulations of bacteria (population analysis) was performed by spreading 50  $\mu$ L of the starting cell suspension (prepared by diluting overnight cultures to an OD of 0.1, as determined by a MicroScan Turbidity Meter (SIEMENS, Munich, Germany)) and its serial diluents over BHI agar plates containing various concentrations of VAN. The plates were incubated at 35  $^{\circ}$ C for 72 h, and the number of mature colonies was counted at 24, 48, and 72 h. The number of resistant cells

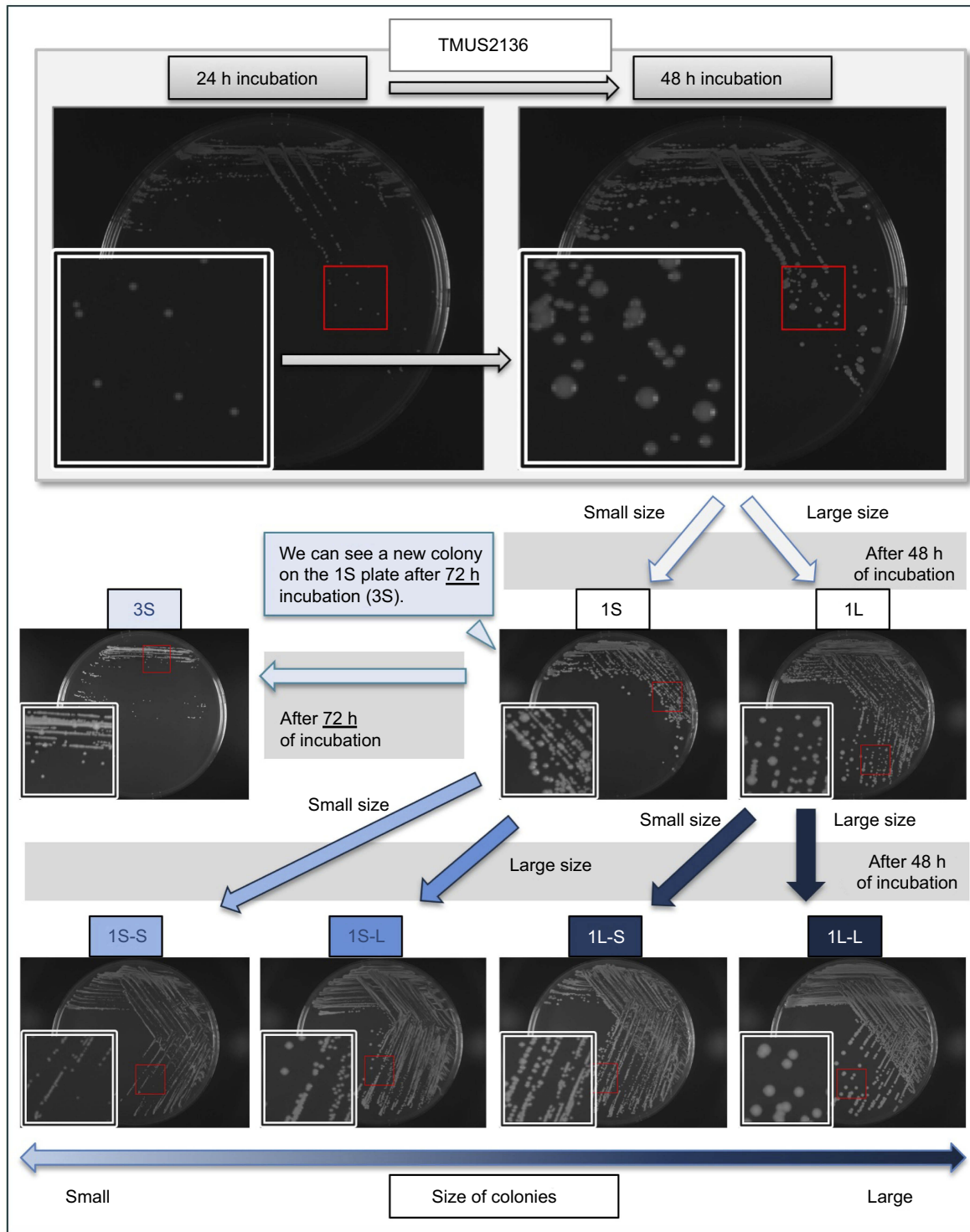
contained in the starting cell suspension was calculated and plotted on a semi-logarithmic graph.

### Pulsed-field gel electrophoresis (PFGE)

All strains were examined by pulsed-field gel electrophoresis. After digestion of the genomic DNA with *Sma*I (New England Biolabs, Ipswich, MA, USA), the restriction fragments were separated using a temperature-controlled CHEF DR III system (Bio-Rad, Hercules, CA, USA) at 6.0 V for 24 h at switch times ramped from 5 to 60 s. After staining with ethidium bromide, the fragments were visualized using an UV transilluminator.

### Whole-genome sequencing and identification of mutations

Each of the strains were cultured overnight in heart infusion broth (Eiken Chemical Co.) and the cells were harvested by centrifugation at 8,000 $\times$  g for 3 min. Bacterial genomic DNA was then extracted using a DNeasy Blood & Tissue Kit (Qiagen, Hilden, Germany) with lysostaphin (Wako, Osaka, Japan). Genomic DNAs were used as a template for whole-genome sequencing by next-generation sequencing (NGS) using MiSeq (Illumina, San Diego, CA, USA).



**Figure 2** Purification protocol for five different sized colonies for analysis. The part enclosed by the white square is an enlarged view of the part enclosed in red. Incubation of TMUS2136 for over 48 h allowed for confirmation of small colonies not observed in the 24-h culture. When the observed large and small colonies are subcultured (1L and 1S, respectively), further large and small colonies are observed after 48 h of culture. When these large and small colonies were further subcultured, strains with four different sized colonies (1L-L and 1L-S from 1L, and 1S-L and 1S-S from 1S) were purified from strain TMUS2136 on agar plates. Incubation of 1S for over 72 h allowed for confirmation of small colonies not observed in the 48-h culture (3S).

DNA-libraries for NGS were prepared with Nextera XT DNA sample preparation kits (Illumina), in accordance with the manufacturer's protocol. Pools of five samples

were sequenced on the Illumina MiSeq platform, and 250-bp end reads were generated. Reads from bacterial strains were assembled using CLC Genomics Workbench v 11.0.1

software (Qiagen), and obtained contigs were analyzed using the SCCmecFinder service (<https://cge.cbs.dtu.dk/services/SCCmecFinder/>)<sup>17</sup> and the Multi-Locus Sequence Typing (MLST) service (<https://cge.cbs.dtu.dk/services/MLST/>) on the Center for Genomic Epidemiology homepage. Furthermore, reads from bacterial strains were mapped to the whole-genome reference sequence of N315 strain (accession no. NC\_002745.2) and BAA1556 strain (accession no. NC\_007793.1, the same sequence type strain as TMUS2136; ST8) using CLC Genomics Workbench v 11.0.1 software (Qiagen). The mutations were identified by comparing the draft genome sequences from isolated strains against the reference sequences. The sequence data for isolates were deposited in the DNA Data Bank of Japan (DDBJ) under accession numbers SAMD00115769 (3S), SAMD00115770 (1S-S), SAMD00115771 (1S-L), SAMD00115772 (1L-S), and SAMD00115773 (1L-L), respectively.

## Results

### Genome type of isolates

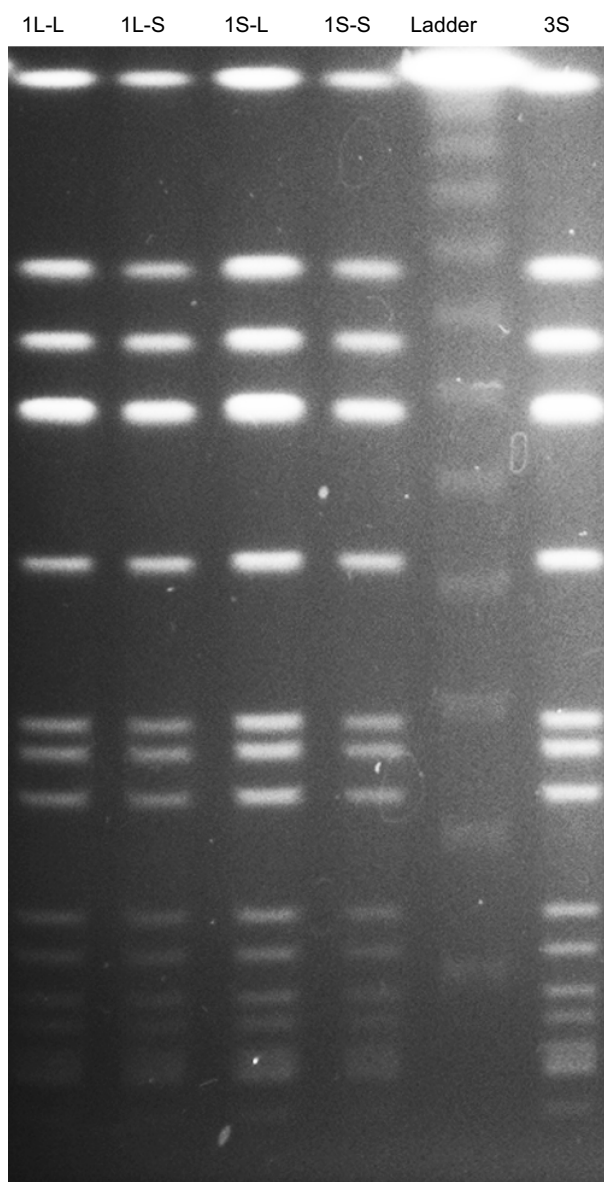
All five strains (1L-L, 1L-S, 1S-L, 1S-S, and 3S) showed the same banding pattern on PFGE (Figure 3). The genome types of these strains were ST8, SCCmec type IV, spa type t008, agr type I, PVL gene negative, and TSST-1 gene positive, the same genome type as the CA-MRSA/J clone that is the dominant clone in Japan.<sup>18</sup> Notably, this clone is isolated from not only community-associated settings, but also hospital-associated settings.<sup>19,20</sup>

### Growth rate of strains

The growth rate curves of the isolates are shown in Figure 4. Strain 3S obtained from the smallest colony grew the slowest, and strain 1L-L obtained from the largest colony grew the fastest. The slower the growth rate, the smaller the colony. The mean doubling times of BAA1556, N315, Mu3, Mu50, 1L-L, 1L-S, 1S-L, 1S-S, and 3S were 40.7, 45.8, 52.5, 57.0, 62.8, 66.8, 69.6, 115.1, and 124.0 min, respectively. Compared with BAA1556, N315, Mu3, Mu50, 1L-L, 1L-S, and 1S-L, 1S-S and 3S showed significantly longer doubling times ( $P < 0.0001$ ). 1S-S and 3S required 2 days incubation for MIC measurement by the Etest, and the mean doubling time was over 100 min. Strains with a doubling time of more than 100 min may be considered slow growing.

### VAN susceptibility tests

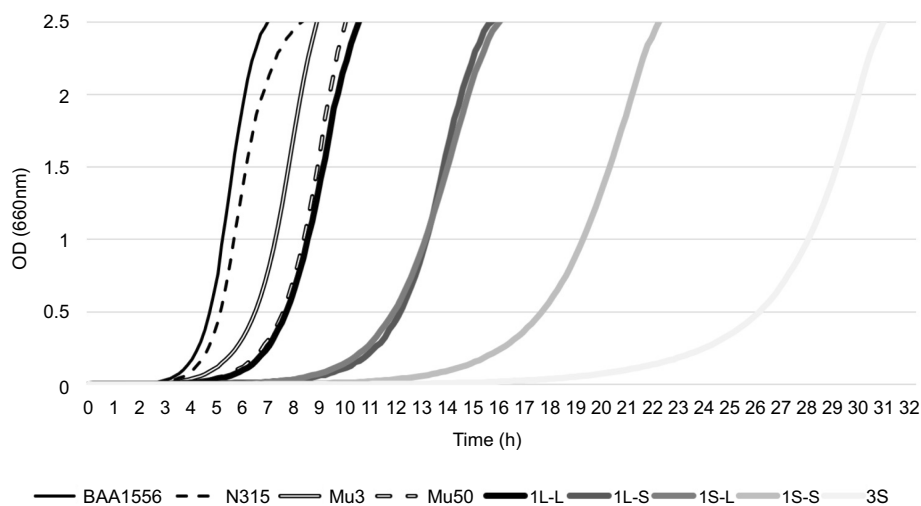
The VAN MICs of strains used in this study are shown in Table 1. The MIC of strain 1L-L was 3 mg/L after 24 h



**Figure 3** Pulsed-field gel electrophoresis patterns of *Sma*I-digested DNA from MRSA isolates. All strains used in this study (1L-L, 1L-S, 1S-L, 1S-S, and 3S) showed the same banding patterns.

**Abbreviation:** MRSA, methicillin-resistant *Staphylococcus aureus*.

incubation, and this did not change with additional incubation time (until after 96 h). The MIC of strain 1L-S was 2 mg/L after 24 h incubation; however, it changed to 3 mg/L after over 48 h incubation. The MICs of strains 1S-L, 1S-S, and 3S were difficult to determine because the growth of these strains could not be observed after 24 h incubation. However, after over 48 h incubation, the MIC of strains 1S-L and 1S-S was 4 mg/L. The MIC of strain 3S was 3 mg/L after 48 h incubation, increasing to 4 mg/L after 72 h incubation, and up to 5 mg/L after 96 h incubation. Interestingly, the slower the growth rate, the higher the MIC. The MIC of strains Mu3



**Figure 4** Growth rate of strain TMUS2136 isolates. Each strain was incubated in BHI broth with mixing by inversion, and the optical density at 660 nm versus time was plotted for each strain. BAA1556 is a USA300 clone categorized as community-associated MRSA and N315 is a New York/Japan clone categorized as hospital-associated MRSA. Compared with these two strains with standard growth rates, the hetero-VISA strain Mu3 and the VISA strain Mu50 showed slower growth, and five strains (1L-L, 1L-S, 1S-L, 1S-S, and 3S) showed even slower growth. Furthermore, strains with smaller colonies displayed slower growth rates among the five strains.

**Abbreviations:** MRSA, methicillin-resistant *Staphylococcus aureus*; VISA, vancomycin-intermediate *Staphylococcus aureus*.

**Table 1** VAN minimum inhibitory concentration (MIC) of isolates, as determined by an Etest (mg/L).

Strain		VAN MIC (mg/L) at:			
		24 h	48 h	72 h	96 h
1L-L		3	3	3	3
1L-S		2	3	3	3
1S-L		-	4	4	4
1S-S		-	4	4	4
3S		-	3	4	5
Mu3	Hetero-VISA	2	3	3	3
Mu50	VISA	4	8	8	8

**Notes:** VAN MICs of each isolate were confirmed after 24, 48, 72, and 96 h incubation. The growth of 1S-L, 1S-S, and 3S was too slow to detect colonies at 24 h.

**Abbreviations:** VAN, vancomycin; VISA, vancomycin-intermediate *Staphylococcus aureus*.

and Mu50 were that of typical hetero-VISA and VISA strains, respectively, and did not change after over 48 h incubation (Table 1). Strain 3S required 96 h growth before the VAN MIC could be determined, thus it was hypothesized that this strain should be categorized as a slow-VISA.

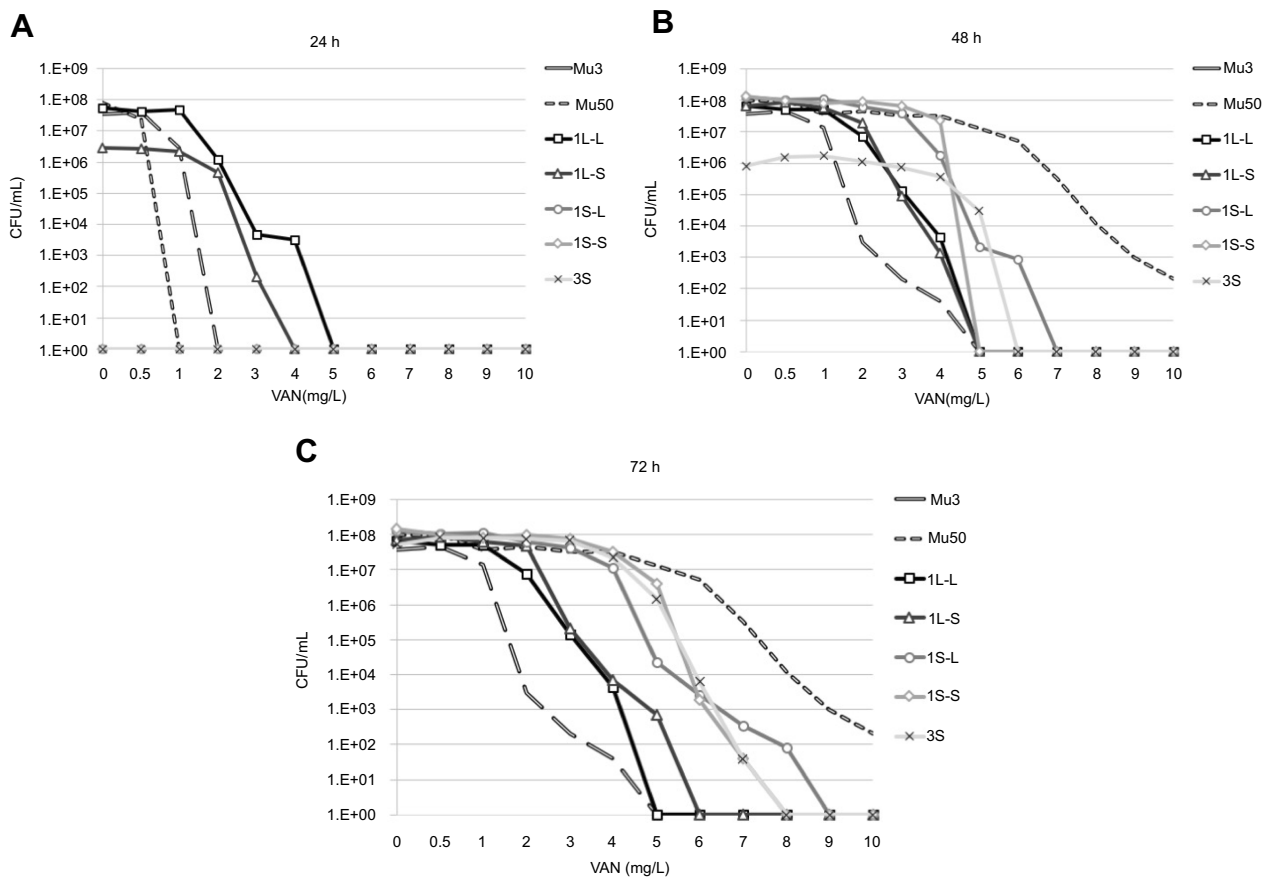
## Population analysis

The results of population analysis are shown in Figure 5. It is known that VISA strains, including strains Mu3 and Mu50, grow slowly. Therefore, colony counts for population analysis were conducted after 48 h incubation. The growth of all

five strains was confirmed on BHI agar plates with 4 mg/L VAN after 48 h incubation. The definition of hetero-VISA was satisfied, but these five strains were not VISA because the MICs were <4 mg/L. The population of strain 1L-L on agar plates containing various VAN concentrations did not change after 24, 48, and 72 h. The population of strains 1S-L, 1S-S, and 3S after 24 h incubation could not be counted because colonies of these strains were not observed after only 24 h incubation. The population of strains 1S-S and 3S were thus counted after 48 h, and changes were observed between 24, 48, and 72 h incubation. Notably, the population of strain 3S changed significantly, thus it is important for population analysis to be undertaken after over 72 h incubation.

## Genes implicated in the VAN intermediate phenotype in strain TMUS2136

The major genes implicated in the VAN intermediate phenotype in previous reports are listed in Table 2.<sup>21–25</sup> Compared with NC\_007793 (BAA1556/ST8/VSSA), amino acid changes were detected in *agrC*, *sarA*, and *trfB*; however, the sequences in *agrC* and *trfB* were the same as NC\_002745 (N315/ST5/VSSA). These data suggest that the SNPs in *agrC* and *trfB* were not associated with VAN resistance. Additionally, we confirmed the sequence of the *spdC* gene that is a novel virulence factor of *S. aureus*.<sup>26</sup> Compared with



**Figure 5** Population analysis of strains. The number of colonies on BHI agar plates containing various concentrations of vancomycin were counted after 24, 48, and 72 h of incubation at 35 °C.

**Abbreviations:** VAN, vancomycin; CFU, colony forming unit.

NC\_002745, deletion of the *spdC* gene in TUM2136 was confirmed. Expression of *spdC* is positively regulated by the *walkR* system and *spdC* negatively controls *walkR* regulon genes, thus deletion of *spdC* may be associated with VAN resistance.

## Mutations according to comparisons with the whole genome sequences mapping to reference strains

Comparing the whole genome sequences of the five strains obtained from strain TMUS2136 detected SNPs in only six genes (Table 3). SNPs in *mreC* and *hssS* were detected only in the strain 1L-L genome, while SNPs in *prs* were detected in the genomes of strains 1L-L and 1L-S. SNPs in *porB* were detected only in the 3S genome, while SNPs in *sun* were detected in the genomes of strains 1L-S, 1S-L, 1S-S, and 3S. SNPs in SA2339 were detected only in the 1S-L genome. Notably, strains 1L-L and 1L-S both had

SNPs in *prs*, compared with the slower growing strains including 1S-L, 1S-S, and 3S. Thus, *prs* may affect the growth rate, cell wall formulation, and VAN resistance of MRSA. The extremely slow growing strain 3S had SNPs in *porB*, which may have relevance to slow-VISA.

## Discussion

In this study, we demonstrated that strains with slower growth and smaller colony formation tended to be resistant to VAN. Several genes, such as *spdC* and *prs*, were detected as new genes implicated in VAN resistance and cell growth. Slow-VISA strains are extremely slow growing and need longer incubation times to observe colony formation. Therefore, it is difficult to isolate such strains and to analyze accurate antimicrobial susceptibility by standard methods according to the guidelines of the CLSI M7.<sup>27</sup>

Initially, an amino acid change in the *sarA* gene and a deletion of the *spdC* gene in VISA strain TUM2136 were

**Table 2** Genes associated with the VISA phenotype and nucleotide changes in genes of strain TMUS2136 compared with BAA1556 (NC\_007793)

ORF ID in NC_002745	Gene	Product	Change compared with NC_007793		
			Nucleotide (region in NC_007793)	Amino acid	Reference
SA1844	<i>agrA</i>	Accessory gene regulator A	None	-	21, 22
SA1843	<i>agrC</i>	Accessory gene regulator C	T2148597A*	Phe293Ile	22
SA1583	<i>rot</i>	Repressor of toxins Rot	None	-	21
SA0573	<i>sarA</i>	Accessory regulator A	<b>C678589T</b>	<b>Ala98Thr</b>	21
SA0641	<i>mgrA</i>	Hypothetical protein	None	-	21
SA1872	<i>rsbU</i>	Sigma B regulation protein RsbU	None	-	21, 22
SA0860	<i>yjbH</i>	Hypothetical protein	None	-	21
SA0018	<i>walk</i> ( <i>vicK</i> )	Sensor histidine kinase	None	-	21, 22
SA0017	<i>walR</i> ( <i>vicR</i> )	DNA-binding response regulator	None	-	21, 22
SA1702	<i>yvqF</i>	Hypothetical protein	None	-	21
SA1701	<i>vraS</i>	Sensor histidine kinase	None	-	21, 22
SA1700	<i>vraR</i>	DNA-binding response regulator	None	-	21
SA0616	<i>vraF</i>	ABC transporter ATP-binding protein	<b>T721388C</b>	None (174Leu)	21, 22
SA0617	<i>vraG</i>	ABC transporter permease	None	-	21, 22
SA0615	<i>graS</i>	Sensor histidine kinase	None	-	21, 22
SA0614	<i>graR</i>	DNA-binding response regulator	None	-	21, 22
SA2147	<i>tcaR</i>	Transcriptional regulator TcaR	None	-	22
SA2146	<i>tcaA</i>	Teicoplanin resistance associated membrane protein TcaA protein	None	-	22
SA2145	<i>tcaB</i>	Teicoplanin resistance associated membrane protein TcaB protein	<b>T2473564C</b>	None (272Val)	22
SA0500	<i>rpoB</i>	DNA-directed RNA polymerase subunit beta	None	-	21, 22
SA1390	<i>rpoD</i>	RNA polymerase sigma factor RpoD	None	-	22
SA1659	<i>prsA</i>	Foldase protein PrsA	None	-	21, 22
SA0980	<i>isdE</i>	Hypothetical protein, similar to ferrichrome ABC transporter	None	-	21, 22
SA1062	<i>stpI</i>	Protein phosphatase 2C domain-containing protein	None	-	21, 22
SA0723	<i>clpP</i>	ATP-dependent Clp protease proteolytic subunit	None	-	21
SA0857	<i>trfA</i>	Adaptor protein	None	-	21
SA0858	<i>trfB</i>	Hypothetical protein	A988832T*	stop86Leu	21
SA0598	<i>pbp4</i>	Penicillin binding protein 4	None	-	21, 22
SA0456	<i>spoVG</i>	Regulatory protein SpoVG	None	-	21, 22

**Note:** \*The sequence at this site was different from NC\_007773 (BAA1556), but the same as NC\_002745 (N315).

**Abbreviation:** VISA, vancomycin-intermediate *Staphylococcus aureus*.

confirmed by comparison with a reference strain. The *sarA* gene encodes an important protein, SarA, which positively regulates the *agr* gene and is associated with the expression of surface proteins, capsular polysaccharides, and toxins.<sup>28</sup> The *sarA* gene has been previously implicated as a VAN resistance gene.<sup>29</sup> It is highly likely that SNPs in *sarA* influence VAN resistance. Moreover, SpdC is a novel virulence factor reported in recent years, and negatively controls WalKR regulon genes.<sup>26</sup> Additionally, it is known

that the WalKR system is involved in controlling cell wall metabolism and is associated with VAN resistance. Therefore, it was hypothesized that the deletion of *spdC* affected the dynamics of WalKR and lead to VAN resistance.

Furthermore, a total of six SNPs were detected by comparing the genomes of the isolated strains and these may be associated with MRSA growth and resistance to VAN. The transmembrane protein MreC encoded by the

Table 3 Mutations according to comparisons with whole genome sequences mapping to N315 (NC\_002745)

ORF ID no. in NC_002745	Gene name	Gene product	Nucleotide change (region in NC_002745)	Amino acid change (Compaired with NC_002745)	Amino acid at each position					
					IL-L	IL-S	IS-L	IS-S	3S	
SA1475	<i>mreC</i>	Rod shape-determining protein MreC	A1682398T	Lys67*	Lys	Lys	Lys	Lys	Lys	Lys
SA2152	<i>hssS</i>	Heme sensor protein HssS	T2417714C	Met45Thr	Met	Met	Met	Met	Met	Met
SA0458	<i>pirs</i>	Ribose-phosphate pyrophosphokinase	G529109A	Gly182Ser	Gly	Ser	Gly	Gly	Gly	Gly
SA2339	SA2339	Antibiotic ABC transporter	G2625949A	Ala788Thr	Ala	Ala	Thr	Ala	Ala	Ala
SA1060	<i>sun</i>	Ribosomal RNA small subunit methyltransferase B	1199643^119-9644Ains	Arg140fs→stp	Arg	Prematu-restop	Prematu-restop	Prematu-restop	Prematu-restop	Prematu-restop
SA1132	SA1132	2-oxoglutarate ferredoxin oxidoreductase subunit beta	A1287355del	Asn151fs→stp	Asn	Asn	Asn	Asn	Asn	Prematu-re stop

*mreC* gene is thought to be required to maintain the shape of rod-shaped bacteria.<sup>30,31</sup> However, it has been reported that *mreC* is not essential in MRSA and does not affect cell morphology.<sup>32</sup> Similarly, HssS is part of the heme sensing system (HssRS) that controls the heme regulated transporter efflux pump (HrtAB), and it is unclear how it is associated with synthesis of the cell wall and VAN resistance.<sup>33</sup> The *prs* gene encodes ribose-phosphate pyrophosphokinase and it has been reported that a mutation in this gene causes daptomycin resistance.<sup>34</sup> The mechanism by which SA2339, *sun*, and SA1132 operate remains unclear because there are no reports regarding their association with VAN resistance or cell growth. Among the six genes, it was suggested that *prs* was most likely responsible for the cell growth rate and VAN susceptibility because SNPs in the *prs* gene were detected during comparison between strains 1L-S and 1S-L, which represent the borderline of VAN susceptibility. Furthermore, the SA1132 gene may be responsible for slow-VISA because SNPs in the SA1132 gene were confirmed only in strain 3S. Notably, an association between this gene and VAN resistance has not been reported previously.

Importantly, questions remain regarding why various sized colonies were purified from a single clone isolated from a single patient. This growth phenomenon regarding *S. aureus* has been reported upon previously, including the description of hetero-VISA and small colony variants; however, the mechanisms responsible were not clear. The “heterogeneity” of VISA is explained by population analysis, in which over 100 colonies were observed on 4 mg/L VAN agar plates inoculated with 10<sup>8</sup> bacteria after 48 h incubation.<sup>10</sup> This indicates that there are at least two types of strains present in the bacterial suspension from a single colony of an isolate, one of which is susceptible and the other is resistant. Critically, a single colony from a purified culture is generally believed to be formed by a pure single strain. This concept is widely accepted in microbiology; however, it does not support the idea of heterogeneity in VISA strains, with a single colony originally containing several types of strains. A concept that may explain the fact that a single colony from a strain includes several subtypes of strains is genetic mutation. If mutants emerge from a strain during the process of colony formation, the environment-compatible mutants may become predominant in that colony. Our hypothesis is that the TMUS2136 strain acquired VAN intermediate resistance because it was exposed to VAN in the host body. The mechanism of resistance was thickening of the cell wall

that resulted in slower cell division and cell growth. We think that this is the case for 3S strain. By analysis of colony forming units or bacterial suspensions, it was difficult to clarify whether the mechanism was colony heterogeneity or de novo mutation. However, SNPs in six genes were detected between the five strains in this study, and mutants could emerge either in the host body or during the process of purified incubation. To clarify the specific mechanisms, we need new methods that can observe a single bacterial cell and analyze each cell separately.

In clinical settings, there may be some cases where strains with various growth rates and/or antibiotic susceptibilities are isolated from a single source like the present case. In these cases, various sized colonies are observed and the smallest colonies are difficult to detect because larger colonies dominant as a result of their fast growth, which may mask the smaller colonies. Notably, a strain that requires over 24 h incubation for observation of colonies such as strain 3S cannot be detected under normal incubation conditions. This suggests that slower and more antibiotic-resistant strains are difficult to detect, thus it is necessary to consider longer incubations to detect the smaller colonies.

TMUS2136 strain is a ST8/SCC*mec* type IV/TSST-1 positive VISA strain that is the dominant Japanese CA-MRSA clone, also called CA-MRSA/J.<sup>18</sup> This type of clone has been isolated in not only community-associated settings, but also hospital-associated settings in Japan.<sup>19,20</sup> Notably, many such clones were isolated from bacteremia cases and were thought to be highly virulent strains. CA slow-VISA presents such a threat because of its high virulence, resistance to VAN, and difficulty of detection. Thus, we need to focus on preventing the emergence and spread of slow-VISA, especially CA slow-VISA.

There are several limitations to the present study. First, TMUS2136 strain was isolated from a patient two years after receiving initial VAN treatment, and MRSA isolates from the initial stage of the subdural abscess were not purified and stored. Therefore, its growth characteristics were not clarified and it is unclear when and why slow-VISA emerged. Notably, it is impossible to know what factors induced VAN resistance and resulted in the emergence of slow-VISA as various antimicrobial agents, including VAN, LZD, and MINO, were administered. Second, we did not directly prove the relationship between the genes detected in this study and VAN resistance using a gene knock-out strain. It was difficult to clarify whether the mechanism of diversity in a single colony was a result of colony

heterogeneity or de novo mutation, because purification and analysis of a single bacterial cell was not possible in our laboratory. If such technology were available, further investigations into the relationship between colony heterogeneity, VAN resistance, and gene mutations would be conducted.

In conclusion, we have demonstrated that SNPs in *sarA*, *prs*, or SA1132 and/or deletion of *spdC* may be implicated as a cause of VAN resistance and the slow growth of MRSA. Slower growing strains tend to be VAN resistant, so the smallest colonies (after a long incubation period) should be tested for antimicrobial susceptibility to detect VAN-resistant organisms. Importantly, overlooking VAN-resistant CA-MRSA may lead to severe infections and resistance to treatment. Therefore, it is necessary to establish a new method to detect slow-VISA and a new therapeutic strategy to combat it. Further investigations should be performed to clarify the mechanisms regulating cell growth and VAN resistance in MRSA.

## Ethics approval

Written informed consent was obtained from the patient's family for publication of this study.

## Acknowledgments

We thank Miki Matsuo, Yuki Katayama, and Keiichi Hiramatsu for their total support of this report. We thank Simon Teteris, PhD, from the Edanz Group, for editing the English text of a draft of this manuscript. This work was supported by a GlaxoSmithKline Japan Research Grant and also by grants provided by Takeda Science Foundation.

## Disclosure

Current affiliation for Tetsuya Matsumoto is at Department of Infectious Diseases, International University of Health and Welfare, Chiba, Japan. The authors report no conflicts of interest in this work.

## References

- Jevons MP. "Celbemom"-resistant staphylococci. *Br Med J*. 1961;1:124–125.
- Hiramatsu K. Molecular evolution of MRSA. *Microbiol Immunol*. 1995;39:531–543.
- Enright MC, Robinson DA, Randle G, et al. The evolutionary history of methicillin-resistant *Staphylococcus aureus* (MRSA). *Proc Natl Acad Sci U S A*. 2002;99:7687–7692. doi:10.1073/pnas.122108599
- CDC. Four pediatric deaths from community-acquired methicillin-resistant *Staphylococcus aureus*—minnesota and North Dakota, 1997–1999. *JAMA*. 1999;282:1123–1125.
- Deleo FR, Otto M, Kreiswirth BN, et al. Community-associated methicillin-resistant *Staphylococcus aureus*. *Lancet*. 2010;375:1557–1568. doi:10.1016/S0140-6736(09)61999-1
- Ferber D. Infectious disease. From pigs to people: the emergence of a new superbug. *Science*. 2010;329:1010–1011. doi:10.1126/science.329.5995.1010
- Hiramatsu K, Hanaki H, Ino T, et al. Methicillin-resistant *Staphylococcus aureus* clinical strain with reduced vancomycin susceptibility. *J Antimicrob Chemother*. 1997;40:135–136. doi:10.1093/jac/40.1.135
- Chang S, Sievert DM, Hageman JC, et al. Infection with vancomycin-resistant *Staphylococcus aureus* containing the vanA resistance gene. *N Engl J Med*. 2003;348:1342–1347. doi:10.1056/NEJMoa025025
- Sievert DM, Rudrik JT, Patel JB, et al. Vancomycin-resistant *Staphylococcus aureus* in the United States, 2002–2006. *Clin Infect Dis*. 2008;46:668–674.
- Howden BP, Davies JK, Johnson PD, et al. Reduced vancomycin susceptibility in *Staphylococcus aureus*, including vancomycin-intermediate and heterogeneous vancomycin-intermediate strains: resistance mechanisms, laboratory detection, and clinical implications. *Clin Microbiol Rev*. 2010;23:99–139. doi:10.1128/CMR.00042-09
- Howden BP, Peleg AY, Stinear TP. The evolution of vancomycin intermediate *Staphylococcus aureus* (VISA) and heterogeneous-VISA. *Infect Genet Evol*. 2014;21:575–582. doi:10.1016/j.meegid.2013.03.047
- Katayama Y, Azechi T, Miyazaki M, et al. Prevalence of slow-growth vancomycin nonsusceptibility in methicillin-resistant *Staphylococcus aureus*. *Antimicrob Agents Chemother*. 2017;61:pil: e00452-17.
- Matsuo M, Hishinuma T, Katayama Y, Hiramatsu K. A mutation of RNA polymerase  $\beta'$  subunit (RpoC) converts heterogeneously vancomycin-intermediate *Staphylococcus aureus* (hVISA) into "slow VISA". *Antimicrob Agents Chemother*. 2015;59:4215–4225. doi:10.1128/AAC.00135-15
- Kino H, Suzuki H, Yamaguchi T, et al. Central nervous system infection caused by vancomycin-intermediate *Staphylococcus aureus* (SCCmec type IV, ST8). *J Infect Chemother*. 2014;20:643–646. doi:10.1016/j.jiac.2014.06.008
- CLSI. *Performance Standards for Antimicrobial Susceptibility Testing; 27th Informational Supplement*. Wayne, PA: CLSI document M100-S27 Clinical and Laboratory Standards Institute; 2017.
- Matsuo M, Hishinuma T, Katayama Y, et al. Mutation of RNA polymerase beta subunit (rpoB) promotes hVISA-to-VISA phenotypic conversion of strain Mu3. *Antimicrob Agents Chemother*. 2011;55:4188–4195. doi:10.1128/AAC.00398-11
- Kaya H, Hasman H, Larsen J, et al. scemecfinder, a web-based tool for typing of staphylococcal cassette chromosome mec in *Staphylococcus aureus* using whole-genome sequence data. *mSphere*. 2018;3:pil: e00612-e00617.
- Iwao Y, Ishii R, Tomita Y, et al. The emerging ST8 methicillin-resistant *Staphylococcus aureus* clone in the community in Japan: associated infections, genetic diversity, and comparative genomics. *J Infect Chemother*. 2012;18:228–240. doi:10.1007/s10156-012-0379-6
- Yamaguchi T, Okamura S, Miura Y, et al. molecular characterization of community-associated methicillin-resistant *Staphylococcus aureus* isolated from skin and pus samples of outpatients in Japan. *Microb Drug Resist*. 2015;21:441–447. doi:10.1089/mdr.2014.0153
- Miura Y, Yamaguchi T, Nakamura I, et al. Epidemiological trends observed from molecular characterization of methicillin-resistant *Staphylococcus aureus* isolates from blood cultures at a Japanese university hospital, 2012–2015. *Microb Drug Resist*. 2018;24:70–75. doi:10.1089/mdr.2017.0008
- McGuinness WA, Malachowa N, DeLeo FR. Vancomycin resistance in *Staphylococcus aureus*. *Yale J Biol Med*. 2017;90:269–281.
- Rishishwar L, Petit RA 3rd, Kraft CS, et al. Genome sequence-based discriminator for vancomycin-intermediate *Staphylococcus aureus*. *J Bacteriol*. 2014;196:940–948. doi:10.1128/JB.01410-13

23. Herbert S, Bera A, Nerz C, et al. Molecular basis of resistance to muramidase and cationic antimicrobial peptide activity of lysozyme in staphylococci. *PLoS Pathog.* 2007;3:e102. doi:10.1371/journal.ppat.0030102
24. Hafer C, Lin Y, Kornblum J, et al. Contribution of selected gene mutations to resistance in clinical isolates of vancomycin-intermediate *Staphylococcus aureus*. *Antimicrob Agents Chemother.* 2012;56:5845–5851. doi:10.1128/AAC.01139-12
25. Matsuo M, Cui L, Kim J, et al. Comprehensive identification of mutations responsible for hVISA-to-VISA conversion in laboratory-generated VISA strains from hVISA clinical strain Mu3. *Antimicrob Agents Chemother.* 2013. doi:10.1128/AAC.00425-13.
26. Poupel O, Proux C, Jagla B, et al. SpdC, a novel virulence factor, controls histidine kinase activity in *Staphylococcus aureus*. *PLoS Pathog.* 2018;14:e1006917. doi:10.1371/journal.ppat.1006917
27. CLSI. *Methods for Dilution Antimicrobial Susceptibility Tests for Bacteria that Grow Aerobically*. 10th ed. Wayne, PA: CLSI document M7-A10 Clinical and Laboratory Standards Institute; 2017.
28. Reyes D, Andrey DO, Monod A, et al. Coordinated regulation by AgrA, SarA, and SarR to control agr expression in *Staphylococcus aureus*. *J Bacteriol.* 2011;193:6020–6031. doi:10.1128/JB.05436-11
29. Trotonda MP, Xiong YQ, Memmi G, et al. Role of mgrA and sarA in methicillin-resistant *Staphylococcus aureus* autolysis and resistance to cell wall-active antibiotics. *J Infect Dis.* 2009;199:209–218. doi:10.1086/595740
30. Carballido-Lopez R, Formstone A. Shape determination in *Bacillus subtilis*. *Curr Opin Microbiol.* 2007;10:611–616. doi:10.1016/j.mib.2007.09.008
31. Divakaruni AV, Loo RR, Xie Y, et al. The cell-shape protein MreC interacts with extracytoplasmic proteins including cell wall assembly complexes in *Caulobacter crescentus*. *Proc Natl Acad Sci U S A.* 2005;102:18602–18607. doi:10.1073/pnas.0507937102
32. Tavares AC, Fernandes PB, Carballido-Lopez R, et al. MreC and MreD proteins are not required for growth of *Staphylococcus aureus*. *PLoS One.* 2015;10:e0140523. doi:10.1371/journal.pone.0140523
33. Stauff DL, Torres VJ, Skaar EP. Signaling and DNA-binding activities of the *Staphylococcus aureus* HssR-HssS two-component system required for heme sensing. *J Biol Chem.* 2007;282:26111–26121. doi:10.1074/jbc.M703797200
34. Song Y, Rubio A, Jayaswal RK, et al. Additional routes to *Staphylococcus aureus* daptomycin resistance as revealed by comparative genome sequencing, transcriptional profiling, and phenotypic studies. *PLoS One.* 2013;8:e58469. doi:10.1371/journal.pone.0058469

## Infection and Drug Resistance

Dovepress

### Publish your work in this journal

Infection and Drug Resistance is an international, peer-reviewed open-access journal that focuses on the optimal treatment of infection (bacterial, fungal and viral) and the development and institution of preventive strategies to minimize the development and spread of resistance. The journal is specifically concerned with the epidemiology of

antibiotic resistance and the mechanisms of resistance development and diffusion in both hospitals and the community. The manuscript management system is completely online and includes a very quick and fair peer-review system, which is all easy to use. Visit <http://www.dovepress.com/testimonials.php> to read real quotes from published authors.

Submit your manuscript here: <https://www.dovepress.com/infection-and-drug-resistance-journal>