

Overall survival of driver mutation-negative non-small cell lung cancer patients with COPD under chemotherapy compared to non-COPD non-small cell lung cancer patients

Jeong Uk Lim
 Chang Dong Yeo
 Chin Kook Rhee
 Yong Hyun Kim
 Chan Kwon Park
 Ju Sang Kim
 Jin Woo Kim
 Seung Joon Kim
 Hyoung Kyu Yoon
 Sang Haak Lee

Division of Pulmonology and
 Critical Care Medicine, Department
 of Internal Medicine, College of
 Medicine, The Catholic University of
 Korea, Seoul, Republic of Korea

Objectives: Focusing on the advanced non-small cell lung cancer (NSCLC) patients without driver mutations can elucidate the clinical impact of COPD on treatment outcomes. The present study evaluated the effects of COPD on the overall survival of driver mutation-negative NSCLC patients undergoing conventional chemotherapy as the first-line treatment.

Patients and methods: Medical records of stage IIIB and IV NSCLC patients from January 2008 to December 2015 from six university hospitals were reviewed.

Results: The total study population consisted of 197 patients; 92 (46.7%) were COPD patients and 105 (53.3%) were non-COPD patients. The median survival in the non-COPD group was 11.5 months, compared to 9.2 months in the COPD group. Univariate analysis showed that old age (>70 years), high Eastern Cooperative Oncology Group status score (2–3), squamous cell histology, and COPD were risk factors for mortality. The presence of COPD was a significant prognostic factor in univariate analysis (hazard ratio [HR], 1.402; $p=0.037$), but not in multivariate analysis (HR, 1.275; $p=0.144$). Subgroup analysis of 143 smokers showed that COPD was a significant prognostic factor on multivariate analysis (HR, 1.726; $p=0.006$). In 154 stage IV patients, COPD was also a prognostic factor in multivariate analysis (HR, 1.479; $p=0.039$).

Conclusion: COPD had a negative impact on overall survival in the stage IV NSCLC and smoker NSCLC patients who underwent conventional chemotherapy.

Keywords: non-small cell lung cancer, chronic obstructive pulmonary disease, smoker, overall survival

Introduction

Lung cancer is a leading cause of death worldwide.^{1,2} Lung cancer and chronic obstructive pulmonary disease (COPD) are interrelated diseases, and several epidemiological studies have shown that patients with COPD have an increased risk of developing lung cancer.^{3–6} The prevalence of COPD was reported to be 40%–70% in lung cancer patients, and COPD is a significant risk factor for the development of lung cancer.^{7,8} Furthermore, COPD and emphysema were reported to be independent risk factors for the development of lung cancer.^{6,9}

The results of previous studies regarding the impact of COPD on the prognosis of lung cancer were inconclusive. Gao et al's recent meta-analysis of 26 papers showed that COPD and emphysema were predictors of poor survival in patients with lung cancer, with poorer overall survival in lung cancer patients with COPD.¹⁰

Correspondence: Ju Sang Kim
 Division of Pulmonology and
 Critical Care Medicine, Department
 of Internal Medicine, College of
 Medicine, The Catholic University of
 Korea, Incheon St. Mary's Hospital,
 Incheon, Bupyeong-gu, Bupyeong
 Dong, Dongsu-ro, 56 (21431),
 Republic of Korea
 Tel +82 32 280 5866
 Fax +82 32 280 5196
 Email kimjusang@catholic.ac.kr

A study by Izquierdo et al showed that COPD did not influence overall survival in cases of advanced lung cancer.¹¹ Negative effects of COPD on the postoperative outcomes of early lung cancer patients undergoing lobectomy have been reported.^{12,13} Several previous studies showed that COPD was not a prognostic factor for overall survival in non-small cell lung cancer (NSCLC) patients.^{14–17}

Most previous studies evaluating the correlation between COPD and lung cancer were performed in populations who were heterogeneous in terms of lung cancer stage and treatment modalities.^{16,18} Technical developments over the past decade have afforded options for targeted therapy of NSCLC patients, and median survival is longer in NSCLC patients with driver mutations compared to those without such mutations.¹⁹ However, the proportion of patients positive for driver mutations is relatively small, and conventional chemotherapy, mostly platinum-based regimens, is still the mainstay first-line treatment for advanced NSCLC.^{20,21}

The impact of COPD on the outcomes of patients with advanced lung cancer could vary by the proportion of patients with driver mutations, the proportion receiving targeted therapy, and the proportion with advanced lung cancer. Furthermore, few studies have focused on advanced NSCLC patients undergoing conventional chemotherapy. In this regard, evaluating the influence of COPD on the outcome of NSCLC patients undergoing conventional chemotherapy, after excluding the patients positive for driver mutations, could elucidate the clinical impact of COPD on the treatment of advanced NSCLC. This study was performed to evaluate the effects of COPD on the overall survival of NSCLC patients undergoing conventional chemotherapy as the first-line treatment.

Patients and methods

Patient selection

Advanced lung cancer patients (stage IIIB and IV), diagnosed with NSCLC between January 2008 and December 2015, were selected among the records of six university hospitals: Seoul St Mary's Hospital, Yeouido St Mary's Hospital, Incheon St Mary's Hospital, Bucheon St Mary's Hospital, St Paul's Hospital, and Uijeongbu St Mary's Hospital. Patients who underwent a baseline pulmonary function test were included in this study.

This evaluation focused on patients with advanced NSCLC at diagnosis who did not undergo surgery. Patients with stage I, II, and IIIA NSCLC were excluded. Furthermore, patients who underwent stereotactic body radiation therapy or targeted therapy, such as erlotinib, gefitinib, or crizotinib, as the first-line treatment were also

excluded. Patients with epidermal growth factor receptor (EGFR) and anaplastic lymphoma kinase (ALK) mutations were also excluded. Patients who underwent conventional chemotherapy as the first-line treatment for lung cancer, and who did not meet the above exclusion criteria, were included in the study. The 7th American Joint Committee on Cancer tumor, node, metastasis classification was used to stage the lung cancer.

The median follow-up duration for surviving patients was 23.9 months (range: 6.1–68.0 months), and the median survival time of censored patients was 7.8 months (range: 1.1–87.9 months).

Chemotherapy

First-line chemotherapy included cisplatin or carboplatin in combination with one of the following agents: pemetrexed (nonsquamous histology), vinorelbine, gemcitabine, or paclitaxel. Patients who received pemetrexed maintenance therapy after induction by the same agent were included in the study. Patients' age, performance status, and underlying disease were also taken into consideration with respect to selection of the chemotherapy regimen. Physicians carefully observed the toxicity of chemotherapy, and the regimens were changed or stopped if toxicity occurred. Adverse events (AEs) were evaluated according to the National Cancer Institute Common Terminology Criteria for Adverse Events, NCICTC 3.0.²² In the event of a grade 3 AE, the dose was reduced until it had dropped to grade 0 or 1, and the treatment was restarted at one dose level lower. The dose was adjusted if any of the following AEs occurred: 1) absolute neutrophil count nadir $<500/\text{mm}^3$ for 4 days or more; 2) neutropenia with fever; 3) thrombocytopenia with a bleeding event or requirement for platelet transfusion; 4) platelet nadir $<50,000/\text{mm}^3$ for 4 days or more; or 5) grade 3 or higher non-hematological toxicity, except nausea, vomiting, or alopecia.

Definition of COPD and spirometric values as prognostic factors

COPD was defined according to the Global Initiative for Chronic Obstructive Lung Disease (GOLD) guidelines: forced expiratory volume in 1 s (FEV_1)/forced vital capacity (FVC) <0.7 . Morris reference equation, which is widely used in Asian population, was used to calculate the normal predictive values for spirometric data.²³

Statistical analysis

Comparison of continuous variables between the COPD and non-COPD groups was performed by the unpaired *t*-test.

Pearson's χ^2 test was used to compare categorical variables between the two groups.

Kaplan–Meier survival curves were used to evaluate the overall survival of patients with lung cancer, and differences were assessed by the log-rank test. The follow-up time for survival analysis was defined as the time (in months) from diagnosis of lung cancer to the date of death or the date of the last outpatient visit. Independent risk factors for mortality were analyzed using a Cox proportional hazards regression model after adjustment for confounding variables. All variables analyzed using a Cox regression model were independent variables.

Only variables that were statistically significant in univariate analysis were entered into the multivariate analysis. Both univariate and multivariate analyses of overall survival are performed using Cox regression model. Hazard ratios (HRs) and 95% confidence intervals (95% CIs) were estimated. Subgroup analyses of never-smokers and patients with stage IIIB cancer were not performed due to the small numbers of patients. For all tests, $p < 0.05$ was considered to indicate statistical significance. Statistical analyses were performed using SPSS for Windows software (ver. 18.0; SPSS Inc., Chicago, IL, USA).

Ethics statement

The study was approved by the ethics committee at each center (XC16RIMI0084P). The requirement for informed consent was waived due to the retrospective nature of the data. All the data accessed was de-identified.

Results

Demographic and clinical characteristics

The total study population consisted of 197 patients; 92 (46.7%) were in the COPD group and 105 (53.3%) were in the non-COPD group. Table 1 shows the comparison of clinicopathological parameters between the two groups. The mean age of the COPD group patients was 69.5 ± 9.4 years and that of the non-COPD group was 64.7 ± 10.4 years ($p = 0.001$). The proportion of male patients was significantly higher in the COPD group (85.9%) than in the non-COPD group ($p = 0.002$). The percentage of ever-smokers was significantly higher in the COPD group than in the non-COPD group (81.5% vs 64.8%, respectively; $p = 0.009$).

The proportion of patients with stage IV cancer was higher than stage IIIB in both the groups; however, there were no significant differences in disease stage between the two groups. More patients had Eastern Cooperative Oncology Group (ECOG) performance status scores 0 or 1 in the non-COPD group compared to the COPD group, but the difference was not

Table 1 Baseline clinical characteristics of the study patients

	Non-COPD (n=105) (n, %)	COPD (n=92) (n, %)	p-value
Sex			
Male	70 (66.7)	79 (85.9)	0.002
Age (years)	64.7 ± 10.4	69.5 ± 9.4	0.001
Stage			0.235
IIIB	21 (20.0)	25 (27.2)	
IV	84 (80.0)	67 (72.8)	
BMI (kg/m ²)	22.9 ± 3.6	23.1 ± 3.2	0.747
Smoking			0.009
Never-smoker	37 (35.2)	17 (18.5)	
Ever-smoker	68 (64.8)	75 (81.5)	
ECOG			0.515
0–1	85 (81.0)	71 (77.2)	
2–3	20 (19.0)	21 (22.8)	
Pathology			0.001
Squamous	24 (22.9)	46 (50.0)	
Non-squamous	81 (77.1)	46 (50.0)	
FEV ₁ (L)	2.18 ± 0.91	1.76 ± 0.61	<0.001
FEV ₁ (% predicted)	87.93 ± 21.70	71.55 ± 21.97	<0.001
FVC (L)	2.78 ± 0.91	3.08 ± 1.04	0.118
FVC (% predicted)	82.10 ± 20.54	86.84 ± 21.82	0.029
FEV ₁ /FVC (% predicted)	77.39 ± 6.11	57.65 ± 9.19	<0.001
DLCO (abs)	16.43 ± 15.87	16.65 ± 16.22	0.926
DLCO (%)	76.19 ± 20.99	73.38 ± 20.89	0.400

Abbreviations: Abs, absolute; BMI, body mass index; COPD, chronic obstructive pulmonary disease; DLCO, diffusing capacity of the lung for carbon monoxide; ECOG, Eastern Cooperative Oncology Group; FEV₁, forced expiratory volume in 1 s; FVC, forced vital capacity.

significant ($p = 0.515$). The proportion of squamous carcinoma was significantly higher in the COPD group than in the non-COPD group (50% vs 22.9%, respectively; $p = 0.001$).

The mean absolute FEV₁ and predicted percentage of FEV₁ were 1.76 ± 0.61 L and $71.55 \pm 21.97\%$ in the COPD group, respectively; the respective values in the non-COPD group were 2.18 ± 0.91 L and $87.93 \pm 21.70\%$ ($p = 0.001$).

Prognostic factors for survival in the study population

Univariate analysis showed that older age (>70 years), high ECOG score (2–3), squamous cell histology, and COPD (Figure 1) were significant. In multivariate analysis, poor ECOG performance status score and histology were significant prognostic factors; however, the presence of COPD was not (HR, 1.275, 95% CI, 0.884–1.719; $p = 0.144$). The median survival period of non-COPD patients was 11.5 months, compared to 9.2 months in the COPD group (Table 2).

Subgroup analysis

Ever-smoker

Subgroup analysis of 143 smokers showed that COPD, poor ECOG, and old age were significant in univariate analysis

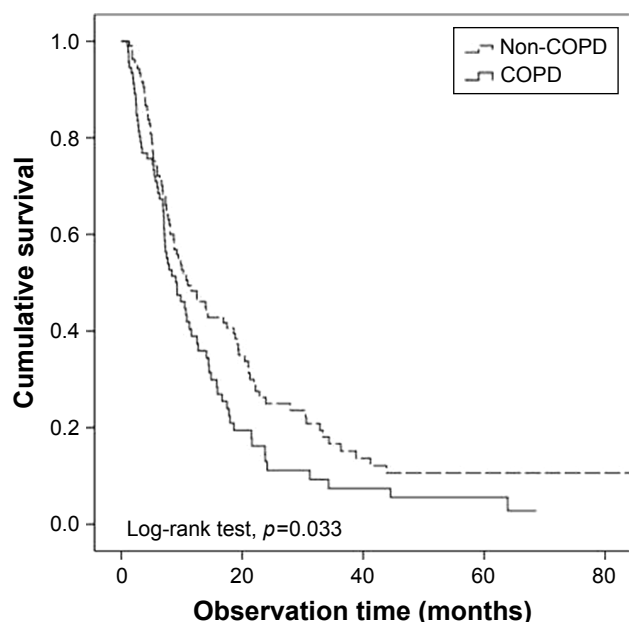


Figure 1 Overall survival of non-small cell lung cancer patients: COPD group versus non-COPD group.

Abbreviation: COPD, chronic obstructive pulmonary disease.

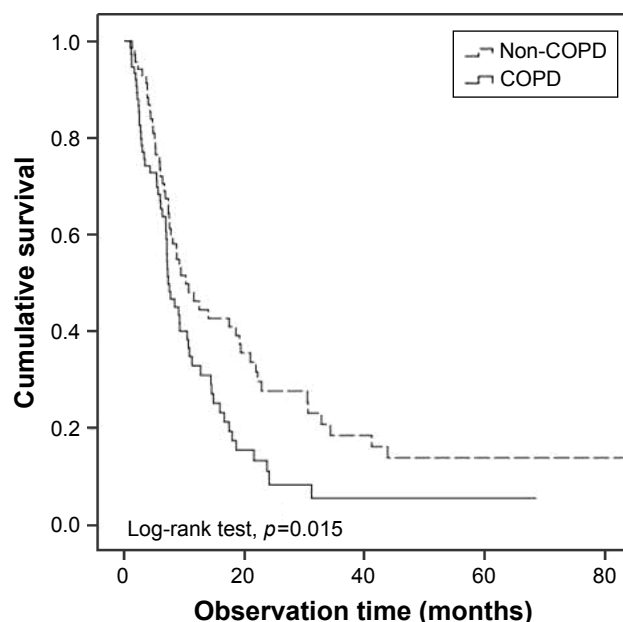


Figure 2 Overall survival of non-small cell lung cancer patients according to the presence of COPD in smoker patients.

Abbreviation: COPD, chronic obstructive pulmonary disease.

Table 2 Univariate analysis of clinical variables affecting overall survival of the patients

Parameter	Hazard ratio	95% confidence interval	Median survival (months)	p-value
Sex				0.371
Male	1.188	0.819–1.710	8.7	
Female	1		14.3	
ECOG				<0.001
0–1	1		11.5	
2–3	2.337	1.587–3.441	5.4	
Age (years)				0.023
≤70	1		11.6	
>70	1.461	1.058–2.018	7.3	
Stage				0.757
IIIB	1.060	0.732–1.535	8.4	
IV	1		10.7	
BMI (kg/m ²)				0.623
<23	1.083	0.787–1.492	9.2	
≥23	1		10.8	
COPD				0.037
None	1		11.5	
Yes	1.402	1.020–1.927	9.2	
Smoking				0.398
None	1		13.9	
Yes	1.161	0.821–1.640	8.7	
Histology				0.004
Squamous	1.641	1.173–2.295	7.8	
Non-squamous	1		12.5	

Abbreviations: BMI, body mass index; ECOG, Eastern Cooperative Oncology Group; COPD, chronic obstructive pulmonary disease.

(Figure 2). In multivariate analysis, COPD (HR, 1.726, 95% CI, 1.170–2.540; $p=0.006$) and poor ECOG (HR, 2.271; $p<0.001$) were significant prognostic factors (Table 3).

Stage IV cancer

Among the 197 patients included in this study, 154 were diagnosed with stage IV cancer. In univariate analysis, COPD was significant (HR, 1.530, 95% CI, 1.054–2.222; $p=0.025$) (Figure 3) along with ECOG and old age. COPD was a prognostic factor (HR, 1.479, 95% CI, 1.020–2.145; $p=0.039$), along with ECOG, in multivariate analysis (Table 4).

Discussion

The results of the present study indicated that COPD does not have a clinical impact on overall survival in driver mutation-negative NSCLC patients undergoing conventional chemotherapy. However, COPD was a significant prognostic factor in the smoker and stage IV cancer subgroups. From the previous studies, few reports have suggested that the mortality rate of lung cancer is higher among patients with prior COPD compared to non-COPD lung cancer patients.^{10,24} However, specifically for NSCLC subtype, studies on the impact of COPD on the survival of cancer patients presented inconclusive results. While the presence of emphysema affects the overall survival of patients,¹⁴ COPD was not a prognostic factor in advanced NSCLC patients with significant smoking experiences.¹⁶

Table 3 Univariate and multivariate analyses of prognostic factors for overall survival in smokers (n=154)

Parameter	Univariate analysis			Multivariate analysis		
	Hazard ratio	95% confidence interval	p-value	Hazard ratio	95% confidence interval	p-value
Presence of COPD			0.019			0.006
COPD	1.585	1.080–2.327		1.726	1.170–2.54	
Non-COPD	1			1		
Male	1.443	0.876–2.379	0.150			
ECOG			0.001			<0.001
0–1	1			1		
2–3	2.303	1.433–3.702		2.602	1.603–4.221	
Squamous	1.567	1.067–2.302	0.022	1.316	0.881–1.964	0.180
Age (years)			0.009			0.144
≤70	1			1		
>70	1.667	1.134–2.448		1.355	0.902–2.036	
Stage			0.543			
IIIB	1					
IV	0.877	0.576–1.337				
BMI (kg/m ²)			0.929			
<23	1.017	0.696–1.488				
≥23	1					

Abbreviations: COPD, chronic obstructive pulmonary disease; ECOG, Eastern Cooperative Oncology Group; BMI, body mass index; FEV₁, forced expiratory volume in 1 s; FVC, forced vital capacity.

In this study, we focused on advanced NSCLC patients who underwent conventional chemotherapy as first-line treatment, as most patient populations in previous studies were heterogeneous in terms of cancer stage or treatment modality,^{16,25} or focused on early lung cancer requiring surgery.^{13,26,27} Furthermore, NSCLC patients with driver

mutations were also excluded as prognosis can differ between patients undergoing targeted therapy versus those who did not.¹⁹ COPD-related NSCLC cases show a low prevalence of EGFR and ALK mutations compared to non-COPD patients,²⁸ and targeted therapy can influence patient outcomes.

COPD was a significant prognostic factor in the smoker subgroup, but not in the overall patient population (which included 54 never-smokers). COPD is an obstructive lung disease that is closely associated with tobacco smoking;²⁹ we believe that the impact of COPD on overall survival would be much more clear after excluding never-smokers from the analysis. A previous study on the impact of COPD in NSCLC patients with a smoking history showed shorter overall survival of COPD patients compared to their non-COPD counterparts, although the difference was not statistically significant.¹⁶ COPD patients with more than 10 years of tobacco smoking history experience more rapid decline of lung function, compared to never-smokers.^{30,31} We assume that the decline of lung function and associated frequent exacerbations of COPD would make patients less tolerable to active anticancer treatment.^{32,33}

Furthermore, COPD significantly influenced overall survival in the stage IV cancer patients. Although not shown in the results, the proportion of squamous cell carcinoma was higher in the stage IIIB group (51.4%) than in the stage IV group (31.1%) with statistical significance ($p=0.005$). Compared to

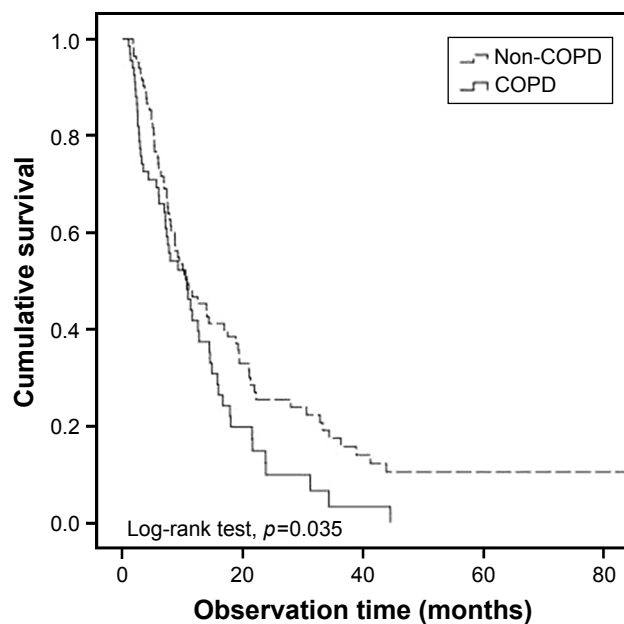


Figure 3 Overall survival of non-small cell lung cancer patients according to the presence of COPD in stage IV non-small cell lung cancer patients.

Abbreviation: COPD, chronic obstructive pulmonary disease.

Table 4 Univariate and multivariate analyses of prognostic factors for overall survival in stage IV NSCLC patients (n=151)

Parameter	Univariate analysis			Multivariate analysis		
	Hazard ratio	95% confidence interval	p-value	Hazard ratio	95% confidence interval	p-value
Presence of COPD			0.025			0.039
COPD	1.530	1.054–2.222		1.479	1.020–2.145	
Non-COPD	1			1		
Male	1.103	0.741–1.641	0.630			
ECOG			<0.001			<0.001
0–1	1			1		
2–3	2.335	1.507–3.617		2.271	1.466–3.519	
Squamous	1.365	0.916–2.035	0.126			
Age (years)			0.012			0.189
≤70	1			1		
>70	1.616	1.113–2.348		1.306	0.877–1.944	
Smoker	1.080	0.735–1.588	0.694			
BMI (kg/m ²)			0.737			
<23	0.939	0.649–1.358				
≥23	1					

Abbreviations: COPD, chronic obstructive pulmonary disease; ECOG, Eastern Cooperative Oncology Group; BMI, body mass index; NSCLC, non-small cell lung cancer.

adenocarcinoma type, squamous cell lung cancer is more centrally located.³⁴ Central airway invasion can lead to localized airway obstruction, which can in turn be diagnosed as COPD from initial spirometry tests. However, airway obstruction is one among the many characteristic features of COPD. The proinflammatory microenvironment and progressive decline of lung function, which are other characteristic features of COPD,³⁵ would render lung cancer treatment more difficult.³⁶ After excluding the stage IIIB cancer patients, a separate analysis of the stage IV cancer patients would have better reflected the impact of COPD on the overall survival of NSCLC patients.

Although not a significant prognostic factor for overall patient population in multivariate analysis, COPD was a statistically significant prognostic factor in the smoker and stage IV subgroups. It may not be a powerful prognostic factor as ECOG performance status, histology, or cancer stage, but our study results suggested that it has an indirect negative impact on the overall survival of advanced NSCLC patients. First, we assume that lung cancer with COPD is a different phenotype, which shows a more aggressive course compared to non-COPD lung cancer. In addition to the effect of smoking, COPD may have other characteristics associated with the mortality of lung cancer. A prospective study on never-smokers showed that prior physician-diagnosed emphysema was significantly associated with lung cancer mortality.³⁷ Chronic inflammation in COPD results in increased DNA damage, which leads to a greater probability of lung carcinogenesis,^{38,39} and the proinflammatory

microenvironment of COPD makes treatment of lung cancer more difficult.³⁶ Second, the presence of COPD is associated with other comorbidities, such as cardiovascular diseases, which can affect patient survival.⁴⁰ A recent study in Denmark indicated that cardiovascular comorbidity was a significant comorbidity in NSCLC patients, along with diabetes and COPD.²⁵ Finally, AEs associated with chemotherapy are more likely to develop in NSCLC patients with emphysematous lungs. Tamiya et al reported that NSCLC patients with emphysematous lungs are 4.95 times more likely to develop interstitial lung disease associated with docetaxel when compared to patients without this change.⁴¹

The study had some limitations. First, only a small number of patients with severe COPD were included in the analysis. More than 70% of study patients had an ECOG performance status of 0–1, and the patients with severe airway outflow limitations tended to receive supportive care. Less than 10% of patients were of GOLD grade 3–4 (results not shown). However, the majority of lung cancer patients with COPD have mild to moderate airway obstruction,⁴² so the evaluation of the clinical impact of COPD would not be significantly influenced by the paucity of cases of severe COPD. Second, we did not identify other comorbidities. Cardiovascular disease, which frequently accompanies COPD, may have contributed to decreased overall survival among the patients with COPD in our study population. Third, natural aging could have contributed to diagnosis of COPD among elderly patients. Using a fixed ratio for the definition of airflow limitation is presumed to be inducing overdiagnosis among

older individuals.⁴³ Finally, the location and size of the lung mass were not described. COPD defined as $FEV_1/FVC < 70\%$ may reflect lung cancer burden and the involvement of the central airway can be reflected in a decrease in FEV_1 .

Although the direct impact of COPD could not be determined, the results presented here suggest that the impact of COPD cannot be ignored in advanced NSCLC patients undergoing conventional chemotherapy especially in smoker and stage IV patients.

Conclusion

COPD was not a significant prognostic factor for advanced NSCLC patients. However, COPD had a negative impact on the overall survival of the NSCLC patients in the smoker and stage IV subgroups. Further studies with larger study population are required to clarify the impact of COPD in both stage IV and smoker NSCLC patients under active lung cancer treatment.

Disclosure

The authors report no conflicts of interest in this work.

References

- Jemal A, Bray F, Center MM, Ferlay J, Ward E, Forman D. Global cancer statistics. *CA Cancer J Clin*. 2011;61(2):69–90.
- McErlean A, Ginsberg MS. Epidemiology of lung cancer. *Semin Roentgenol*. 2011;46(3):173–177.
- Wasswa-Kintu S, Gan WQ, Man SF, Pare PD, Sin DD. Relationship between reduced forced expiratory volume in one second and the risk of lung cancer: a systematic review and meta-analysis. *Thorax*. 2005;60(7):570–575.
- Wilson DO, Weissfeld JL, Balkan A, et al. Association of radiographic emphysema and airflow obstruction with lung cancer. *Am J Respir Crit Care Med*. 2008;178(7):738–744.
- Powell HA, Iyen-Omofoman B, Baldwin DR, Hubbard RB, Tata LJ. Chronic obstructive pulmonary disease and risk of lung cancer: the importance of smoking and timing of diagnosis. *J Thorac Oncol*. 2013;8(4):e34–e35.
- Smith BM, Pinto L, Ezer N, Sverzellati N, Muro S, Schwartzman K. Emphysema detected on computed tomography and risk of lung cancer: a systematic review and meta-analysis. *Lung Cancer*. 2012;77(1):58–63.
- Loganathan RS, Stover DE, Shi W, Venkatraman E. Prevalence of COPD in women compared to men around the time of diagnosis of primary lung cancer. *Chest*. 2006;129(5):1305–1312.
- Buist AS, McBurnie MA, Vollmer WM, et al. International variation in the prevalence of COPD (the BOLD Study): a population-based prevalence study. *Lancet*. 2007;370(9589):741–750.
- Wang H, Yang L, Zou L, et al. Association between chronic obstructive pulmonary disease and lung cancer: a case-control study in Southern Chinese and a meta-analysis. *PLoS One*. 2012;7(9):e46144.
- Gao YH, Guan WJ, Liu Q, et al. Impact of COPD and emphysema on survival of patients with lung cancer: a meta-analysis of observational studies. *Respirology*. 2016;21(2):269–279.
- Izquierdo JL, Resano P, El Hachem A, Graziani D, Almonacid C, Sanchez IM. Impact of COPD in patients with lung cancer and advanced disease treated with chemotherapy and/or tyrosine kinase inhibitors. *Int J Chron Obstruct Pulmon Dis*. 2014;9:1053–1058.
- Bugge A, Lund MB, Brunborg C, Solberg S, Kongerud J. Survival after surgical resection for lung cancer in patients with chronic obstructive pulmonary disease. *Ann Thorac Surg*. 2016;101(6):2125–2131.
- Yoshida Y, Kage H, Murakawa T, et al. Worse prognosis for stage IA lung cancer patients with smoking history and more severe chronic obstructive pulmonary disease. *Ann Thorac Cardiovasc Surg*. 2015;21(3):194–200.
- Gullon JA, Suarez I, Medina A, Rubinos G, Fernandez R, Gonzalez I. Role of emphysema and airway obstruction in prognosis of lung cancer. *Lung Cancer*. 2011;71(2):182–185.
- Ueda K, Jinbo M, Li TS, Yagi T, Suga K, Hamano K. Computed tomography-diagnosed emphysema, not airway obstruction, is associated with the prognostic outcome of early-stage lung cancer. *Clin Cancer Res*. 2006;12(22):6730–6736.
- Lee SJ, Lee J, Park YS, et al. Impact of chronic obstructive pulmonary disease on the mortality of patients with non-small-cell lung cancer. *J Thorac Oncol*. 2014;9(6):812–817.
- Omote N, Hashimoto N, Morise M, et al. Impact of mild to moderate COPD on feasibility and prognosis in non-small cell lung cancer patients who received chemotherapy. *Int J Chron Obstruct Pulmon Dis*. 2017;12:3541–3547.
- Huang JY, Jian ZH, Ndi Nfor O, et al. The impact of coexisting asthma, chronic obstructive pulmonary disease and tuberculosis on survival in patients with lung squamous cell carcinoma. *PLoS One*. 2015;10(7):e0133367.
- Kris MG, Johnson BE, Berry LD, et al. Using multiplexed assays of oncogenic drivers in lung cancers to select targeted drugs. *JAMA*. 2014;311(19):1998–2006.
- Souquet PJ, Chauvin F, Boissel JP, et al. Polychemotherapy in advanced non small cell lung cancer: a meta-analysis. *Lancet*. 1993;342(8862):19–21.
- Non-small Cell Lung Cancer Collaborative Group. Chemotherapy in non-small cell lung cancer: a meta-analysis using updated data on individual patients from 52 randomised clinical trials. Non-small Cell Lung Cancer Collaborative Group. *BMJ*. 1995;311(7010):899–909.
- Division of Cancer Treatment and Diagnosis, National Cancer Institute, National Institutes of Health and Department of Health and Human Services. Cancer Therapy Evaluation Program, Common Terminology Criteria for Adverse Events, version 3.0. 2006.
- Morris JF, Koski A, Johnson LC. Spirometric standards for healthy nonsmoking adults. *Am Rev Respir Dis*. 1971;103(1):57–67.
- Kiri VA, Soriano J, Visick G, Fabbri L. Recent trends in lung cancer and its association with COPD: an analysis using the UK GP Research Database. *Prim Care Respir J*. 2010;19(1):57–61.
- Iachina M, Jakobsen E, Moller H, et al. The effect of different comorbidities on survival of non-small cells lung cancer patients. *Lung*. 2015;193(2):291–297.
- Sekine Y, Suzuki H, Yamada Y, Koh E, Yoshino I. Severity of chronic obstructive pulmonary disease and its relationship to lung cancer prognosis after surgical resection. *Thorac Cardiovasc Surg*. 2013;61(2):124–130.
- Kuo CH, Wu CY, Lee KY, et al. Chronic obstructive pulmonary disease in stage I non-small cell lung cancer that underwent anatomic resection: the role of a recurrence promoter. *COPD*. 2014;11(4):407–413.
- Lim JU, Yeo CD, Rhee CK, et al. Chronic obstructive pulmonary disease-related non-small-cell lung cancer exhibits a low prevalence of EGFR and ALK driver mutations. *PLoS One*. 2015;10(11):e0142306.
- Forey BA, Thornton AJ, Lee PN. Systematic review with meta-analysis of the epidemiological evidence relating smoking to COPD, chronic bronchitis and emphysema. *BMC Pulm Med*. 2011;11:36.
- Lange P, Colak Y, Ingebrigtsen TS, Vestbo J, Marott JL. Long-term prognosis of asthma, chronic obstructive pulmonary disease, and asthma-chronic obstructive pulmonary disease overlap in the Copenhagen City Heart study: a prospective population-based analysis. *Lancet Respir Med*. 2016;4(6):454–462.

31. Ramirez-Venegas A, Sansores RH, Quintana-Carrillo RH, et al. FEV1 decline in patients with chronic obstructive pulmonary disease associated with biomass exposure. *Am J Respir Crit Care Med.* 2014;190(9):996–1002.
32. Omori H, Nonami Y, Morimoto Y. Effect of smoking on FEV decline in a cross-sectional and longitudinal study of a large cohort of Japanese males. *Respirology.* 2005;10(4):464–469.
33. Donaldson GC, Seemungal TA, Bhowmik A, Wedzicha JA. Relationship between exacerbation frequency and lung function decline in chronic obstructive pulmonary disease. *Thorax.* 2002;57(10):847–852.
34. Paris C, Benichou J, Saunier F, et al. Smoking status, occupational asbestos exposure and bronchial location of lung cancer. *Lung Cancer.* 2003;40(1):17–24.
35. Byun MK, Cho EN, Chang J, Ahn CM, Kim HJ. Sarcopenia correlates with systemic inflammation in COPD. *Int J Chron Obstruct Pulmon Dis.* 2017;12:669–675.
36. Sekine Y, Hata A, Koh E, Hiroshima K. Lung carcinogenesis from chronic obstructive pulmonary disease: characteristics of lung cancer from COPD and contribution of signal transducers and lung stem cells in the inflammatory microenvironment. *Gen Thorac Cardiovasc Surg.* 2014;62(7):415–421.
37. Turner MC, Chen Y, Krewski D, Calle EE, Thun MJ. Chronic obstructive pulmonary disease is associated with lung cancer mortality in a prospective study of never smokers. *Am J Respir Crit Care Med.* 2007;176(3):285–290.
38. Caramori G, Adcock IM, Casolari P, et al. Unbalanced oxidant-induced DNA damage and repair in COPD: a link towards lung cancer. *Thorax.* 2011;66(6):521–527.
39. Sohal SS, Reid D, Soltani A, et al. Evaluation of epithelial mesenchymal transition in patients with chronic obstructive pulmonary disease. *Respir Res.* 2011;12:130.
40. Feary JR, Rodrigues LC, Smith CJ, Hubbard RB, Gibson JE. Prevalence of major comorbidities in subjects with COPD and incidence of myocardial infarction and stroke: a comprehensive analysis using data from primary care. *Thorax.* 2010;65(11):956–962.
41. Tamiya A, Naito T, Miura S, et al. Interstitial lung disease associated with docetaxel in patients with advanced non-small cell lung cancer. *Anticancer Res.* 2012;32(3):1103–1106.
42. Hashimoto N, Matsuzaki A, Okada Y, et al. Clinical impact of prevalence and severity of COPD on the decision-making process for therapeutic management of lung cancer patients. *BMC Pulm Med.* 2014;14:14.
43. Colak Y, Afzal S, Nordestgaard BG, Vestbo J, Lange P. Young and middle-aged adults with airflow limitation according to lower limit of normal but not fixed ratio have high morbidity and poor survival: a population-based prospective cohort study. *Eur Respir J.* 2018;51(3):1702681.

International Journal of COPD

Publish your work in this journal

The International Journal of COPD is an international, peer-reviewed journal of therapeutics and pharmacology focusing on concise rapid reporting of clinical studies and reviews in COPD. Special focus is given to the pathophysiological processes underlying the disease, intervention programs, patient focused education, and self management protocols.

Submit your manuscript here: <http://www.dovepress.com/international-journal-of-chronic-obstructive-pulmonary-disease-journal>

Dovepress

This journal is indexed on PubMed Central, MedLine and CAS. The manuscript management system is completely online and includes a very quick and fair peer-review system, which is all easy to use. Visit <http://www.dovepress.com/testimonials.php> to read real quotes from published authors.