

Macular morphology and response to ranibizumab treatment in patients with wet age-related macular degeneration [Corrigendum]

Dervenis N, Younis S. *Clin Ophthalmol*. 2016;10:1117–1122.

On page 1119, Figure 2 was incorrectly presented. This should have read:

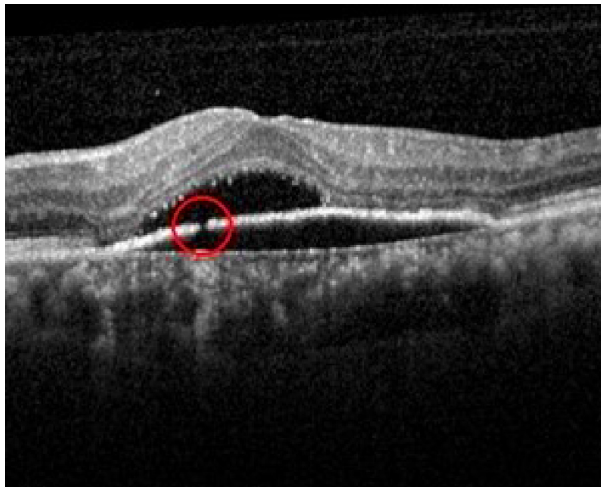


Figure 2 RPE discontinuity and subretinal fluid.

Notes: Area of discontinuity shown in the red circle. This image was originally published in the Retina Image Bank. Avris Romario Diparaja Siahaan. Discontinuity RPE. Retina Image Bank. 2014; Image Number 20572. © the American Society of Retina Specialists.¹⁵

Abbreviation: RPE, retinal pigment epithelium.

On page 1122, References section, reference 15 should have been included along with the copyright information with Figure 2.

- Retina Image Bank. Discontinuity RPE. Available from: <http://imagebank.asrs.org/file/20572/discontinuity-rpe>. Accessed December 1, 2016.

Clinical Ophthalmology is an international, peer-reviewed journal covering all subspecialties within ophthalmology. Key topics include: Optometry; Visual science; Pharmacology and drug therapy in eye diseases; Basic Sciences; Primary and Secondary eye care; Patient Safety and Quality of Care Improvements. This journal is indexed on

Submit your manuscript here: <http://www.dovepress.com/clinical-ophthalmology-journal>

PubMed Central and CAS, and is the official journal of The Society of Clinical Ophthalmology (SCO). The manuscript management system is completely online and includes a very quick and fair peer-review system, which is all easy to use. Visit <http://www.dovepress.com/testimonials.php> to read real quotes from published authors.