

Bioavailability of everolimus administered as a single 5 mg tablet versus five 1 mg tablets: a randomized, open-label, two-way crossover study of healthy volunteers

Karen Thudium¹
Jorge Gallo²
Emmanuel Bouillaud²
Carolin Sachs²
Simantini Eddy¹
Wing Cheung¹

¹Novartis Pharmaceuticals Corporation, East Hanover, NJ, USA; ²Novartis Pharma AG, Basel, Switzerland

Background: The mammalian target of rapamycin (mTOR) inhibitor everolimus has a well-established pharmacokinetics profile. We conducted a randomized, single-center, open-label, two-sequence, two-period crossover study of healthy volunteers to assess the relative bioavailability of everolimus administered as one 5 mg tablet or five 1 mg tablets.

Methods: Subjects were randomized 1:1 to receive everolimus dosed as one 5 mg tablet or as five 1 mg tablets on day 1, followed by a washout period on days 8–14 and then the opposite formulation on day 15. Blood sampling for pharmacokinetic evaluation was performed at prespecified time points, with 17 samples taken for each treatment period. Primary variables for evaluation of relative bioavailability were area under the concentration–time curve from time zero to infinity (AUC_{inf}) and maximum blood concentration (C_{max}). Safety was assessed by reporting the incidence of adverse events (AEs).

Results: Twenty-two participants received everolimus as one 5 mg tablet followed by five 1 mg tablets (n=11) or the opposite sequence (n=11). The C_{max} of five 1 mg tablets was 48% higher than that of one 5 mg tablet (geometric mean ratio, 1.48; 90% confidence interval [CI], 1.35–1.62). AUC_{inf} was similar (geometric mean ratio, 1.08; 90% CI, 1.02–1.16), as were the extent of absorption and the distribution and elimination kinetics. AEs, all grade 1 or 2, were observed in 54.5% of subjects.

Conclusion: Although the extent of absorption was similar, the C_{max} of five 1 mg tablets was higher than that of one 5 mg tablet, suggesting these formulations lead to different peak blood concentrations and are not interchangeable at the dose tested.

Keywords: absorption kinetics, healthy volunteers

Introduction

The mammalian target of rapamycin (mTOR) signaling pathway is important in the regulation of cell growth, proliferation, metabolism, survival, and angiogenesis.^{1,2} Because activation of mTOR is commonly associated with the pathogenesis of multiple tumor types, inhibition of the pathway provided the rationale for the development of anticancer therapies targeting mTOR.² Everolimus, an oral mTOR inhibitor, has been studied extensively in patients with multiple tumor types and tuberous sclerosis complex (TSC).³ In addition to its clinical profile, the pharmacokinetics (PK) and pharmacodynamics profiles of everolimus have been well characterized in patients with advanced solid tumors and TSC.^{4–7} Results of a Phase I study conducted in patients with advanced solid tumors demonstrated sustained activity over 7 days at oral everolimus

Correspondence: Wing Cheung
Novartis Pharmaceuticals Corporation, 1 Health Plaza,
East Hanover, NJ 07936, USA
Tel +1 862 778 3444
Fax +1 973 781 5511
Email wing.cheung@novartis.com

doses ≥ 20 mg once weekly.⁵ Area under the concentration–time curve (AUC) was dose-proportional, but maximum blood concentration (C_{max}) increased less than proportionally at doses ≥ 20 mg once weekly. Everolimus ≥ 20 mg once weekly or ≥ 5 mg once daily was recommended as the optimal effective dose. Results of another Phase I study of oral everolimus demonstrated more profound and sustained mTOR pathway-inhibition with everolimus 10 mg once daily than with 50 mg once weekly.⁴

Everolimus (Afinitor®; Novartis Pharmaceuticals Corp, East Hanover, NJ, USA) is approved in various countries for the treatment of patients with advanced hormone receptor-positive, HER2-negative breast cancer, in combination with exemestane after failure of letrozole or anastrozole; progressive, advanced pancreatic neuroendocrine tumors; renal cell carcinoma after failure of prior sunitinib or sorafenib; renal angiomyolipoma associated with TSC not requiring immediate surgery; and subependymal giant cell astrocytoma associated with TSC not amenable to curative resection.⁸ As Afinitor, everolimus is available as 2.5 mg, 5 mg, 7.5 mg, and 10 mg tablets, and as 2 mg, 3 mg, and 5 mg dispersible tablets for oral suspension (Afinitor Disperz; Novartis Pharmaceuticals Corp).⁸ Under the trade names Certican® (Novartis Pharma AG, Basel, Switzerland) and Zortress® (Novartis Pharmaceuticals Corp), everolimus has been approved for the prophylaxis of organ rejection in adult patients who received a renal, hepatic, or cardiac transplant and is available in formulations of 0.25 mg, 0.5 mg, 0.75 mg, and 1 mg tablets, and 0.1 mg and 0.25 mg dispersible tablets.⁹ Everolimus 1 mg tablets have not been studied in the oncology setting. Although 1 mg and 5 mg everolimus tablets have the same active ingredient and excipients, the proportional composition of the components differs between formulations. It is also not known whether several 1 mg tablets deliver the same peak concentration and bioavailability as a single higher dose tablet.

The purpose of this study was to determine the relative bioavailability of a single 5 mg oral dose of everolimus administered as one 5 mg tablet (reference) or as five 1 mg tablets (test). The secondary objective was to evaluate the safety and tolerability of both formulations.

Subjects and methods

Subjects

Male or female volunteers between 18 and 65 years of age who were in good health, as determined by medical history, current medical condition, physical examination, vital signs, electrocardiogram (ECG), and laboratory tests, were eligible for inclusion in the study. Pregnant or lactating

mothers and women of childbearing age and sexually active men (unless they were using contraception during and 8 weeks after dosing) were ineligible. Other exclusion criteria included tobacco or nicotine use within 3 months before screening; use of any prescription drugs within 30 days before dosing or over-the-counter medication or herbal supplement within 14 days of baseline assessments; participation in any clinical investigation within 4 weeks of dosing; known hypersensitivity to rapamycin and its derivatives; and a positive test for HIV antibody, hepatitis B surface antigen, or hepatitis C antibody. Use of CYP3A4 and/or P-glycoprotein inhibitors, inducers, or substrates was prohibited in the 30 days before the first everolimus dose until the end of the study. Consumption of grapefruit (and juice), star fruit (and juice), and cruciferous vegetables within 7 days of baseline assessments and of caffeine within 12 hours of baseline assessments was also prohibited.

The study protocol was approved by Ethics Committee of the Land Berlin, State Office of Health and Social Affairs Berlin, Berlin, Germany. The study was conducted in accordance with the ICH Harmonized Tripartite Guidelines for Good Clinical Practice with applicable local regulations, and with the ethical principles laid down in the Declaration of Helsinki. All participants provided written informed consent before screening.

Study design

This Phase I randomized, single-center, open-label, two-sequence, two-period crossover study was conducted in healthy volunteers (Figure 1). After a 14-day screening period, participants were randomly assigned 1:1 to receive a single 5 mg everolimus tablet on day 1, followed by a washout period on days 8–14 and then five 1 mg everolimus tablets on day 15, or the opposite sequence. All everolimus doses were administered with 240 mL of water under the supervision of study personnel, under fasting conditions. Participants received a standardized, light, low-fat dinner at least 10 hours before study drug administration; after this, no food was allowed until at least 4 hours postdose, when a standard meal was served. Meals were controlled for up to 72 hours postdose. Aside from water for dosing, one fluid was permitted within 1 hour before and after dosing. Water was allowed ad libitum at all other times. End-of-study evaluation was conducted 14 (± 2) days after everolimus administration in the second treatment period. Subjects were discontinued from the study in the event of grade 3 or 4 adverse events (AEs), abnormal laboratory values or test procedures, or protocol deviation. Subjects could voluntarily withdraw from the study at any time.

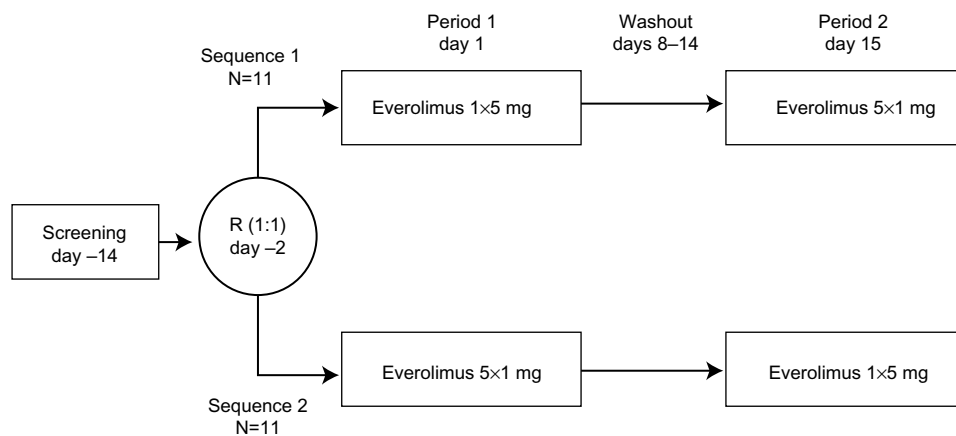


Figure 1 Study design.

Notes: End of pharmacokinetic sampling occurred at days 7 and 21. End of study evaluation was performed 14 (± 2) days after everolimus administration in the second time period.

Abbreviation: R, randomization.

Pharmacokinetic assessments

Blood sampling for PK evaluations was performed at pre-specified time points, with 17 samples collected during each treatment period: one predose sample collected up to 24 hours before everolimus administration and 16 postdose samples collected 0.5, 1, 1.5, 2, 2.5, 3, 4, 6, 8, 10, 24, 48, 72, 96, 120, and 144 hours after everolimus administration. At each time point, 2 mL venous blood was collected into a tube containing dipotassium ethylenediaminetetraacetic acid (K_2EDTA) anticoagulant and stored at $-20^\circ C$ or below within 60 minutes of the draw time. Everolimus concentration in whole blood was determined at a central laboratory (WuXi AppTec, Shanghai, China) by a validated method of liquid chromatography mass spectrometry (LC-MS/MS) with solid-phase extraction (lower limit of quantification [LLOQ], 0.300 ng/mL).

Primary variables for evaluation of relative bioavailability were AUC from time zero to infinity (AUC_{inf}) and C_{max} . Secondary variables were AUC from time zero to the last observation time point, regardless of whether that concentration is quantifiable (AUC_{all}), AUC from time zero to the 144-hour concentration sampling time (AUC_{0-144h}), time to reach C_{max} (T_{max}), terminal slope of elimination phase, apparent volume of distribution (V_d/F), total body apparent clearance of drug from the blood (CL/F), elimination half-life ($T_{1/2}$), and mean resident time (MRT). All PK parameters were analyzed using Phoenix[®] WinNonlin 6.3 (Pharsight, Mountain View, CA, USA) and noncompartmental methods.

Safety assessments

Safety was assessed throughout the study period and for up to 30 (± 2) days following the last everolimus dose by reporting the incidence of AEs and serious AEs (SAEs) and

their severity and relationship to study drug. Assessments of hematology and blood chemistry and urinalysis were performed at screening, at each of the two baseline visits, and at the end of study treatment. Vital signs, physical condition, ECG, and body weight were regularly assessed. AEs were graded according to the Common Terminology Criteria for Adverse Events (CTCAE), version 4.03.

Statistical analysis

Because the primary statistical analysis did not include hypothesis testing, no power or power-based sample size calculations were performed. The number of subjects enrolled was driven by the targeted precision of 20% of the two-sided 90% confidence interval (CI) for the ratio of geometric means.

The full analysis set population included all randomly assigned participants. The safety population included all participants who received at least one dose of everolimus. The PK analysis set population included all participants who completed at least one treatment period and had evaluable PK data. Evaluable PK data for any treatment period fulfilled the following criteria: no vomiting within 4 hours of dosing, sufficient sample available for analysis, and no use of CYP3A4 inhibitors, inducers, or substrates for 30 days before the first dose until the end of the study.

Data were analyzed for PK and safety using SAS[®] version 9.1.3 (SAS Institute, Inc., Cary, NC, USA). Descriptive statistics were used to summarize PK parameters, including geometric and arithmetic means, standard deviation (SD), mean and geometric mean coefficient of variation (CV%), median, minimum, and maximum; only median, minimum, and maximum were used for T_{max} .

Table 1 Baseline characteristics

	Everolimus 1×5 mg → 5×1 mg n=11	Everolimus 5×1 mg → 1×5 mg n=11	All participants N=22
Age, years*	50.0 (25–63)	40.0 (27–65)	47.5 (25–65)
Sex, n (%)			
Women	9 (82)	7 (64)	16 (73)
Men	2 (18)	4 (36)	6 (27)
Race, n (%)			
Caucasian	11 (100)	11 (100)	22 (100)
BMI, kg/m ² *	23.8 (20.5–28.4)	25.7 (22.3–29.7)	24.5 (20.5–29.7)

Notes: BMI was calculated using baseline values for weight and height. *Values are expressed as median (range).

Abbreviation: BMI, body mass index.

Pre-dose concentrations below the LLOQ were treated as zero, and post-dose concentrations below the LLOQ were excluded from summary statistics and from calculation of PK parameters. The primary PK parameters (AUC_{inf} and C_{max}) were analyzed separately using a linear mixed model with the log-transformed PK variable as the dependent variable; fitting sequence, period, and treatment as fixed effects; and subject nested within-sequence as a random effect. From the fitted model, the difference in treatment estimates on the log scale and the 90% CI was calculated and back-transformed to provide geometric mean ratios and their two-sided 90% CIs. Missing values were not imputed. Aside from T_{max}, similar model-based analyses were conducted for the secondary PK parameters. T_{max} was analyzed with point estimate (median difference) and associated ranges provided for comparison.

Results

Subjects

Twenty-two participants were randomly assigned to receive everolimus administered as one 5 mg tablet on day 1 followed by five 1 mg tablets on day 15 (n=11) or as five 1 mg tablets on day 1 followed by one 5 mg tablet on day 15 (n=11). All participants were included in the full analysis set, safety, and PK analysis set populations.

Baseline characteristics were comparable between the sequences (Table 1). In the overall population, median age was 47.5 (range, 25 to 65) years, and most participants (73%) were women.

Pharmacokinetics

The C_{max} of five 1 mg tablets was 48% higher than the C_{max} of one 5 mg tablet (geometric mean ratio, 1.48; 90% CI, 1.35–1.62) (Table 2 and Figure 2). Because the 90% CI was not within the boundaries of 0.8–1.25, the everolimus formulations of five 1 mg tablets and one 5 mg tablet did not meet bioequivalence criteria in terms of C_{max}. The two formulations had similar AUC_{inf} (geometric mean ratio, 1.08; 90% CI, 1.02–1.16) (Table 2).

Everolimus administered as five 1 mg tablets had a faster absorption rate as demonstrated by a shorter median T_{max} than was observed with one 5 mg tablet (0.5 vs 1.0 hour) (Table 3). As assessed by both AUC_{0–144h} and AUC_{all}, total overall exposure was similar for one 5 mg tablet and five 1 mg tablets (Table 3). No differences in T_{1/2} and MRT were apparent, suggesting similar distribution and elimination kinetics (Table 3). Mean V_d/F of one 5 mg tablet was higher than that of five 1 mg tablets (Table 3), but the geometric mean ratio and 90% CI suggested no statistically significant difference (ratio, 0.92; 90% CI, 0.85–0.99). Everolimus concentration–time profiles at time points beyond 24 hours post-dose were comparable between the two treatment formulations (Figure 3). Similar pre-dose trough concentrations (C_{min}) are expected after daily administration of the two formulations.

Safety

Overall, 12 (54.5%) participants experienced at least one AE during the study (Table 4). The most frequently reported AEs were headache (27.3%) and nasopharyngitis, nausea, dry skin, and myalgia (9.1% each). Seven (31.8%) participants experienced AEs determined to be related to everolimus, with headache (18.2%) being the most common.

Table 2 Relative bioavailability of everolimus one 5 mg tablet versus five 1 mg tablets (PK population, N=22)

PK parameter	Everolimus dose	Adjusted geometric mean	Treatment comparison ^a	
			Geometric mean ratio	90% CI
AUC _{inf} (ng·h/mL)	1×5 mg	243	1.08	1.02–1.16
	5×1 mg	264		
C _{max} (ng/mL)	1×5 mg	28.7	1.48	1.35–1.62
	5×1 mg	42.3		

Note: ^aComparison of everolimus five 1 mg tablets (test) with one 5 mg tablet (reference).

Abbreviations: AUC, area under the concentration–time curve; AUC_{inf}, AUC from time zero to infinity; C_{max}, maximum blood concentration; CI, confidence interval; PK, pharmacokinetics.

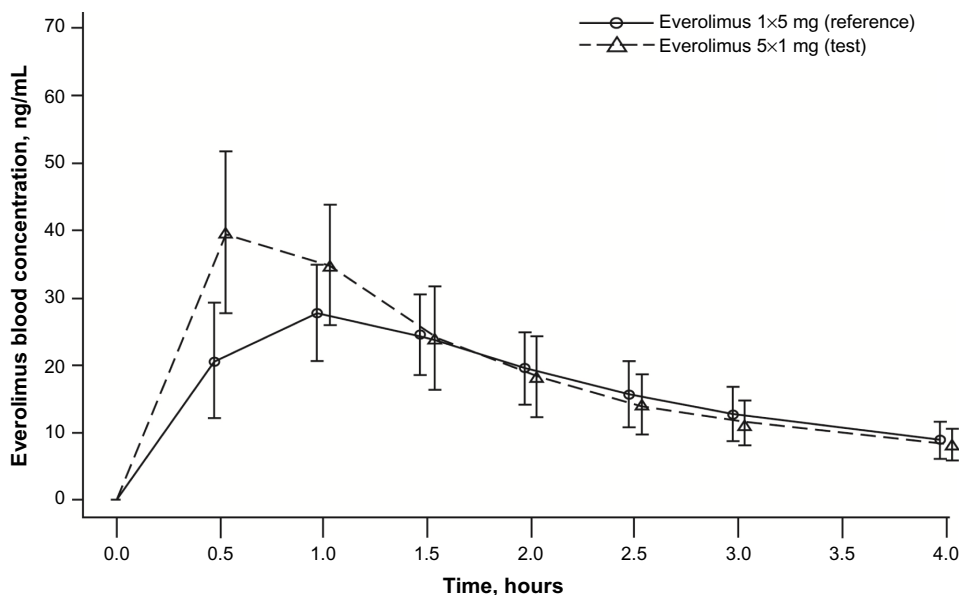


Figure 2 Arithmetic mean (SD) blood concentration–time profiles from 0 to 4 hours for everolimus administered as five 1 mg tablets and as one 5 mg tablet (PK population, N=22).

Abbreviations: PK, pharmacokinetics; SD, standard deviation.

Other AEs suspected to be related to everolimus were nausea, diarrhea, vomiting, oral herpes, myalgia, dizziness, and dry skin. All AEs were grade 1 or 2, and no AE led to study discontinuation. No clinically significant changes in laboratory parameters, vital signs, or ECG intervals were observed during the study.

Discussion

Everolimus efficacy and safety in the oncology setting are well established, and everolimus is currently approved in multiple countries for treatment of patients with various

types of cancer.⁸ The relationship between dose and the pharmacodynamic response of everolimus in patients with cancer has been established.^{4,5} Following oral administration, everolimus is rapidly absorbed, with a T_{max} of 1–2 hours.⁵ Steady state is reached by week 2 after daily administration.⁵ The steady state AUC is dose-proportional for dosages of 5 mg to 70 mg weekly and 5 mg to 10 mg daily.⁵ In addition, C_{min} was highly predictive of AUC, with a coefficient of determination of 0.96.⁵ A meta-analysis of everolimus in clinical oncology trials demonstrated that a twofold increase in C_{min} increased the likelihood of tumor size reduction

Table 3 Summary of secondary PK parameters of everolimus by treatment (PK population, N=22)

Everolimus treatment	Statistics	AUC _{all} (ng·h/mL)	AUC _{0–144h} (ng·h/mL)	T _{max} (h)	Lambda _z (1/h)	CL/F (L/h)	T _{1/2} (h)
1×5 mg	Mean (SD)	238 (60.7)	238 (60.5)	N/A	0.0227 (0.00366)	21.2 (5.19)	31.2 (4.79)
	CV% mean	25.5	25.5	N/A	16.1	24.5	15.4
	Geometric mean	231	230	N/A	0.0225	20.6	30.9
	CV% geometric mean	25.5	25.4	N/A	15.7	25.0	15.7
	Median	219	218	1.01	0.0224	21.7	31.0
	Min, max	142, 375	142, 373	0.500, 2.48	0.0163, 0.0331	12.9, 33.7	21.0, 42.6
5×1 mg	Mean (SD)	260 (75.5)	260 (75.3)	N/A	0.0228 (0.00351)	19.7 (5.79)	31.1 (4.84)
	CV% mean	29.0	29.0	N/A	15.4	29.4	15.6
	Geometric mean	250	250	N/A	0.0225	19.0	30.7
	CV% geometric mean	30.2	30.1	N/A	15.6	29.0	15.6
	Median	263	263	0.500	0.0226	18.3	30.7
	Min, max	135, 450	135, 449	0.500, 1.02	0.0173, 0.0289	10.7, 34.7	24.0, 40.0

Notes: For T_{max} , only median and range are presented. $CV\% = SD/mean \times 100$. $CV\%$ geometric mean = $\sqrt{\exp[\text{variance for log-transformed data}] - 1} \times 100$.

Abbreviations: AUC_{0–144h}, area under the concentration–time curve from time zero to the 144-hour concentration sampling time; AUC_{all}, area under the concentration–time curve from time zero to time of last observation time point, regardless of whether the last concentration is quantifiable; CL/F, systemic clearance; CV%, coefficient of variation (%); Lambda_z, terminal slope of elimination phase; N/A, not applicable; PK, pharmacokinetics; SD, standard deviation; sqrt, square root; T_{1/2}, terminal half-life; T_{max}, time taken to reach maximum blood concentration; min, minimum; max, maximum.

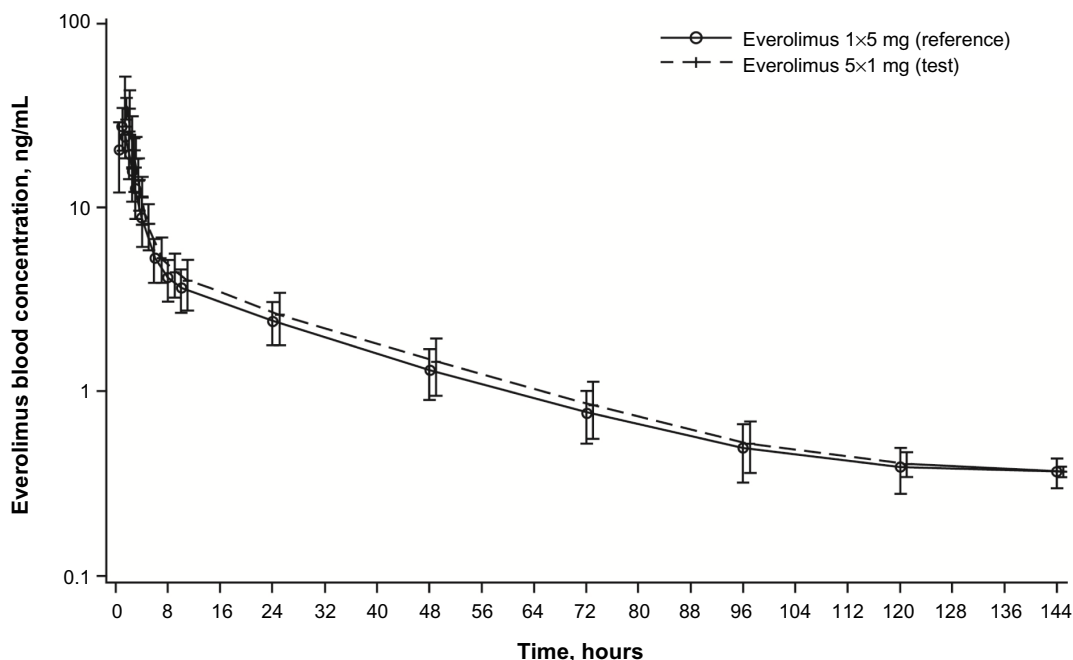


Figure 3 Arithmetic mean (SD) blood concentration–time profiles for everolimus administered as five 1 mg tablets and as one 5 mg tablet (PK population, N=22). **Abbreviations:** PK, pharmacokinetics; SD, standard deviation.

(odds ratio, 1.40; 95% CI, 1.23–1.60), was associated with a trend toward reduced risk of progression-free survival events (risk ratio [RR], 0.90; 95% CI, 0.69–1.18), and increased the risk of grade ≥ 3 stomatitis (RR, 1.49; 95% CI, 1.05–2.10) and pulmonary (RR, 1.93; 95% CI, 1.12–3.34) and metabolic (RR, 1.30; 95% CI, 1.02–1.65) events.¹⁰

Although everolimus is available as a 1 mg tablet, this formulation has not been evaluated in the oncology setting, and it is not known whether several 1 mg tablets deliver the same C_{max} and bioavailability as a single tablet of a higher dose. Results of this healthy volunteer study, which used

a well-established, standard crossover design, suggest that everolimus dosed as five 1 mg tablets does not have the same bioavailability as one 5 mg tablet. As assessed by C_{max} , the bioequivalence criteria were not met, despite similar AUC_{inf} . The C_{max} was 48% higher with five 1 mg tablets than with one 5 mg tablet. In addition, T_{max} was 0.5 hour with five 1 mg tablets and 1.01 hours with one 5 mg tablet. The distribution and elimination kinetics (CL/F , $T_{1/2}$, and terminal slope of elimination phase parameters) were similar with both everolimus formulations.

The safety profile of everolimus administered as 5 mg tablets to patients with advanced solid tumors has been well established. Common class effect AEs include mucositis, stomatitis, skin toxicities, pulmonary toxicities, hyperlipidemia, and hyperglycemia.¹¹ Results of a Phase I dose-escalation study of oral everolimus conducted in patients with advanced solid tumors found dose-limiting toxicities to be stomatitis and fatigue at the 50 mg once-weekly dosage and hyperglycemia at the 10 mg daily dosage.⁵ Conversely, the safety profile of everolimus administered as several 1 mg tablets in patients with cancer has not been evaluated. In this single-dose study of healthy volunteers, both formulations were well tolerated, with 12.5% of subjects experiencing at least one AE during the study period, all of which were grade 1 or 2. The most common AE was headache. No serious AEs were reported, no AE led to treatment discontinuation, and no new safety concerns were identified.

Table 4 Number of subjects who experienced adverse events, regardless of study drug relationship (safety population, N=22)

Adverse event, n (%)	All subjects (N=22)
Total	12 (54.5)
Headache	6 (27.3)
Dry skin	2 (9.1)
Myalgia	2 (9.1)
Nasopharyngitis	2 (9.1)
Nausea	2 (9.1)
Diarrhea	1 (4.5)
Dizziness	1 (4.5)
Erythema	1 (4.5)
Oral herpes	1 (4.5)
Phlebitis	1 (4.5)
Rhinitis	1 (4.5)
Vaginal hemorrhage	1 (4.5)
Vomiting	1 (4.5)

Note: All adverse events were grade 1 or 2.

In conclusion, everolimus formulations of one 5 mg tablet and five 1 mg tablets did not meet bioequivalence criteria in terms of C_{max} despite similar AUC_{inf} in this Phase I study of healthy volunteers. In addition to the consideration that the safety profile of several 1 mg tablets in patients with advanced solid tumors is unknown, this finding suggests that these formulations are not interchangeable.

Acknowledgments

This study was funded by Novartis Pharmaceuticals Corporation, Inc. (East Hanover, NJ, USA). Editorial assistance was provided by Cathy Winter, PhD, and Melanie Leiby, PhD (both from ApotheCom, Yardley, PA, USA) and funded by Novartis Pharmaceuticals Corporation.

Disclosure

Drs Thudium, Eddy, and Cheung are employees of Novartis Pharmaceuticals Corporation. Drs Gallo, Bouillaud, and Sachs are employees of Novartis Pharma AG.

References

- Dancey J. mTOR signaling and drug development in cancer. *Nat Rev Clin Oncol*. 2010;7(4):209–219.
- Meric-Bernstam F, Gonzalez-Angulo AM. Targeting the mTOR signaling network for cancer therapy. *J Clin Oncol*. 2009;27(13):2278–2287.
- Lebwohl D, Anak O, Sahmoud T, et al. Development of everolimus, a novel oral mTOR inhibitor, across a spectrum of diseases. *Ann NY Acad Sci*. 2013;1291:14–32.
- Tabernero J, Rojo F, Calvo E, et al. Dose- and schedule-dependent inhibition of the mammalian target of rapamycin pathway with everolimus: a phase I tumor pharmacodynamic study in patients with advanced solid tumors. *J Clin Oncol*. 2008;26(10):1603–1610.
- O'Donnell A, Faivre S, Burris HA, et al. Phase I pharmacokinetic and pharmacodynamic study of the oral mammalian target of rapamycin inhibitor everolimus in patients with advanced solid tumors. *J Clin Oncol*. 2008;26(10):1588–1595.
- Krueger DA, Care MM, Holland K, et al. Everolimus for subependymal giant-cell astrocytomas in tuberous sclerosis. *N Engl J Med*. 2010;363(19):1801–1811.
- Bissler JJ, Kingswood JC, Radzikowska E, et al. Everolimus for angioleiomyoma associated with tuberous sclerosis complex or sporadic lymphangiomyomatosis (EXIST-2): a multicentre, randomised, double-blind, placebo-controlled trial. *Lancet*. 2013;381(9869):817–824.
- AFINITOR® (everolimus) tablets for oral administration. AFINITOR DISPERZ (everolimus tablets for oral suspension) [prescribing information]. East Hanover, NJ: Novartis Pharmaceuticals Corporation; 2014.
- ZORTRESS® (everolimus) tablets for oral use [prescribing information]. East Hanover, NJ: Novartis Pharmaceuticals Corporation; 2013.
- Ravaud A, Urva SR, Grosch K, Cheung WK, Anak O, Sellami DB. Relationship between everolimus exposure and safety and efficacy: meta-analysis of clinical trials in oncology. *Eur J Cancer*. 2014;50(3):486–495.
- Sankhala K, Mita A, Kelly K, Mahalingam D, Giles F, Mita M. The emerging safety profile of mTOR inhibitors, a novel class of anticancer agents. *Target Oncol*. 2009;4(2):135–142.

Clinical Pharmacology: Advances and Applications

Publish your work in this journal

Clinical Pharmacology: Advances and Applications is an international, peer-reviewed, open access journal publishing original research, reports, reviews and commentaries on all areas of drug experience in humans. The manuscript management system is completely online and includes a very quick and fair peer-review system, which is all easy to use.

Submit your manuscript here: <http://www.dovepress.com/clinical-pharmacology-advances-and-applications-journal>

Dovepress

Visit <http://www.dovepress.com/testimonials.php> to read real quotes from published authors.