

# Histopathological examination of *Acanthamoeba* sclerokeratitis

Kumiko Kato<sup>1</sup>  
Koji Hirano<sup>2</sup>  
Tetsuro Nagasaka<sup>3</sup>  
Koichi Matsunaga<sup>1</sup>  
Yuko Takashima<sup>1</sup>  
Mineo Kondo<sup>1</sup>

<sup>1</sup>Department of Ophthalmology, Mie University School of Medicine, Tsu, Japan; <sup>2</sup>Department of Ophthalmology, Fujita Health University, Nagoya, Japan; <sup>3</sup>Department of Medical Laboratory Science, Nagoya University Graduate School of Medicine, Nagoya, Japan

**Purpose:** To report the histopathological findings in a case of severe *Acanthamoeba* sclerokeratitis (ASK).

**Patient and methods:** A 46-year-old patient was referred to the Department of Ophthalmology of Mie University Hospital because of a severe corneal ulcer of the right eye of 6 months' duration. Our initial examination showed a ring-shaped corneal opacity with extensive epithelial defects and nodular scleritis. Cysts of *Acanthamoeba* were identified in cultures from corneal scrapings, and he was diagnosed with ASK. He was started on antiamoebic treatment, including topical miconazole and chlorhexidine. The corneal ulcer was debrided several times. One month later, he developed necrotizing scleritis, and the cornea suddenly perforated. The eye was enucleated because of severe pain and prepared for histopathological examination.

**Results:** The histopathological examination showed an infiltration of polymorphonuclear leukocytes throughout the corneal stroma and also in the limbal area of the sclera, forming an abscess. Granulation tissue was observed in the anterior sclera close to the ciliary body, but the posterior regions of the eye were not affected by inflammation or tissue destruction. The cysts of *Acanthamoeba* were observed only in the cornea.

**Conclusion:** Histopathological examination of an eye with severe ASK showed that the inflammation and tissue granulation were present only in the anterior part of eye, and the posterior segment was not affected. Because the inflammation and tissue destruction were confined to the anterior segment, enucleation might not have been necessary if the severe pain was able to be controlled.

**Keywords:** *Acanthamoeba* sclerokeratitis, histopathology, acute and chronic inflammation, enucleation

## Introduction

*Acanthamoeba* sclerokeratitis (ASK) is a rare and severe complication of advanced *Acanthamoeba* keratitis (AK), and it has been estimated to occur in 14%–16% of AK cases.<sup>1,2</sup> Despite intensive antiamoebic therapy, the prognosis of ASK is poor, and it occasionally requires enucleation, mainly because of the intense pain in a blind eye.<sup>3,4</sup>

The pathogenesis of ASK is poorly understood. It is still not known whether this severe scleral inflammation is induced by an immune-mediated reaction secondary to AK or a direct invasion of *Acanthamoeba* into the sclera.

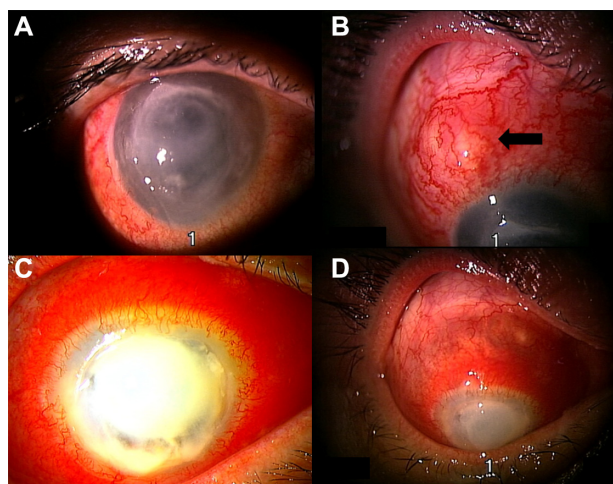
We examined a patient with ASK whose eye had to be enucleated because of corneal perforation and severe pain. Histopathological examinations of the enucleated eye showed that the pathological findings were confined to the anterior segment, and the posterior segment was completely normal.

Correspondence: Kumiko Kato  
Department of Ophthalmology,  
Mie University School of Medicine,  
2-174 Edobashi, Tsu, Mie 519-8507, Japan  
Tel +81 59 231 5027  
Fax +81 59 231 3036  
Email k-kato@clin.medic.mie-u.ac.jp

## Case report

A healthy 46-year-old man was referred to our hospital with severely reduced vision and severe pain to have his eye examined. He had been diagnosed with herpetic disciform keratitis at a local clinic 6 months earlier because of a ring infiltrate. Because of complications of iridocyclitis, he was treated with topical and systemic steroids along with acyclovir ointment. However, the symptoms and findings worsened, and he was referred to our hospital.

On his first visit, we learned that he had been wearing 1-day disposable soft contact lenses for several days. The visual acuity in his right eye was hand motion, and the cornea had a ring-shaped opacity with extensive epithelial defects (Figure 1A). A nodule was observed beneath the highly injected conjunctiva at the superior sclera close to the limbus (Figure 1B, arrow). Cysts of *Acanthamoeba* were identified in cultures of samples of the corneal abscess, and the patient was diagnosed with ASK. He was treated with oral itraconazole and topical micafungin and chlorhexidine (0.02%) hourly. The corneal region was debrided several times; however, the injection of the conjunctiva and sclera worsened, leading to necrotizing scleritis 1 month after the first examination (Figure 1C). An 8 mm-diameter ring-shaped abscess developed in the corneal lesion, and soon after that the cornea perforated (Figure 1D). Because he complained of severe pain and requested removal of the right eye, the eye was enucleated under general anesthesia.

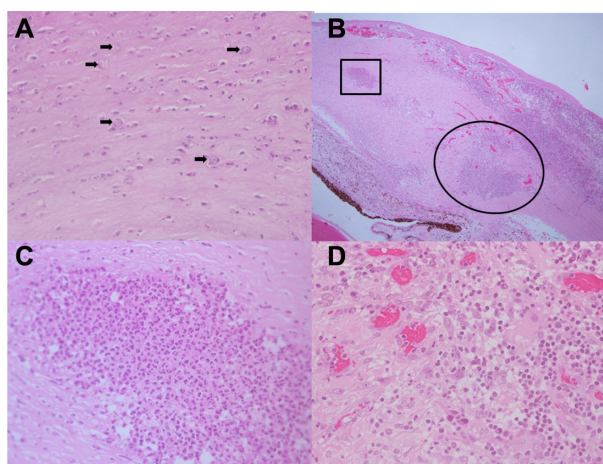


**Figure 1 (A–D)** Clinical findings of a patient with severely reduced vision and severe pain in his right eye. Findings at the initial visit (**A** and **B**) and 1 month later (**C** and **D**). (**A**) Corneal ring-shaped infiltration with epithelial defects can be seen 6 months after onset. (**B**) Scleral area is highly injected, and a nodule (arrow) can be seen beneath the conjunctiva. (**C**) Despite the antiamoebic therapy, a corneal perforation developed 1 month after the first examination. The cornea has an abscess. (**D**) Uveal tissue can be seen through the thin sclera.

Paraffin sections of the enucleated eye were examined histopathologically. Cysts of *Acanthamoeba* and polymorphonuclear leukocytes (PMNLs) were observed throughout the corneal stroma, indicating an active invasion of the protozoan (Figure 2B). The anterior sclera in the limbal area was acutely inflamed with an infiltration of PMNLs, and an abscess was observed at the limbus (Figure 2B and C). However, the sclera close to the ciliary body appeared different: granulation tissue consisting of congested blood vessels surrounded by macrophages and lymphocytes was observed in this area (Figure 2D). Interestingly, the signs of inflammation and granulation were not observed in the sclera posterior to the insertion of the rectus muscles or in the retina or choroid.

## Discussion

Several cases of ASK have been reported, and 5 out of the 11 cases, found the eyes were enucleated.<sup>1,3–8</sup> Histopathological evaluations of these eyes showed that cysts of *Acanthamoeba* were observed in the scleral region in only 2 eyes.<sup>3,5</sup> Dougherty et al<sup>3</sup> reported that the cysts were associated with inflammatory cells, eg, lymphocytes, plasma cells, and histiocytes, deep in the anterior sclera. These findings suggested that it may be difficult to treat ASK by topical antiamoebic drugs. Ebrahimi et al<sup>5</sup> also detected cysts in the limbal area, and suggested a direct invasion of *Acanthamoeba* from the cornea.



**Figure 2 (A–D)** Histological sections of the cornea, corneal limbus, and anterior sclera. (**A**) Histopathological section showing the corneal stroma. Cysts of *Acanthamoeba* (arrows) can be seen throughout the corneal stroma. Periodic acid–Schiff, 400 $\times$ . (**B**) An abscess is seen in the limbal area (square) and granulation tissue (oval circle) at the sclera close to the pars plicata of the ciliary body. (**C**) Polymorphonuclear leukocytes can be seen aggregated, indicating the possibility of active infection and acute inflammation (high magnification of square area in **B**). 400 $\times$ . (**D**) Accumulation of monocytes associated with congested blood vessels and fibrous tissue, indicating the phase of chronic inflammation and the repair reaction (high magnification of oval area in **B**). 400 $\times$ .

The eye from our case study had histopathological features of acute and chronic inflammation in the anterior segment. The cornea was infiltrated by PMNLs and cysts of *Acanthamoeba* over a large area, suggesting highly active AK even 6 months after the onset of AK and active treatment with anti-amoebic drugs. The abscess was present in the limbal area, and granulation tissue with diffuse invasion of monocytes was seen in the deep sclera close to the ciliary body. Despite these severe inflammatory findings in the anterior part of the eye, we could not find any evidence of inflammation or tissue destruction in the sclera posterior to the insertion of the rectus muscle or in the retina or choroid. We assumed that the absence of vessels in the cornea and the difference in the blood supply to the anterior and posterior parts of the sclera accounted for the histopathological differences. Although we could not find any cysts or trophozoites of *Acanthamoeba* in the scleral area, the abscess and the granulation tissue observed in the anterior sclera strongly indicated that there should be microorganisms and granulation tissue in the scleral regions.

Enucleation is occasionally performed because of suspected endophthalmitis in eyes with severe microbial keratitis.<sup>9</sup> However, as our case demonstrated, inflammation and tissue destruction might be confined to the anterior segment, and the posterior part of the eye can remain normal even in eyes with severe ASK. We suggest that enucleation or evisceration can be avoided in these ASK cases if the severe pain can be controlled. Systemic steroids or immunosuppressives are suggested to suppress inflammation and to relieve pain for ASK patients.<sup>4,6,8</sup> However, we have to be aware that cysts of *Acanthamoeba* are still in the corneal region, and both

topical and systemic anti-amoebic therapy should be continued together with systemic immunosuppressive therapy.

In our case, a delay in the diagnosis of AK and the application of topical steroids might have led to the ASK. Thus, we should be aware that AK can resemble herpetic keratitis,<sup>1,10</sup> and topical steroids should be used more discreetly for keratitis of unknown origin.

## Disclosure

The authors report no conflicts of interest in this work.

## References

1. Mannis MJ, Tamaru R, Roth AM, Burns M, Thirkill C. *Acanthamoeba* sclerokeratitis. Determining diagnostic criteria. *Arch Ophthalmol*. 1986;104(9):1313–1317.
2. Bacon AS, Frazer DG, Dart JK, Matheson M, Ficker LA, Wright P. A review of 72 consecutive cases of *Acanthamoeba* keratitis, 1984–1992. *Eye (Lond)*. 1993;7(Pt 6):719–725.
3. Dougherty PJ, Binder PS, Mondino BJ, Glasgow BJ. *Acanthamoeba* sclerokeratitis. *Am J Ophthalmol*. 1994;117(4):475–479.
4. Kuennen RA, Smith RH, Mauger TF, Craig E. Enucleation following treatment with intravenous pentamidine for *Acanthamoeba* sclerokeratitis. *Clin Ophthalmol*. 2010;4:1145–1149.
5. Ebrahimi KB, Green WR, Grebe R, Jun AS. *Acanthamoeba* sclerokeratitis. *Graefes Arch Clin Exp Ophthalmol*. 2009;247(2):283–286.
6. Lee GA, Gray TB, Dart JK, et al. *Acanthamoeba* sclerokeratitis: treatment with systemic immunosuppression. *Ophthalmology*. 2002;109(6):1178–1182.
7. Hirano K, Sai S. Severe *Acanthamoeba* sclerokeratitis in a non-contact lens wearer. *Acta Ophthalmol Scand*. 1999;77(3):347–348.
8. Pineda R 2nd, Kocatürk T, Bhui RD. Visual outcome and rehabilitation in a case of bilateral *Acanthamoeba* sclerokeratitis. *Cornea*. 2007;26(9):1150–1152.
9. Cruz CS, Cohen EJ, Rapuano CJ, Laibson PR. Microbial keratitis resulting in loss of the eye. *Ophthalmic Surg Lasers*. 1998;29(10):803–807.
10. Lindquist TD. Treatment of *Acanthamoeba* keratitis. *Cornea*. 1998;17(1):11–16.

### Clinical Ophthalmology

#### Publish your work in this journal

Clinical Ophthalmology is an international, peer-reviewed journal covering all subspecialties within ophthalmology. Key topics include: Optometry; Visual science; Pharmacology and drug therapy in eye diseases; Basic Sciences; Primary and Secondary eye care; Patient Safety and Quality of Care Improvements. This journal is indexed on

Submit your manuscript here: <http://www.dovepress.com/clinical-ophthalmology-journal>

Dovepress

PubMed Central and CAS, and is the official journal of The Society of Clinical Ophthalmology (SCO). The manuscript management system is completely online and includes a very quick and fair peer-review system, which is all easy to use. Visit <http://www.dovepress.com/testimonials.php> to read real quotes from published authors.